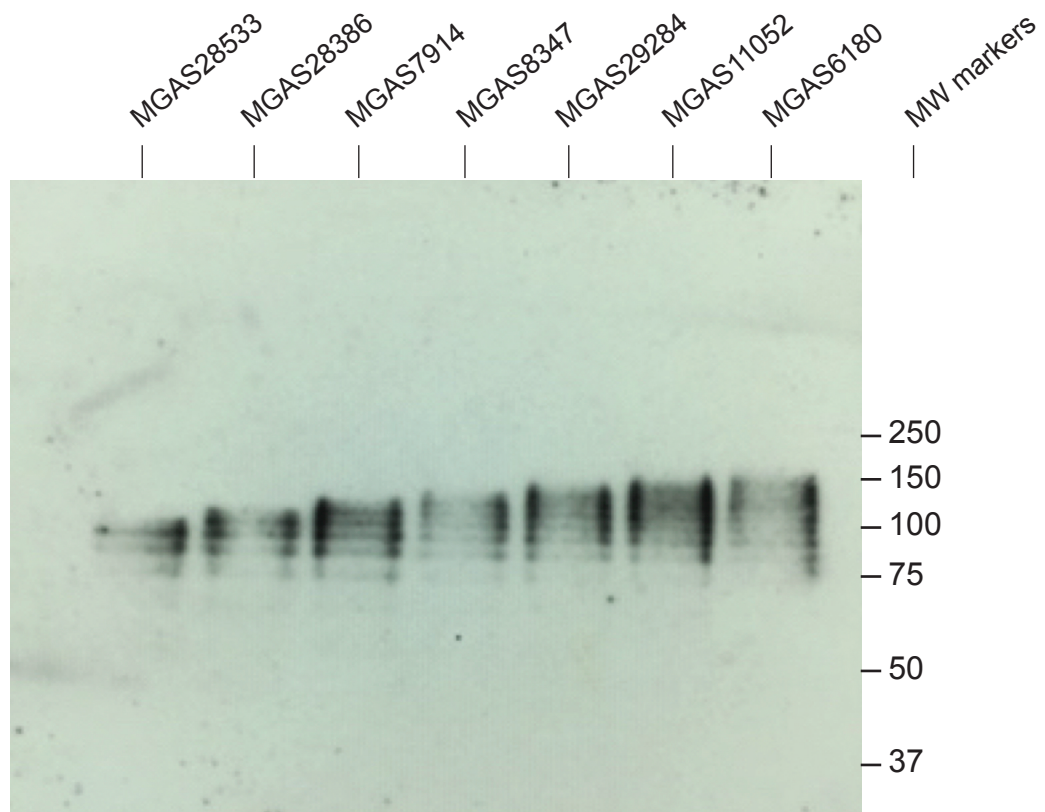


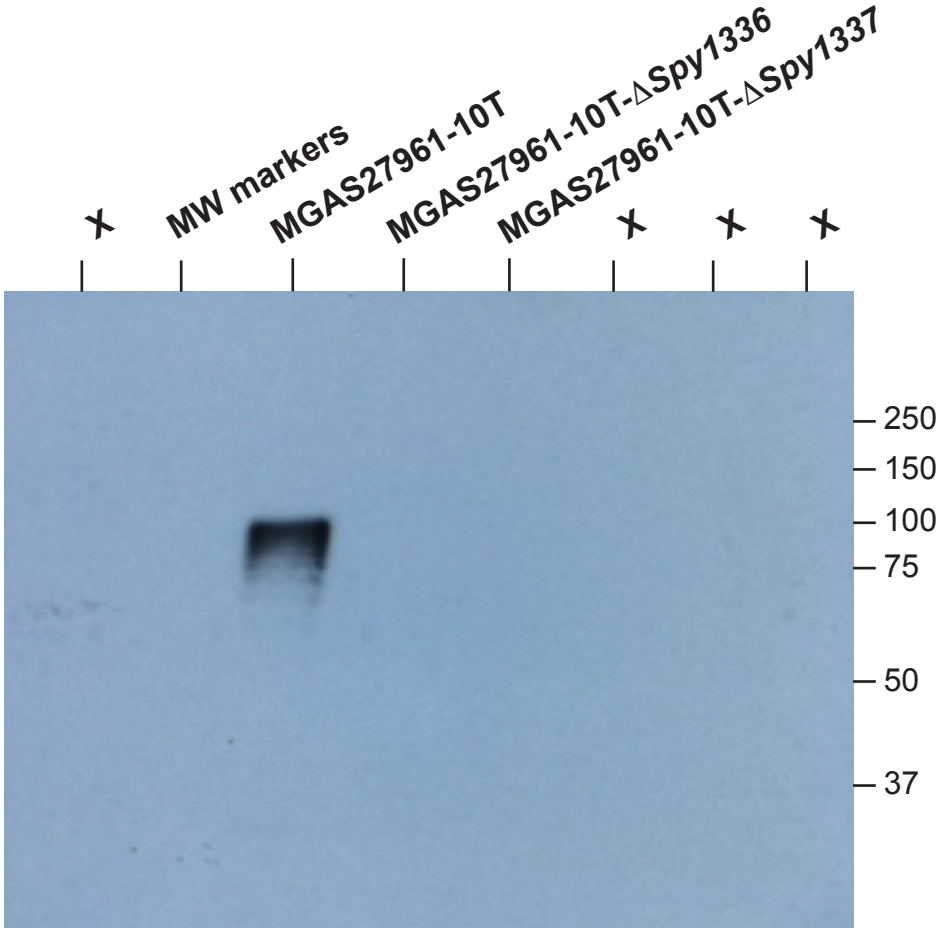
Figure 2C original image



MW: Molecular weight

Original picture of a Kodak film placed on a transilluminator was taken using an iphone

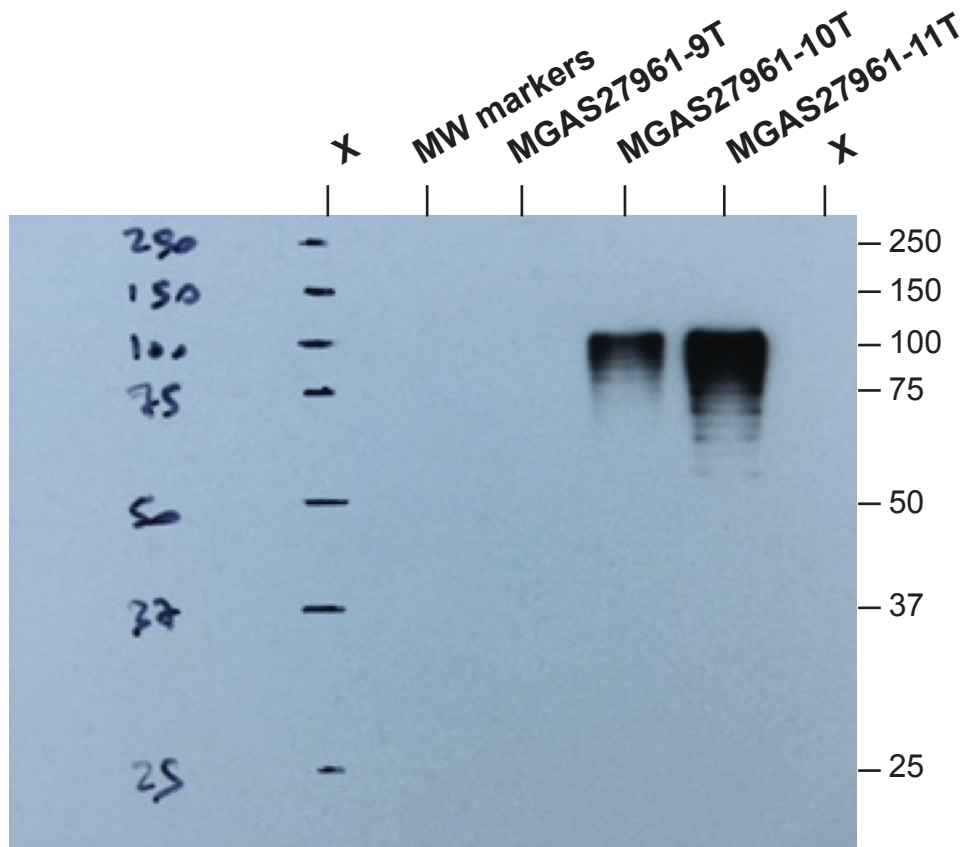
Figure 6A original image



MW: Molecular weight

Original picture of a Kodak film placed on a transilluminator was taken using an iphone

Figure 6B original image



MW: Molecular weight

Original picture of a Kodak film placed on a transilluminator was taken using an iphone