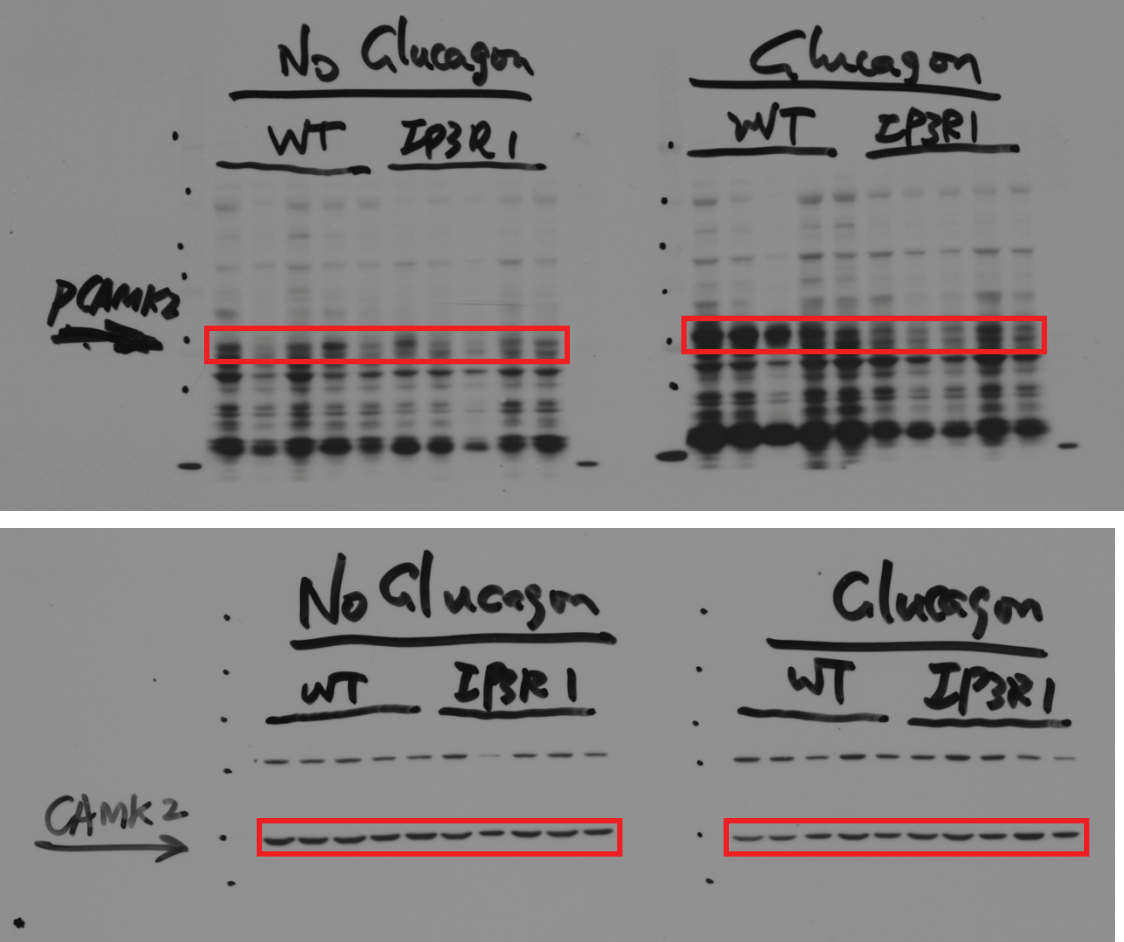
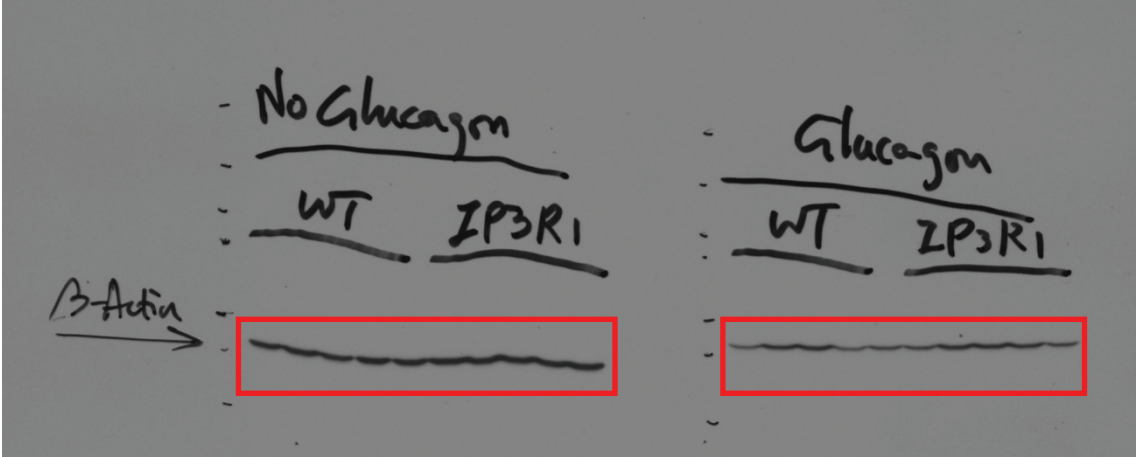
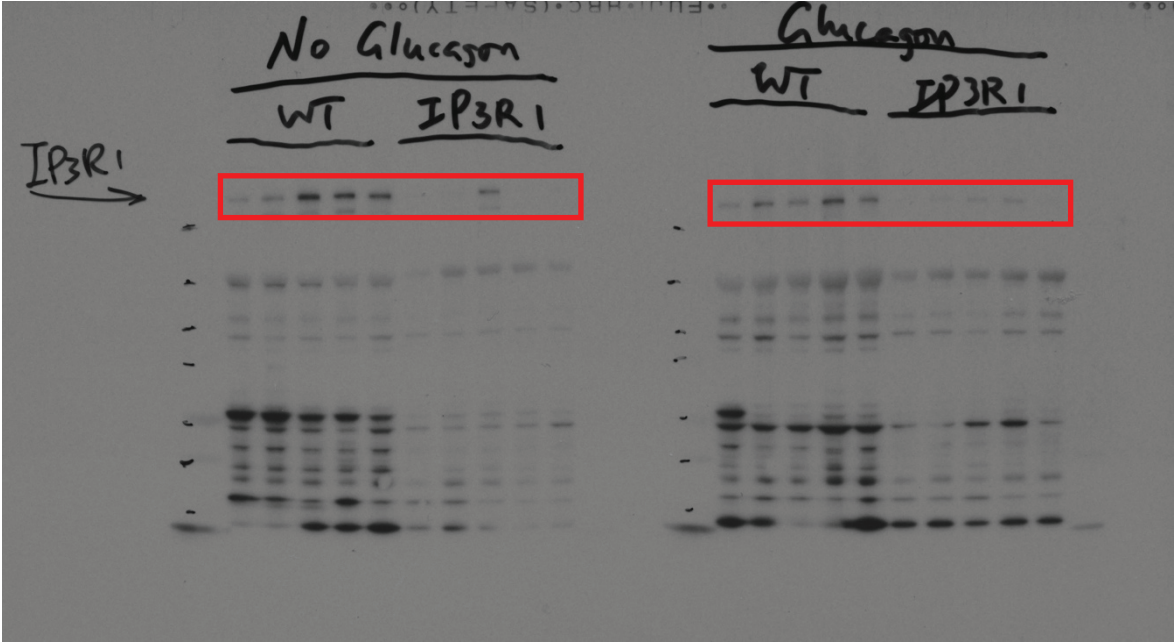


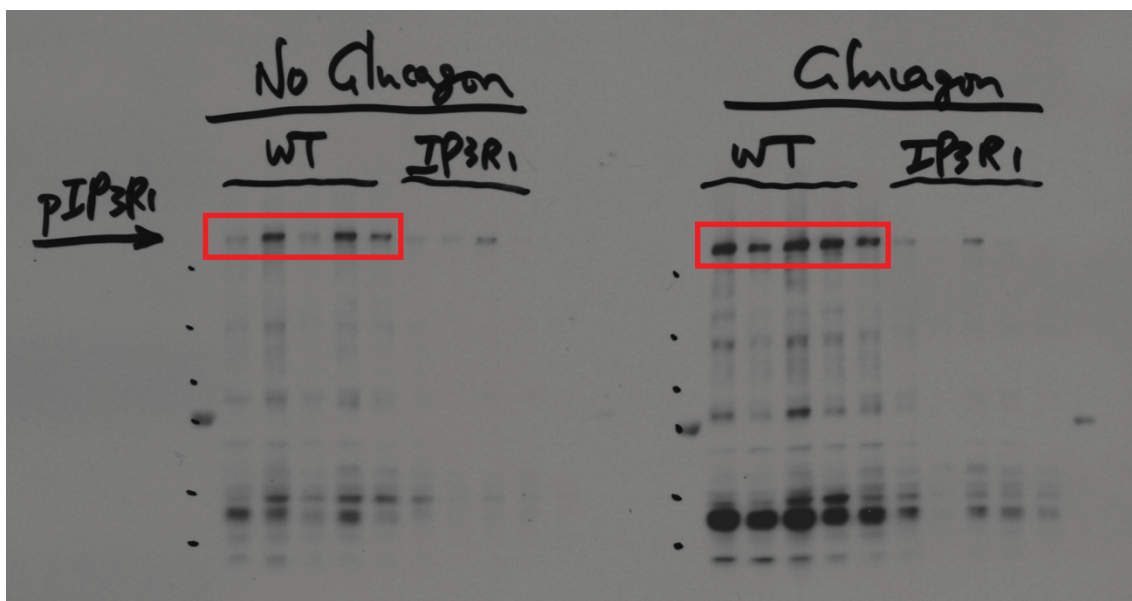
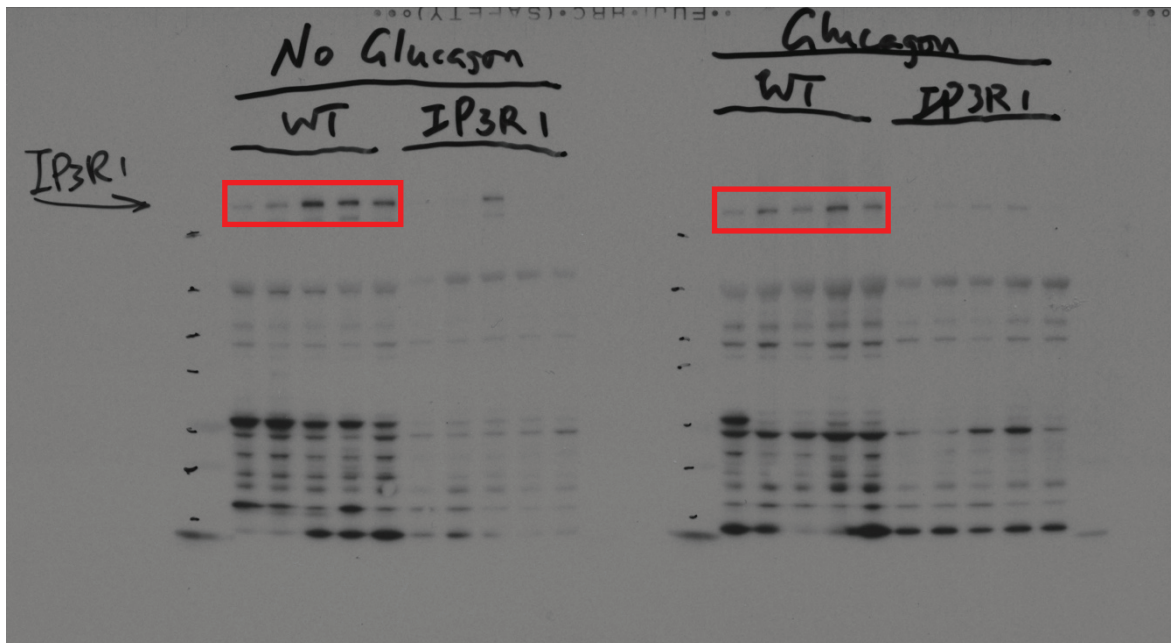
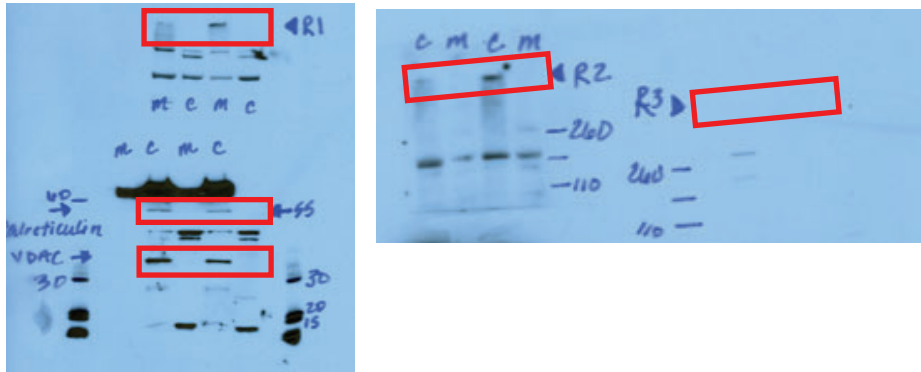
Figure 1f



Extended Data Figure 1b



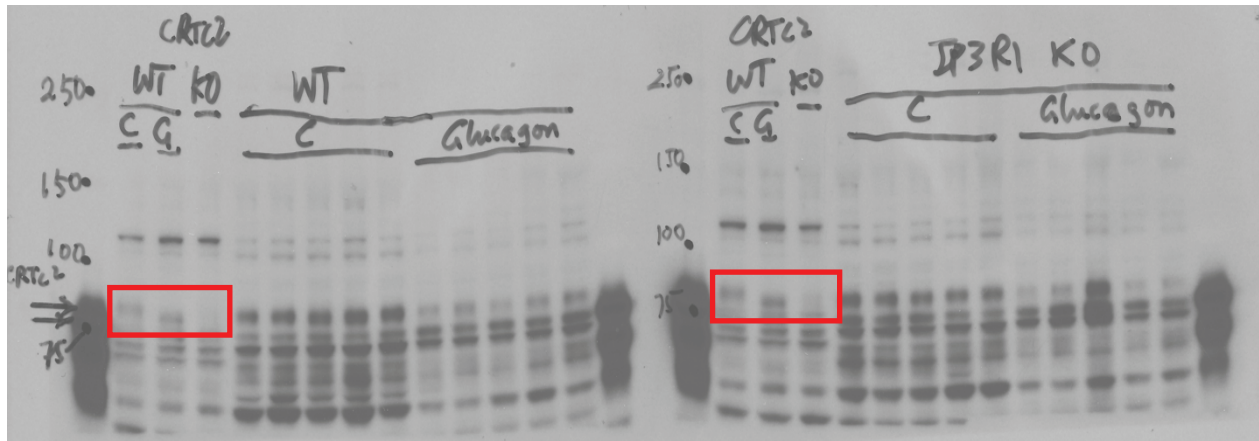
Extended Data Figure 1c



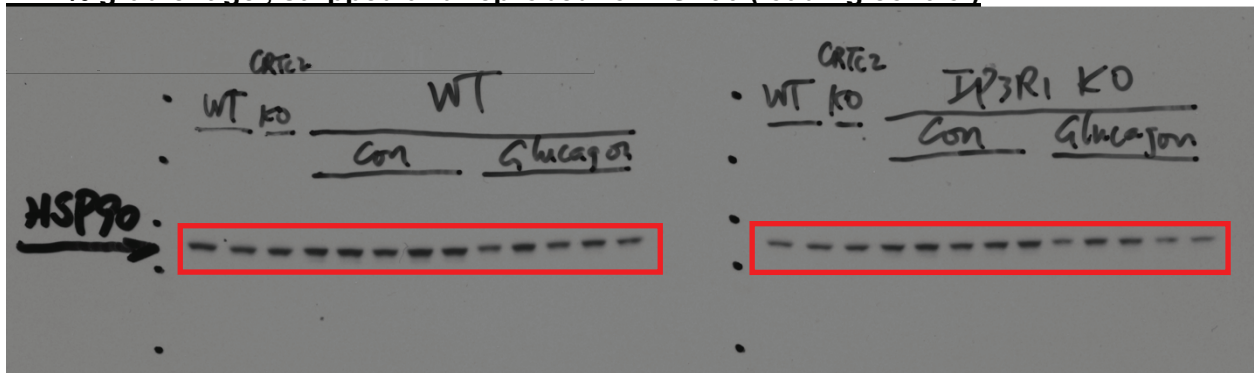


**Extended Data Figure 1d**

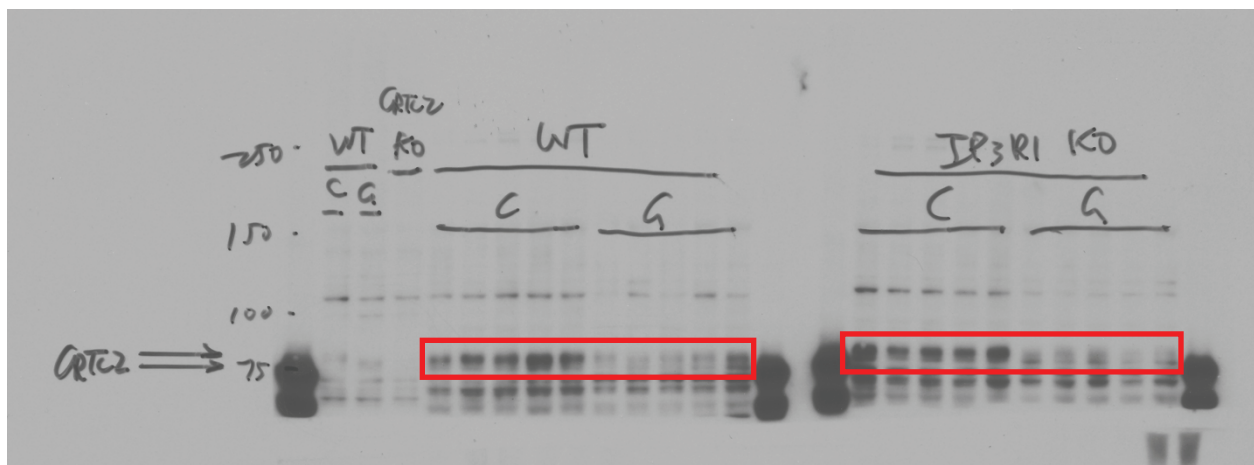
**4-12% gradient gel, optimized for hepatocyte controls**



**4-12% gradient gel, stripped and reprobbed for HSP90 (loading control)**

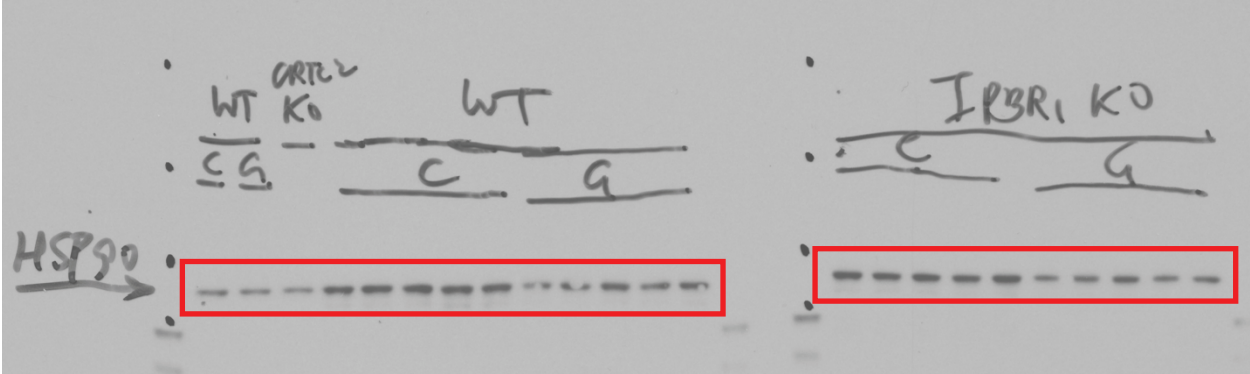


**8% gel, optimized for *in vivo* liver samples**

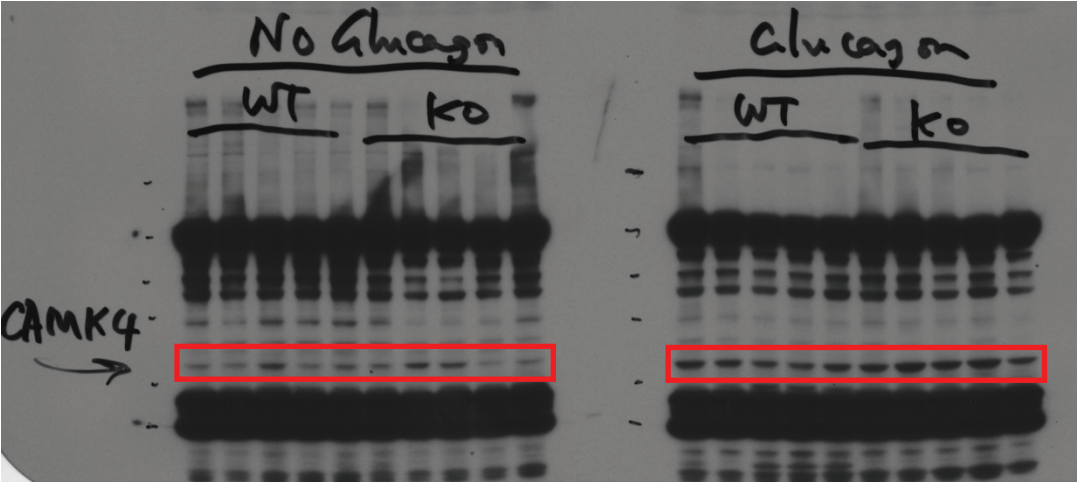
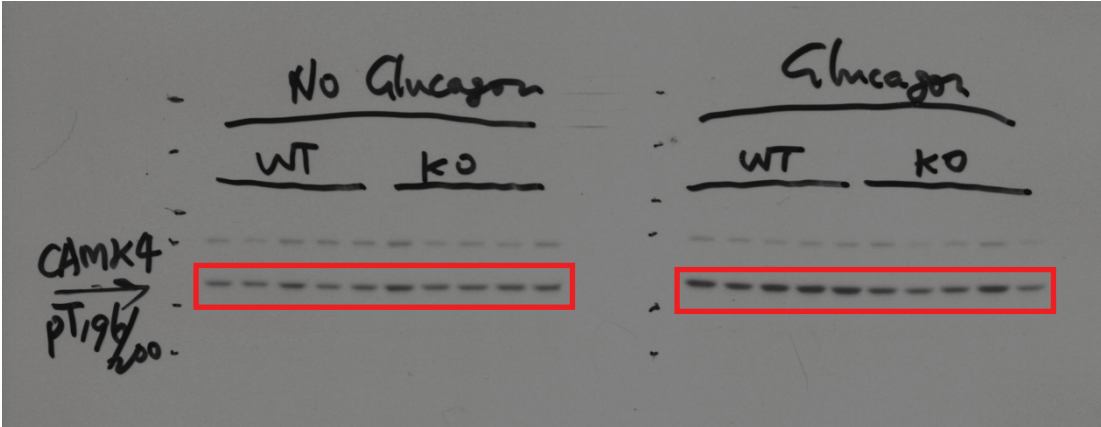




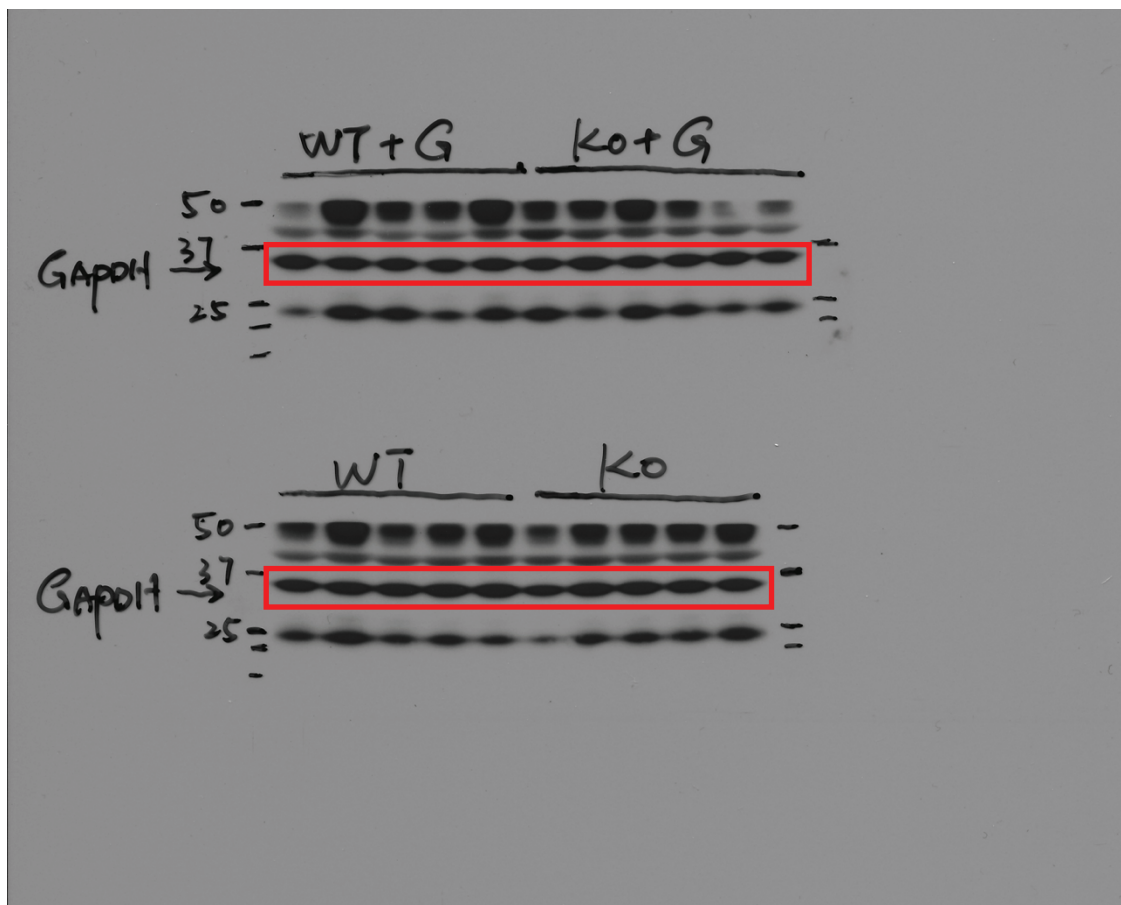
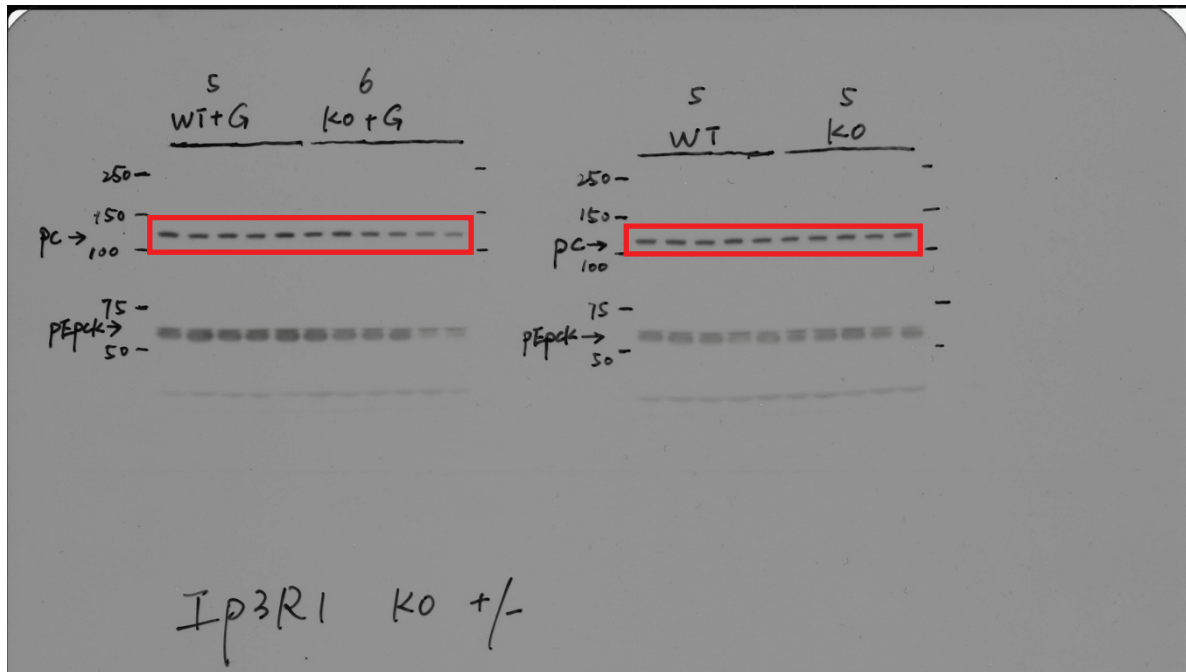
The 8% gel above, stripped and reprobed for HSP90 (loading control)



Extended Data Figure 1e

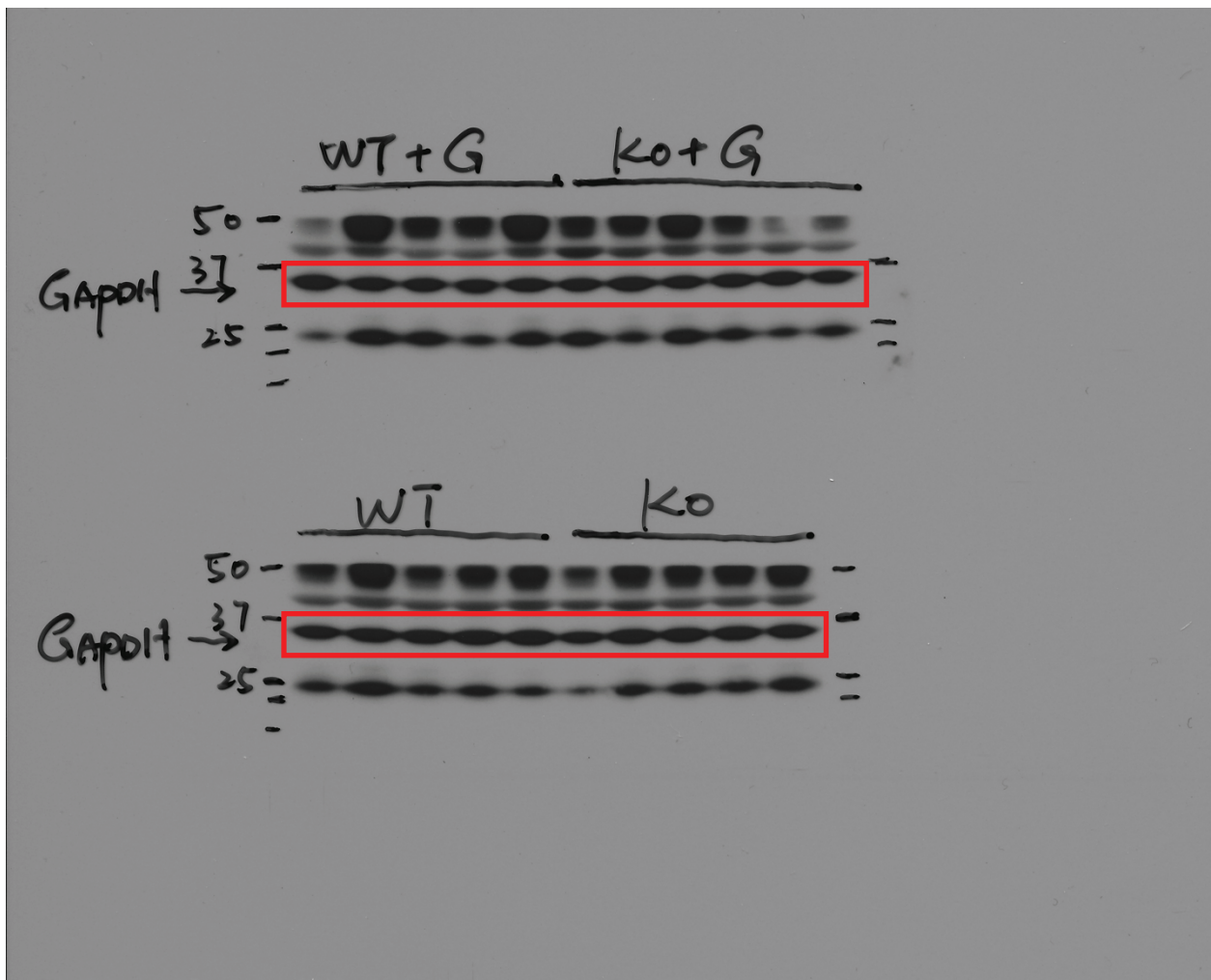
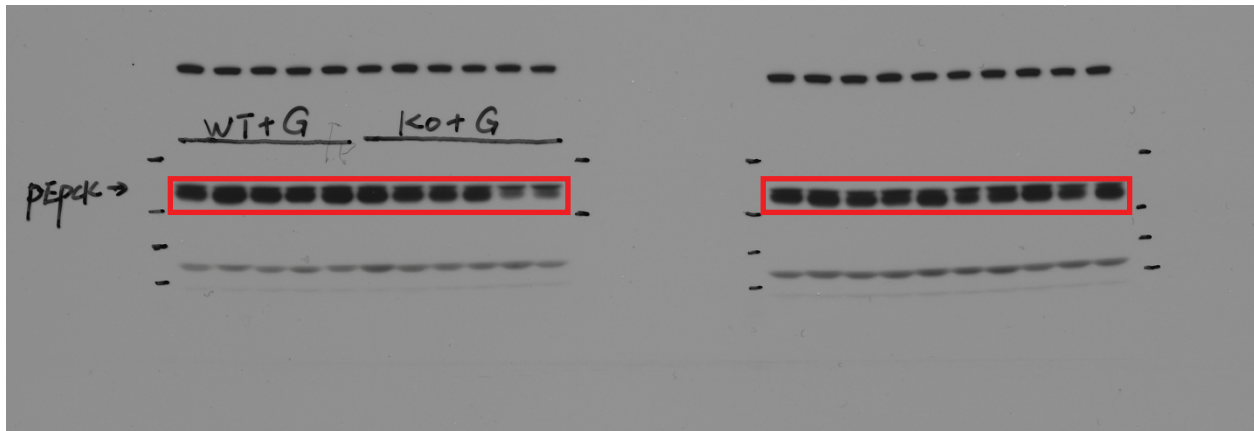


Extended Data Figure 3d

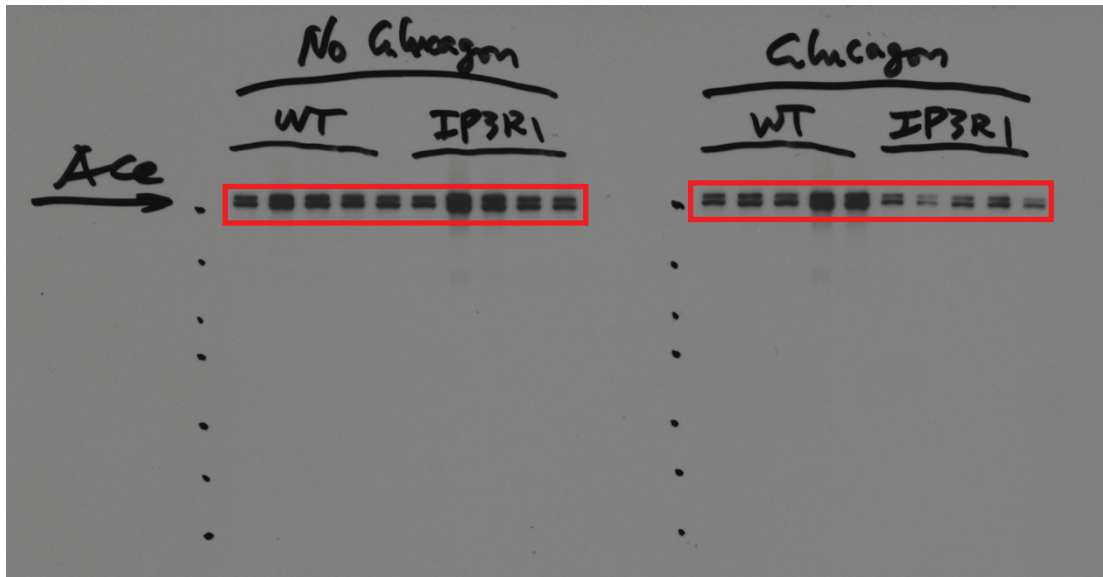
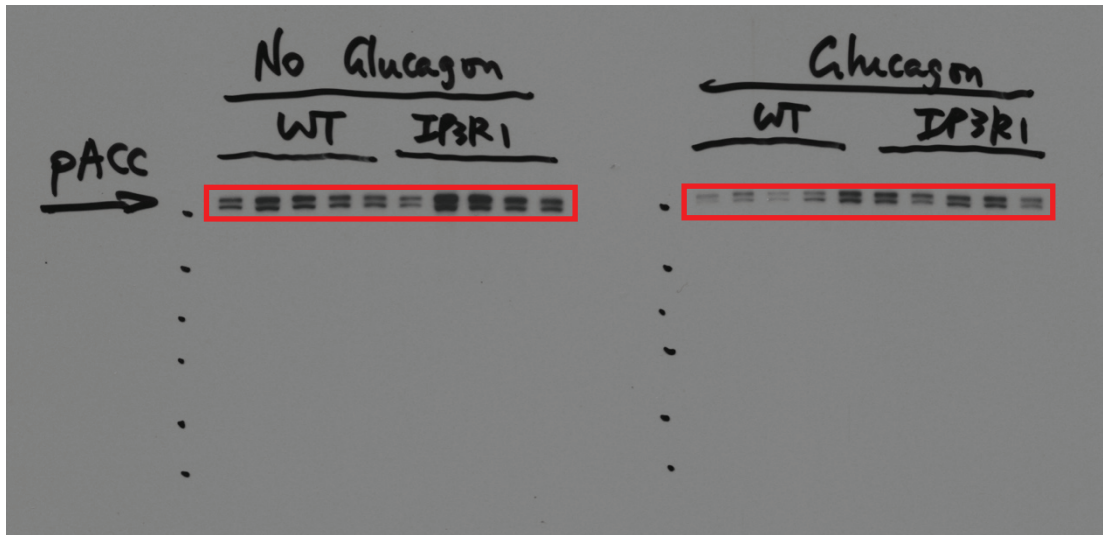




Extended Data Figure 3e



Extended Data Figure 3f



Extended Data Figure 3g

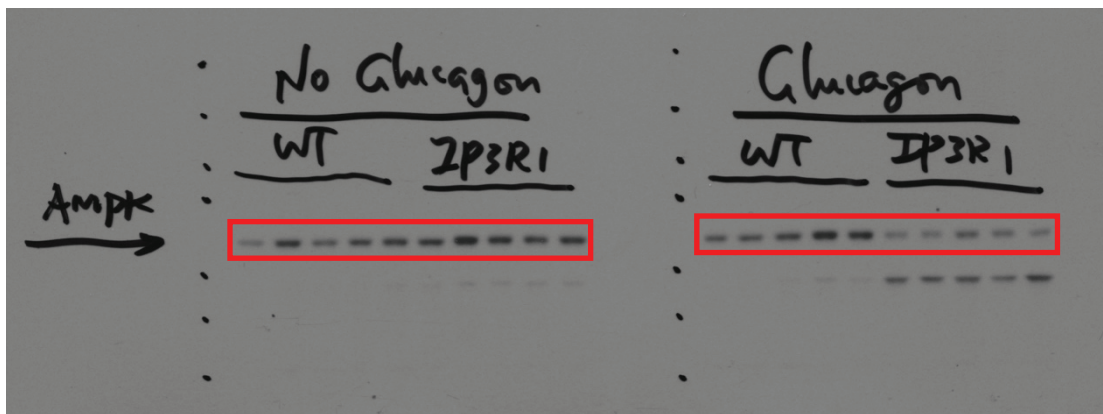
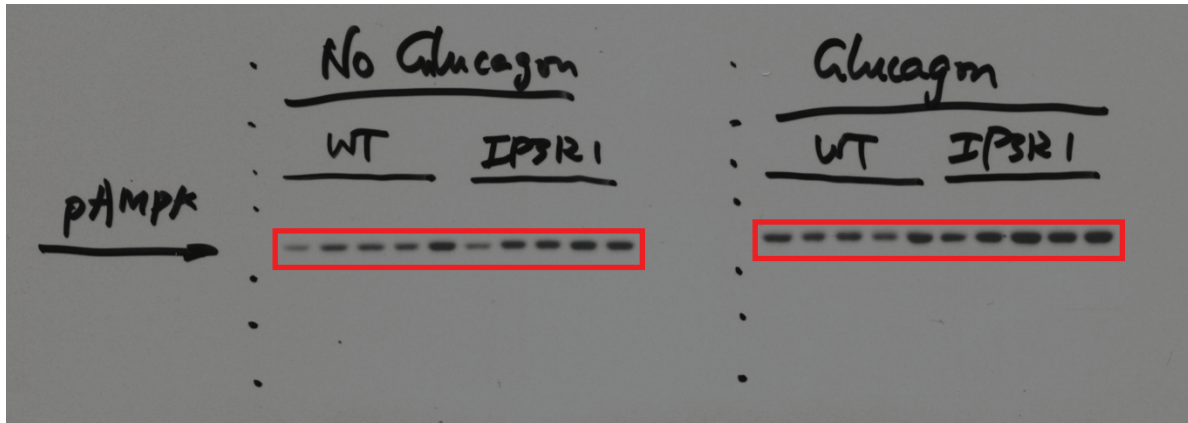
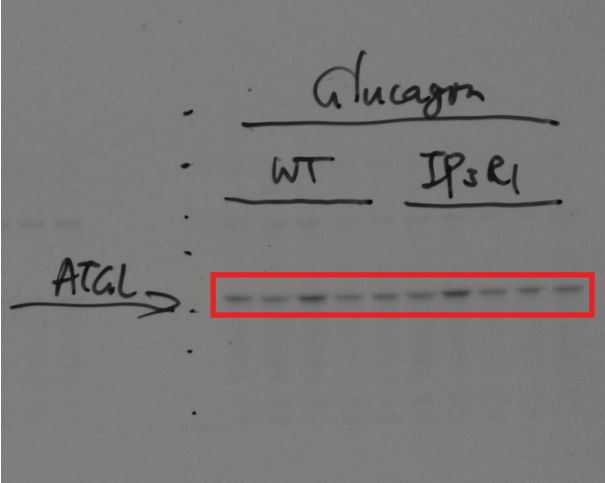
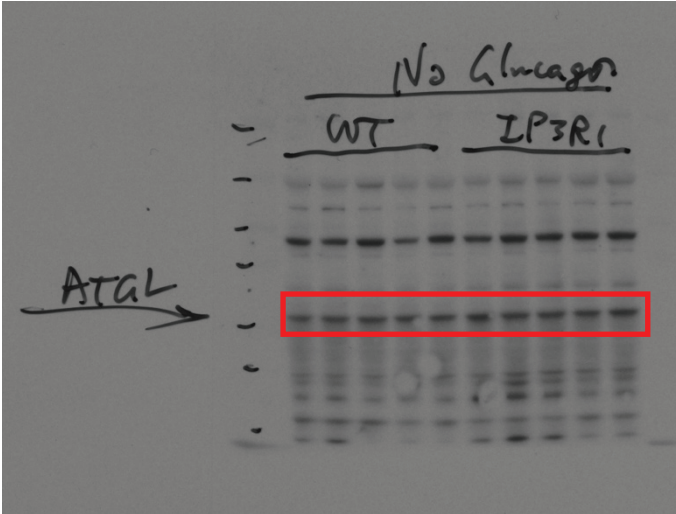
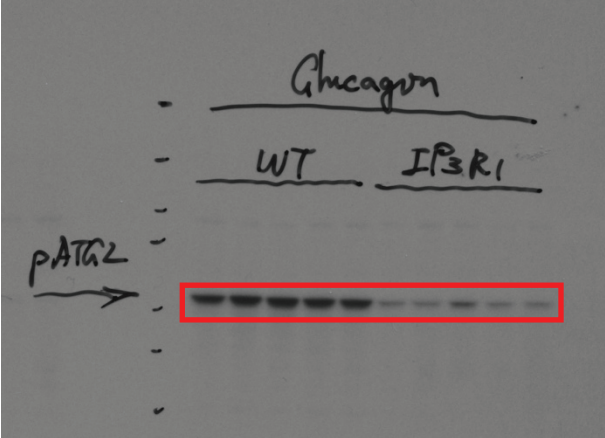
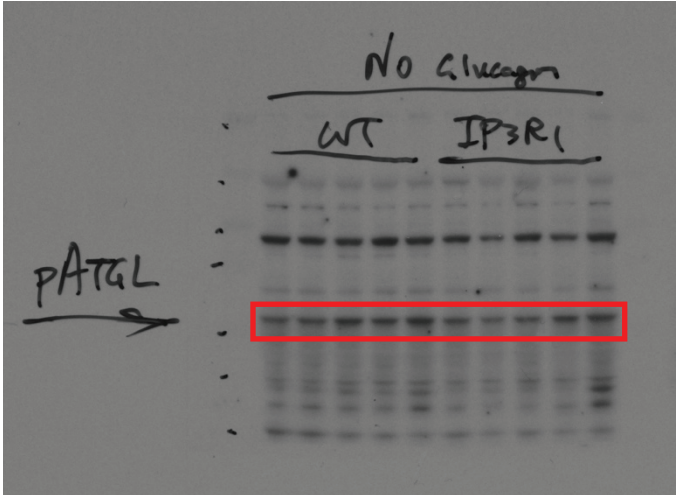
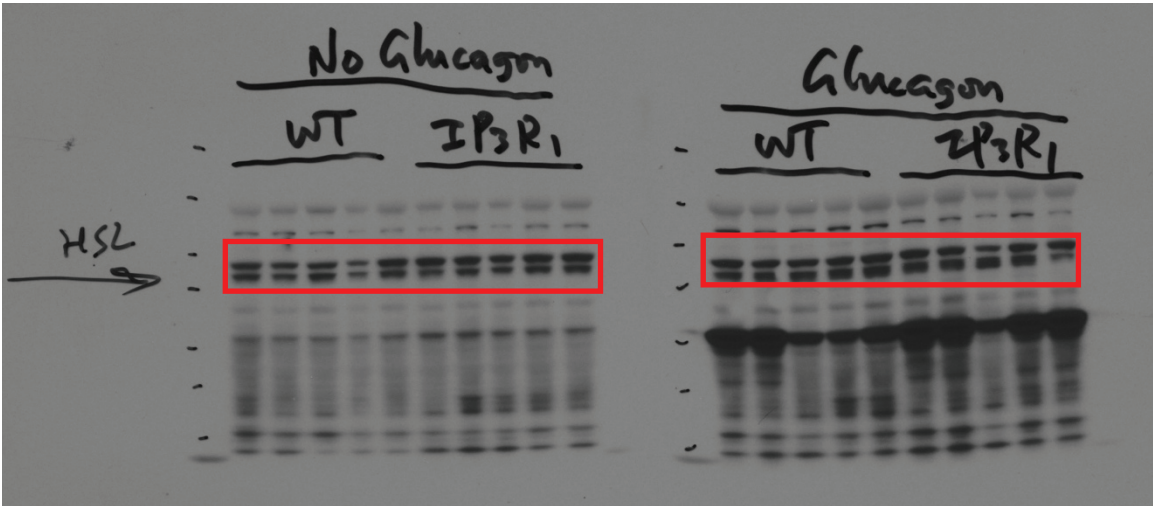
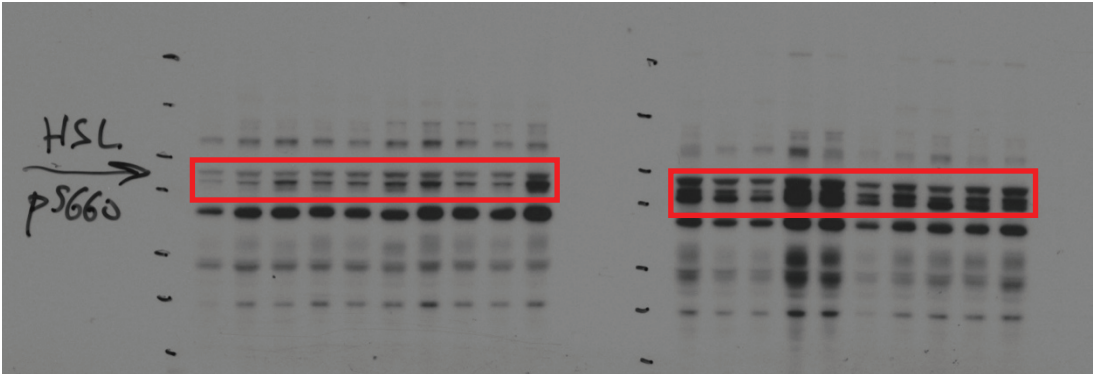




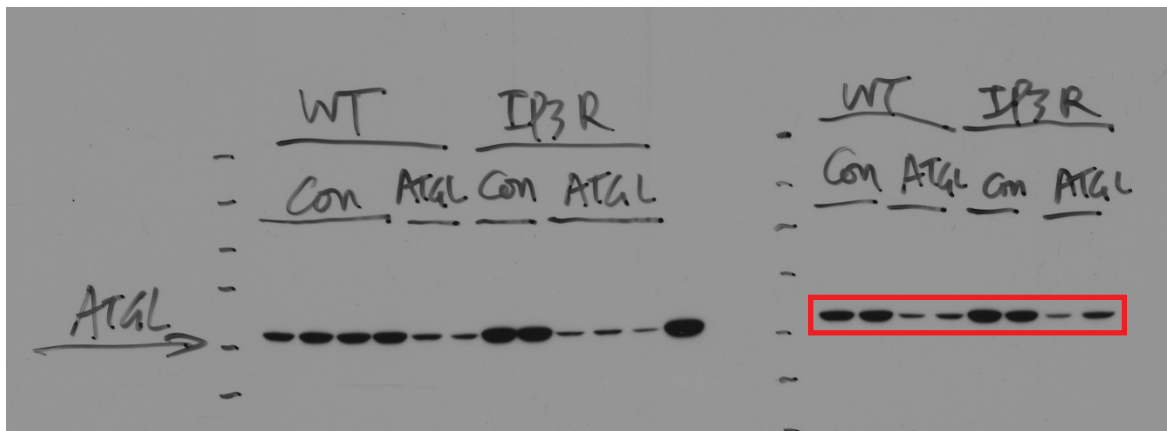
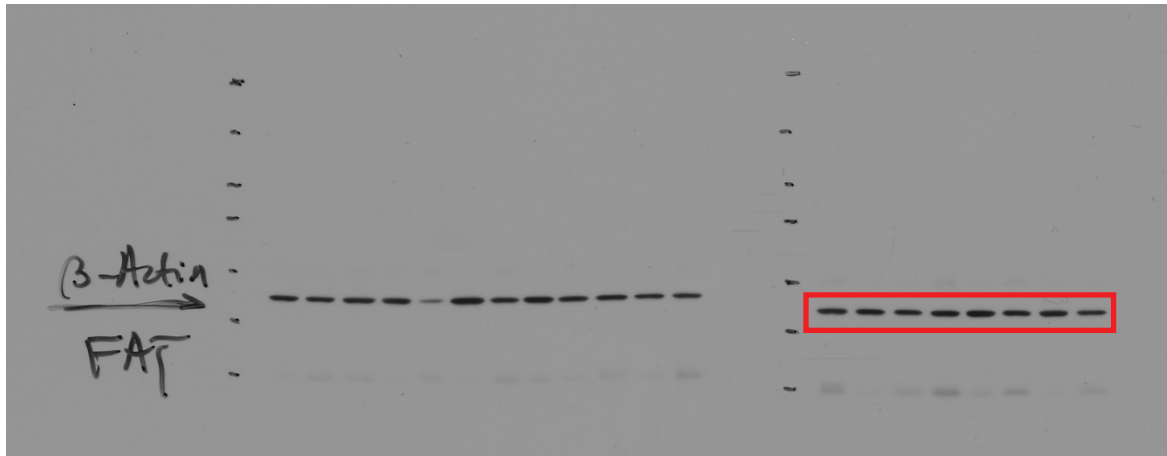
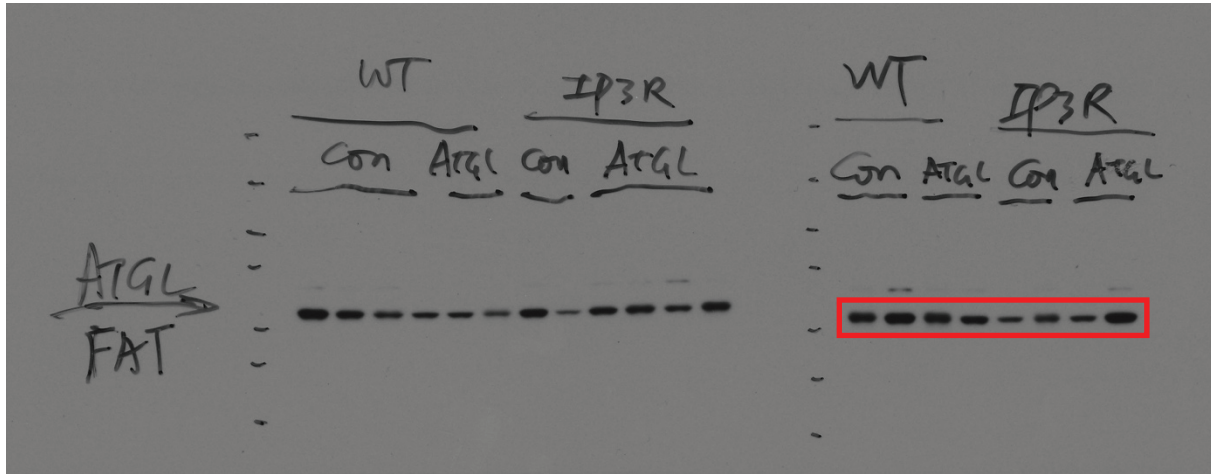
Figure 2a



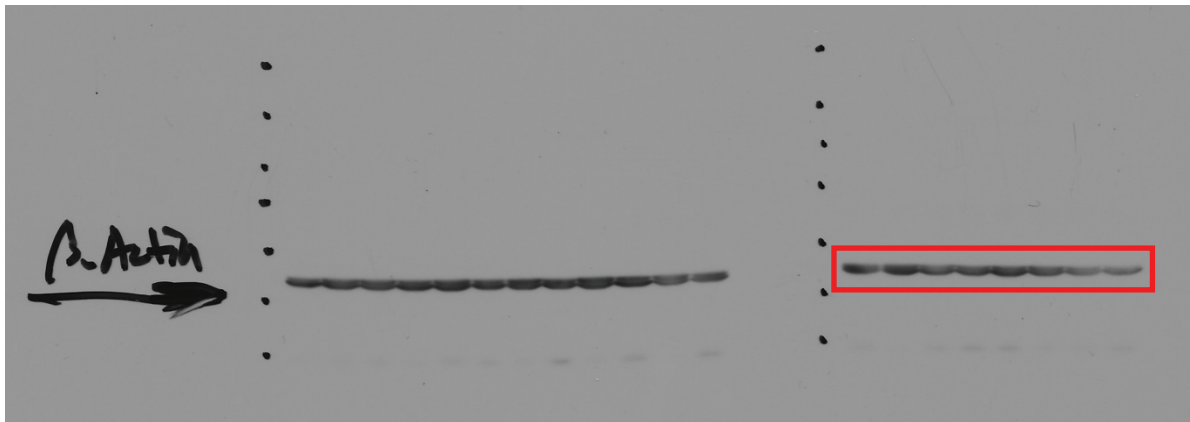
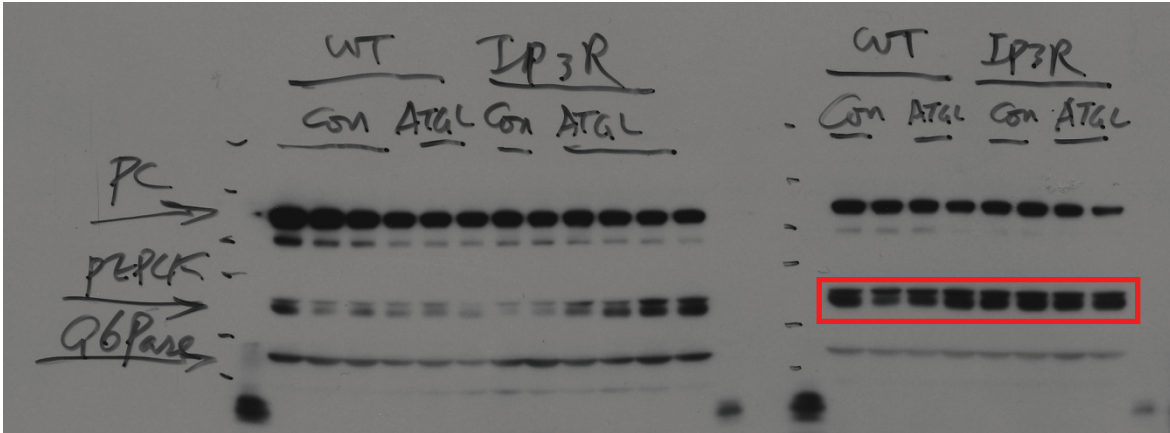
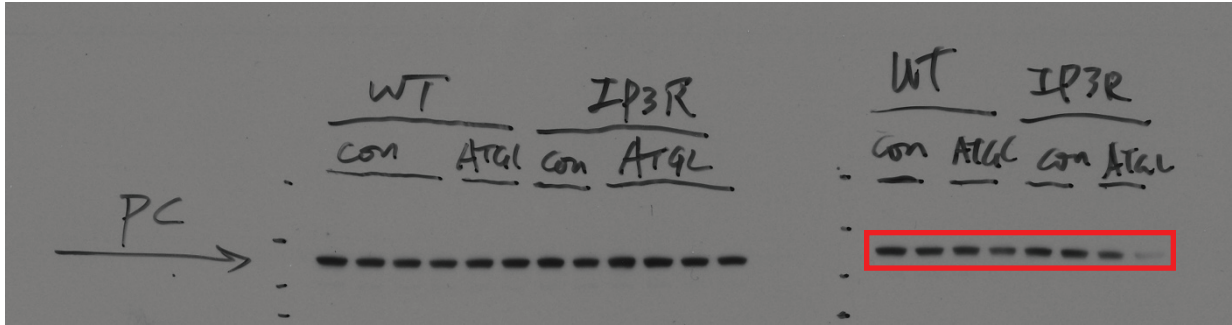
Extended Data Figure 3a



Extended Data Figure 9b-e







Extended Data Figure 7o

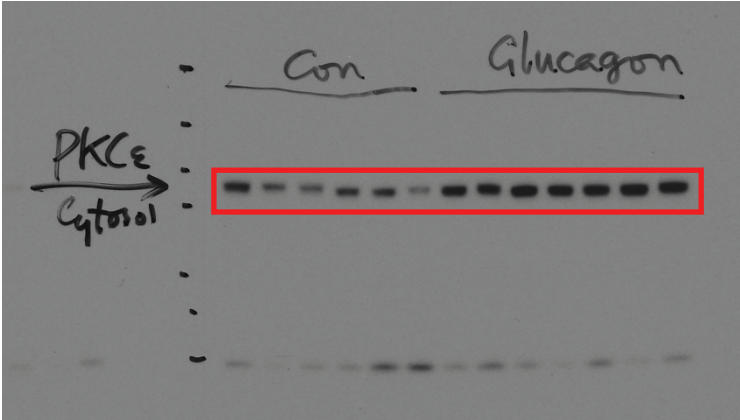
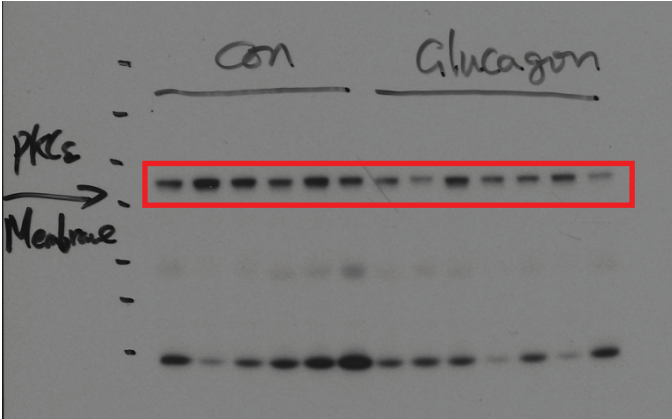


Figure 3f

