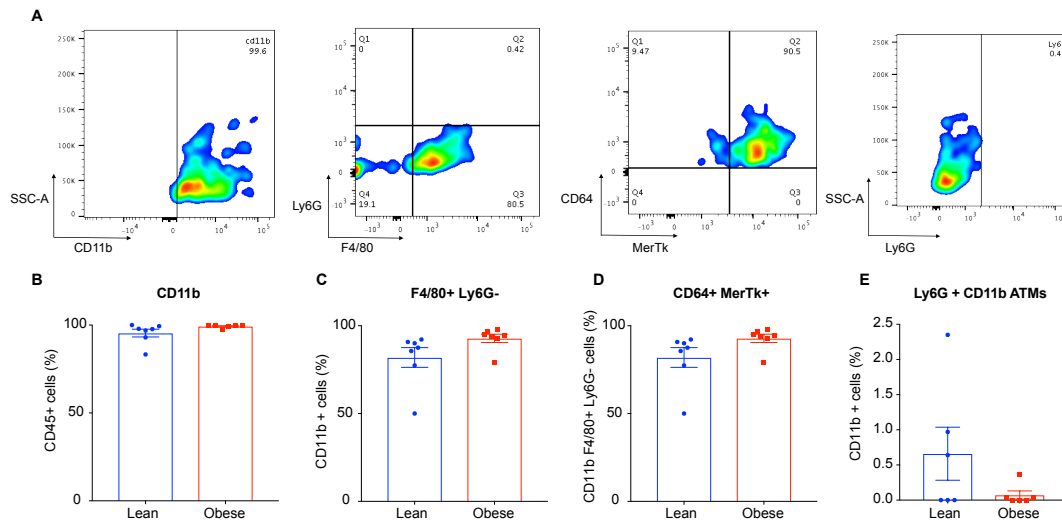


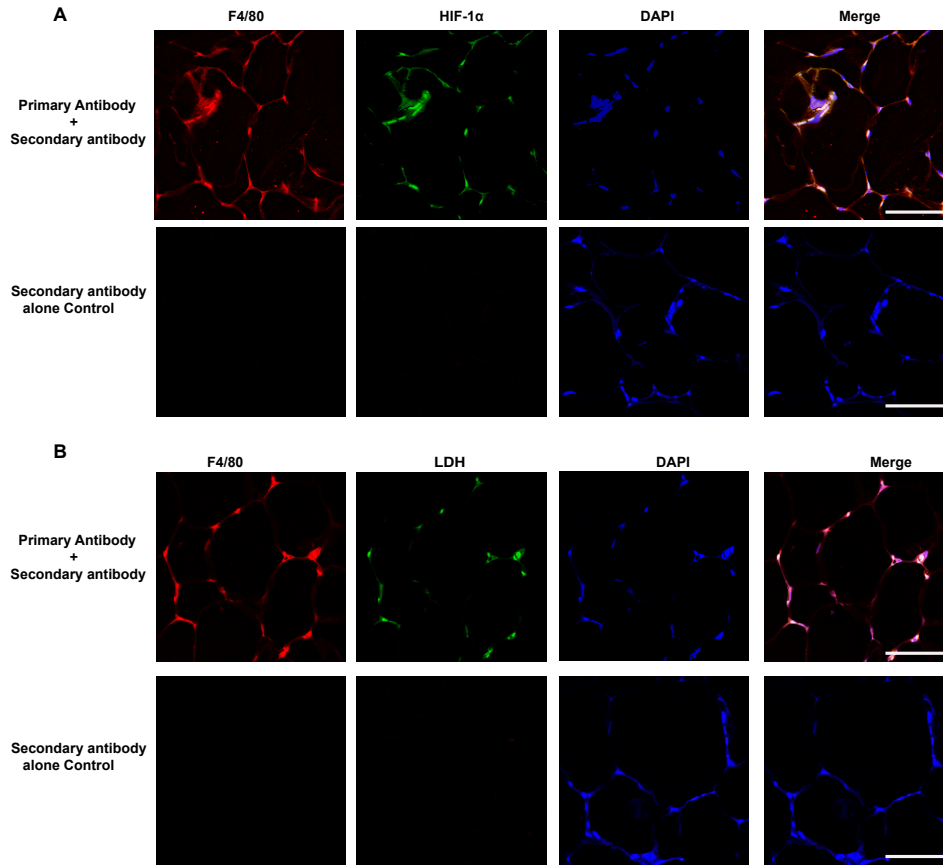
Supplementary Data File

Enhanced glycolysis and HIF-1 α activation in adipose tissue macrophages sustains local and systemic interleukin-1 β production in obesity

Monika Sharma¹, Ludovic Boytard², Tarik Hadi², Graeme Koelwyn¹, Russell Simon¹, Mireille Ouimet¹, Lena Seifert², Westley Spiro¹, Bo Yan¹, Susan Hutchison¹, Edward A. Fisher¹, Ravichandran Ramasamy³, , Bhama Ramkhelawon^{2*}, Kathryn J Moore^{1*}

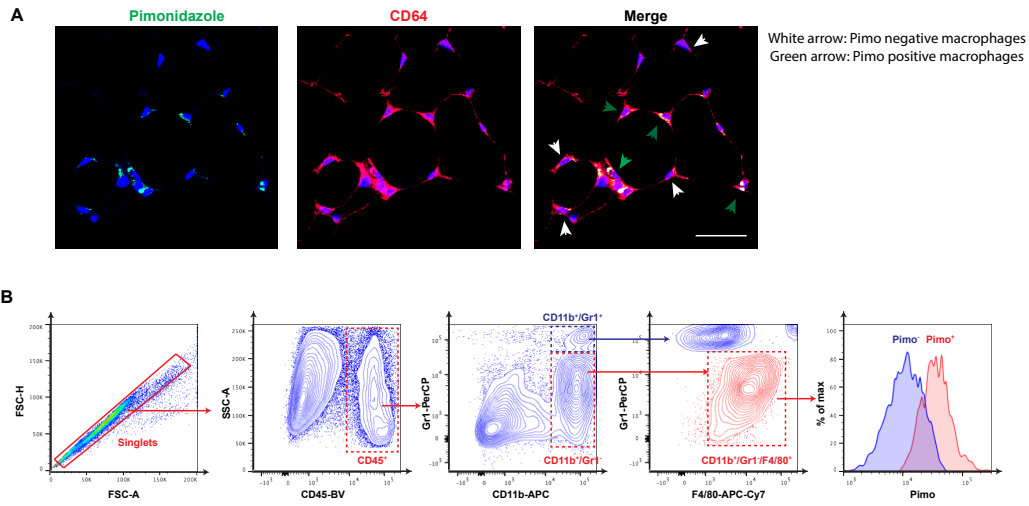


Supplementary Figure 1: A) Gating strategy for flow cytometric analysis of CD11b, F4/80, Ly6G, CD64, MerTk populations performed using Flowjo software. Flow cytometric quantification of **B)** CD11b, **C)** F4/80+Ly6G-, **D)** CD64+MerTk+, and **E)** Ly6G in ATMs from lean and obese wild type (WT) mice (n=6-7).



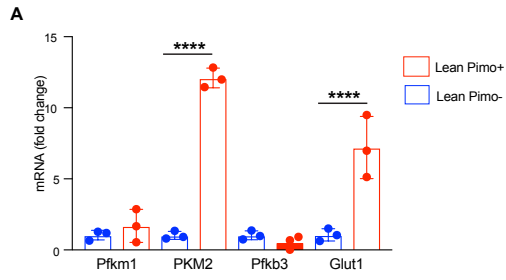
Supplementary Figure 2: Representative immunofluorescence staining of the **A)** macrophage marker F4/80 (red), HIF-1 α (green), DAPI (blue), and **B)** macrophage marker F4/80 (red), lactate dehydrogenase (LDH; green), DAPI (blue) in WAT of wild type mice fed HFD for 20 weeks. Colocalization of HIF-1 α with F4/80 and DAPI is shown in the merged image (arrows). Lower panel shows secondary antibody alone controls. Scale bar =100 μ m.

Supplementary Figure 3



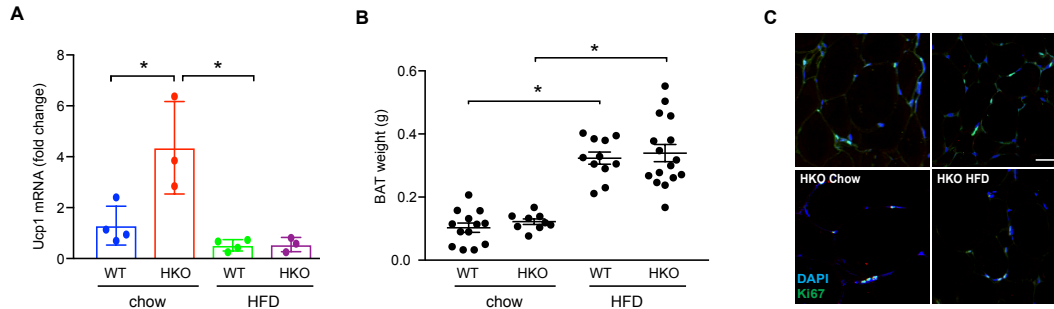
Supplementary Figure 3: A) Representative images of immunofluorescence staining for pimonidazole (green), CD64 (red) and DAPI nuclear stain (blue) in WAT of obese wild type mice. Scale bar = 100 μ m. **B)** Gating strategy for flow cytometer as shown for singlets, CD45, CD11b, F4/80 and pimonidazole populations performed by Flowjo analysis.

Supplementary Figure 4



Supplementary Figure 4: Relative mRNA expression of *Pfk1*, *Pkm2*, *Pfk3* and *Glut1* in Pimonidazole (Pimo)- and Pimo+ ATMs isolated from lean mice (n=3). Data are mean \pm s.e.m. ****p < 0.001.

Supplementary Figure 5



Supplementary Figure 5: A) Fold change in *Ucp1* mRNA in WAT of lean and obese WT and HKO mice. **B)** BAT weight of WT and HKO mice after 20 weeks of chow and HFD diet. **C)** Immunofluorescence staining of Ki67 (green) and DAPI nuclear stain (blue) in WAT of lean and obese WT and HKO mice. Scale bar = 100 μ m.