

## Supplementary Online Content

1  
2  
3  
4  
5  
6  
7  
8  
9  
10  
11  
12  
13  
14  
15  
16  
17  
18  
19  
20  
21  
22  
23  
24  
25  
26  
27  
28

Shen C, Wang Z, Zhao F, et al. Treatment of Five Critically Ill Patients With COVID-19 With Convalescent Plasma. *JAMA*. doi:10.1001/jama.2020.4783

**eTable.** Variation of IgM, IgG ELISA titers and NAT before and after convalescent plasma transfusion in recipients.

**eFigure 1.** Computed tomography (CT) scan of the patient 1 (A) before and (B) 3 days-post convalescent plasma transfusion.

**eFigure 2.** Computed tomography (CT) scan of the patient 2 (A) before and (B) 3 days-post convalescent plasma transfusion.

**eFigure 3.** Computed tomography (CT) scan of the patient 3 (A) before and (B) 3 days-post convalescent plasma transfusion.

**eFigure 4.** Computed tomography (CT) scan of the patient 4 (A) before and (B) 3 days-post convalescent plasma transfusion.

**eFigure 5.** Computed tomography (CT) scan of the patient 5 (A) before and (B) 3 days-post convalescent plasma transfusion.

This supplementary material has been provided by the authors to give readers additional information about their work.

29

30 **eTable 1.** Variation of IgM, IgG ELISA titers and NT before and after convalescent plasma  
31 transfusion in recipients.

	<b>Patients</b>				
<b><sup>a</sup>RBD-specific antibody ELISA titer</b>	<b>1</b>	<b>2</b>	<b>3</b>	<b>4</b>	<b>5</b>
<b>IgG ELISA titer (before transfusion)</b>	48600	1800	1800	48600	16200
<b>IgG ELISA titer (Day 1 after transfusion)</b>	145800	1800	5400	145800	48600
<b>IgG ELISA titer (Day 3 after transfusion)</b>	145800	5400	5400	145800	145800
<b>IgG ELISA titer (Day 7 after transfusion)</b>	145800	5400	5400	145800	145800
<b>IgM ELISA titer (before transfusion)</b>	48600	5400	5400	145800	48600
<b>IgM ELISA titer (Day 1 after transfusion)</b>	48600	5400	5400	145800	48600
<b>IgM ELISA titer (Day 3 after transfusion)</b>	145800	5400	5400	437400	145800
<b>IgM ELISA titer (Day 7 after transfusion)</b>	145800	16200	16200	437400	145800
<b><sup>b</sup>NT (before transfusion)</b>	160	40	40	80	80
<b>NT (Day 1 after transfusion)</b>	320	80	80	160	240
<b>NT (Day 3 after transfusion)</b>	320	80	120	160	240
<b>NT (Day 7 after transfusion)</b>	320	160	160	240	480

32

33 <sup>a</sup>Receptor binding domain;

34 <sup>b</sup>Neutralizing titer.

35

36

37

38

39

40

41

42

43

44

45

46

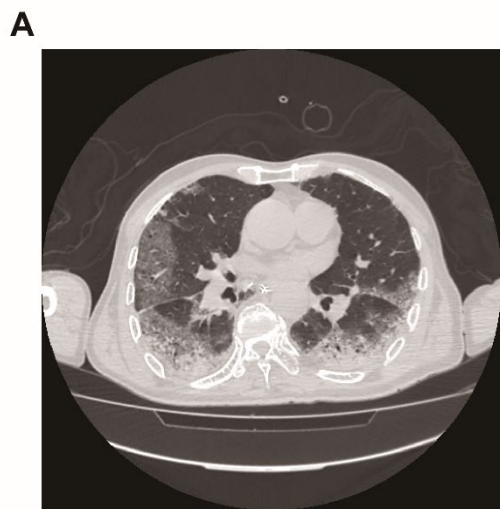
47

48

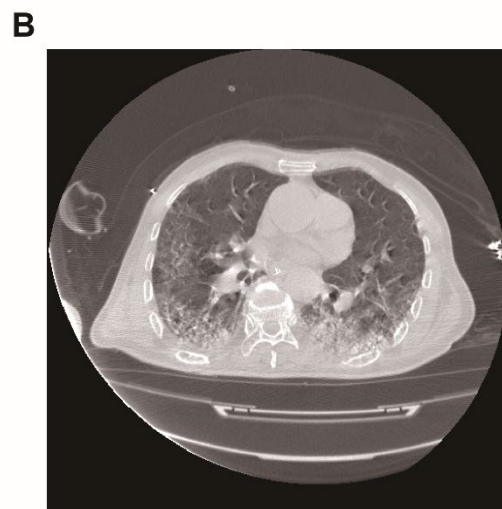
49

50

51



**1 day before plasma transfusion**



**3 days-post plasma transfusion**

52 **eFigure 1.** Computed tomography (CT) scan of the patient 1 (A) before and (B) 3 days-post

53 convalescent plasma transfusion.

54

55

56

57

58

59

60

61

62

63

64

65

**A**

66

67

68

69

70

71

72

73

74

75

76

77

78

79

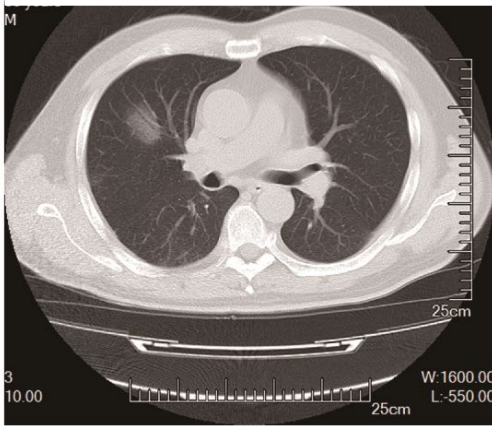
80

81

82

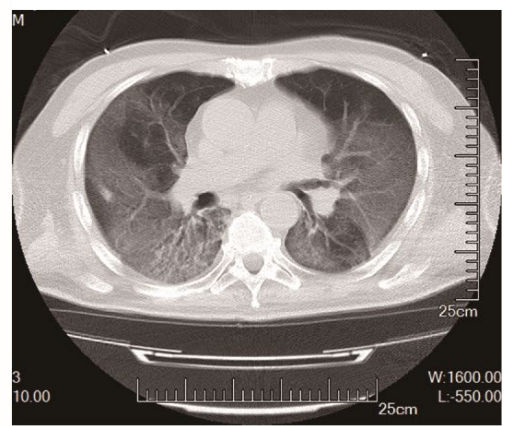
83

84



**before plasma transfusion**

**B**



**after plasma transfusion**

85

**eFigure 2.** Computed tomography (CT) scan of the patient 2 (A) before and (B) after

86

convalescent plasma transfusion.

87

88

89

90

91

92

93

94

95

96

97

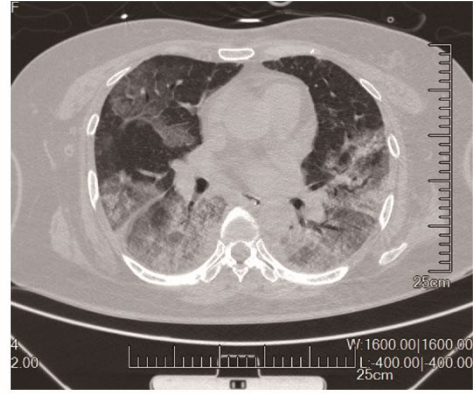
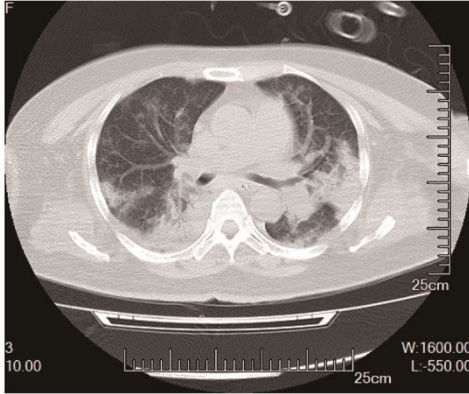
98

99

**A**

**B**

100



101

102

103

104

105

106

107

108

109

110

111

112

113

**before plasma transfusion**

**after plasma transfusion**

114

115

116

117 **eFigure 3.** Computed tomography (CT) scan of the patient 3 (A) before and (B) after  
118 convalescent plasma transfusion.

119

120

121

122

123

124

125

126

127

128

129

130

131

132

133

134

135

136

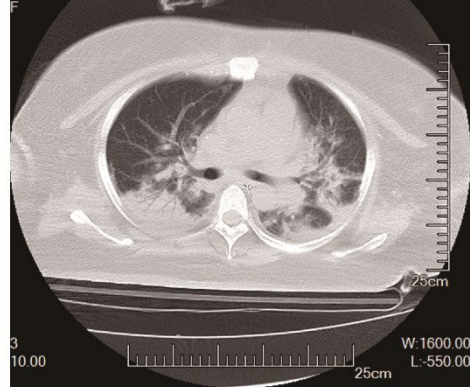
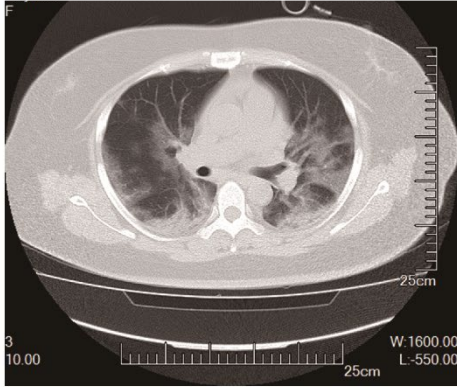
137

**A**

**B**

138

139



140

141

142

143

144

145

**before plasma transfusion**

**after plasma transfusion**

146

147

148 **eFigure 4.** Computed tomography (CT) scan of the patient 4 (**A**) before and (**B**) after  
149 convalescent plasma transfusion.

150

151

152

153

154

155

156

157

158

159

160

161

162

163

164

165

166

167

168

169

170

171

172

173

174

175

176

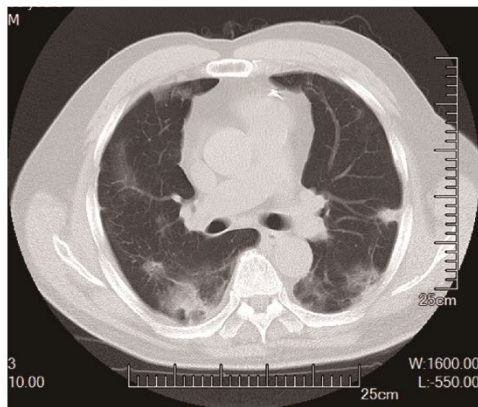
177

178

179 **eFigure 5.** Computed tomography (CT) scan of the patient 5 (A) before and (B) after  
180 convalescent plasma transfusion.

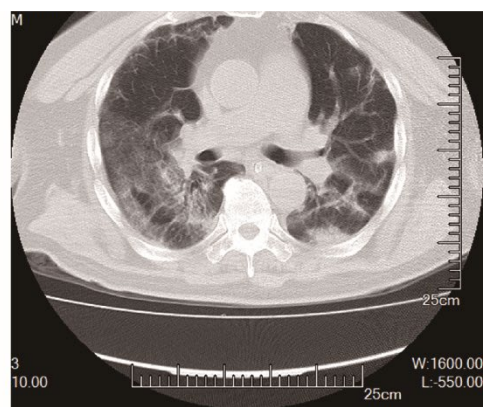
181

**A**



**before plasma transfusion**

**B**



**after plasma transfusion**