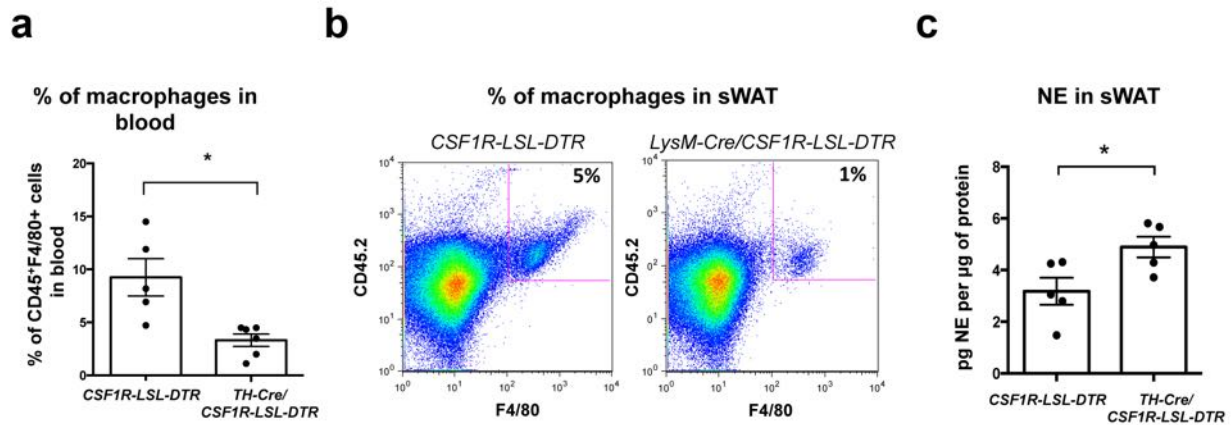


Supplementary Figure 11



Supplementary Figure 11. Depletion of macrophages upregulates NE content in adipose tissue.

(a) Percentages of CD45.2, F4/80-double positive cells in blood of control *CSF1R-LSL-DTR* and *LysM-Cre/CSF1R-LSL-DTR* mice after 4 doses of DT. Each data point represents one mouse. $n = 5$ mice for *CSF1R-LSL-DTR*, and $n = 6$ mice for *LysM-Cre/CSF1R-LSL-DTR*, $*P = 0.025$. Data are representative of 2 experiments. **(b)** Representative flow cytometry plots showing percentages of CD45.2, F4/80-double positive cells in sWAT of control *CSF1R-LSL-DTR* and *LysM-Cre/CSF1R-LSL-DTR* mice after 4 doses of DT. Data are representative of 2 experiments. **(c)** NE content in sWAT fat pads isolated from control *CSF1R-LSL-DTR* and *LysM-Cre/CSF1R-LSL-DTR* mice after 4 doses of DT. Each data point represents one mouse, $n = 5$ mice per group, $*P = 0.034$. Data are representative of 2 experiments. Data from panels **a,c** were analyzed by two-tailed Student's *t*-test and are shown as average \pm SEM.