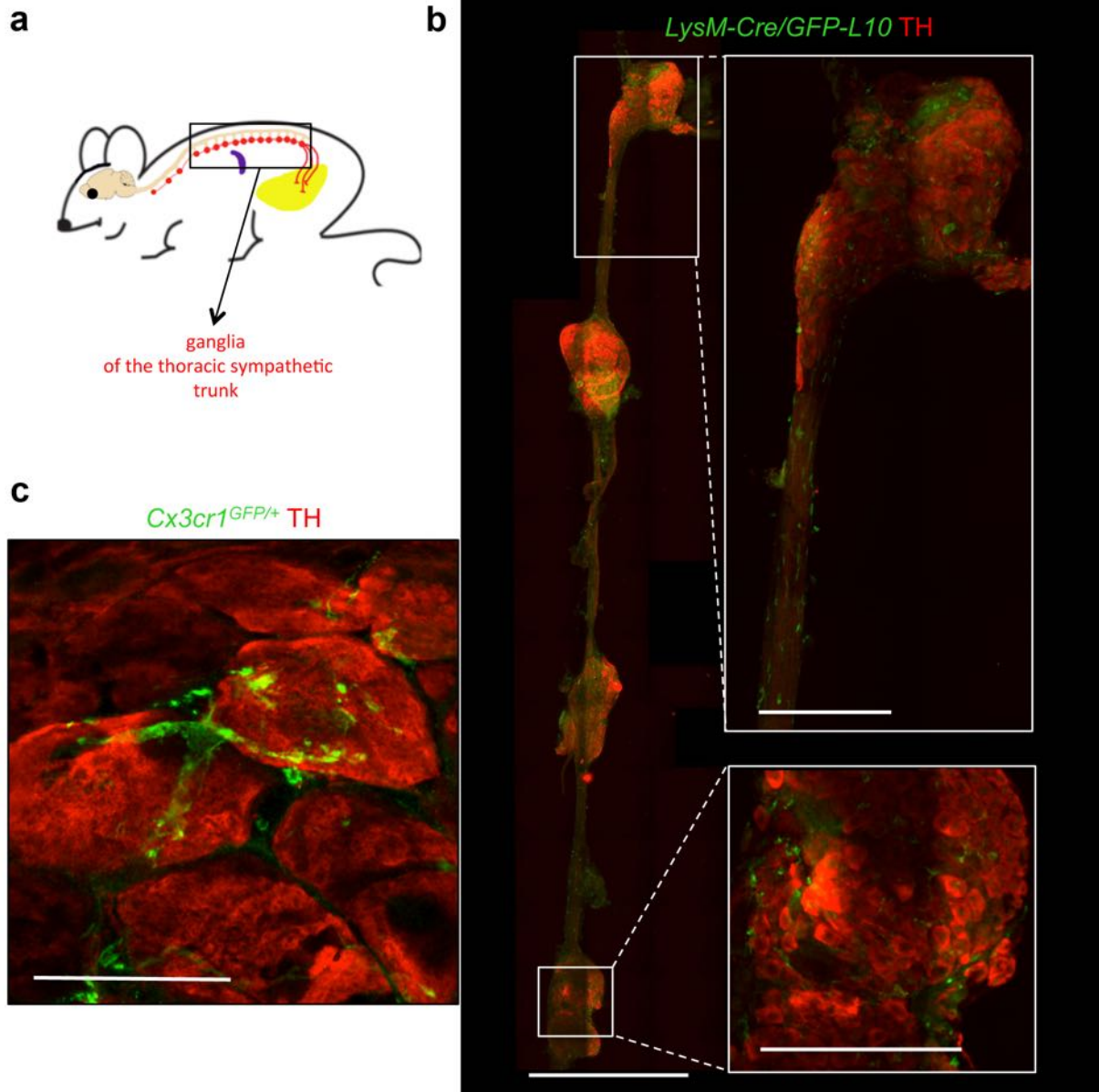


Supplementary Figure 2



Supplementary Figure 2. Sympathetic neuron-associated $Cx3cr1^{GFP/+}$ cells are present in different compartments of the SNS.

(a) Schematic representation of the sympathetic thoracic chain ganglia. (b) Confocal images from sympathetic thoracic chain isolated from *LysM-Cre/GFP-L10* mice and stained using anti-TH (red) and anti-GFP (green) antibodies. Images are representative of 3 similar experiments. Scale bar, 0.5 mm. Boxed regions represent higher magnification of the same micrograph - scale bars, 125 μm . (c) Confocal images from sympathetic chain isolated from *Cx3cr1^{GFP/+}* mice and stained using anti-TH (red) and anti-GFP (green) antibodies. Images are representative of 3 similar experiments. Scale bar, 25 μm .