

Google Health Trends performance reflecting dengue incidence for the Brazilian states

Daniel Romero-Alvarez, Nidhi Parikh, Dave Osthus, Kaitlyn Martinez, Nicholas Generous, Sara del Valle, Carrie A. Manore

Additional file: Plots of multiple and simple linear models between Google Health Trends data and weekly dengue incidence for Brazil

Brazil (BR)

Dengue incidence vs. Google Health Trends (2011–2016)

Definitions:

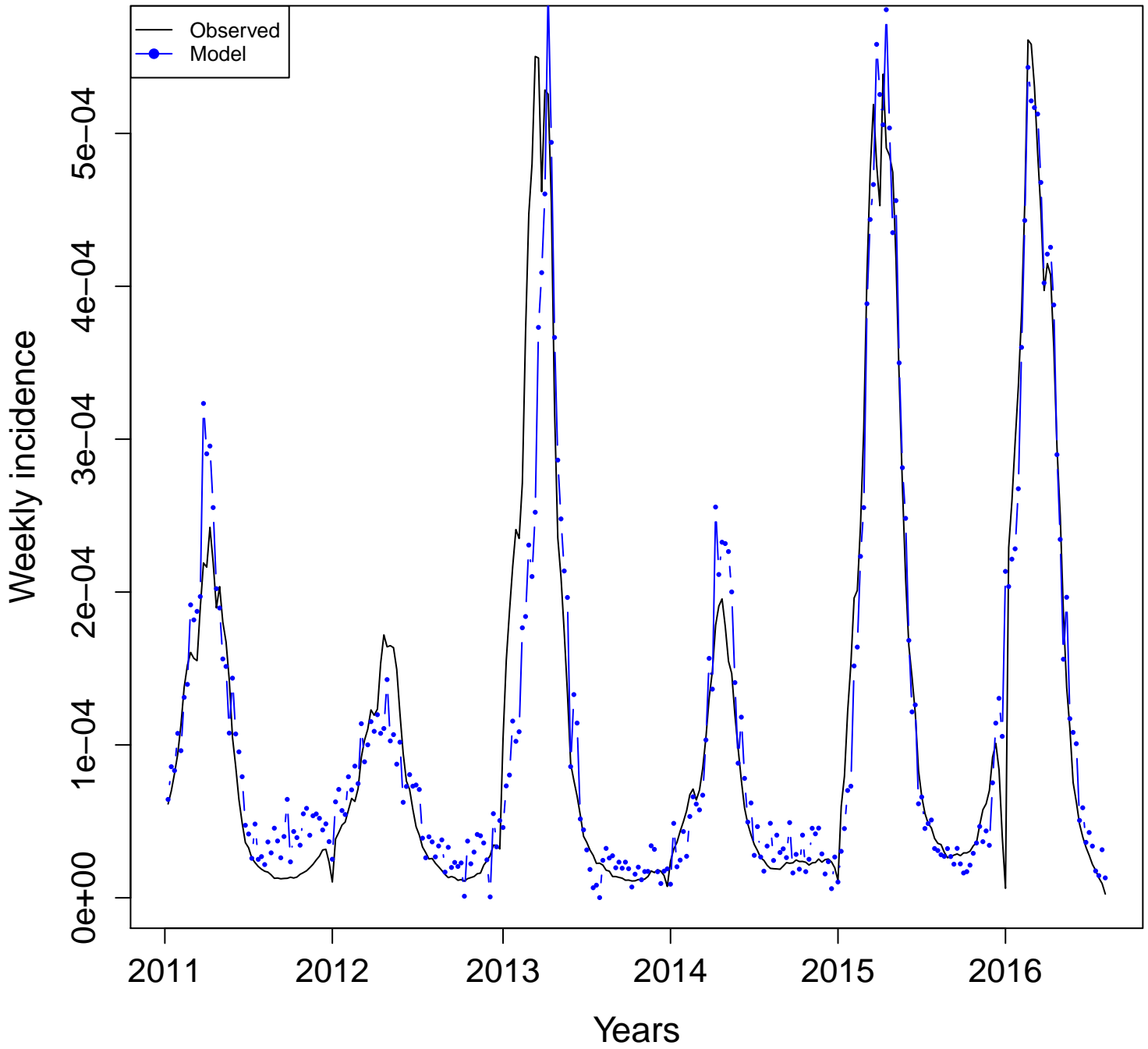
- **Combined terms:**
 - **All:** model with all the available terms. $n =$ number of terms
 - **Four:** model with "dengue", "dengue sintomas", "aedes", and "mosquito".
 - **Uncorrelated:** model with non-correlated terms. $n =$ number of uncorrelated terms
- **Individual terms:** Plots developed with one term at a time.
- Terms for all and uncorrelated models can be found in additional file 3.

Combined terms
Adjusted R squared

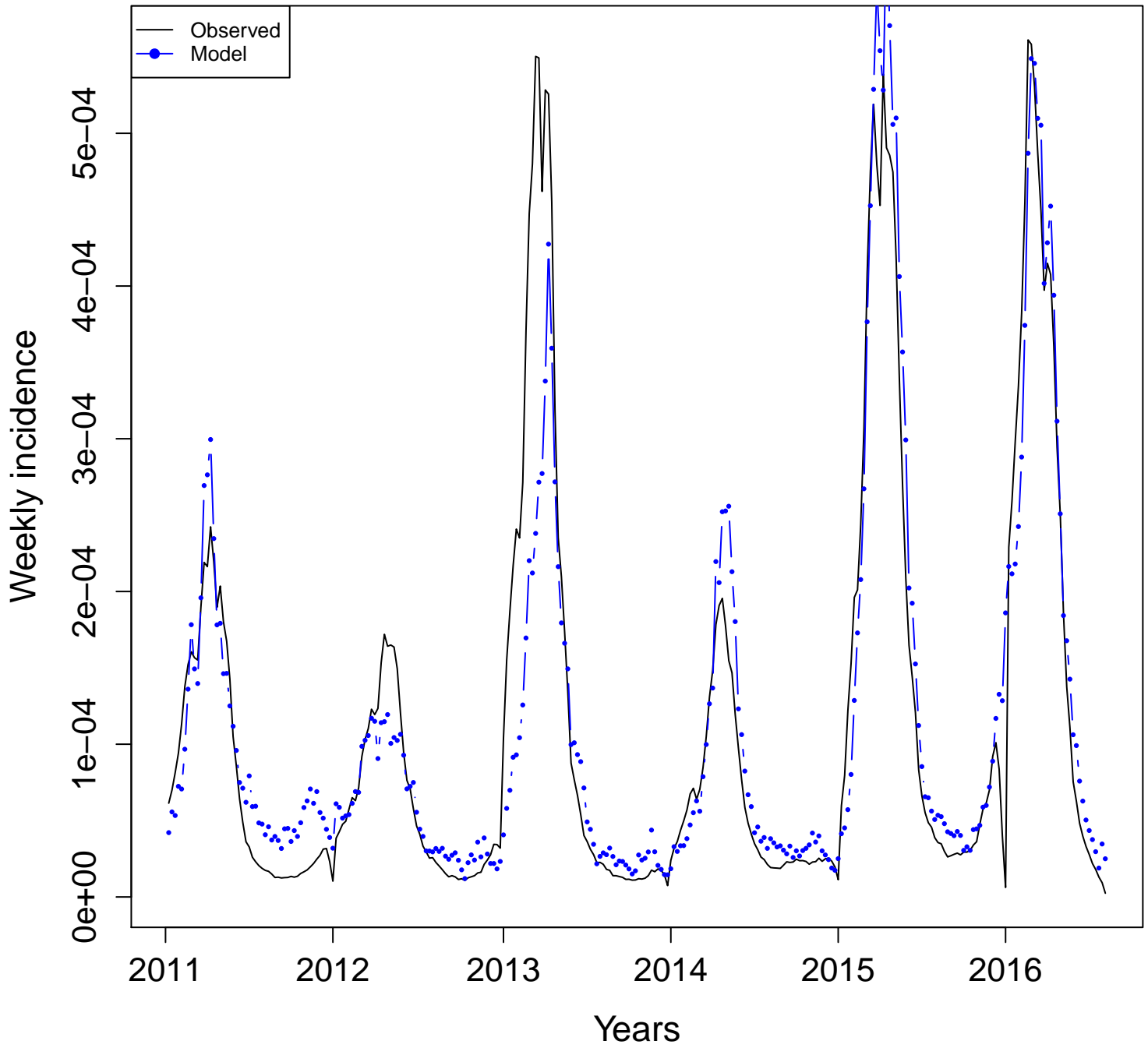
Brazil

All
(n = 14)

BR-BR
Adj. R squared = 0.8887159

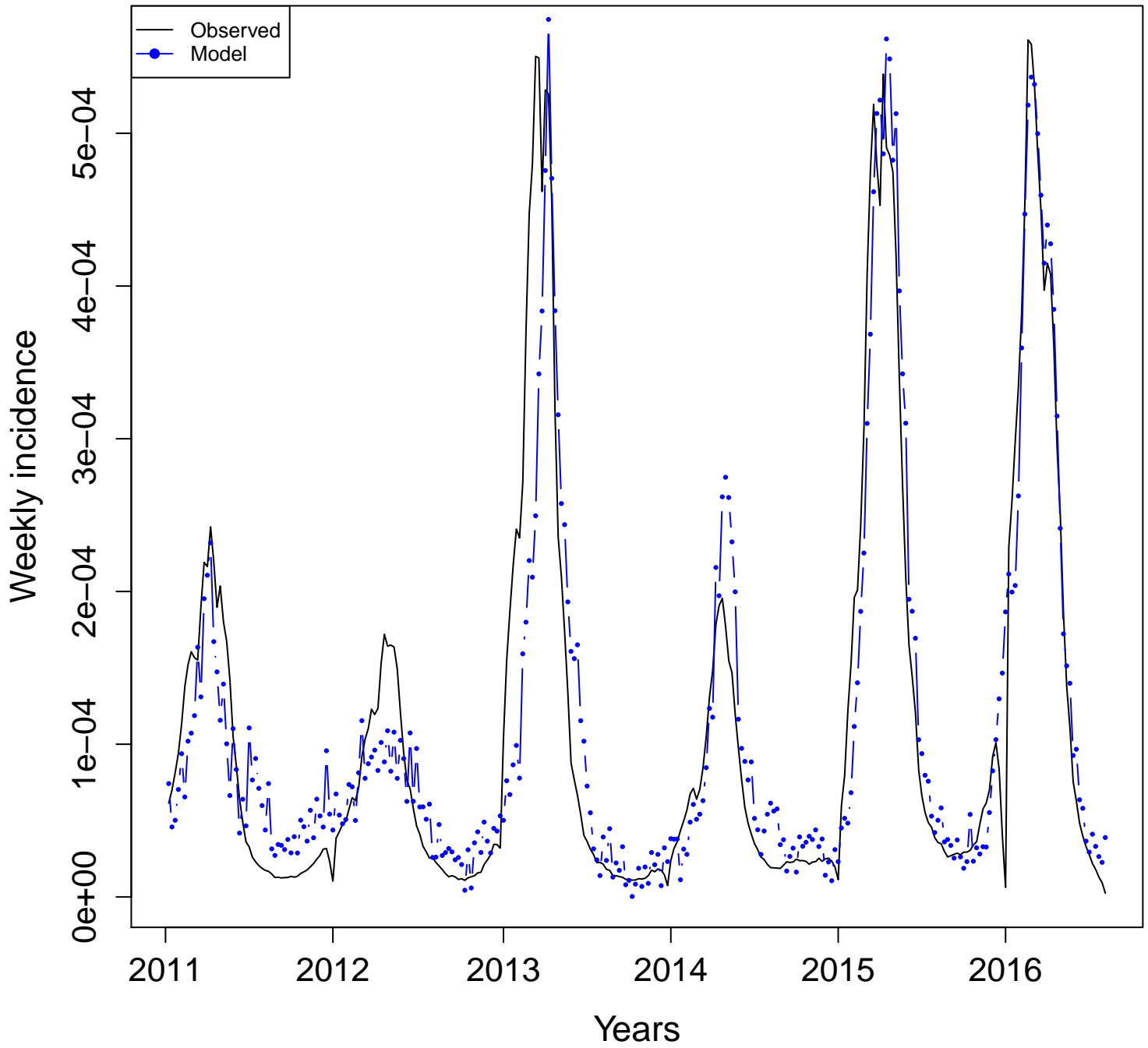


BR
Adj. R squared = 0.8501



**Uncorrelated
(n = 7)**

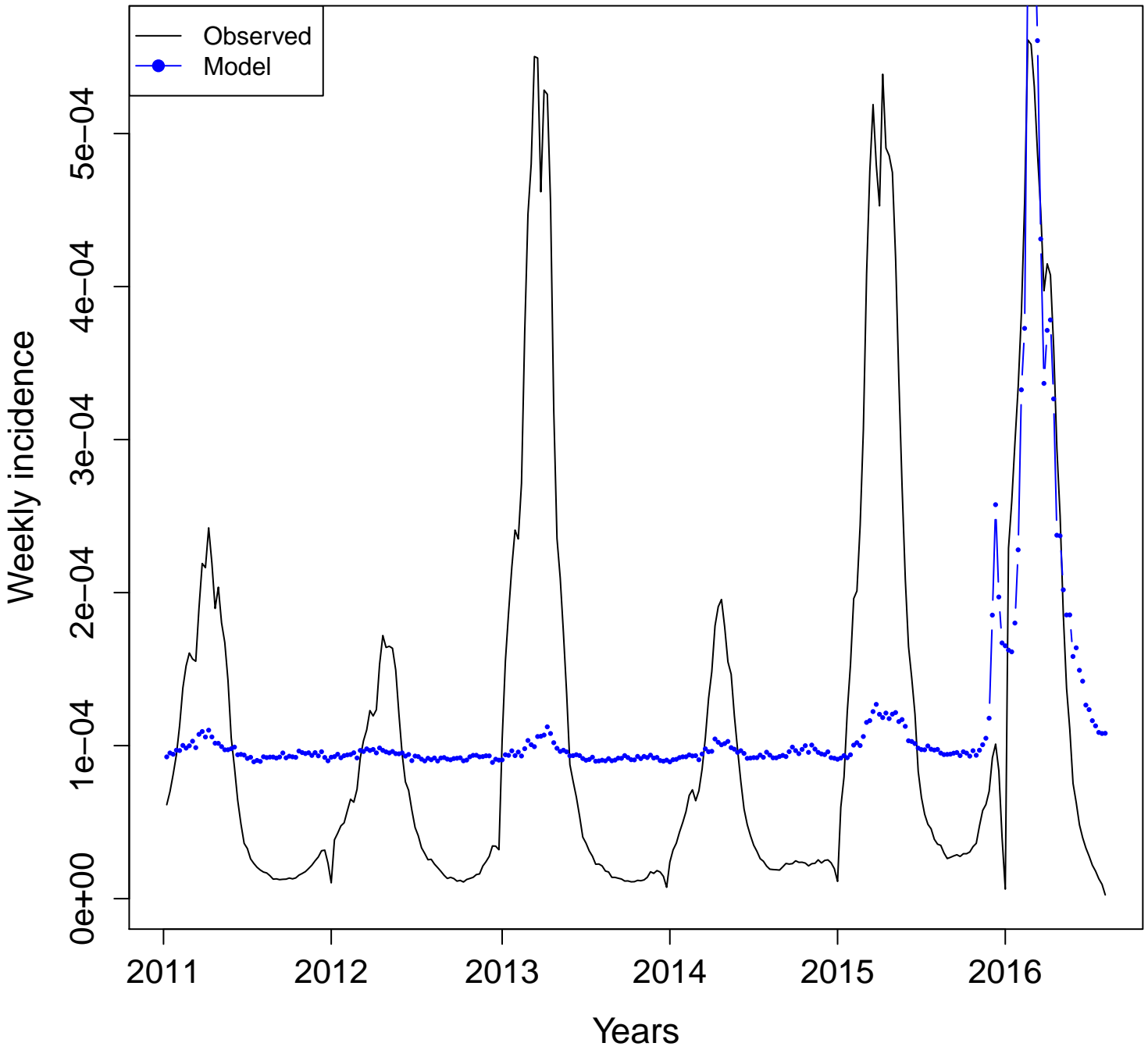
**BR-BR
Adj. R squared = 0.8518958**



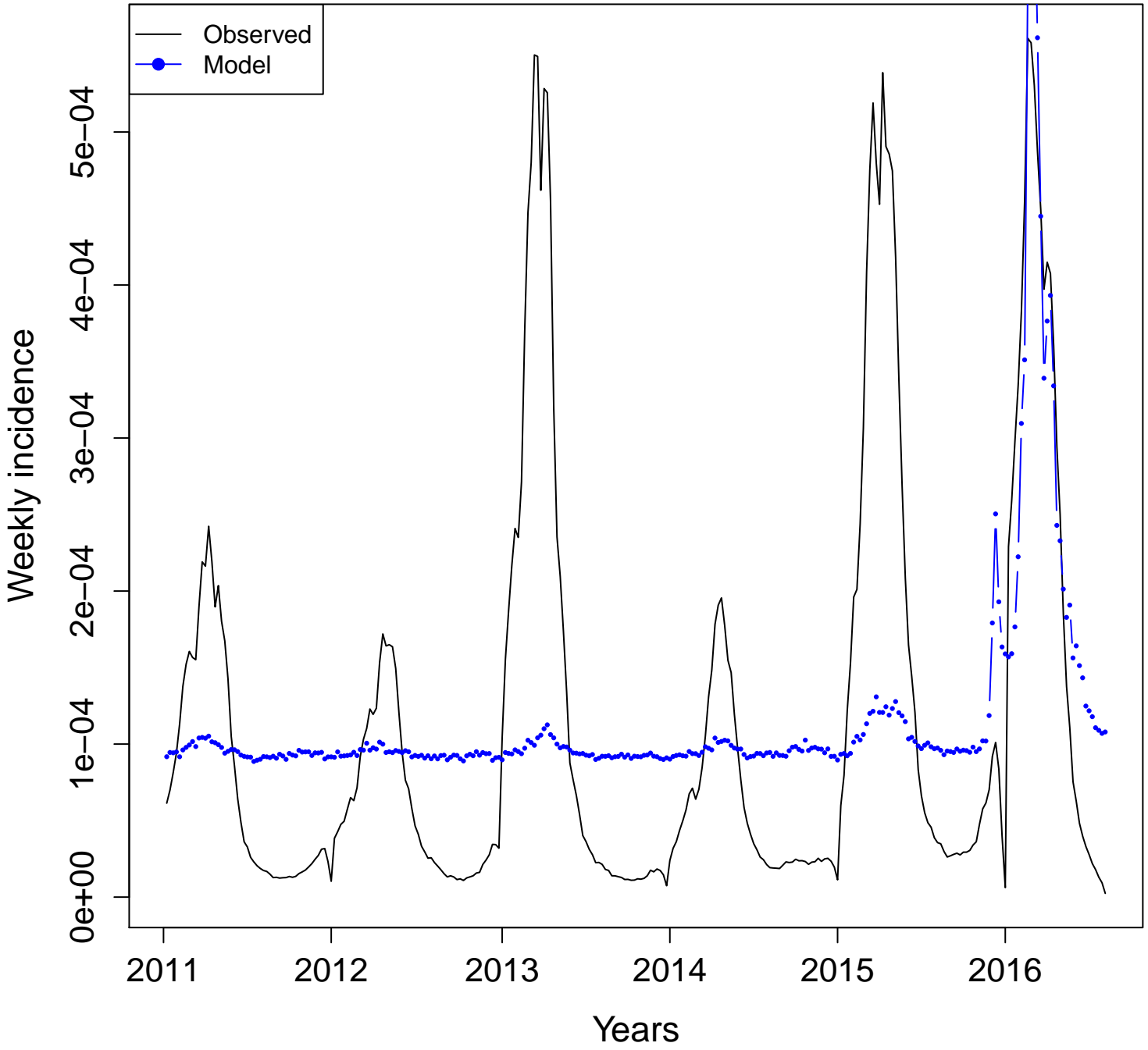
Individual terms
Adjusted R squared

Brazil

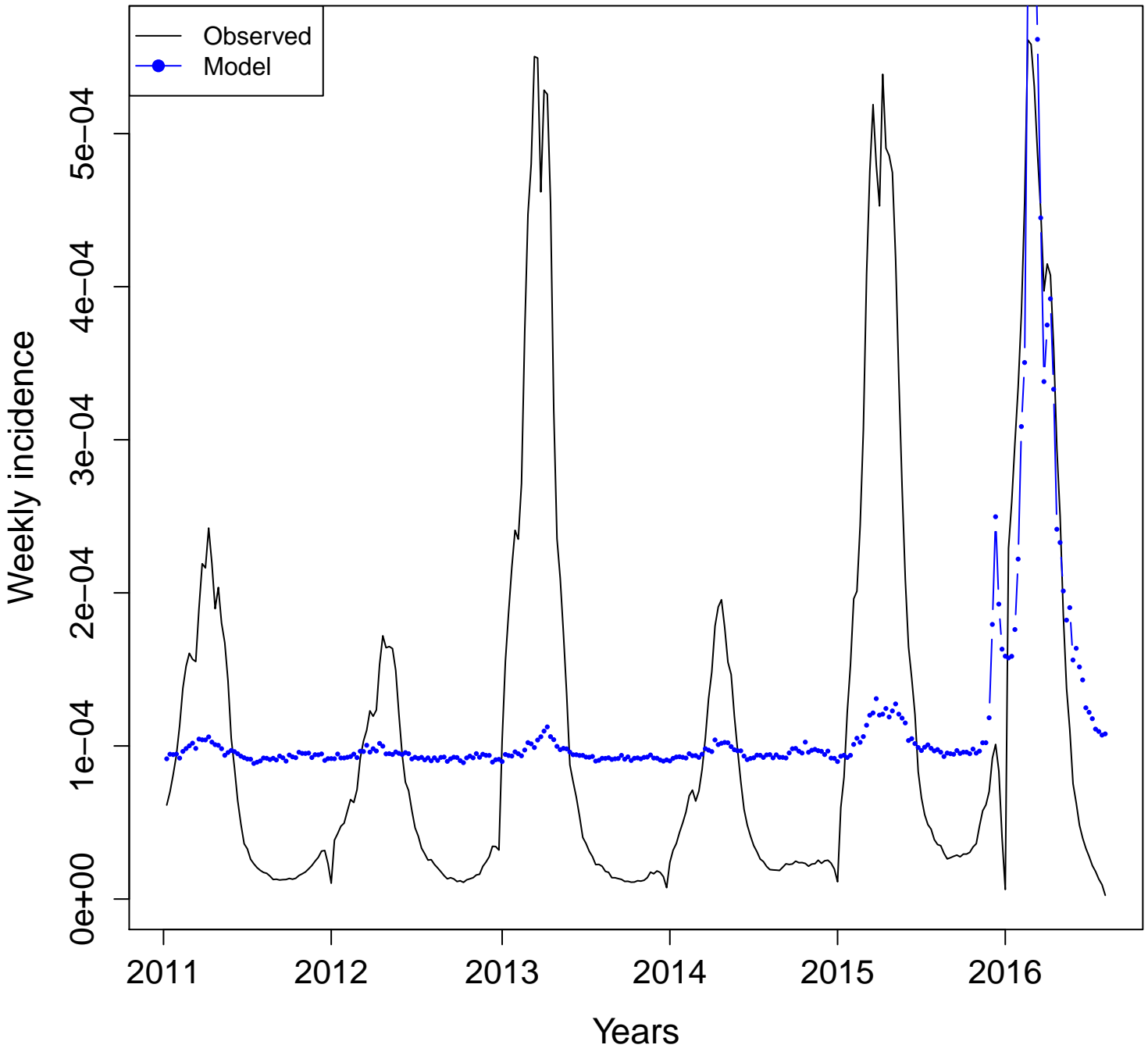
BR- aedes
Adj. R squared = 0.2877



BR- aedes.aegypti
Adj. R squared = 0.289

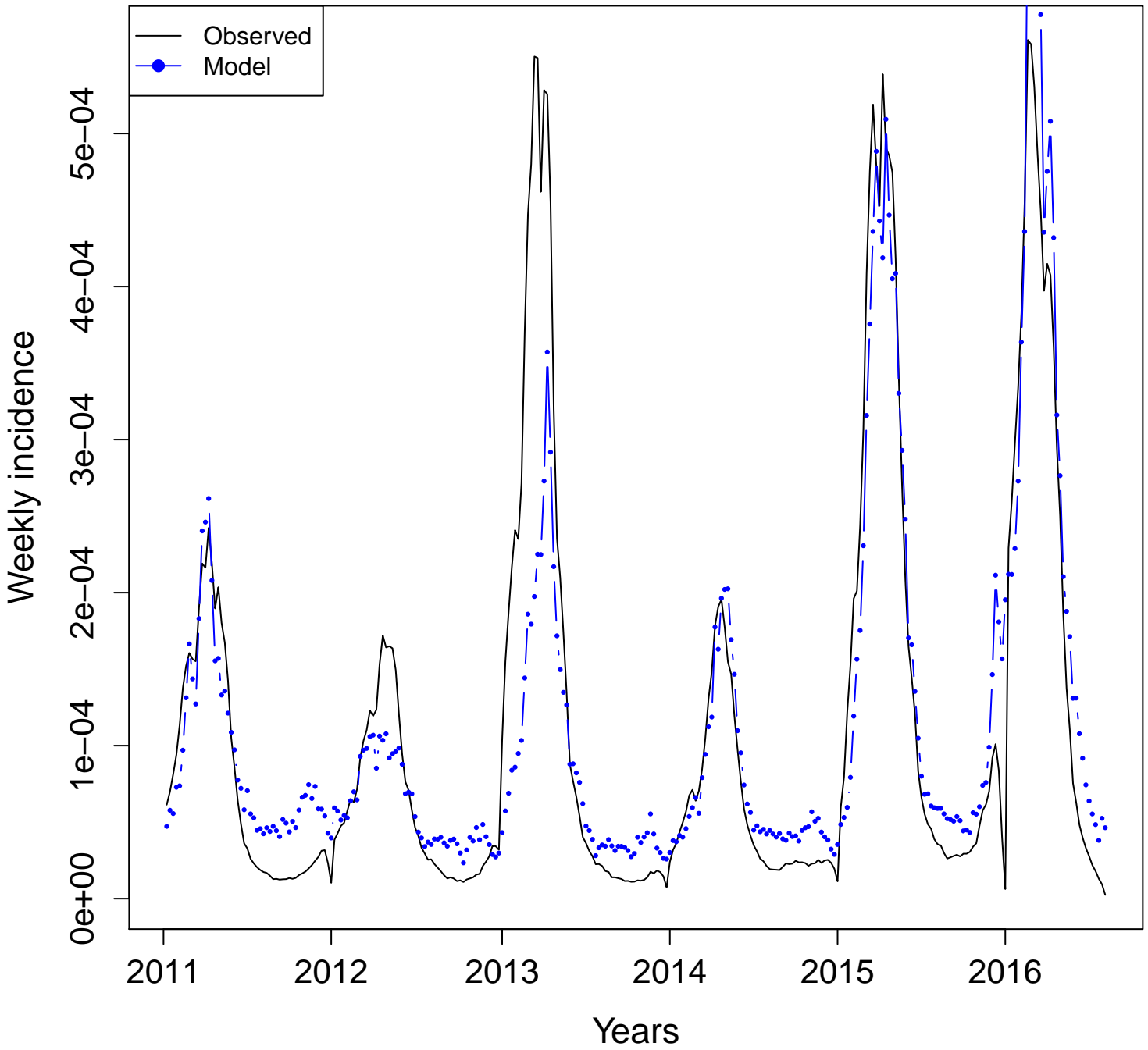


BR- aegypti
Adj. R squared = 0.2887

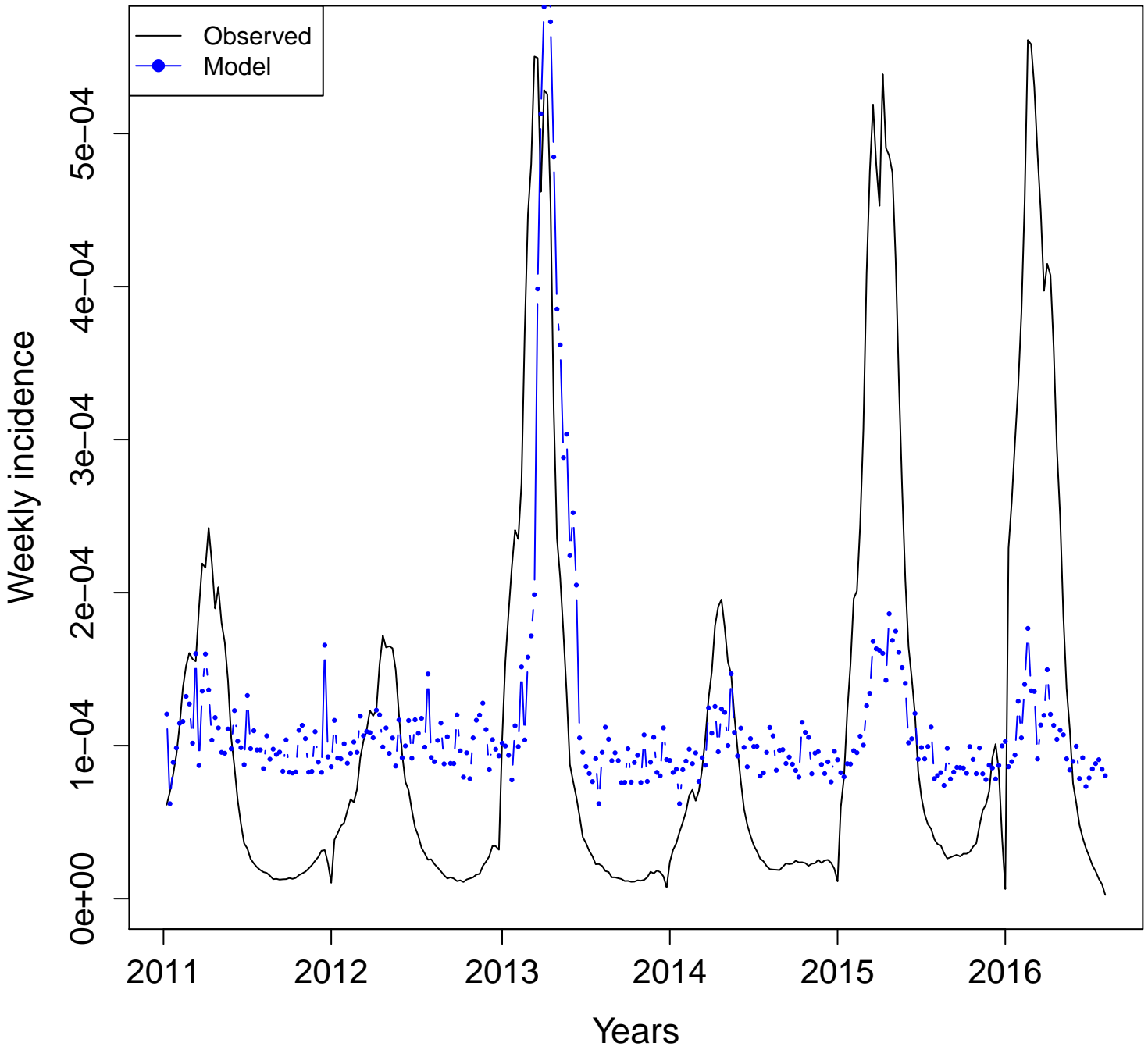


BR- dengue

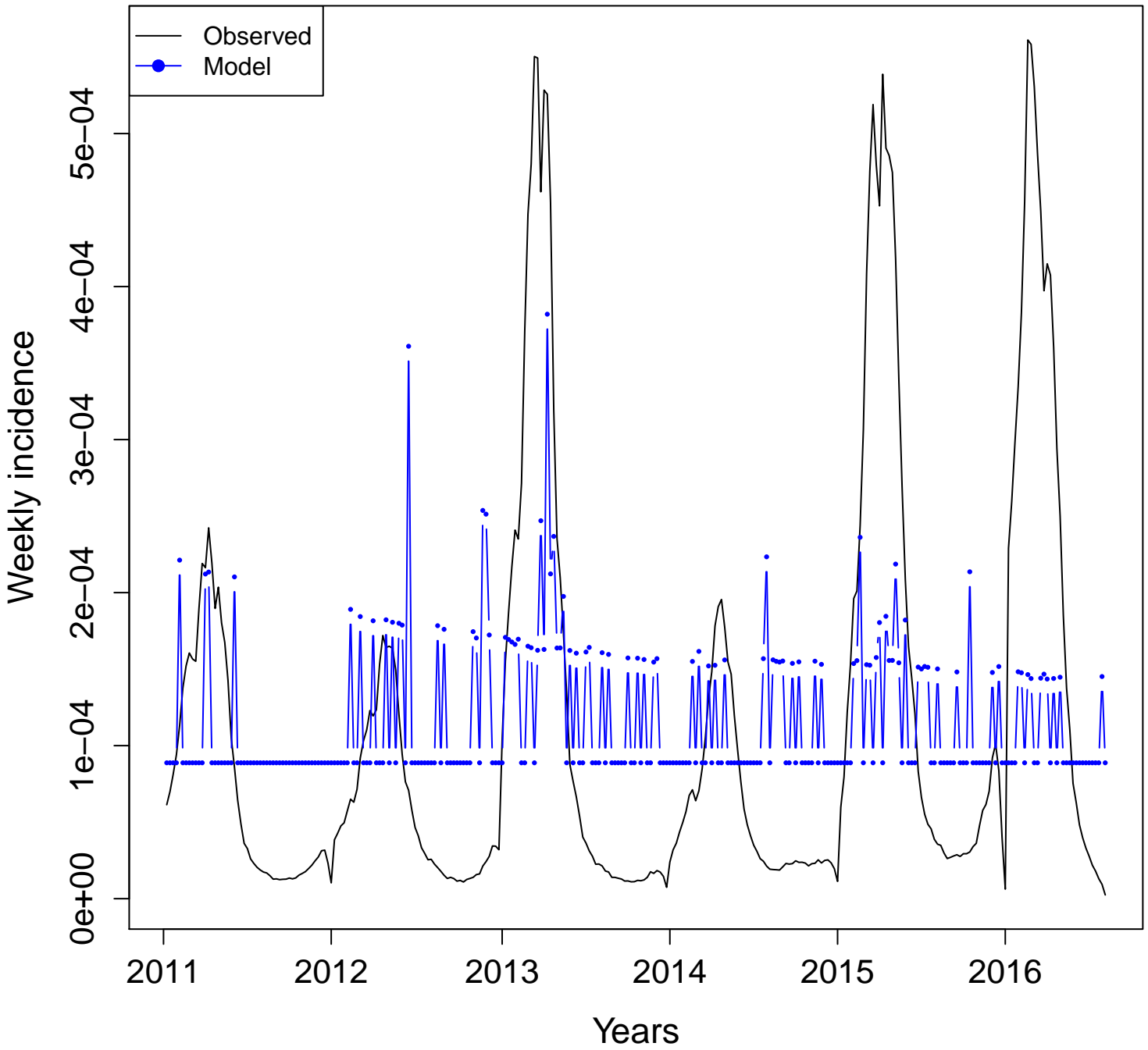
Adj. R squared = 0.7894



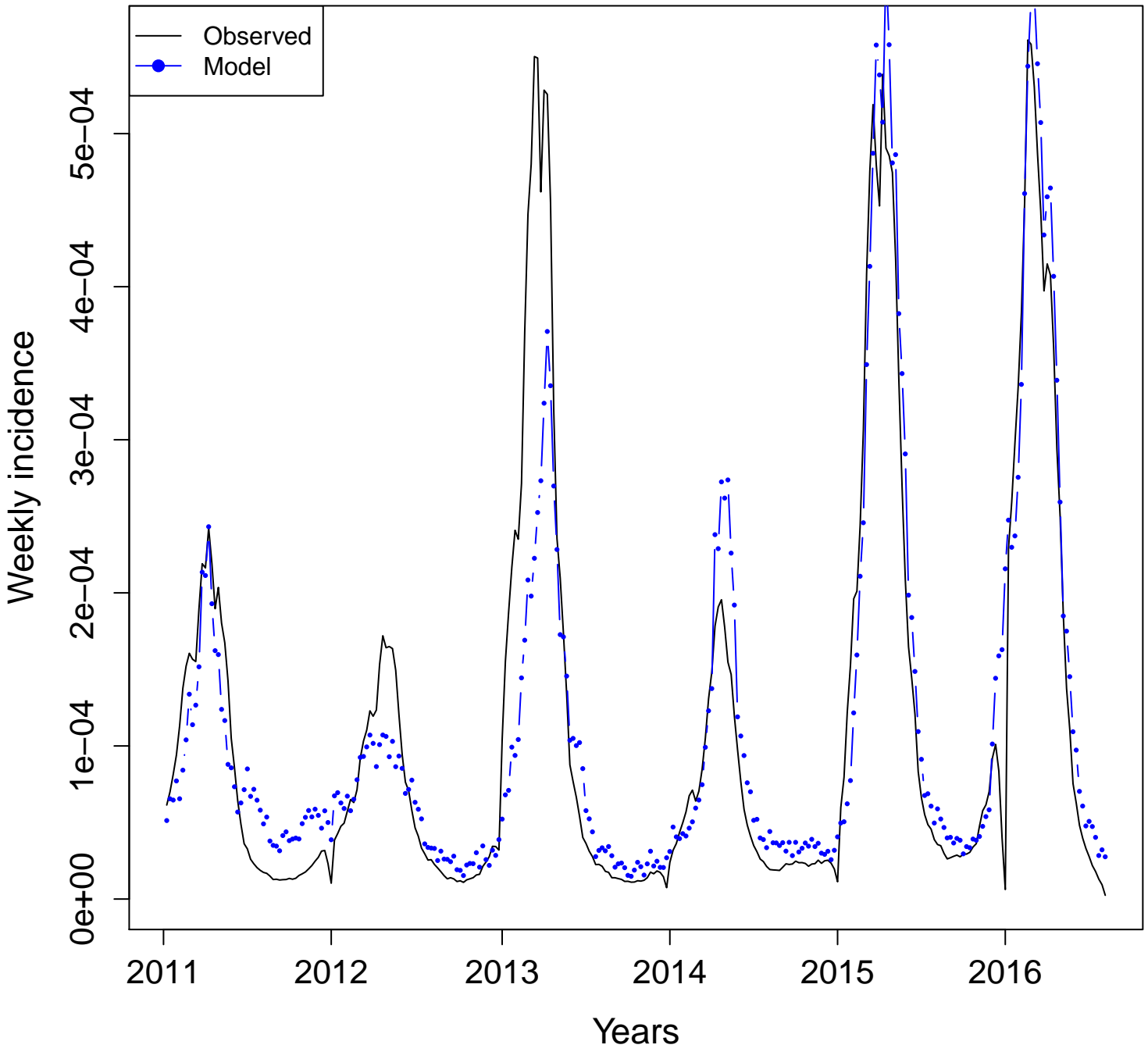
BR- dengue.fever
Adj. R squared = 0.2713



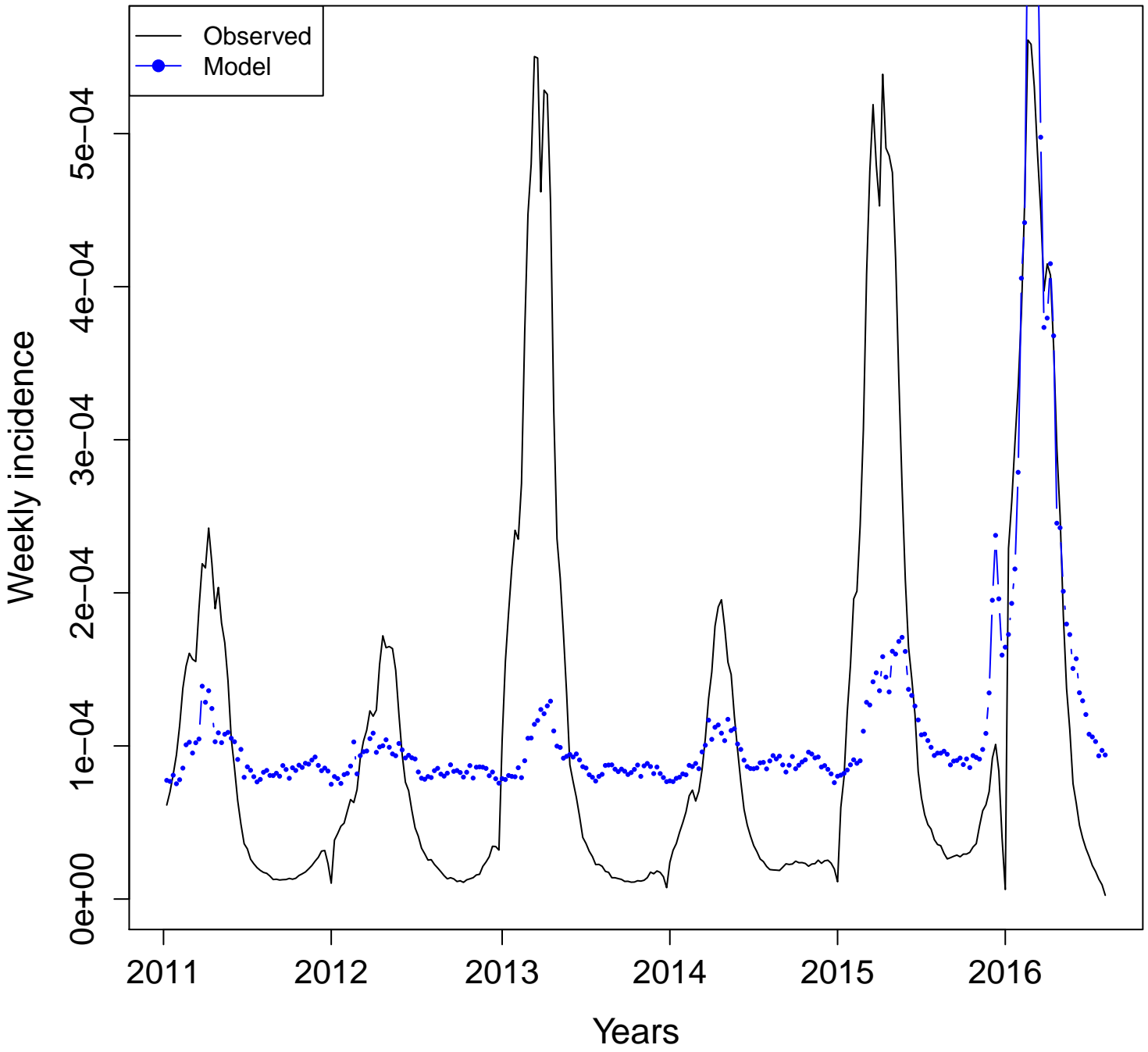
BR- dengue.hemorrhagic.fever
Adj. R squared = 0.1018



BR- dengue.sintomas
Adj. R squared = 0.8379

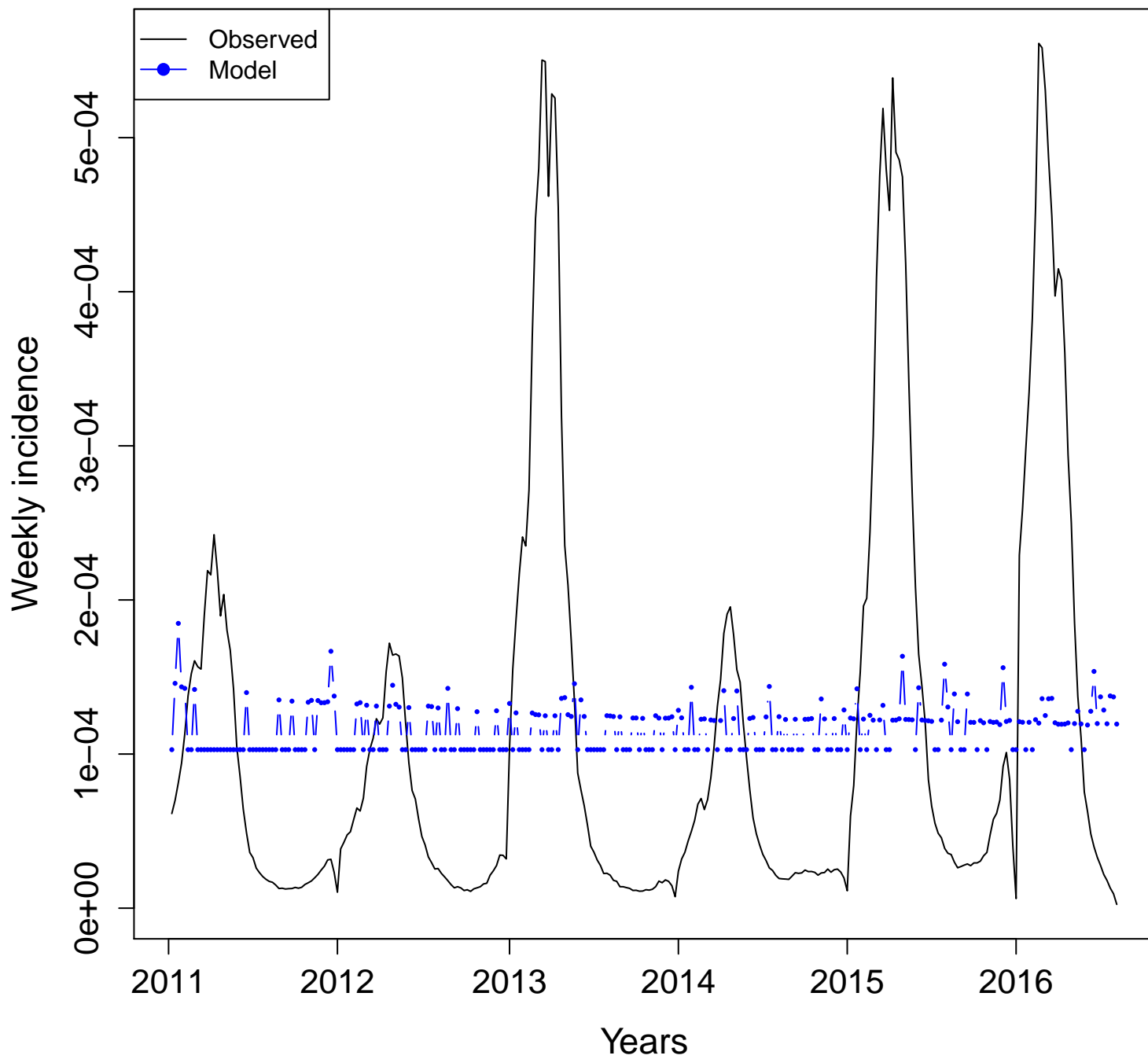


BR- dengue.virus
Adj. R squared = 0.3675



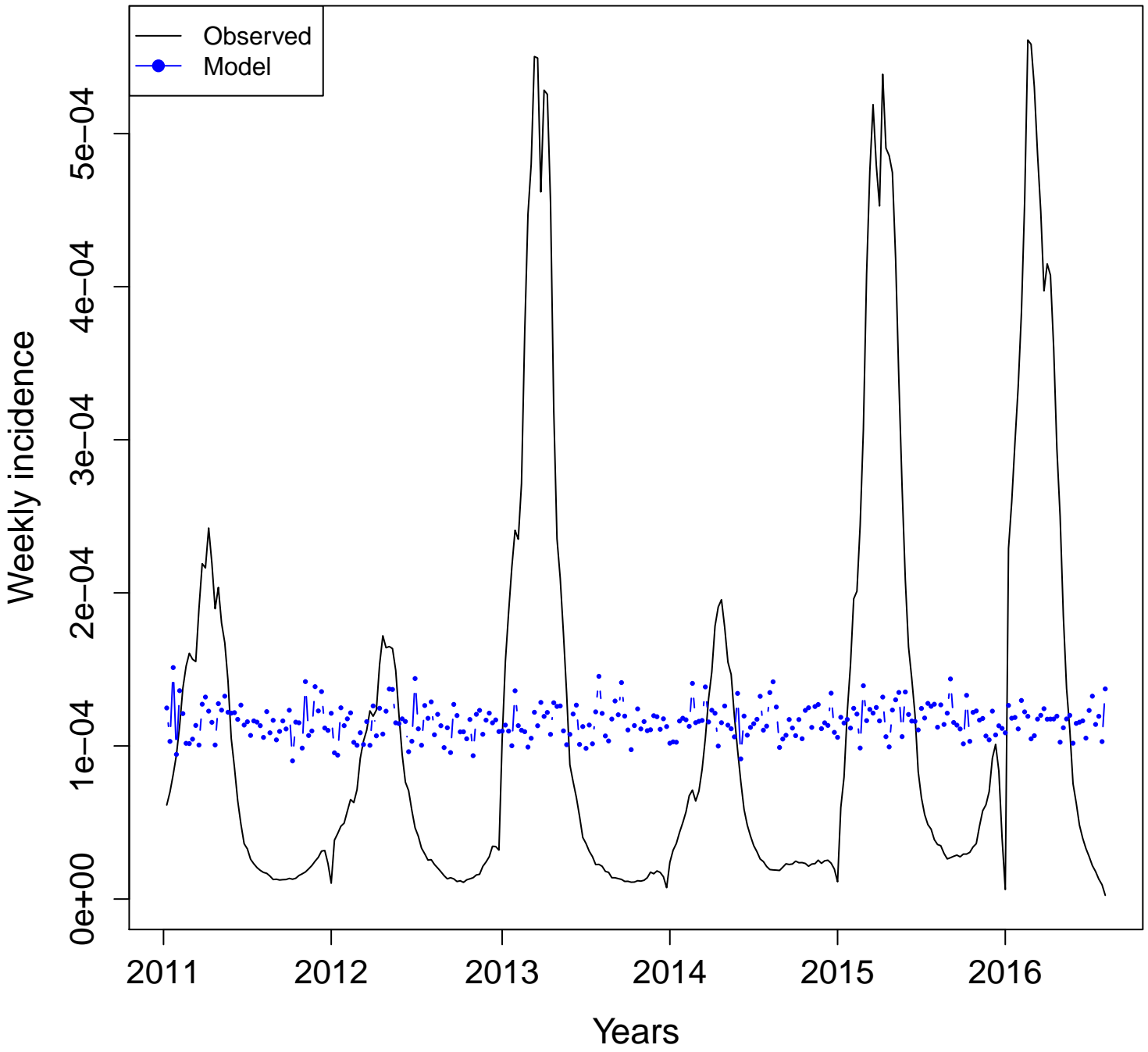
BR- DENV

Adj. R squared = 0.008



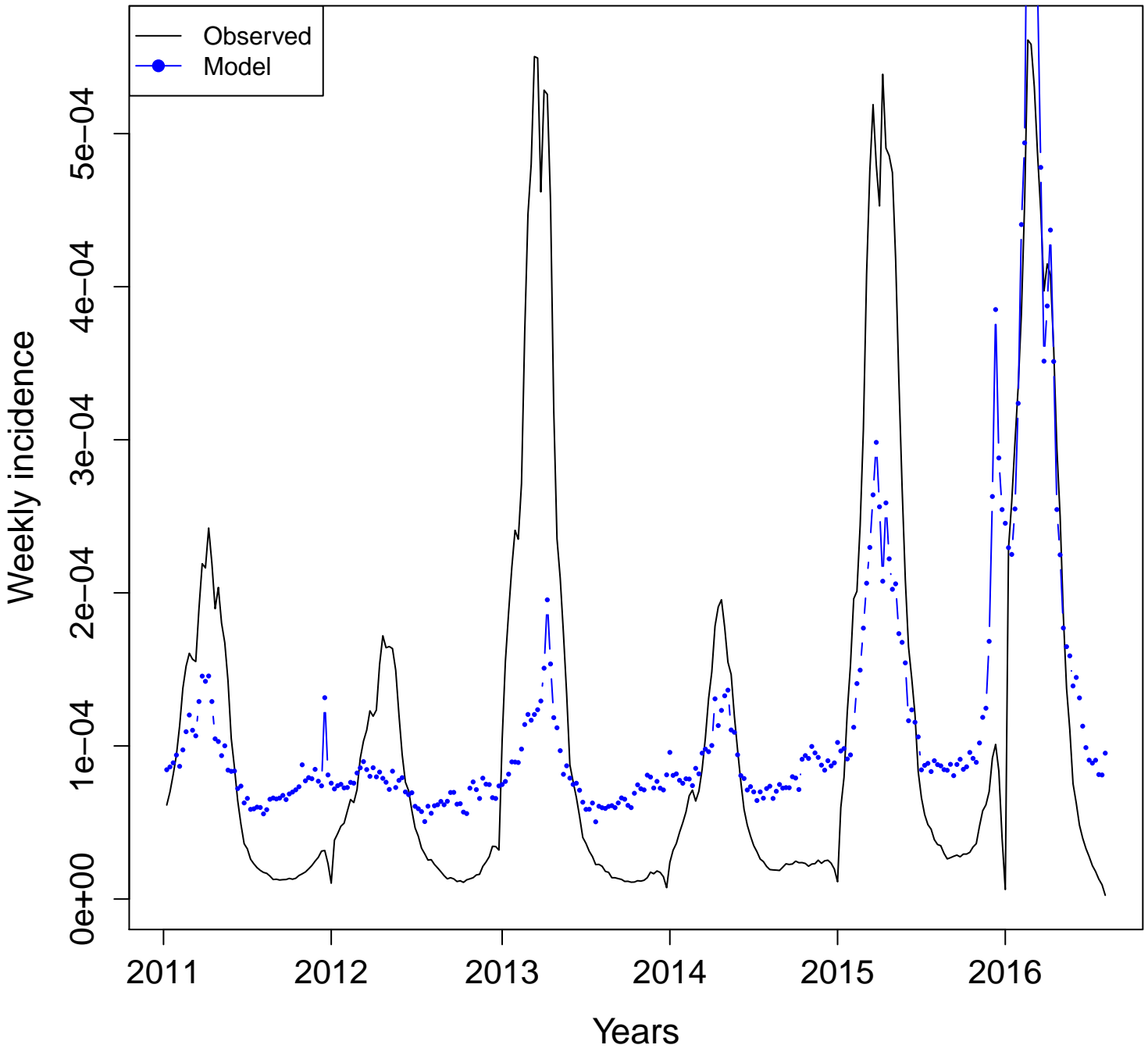
BR- DHF

Adj. R squared = 0.0026

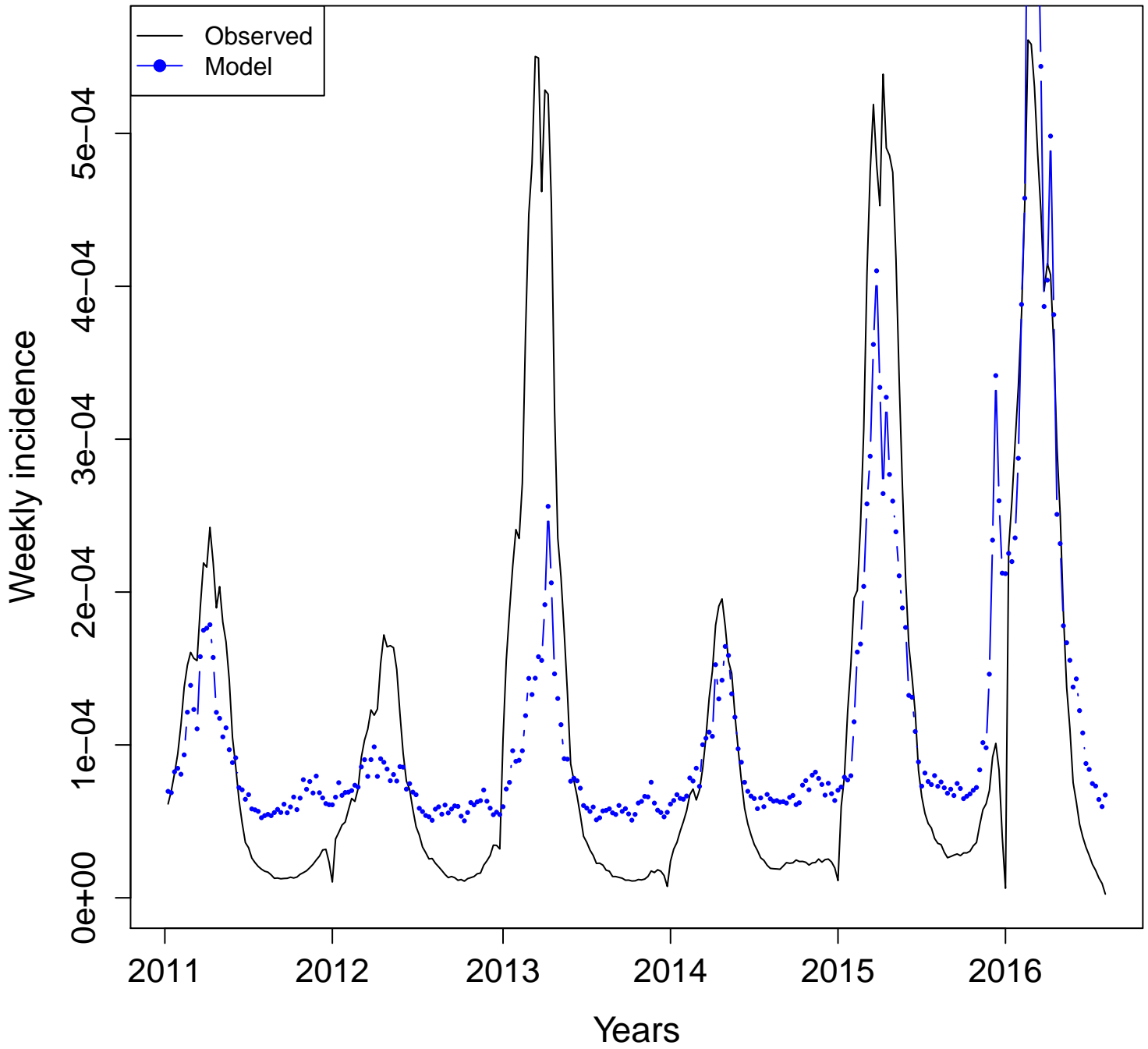


BR- mosquito

Adj. R squared = 0.4876

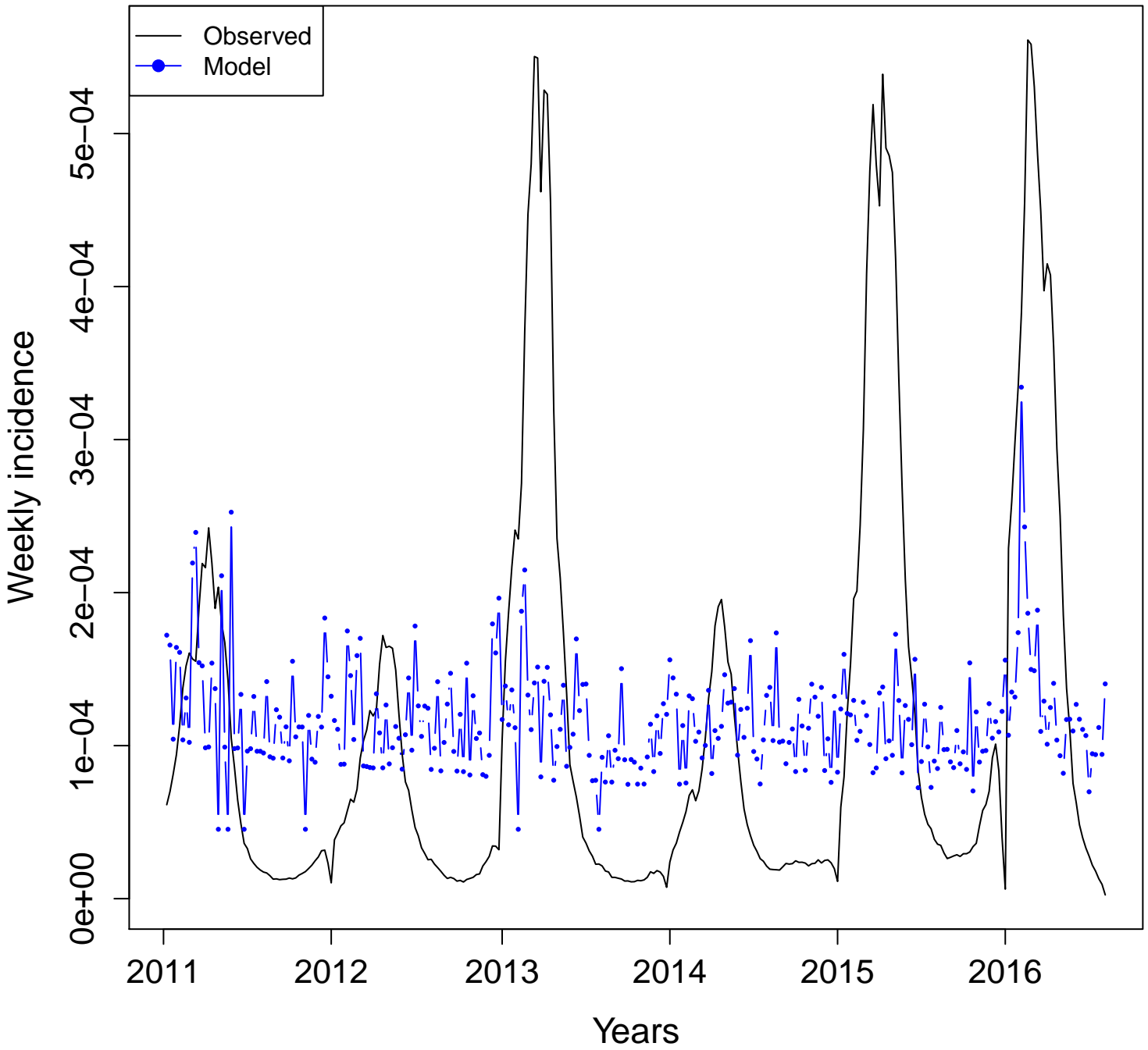


BR- mosquito.dengue
Adj. R squared = 0.6071



BR- mosquitoes

Adj. R squared = 0.0592



BR- sintomas.da.dengue
Adj. R squared = 0.8197

