

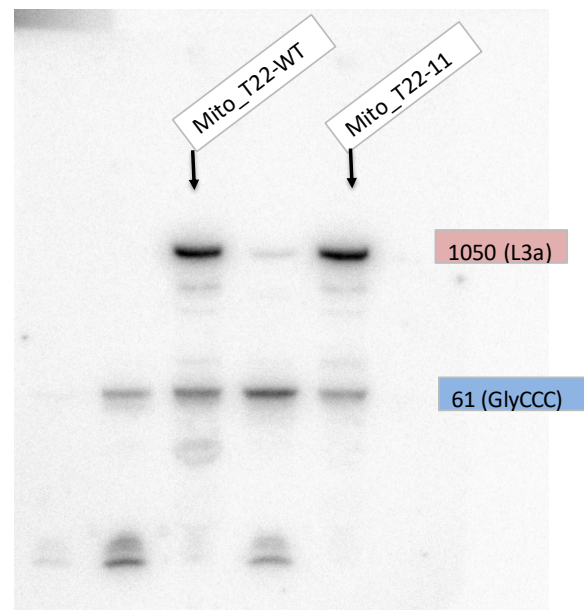
S2 File: Quantitative data supporting Figure 5B.

Probe_61-BI.020911

Bl.2.9.11 sd61+1050

NO.	Index	PSL
MtT22-WT	U1	330,3
MtT22-11	U2	317,58
MtT22-WT	U3	2892,7
MtT22-11	U4	1729,8

	61	1050	sd/1050		Log2	%
MtT22-WT	2892,7	330,3	8,758	1,000	0,000	100,0
MtT22-11	1729,8	317,58	5,447	0,622	-0,685	62,2



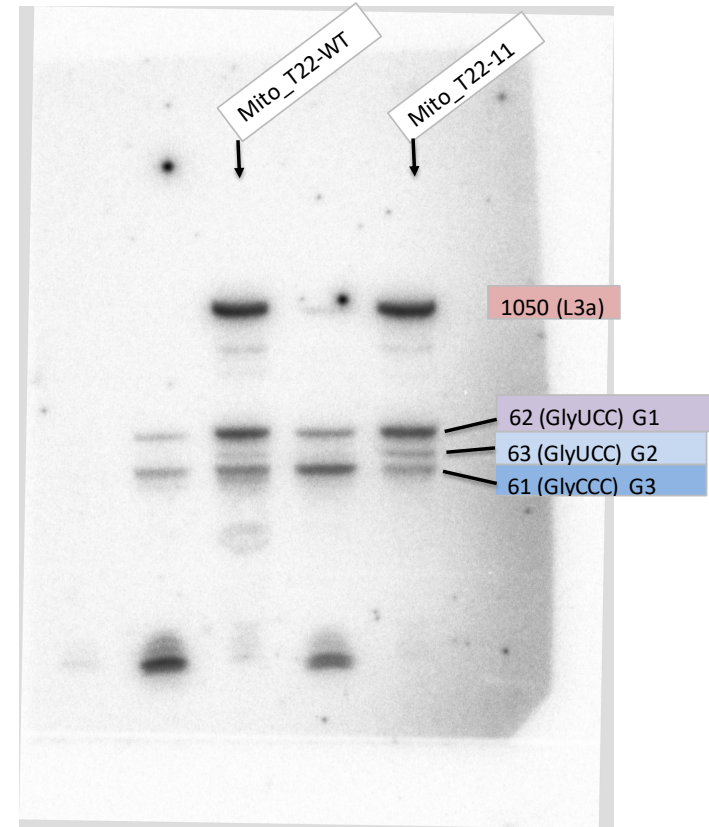
Probe_63-BI.020911

NO.	Index	PSL	
MtT22-WT	U1	1182,3	1050
MtT22-11	U2	1168,4	
MtT22-WT	U3	218,2	63
MtT22-11	U4	286	
MtT22-WT	U5	647,4	62
MtT22-11	U6	660,6	
			61

	63	1050	sd/1050		Log2	%
MtT22-WT	218,2	1182,3	0,185	1,000	0,000	100,0
MtT22-11	286	1168,4	0,245	1,326	0,407	132,6

	62	1050	sd/1050		Log2	%
MtT22-WT	647,4	1182,3	0,548	1,000	0,000	100,0
MtT22-11	660,6	1168,3	0,565	1,033	0,046	103,3

BI.2-09-11_sd63-2.TIFF



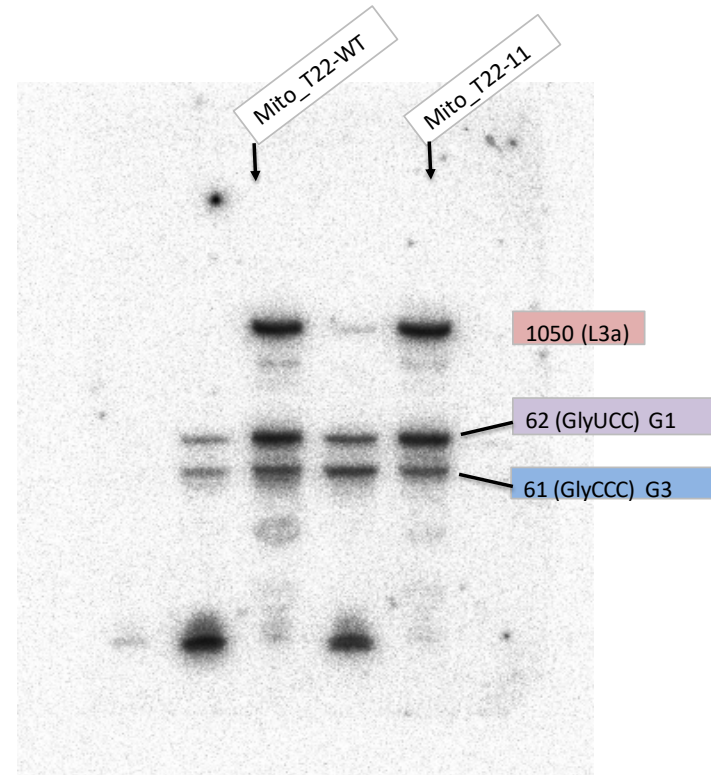
Probe_62-61-BI.020911

NO.	Index	PSL	
MtT22-WT	U1	1738,1	1050
MtT22-11	U2	1762,5	
MtT22-WT	U3	1434,1	62
MtT22-11	U4	1427	
MtT22-WT	U5	729	61
MtT22-11	U6	588	

Bl.2.9.11 sd62-61

	61	1050	sd/1050		Log2	%
MtT22-WT	729	1738,1	0,419	1,000	0,000	100,0
MtT22-11	588	1762,5	0,334	0,795	-0,330	79,5

	62	1050	sd/1050		Log2	%
MtT22-WT	1434,1	1738,1	0,825	1,000	0,000	100,0
MtT22-11	1427	1762,5	0,810	0,981	-0,027	98,1



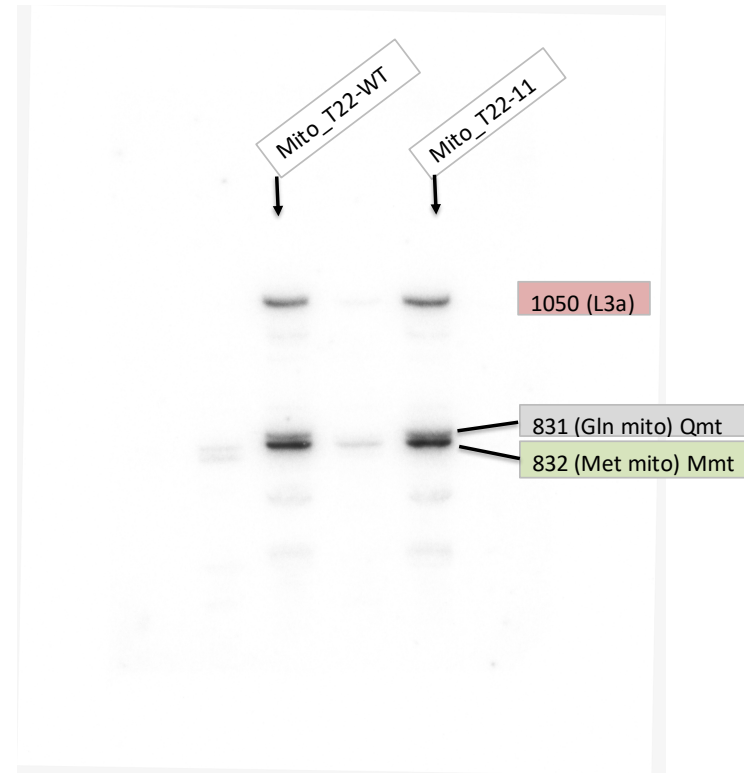
Probe_832-831-BI.020911

NO.	Index	PSL	
MtT22-WT	U1	1622,2	1050
MtT22-11	U2	1830,4	
MtT22-WT	U3	3602,6	831
MtT22-11	U4	3883	
MtT22-WT	U5	1788	832
MtT22-11	U6	2045,2	

Bl.2.9.11sd-831-832

	831	1050	sd/1050		Log2	%
MtT22-WT	3602,6	1622,2	2,221	1,000	0,000	100,0
MtT22-11	3883	1830,4	2,121	0,955	-0,066	95,5

	832	1050	sd/1050		Log2	%
MtT22-WT	1788	1622,2	1,102	1,000	0,000	100,0
MtT22-11	2045,2	1830,4	1,117	1,014	0,020	101,4

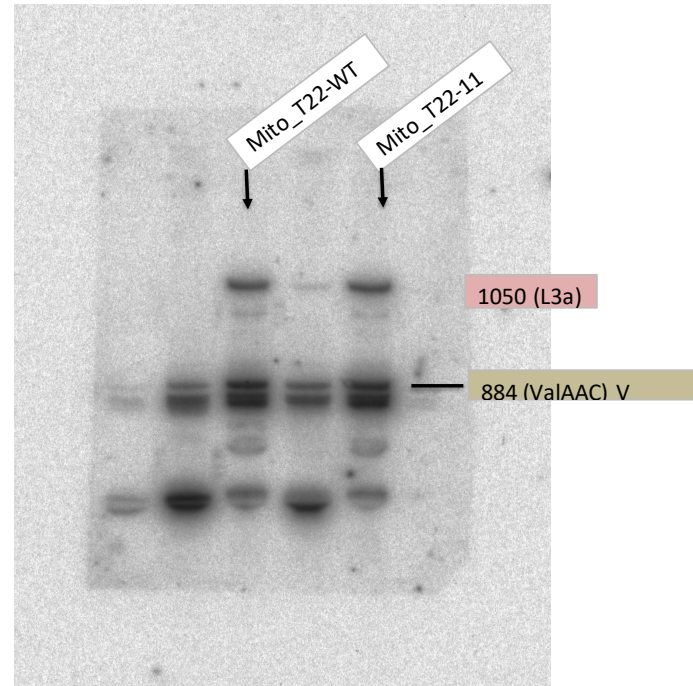


Probe_884-BI.020911

NO.	Index	PSL	
MtT22-WT	U1	1484	1050
MtT22-11	U2	1605	
MtT22-WT	U3	13522,7	884
MtT22-11	U4	13495,5	

BI.2-09-11_sd884

	884 (2)	1050	sd/1050		Log2	%
MtT22-WT	13522,7	1484	9,112	1,000	0,000	100,0
MtT22-11	13495,5	1605	8,408	0,923	-0,116	92,3

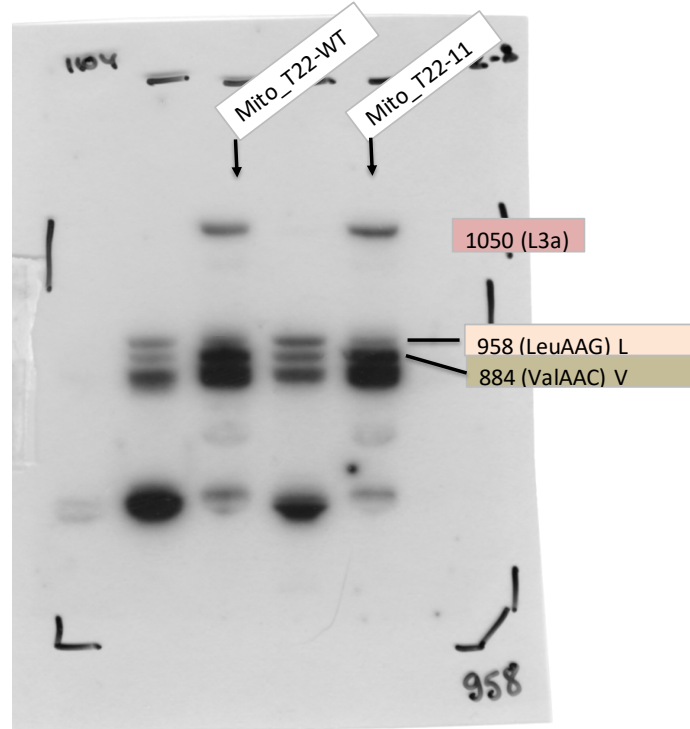


Probe_958-BI.020911

NO.	Index	PSL	
MtT22-WT	U1	393,28	1050
MtT22-11	U2	424,94	
MtT22-WT	U3	373,47	958
MtT22-11	U4	308,63	

	958	1050	sd/1050		Log2	%
MtT22-WT	373,47	393,28	0,950	1,000	0,000	100,0
MtT22-11	308,63	424,94	0,726	0,765	-0,387	76,5

phosphoimager with probe 958 LeuAAG not found and the scan is provided



Results-BI.020911

MtT22-11	61	63	832-831	62-61	884	958	AV	SD
61	62,2							62,2
62		103,3		98,1				100,7
63		132,6						132,6
884					92,3			92,3
958						76,5		76,5
832			101,4					101,4
831			95,5					95,5

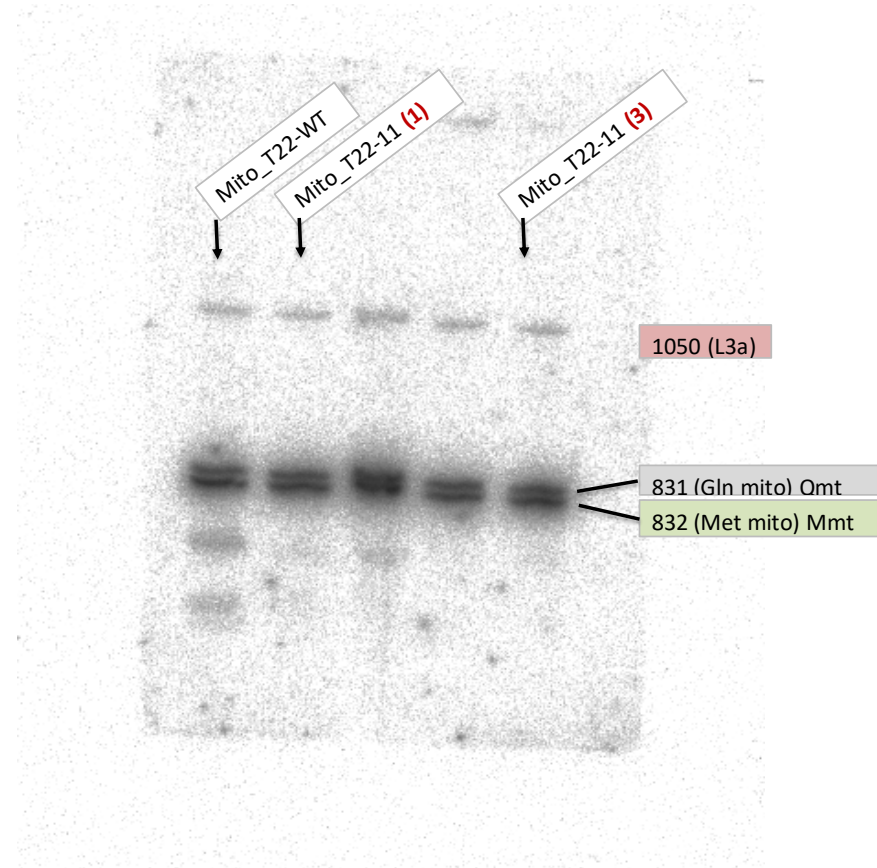
Probe_831-832-BI.080911

NO.	Index	PSL	
MtT22-WT	U1	57,4	1050
MtT22-11-1	U2	50,6	
MtT22-11-3	U4	61,8	
MtT22-WT	U5	1483,2	832
MtT22-11-1	U6	1634,7	
MtT22-11-3	U8	1837,5	
MtT22-WT	U9	2635,2	831
MtT22-11-1	U10	2498,4	
MtT22-11-3	U12	2419,6	

Bl.8.9.11sd831-2

	832	1050	sd/1050		Log2	%
MtT22-WT	1483,2	57,4	25,840	1,000	0,000	100,0
MtT22-11-1	1634,7	50,6	32,306	1,250	0,322	125,0
MtT22-11-3	1837,5	61,8	29,733	1,151	0,202	115,1

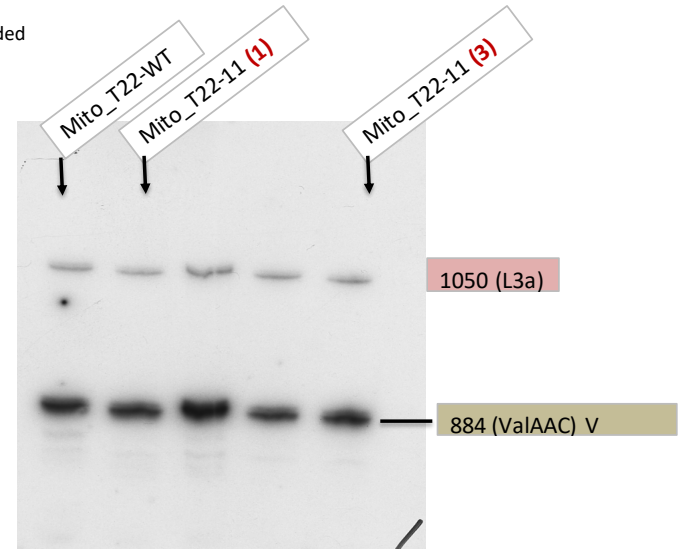
	831	1050	sd/1050		Log2	%
MtT22-WT	2635,2	57,4	45,909	1,000	0,000	100,0
MtT22-11-1	2498,4	50,6	49,375	1,075	0,105	107,5
MtT22-11-3	2419,6	61,8	39,152	0,853	-0,230	85,3



Probe_884-BI.080911

NO.	Index	PSL	
MtT22-WT	U1	222,36	1150
MtT22-11-1	U2	177,68	
MtT22-11-3	U4	224,11	
MtT22-WT	U5	2000,7	884
MtT22-11-1	U6	1848,04	
MtT22-11-3	U8	1871,8	

phosphoimager not found and the scan is provided



	884	1050	sd/1050		Log2	%
MtT22-WT	2000,7	222,36	8,998	1,000	0,000	100,0
MtT22-11-1	1848,04	177,68	10,401	1,156	0,209	115,6
MtT22-11-3	1871,8	224,11	8,352	0,928	-0,107	92,8

Probe_958-BI.080911

NO.	Index	PSL	
MtT22-WT	U1	234,32	1150
MtT22-11-1	U2	194,37	
MtT22-11-3	U4	227,95	
MtT22-WT	U5	126,9	958
MtT22-11-1	U6	100,47	
MtT22-11-3	U8	95,69	

	958	1050	sd/1050		Log2	%
MtT22-WT	126,9	234,32	0,542	1,000	0,000	100,0
MtT22-11-1	100,47	194,37	0,517	0,954	-0,067	95,4
MtT22-11-3	95,69	227,95	0,420	0,775	-0,367	77,5

Results-BI.080911

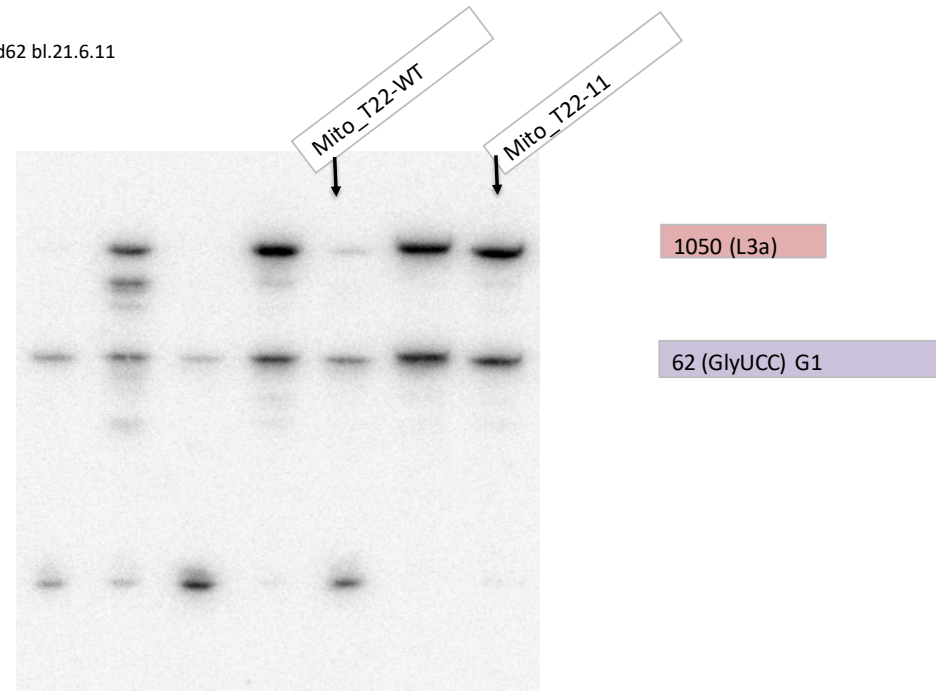
MtT22-11	series_1	series_3		AV	SD
831	107,5	85,3		96,4	15,7
832	125,0	115,1		120,0	7,0
884	115,6	71,5		93,6	31,2
958	95,4	70,5		83,0	17,6

Probe_62-BI.210611

NO.	Index	PSL
MtT22-WT	U2	4647,37
MtT22-11	U3	5698,78
MtT22-WT	U8	9442,08
MtT22-11	U9	8848,49

	62	1050	sd/1050		Log2	%
MtT22-WT	4647,37	9442,08	0,492	1,000	0,000	100,0
MtT22-11	5698,78	8848,49	0,644	1,308	0,388	130,8

sd62 bl.21.6.11



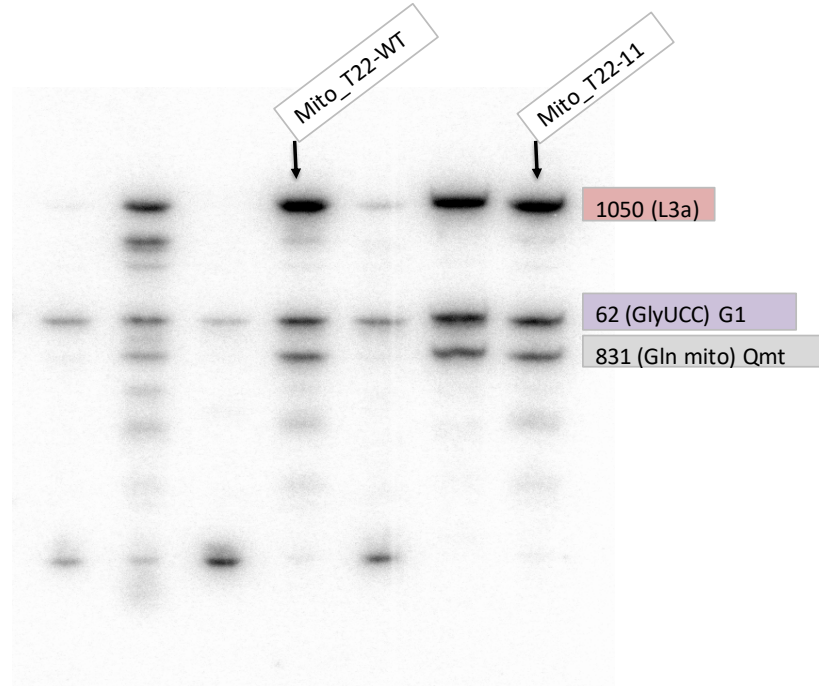
Probe_831-BI.210611

NO.	Index	PSL
MtT22-WT	U2	1534,54
MtT22-11	U3	1742,81
MtT22-WT	U8	6539,88
MtT22-11	U9	6395,12
MtT22-WT	U14	2224,02
MtT22-11	U15	2752,26

sd831 bl.21.6.11

	62	1050	sd/1050		Log2	%
MtT22-WT	2224,02	6539,88	0,340	1,000	0,000	100,0
MtT22-11	2752,26	6395,12	0,430	1,266	0,340	126,6

	831	1050	sd/1050		Log2	%
MtT22-WT	1534,54	6539,88	0,235	1,000	0,000	100,0
MtT22-11	1742,81	6395,12	0,273	1,161	0,216	116,1

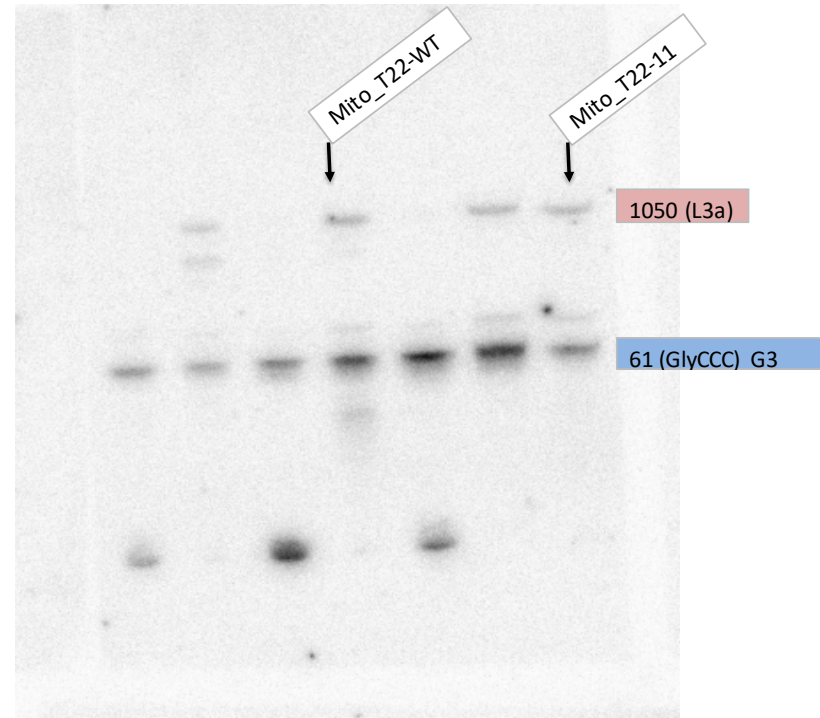


Probe_61-BI.210611

NO.	Index	PSL
MtT22-WT	U1	445,4
MtT22-11	U2	376
MtT22-WT	U3	1853,5
MtT22-11	U4	1125

Bl. 21.6.11 sd61

	61	1050	sd/1050		Log2	%
MtT22-WT	1853,5	445,4	4,161	1,000	0,000	100,0
MtT22-11	1125	376	2,992	0,719	-0,476	71,9



Probe_63-BI.210611

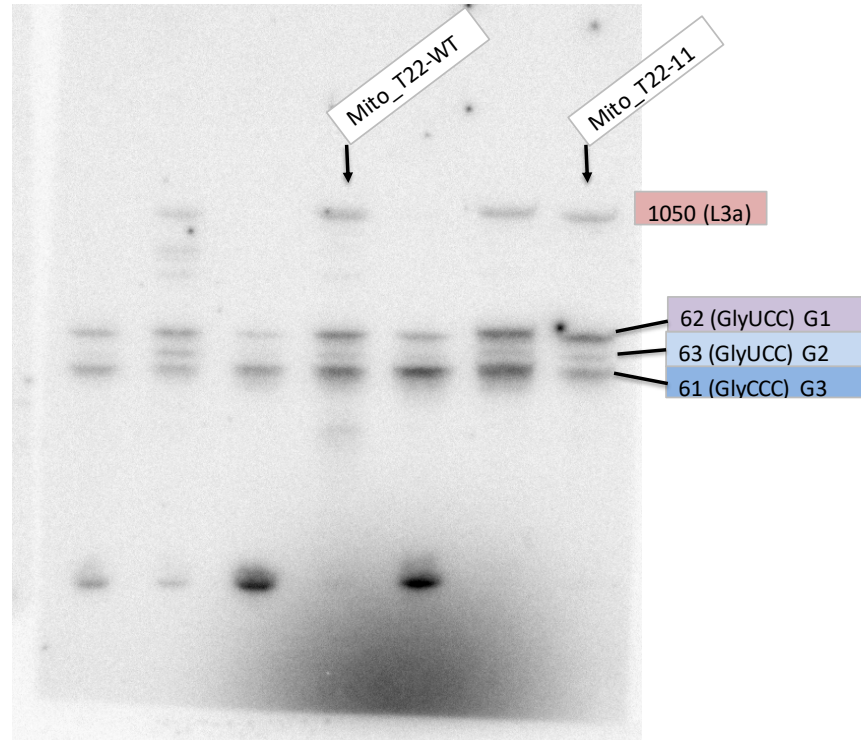
NO.	Index	PSL	
MtT22-WT	U1	420,5	1050
MtT22-11	U2	356,6	
MtT22-WT	U3	432,2	63
MtT22-11	U4	424,1	
MtT22-WT	U5	864,5	62?
MtT22-11	U6	1107,8	
MtT22-WT	U7	1230	61
MtT22-11	U8	730,5	

Bl.21.6.11 sd63

	63	1050	sd/1050		Log2	%
MtT22-WT	432,2	420,5	1,028	1,000	0,000	100,0
MtT22-11	424,1	356,6	1,189	1,157	0,211	115,7

	62	1050	sd/1050		Log2	%
MtT22-WT	864,5	420,5	2,056	1,000	0,000	100,0
MtT22-11	1107,8	356,6	3,107	1,511	0,596	151,1

	61	1050	sd/1050		Log2	%
MtT22-WT	1230	420,5	2,925	1,000	0,000	100,0
MtT22-11	730,5	356,6	2,049	0,700	-0,514	70,0

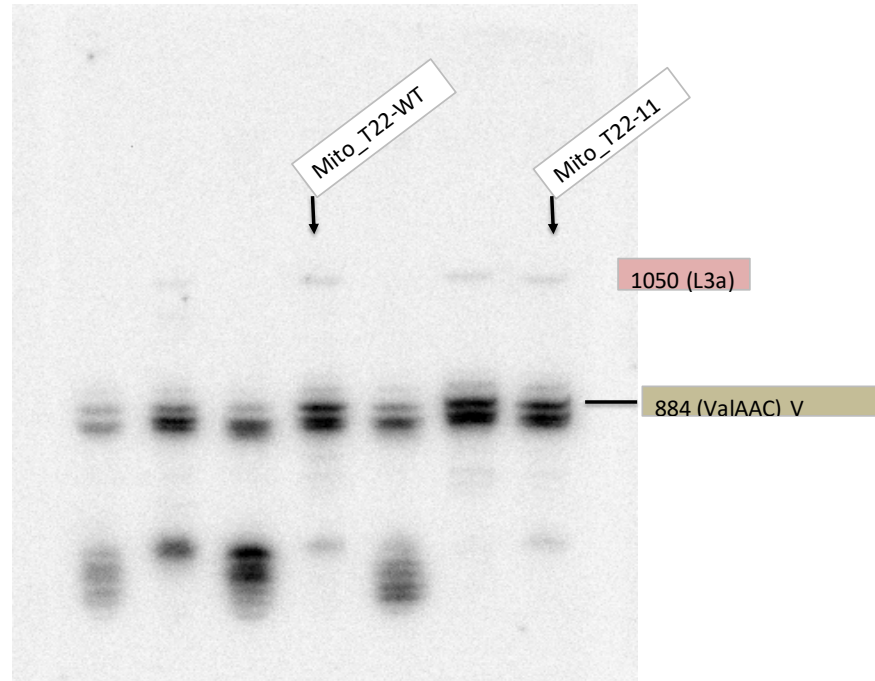


Probe_884-BI.210611

NO.	Index	PSL	
MtT22-WT	U1	226,7	1050
MtT22-11	U2	212,3	
MtT22-WT	U3	4006	884
MtT22-11	U4	4143,5	

BI.21.6.11 sd884-2

	884	1050	sd/1050		Log2	%
MtT22-WT	4006	226,7	17,671	1,000	0,000	100,0
MtT22-11	4143,5	212,3	19,517	1,104	0,143	110,4



Results-BI.210611

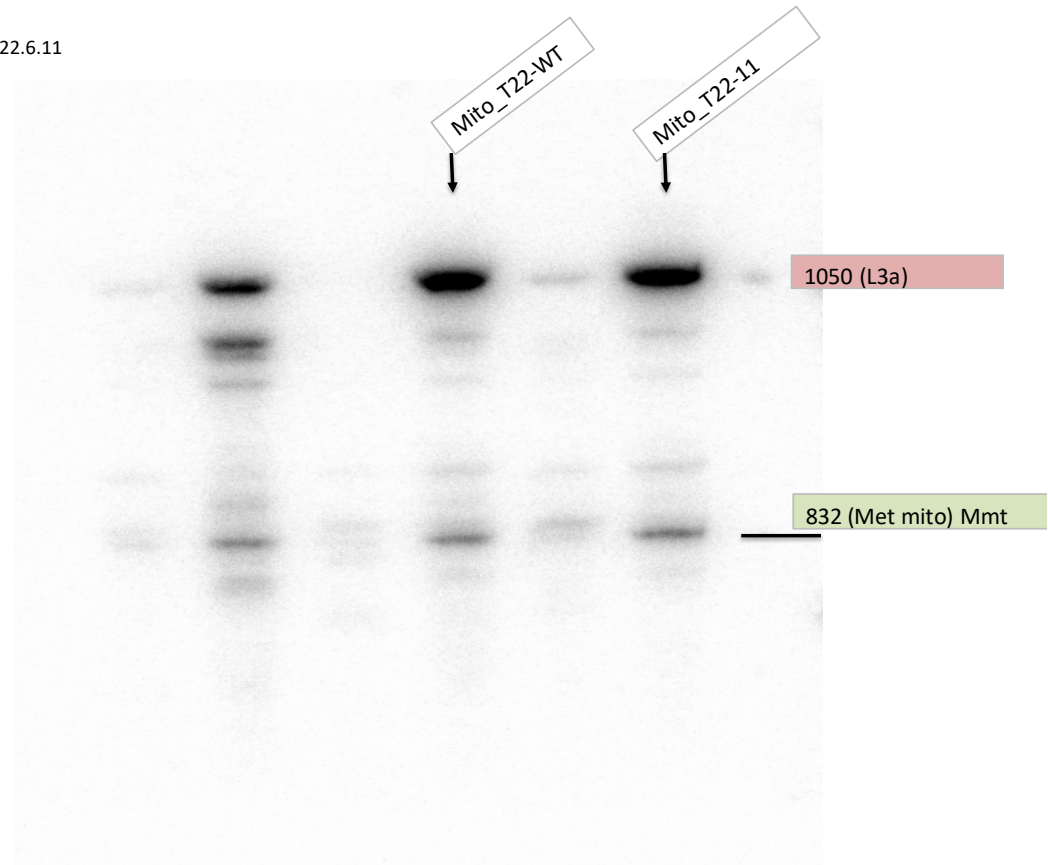
MtT22-11	62	831	61	63	884	AV	SD
61			72	70,0		71,0	1,3
62	130,8	126,6		151,1		136,2	13,1
63				115,7		115,7	#DIV/0!
831		116,1				116,1	#DIV/0!
884					110,4	110,4	#DIV/0!

Probe_832-BI.220611

NO.	Index	PSL
MtT22-WT	U2	928,91
MtT22-11	U3	1140,1
MtT22-WT	U8	8822,55
MtT22-11	U9	9481,33

	832	1050	sd/1050		Log2	%
MtT22-WT	928,91	8822,55	0,105	1,000	0,000	100,0
MtT22-11	1140,1	9481,33	0,120	1,142	0,192	114,2

sd832 bl.22.6.11



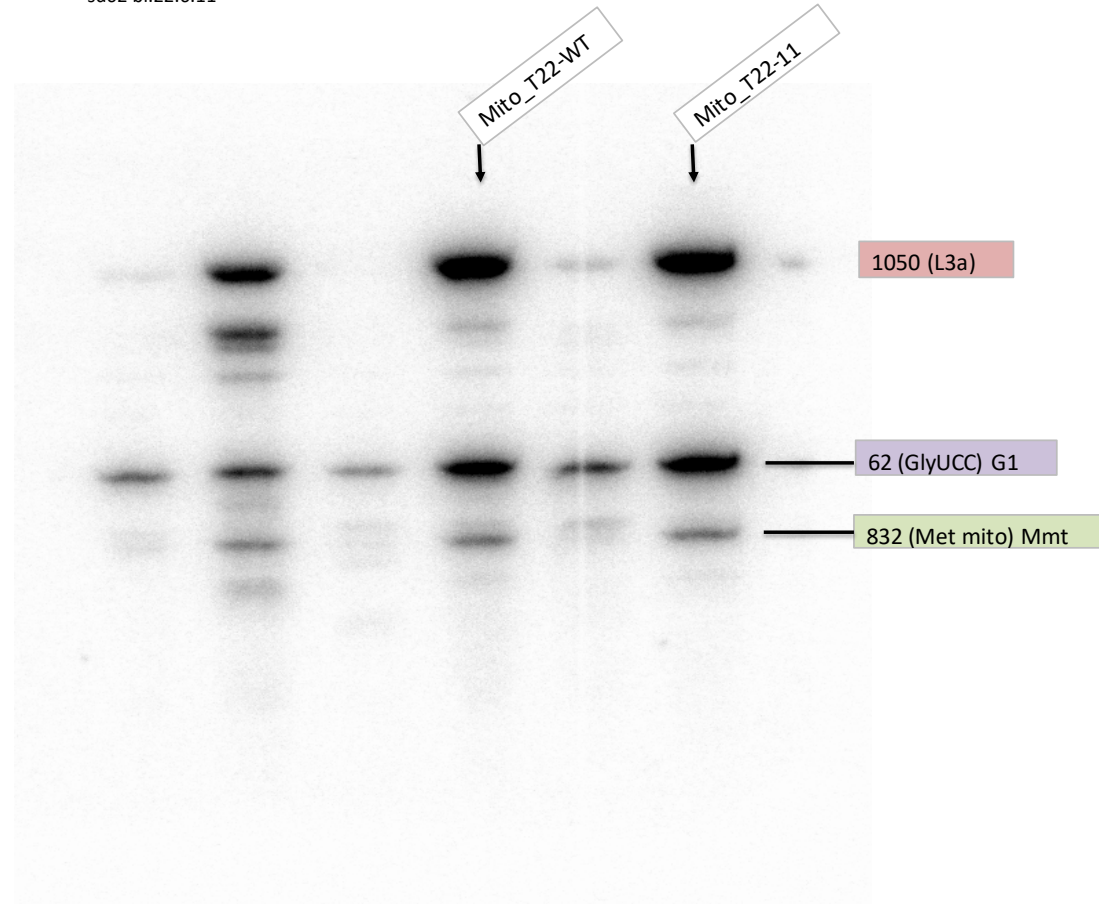
Probe_62-BI.220611

NO.	Index	PSL
MtT22-WT	U2	6617,43
MtT22-11	U3	8150,25
MtT22-WT	U8	12843,65
MtT22-11	U9	13334,44
MtT22-WT	U14	1311,72
MtT22-11	U15	1398,04

	62	1050	sd/1050		Log2	%
MtT22-WT	6617,43	12843,65	0,515	1,000	0,000	100,0
MtT22-11	8150,25	13334,44	0,611	1,186	0,246	118,6

	832	1050	sd/1050		Log2	%
MtT22-WT	1311,72	12843,65	0,102	1,000	0,000	100,0
MtT22-11	1398,04	13334,44	0,105	1,027	0,038	102,7

sd62 bl.22.6.11



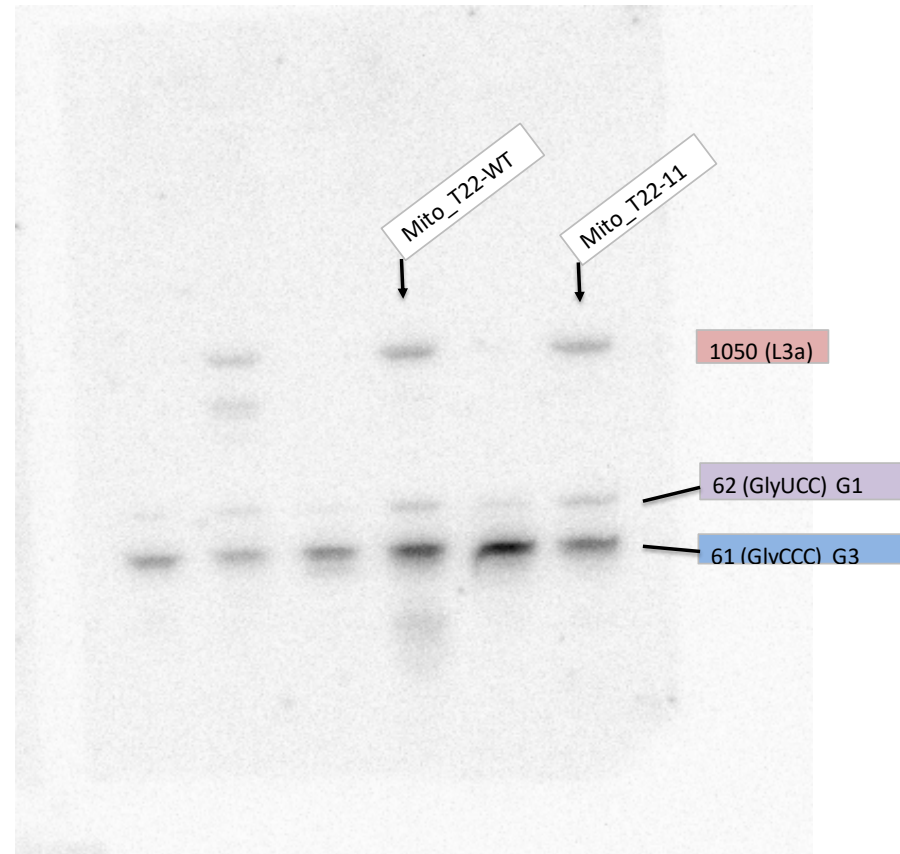
Probe_61-BI.220611

NO.	Index	PSL	
MtT22-WT	U1	605	1050
MtT22-11	U2	587,1	
MtT22-WT	U3	2287,5	61
MtT22-11	U4	1700,2	
MtT22-WT	U5	316,3	62
MtT22-11	U6	336,5	

Bl. 22.6.11 sd61

	61	1050	sd/1050		Log2	%
MtT22-WT	2287,5	605	3,781	1,000	0,000	100,0
MtT22-11	1700,2	587,1	2,896	0,766	-0,385	77

	62	1050	sd/1050		Log2	%
MtT22-WT	316,3	605	0,523	1,000	0,000	100,0
MtT22-11	336,5	587,1	0,573	1,096	0,133	109,6



Probe_63-BI.220611

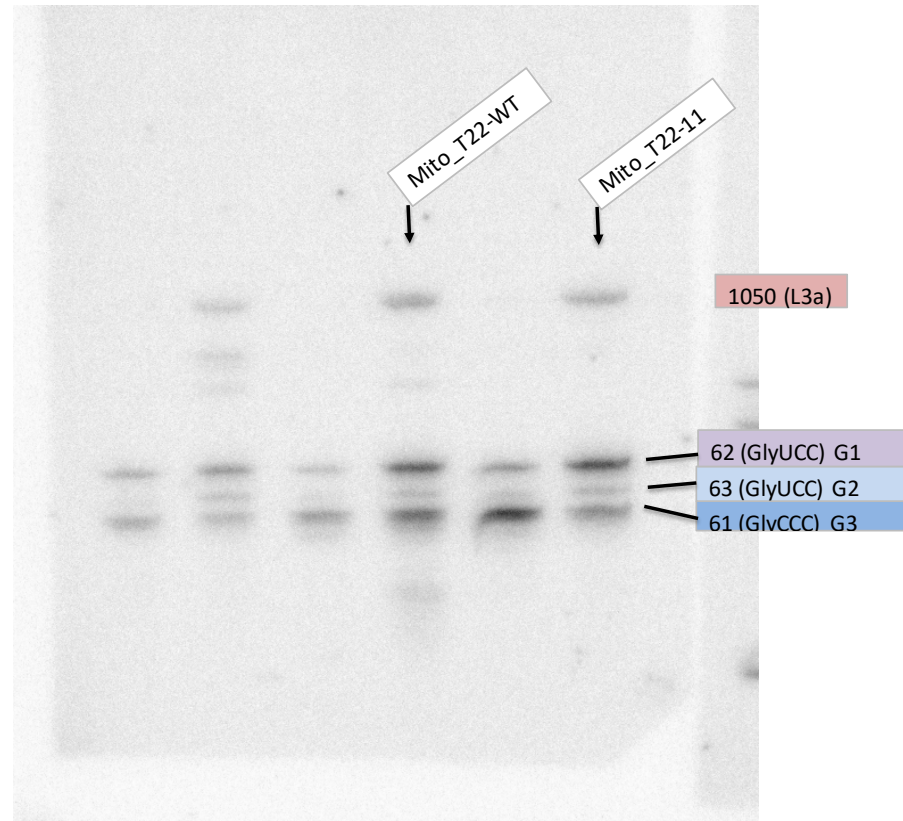
NO.	Index	PSL	
MtT22-WT	U1	622,1	1050
MtT22-11	U2	592	
MtT22-WT	U3	594	63
MtT22-11	U4	648	
MtT22-WT	U5	1596	62
MtT22-11	U6	1938	
MtT22-WT	U7	1642	61
MtT22-11	U8	1190,3	

BI.22.6.11 sd63

	63	1050	sd/1050		Log2	%
MtT22-WT	594	622,1	0,955	1,000	0,000	100,0
MtT22-11	648	592	1,095	1,146	0,197	114,6

	62	1050	sd/1050		Log2	%
MtT22-WT	1596	622,1	2,566	1,000	0,000	100,0
MtT22-11	1938	592	3,274	1,276	0,352	127,6

	61	1050	sd/1050		Log2	%
MtT22-WT	1642	622,1	2,639	1,000	0,000	100,0
MtT22-11	1190,3	592	2,011	0,762	-0,393	76,2

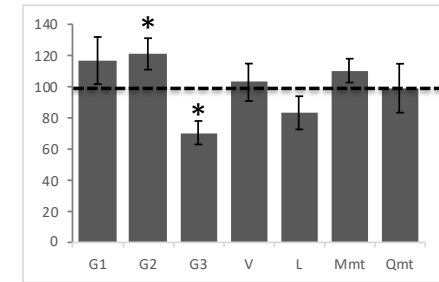


Results-BI.220611

MtT22-11	832	62	61	63	AV	SD
61			76,6	76,2		0,3
62		118,6	109,6	127,6		9,0
63				114,6		#DIV/0!
832	114,2	102,7			108,4	8,2

Sum up_Fig5B

Probe Name	GlyGCC 62 G1	GlyUCC 63 G2	GlyCCC 61 G3	ValAAC 884 V	Leu AAG 958 L	Met mt 832 Mmt	Gln mt 831 Qmt	L3a 1050
21.6.2011	100	130,8	115,7	72	110,4		116,1	
22.6.2011	100	118,6	114,6	77		114,2		100,0
2.9.11	100	100,7	132,6	62,2	92,3	76,5	101,4	95,5
8.9.11(1rs)	100			115,60	95,45			100
8.9.11(3ms)	100			92,83	77,51	115,10	85,30	100
AV	117	121	70	103	83	110	99	100
SD	15	10	8	12	11	8	16	0
TTEST	0,10	0,03	0,01	0,34	0,06	0,07	0,46	
	G1	G2	G3	V	L	Mmt	Qmt	
	117	121	70	103	83	110	99	
	15	10	8	12	11	8	16	



* > 0,05