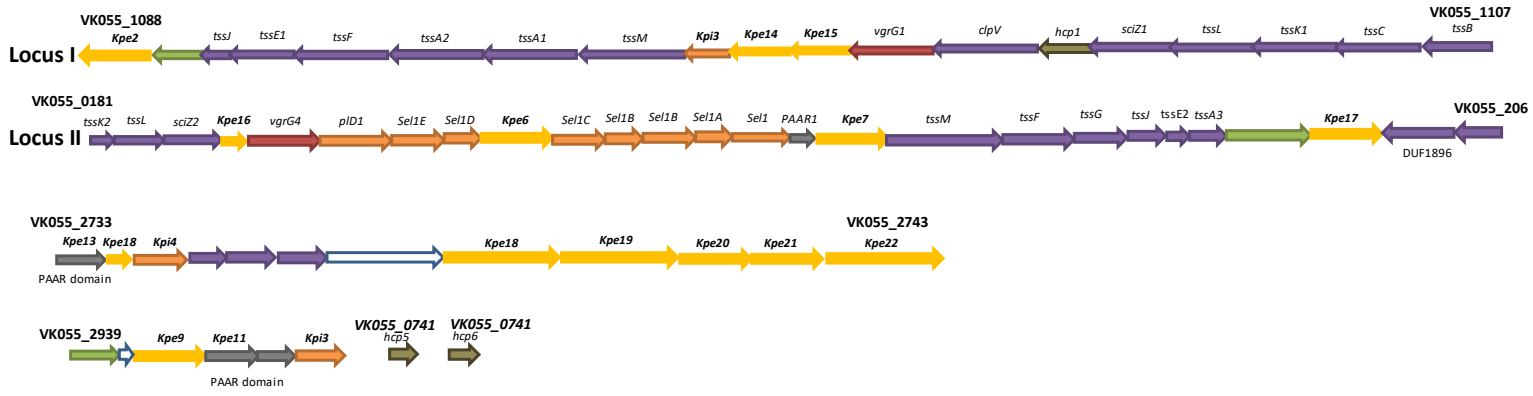
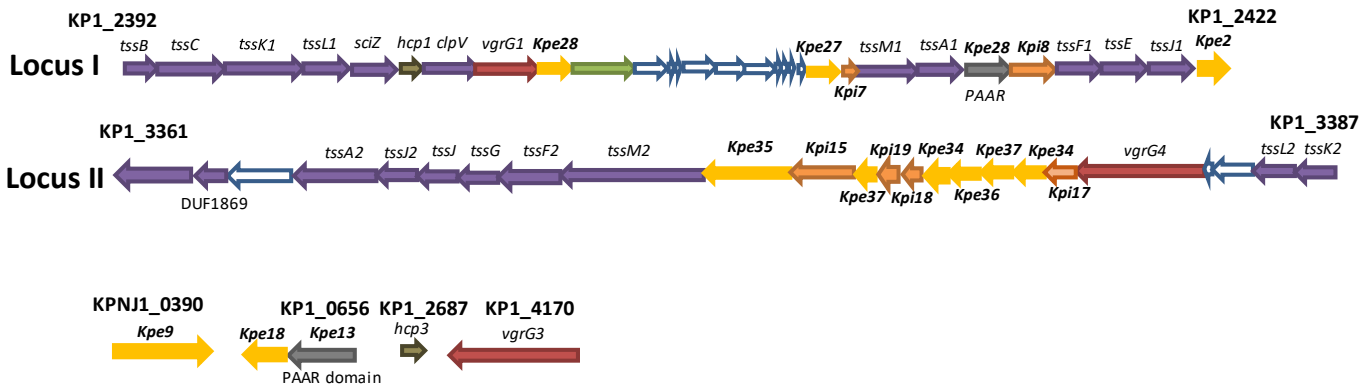


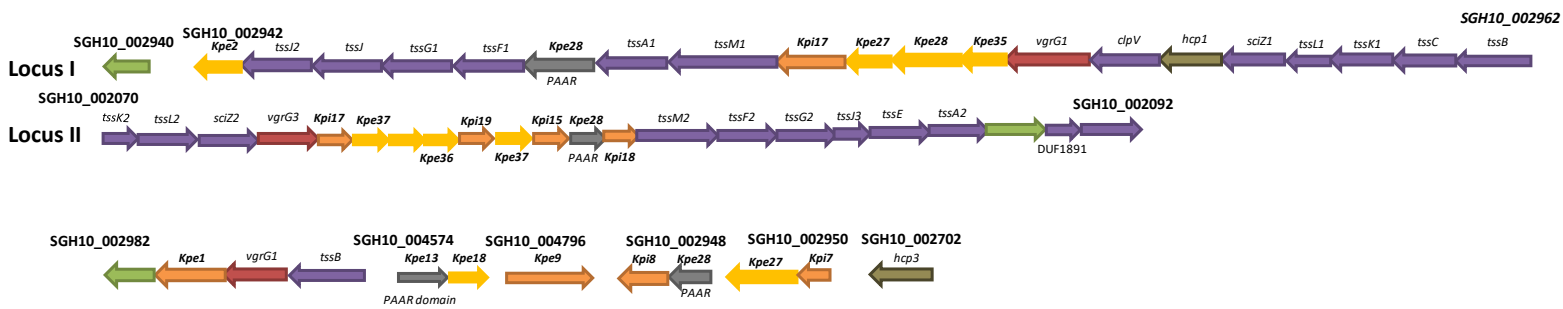
**A. *K. pneumoniae* ATCC 43816**



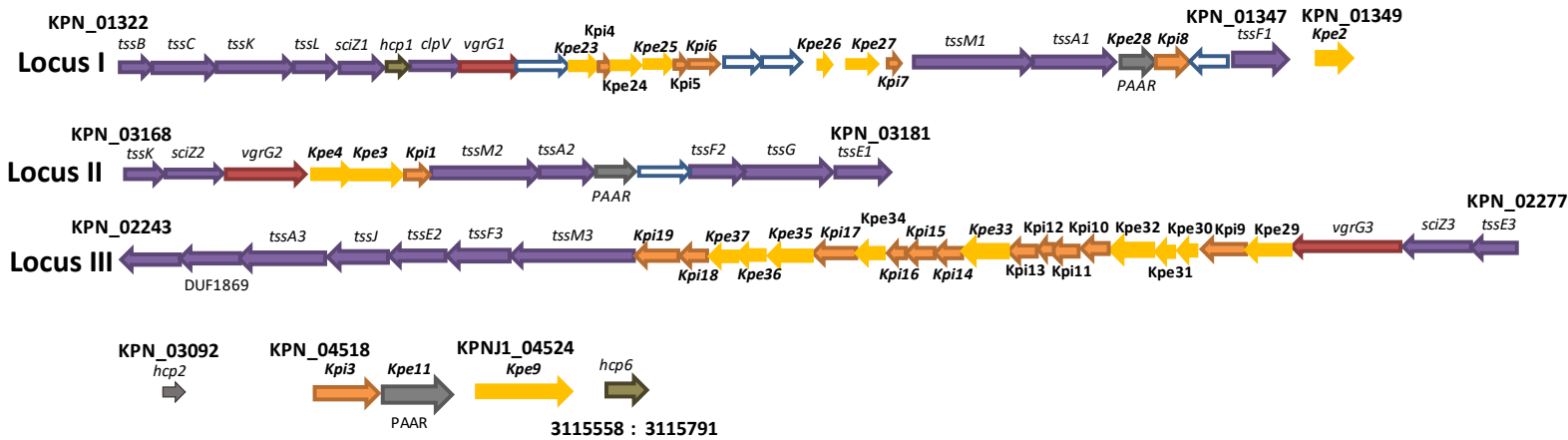
**B. *K. pneumoniae* NTUH-K2044**



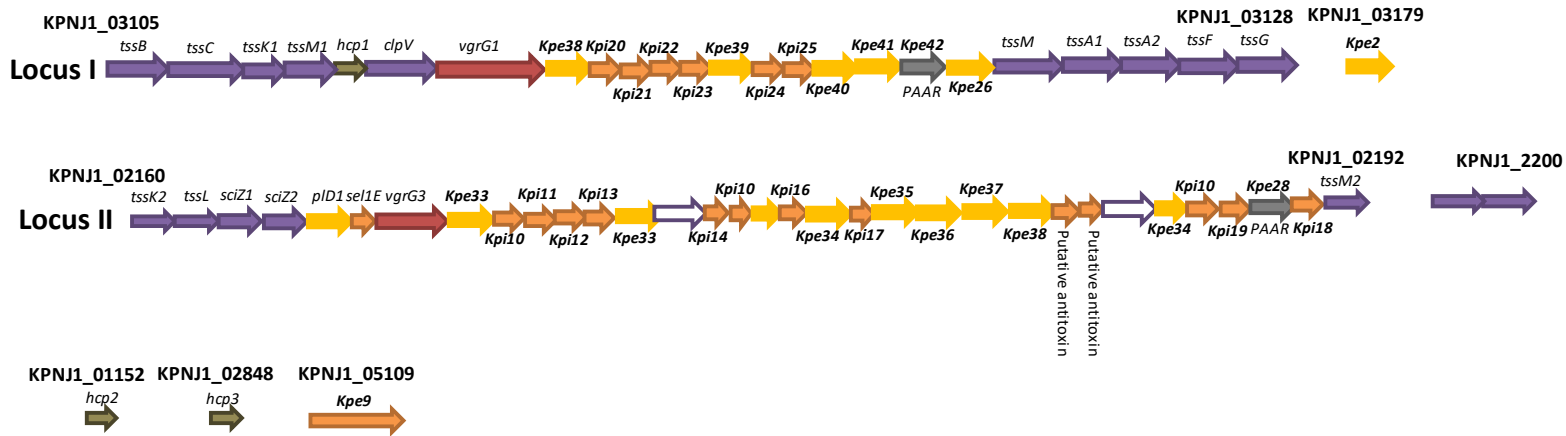
**C. *K. pneumoniae* SGH10**



### D. *K. pneumoniae* MGH78578



### E. *K. pneumoniae* NJST258\_1



### S1 Figure. Predicted T6SS loci in *K. pneumoniae* strains.

Analysis of the gene loci encoding the T6SS in five *K. pneumoniae* strains. Each loci is characterized by a distinct *vgrG* and a set of putative effector(s) and immunity proteins. For each strain, additional *t6ss* related genes found elsewhere in the genome are indicated.

In all panels, the colour code of the genes indicate putative structural genes (purple), *hcp* (dark green), *vgrG* (red), effector (denoted as Kpe for *K. pneumoniae* effectors) (yellow), immunity protein (denoted as Kpi for *K. pneumoniae* immunity protein) (orange), regulator (green), and PAAR-domain containing protein (grey).