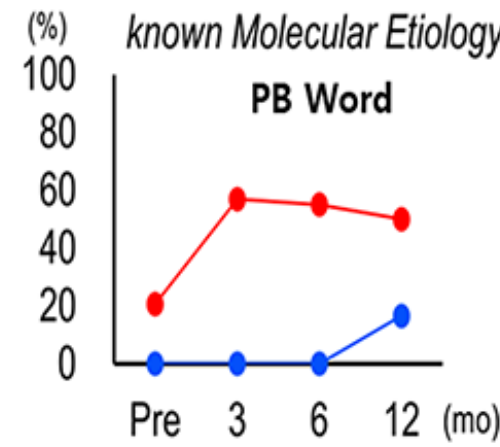
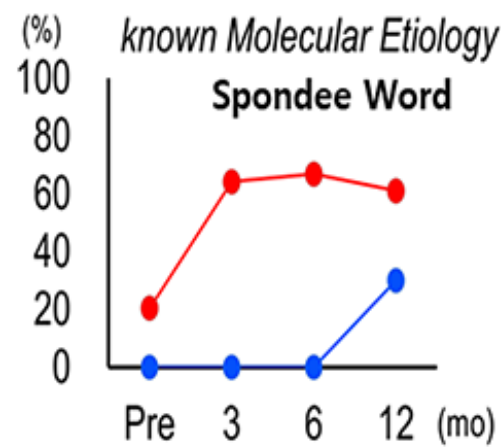
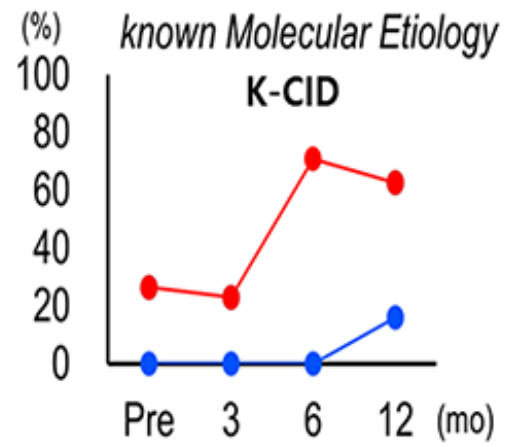


The molecular etiology of deafness and auditory performance in the postlingually deafened cochlear implantees

Sang-Yeon Lee^{1§}, Ye Ji Shim^{2§}, Jin-Hee Han¹, Jae-Jin Song¹, Ja-Won Koo¹, Seung Ha Oh³,
Seungmin Lee¹, Doo-Yi Oh¹, Byung Yoon Choi^{1*}



● GD
(Deaf duration <10yr)

● GD
(Deaf duration ≥10yr)