

## Supporting Information

### ***E. coli* Lipopolysaccharide Modulates Biological Activities of Human- $\beta$ -defensin Analogs but not Non-Ribosomally Synthesized Peptides**

**Viswanatha Krishnakumari\*, Taniya Mary Binny, Harikrishna Adicherla and Ramakrishnan Nagaraj**

**Author affiliations:** CSIR- Centre for Cellular and Molecular Biology, Uppal Road, Hyderabad-500 007, INDIA

**\*Author for correspondence: V. Krishnakumari**

**Tel: +91-40-27192586**

**Fax: +91-40-27160591**

**E-mail: [krishnak@ccmb.res.in](mailto:krishnak@ccmb.res.in)**

Figure S1

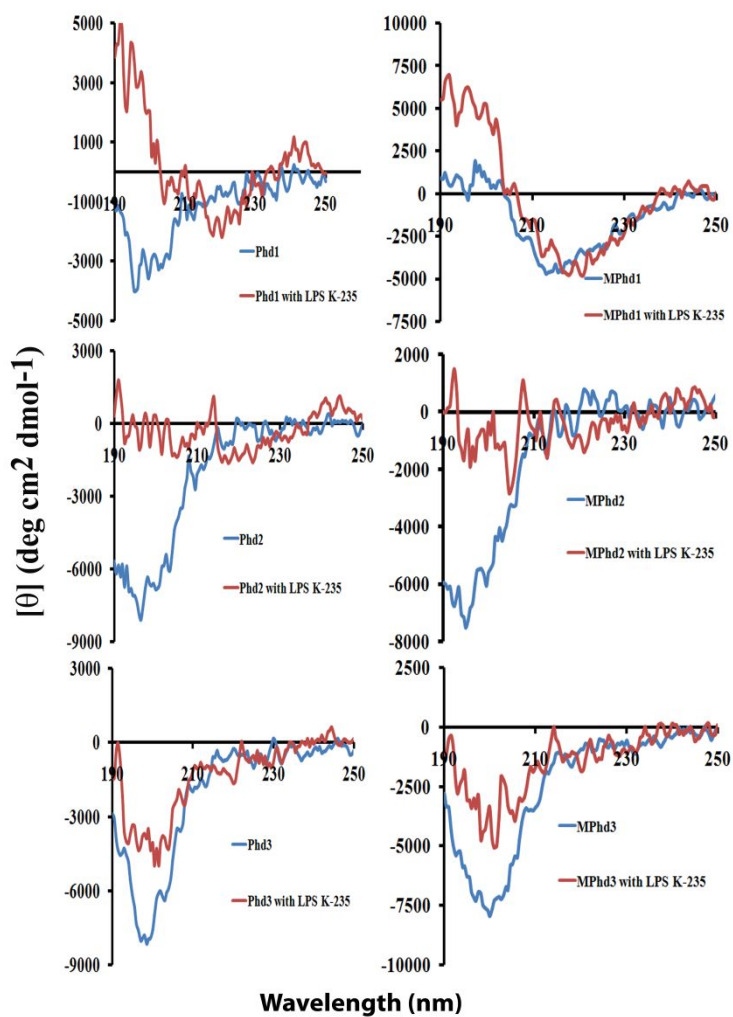


Figure S1: CD spectra of Phd1-3 and MPhd1-3 in 10 mM phosphate buffer pH 7.4 and peptides with LPS *E. coli* K-235 in buffer at a ratio (1:5). Blue line indicates peptide in buffer and red line indicates peptide with LPS *E. coli* K-235 in buffer at a ratio (1:5).

Figure S2

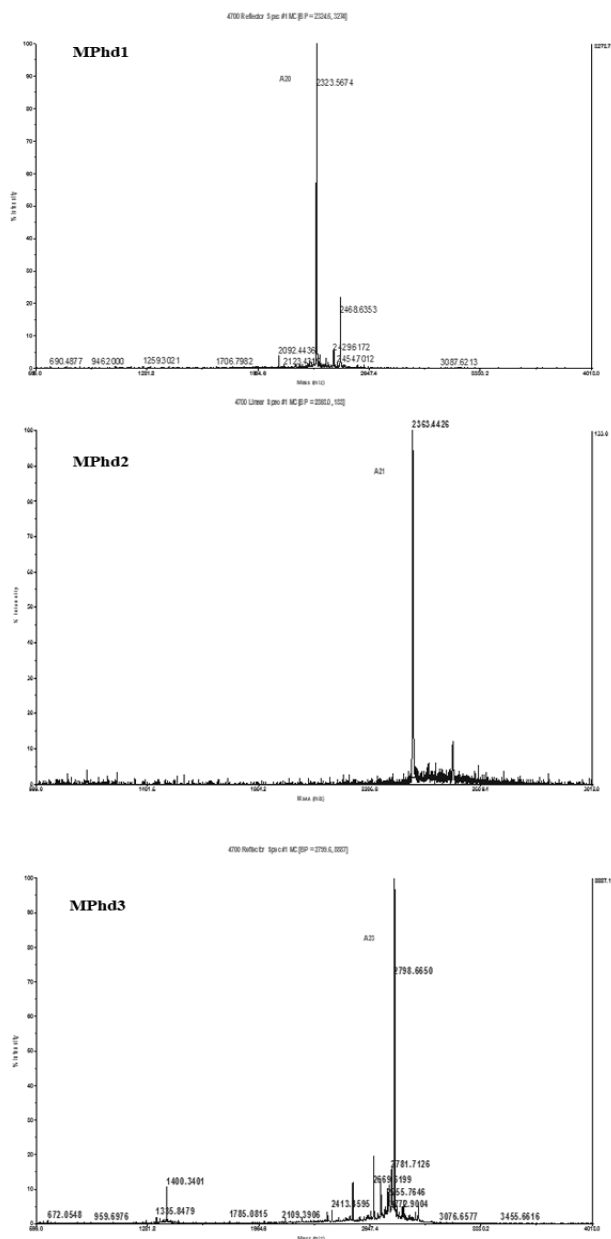


Figure S2: MALDI-TOF MS spectra of MPhd1 (2323.5674), MPhd2 (2363.4426) and MPhd3 (2798.6650). Observed M/Z values are indicated in parentheses. Note: N-terminal myristoylation was carried out on Phd1-3 to obtain MPhd1-3 peptides.