



Figure S2. Positive control for immunohistochemistry of HOXD10. Colonic carcinoma tissue demonstrated strong staining. HOXD10 is positively stained in the nucleus and cytoplasm (x400). HOX, homeobox.

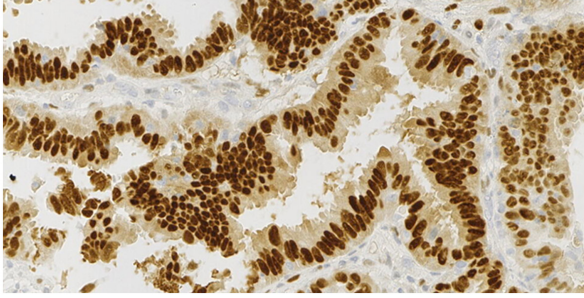


Table SI. Primer sequences and methylation-specific PCR conditions.

Gene	Primer	Sequences, 5'-3'	Product	
			Length, BP	TM (°C)
HOXD10	MF	TTATTTATGGGGATTCGGGTTC	239	60
	MR	AAAAAAACCGAATCCAAAACAAACG	241	
	UF	ATTTATTTATGGGGATTTGGGTTC		
	UR	AAAAAAACCAAATCCAAAACAAACA		
ZNF545	MF	TTTTTTTTAGGTTTTGTCGCGTC		177
	MR	CTACTAAAAAACCGAACGCG	164	
	UF	TTTTTTTTAGGTTTTGTTGTGTTC		
	UR	CCAAACACACTCACAAAATACA		
PCDH17	MF	GATTATCGGGTGTCTAGTTC		87
	MR	CCCTAACGCAACGTACGCG	90	
	UF	AGATTATGGGTGTTGTAGTTT		
	UR	AACCCTAACACAACATACACA		
MEIS1	MF	TGTAAGCGGGTAGTATCGATCG		203
	MR	ATACACAAAACCCTAACGCTCG	192	
	UF	GGGATTGTAAGTGGGTAGTATT		
	UR	CACTCACTTCCCTTAAATCAA		
SHH	MF	GGAGAGTTTTTCGTAGTCGC		127
	MR	CGTATACGCTCTCTTACGC	131	
	UF	GGTGGAGAGTTTTTTGTAGTTGT		
	UR	ACATATACACTCTCTTACACTT		

MF, forward sequence of methylation primers; MR, reverse sequence of methylation primers; UF, forward sequence of un-methylation primers; UR, reverse sequence of un-methylation primers; BP, base pairs; TM, melting temperature.