

Supplementary data

Design, synthesis, and biological evaluation of novel dipeptide-type SARS-CoV 3CL protease inhibitors: Structure–activity relationship study

Pillaiyar Thanigaimalai,^a Sho Konno,^a Takehito Yamamoto,^a Yuji Koiwai,^a Akihiro Taguchi,^a Kentaro Takayama,^a Fumika Yakushiji,^a Kenichi Akaji,^b Yoshiaki Kiso,^b Yuko Kawasaki,^c Shen-En Chen,^c Aurash Naser-Tavakolian,^c Arne Schön,^c Ernesto Freire,^c Yoshio Hayashi^{a*}

^aDepartment of Medicinal Chemistry, Tokyo University of Pharmacy and Life Sciences, Tokyo 192-0392, Japan

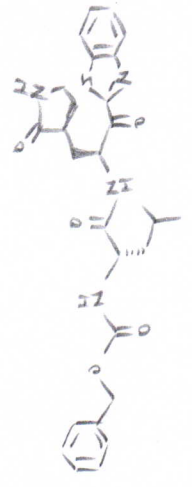
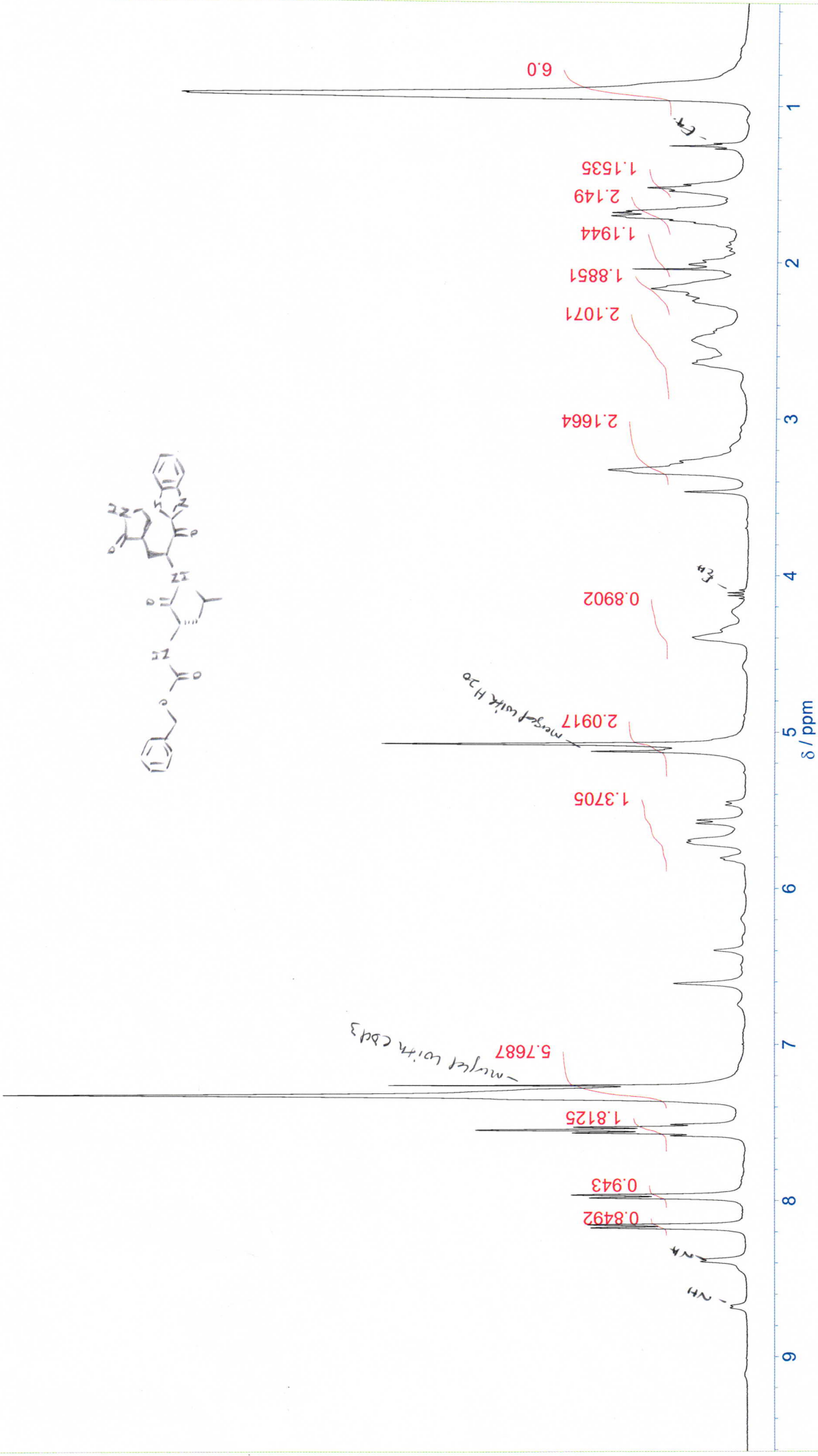
^bDepartment of Medicinal Chemistry, Kyoto Pharmaceutical University, Kyoto 607-8412, Japan

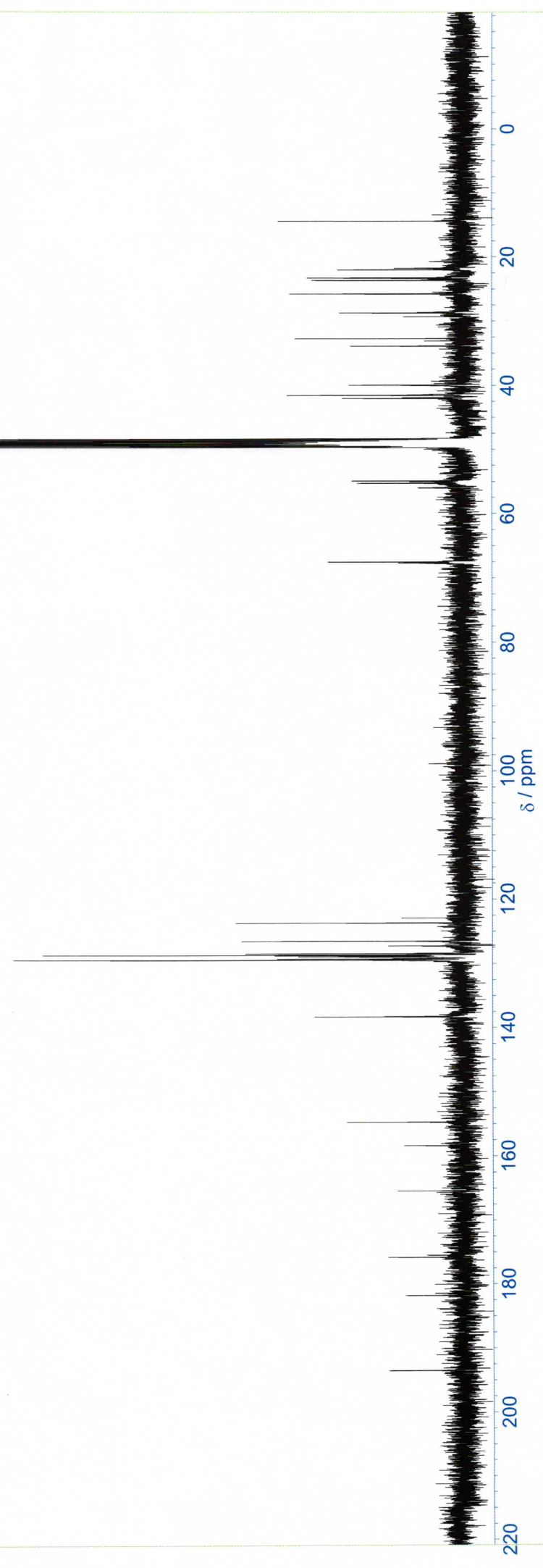
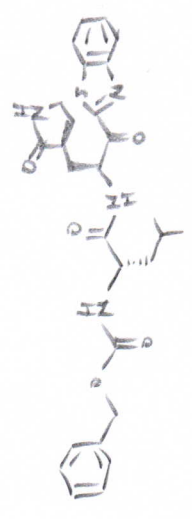
^cDepartment of Biology, Johns Hopkins University, Baltimore, MD, USA

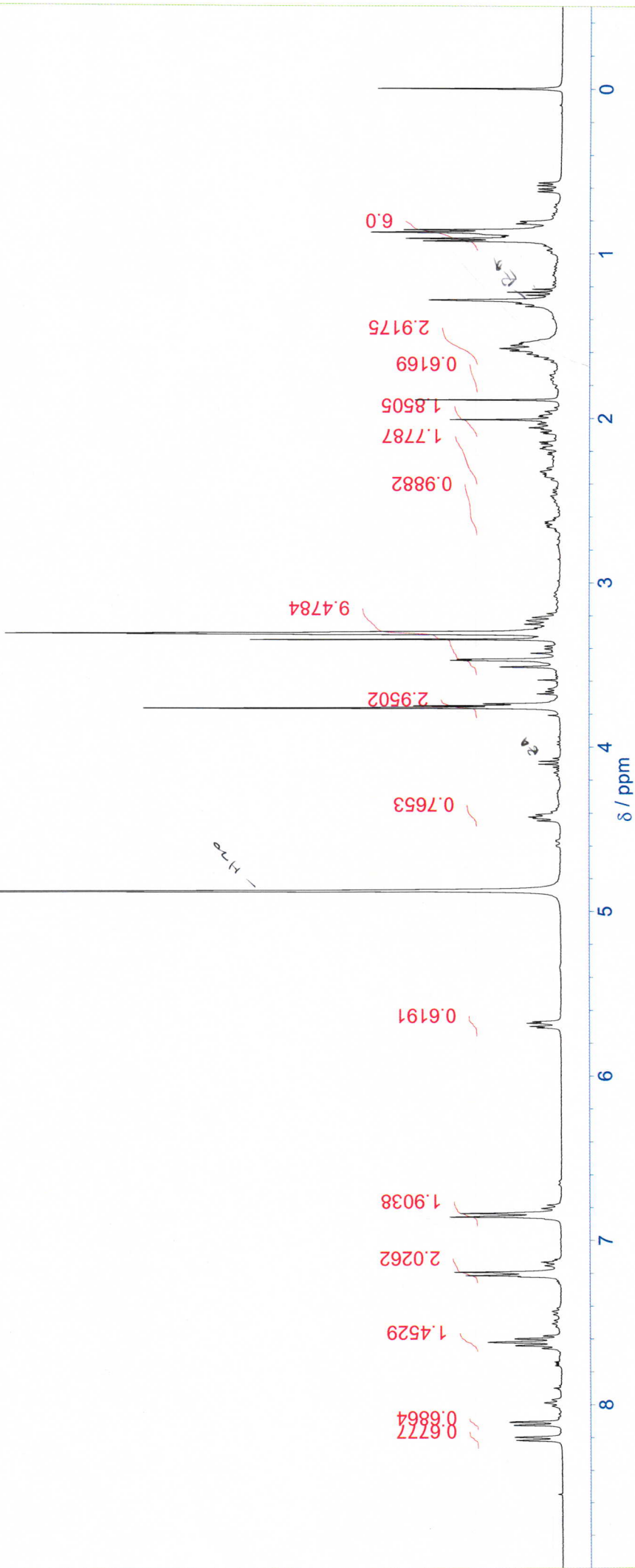
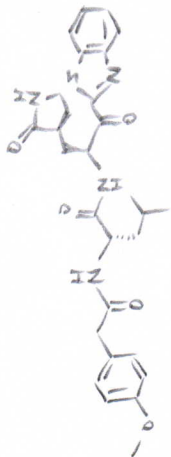
*To whom correspondence should be addressed: Department of Medicinal Chemistry, Tokyo University of Pharmacy and Life Sciences, Tokyo 192-0392, Japan. Tel./Fax: +81 42 676 3275.

E-mail address: yhayashi@toyaku.ac.jp (Y. Hayashi)

	Contents:	Page
¹ H and ¹³ C NMR spectra for compounds 25c , 26b , 26e , 26h , 26m , 26n and 27a .		S2-S15

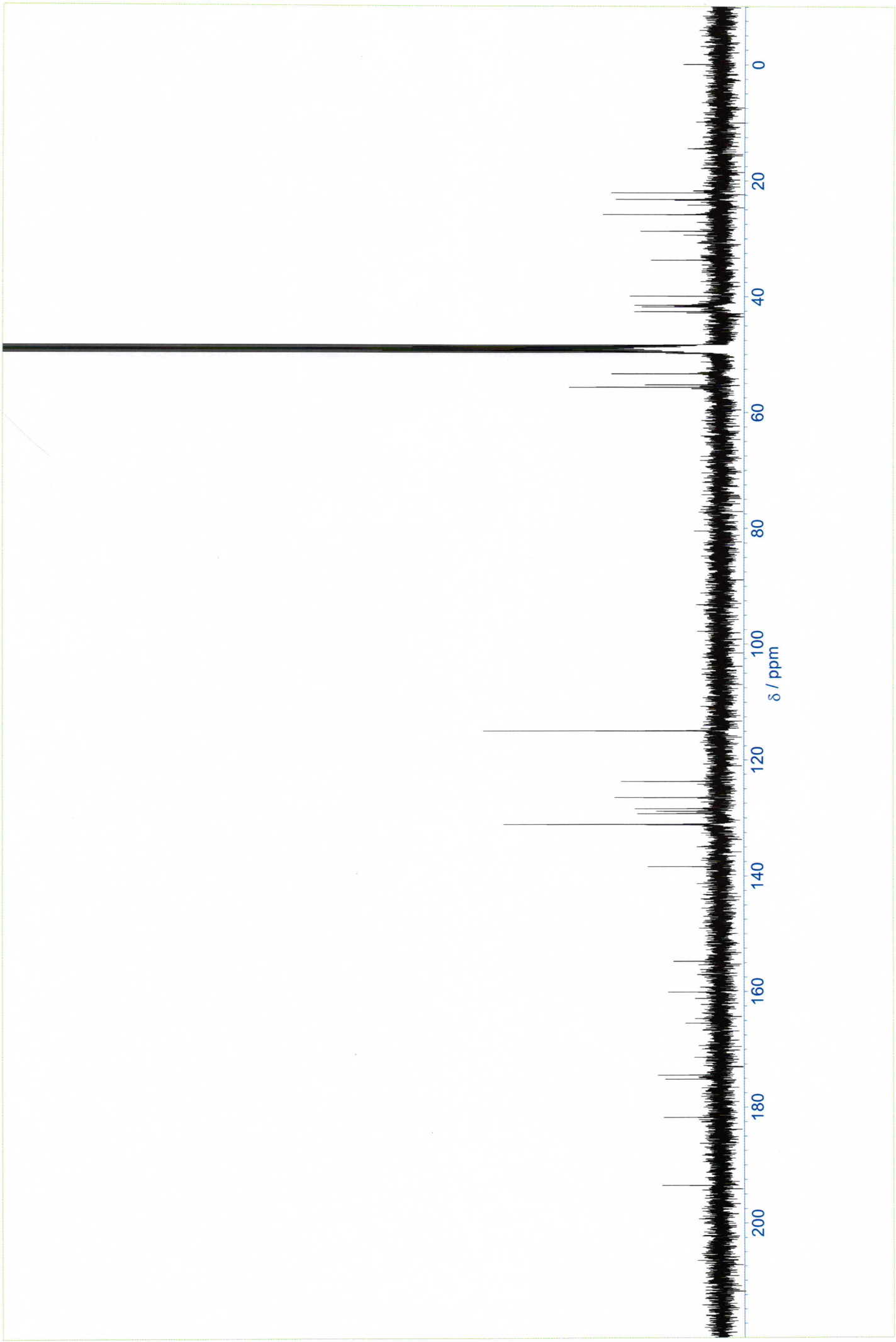






CDCl₃

26b



7.9254

2.9438

1.6905

2.4819

1.8059

2.1981

0.7095

1.0

1.1101

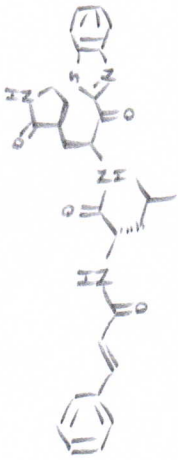
0.5673

4.6876

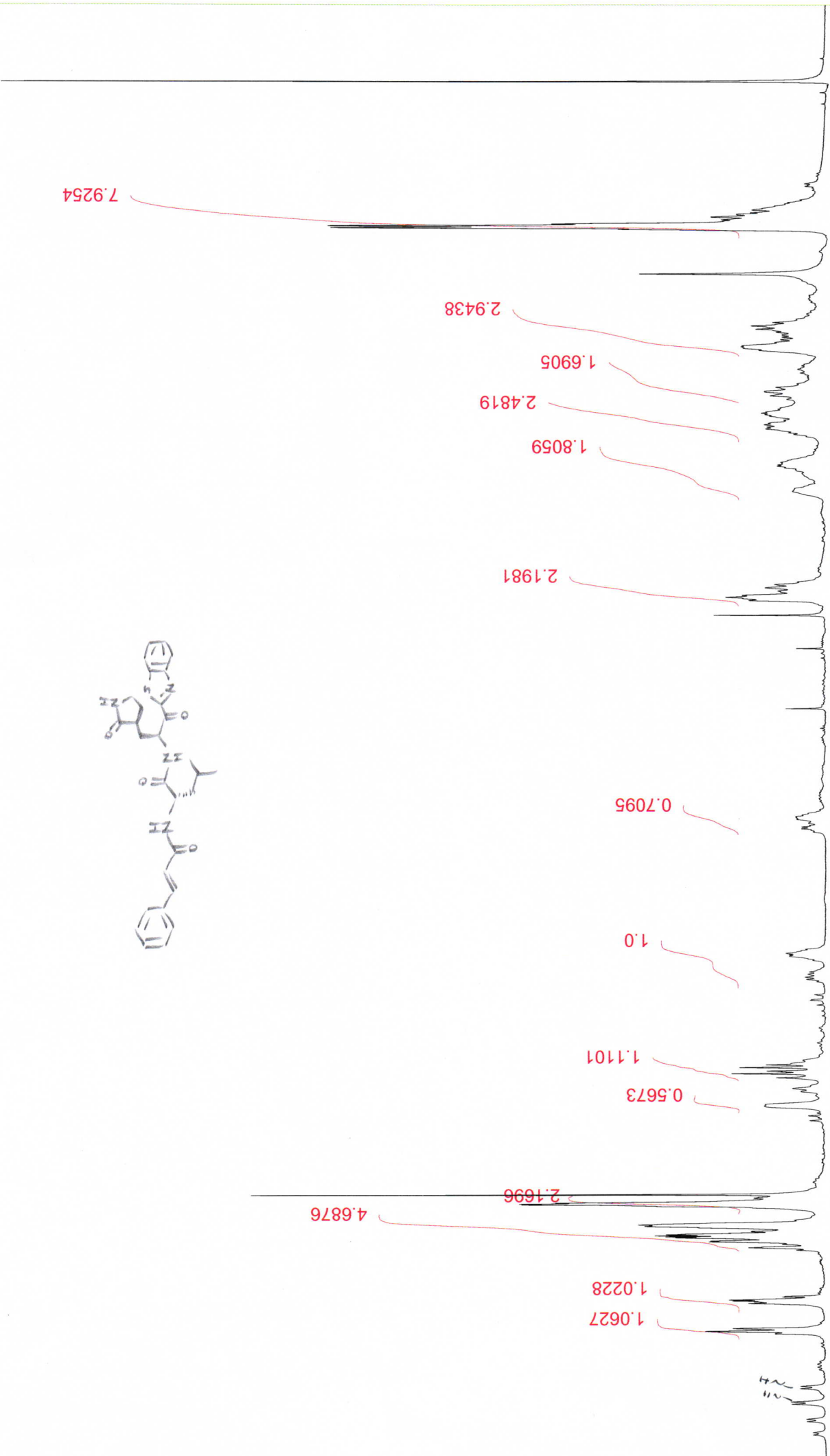
2.1696

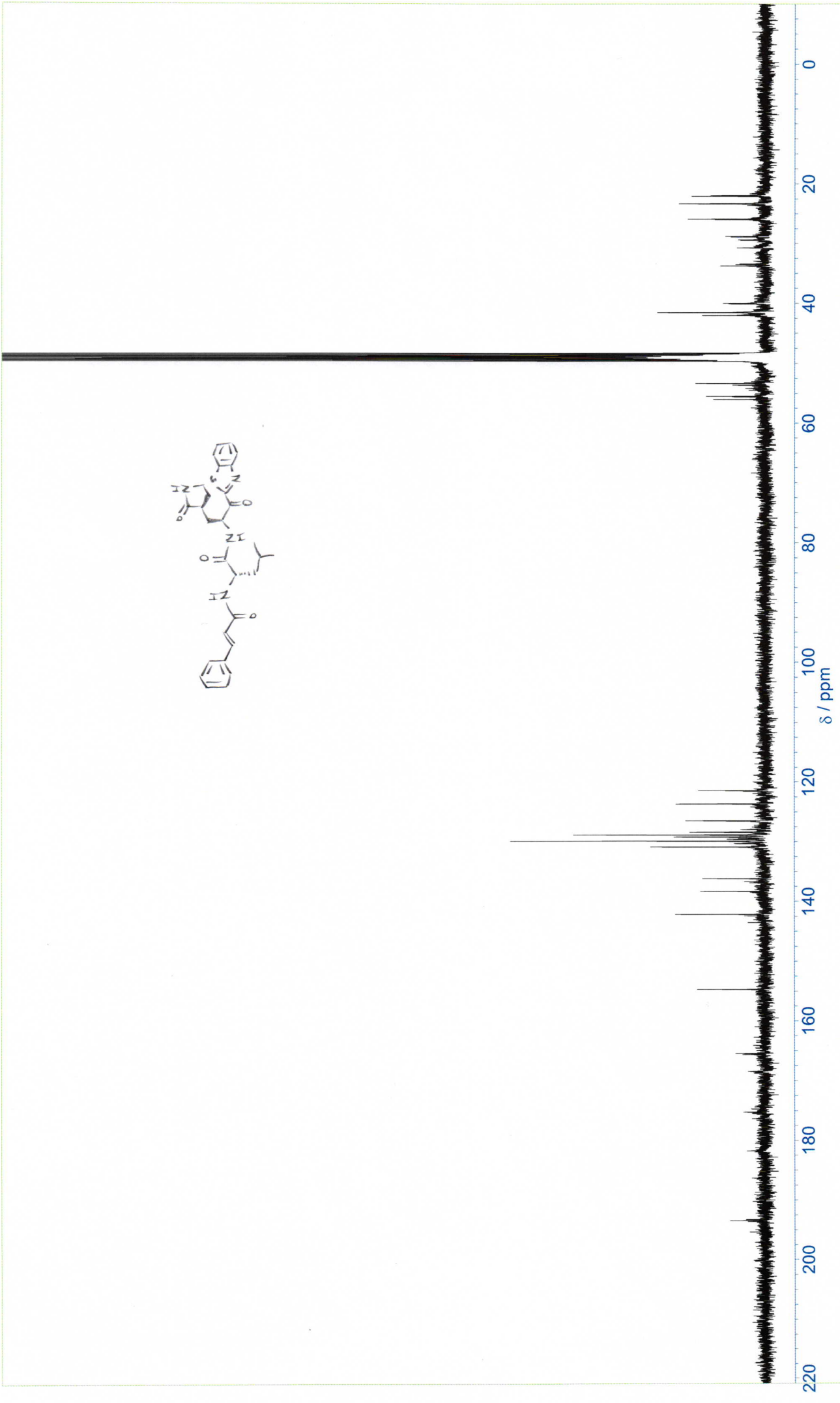
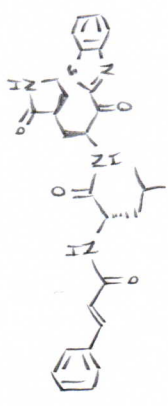
1.0228

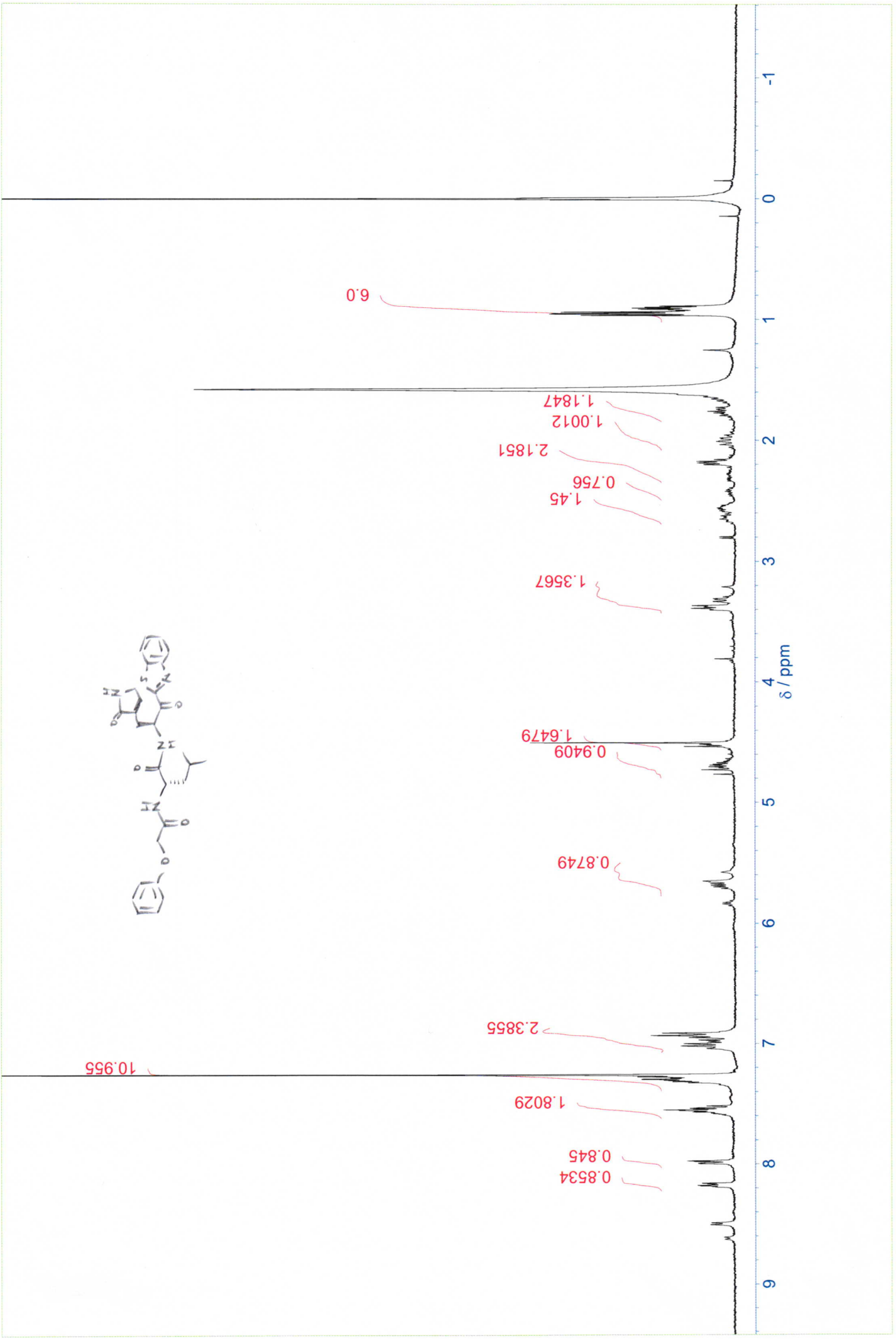
1.0627

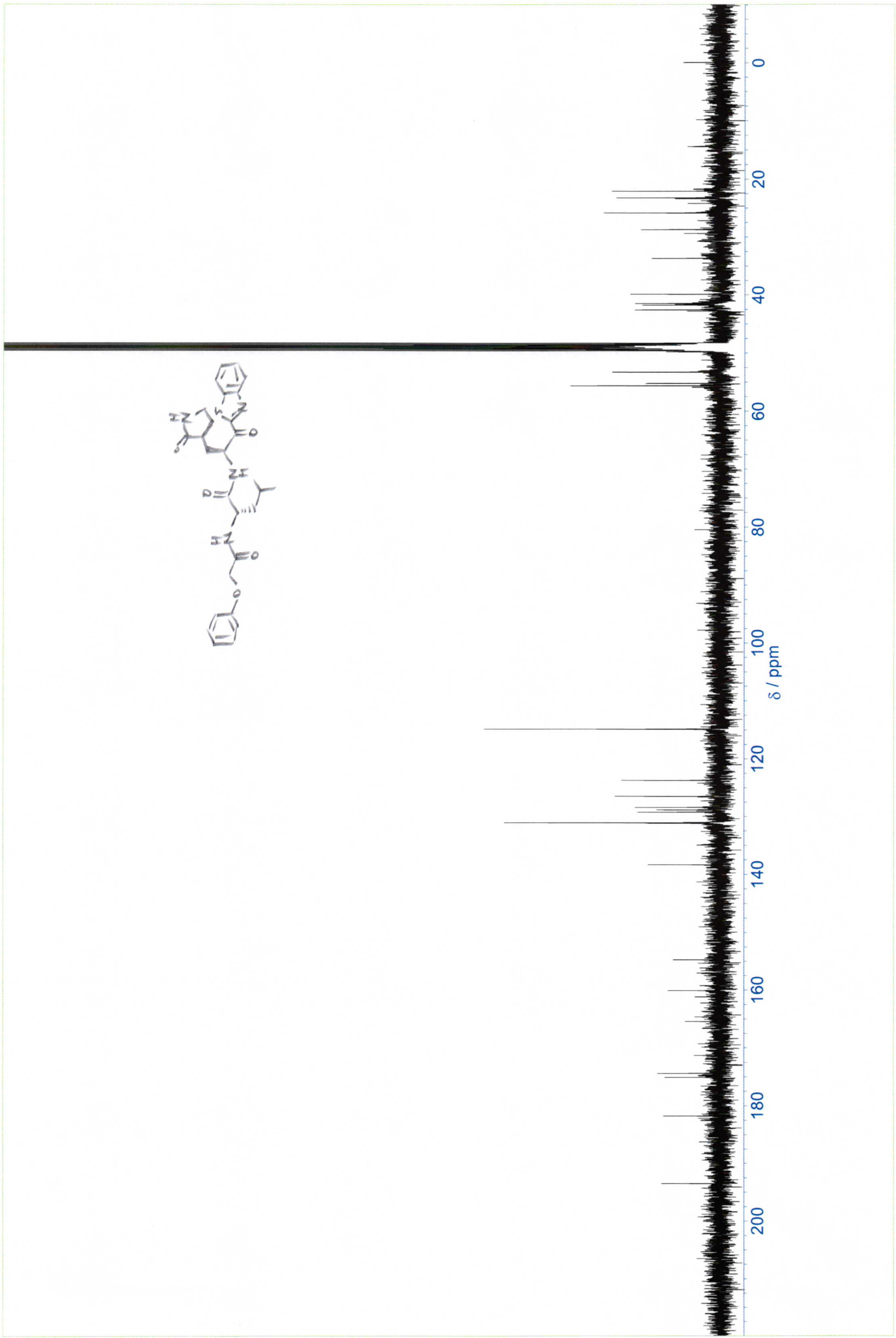
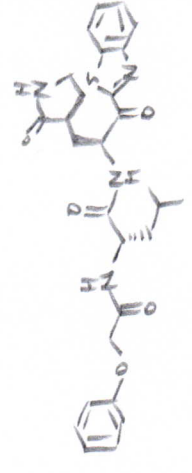


0 1 2 3 4 5 6 7 8 δ / ppm

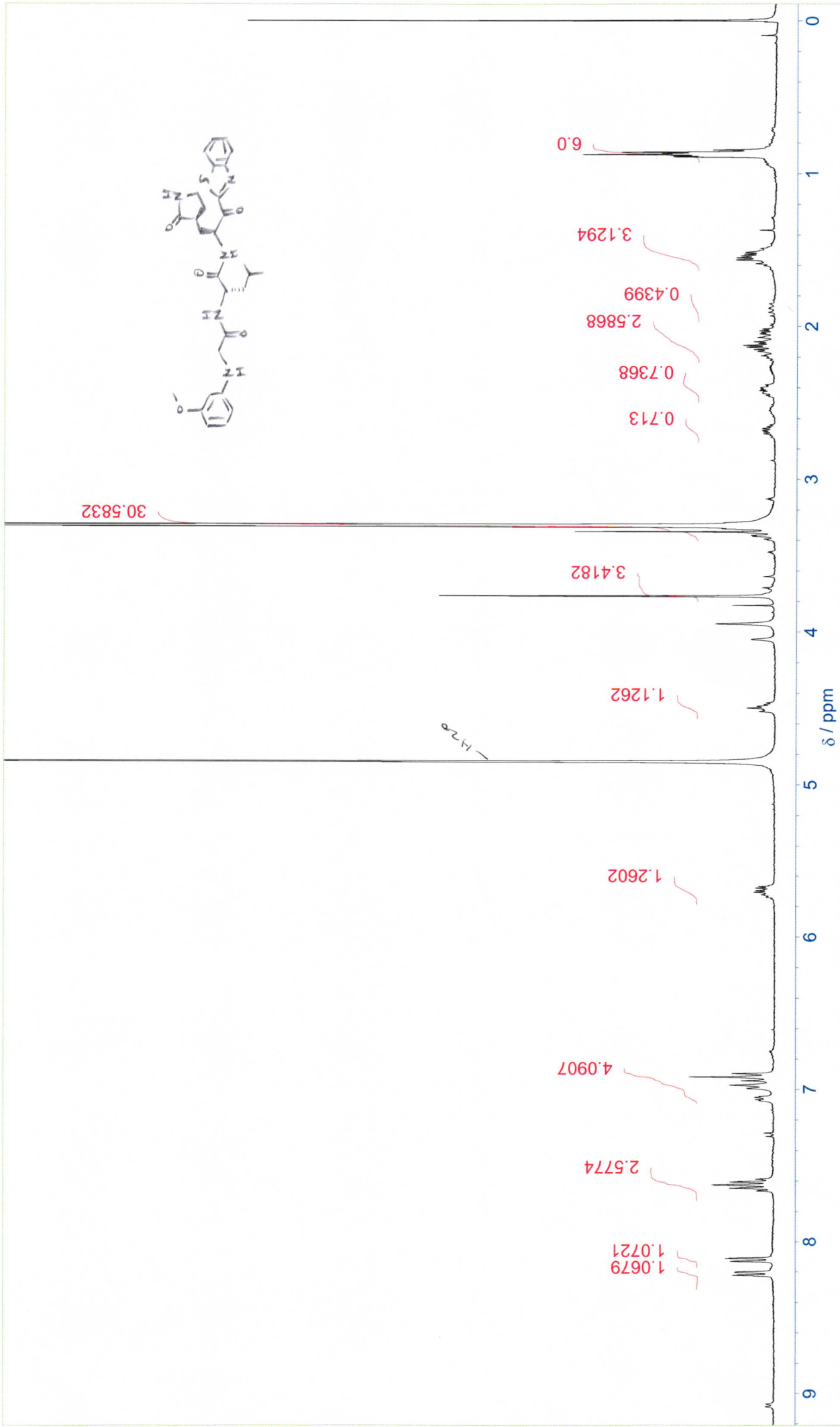
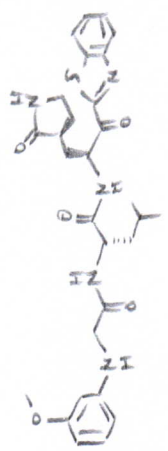








26m



4.20

26m

