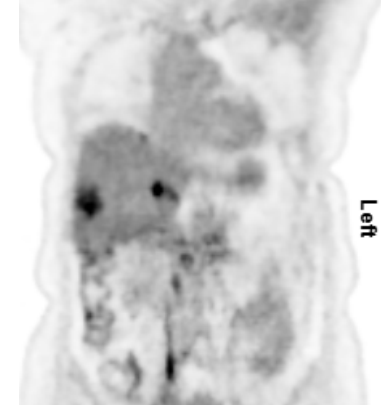
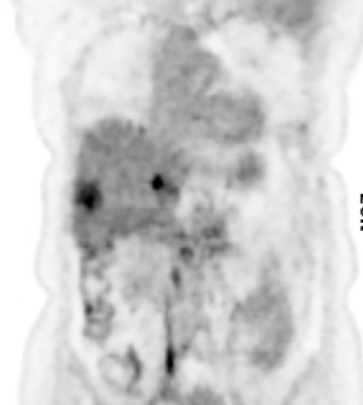
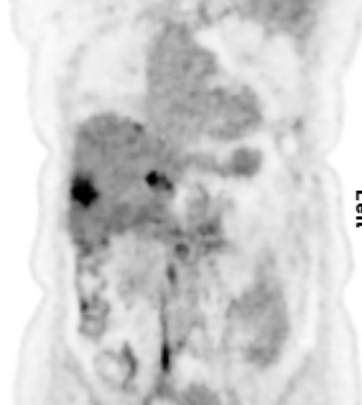
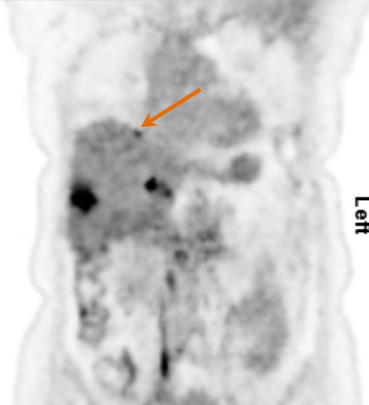


DDG-retro

RPM gated

Ungated matched

Ungated full

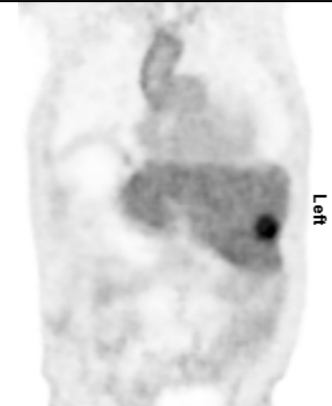
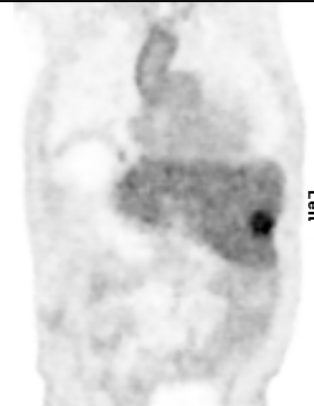
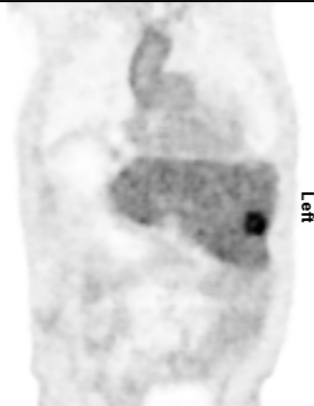
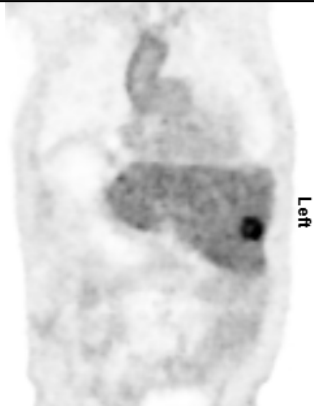


Rank: 1 (best)

2

4 (worst)

3



Rank: 2 (=)

2 (=)

2 (=)

1

Supplemental Figure 1. Two example cases, each showing a coronal slice. The image ranking provided by the radiologist (based on the whole volume) is shown below each image. In the upper image, the SUV_{max} of the lesion indicated by the arrow was 4.66, 4.16, 3.44 and 3.47 for the four images respectively (DDG-retro, RPM gated, Ungated matched, Ungated full). In the lower example, three of the images were ranked as equivalent. All images are on an SUV grayscale of 0–6.