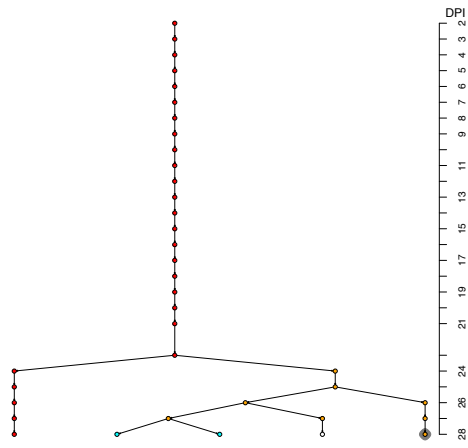
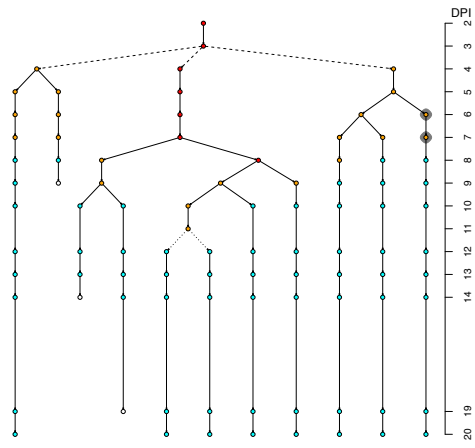


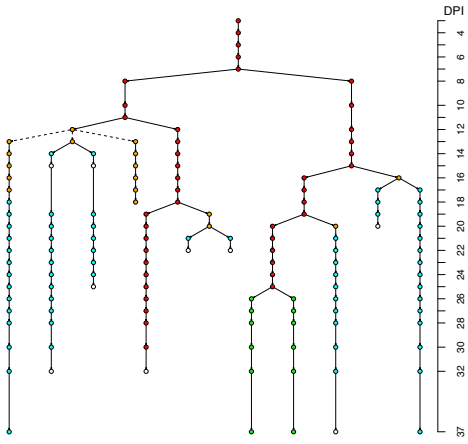
7.



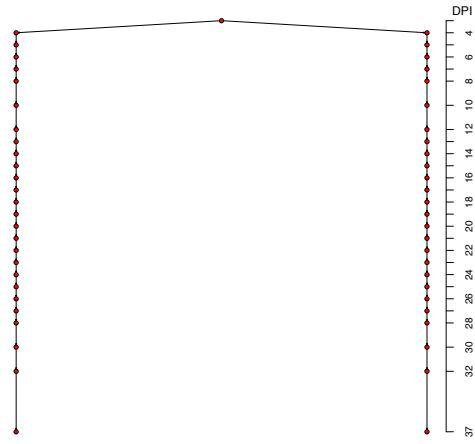
8.



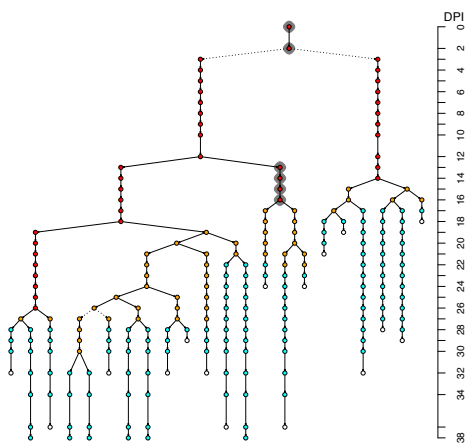
9.



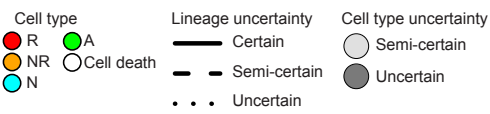
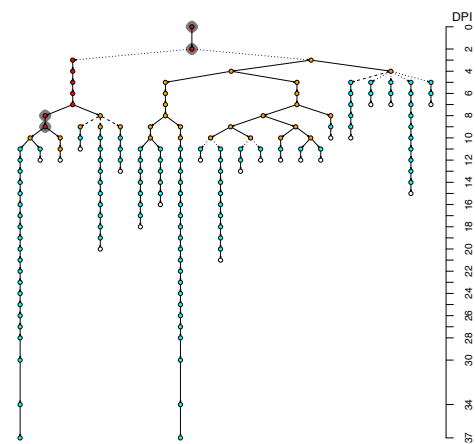
10.



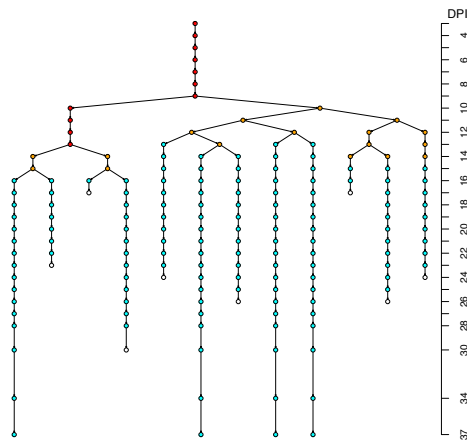
11.



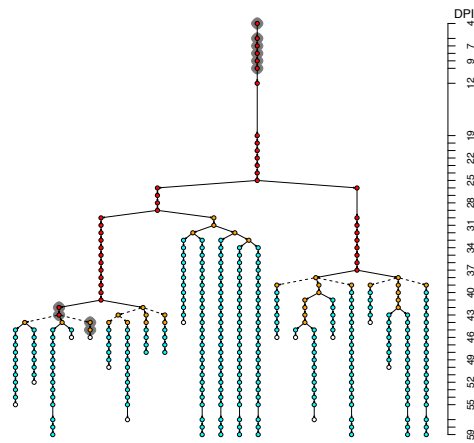
12.



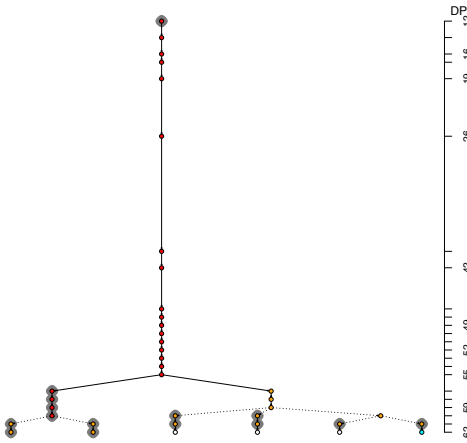
13.



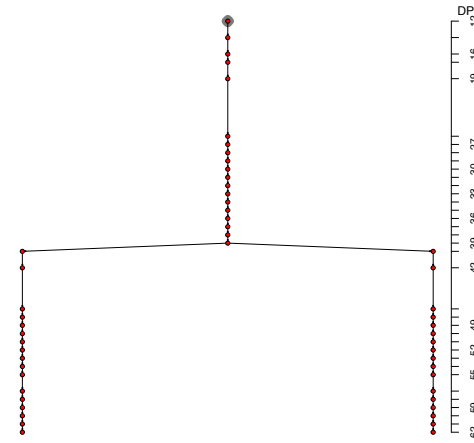
14.



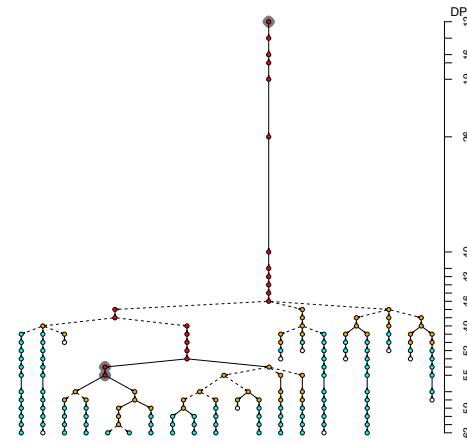
15.



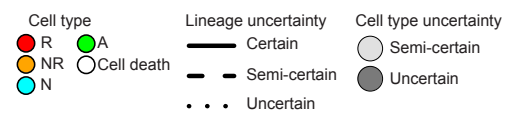
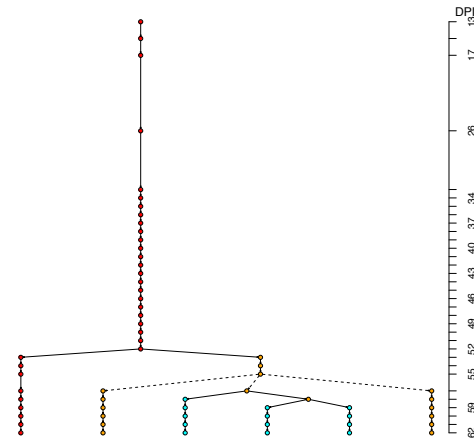
16.



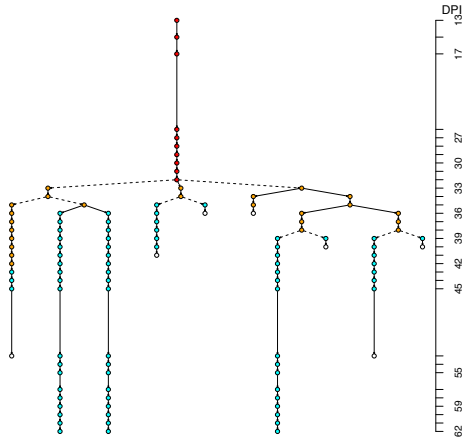
17.



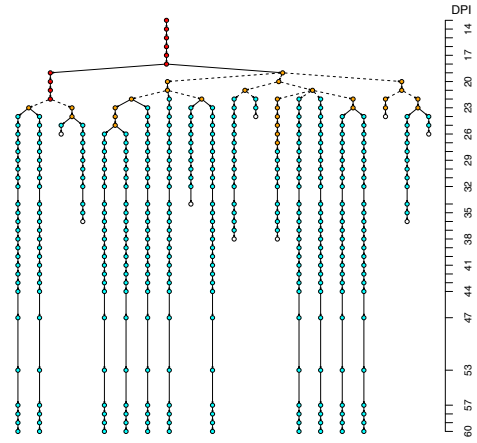
18.



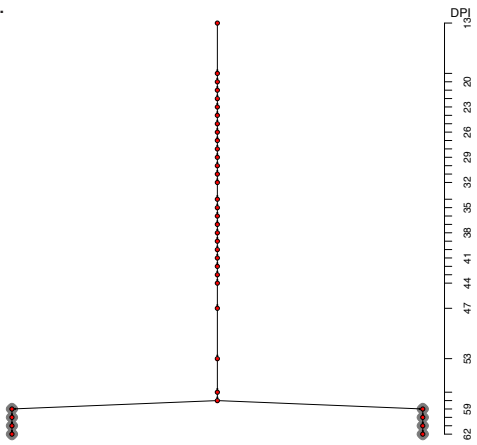
19.



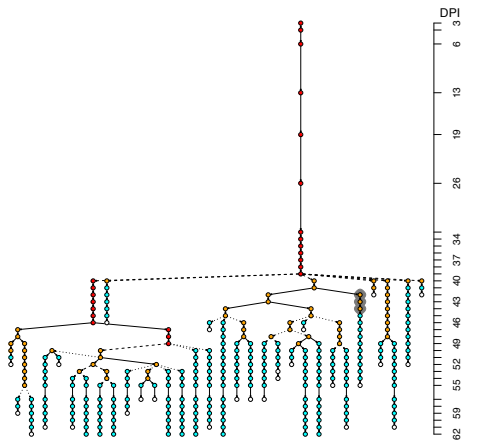
20.



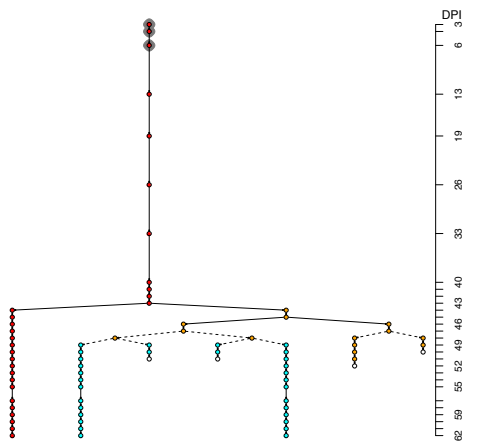
21.



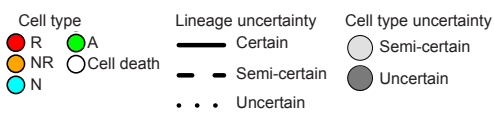
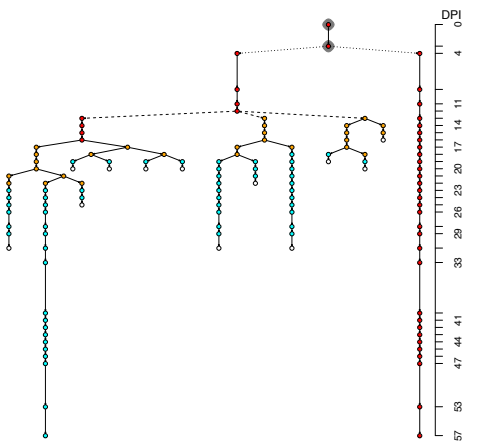
22.



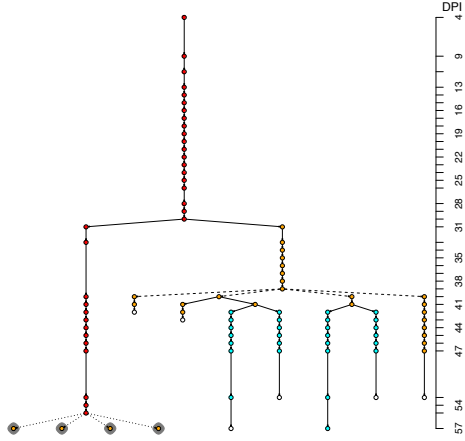
23.



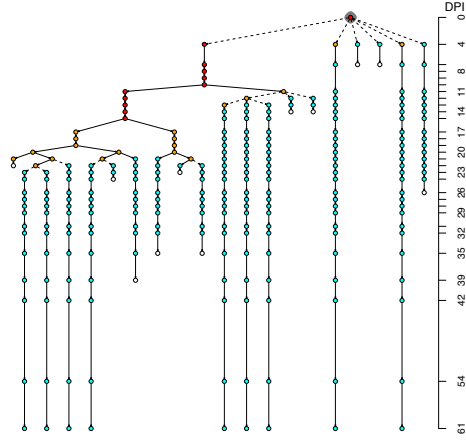
24.



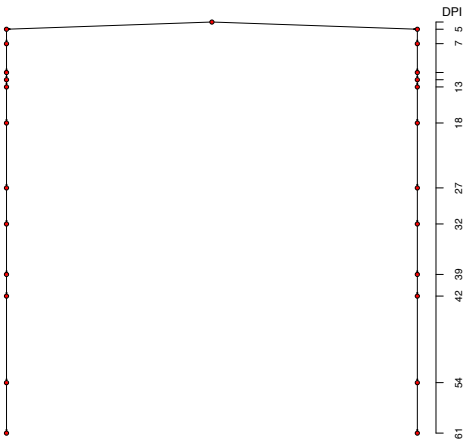
25.



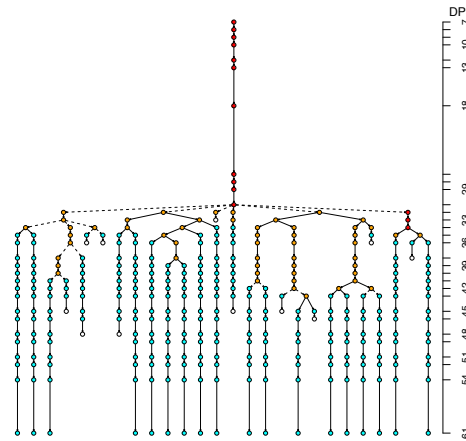
26.



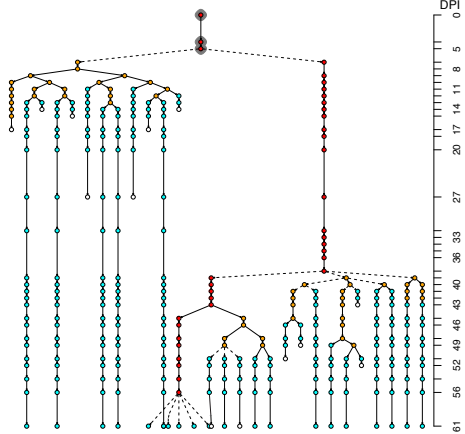
27.



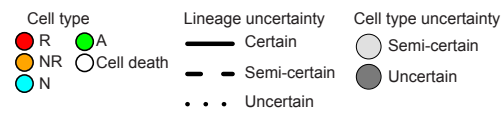
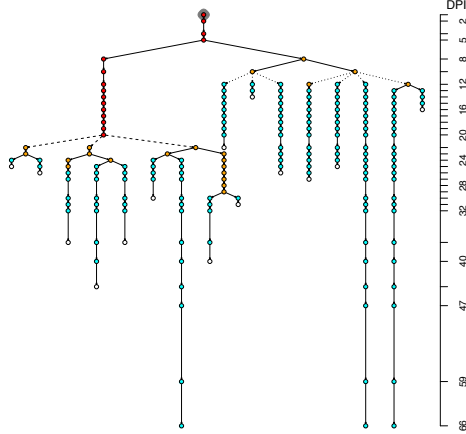
28.



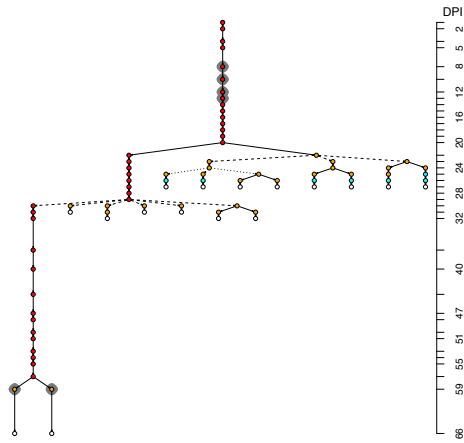
29.



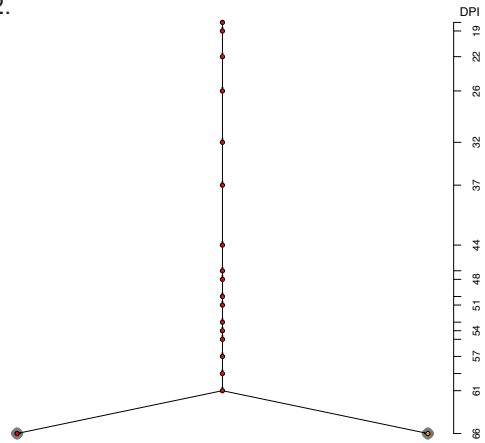
30.



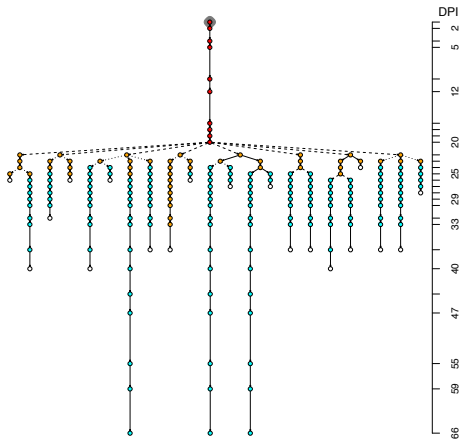
31.



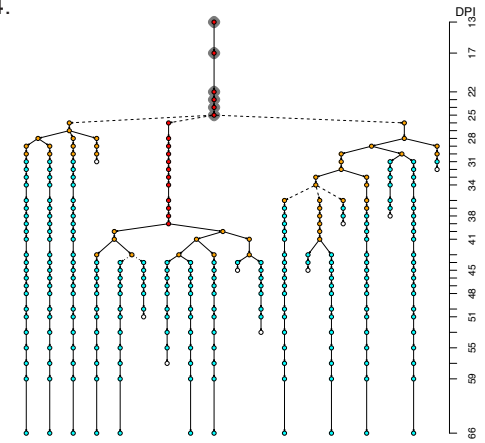
32.



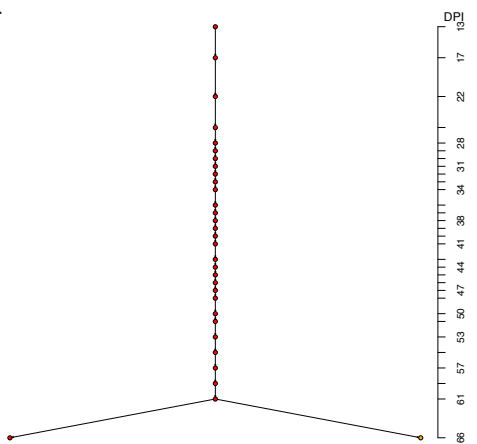
33.



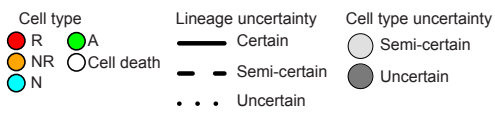
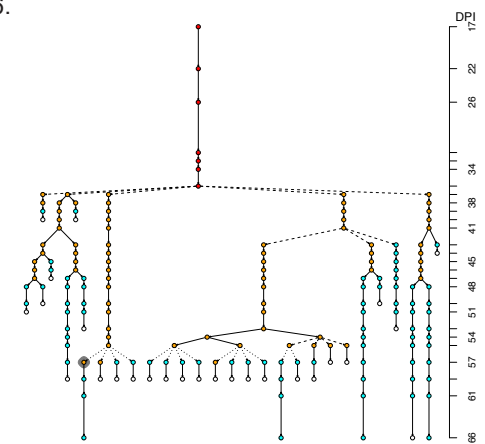
34.



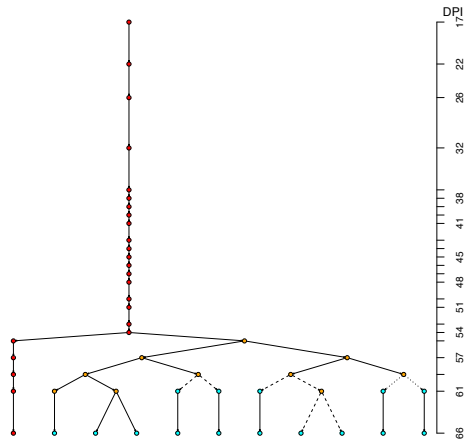
35.



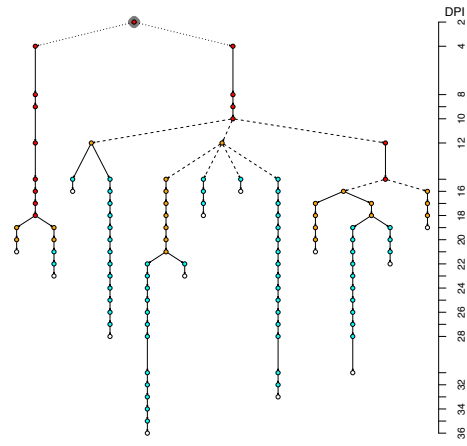
36.



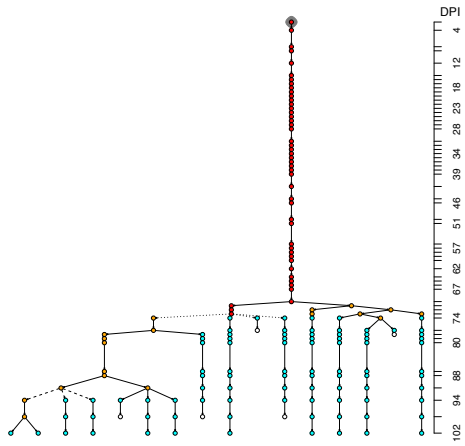
37.



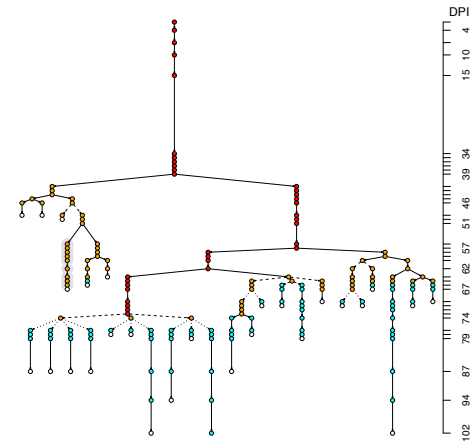
38.



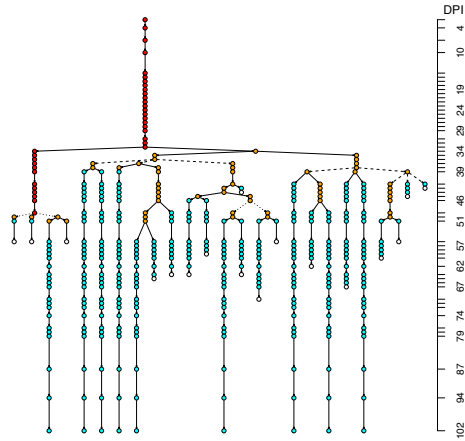
39.



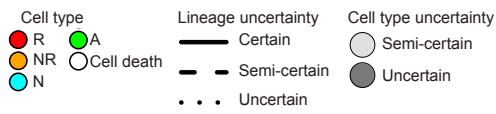
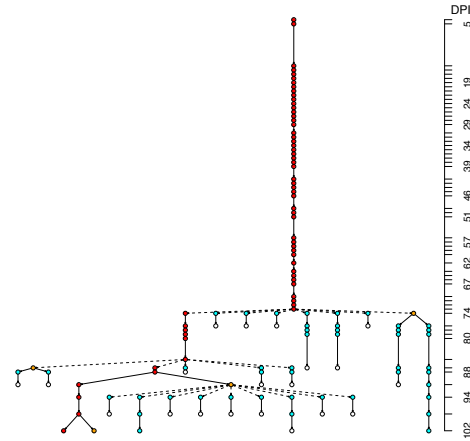
40.

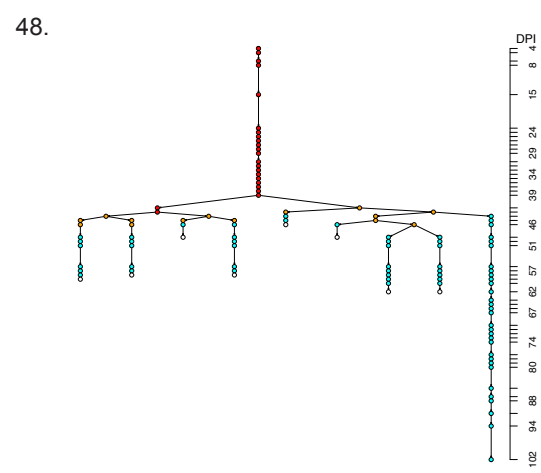
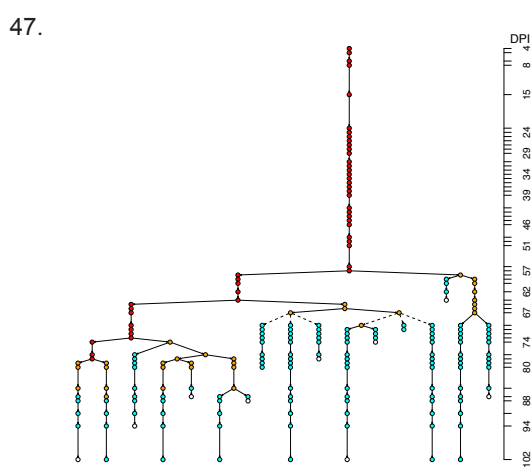
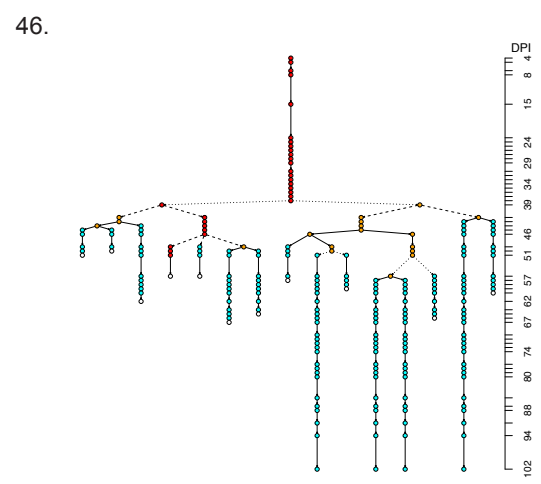
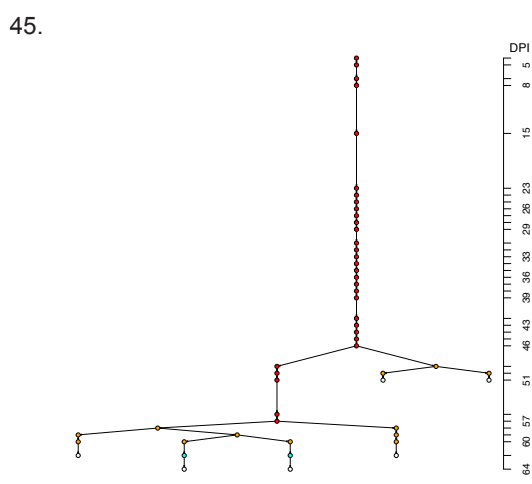
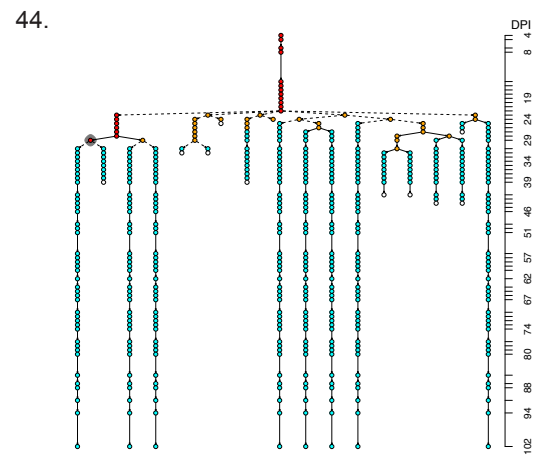
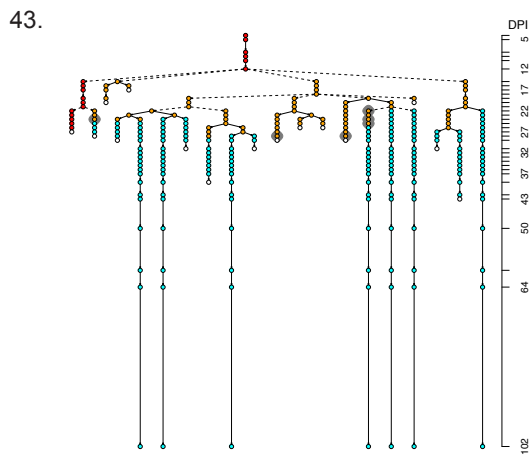


41.



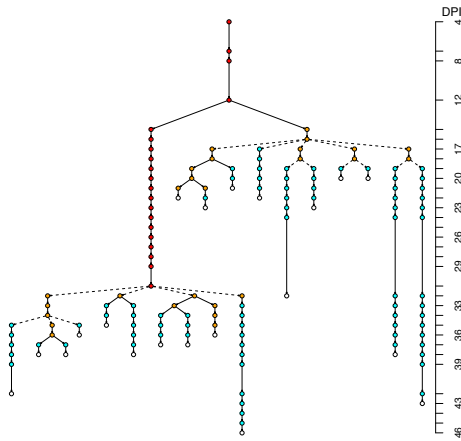
42.



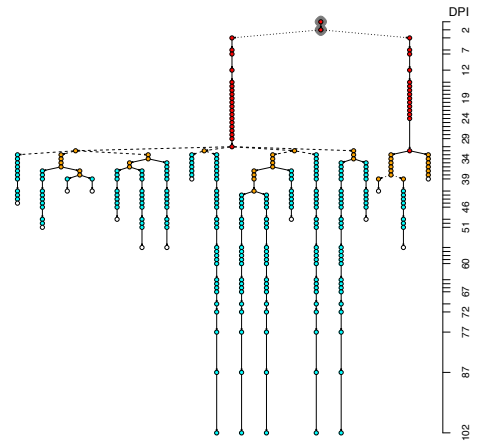


Cell type	Lineage uncertainty	Cell type uncertainty
● R	— Certain	○ Semi-certain
● NR	- - - Semi-certain	● Uncertain
● N	⋯ Uncertain	
○ Cell death		

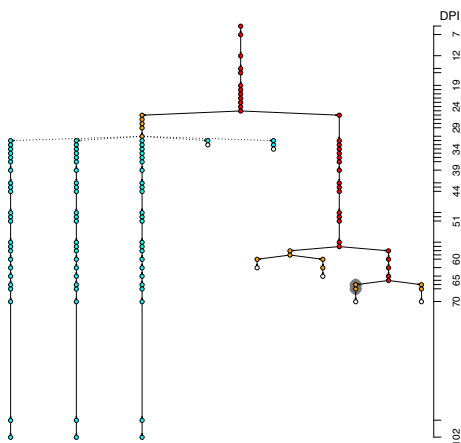
49.



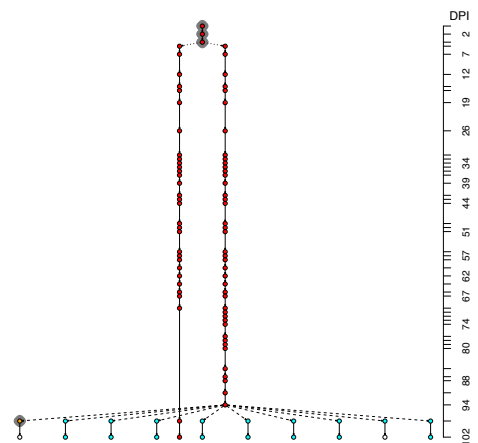
50.



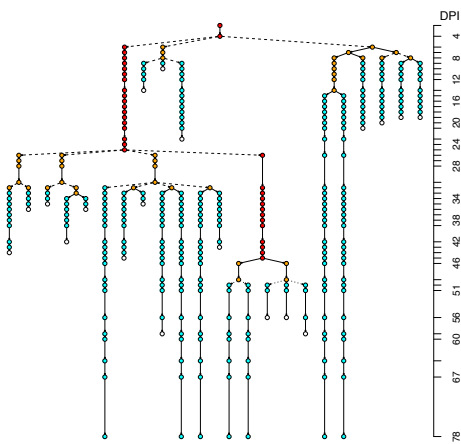
51.



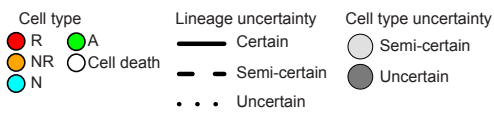
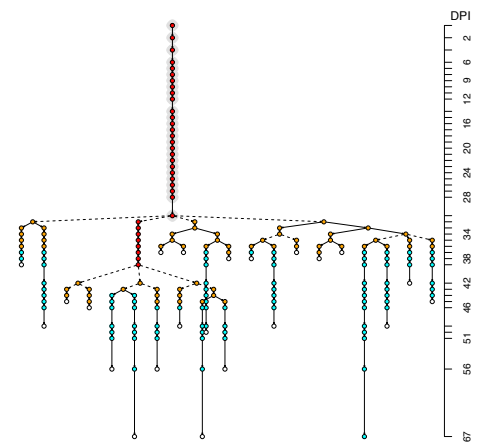
52.

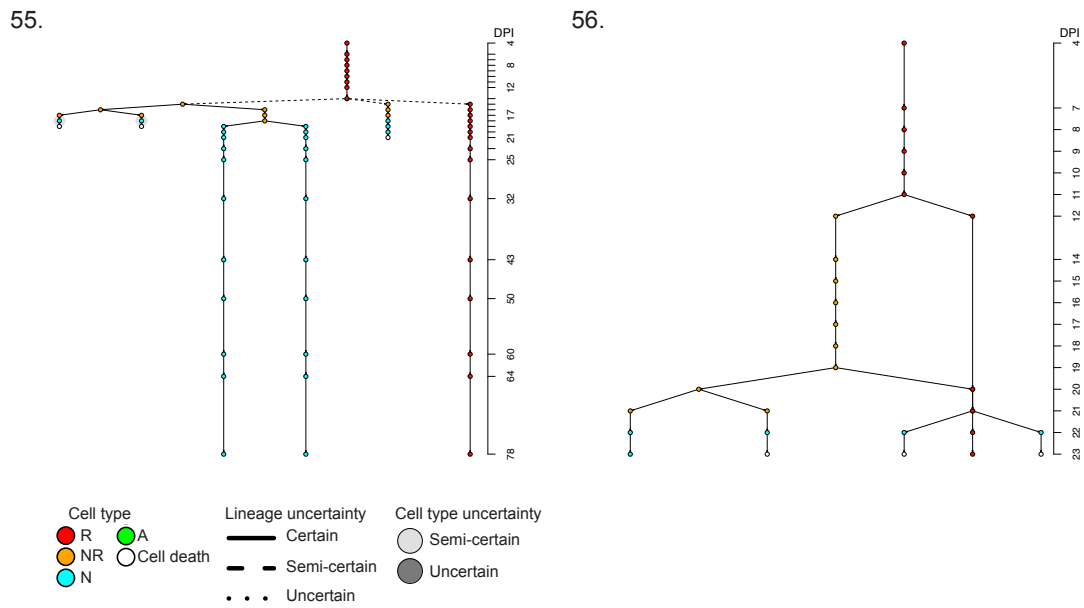


53.



54.





Supplementary Figure 1. Lineage trees of Gli1-tdTomato-labeled active NSCs.

Lineage trees resulting from the tracking of individual R cell lineages in Gli1-tdTomato mice (n = 56 lineage trees from 6 mice). Lineage trees of quiescent R cells are not shown (n = 80 lineage trees from 6 mice). A legend explaining color-coding for the different cell types (R cell, NR cell, Neuron, Astrocyte, Cell death), the degree of certainty for cell type classification (semi-certain, uncertain) and lineage transitions (certain, semi-certain and uncertain) is inserted on each page. Each circle in the lineage tree represents an imaging time point during which a z-stack has been taken, or during which the cellular composition of the clone has been closely observed and the unchanged situation has been noted down. The timescale on the right (days) indicates the course of the imaging and events within the lineage tree can be related to it.