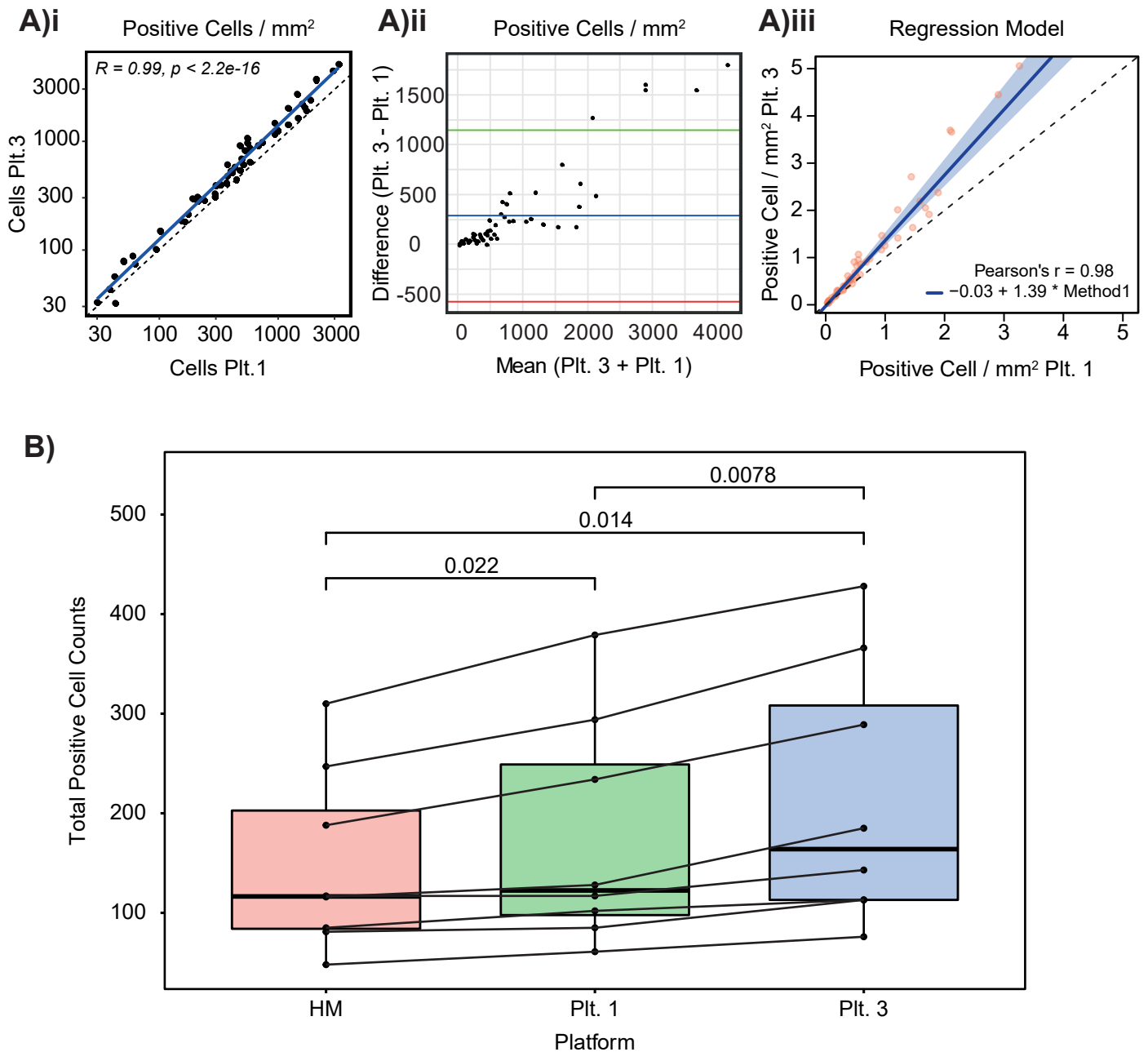


## Supplemental Figure 1



**Figure S1. Comparison of digital platforms and histomorphometrist scoring**

- A)i** Pearson's correlation coefficient comparing Platform-1 and Platform-3 values for positive cells/mm<sup>2</sup> counted across 56 NSCLC PDEs.
- A)ii** Bland-Altman plot comparing positive cells/mm<sup>2</sup> as determined by Platform-1 and Platform-3. The blue line indicates mean difference between positive counts, the green and red lines illustrate the upper and lower limits of agreement based on 95% CIs, respectively.
- A)iii** Passing-Bablok regression model illustrates a proportional difference in positive cells/mm<sup>2</sup> between Platform-1 and Platform-3.
- B)** Comparison of total positive cells counted within 8 FoVs by a histomorphometrist, Platform-1 and Platform-3. Wilcoxon paired test was performed for each comparison, with  $p < 0.05$  considered significantly different