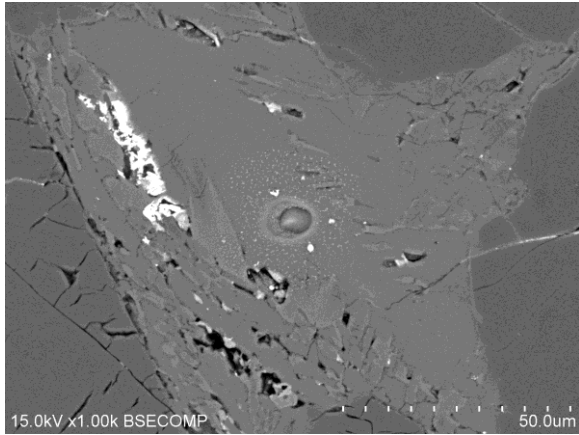


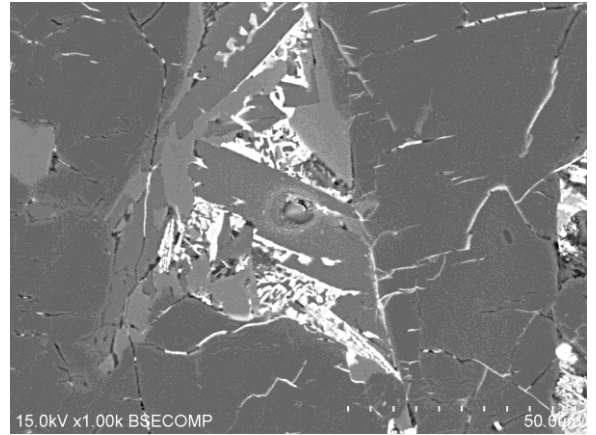
Data S7

Documentation of SIMS
pits (plagioclase)

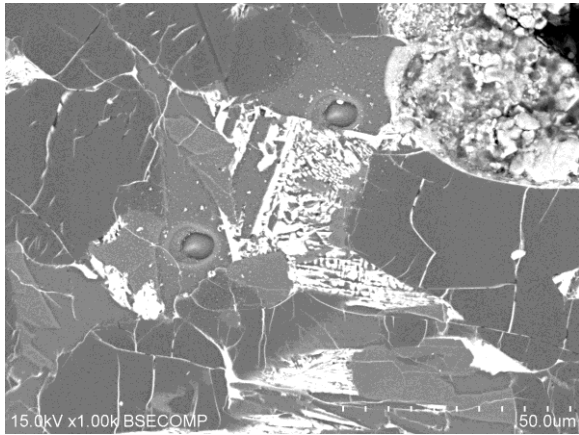
Analysis	Ch#	Chondrite
K1: 19.pl	1	Kaba 1052-1
$\delta^{17}\text{O}$	$\delta^{18}\text{O}$	$\Delta^{17}\text{O}$ ‰
6.41	14.69	-1.23



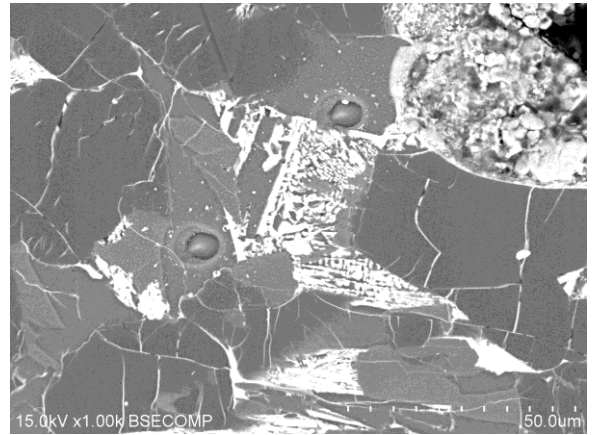
Analysis	Ch#	Chondrite
K1: 20.pl (excl.)	1	Kaba 1052-1
$\delta^{17}\text{O}$	$\delta^{18}\text{O}$	$\Delta^{17}\text{O}$ ‰
4.20	10.42	-1.22



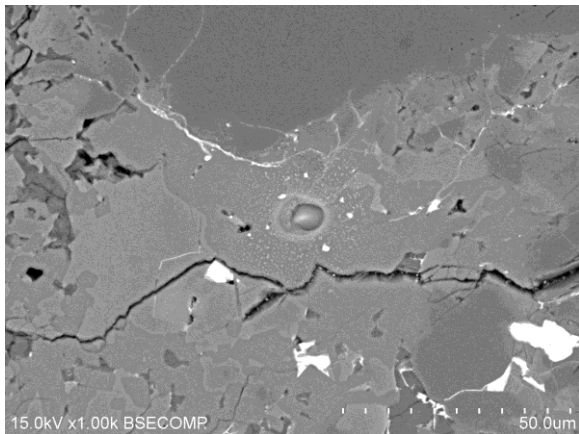
Analysis	Ch#	Chondrite
K1: 21.pl (upper)	1	Kaba 1052-1
$\delta^{17}\text{O}$	$\delta^{18}\text{O}$	$\Delta^{17}\text{O}$ ‰
1.77	6.51	-1.62



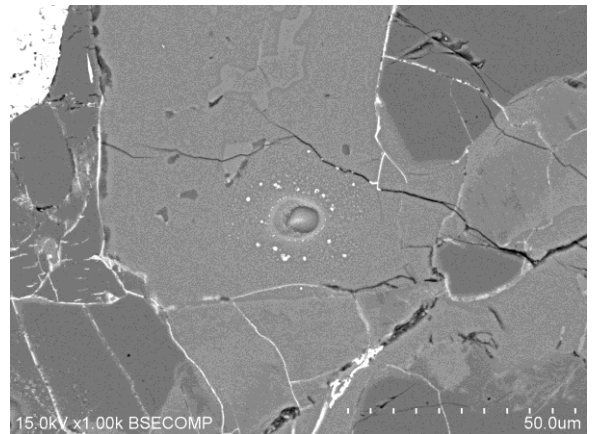
Analysis	Ch#	Chondrite
K1: 22.pl (lower)	1	Kaba 1052-1
$\delta^{17}\text{O}$	$\delta^{18}\text{O}$	$\Delta^{17}\text{O}$ ‰
5.25	11.86	-0.92



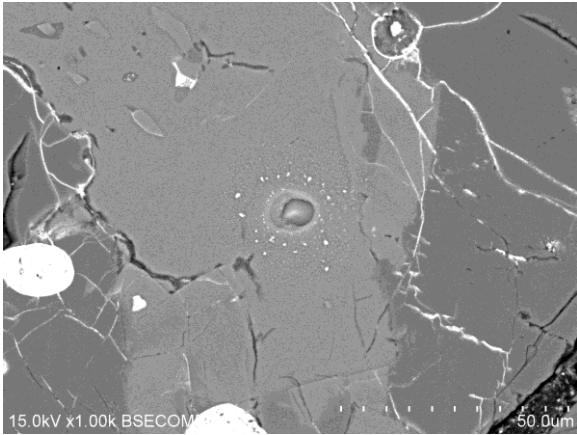
Analysis	Ch#	Chondrite
K3: 23.pl	3	Kaba 1052-1
$\delta^{17}\text{O}$	$\delta^{18}\text{O}$	$\Delta^{17}\text{O}$ ‰
6.35	14.18	-1.02



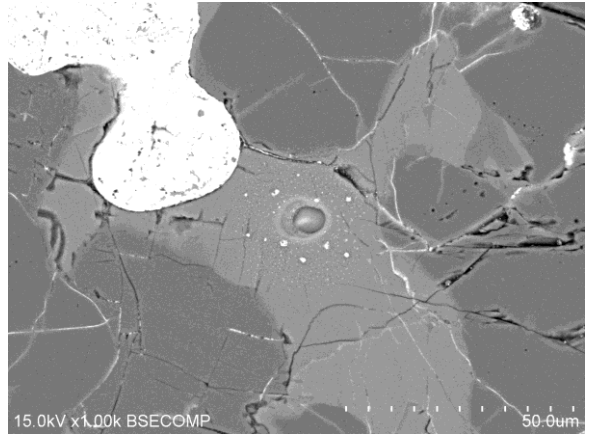
Analysis	Ch#	Chondrite
K5: 24.pl	5	Kaba 1052-1
$\delta^{17}\text{O}$	$\delta^{18}\text{O}$	$\Delta^{17}\text{O}$ ‰
6.71	14.40	-0.78



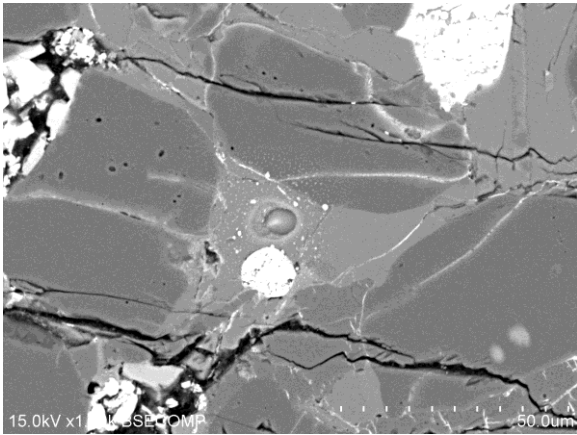
Analysis	Ch#	Chondrite
K5: 25.pl	5	Kaba 1052-1
$\delta^{17}\text{O}$	$\delta^{18}\text{O}$	$\Delta^{17}\text{O}$ ‰
6.84	14.63	-0.76



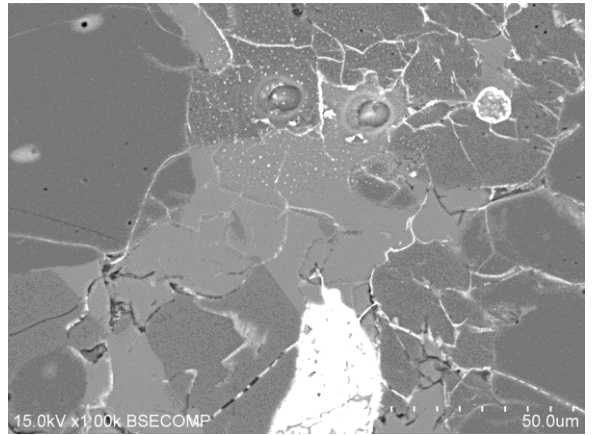
Analysis	Ch#	Chondrite
K5: 26.pl	5	Kaba 1052-1
$\delta^{17}\text{O}$	$\delta^{18}\text{O}$	$\Delta^{17}\text{O}$ ‰
6.64	14.42	-0.85



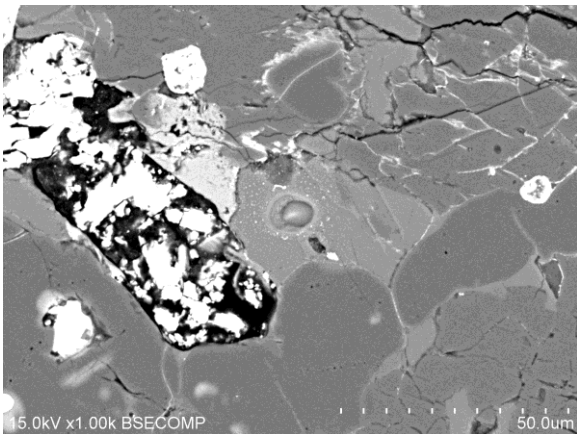
Analysis	Ch#	Chondrite
K8+9: 28.pl	K8+9	Kaba 1052-1
$\delta^{17}\text{O}$	$\delta^{18}\text{O}$	$\Delta^{17}\text{O}$ ‰
6.77	14.43	-0.73



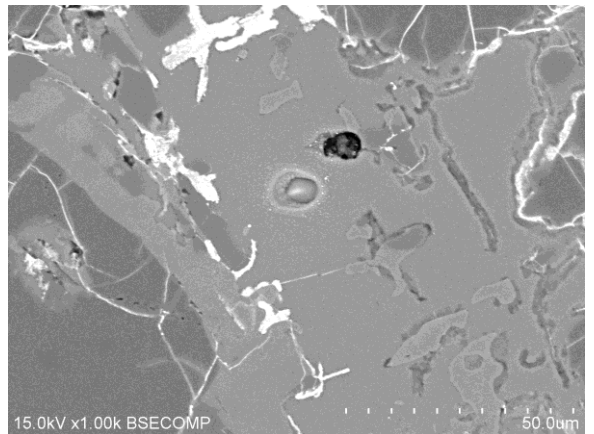
Analysis (right pit)	Ch#	Chondrite
K8+9: 29.pl (excl.)	K8+9	Kaba 1052-1
$\delta^{17}\text{O}$	$\delta^{18}\text{O}$	$\Delta^{17}\text{O}$ ‰
7.18	15.07	-0.66



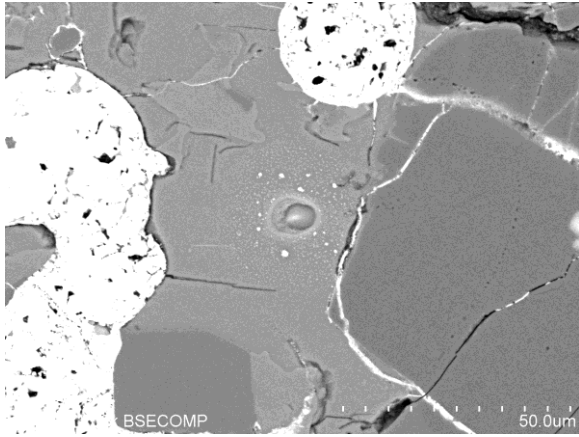
Analysis	Ch#	Chondrite
K8+9: 30.pl	K8+9	Kaba 1052-1
$\delta^{17}\text{O}$	$\delta^{18}\text{O}$	$\Delta^{17}\text{O}$ ‰
6.13	13.70	-0.99



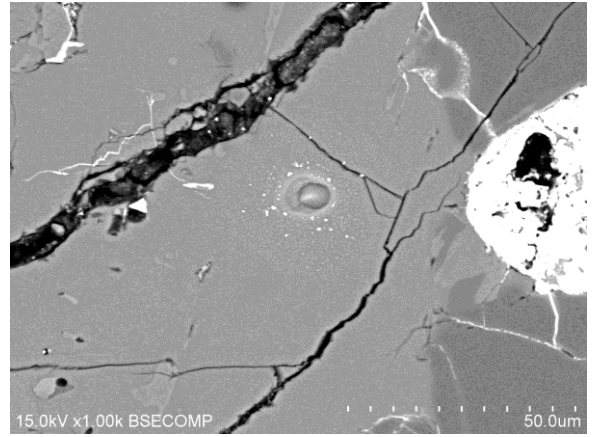
Analysis	Ch#	Chondrite
K10: 31.pl	10	Kaba 1052-1
$\delta^{17}\text{O}$	$\delta^{18}\text{O}$	$\Delta^{17}\text{O}$ ‰
5.84	13.41	-1.14



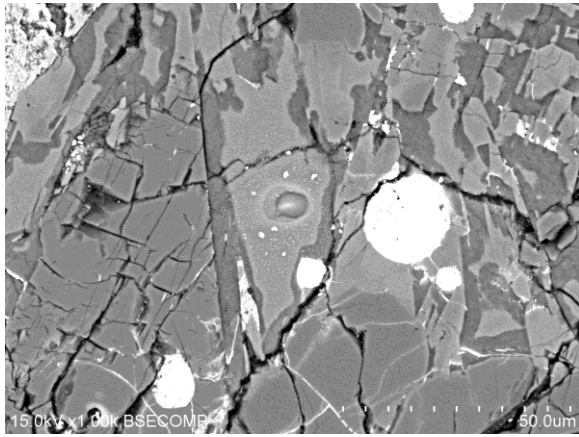
Analysis	Ch#	Chondrite
K10: 32.pl	10	Kaba 1052-1
$\delta^{17}\text{O}$	$\delta^{18}\text{O}$	$\Delta^{17}\text{O}$ ‰
5.40	12.78	-1.24



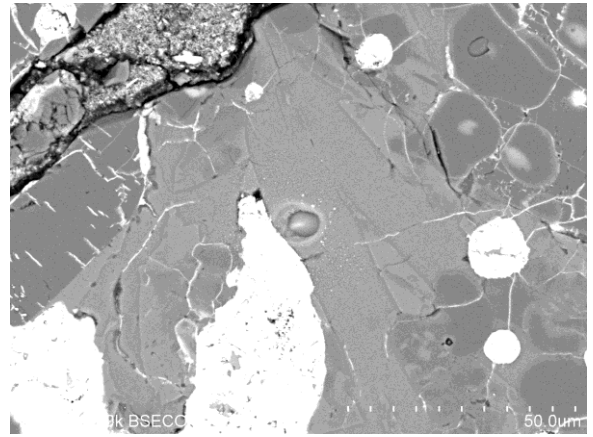
Analysis	Ch#	Chondrite
K10: 33.pl	10	Kaba 1052-1
$\delta^{17}\text{O}$	$\delta^{18}\text{O}$	$\Delta^{17}\text{O}$ ‰
6.87	14.94	-0.90



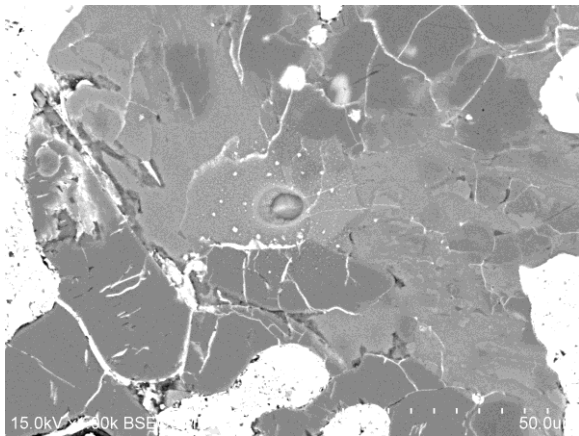
Analysis	Ch#	Chondrite
K21: 34.pl	21	Kaba 1052-1
$\delta^{17}\text{O}$	$\delta^{18}\text{O}$	$\Delta^{17}\text{O}$ ‰
7.25	15.03	-0.56



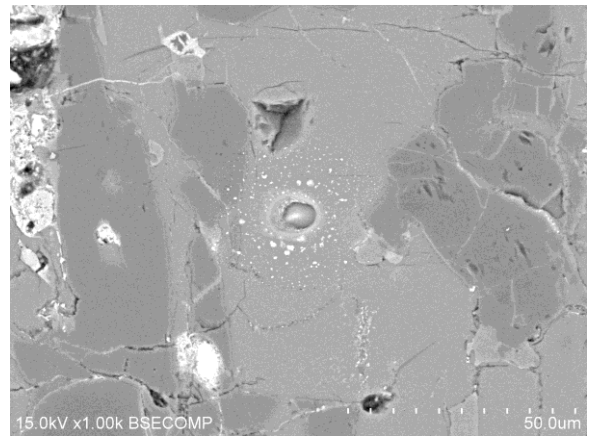
Analysis	Ch#	Chondrite
K24: 35.pl	24	Kaba 1052-1
$\delta^{17}\text{O}$	$\delta^{18}\text{O}$	$\Delta^{17}\text{O}$ ‰
6.97	15.07	-0.86



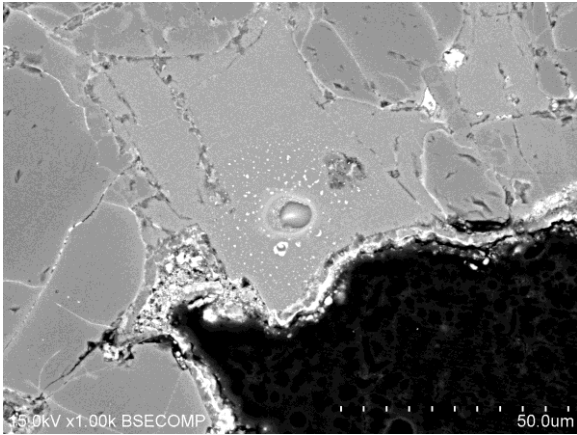
Analysis	Ch#	Chondrite
K24: 36.pl	24	Kaba 1052-1
$\delta^{17}\text{O}$	$\delta^{18}\text{O}$	$\Delta^{17}\text{O}$ ‰
5.21	12.31	-1.20



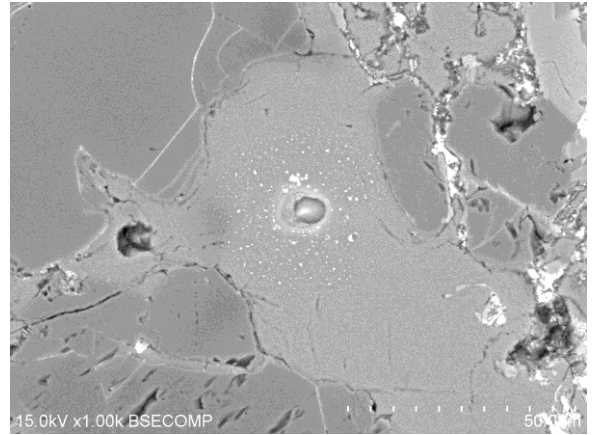
Analysis	Ch#	Chondrite
N3: 41.pl	3	NWA8613
$\delta^{17}\text{O}$	$\delta^{18}\text{O}$	$\Delta^{17}\text{O}$ ‰
-0.95	5.07	-3.58



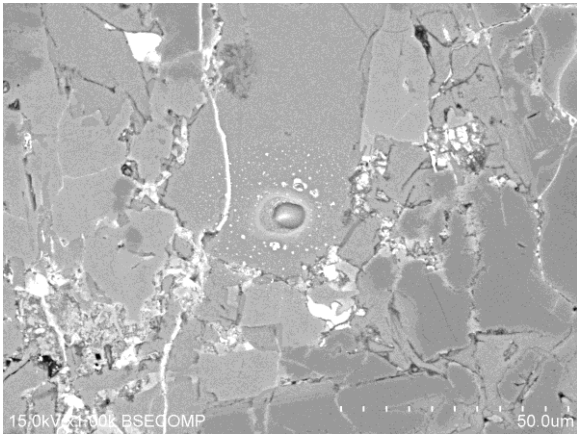
Analysis	Ch#	Chondrite
N3: 42.pl	3	NWA8613
$\delta^{17}\text{O}$	$\delta^{18}\text{O}$	$\Delta^{17}\text{O}$ ‰
1.72	9.41	-3.17



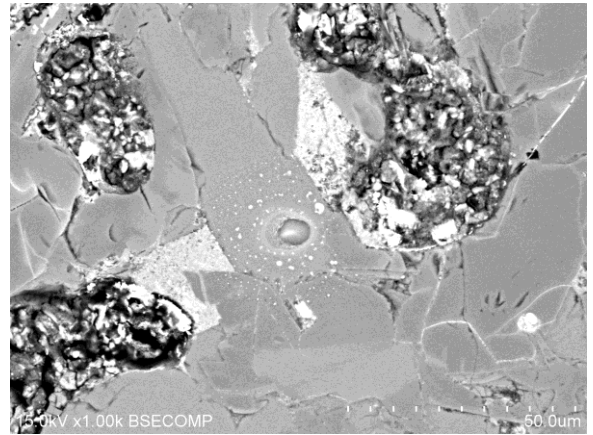
Analysis	Ch#	Chondrite
N3: 43.pl	3	NWA8613
$\delta^{17}\text{O}$	$\delta^{18}\text{O}$	$\Delta^{17}\text{O}$ ‰
0.32	6.03	-2.81



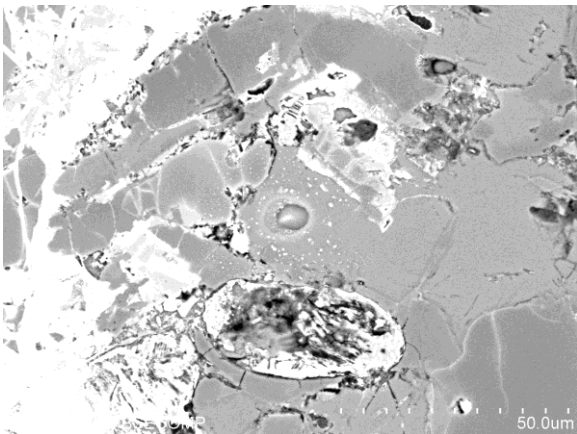
Analysis	Ch#	Chondrite
N3: 44.pl	3	NWA8613
$\delta^{17}\text{O}$	$\delta^{18}\text{O}$	$\Delta^{17}\text{O}$ ‰
4.53	11.74	-1.57



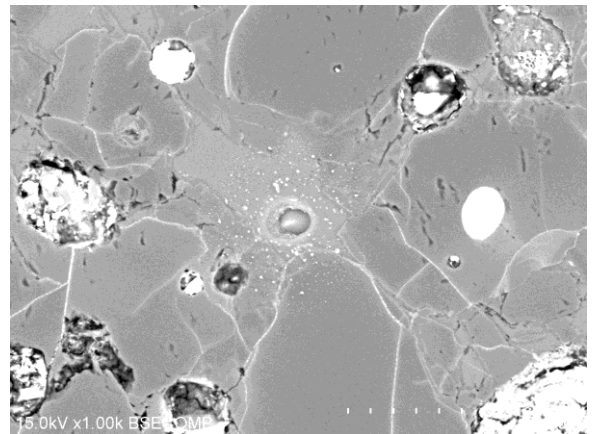
Analysis	Ch#	Chondrite
N4: 45.pl	4	NWA8613
$\delta^{17}\text{O}$	$\delta^{18}\text{O}$	$\Delta^{17}\text{O}$ ‰
4.13	11.82	-2.02



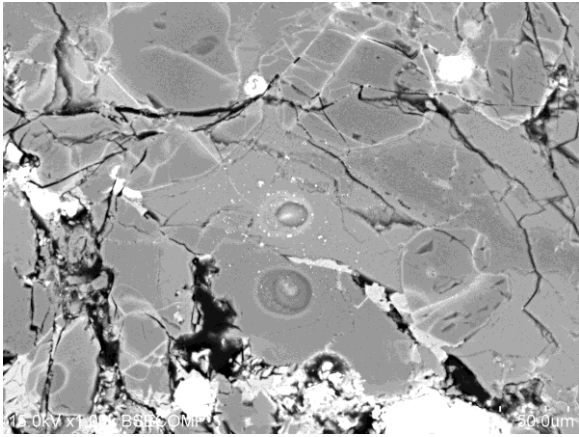
Analysis	Ch#	Chondrite
N4: 46.pl	4	NWA8613
$\delta^{17}\text{O}$	$\delta^{18}\text{O}$	$\Delta^{17}\text{O}$ ‰
5.18	13.00	-1.58



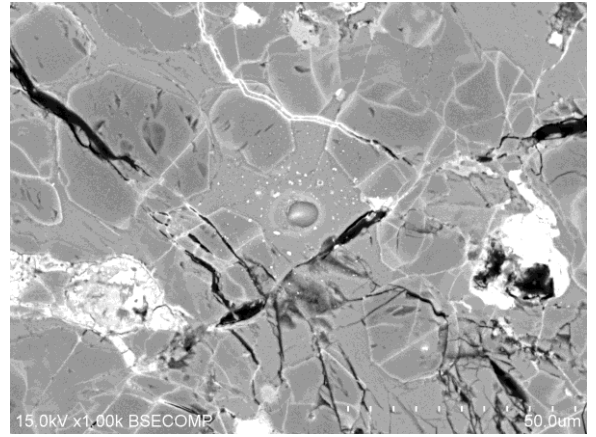
Analysis	Ch#	Chondrite
N4: 47.pl	4	NWA8613
$\delta^{17}\text{O}$	$\delta^{18}\text{O}$	$\Delta^{17}\text{O}$ ‰
3.89	11.66	-2.18



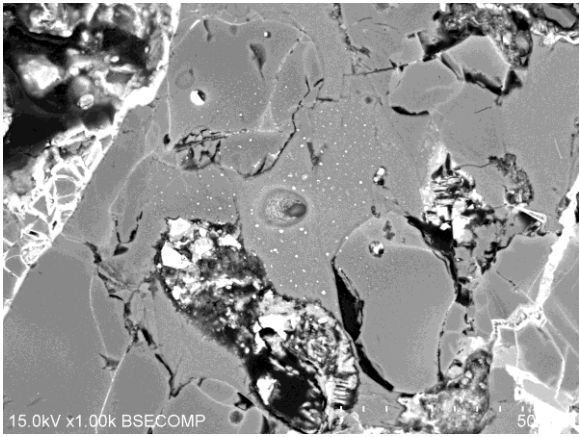
Analysis	Ch#	Chondrite	
N11: 48.pl (upper)	11	NWA8613	
$\delta^{17}\text{O}$	$\delta^{18}\text{O}$	$\Delta^{17}\text{O}$	‰
6.03	14.03	-1.26	



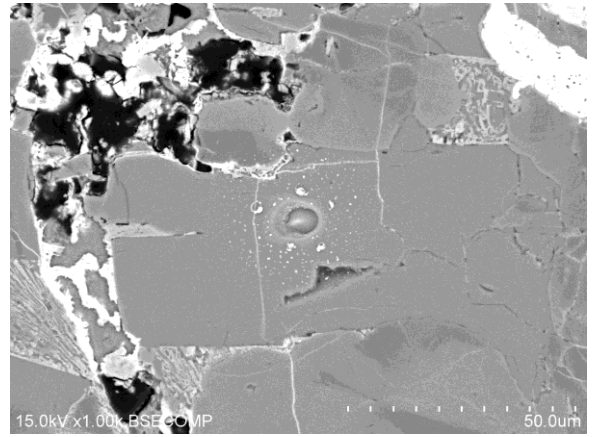
Analysis	Ch#	Chondrite	
N11: 49.pl	11	NWA8613	
$\delta^{17}\text{O}$	$\delta^{18}\text{O}$	$\Delta^{17}\text{O}$	‰
6.01	14.08	-1.31	



Analysis	Ch#	Chondrite	
N17: 50.pl	17	NWA8613	
$\delta^{17}\text{O}$	$\delta^{18}\text{O}$	$\Delta^{17}\text{O}$	‰
5.58	13.83	-1.62	



Analysis	Ch#	Chondrite	
N21: 51.pl	21	NWA8613	
$\delta^{17}\text{O}$	$\delta^{18}\text{O}$	$\Delta^{17}\text{O}$	‰
2.13	8.73	-2.41	



Analysis	Ch#	Chondrite	
N21: 52.pl (upper)	21	NWA8613	
$\delta^{17}\text{O}$	$\delta^{18}\text{O}$	$\Delta^{17}\text{O}$	‰
1.26	7.13	-2.44	

