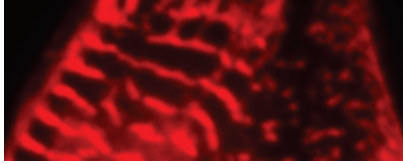
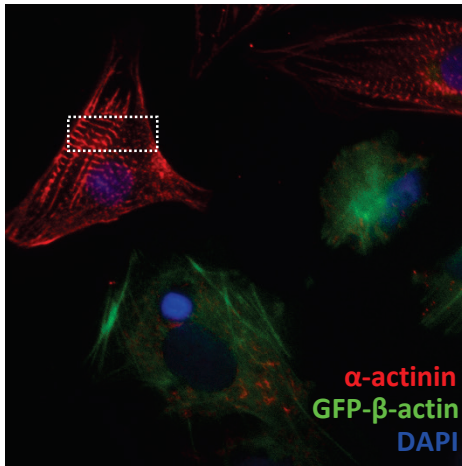
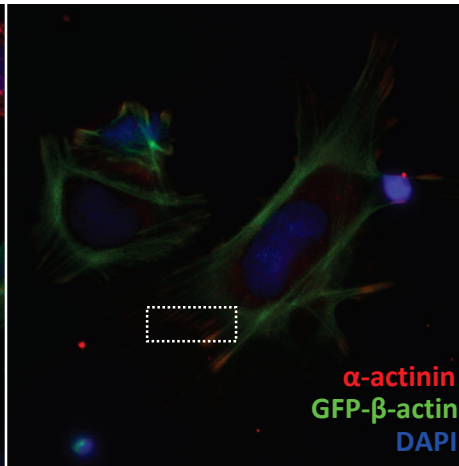
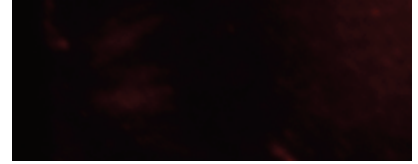
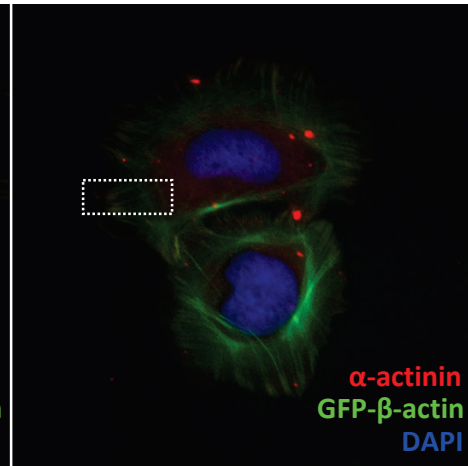
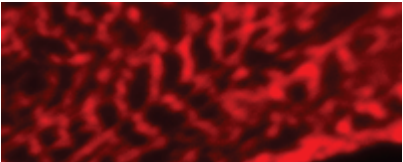
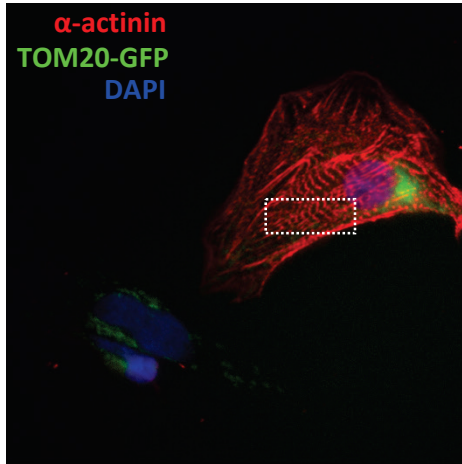
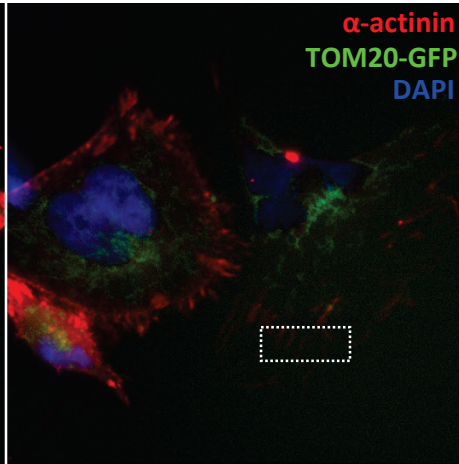
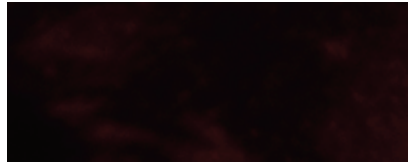
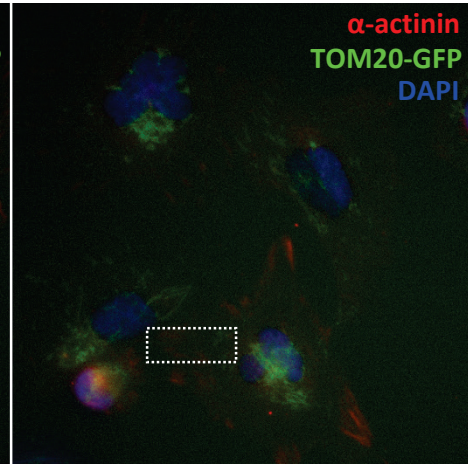


A: AICS16 GiWi**B: AICS16 + IMR90 med Δ** **C: AICS16 med Δ** **D: AICS11 GiWi****E: AICS11 + IMR90 med Δ** **F: AICS11 med Δ** 

S3 Fig. Staining of AICS16 (GFP- β -actin) and AICS11 (TOM20-GFP) cells for sarcomeric α -actinin. AICS16 or AICS11 cells were differentiated using (A,D) GiWi protocol, or (B,E) co-cultured with IMR90 iPS cells, and (C,F) basal media change alone (absent differentiation factors). Bottom panels show a magnified image of α -actinin staining for the area bounded by white rectangles.