

Community-acquired Hospital-acquired

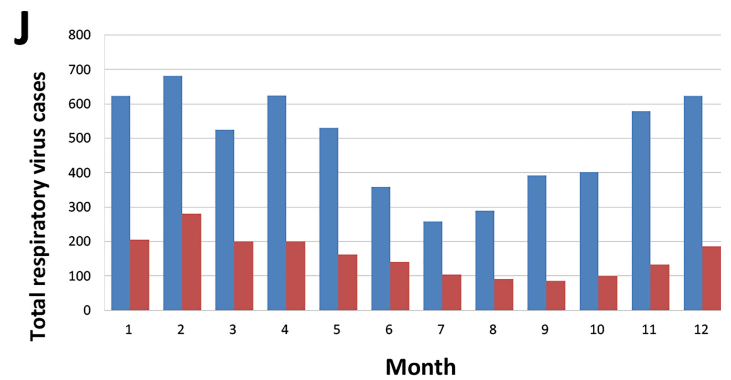
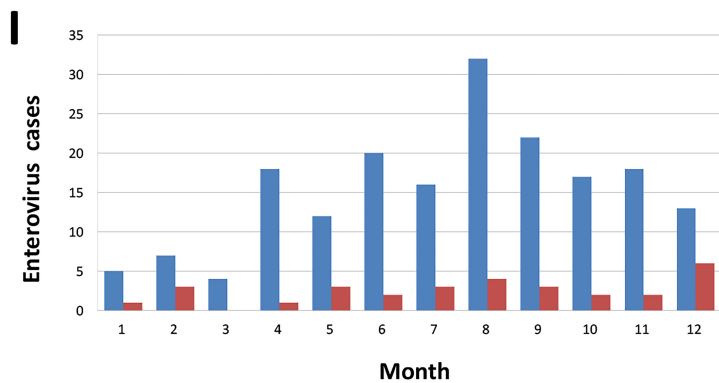
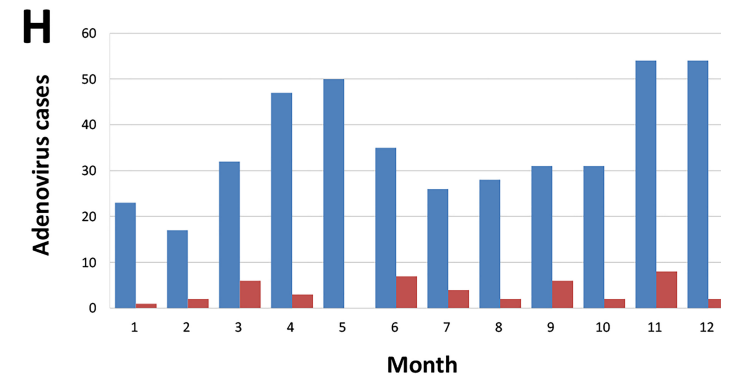
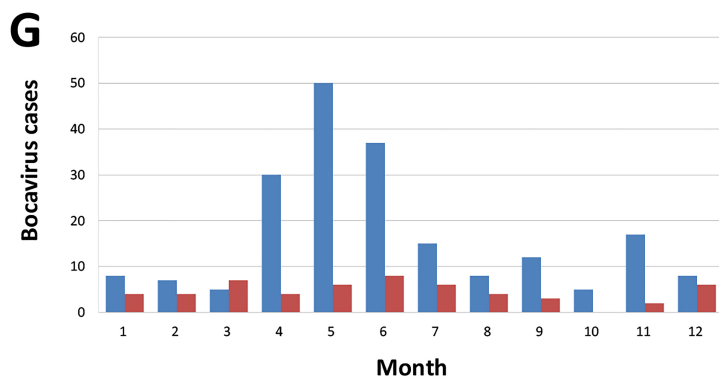
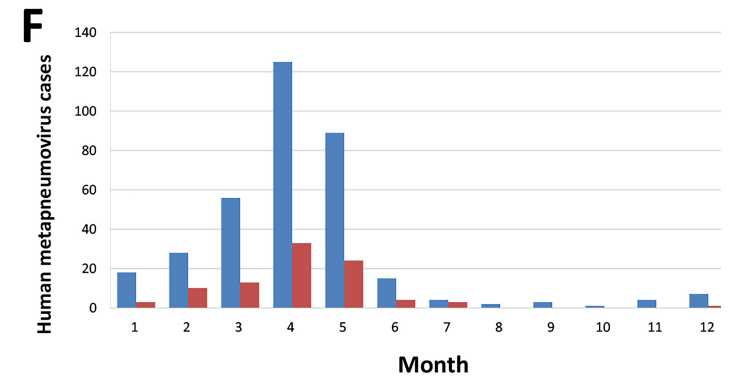
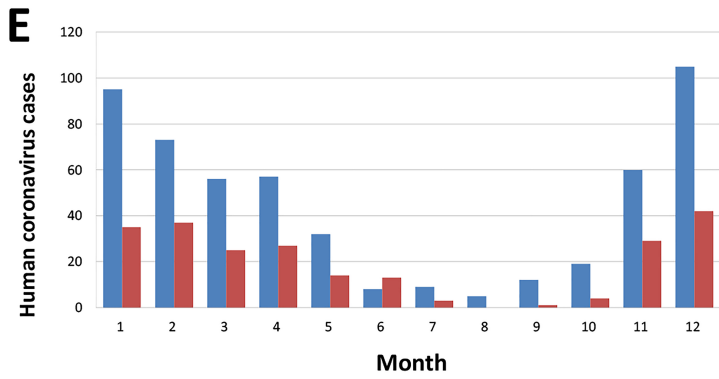
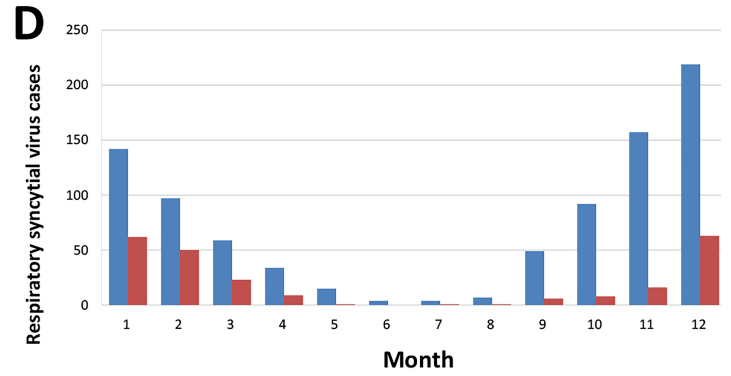
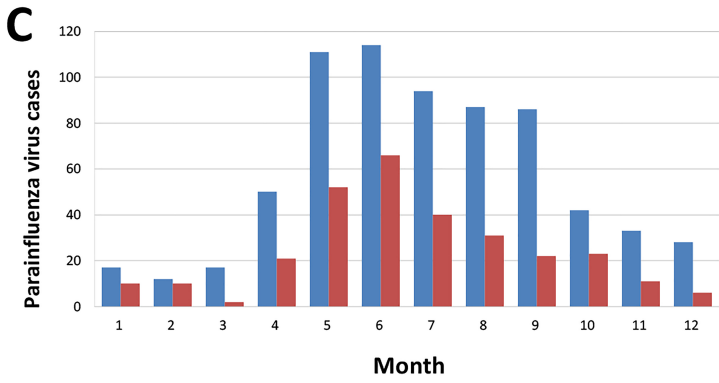
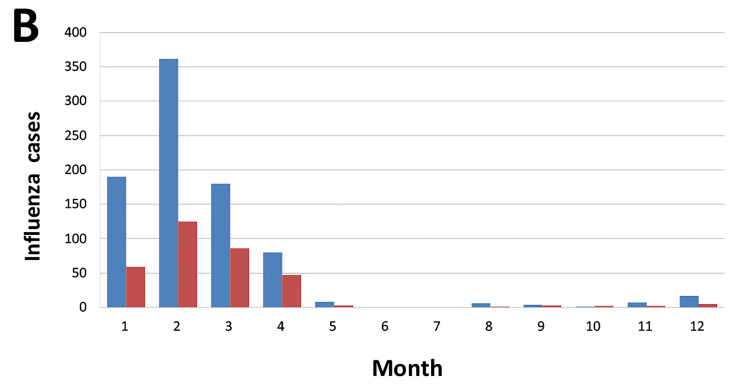
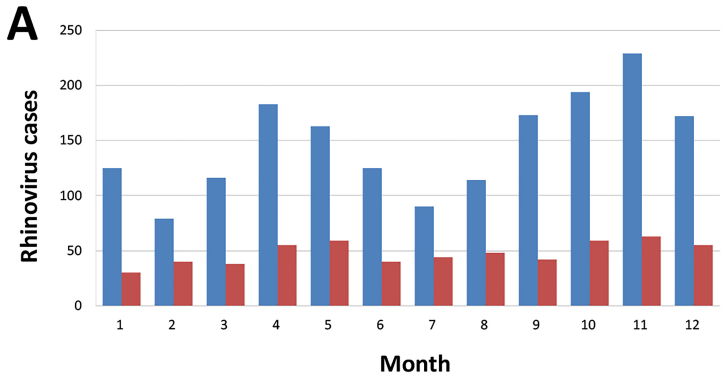


FIGURE LEGENDS

Supplementary Figure 1. The seasonal distribution of hospital-acquired respiratory viruses among hospitalized patients was similar to that of community-acquired infection. (A) Rhinovirus, (B) Influenza virus, (C) Parainfluenza virus, (D) Respiratory syncytial virus, (E) Human coronavirus OC43/HKU-1 or 229E/NL63, (F) Human metapneumovirus, (G) Bocavirus, (H) Adenovirus, (I) Enterovirus, (J) Total respiratory virus