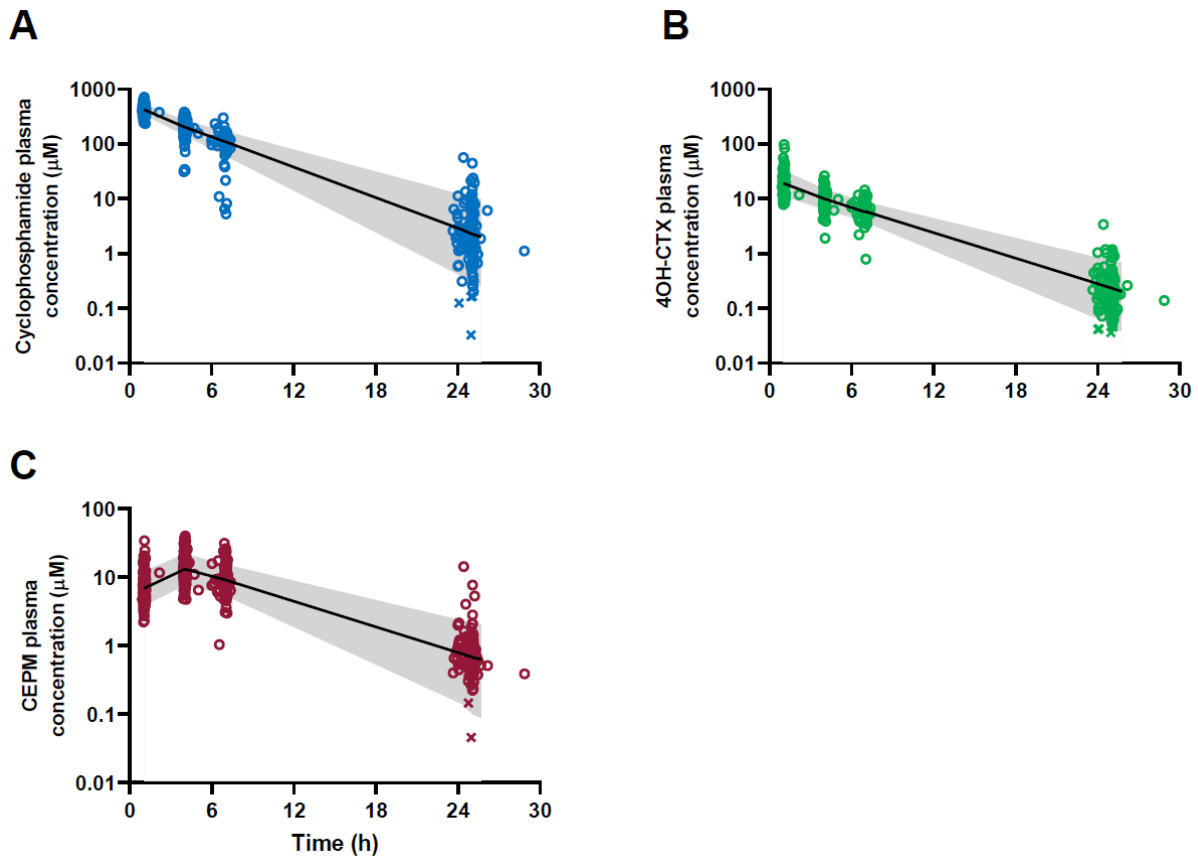


Figure S4. Visual predictive checks of the pharmacokinetic base model for cyclophosphamide (A), 4OH-CTX (B), and CEPM (C).



In each graph, open-circles are the observed concentration-time data, and crosses are the concentrations below the limit of quantification. Solid lines represent the 50th percentile of the model simulations. Shaded gray areas represent the 90% prediction interval (5th–95th percentiles) of the model simulations. The central tendency and the variability of cyclophosphamide, 4OH-CTX, and CEPM concentrations were well predicted by the pharmacokinetic model.