

## Supplementary Data

### **5'-O-Masked 2'-deoxyadenosine analogues as lead compounds for hepatitis C virus (HCV) therapeutic agents**

Masahiro Ikejiri<sup>a</sup>, Takayuki Ohshima<sup>a</sup>, Keizo Kato<sup>a</sup>, Masaaki Toyama<sup>a</sup>, Takayuki Murata<sup>b</sup>,  
Kunitada Shimotohno<sup>b</sup> and Tokumi Maruyama<sup>a,\*</sup>

*<sup>a</sup>Faculty of Pharmaceutical Sciences at Kagawa Campus, Tokushima Bunri University,  
1314-1 Shido, Sanuki, Kagawa 769-2193, Japan*

*<sup>b</sup>Department of Viral Oncology, Institute for Virus Research, Kyoto University, Sakyo-ku,  
Kyoto 606-8507, Japan*

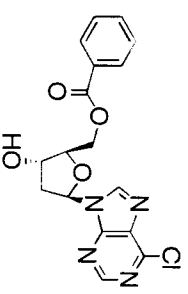
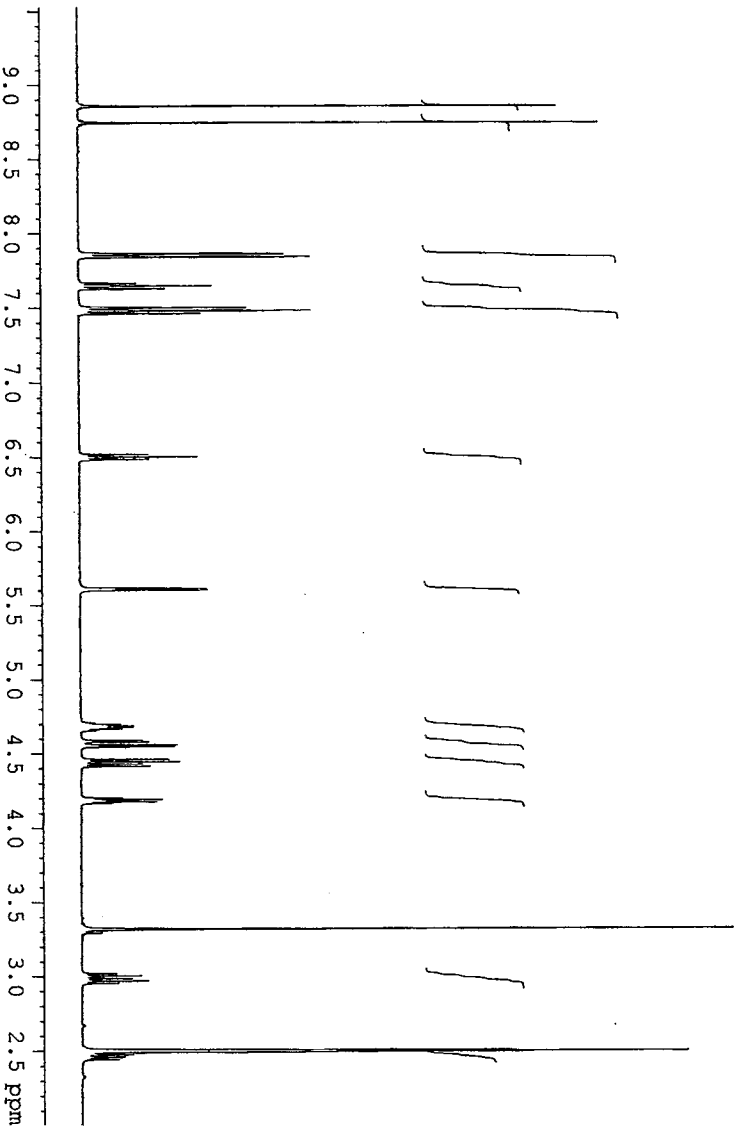
The <sup>1</sup>H and <sup>13</sup>C NMR spectra of compounds **10**, **12**, **15–21**, **24**, **25**, **27–30**, **34**, **36–38** and **41**.

8.855  
8.743  
7.864  
7.861  
7.848  
7.843  
7.840  
7.665  
7.662  
7.651  
7.647  
7.643  
7.632  
7.628  
7.625  
7.501  
7.497  
7.480  
7.466  
7.462  
6.516  
6.500  
6.484  
5.613  
5.602  
4.695  
4.683  
4.668  
4.588  
4.578  
4.558  
4.548  
4.460  
4.445  
4.430  
4.415  
4.202  
4.191  
4.188  
4.181  
4.177  
3.019  
3.003  
2.987  
2.985  
2.969  
2.954  
2.509  
2.491  
2.477  
2.473  
2.461  
2.456  
2.443

Current Data Parameters  
NAME 070704  
EXPNO 2  
PROCNO 1

F2 - Acquisition Parameters  
Date\_ 20070704  
Time\_ 19.11  
INSTRUM 5 mm Multinuc1  
PROBHD zgpg30  
PULPROG zg30  
TD 65536  
SOLVENT DMSO  
NS 8  
DS 2  
SWH 8278.146 Hz  
FIDRES 0.126314 Hz  
AQ 3.9584243 sec  
RG 512  
DM 60.400 usec  
DE 6.50 usec  
TE 298.1 K  
D1 1.00000000 sec  
TDO 1

CHANNEL f1  
NUC1 1H  
P1 15.00 usec  
PL 0.50 dB  
SFO1 400.1324710 MHz  
F2 - Processing parameters  
SI 32768  
SF 400.1300020 MHz  
WDW EM  
SSB 0  
LB 0.30 Hz  
GB 0  
PC 1.00



Compound 10

**BRUKER**

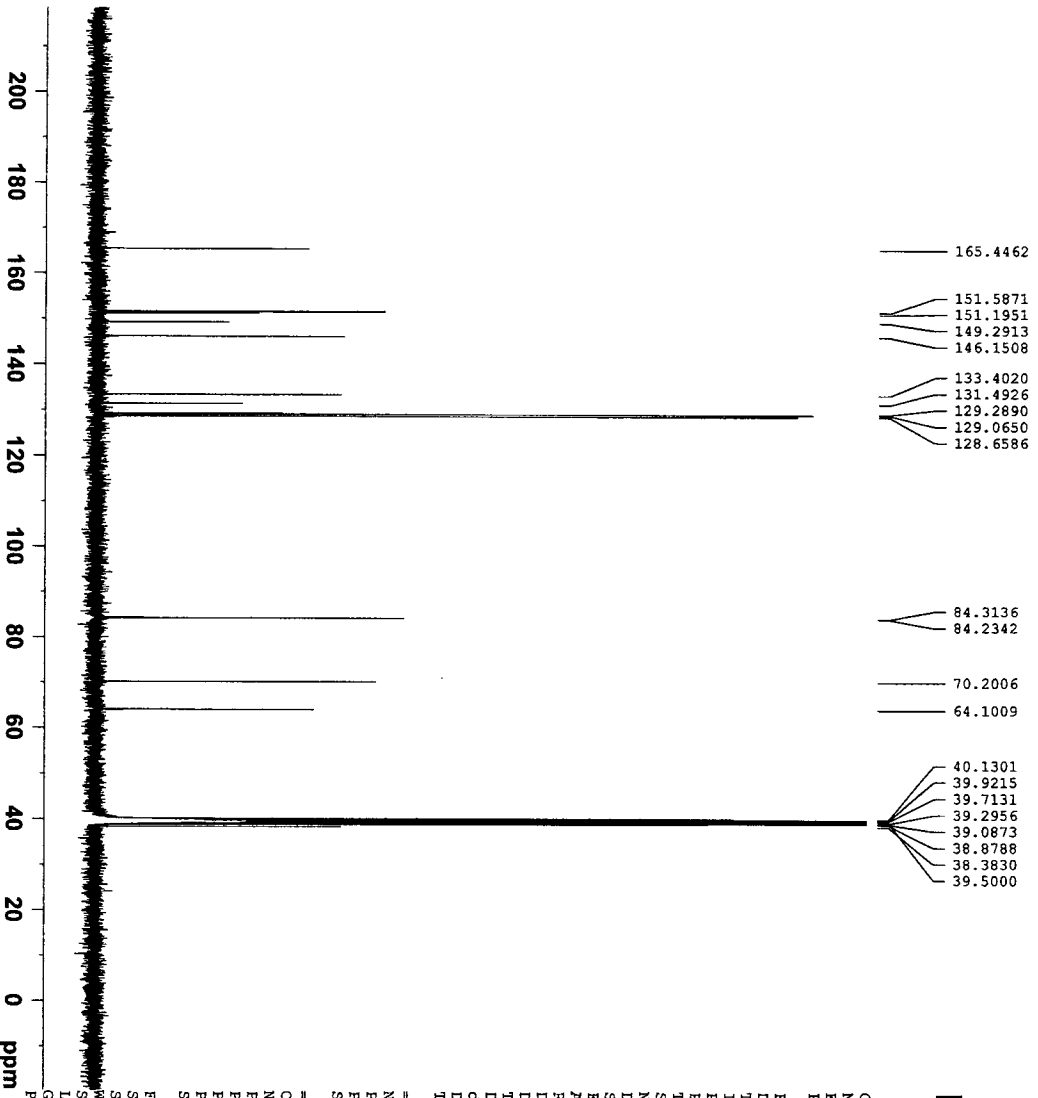
Current Data Parameters  
NAME YK607BCM  
EXPNO 1  
PROCNO 1

F2 - Acquisition Parameters  
Date\_ 20070215  
Time\_ 13.41  
INSTRUM av400  
PROBHD 5 mm PABBO-BB-  
PULPROG zgpg30  
TD 65536  
SOLVENT DMSO  
NS 1360  
DS 2  
SWH 23980.814 Hz  
FIDRES 0.365918 Hz  
AQ 1.3664756 sec  
RG 32768  
DM 20.850 usec  
DE 20.00 usec  
TE 297.0 K  
D1 2.00000000 sec  
d11 0.03000000 sec  
DELTA 1.89999998 sec  
TDO 1

CHANNEL f1  
NUC1 13C  
P1 9.50 usec  
PL -0.50 dB  
SFO1 100.6479773 MHz

CHANNEL f2  
waitz16  
NUC2 1H  
PCPDRG2 80.00 usec  
PCFDR2 0.00 dB  
PLI2 15.00 dB  
PLI3 15.00 dB  
SFO2 400.2316009 MHz

F2 - Processing parameters  
SI 32768  
SF 100.6379619 MHz  
WDW EM  
SSB 0  
LB 1.00 Hz  
GB 0  
PC 1.40

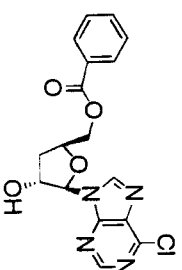




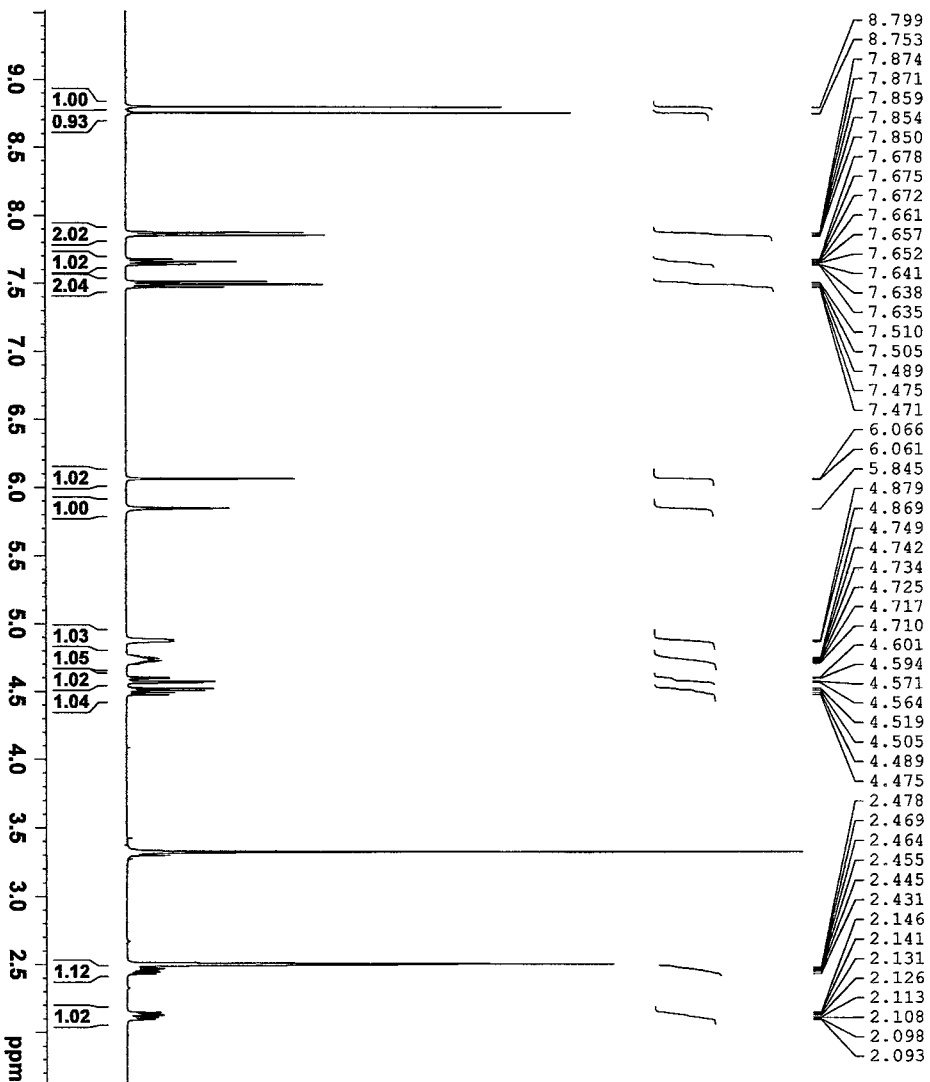
Current Data Parameters  
 NAME 070707  
 EXPNO 1  
 PROCNO 1

F2 - Acquisition Parameters  
 Date\_ 20070707  
 Time 11.17  
 INSTRUM av400  
 PROBHD 5 mm PABBO BB-  
 PULPROG zg30  
 TD 65536  
 SOLVENT DMSO  
 NS 8  
 DS 2  
 SWH 8278.146 Hz  
 FIDRES 0.126314 Hz  
 AQ 3.9584243 sec  
 RG 574.7  
 DE 60.400 usec  
 TE 297.5 K  
 DL 1.0000000 sec  
 TDO 1

CHANNEL f1  
 NUCL1 1H  
 P1 14.00 usec  
 PL1 0.00 dB  
 SFO1 400.2324716 MHz  
 F2 - Processing parameters  
 SI 32768  
 SF 400.2295973 MHz  
 WDW EM  
 SSB 0  
 LB 0.30 Hz  
 GB 0  
 PC 1.00



Compound 12



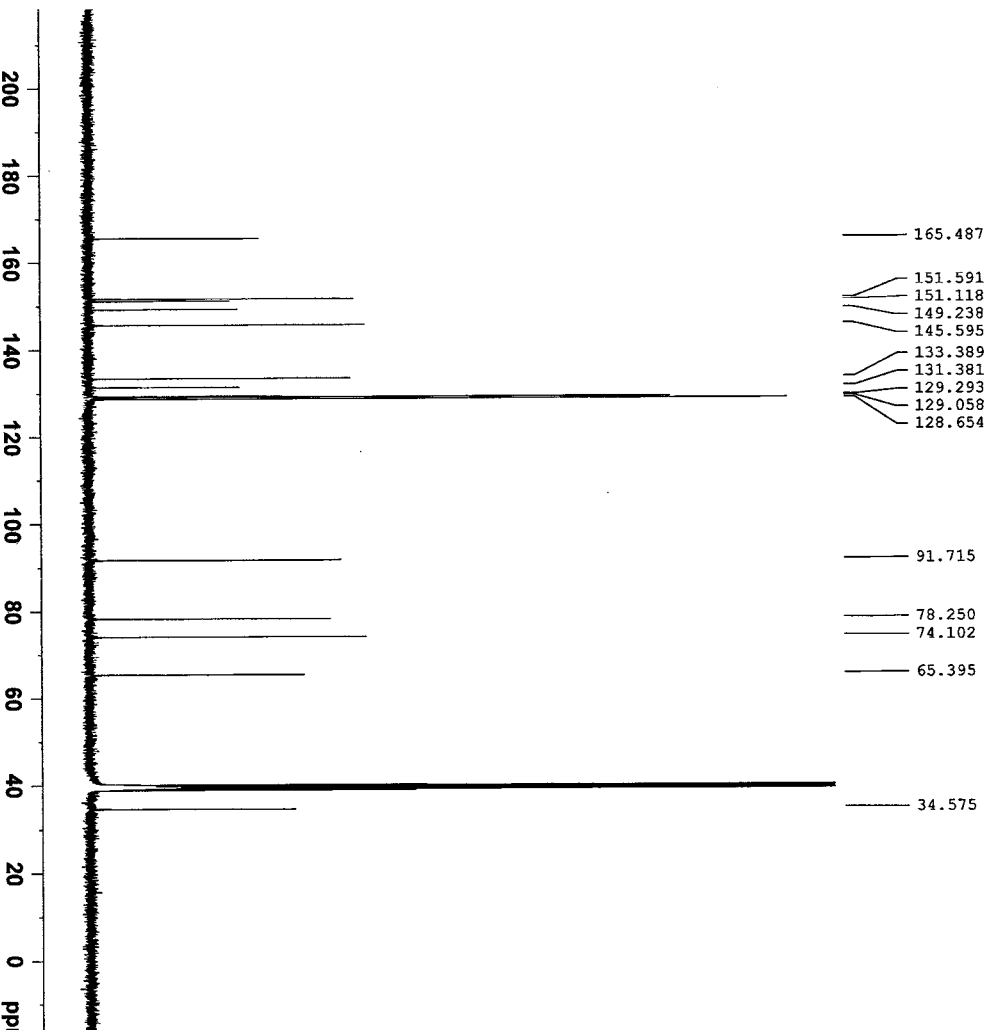
Current Data Parameters  
 NAME 070627  
 EXPNO 2  
 PROCNO 1

F2 - Acquisition Parameters  
 Date\_ 20070627  
 Time 17.15  
 INSTRUM av400  
 PROBHD 5 mm Multinuc1  
 PULPROG zgpg30  
 TD 65536  
 SOLVENT DMSO  
 NS 1360  
 DS 2  
 SWH 23980.814 Hz  
 FIDRES 0.365918 Hz  
 AQ 1.3664756 sec  
 RG 26008  
 DW 20.850 usec  
 DE 20.00 usec  
 TE 673.2 K  
 DL1 2.0000000 sec  
 DL2 0.0300000 sec  
 DELTA 1.8999998 sec  
 TDO 1

CHANNEL f1  
 NUCL1 13C  
 P1 9.50 usec  
 PL1 -2.00 dB  
 SFO1 100.6228298 MHz

CHANNEL f2  
 CPDPRG2 waltz16  
 NUCL2 1H  
 EPCPD2 80.00 usec  
 PL12 15.00 dB  
 PL13 15.00 dB  
 PL2 0.00 dB  
 SFO2 400.1316005 MHz

F2 - Processing parameters  
 SI 32768  
 SF 100.6128192 MHz  
 WDW EM  
 SSB 0  
 LB 1.00 Hz  
 GB 0  
 PC 1.40

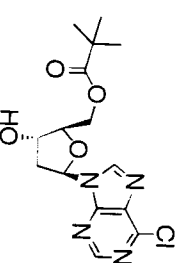
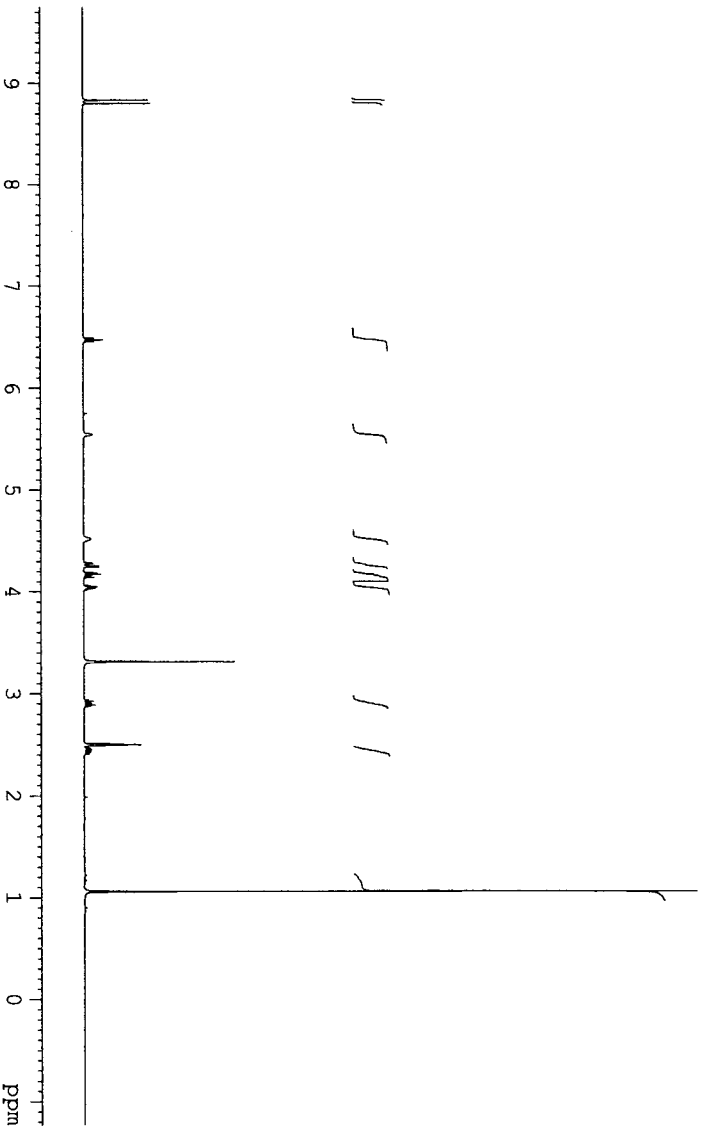


8.836  
8.803  
6.490  
6.474  
6.458  
5.548  
5.541  
4.517  
4.287  
4.276  
4.257  
4.246  
4.188  
4.173  
4.158  
4.143  
4.058  
4.047  
4.043  
4.036  
4.032  
4.021  
3.313  
2.939  
2.924  
2.906  
2.890  
2.874  
2.509  
2.505  
2.500  
2.496  
2.491  
2.471  
2.459  
2.454  
2.442  
2.438  
2.425  
2.420  
2.408  
1.060

Current Data Parameters  
NAME 060922  
EXNO 1  
PROCNO 1

F2 - Acquisition Parameters  
Date\_ 20060922  
Time 9.43  
INSTRUM av400  
PROBHD 5 mm Multinuc1  
PULPROG zg30  
TD 65536  
SOLVENT DMSO  
NS 8  
DS 2  
SWH 8278.146 Hz  
FIDRES 0.126314 Hz  
AQ 3.9584243 sec  
RG 562  
DW 60.400 usec  
DE 6.50 usec  
TE 299.4 K  
D1 1.00000000 sec  
TD0 1

==== CHANNEL f1 =====  
NUC1 1H  
P1 15.00 usec  
PL1 0.50 dB  
SFO1 400.1324710 MHz  
F2 - Processing parameters  
SI 32768  
SF 400.1300025 MHz  
WDW EM  
SSB 0  
LB 0.30 Hz  
GB 0  
PC 1.00



Compound 15

177.180  
151.628  
151.216  
149.271  
145.959  
131.487  
84.227  
84.119  
70.122  
63.572  
38.397  
38.126  
26.700

**BRUKER**

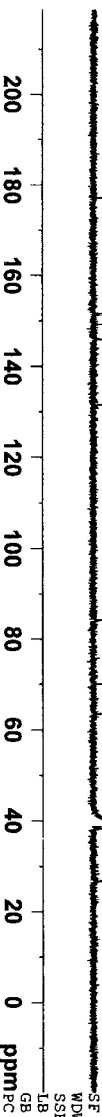
Current Data Parameters  
NAME 070508  
EXNO 1  
PROCNO 1

F2 - Acquisition Parameters  
Date\_ 20070508  
Time 13.43  
INSTRUM av400  
PROBHD 5 mm Multinuc1  
PULPROG zgpg30  
TD 65536  
SOLVENT DMSO  
NS 1600  
DS 2  
SWH 23980.814 Hz  
FIDRES 0.365918 Hz  
AQ 1.3664756 sec  
RG 26008  
DW 20.850 usec  
DE 20.00 usec  
TE 300.1 K  
D1 2.00000000 sec  
d11 0.03000000 sec  
DELTA 1.89999998 sec  
TD0 1

==== CHANNEL f1 =====  
NUC1 13C  
P1 9.50 usec  
PL1 -2.00 dB  
SFO1 100.6228298 MHz

==== CHANNEL f2 =====  
CPDPRG2 waltz16  
NUC2 1H  
ROPRD2 80.00 usec  
PL12 15.00 dB  
PL13 15.00 dB  
PL2 0.00 dB  
SFO2 400.1316005 MHz

F2 - Processing parameters  
SI 32768  
SF 100.6128196 MHz  
WDW EM  
SSB 0  
LB 1.00 Hz  
GB 0  
PC 1.40



8.7360  
8.6632

6.6048  
6.5887  
6.5726  
4.7408  
4.7212  
4.7106  
4.3695  
4.3583  
4.3397  
4.3278  
4.3139  
4.2971  
4.2841  
4.2257  
4.2150  
4.2047  
4.1931  
3.0565  
3.0413  
3.0244  
3.0072  
2.9914  
2.6388  
2.6281  
2.6224  
2.6117  
2.6047  
2.5943  
2.5882  
2.5780  
2.2760  
2.2577  
2.2398  
1.6043  
1.5857  
1.5673  
1.5488  
1.5304  
1.5121  
0.8981

Current Data Parameters  
NAME 070626  
EXPNO 3  
PROCNO 1

F2 - Acquisition Parameters

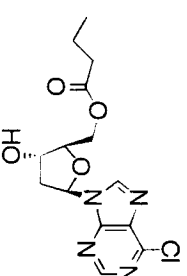
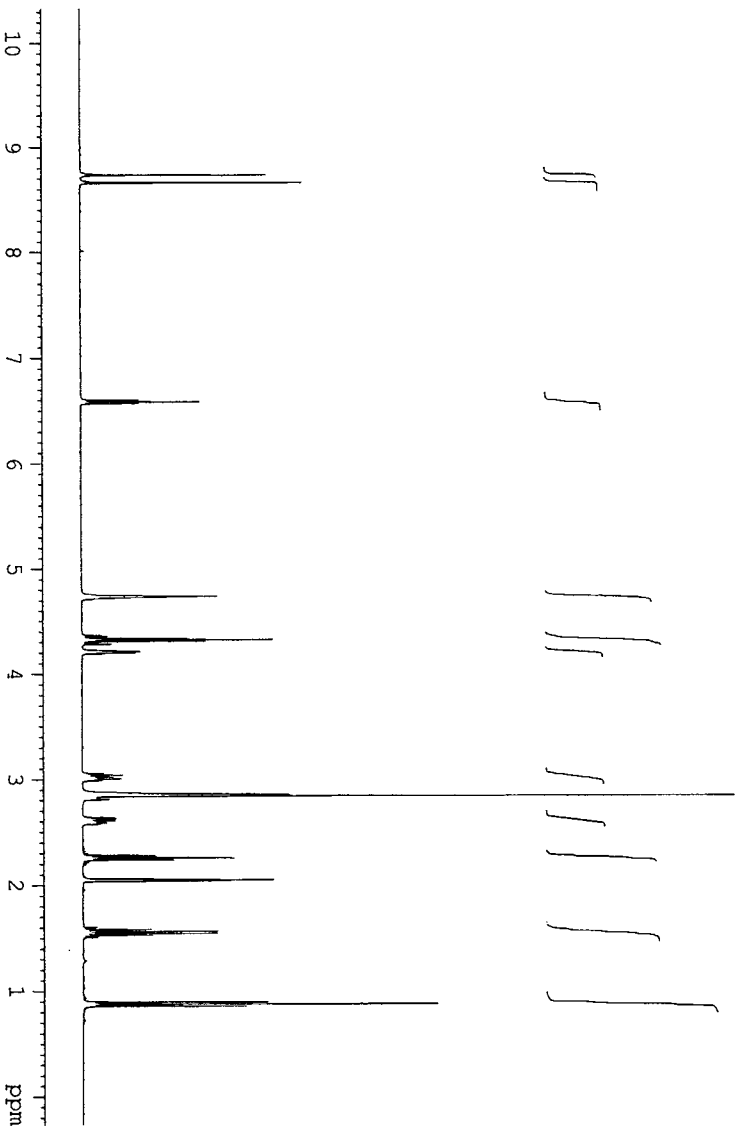
Date\_ 20070626  
Time 13.44  
INSTRUM av400  
PROBHD 5 mm Multinucl  
PULPROG zg30  
TD 65536  
SOLVENT Acetone  
NS 8  
DS 2  
SWH 8278.146 Hz  
FIDRES 0.126314 Hz  
AQ 3.9584243 sec  
RG 228.1  
DM 60.400 usec  
DE 6.50 usec  
TE 673.2 K  
D1 1.00000000 sec  
TD0 1

==== CHANNEL f1 =====

NUC1 1H  
P1 15.00 usec  
PL1 0.50 dB  
SFO1 400.1324710 MHz

F2 - Processing parameters

SI 32768  
SF 400.130063 MHz  
WDW EM  
SSB 0  
ZB 0.30 Hz  
GB 0  
PC 1.00



Compound 16

1.000  
1.034

1.080

2.059

2.248

1.109

1.123

1.145

2.151

2.204

3.345

173.369

152.400  
150.869  
145.899

132.961

85.877  
85.764

72.035

64.329

40.274

36.177

18.887

13.733

**BRUKER**

Current Data Parameters  
NAME 070615  
EXPNO 1  
PROCNO 1

F2 - Acquisition Parameters

Date\_ 20070615  
Time 16.07  
INSTRUM av400  
PROBHD 5 mm Multinucl  
PULPROG zgpg30  
TD 65536  
SOLVENT Acetone  
NS 2000  
DS 2  
SMH 23980.814 Hz  
FIDRES 0.365918 Hz  
AQ 1.3664756 sec  
RG 26008  
DM 20.850 usec  
DE 20.00 usec  
TE 298.3 K  
D1 2.00000000 sec  
d11 0.03000000 sec  
DELTA 1.89999998 sec  
TD0 1

==== CHANNEL f1 =====

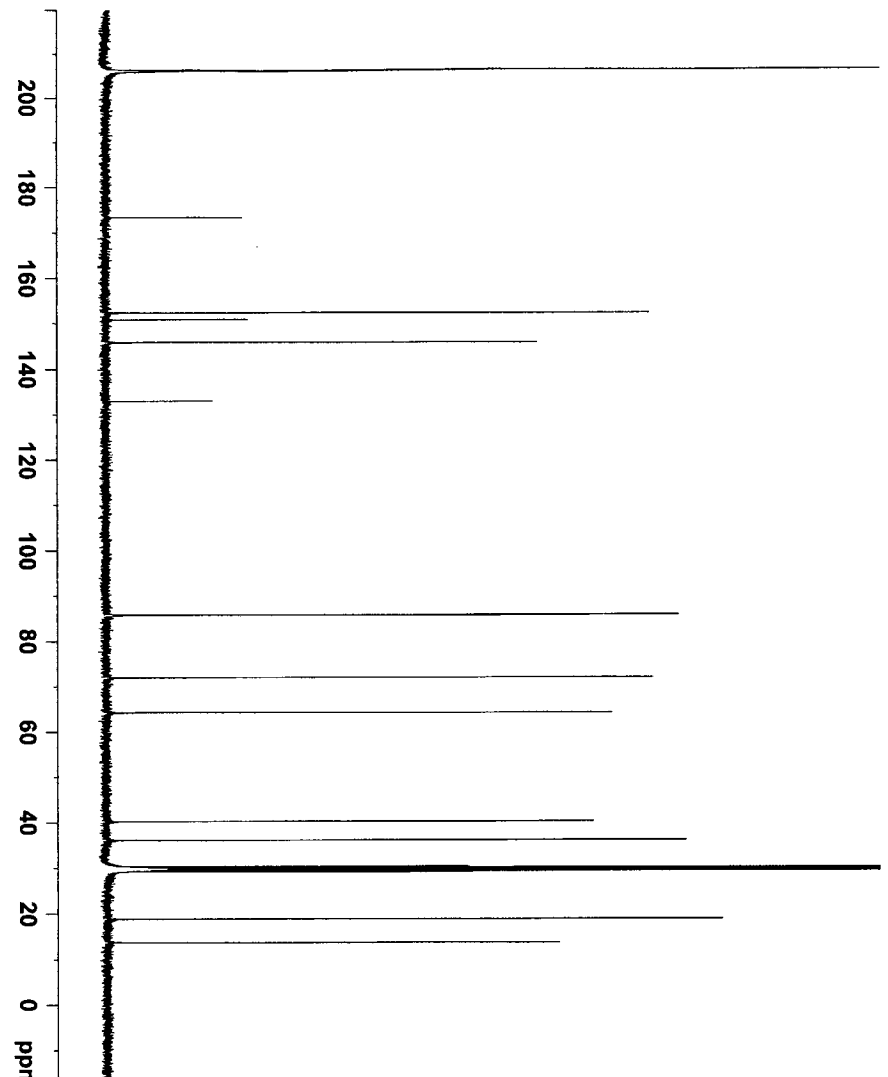
NUC1 13C  
P1 9.50 usec  
PL1 -2.00 dB  
SFO1 100.6228298 MHz

==== CHANNEL f2 =====

CPDPRG2 waltz16  
NUC2 1H  
PCPD2 80.00 usec  
PL12 15.00 dB  
PL13 15.00 dB  
PL2 0.00 dB  
SFO2 400.1316005 MHz

F2 - Processing parameters

SI 32768  
SF 100.6126851 MHz  
WDW EM  
SSB 0  
LB 1.00 Hz  
GB 0  
PC 1.40



8.840  
8.756  
7.797  
7.792  
7.780  
7.774  
6.995  
6.990  
6.978  
6.973  
6.506  
6.490  
6.475  
5.600  
5.589  
4.666  
4.652  
4.547  
4.537  
4.518  
4.507  
4.409  
4.394  
4.379  
4.364  
4.182  
4.172  
4.169  
4.161  
4.157  
3.828  
2.998  
2.982  
2.980  
2.965  
2.509  
2.505  
2.500  
2.495  
2.491  
2.485  
2.472  
2.468  
2.455  
2.451

Current Data Parameters  
NAME YK635\_NON  
EXPNO 1  
PROCNO 1

F2 - Acquisition Parameters  
Date\_ 20070223  
Time\_ 14.14

INSTRUM AV400  
PROBHD 5 mm Multinuc1  
PULPROG zgpg30  
TD 65536  
SOLVENT DMSO  
NS 16  
DS 2

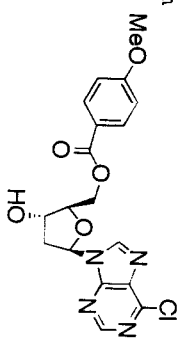
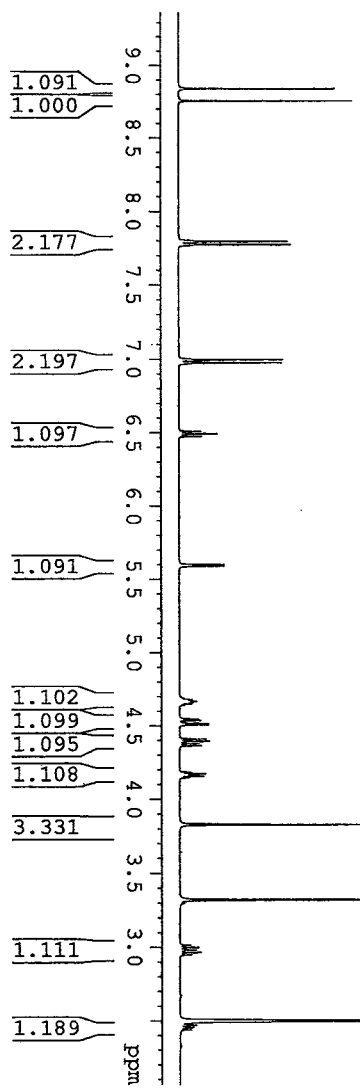
SWH 8278.146 Hz  
FIDRES 0.126314 Hz  
AQ 3.9584243 sec  
RG 512  
DW 60.400 usec  
DE 6.50 usec  
TE 297.8 K  
D1 1.00000000 sec  
TD0 1

CHANNEL F1

NUC1 1H  
P1 15.00 usec  
PL1 0.50 dB  
SFO1 400.1324710 MHz

F2 - Processing parameters

SF 400.1300022 MHz  
WDW EM  
SSB 0  
LB 0.30 Hz  
GB 0  
PC 1.00



Compound 17

**BRUKER**

Current Data Parameters  
NAME YK635B0M  
EXPNO 1  
PROCNO 1

F2 - Acquisition Parameters

Date\_ 20070214  
Time\_ 16.38  
INSTRUM av400  
PROBHD 5 mm PABBO Bb-  
PULPROG zgpg30  
TD 65536  
SOLVENT DMSO  
NS 1000  
DS 2  
SWH 23980.814 Hz  
FIDRES 0.365918 Hz  
AQ 1.3664756 sec  
RG 32768  
DW 20.850 usec  
DE 20.00 usec  
TE 299.0 K  
D1 2.00000000 sec  
d11 0.03000000 sec  
DELTA 1.89999998 sec  
TD0 1

CHANNEL F1

NUC1 13C  
P1 9.50 usec  
PL1 -0.50 dB  
SFO1 100.6479773 MHz

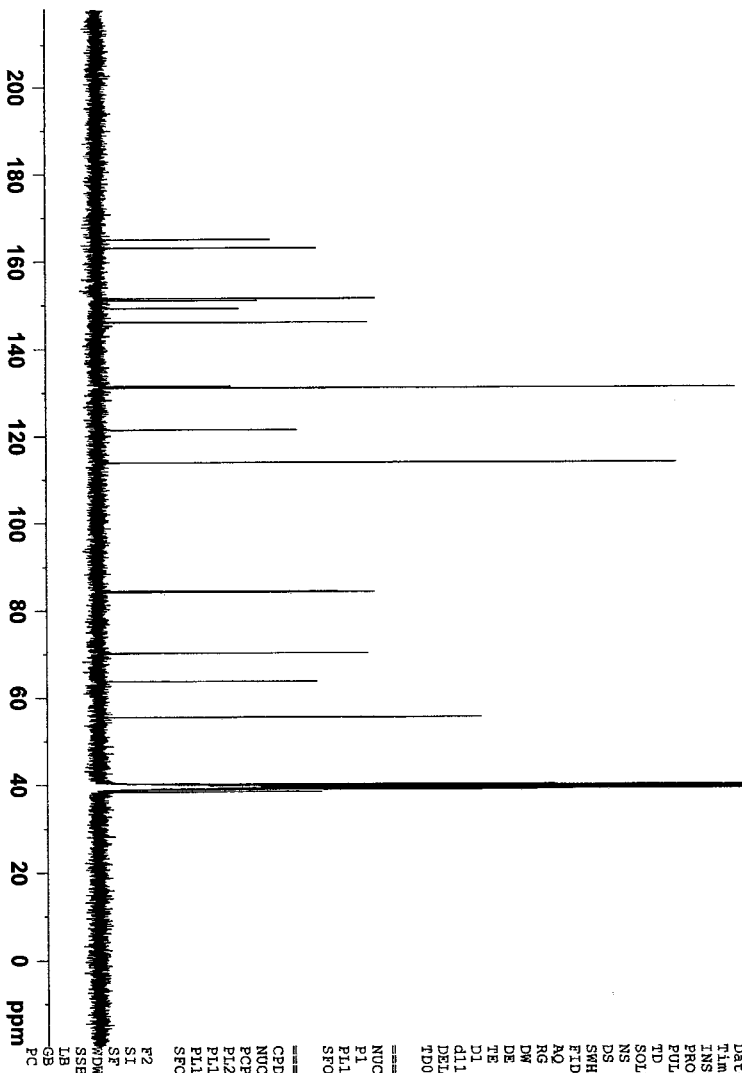
CHANNEL F2

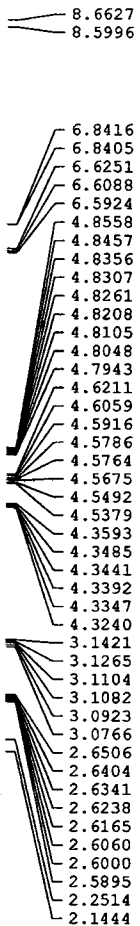
waltz16  
NUC2 1H  
PCPD2 80.00 usec  
PI2 0.00 dB  
PI12 15.00 dB  
PI13 15.00 dB  
SFO2 400.2316009 MHz

F2 - Processing parameters

SF 100.6379619 MHz  
WDW EM  
SSB 0  
LB 1.00 Hz  
GB 0  
PC 1.40

165.09  
163.16  
151.59  
151.18  
149.29  
146.10  
131.47  
131.17  
121.45  
113.90  
84.42  
84.26  
70.23  
63.73  
55.48  
40.13  
39.92  
39.71  
39.51  
39.30  
39.09  
38.88  
38.40





Current Data Parameters  
 NAME 070626  
 EXPNO 2  
 PROCNO 1

F2 - Acquisition Parameters

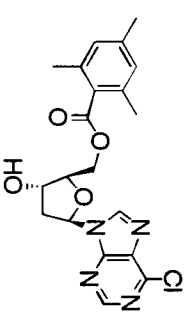
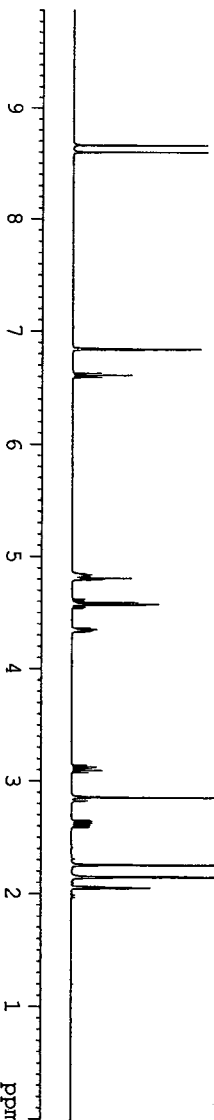
Date\_ 20070626  
 Time 13.03  
 INSTRUM av400  
 PROBD 5 mm Multinuc1  
 PULPROG zgpg30  
 TD 65536  
 SOLVENT Acetone  
 NS 8  
 DS 2  
 SWH 8278.146 Hz  
 FIDRES 0.126314 Hz  
 AQ 3.9584243 sec  
 RG 228.1  
 DE 60.400 usec  
 DM 6.50 usec  
 TE 673.2 K  
 TD 1.00000000 sec  
 TDO 1

CHANNEL F1

NUC1 1H  
 P1 15.00 usec  
 PL1 0.50 dB  
 SFO1 400.1324710 MHz

F2 - Processing Parameters

SI 32768  
 SF 400.130063 MHz  
 WDM EM  
 SSB 0  
 LB 0.30 Hz  
 GB 0  
 PC 1.00



Compound 18



Current Data Parameters  
 NAME 070626  
 EXPNO 1  
 PROCNO 1

F2 - Acquisition Parameters

Date\_ 20070626  
 Time 12.52  
 INSTRUM av400  
 PROBD 5 mm Multinuc1  
 PULPROG zgpg30  
 TD 65536  
 SOLVENT Acetone  
 NS 1600  
 DS 2  
 SWH 23980.814 Hz  
 FIDRES 0.365918 Hz  
 AQ 1.3664758 sec  
 RG 26008  
 DW 20.850 usec  
 DE 20.00 usec  
 TE 673.2 K  
 D1 2.00000000 sec  
 D11 0.03000000 sec  
 DELTA 1.89999998 sec  
 TDO 1

CHANNEL F1

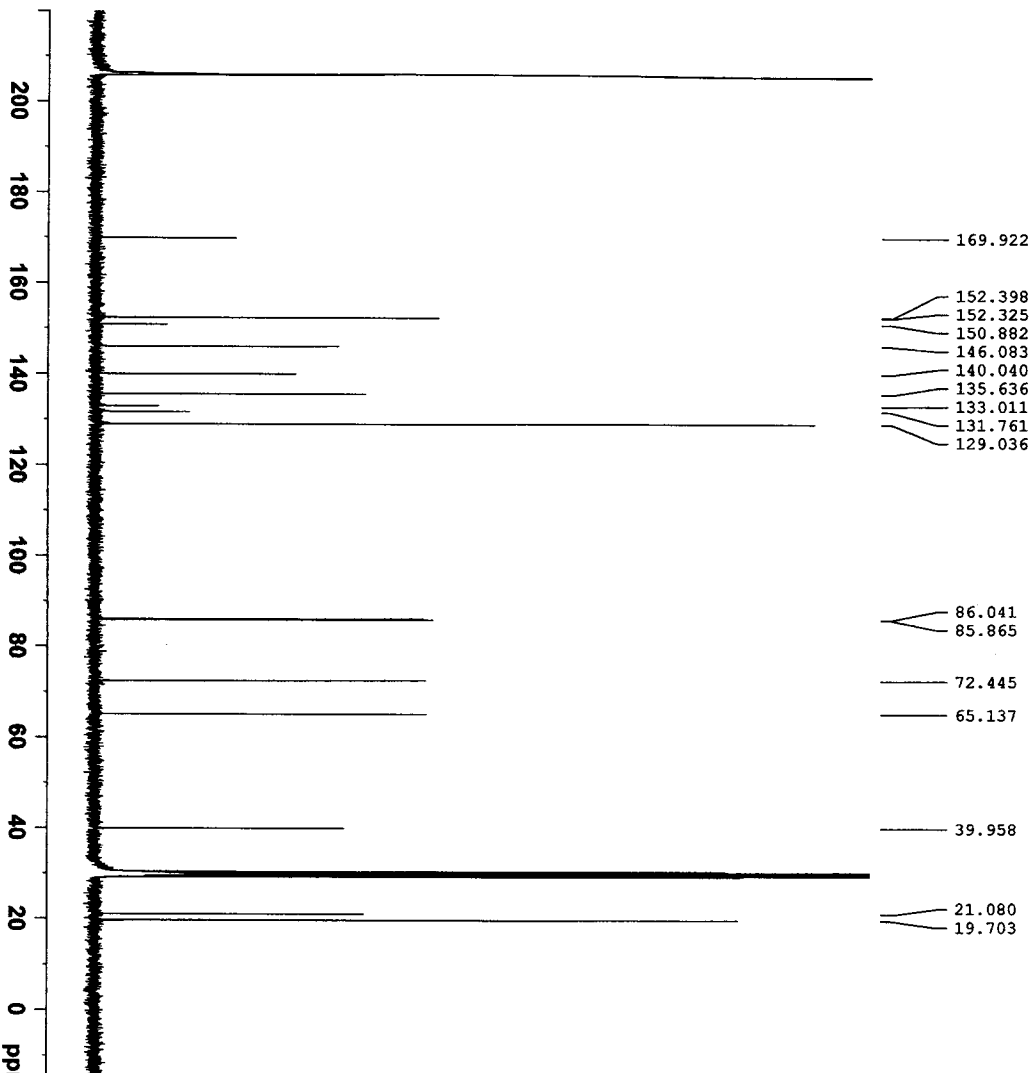
NUC1 13C  
 P1 9.50 usec  
 PL1 -2.00 dB  
 SFO1 100.628298 MHz

CHANNEL F2

CPDPRG2 waltz16  
 NUC2 1H  
 PCPD2 80.00 usec  
 PL12 15.00 dB  
 PL13 15.00 dB  
 PL2 0.00 dB  
 SFO2 400.1316005 MHz

F2 - Processing Parameters

SI 32768  
 SF 100.6126827 MHz  
 WDM EM  
 SSB 0  
 LB 1.00 Hz  
 GB 0  
 PC 1.40



- 8.6576
- 8.5716
- 7.8638
- 7.8438
- 7.6981
- 7.6798
- 7.6629
- 7.6608
- 7.5778
- 7.5584
- 7.5392
- 6.5726
- 6.5561
- 6.5396
- 4.8156
- 4.8058
- 4.7556
- 4.7454
- 4.7352
- 4.7302
- 4.7200
- 4.7098
- 4.4259
- 4.4160
- 4.3989
- 4.3890
- 4.3475
- 4.3330
- 4.3206
- 4.3060
- 4.2301
- 4.2205
- 4.2114
- 4.2063
- 4.1965
- 3.0347
- 3.0187
- 3.0013
- 2.9843
- 2.9684
- 2.5976
- 2.5868
- 2.5808
- 2.5701
- 2.5633
- 2.5525

Current Data Parameters  
 NAME 070625  
 EXPNO 2  
 PROCNO 1

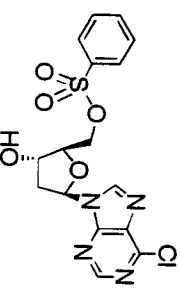
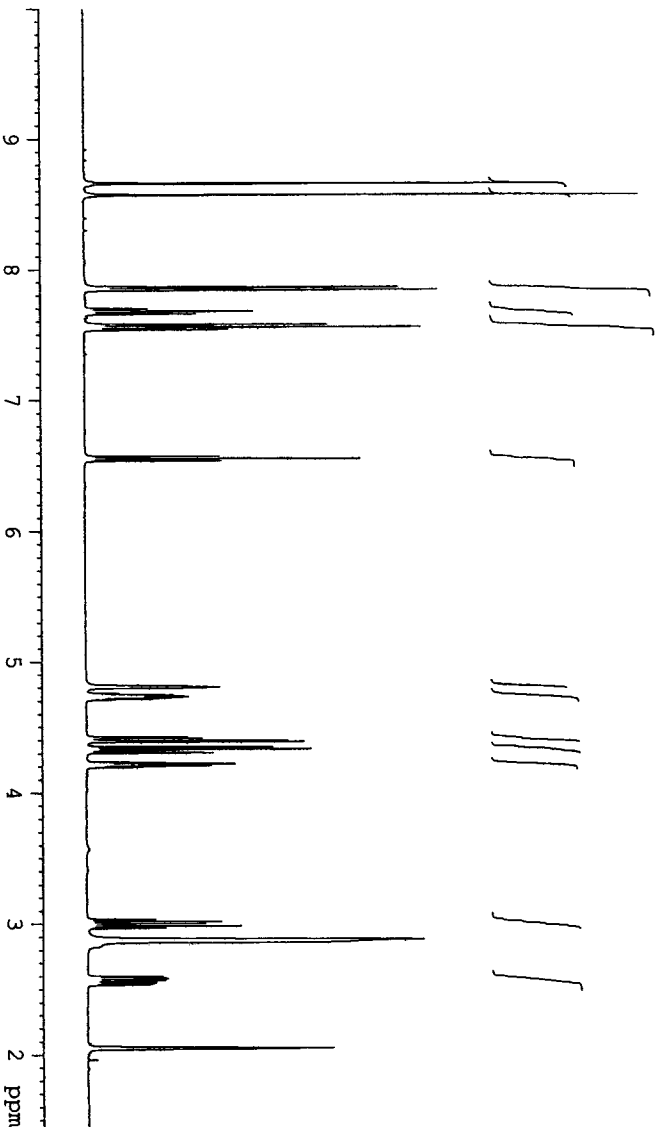
F2 - Acquisition Parameters  
 Date\_ 20070625  
 Time 13.13  
 INSTRUM av400  
 PROBH1 5 mm Multinucl1  
 PULPROG zg30  
 TD 65536  
 SOLVENT Acetone  
 NS 8  
 DS 2  
 SMH 8276.146 Hz  
 FIDRES 0.126314 Hz  
 AQ 3.9584243 sec  
 RG 228.1  
 DW 60.400 usec  
 DE 6.50 usec  
 TE 673.2 K  
 D1 1.00000000 sec  
 TD0 1

CHANNEL F1  
 NUCL1 1H  
 P1 15.00 usec  
 PL1 0.50 dB  
 SFO1 400.1324710 MHz

CHANNEL F2  
 waltz16  
 NUCL2 1H  
 PCPD2 80.00 usec  
 PL12 15.00 dB  
 PL13 15.00 dB  
 PL12 0.00 dB  
 SFO2 400.1316005 MHz

F2 - Processing parameters

SI 32768  
 SF 400.1300651 MHz  
 WDM EM  
 SSB 0  
 LB 0.30 Hz  
 GB 0  
 PC 1.00



Compound 19

- 152.316
- 152.288
- 150.942
- 146.090
- 136.683
- 134.819
- 133.070
- 130.178
- 128.547

- 85.982
- 85.505
- 71.952
- 70.801

- 39.776



Current Data Parameters  
 NAME 070625  
 EXPNO 1  
 PROCNO 1

F2 - Acquisition Parameters

Date\_ 20070625  
 Time 12.06  
 INSTRUM av400  
 PROBH1 5 mm Multinucl1  
 PULPROG zgpg30  
 TD 65536  
 SOLVENT Acetone  
 NS 1360  
 DS 2  
 SMH 23980.814 Hz  
 FIDRES 0.365918 Hz  
 AQ 1.3664756 sec  
 RG 26008  
 DW 20.850 usec  
 DE 20.00 usec  
 TE 673.2 K  
 D1 2.00000000 sec  
 d11 0.03000000 sec  
 DELTA 1.89999998 sec  
 TD0 1

CHANNEL F1

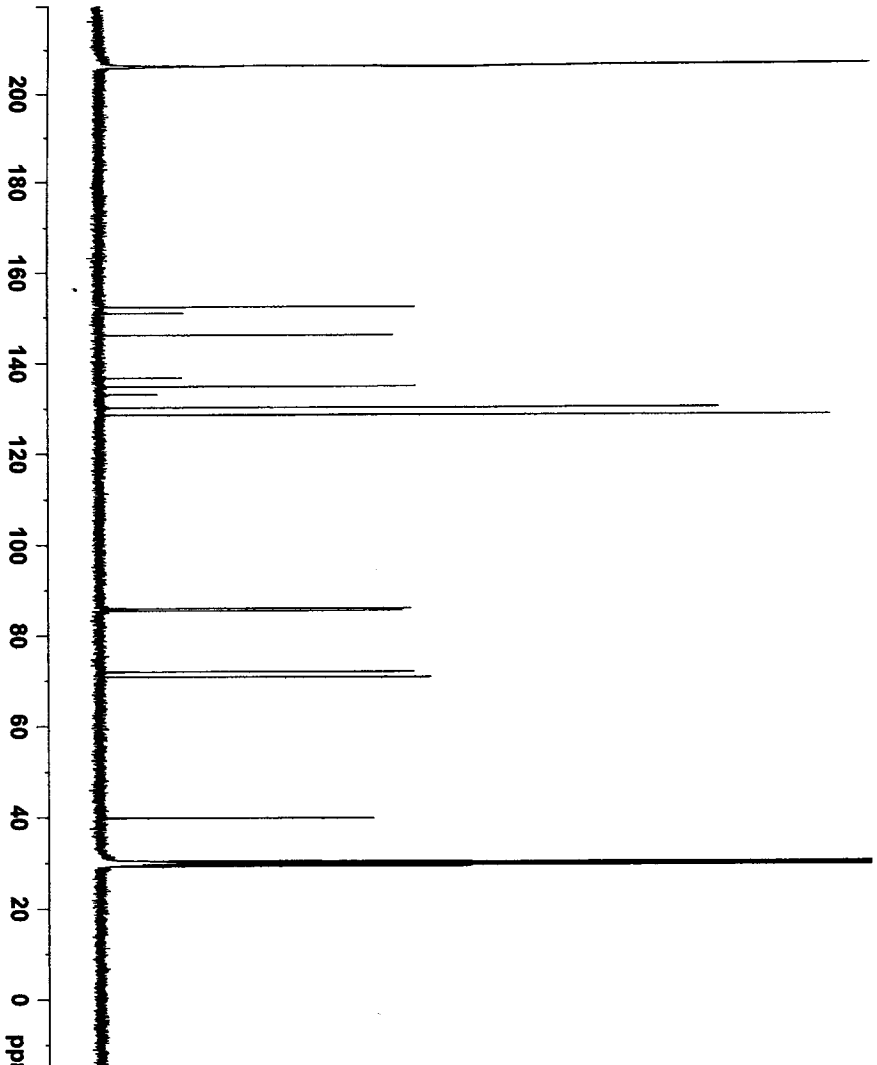
NUCL1 13C  
 P1 9.50 usec  
 PL1 -2.00 dB  
 SFO1 100.6228298 MHz

CHANNEL F2

waltz16  
 NUCL2 1H  
 PCPD2 80.00 usec  
 PL12 15.00 dB  
 PL13 15.00 dB  
 PL12 0.00 dB  
 SFO2 400.1316005 MHz

F2 - Processing parameters

SI 32768  
 SF 100.6126835 MHz  
 WDM EM  
 SSB 0  
 LB 1.00 Hz  
 GB 0  
 PC 1.40





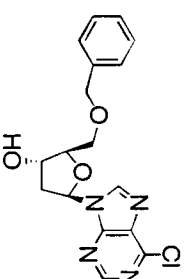
8.797  
8.775  
7.320  
7.304  
7.299  
7.294  
7.290  
7.286  
7.281  
7.278  
7.273  
7.261  
7.256  
7.252  
7.247  
7.242  
7.237  
7.233  
6.495  
6.479  
6.463  
5.458  
5.447  
4.506  
4.496  
4.486  
4.048  
4.046  
4.036  
3.705  
3.695  
3.679  
3.668  
3.607  
3.594  
3.581  
3.567  
2.850  
2.832  
2.816  
2.425  
2.419  
2.408  
2.402

Current Data Parameters  
NAME 070223  
EXPNO 3  
PROCNO 1

F2 - Acquisition Parameters  
Date\_ 20070423  
Time 12.09  
INSTRUM 5 mm Multinuc1  
PROBHD av400  
PULPROG zg30  
TD 65536  
SOLVENT DMSO  
NS 8  
DS 2  
SWH 8278.146 Hz  
FIDRES 0.126314 Hz  
AQ 3.9584243 sec  
RG 362  
DW 60.400 usec  
DE 6.50 usec  
TE 299.5 K  
D1 1.00000000 sec  
TDO 1

===== CHANNEL f1 =====  
NUC1 1H  
P1 15.00 usec  
PL 0.50 dB  
SFO1 400.1324710 MHz

F2 - Processing parameters  
SI 32768  
SF 400.1300021 MHz  
WDW EM  
SSB 0  
LB 0.30 Hz  
GB 0  
PC 1.00



Compound 20

**BRUKER**

152.500  
152.364  
150.732  
145.652  
139.204  
132.795  
129.118  
128.476  
128.374

87.636  
85.736  
73.830  
72.598  
71.048

41.151

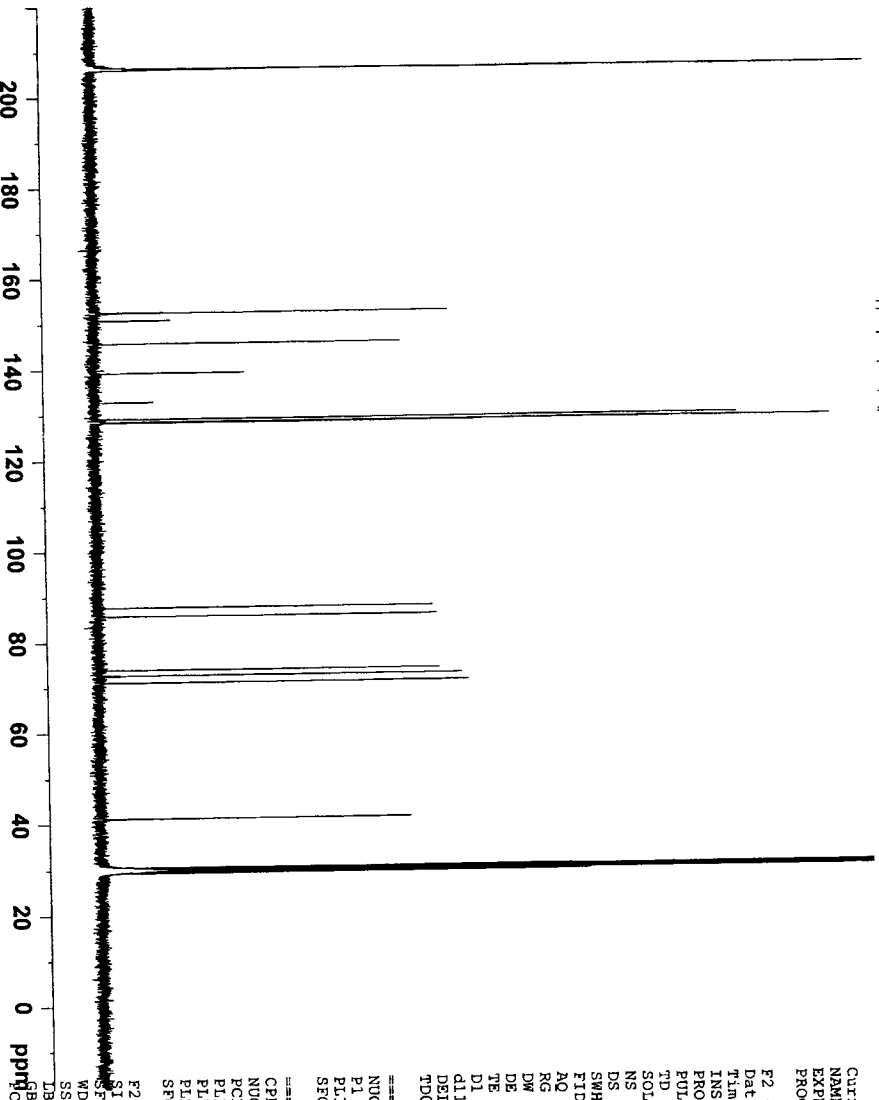
Current Data Parameters  
NAME 070619  
EXPNO 1  
PROCNO 1

F2 - Acquisition Parameters  
Date\_ 20070619  
Time 15.45  
INSTRUM av400  
PROBHD 5 mm Multinuc1  
PULPROG zgpg30  
TD 65536  
SOLVENT Acetone  
NS 1360  
DS 2  
SWH 23980.814 Hz  
FIDRES 0.365918 Hz  
AQ 1.3664756 sec  
RG 26008  
DW 20.850 usec  
DE 298.5 K  
TE 2  
D1 2.00000000 sec  
d11 0.03000000 sec  
DELTA 1.89999998 sec  
TDO 1

===== CHANNEL f1 =====  
NUC1 13C  
P1 9.50 usec  
PL -2.00 dB  
SFO1 100.6228298 MHz

===== CHANNEL f2 =====  
CPDPRG2 waltz16  
NUC2 1H  
PCPD2 80.00 usec  
PL12 15.00 dB  
PL13 15.00 dB  
PL2 0.00 dB  
SFO2 400.1316005 MHz

F2 - Processing parameters  
SI 32768  
SF 100.6126833 MHz  
WDW EM  
SSB 0  
LB 1.00 Hz  
GB 0  
PC 1.40





**BRUKER**

Current Data Parameters  
NAME Bz\_OH\_NMe2da\_NON  
EXPNO 1  
PROCNO 1

F2 - Acquisition Parameters

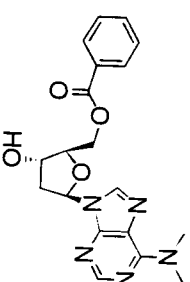
Date\_ 20070223  
Time 19.17  
INSTRUM 5 mm PABBO BB-  
PROBHD 5 mm PABBO BB-  
PULPROG zg30  
TD 65536  
SOLVENT Acetone  
NS 8  
DS 2  
SWH 8278.146 Hz  
FIDRES 0.126314 Hz  
AQ 3.9584243 sec  
RG 322.5  
DW 60.400 usec  
DE 6.50 usec  
TE 298.0 K  
D1 1.00000000 sec  
TD0 1

CHANNEL f1

NUC1 1H  
P1 14.00 usec  
PL 0.00 dB  
SFO1 400.2324716 MHz

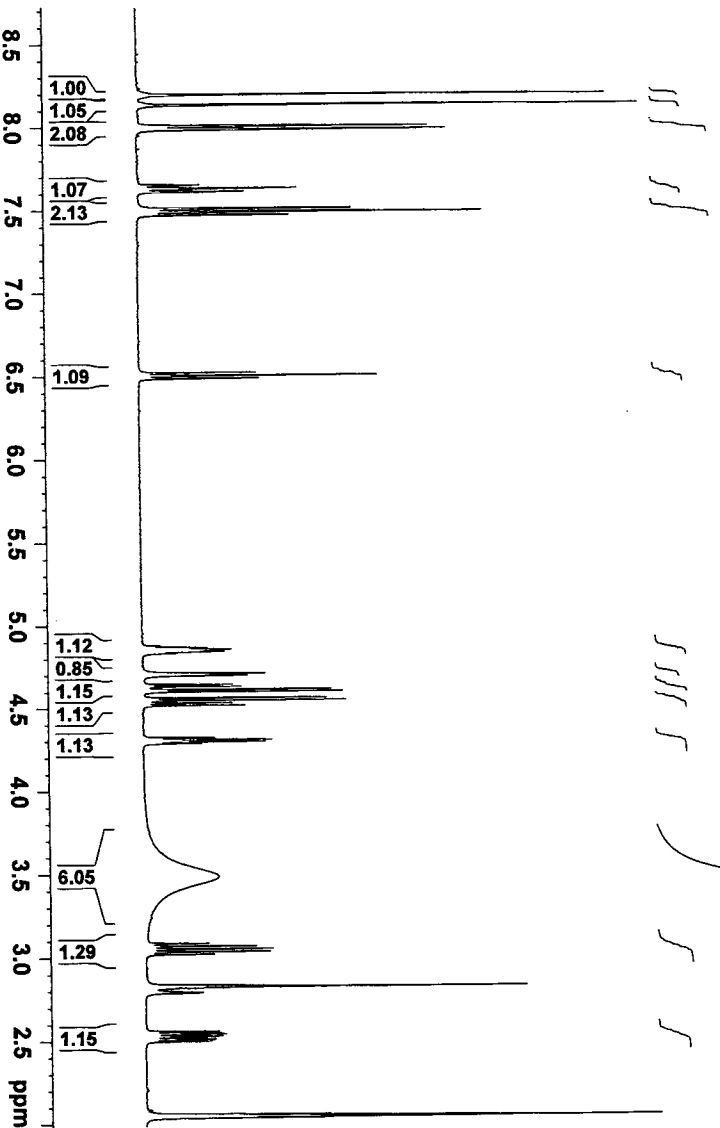
F2 - Processing parameters

SF 32768 MHz  
SI 400.230023 MHz  
SE 0.30 Hz  
WDW 0  
SSB 0  
LB 0  
GB 0  
PC 1.00



Compound 24

- 8.198
- 8.136
- 8.007
- 7.993
- 7.989
- 7.986
- 7.650
- 7.647
- 7.631
- 7.613
- 7.511
- 7.491
- 7.472
- 6.521
- 6.504
- 6.487
- 4.866
- 4.856
- 4.851
- 4.841
- 4.831
- 4.709
- 4.699
- 4.642
- 4.631
- 4.613
- 4.601
- 4.561
- 4.547
- 4.531
- 4.517
- 4.321
- 4.309
- 4.298
- 4.286
- 3.486
- 3.087
- 3.070
- 3.053
- 3.037
- 3.020
- 2.559
- 2.549
- 2.542
- 2.532
- 2.525
- 2.515



Current Data Parameters  
NAME Bz\_OH\_NMe2da\_BCM  
EXPNO 1  
PROCNO 1

F2 - Acquisition Parameters

Date\_ 20070223  
Time 15.42  
INSTRUM av400  
PROBHD 5 mm Multinuc1  
PULPROG zgpg30  
TD 65536  
SOLVENT Acetone  
NS 1024  
DS 4  
SWH 23980.814 Hz  
FIDRES 0.365918 Hz  
AQ 1.3664756 sec  
RG 8192  
DW 20.850 usec  
DE 6.50 usec  
TE 298.0 K  
D1 2.00000000 sec  
d11 0.03000000 sec  
DELTA 1.89999999 sec  
TD0 1

CHANNEL f1

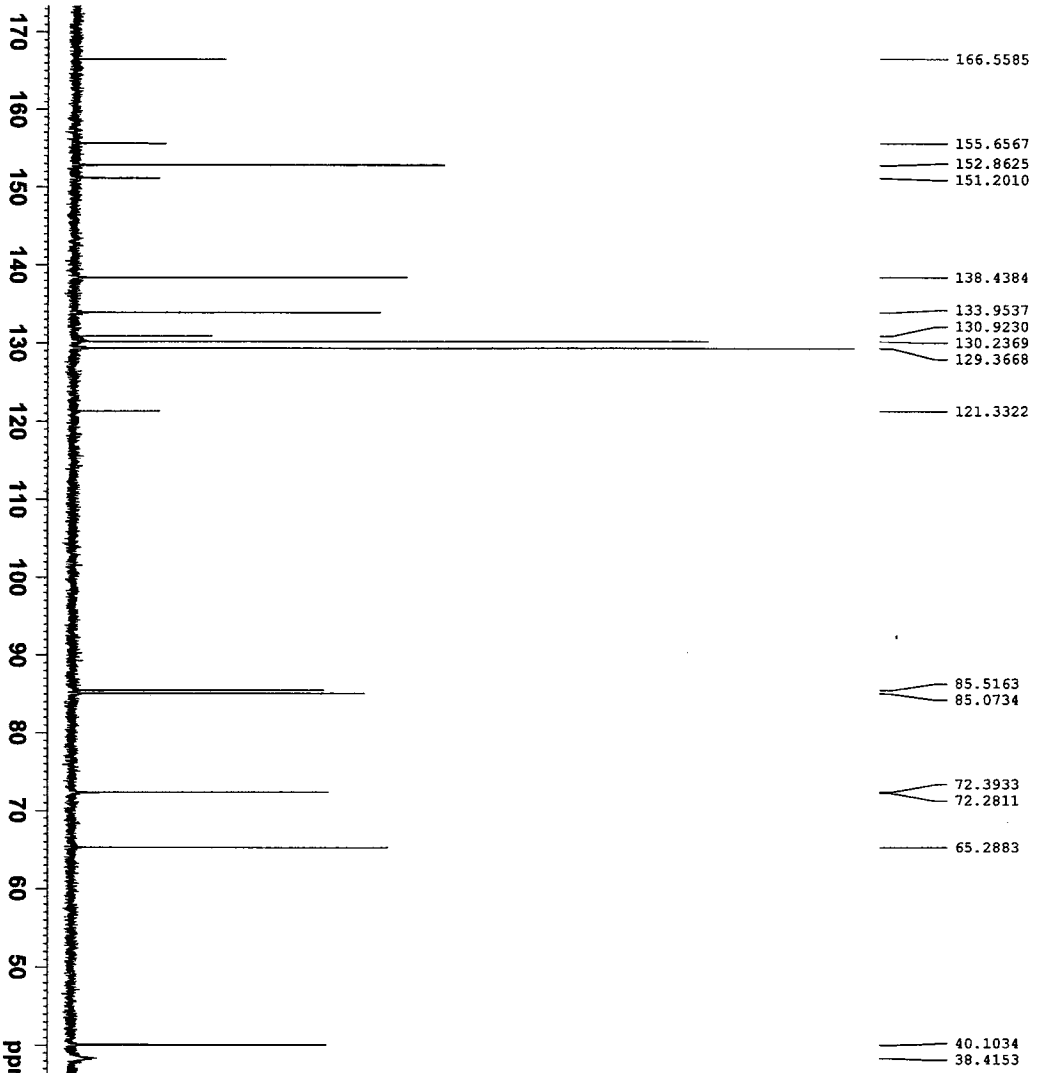
NUC1 13C  
P1 9.50 usec  
PL1 -2.00 dB  
SFO1 100.6228298 MHz

CHANNEL f2

CPDPRG2 waltz16  
NUC2 1H  
PCPD2 80.00 usec  
PL2 0.00 dB  
PL12 15.00 dB  
PL13 15.00 dB  
SFO2 400.1316005 MHz

F2 - Processing parameters

SF 32768 MHz  
SI 100.6126833 MHz  
WDW EM  
SSB 0  
LB 1.00 Hz  
GB 0  
PC 1.40



**BRUKER**

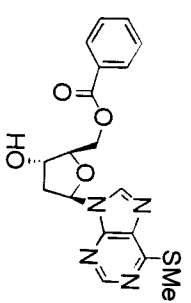
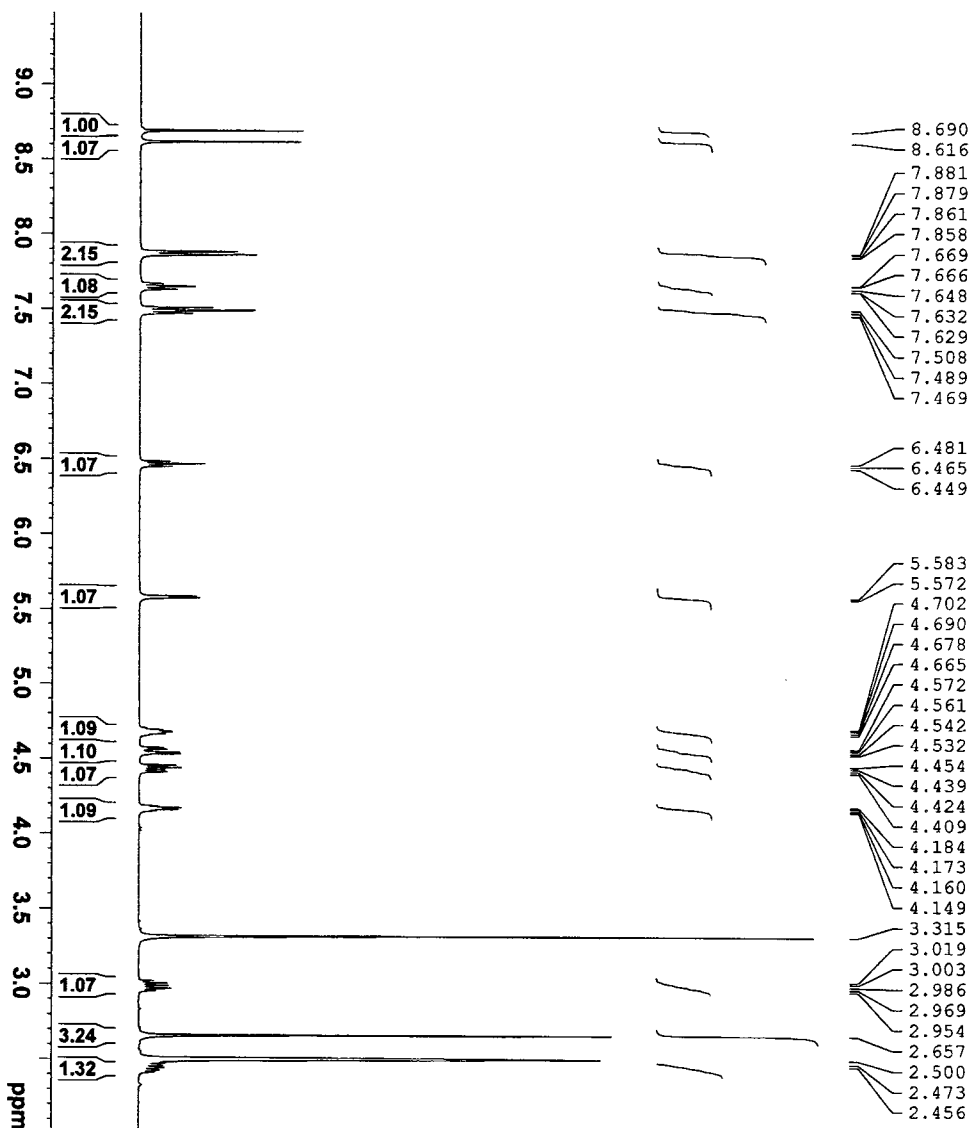
Current Data Parameters  
NAME 060728  
EXPNO 1  
PROCNO 1

F2 - Acquisition Parameters  
Date\_ 20060728  
Time 10.34

INSTRUM av400  
PROBHD 5 mm PABBO BB-  
PULPROG zg30  
TD 65536  
SOLVENT DMSO  
NS 8  
DS 2  
SWH 8278.146 Hz  
FIDRES 0.126314 Hz  
AQ 3.9584243 sec  
RG 645.1  
DW 60.400 usec  
DE 6.50 usec  
TE 298.7 K  
D1 1.00000000 sec  
TD0 1

CHANNEL f1  
NUC1 1H  
P1 14.00 usec  
PL1 0.00 dB  
SFO1 400.2324716 MHz

F2 - Processing parameters  
SI 32768  
SF 400.2299978 MHz  
WDW EM  
SSB 0  
LB 0.30 Hz  
GB 0  
PC 1.00



Current Data Parameters  
NAME 070501  
EXPNO 3  
PROCNO 1

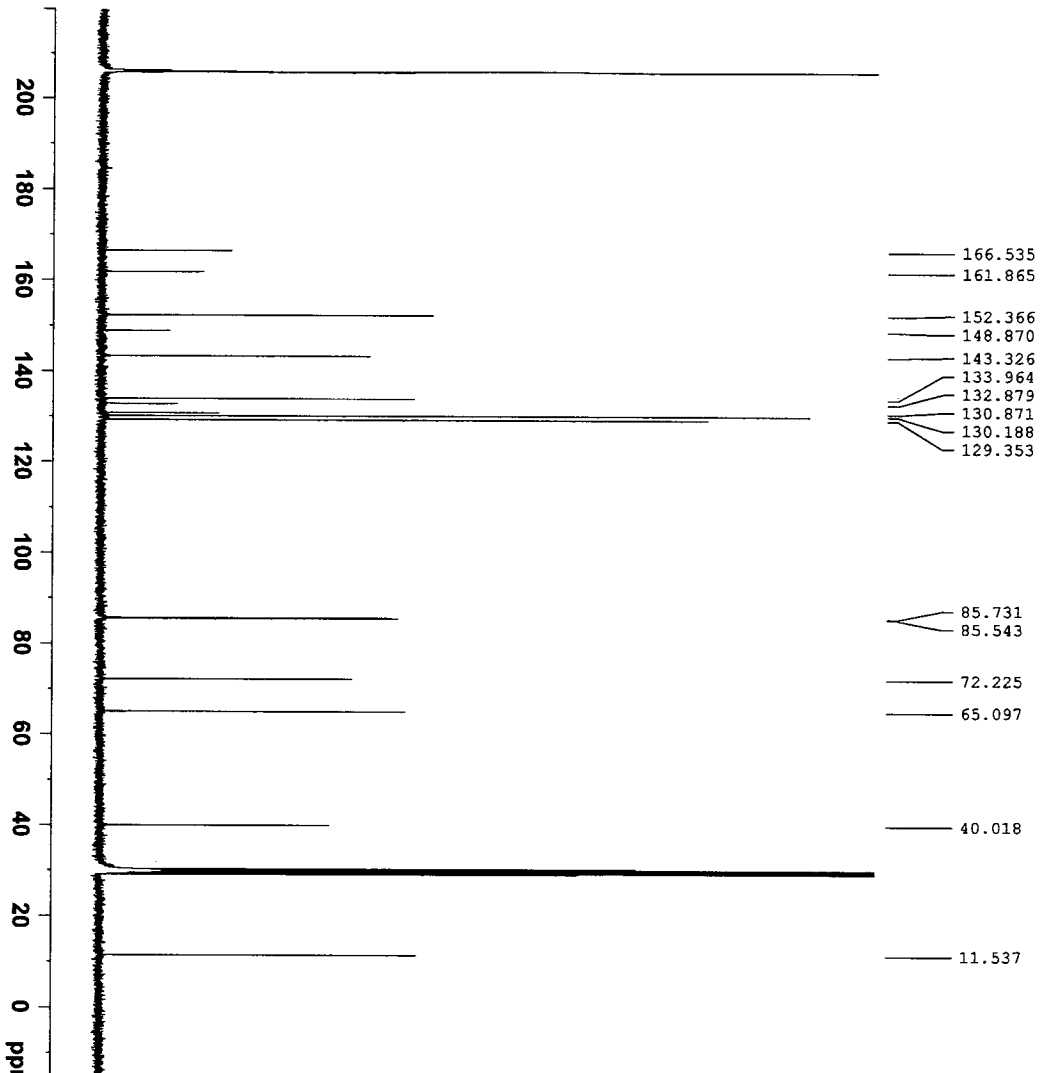
F2 - Acquisition Parameters  
Date\_ 20070501  
Time 17.41

INSTRUM av400  
PROBHD 5 mm Multinucl  
PULPROG zgpg30  
TD 65536  
SOLVENT Acetone  
NS 1600  
DS 2  
SWH 23980.814 Hz  
FIDRES 0.365918 Hz  
AQ 1.3664756 sec  
RG 26008  
DM 20.850 usec  
DE 20.00 usec  
TE 299.5 K  
D1 2.00000000 sec  
d11 0.03000000 sec  
DELTA 1.89999998 sec  
TD0 1

CHANNEL f1  
NUC1 13C  
P1 9.50 usec  
PL1 -2.00 dB  
SFO1 100.6228298 MHz

CHANNEL f2  
CPDPRG2 waltz16  
NUC2 1H  
PCPD2 80.00 usec  
PL12 15.00 dB  
PL13 15.00 dB  
PL2 0.00 dB  
SFO2 400.1316005 MHz

F2 - Processing parameters  
SI 32768  
SF 100.6126831 MHz  
WDW EM  
SSB 0  
LB 1.00 Hz  
GB 0  
PC 1.40





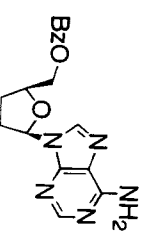
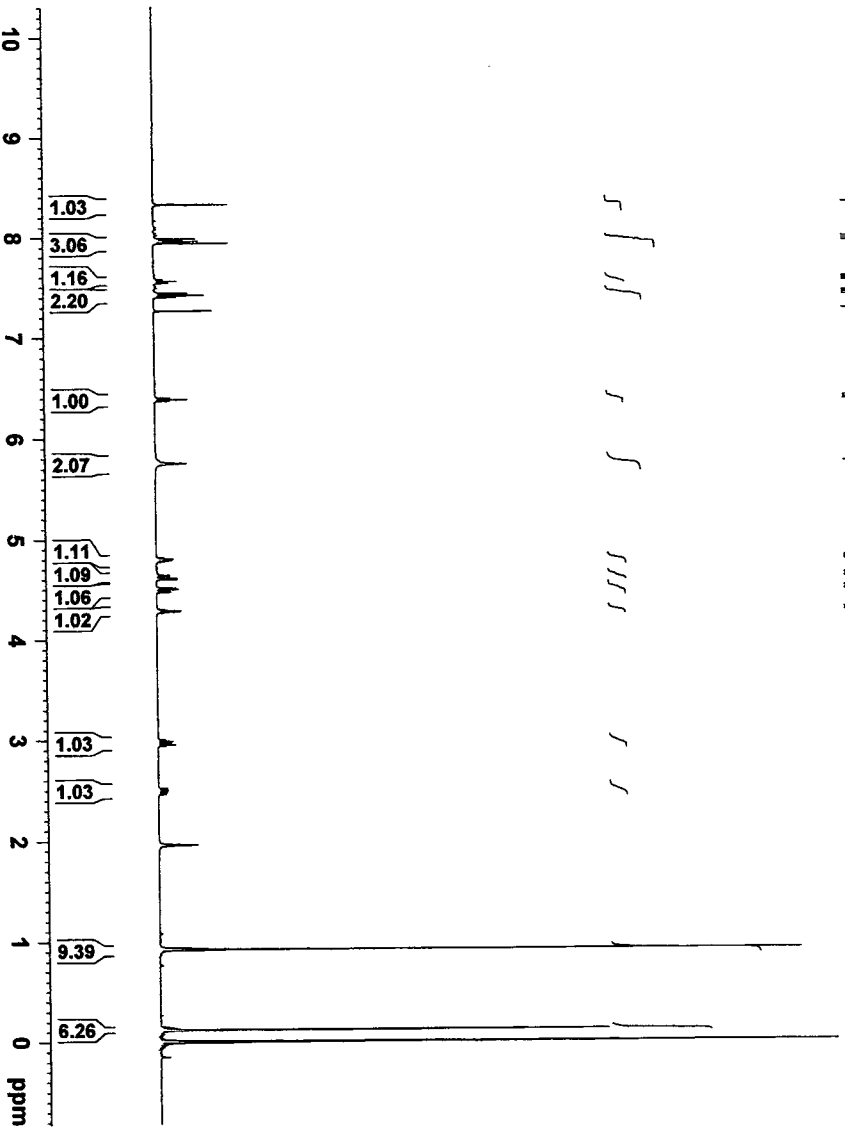
Current Data Parameters  
 NAME Bz\_TBS\_da\_NON  
 EXPNO 1  
 PROCNO 1

F2 - Acquisition Parameters  
 Date\_ 20070222  
 Time 13.40

INSTRUM 5 mm PABBO BB-  
 PROBHD av400  
 PULPROG zg30  
 TD 65536  
 SOLVENT CDCl3  
 NS 8  
 DS 2  
 SMH 8278.146 Hz  
 FIDRES 0.126314 Hz  
 AQ 3.9584243 sec  
 RG 151.3  
 KG 60.400 usec  
 DM 6.50 usec  
 DE 296.3 K  
 TE 1.00000000 sec  
 D1  
 TD0 1

CHANNEL F1  
 NUC1 1H  
 P1 14.00 usec  
 PL 0.00 dB  
 SFO1 400.2324716 MHz  
 F2 - Processing parameters  
 S1 32768  
 SF 400.2300024 MHz  
 WDW EM  
 SSB 0  
 LB 0.30 Hz  
 GB 0  
 PC 1.00

8.323  
7.981  
7.980  
7.962  
7.958  
7.942  
7.581  
7.562  
7.543  
7.441  
7.421  
7.402  
7.266  
6.404  
6.388  
6.372  
5.754  
4.816  
4.805  
4.795  
4.790  
4.780  
4.644  
4.633  
4.614  
4.603  
4.516  
4.504  
4.485  
4.474  
4.298  
4.287  
4.277  
4.266  
3.004  
2.989  
2.972  
2.956  
2.940  
2.522  
2.510  
2.506  
2.494  
2.489  
2.477  
2.472  
2.461  
1.960  
0.934  
0.137



Compound 27

**BRUKER**

Current Data Parameters  
 NAME Bz\_TBS\_da\_BCM  
 EXPNO 1  
 PROCNO 1

F2 - Acquisition Parameters

Date\_ 20070221  
 Time 13.34  
 INSTRUM av400  
 PROBHD 5 mm PABBO BB-  
 PULPROG zgpg30  
 TD 65536  
 SOLVENT  $cdcl_3$  (Dry)  
 NS 1000  
 DS 2  
 SMH 23980.814 Hz  
 FIDRES 0.365918 Hz  
 AQ 1.3664756 sec  
 RG 32768  
 DM 20.850 usec  
 DE 20.00 usec  
 TE 297.3 K  
 D1 2.00000000 sec  
 d11 0.03000000 sec  
 DELTA 1.89999998 sec  
 TD0 1

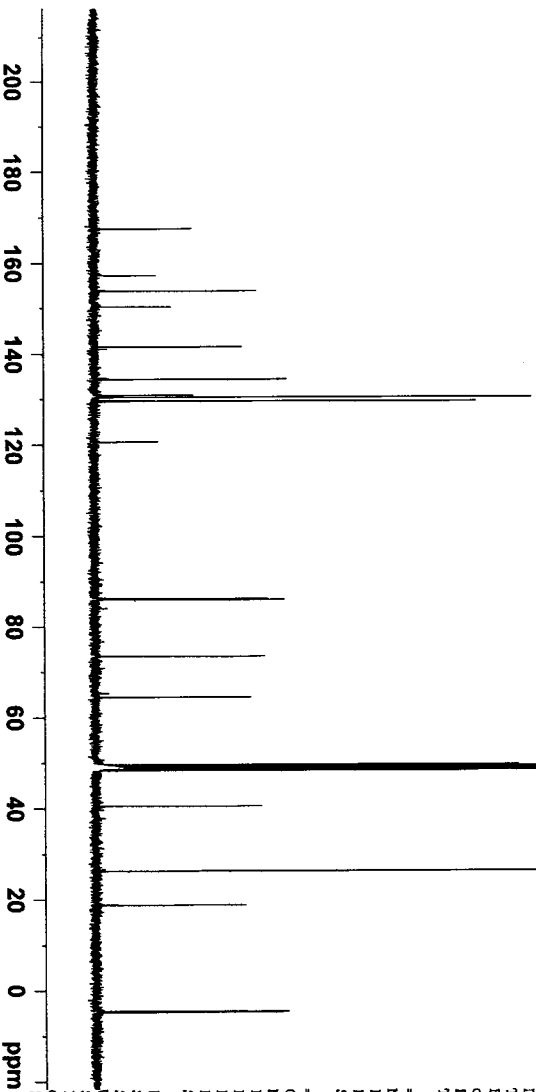
CHANNEL F1  
 NUC1 13C  
 P1 9.50 usec  
 PL -0.50 dB  
 SFO1 100.6479773 MHz

CHANNEL F2  
 waltz16  
 NUC2 1H

CEPPRG2  
 NUC2 80.00 usec  
 PCPD2 0.00 dB  
 PL2 15.00 dB  
 PL12 15.00 dB  
 PL13 15.00 dB  
 SFO2 400.2316009 MHz

F2 - Processing parameters  
 SF 32768  
 SF 100.6381695 MHz  
 WDW EM  
 SSB 0  
 LB 1.00 Hz  
 GB 0  
 PC 1.40

167.5645  
157.2603  
153.7781  
150.1992  
141.5094  
134.4195  
130.8797  
130.4710  
129.5744  
120.6671  
86.1734  
85.9969  
73.4481  
64.4561  
49.6430  
49.4307  
49.2864  
49.2162  
48.7920  
48.5791  
48.3650  
40.5330  
26.2559  
18.8336  
14.5379  
14.7267  
49.0000



8.870  
8.735  
7.848  
7.845  
7.832  
7.827  
7.824  
7.666  
7.651  
7.647  
7.643  
7.632  
7.628  
7.625  
7.495  
7.490  
7.476  
7.474  
7.460  
7.456  
6.511  
6.495  
6.479  
4.926  
4.912  
4.590  
4.578  
4.560  
4.548  
4.436  
4.423  
4.406  
4.393  
4.193  
4.181  
3.104  
3.089  
3.086  
3.071  
2.476  
2.473  
2.460  
0.898  
0.126  
0.122

Current Data Parameters  
NAME 070502  
EXPNO 1  
PROCNO 1

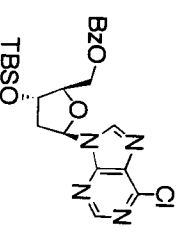
F2 - Acquisition Parameters  
Date\_ 20070502  
Time 10.31  
INSTRUM AV400  
PROBHD 5 mm Multinucl  
PULPROG zg30  
TD 65536  
SOLVENT DMSO  
NS 8  
DS 2  
SWH 8278.146 Hz  
FIDRES 0.126314 Hz  
AQ 3.9584243 sec  
RG 362  
DW 60.400 usec  
DE 299.0 K  
TE 299.0 K  
D1 1.00000000 sec  
TDO 1

===== CHANNEL f1 =====  
NUC1 1H  
P1 15.00 usec  
PL1 0.50 dB  
SFO1 400.1324710 MHz

F2 - Processing parameters  
SI 32768  
SF 400.1300020 MHz  
WDW EM  
SSB 0  
LB 0.30 Hz  
GB 0  
PC 1.00

10  
9  
8  
7  
6  
5  
4  
3  
2  
1  
0 ppm

1.000  
0.919  
1.983  
1.099  
2.078  
0.986  
0.987  
0.993  
1.061  
1.011  
0.994  
1.563  
9.142  
6.024



Compound 28

166.44  
152.33  
151.00  
146.45  
134.04  
133.17  
130.73  
130.13  
129.35

85.92  
85.85  
73.13  
64.38  
40.14  
26.11  
18.51

-4.57  
-4.74



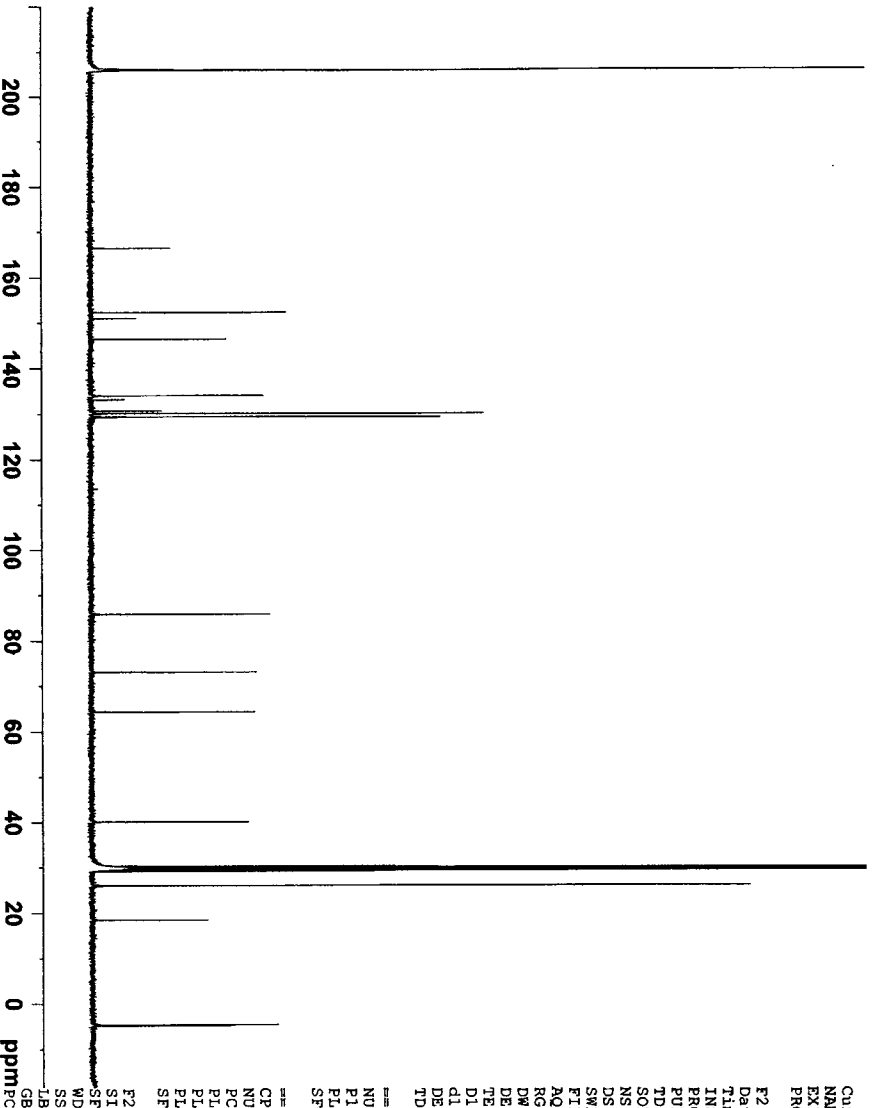
Current Data Parameters  
NAME 070502  
EXPNO 2  
PROCNO 1

F2 - Acquisition Parameters  
Date\_ 20070502  
Time 13.13  
INSTRUM AV400  
PROBHD 5 mm Multinucl  
PULPROG zgpg30  
TD 65536  
SOLVENT Acetone  
NS 1600  
DS 2  
SWH 23980.814 Hz  
FIDRES 0.365918 Hz  
AQ 1.3664756 sec  
RG 26008  
DW 20.850 usec  
DE 20.00 usec  
TE 299.0 K  
D1 2.00000000 sec  
d11 0.03000000 sec  
DELTA 1.89999998 sec  
TDO 1

===== CHANNEL f1 =====  
NUC1 13C  
P1 9.50 usec  
PL1 -2.00 dB  
SFO1 100.6228298 MHz

===== CHANNEL f2 =====  
CPDPRG2 waltz16  
NUC2 1H  
PCPD2 80.00 usec  
PL12 15.00 dB  
PL13 15.00 dB  
PL2 0.00 dB  
SFO2 400.1316005 MHz

F2 - Processing parameters  
SI 32768  
SF 100.6126830 MHz  
WDW EM  
SSB 0  
LB 0  
GB 1.00 Hz  
PC 1.40



8.739  
8.668  
6.441  
6.424  
6.407  
5.051  
5.037  
5.023  
4.629  
4.622  
4.615  
4.608  
3.882  
3.875  
3.870  
3.863  
3.629  
3.613  
3.600  
3.587  
3.537  
3.524  
3.512  
3.494  
2.902  
2.887  
2.883  
2.869  
2.854  
2.850  
2.836  
2.509  
2.491  
2.357  
2.349  
2.341  
2.333  
2.324  
2.315  
2.308  
2.300  
2.668  
2.500  
0.902  
0.116

Current Data Parameters  
NAME 060705  
EXPNO 1  
PROCNO 1

F2 - Acquisition Parameters

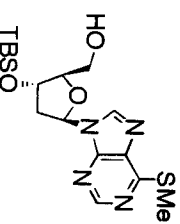
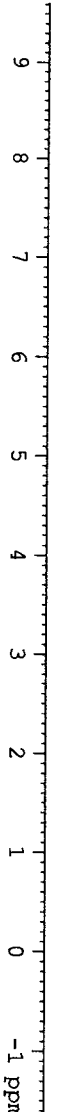
Date\_ 20070604  
Time 14.59  
INSTRUM av400  
PROBHD 5 mm Multinucl  
PULPROG zg30  
TD 65536  
SOLVENT DMSO  
NS 8  
DS 2  
SWH 8278.146 Hz  
FIDRES 0.126314 Hz  
AQ 3.9584243 sec  
RG 645.1  
DW 60.400 usec  
DE 6.50 usec  
TE 673.2 K  
D1 1.00000000 sec  
TDO 1

CHANNEL f1

NUC1 13C  
P1 15.00 usec  
PL1 0.50 dB  
SFO1 400.1324710 MHz

F2 - Processing parameters

SI 32768  
SF 400.1300024 MHz  
WDW EM  
SSB 0  
LB 0.30 Hz  
GB 0  
PC 1.00



Compound 29



162.267  
151.989  
148.577  
143.684  
133.172  
89.996  
86.532  
73.999  
62.981  
41.488  
26.134  
18.538  
11.561  
-4.635  
-4.703

Current Data Parameters  
NAME 070604  
EXPNO 1  
PROCNO 1

F2 - Acquisition Parameters

Date\_ 20070604  
Time 12.40  
INSTRUM av400  
PROBHD 5 mm Multinucl  
PULPROG zgpg30  
TD 65536  
SOLVENT Acetone  
NS 1600  
DS 2  
SWH 23980.814 Hz  
FIDRES 0.365918 Hz  
AQ 1.3664756 sec  
RG 26008  
DW 20.850 usec  
DE 20.00 usec  
TE 297.8 K  
D1 2.00000000 sec  
d11 0.03000000 sec  
DELTA 1.89999998 sec  
TDO 1

CHANNEL f1

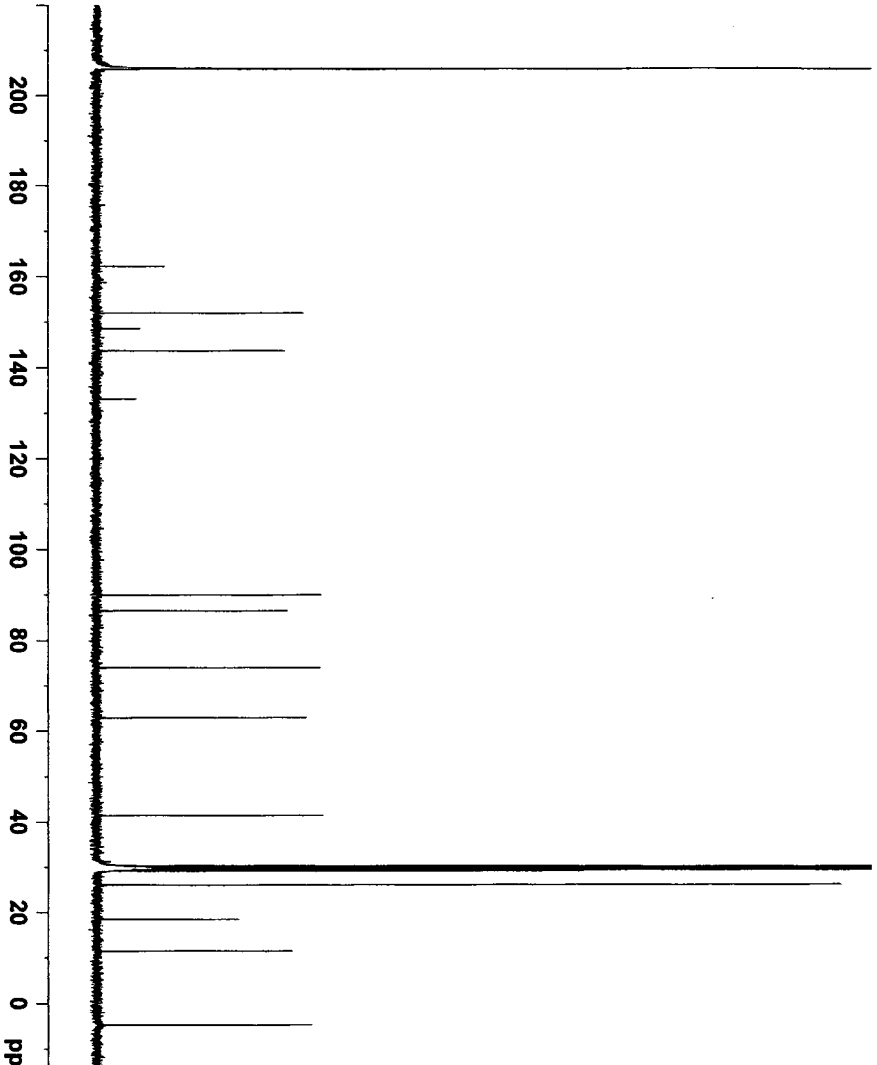
NUC1 13C  
P1 9.50 usec  
PL1 -2.00 dB  
SFO1 100.6228238 MHz

CHANNEL f2

CPDPRG2 waltz16  
NUC2 1H  
PCPD2 80.00 usec  
PLI2 15.00 dB  
PLI3 15.00 dB  
PLI2 0.00 dB  
SFO2 400.1316005 MHz

F2 - Processing parameters

SI 32768  
SF 100.6126828 MHz  
WDW EM  
SSB 0  
LB 1.00 Hz  
GB 0  
PC 1.40



**BRUKER**

Current Data Parameters  
NAME 060709  
EXPNO 2  
PROCNO 1

F2 - Acquisition Parameters

Date\_ 20060710  
Time 15.34  
INSTRUM av400  
PROBHD 5 mm PABBO BB-  
PULPROG zg30  
TD 65536  
SOLVENT DMSO  
NS 80  
DS 2  
SWH 8278.146 Hz  
FIDRES 0.126314 Hz  
AQ 3.9584243 sec  
RG 724.1  
DE 60.400 usec  
TE 297.8 K  
D1 1.00000000 sec  
TD0 1

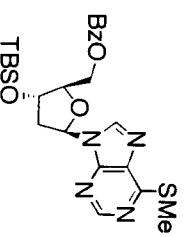
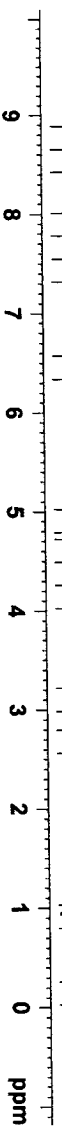
==== CHANNEL F1 =====

NUC1 1H  
P1 14.00 usec  
PL1 0.00 dB  
SFO1 400.2324716 MHz

F2 - Processing parameters

SI 32768  
SF 400.2299983 MHz  
WDW EM  
SSB 0  
GB 0  
PC 1.00

8.683  
8.637  
7.865  
7.863  
7.845  
7.842  
7.672  
7.669  
7.651  
7.635  
7.632  
7.629  
7.503  
7.483  
7.464  
6.475  
6.459  
6.443  
4.932  
4.921  
4.906  
4.895  
4.573  
4.561  
4.543  
4.531  
4.430  
4.417  
4.400  
4.387  
4.186  
4.175  
4.164  
4.152  
3.128  
3.112  
3.095  
3.079  
3.064  
2.659  
  
0.899  
  
0.124  
0.118



Compound 30



Current Data Parameters  
NAME 070501  
EXPNO 1  
PROCNO 1

F2 - Acquisition Parameters

Date\_ 20070501  
Time 13.02  
INSTRUM av400  
PROBHD 5 mm Multinuc1  
PULPROG zgpg30  
TD 65536  
SOLVENT Acetone  
NS 1360  
DS 2  
SWH 23980.814 Hz  
FIDRES 0.365918 Hz  
AQ 1.3664756 sec  
RG 29193  
DE 20.850 usec  
TE 298.8 K  
D1 2.00000000 sec  
D11 0.03000000 sec  
DELTA 1.89999999 sec  
TD0 1

==== CHANNEL F1 =====

NUC1 13C  
P1 9.50 usec  
PL1 -2.00 dB  
SFO1 100.6228298 MHz

==== CHANNEL F2 =====

CPDPRG2 waltz16  
NUC2 1H  
PCPD2 80.00 usec  
PL12 15.00 dB  
PL13 15.00 dB  
PL12 0.00 dB  
SFO2 400.1316005 MHz

F2 - Processing parameters

SI 32768  
SF 100.6126831 MHz  
WDW EM  
SSB 0  
GB 0  
PC 1.40

166.468  
161.933  
  
152.329  
148.776  
143.677  
134.000  
132.959  
130.770  
130.158  
129.344

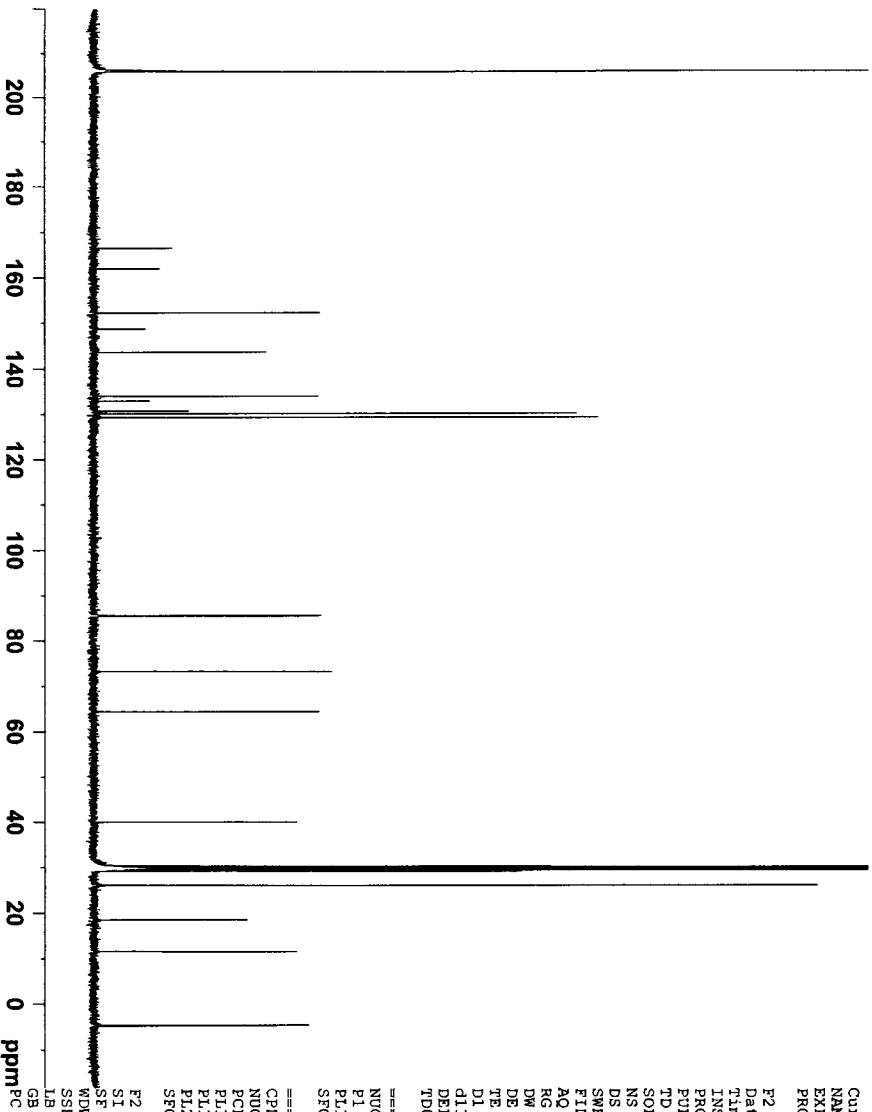
85.665  
85.526

73.249  
64.470

40.051

26.120  
18.513  
11.543

-4.567  
-4.738







Current Data Parameters  
 NAME 070306  
 EXPNO 1  
 PROCNO 1

F2 - Acquisition Parameters

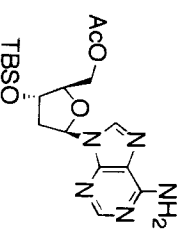
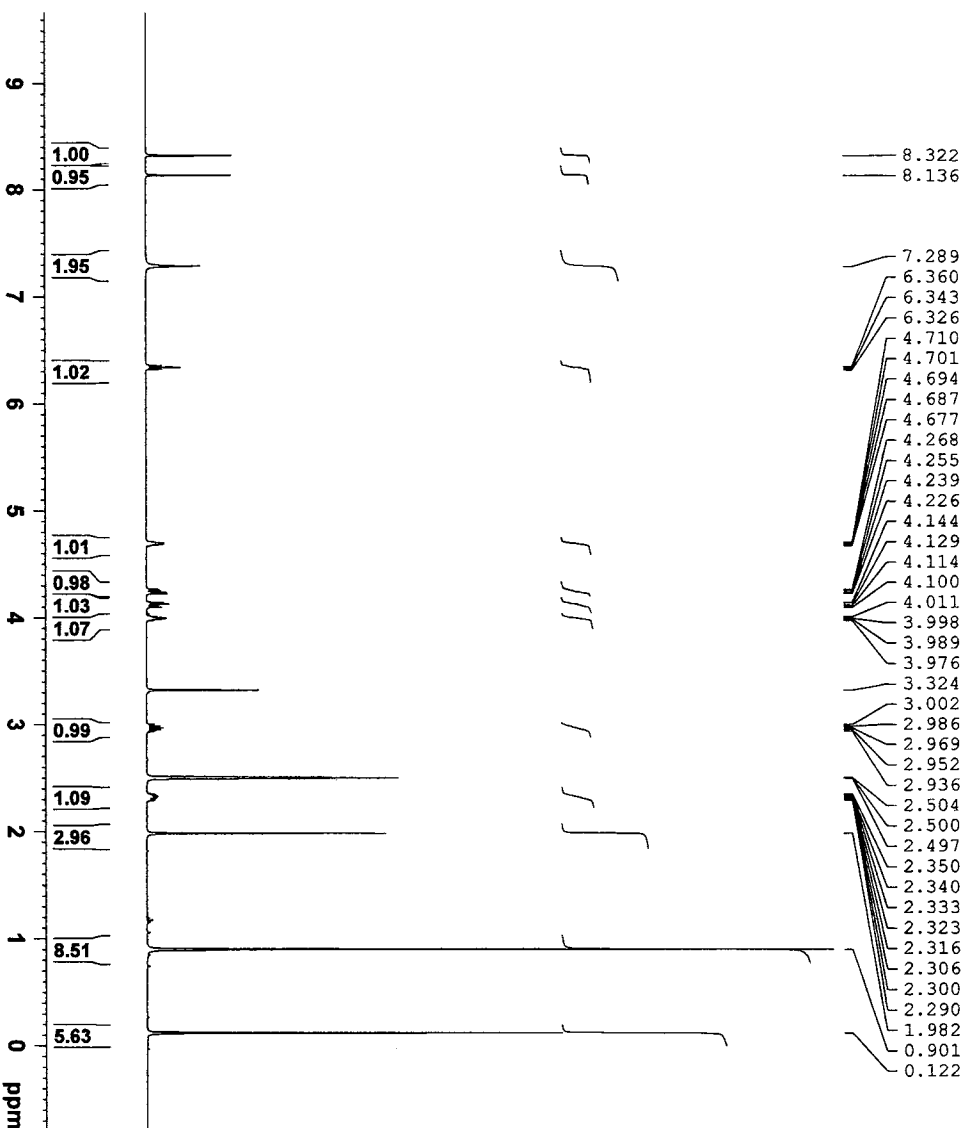
Date\_ 20070306  
 Time 11:07  
 INSTRUM 5 mm PABBO BR-  
 PROBDH 29330  
 PULPROG zg30  
 TD 65536  
 SOLVENT DMSO  
 NS 8  
 DS 2  
 SWH 8278.146 Hz  
 FIDRES 0.126314 Hz  
 AQ 3.9584243 sec  
 RG 362  
 DM 60.400 usec  
 DE 6.50 usec  
 TE 296.1 K  
 D1 1.00000000 sec  
 TD0 1

CHANNEL F1

NUC1 1H  
 P1 14.00 usec  
 PL1 0.00 dB  
 SFO1 400.2324716 MHz

F2 - Processing parameters

SI 32768  
 SF 400.2239969 MHz  
 WDM EM  
 SSB 0  
 LB 0.30 Hz  
 GB 0  
 PC 1.00



Compound 34



Current Data Parameters  
 NAME 070427  
 EXPNO 2  
 PROCNO 1

F2 - Acquisition Parameters

Date\_ 20070427  
 Time 16:39  
 INSTRUM av400  
 PROBDH 5 mm Multinuc1  
 PULPROG zgpg30  
 TD 65536  
 SOLVENT DMSO  
 NS 1360  
 DS 2  
 SWH 23980.814 Hz  
 FIDRES 0.365918 Hz  
 AQ 1.3664756 sec  
 RG 32768  
 DW 20.850 usec  
 DE 20.00 usec  
 TE 673.2 K  
 D1 2.00000000 sec  
 d11 0.03000000 sec  
 DELTA 1.89999998 sec  
 TD0 1

CHANNEL F1

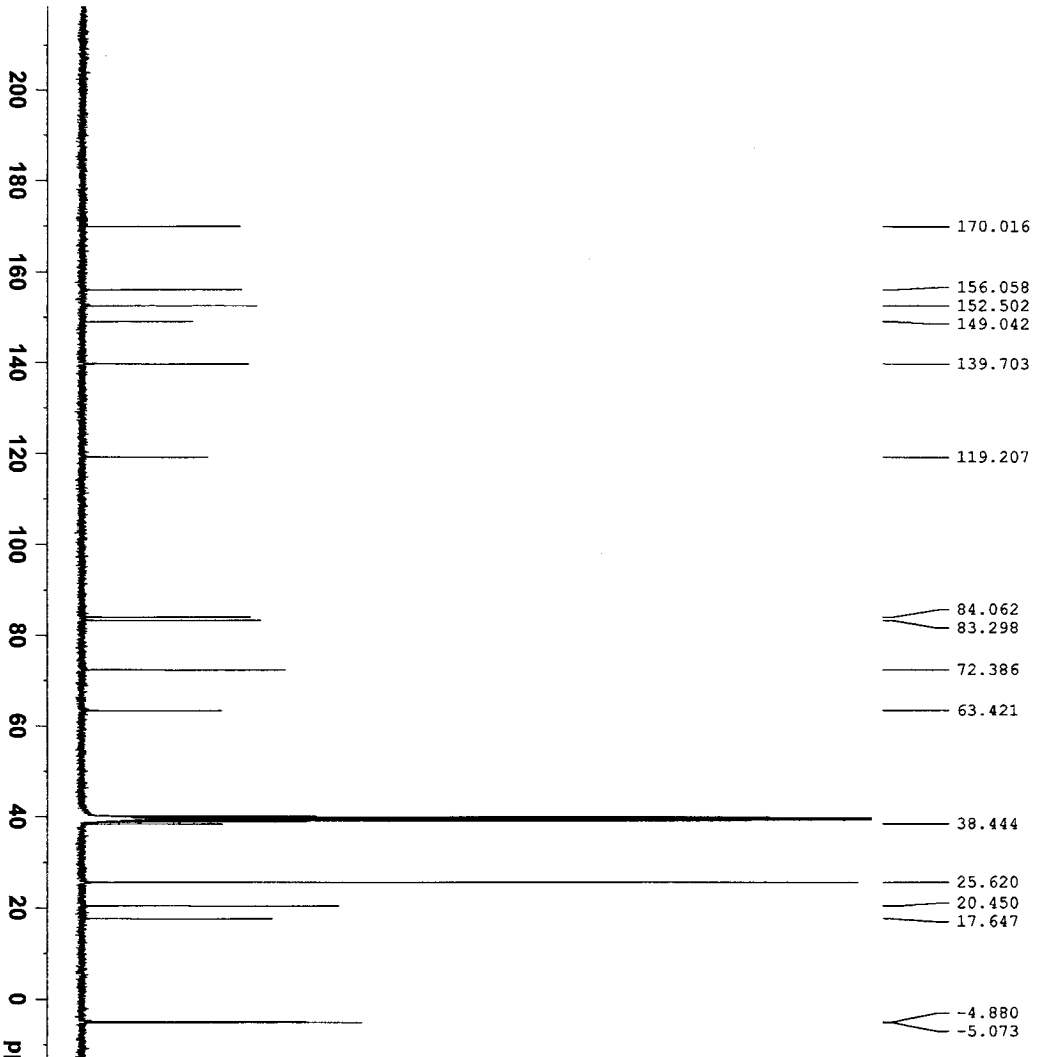
NUC1 13C  
 P1 9.50 usec  
 PL1 -2.00 dB  
 SFO1 100.6228298 MHz

CHANNEL F2

waitz16  
 NUC2 1H  
 PCPD2 80.00 usec  
 PL12 15.00 dB  
 PL13 15.00 dB  
 F2 0.00 dB  
 SFO2 400.1316005 MHz

F2 - Processing parameters

SI 32768  
 SF 100.6128197 MHz  
 WDM EM  
 SSB 0  
 LB 1.00 Hz  
 GB 0  
 PC 1.40



10.141  
8.688  
8.644  
6.462  
6.446  
6.444  
6.428  
5.067  
5.053  
5.040  
4.647  
4.639  
4.633  
4.626  
4.619  
3.902  
3.895  
3.890  
3.883  
3.878  
3.871  
3.647  
3.633  
3.617  
3.604  
3.591  
3.545  
3.532  
3.519  
3.502  
3.490  
2.925  
2.911  
2.906  
2.892  
2.877  
2.873  
2.859  
2.366  
2.357  
2.350  
2.342  
2.332  
2.325  
2.317  
2.309  
1.276  
0.910  
0.124

Current Data Parameters  
NAME 070427  
EXPNO 1  
PROCNO 1

F2 - Acquisition Parameters

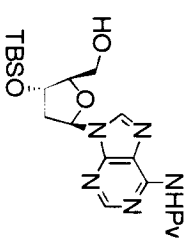
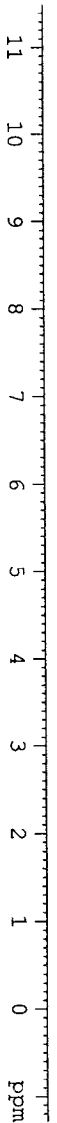
Date\_ 20070427  
Time 15.04  
INSTRUM 5 mm Multinuc1  
PROBHD av400  
PULPROG zg30  
TD 65536  
SOLVENT DMSO  
NS 8  
DS 2  
SWH 8278.146 Hz  
FIDRES 0.126314 Hz  
AQ 3.9584243 sec  
RG 362  
DW 60.400 usec  
DE 6.50 usec  
TE 673.2 K  
D1 1.00000000 sec  
TD0 1

CHANNEL f1

NUC1 1H  
P1 15.00 usec  
PL1 0.50 dB  
SFO1 400.1324710 MHz

F2 - Processing parameters

SI 32768  
SF 400.1300020 MHz  
WDW EM  
SSB 0  
LB 0.30 Hz  
GB 0  
PC 1.00



Compound 36

176.004  
152.174  
151.260  
143.700  
126.054  
89.981  
86.484  
74.018  
62.975  
41.356  
40.663  
27.459  
26.119  
18.517  
-4.648  
-4.716



Current Data Parameters  
NAME 070412  
EXPNO 1  
PROCNO 1

F2 - Acquisition Parameters

Date\_ 20070412  
Time 19.06  
INSTRUM av400  
PROBHD 5 mm Multinuc1  
PULPROG zgpg30  
TD 65536  
SOLVENT Acetone  
NS 1000  
DS 2  
SWH 23980.814 Hz  
FIDRES 0.365918 Hz  
AQ 1.3664756 sec  
RG 26008  
RC 20.850 usec  
DE 20.00 usec  
TE 295.9 K  
D1 2.00000000 sec  
d11 0.03000000 sec  
DELTA 1.89999998 sec  
TD0 1

CHANNEL f1

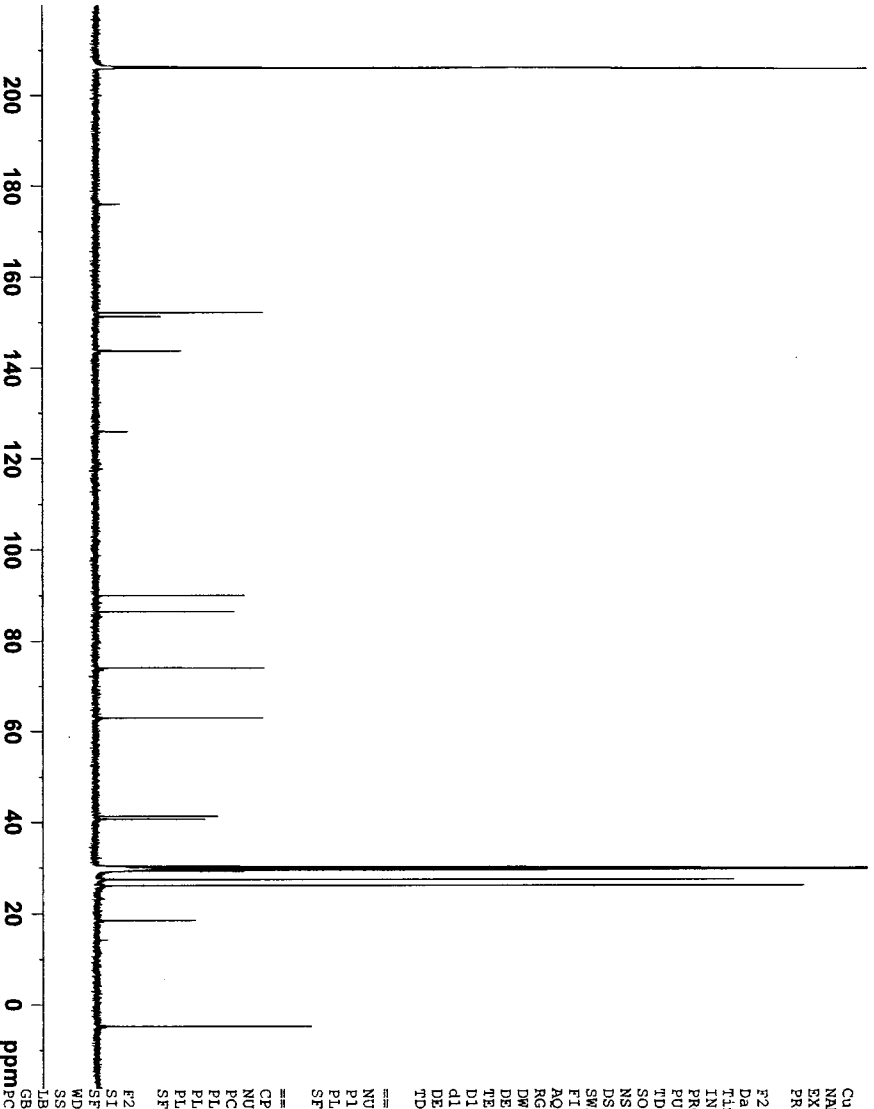
NUC1 13C  
P1 9.50 usec  
PL1 -2.00 dB  
SFO1 100.6228298 MHz

CHANNEL f2

CPDPRG2 waltz16  
NUC2 1H  
PCPD2 80.00 usec  
P1 15.00 dB  
PL1 15.00 dB  
PL2 0.00 dB  
SFO2 400.1316005 MHz

F2 - Processing parameters

SI 32768  
SF 100.6126863 MHz  
WDW EM  
SSB 0  
LB 1.00 Hz  
GB 0  
PC 1.40



- 10.137
- 8.672
- 8.581
- 7.344
- 7.326
- 7.324
- 7.307
- 7.292
- 7.276
- 7.270
- 6.472
- 6.456
- 6.439
- 4.695
- 4.686
- 4.679
- 4.672
- 4.663
- 4.514
- 4.030
- 4.019
- 4.009
- 3.998
- 3.699
- 3.687
- 3.672
- 3.660
- 3.593
- 3.581
- 3.567
- 3.554
- 2.972
- 2.956
- 2.939
- 2.923
- 2.907
- 2.500
- 2.402
- 2.392
- 2.386
- 2.376
- 2.369
- 2.359
- 2.353
- 2.343
- 1.280
- 0.889
- 0.103
- 0.095



Current Data Parameters  
 NAME 070413  
 EXPNO 2  
 PROCNO 1

F2 - Acquisition Parameters

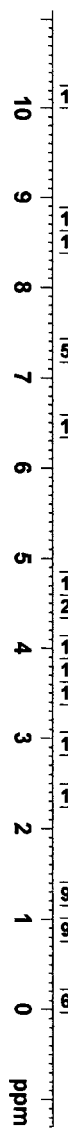
Date\_ 20070413  
 Time 19.12  
 INSTRUM av400  
 PROBHD 5 mm PABBO BB-  
 PULPROG zg30  
 TD 65536  
 SOLVENT DMSO  
 NS 8  
 DS 2  
 SMH 8278.146 Hz  
 FIDRES 0.126314 Hz  
 AQ 3.984243 sec  
 RG 256  
 DE 60.400 usec  
 TE 299.2 K  
 D1 1.00000000 sec  
 TDO 1

CHANNEL F1

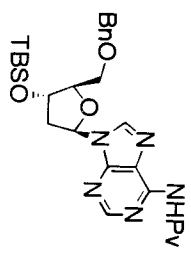
NUC1 1H  
 P1 14.00 usec  
 PL1 0.00 dB  
 SFO1 400.2324716 MHz

F2 - Processing parameters

SF 32768 MHz  
 WDW EM  
 SSB 0  
 LB 0.30 Hz  
 GB 0  
 PC 1.00



Compound 37



- 175.937
- 152.519
- 150.990
- 142.974
- 139.218
- 129.095
- 128.407
- 128.321
- 125.639
- 87.365
- 85.144
- 73.803
- 73.768
- 70.615
- 41.036
- 40.652
- 27.525
- 26.136
- 18.508
- 4.590
- 4.702



Current Data Parameters  
 NAME 070414  
 EXPNO 1  
 PROCNO 1

F2 - Acquisition Parameters

Date\_ 20070414  
 Time 13.17  
 INSTRUM av400  
 PROBHD 5 mm Multinuc1  
 PULPROG zgpg30  
 TD 65536  
 SOLVENT Acetone  
 NS 1600  
 DS 2  
 SMH 23980.814 Hz  
 FIDRES 0.365918 Hz  
 AQ 1.3664756 sec  
 RG 1.3664756 sec  
 DE 26008  
 DM 20.850 usec  
 TE 299.2 K  
 D1 2.00000000 sec  
 D11 0.03000000 sec  
 DELTA 1.899999998 sec  
 TDO 1

CHANNEL F1

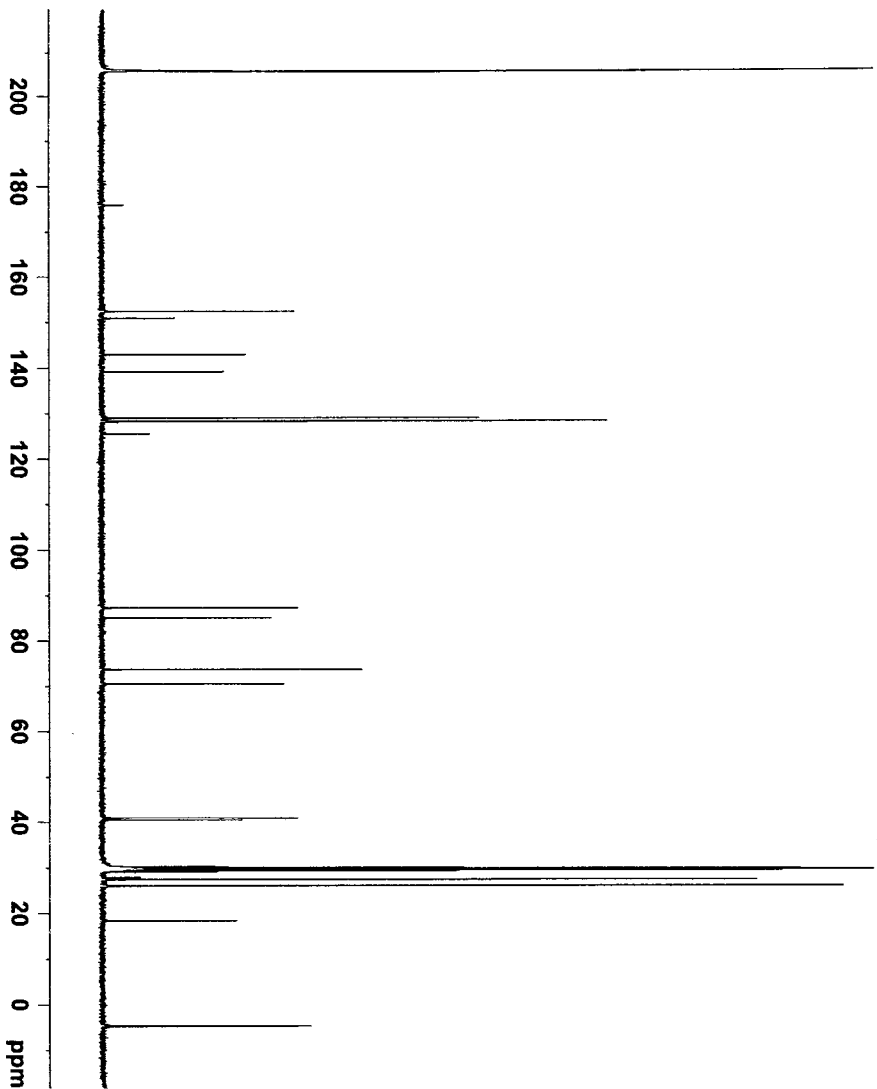
NUC1 13C  
 P1 9.50 usec  
 PL1 -2.00 dB  
 SFO1 100.6228298 MHz

CHANNEL F2

CPDPRG2 waltz16  
 NUC2 1H  
 FOPD2 80.00 usec  
 PL12 15.00 dB  
 PL13 15.00 dB  
 PL2 0.00 dB  
 SFO2 400.1316005 MHz

F2 - Processing parameters

SF 32768 MHz  
 WDW EM  
 SSB 0  
 LB 1.00 Hz  
 GB 0  
 PC 1.40



**BRUKER**

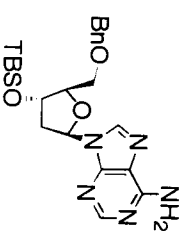
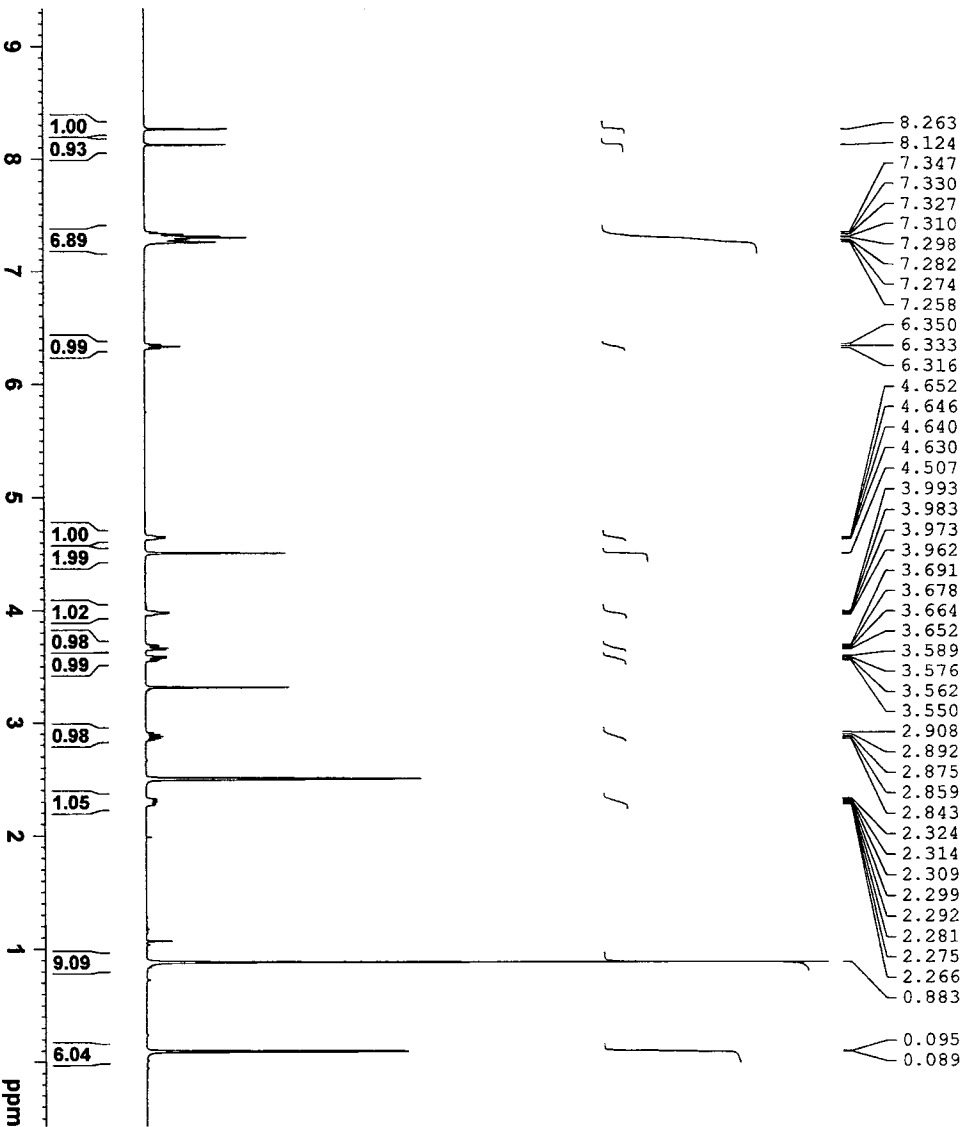
Current Data Parameters  
NAME 070417  
EXPNO 1  
PROCNO 1

F2 - Acquisition Parameters  
Date\_ 20070417  
Time 14.10

INSTRUM av400  
PROBHD 5 mm PABBO BH-  
PULPROG zg30  
TD 65536  
SOLVENT DMSO  
NS 8  
DS 2  
SWH 8278.146 Hz  
FIDRES 0.126314 Hz  
AQ 3.9584243 sec  
RG 456.1  
DM 60.400 usec  
DE 6.30 usec  
TE 298.8 K  
D1 1.00000000 sec  
TD0 1

CHANNEL F1 =====  
NUC1 1H  
P1 14.00 usec  
PL 0.00 dB  
SFO1 400.2324716 MHz

F2 - Processing parameters  
SI 32768  
SF 400.2239975 MHz  
WDW EM  
SSB 0  
LB 0.30 Hz  
GB 0  
PC 1.00



Compound 38



Current Data Parameters  
NAME 070417  
EXPNO 1  
PROCNO 1

F2 - Acquisition Parameters  
Date\_ 20070417  
Time 17.12  
INSTRUM av400  
PROBHD 5 mm Multinucl  
PULPROG zgpg30  
TD 65536  
SOLVENT MeOD  
NS 1440  
DS 2  
SWH 23980.814 Hz  
FIDRES 0.365918 Hz  
AQ 1.3664756 sec  
RG 26008  
DM 20.850 usec  
DE 20.00 usec  
TE 673.2 K  
D1 2.00000000 sec  
d11 0.03000000 sec  
DELTA 1.899999998 sec  
TD0 1

CHANNEL F1 =====  
NUC1 13C  
P1 9.50 usec  
PL1 -2.00 dB  
SFO1 100.6228298 MHz

CHANNEL F2 =====  
CPDPRG2 waltz16  
NUC2 1H  
PCPD2 80.00 usec  
P12 15.00 dB  
PL13 15.00 dB  
PL12 0.00 dB  
SFO2 400.1316005 MHz

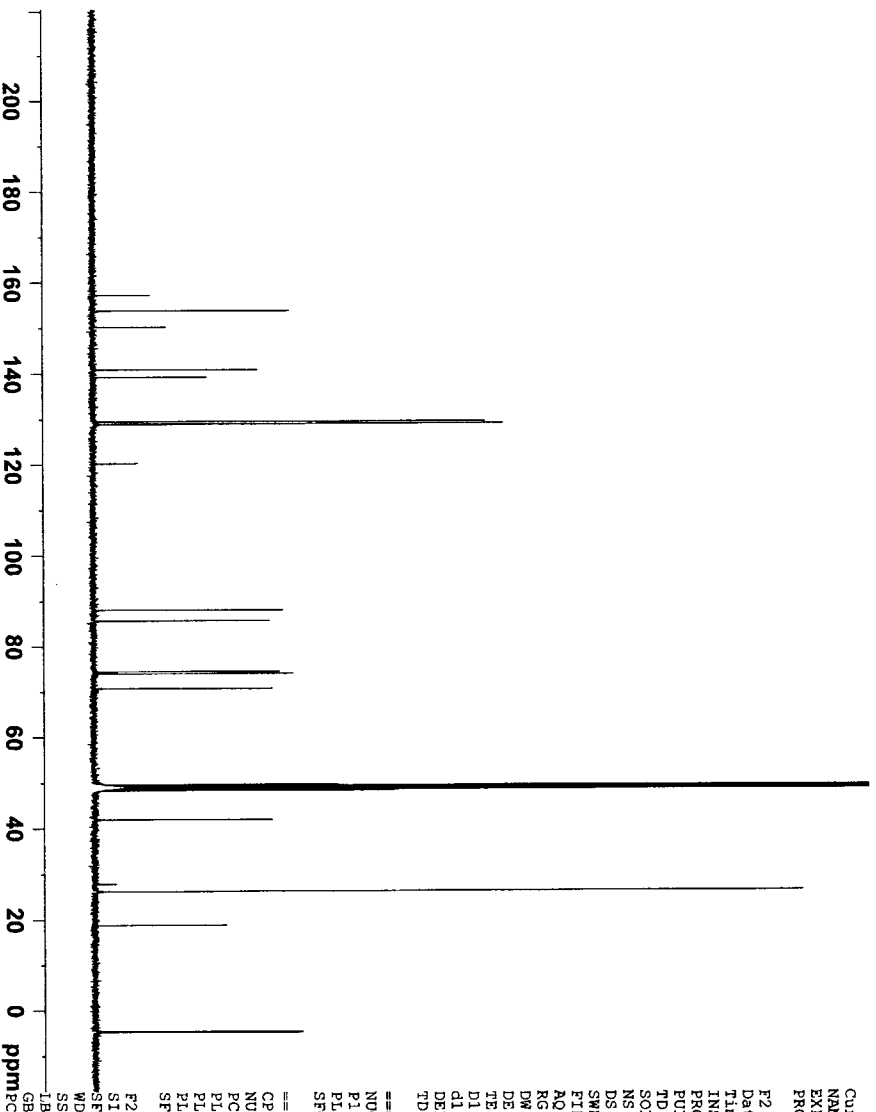
F2 - Processing parameters  
SI 32768  
SF 100.6126286 MHz  
WDW EM  
SSB 0  
LB 1.00 Hz  
GB 0  
PC 1.40

157.27  
153.79  
150.24  
140.84  
139.23  
129.47  
128.99  
128.87  
120.28

88.08  
85.70  
74.46  
74.06  
70.74

41.98  
26.25  
18.83

-4.61  
-4.72



8.2932  
8.1362  
7.2634  
6.3478  
6.3310  
6.3142  
5.9004  
5.8873  
5.8742  
5.8572  
5.8441  
5.8310  
5.2585  
5.2539  
5.2495  
5.2154  
5.2106  
5.1523  
5.1474  
5.1295  
5.1260  
5.1212  
5.1177  
4.6327  
4.6247  
4.6186  
3.9777  
3.9739  
3.9700  
3.9646  
3.9606  
3.9568  
3.9464  
3.9423  
3.9338  
3.6329  
3.6202  
3.6064  
3.5939  
3.5406  
3.5278  
3.5141  
3.5014  
2.8848  
2.8671  
2.8494  
2.3271  
2.3177  
2.3111  
2.3016  
2.2941  
2.2847  
0.8989  
0.1124

Current Data Parameters  
NAME 070609  
EXPNO 1  
PROCNO 1

F2 - Acquisition Parameters

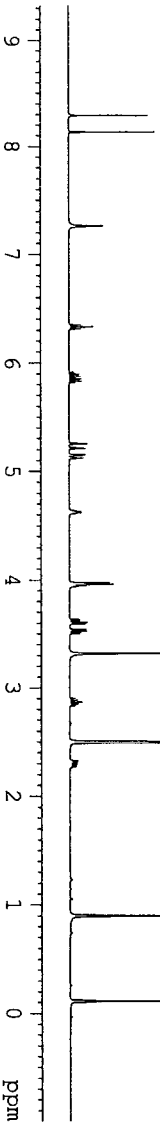
Date\_ 20070613  
Time 11.54  
INSTRUM 5 mm Multinuc1  
PROBHD av400  
PULPROG zg30  
TD 65536  
SOLVENT DMSO  
NS 16  
DS 2  
SWH 8278.146 Hz  
FIDRES 0.126314 Hz  
AQ 3.9584243 sec  
RG 362  
DW 60.400 usec  
DE 6.50 usec  
TE 298.4 K  
D1 1.00000000 sec  
TDO 1

CHANNEL F1

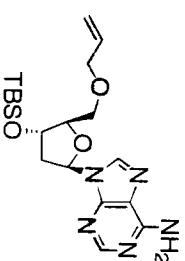
NUC1 1H  
P1 15.00 usec  
PL1 0.30 dB  
SFO1 400.1324710 MHz

F2 - Processing parameters

SI 32768  
SF 400.1300020 MHz  
WDW EM  
SSB 0  
LB 0.30 Hz  
GB 0  
PC 1.00



157.292  
153.815  
150.243  
140.854  
135.749  
120.289  
117.539  
87.996  
85.663  
73.950  
73.345  
70.814  
41.988  
26.251  
18.849  
-4.614  
-4.727



Compound 41

**BRUKER**

Current Data Parameters  
NAME 070613  
EXPNO 1  
PROCNO 1

F2 - Acquisition Parameters

Date\_ 20070613  
Time 19.47  
INSTRUM av400  
PROBHD 5 mm Multinuc1  
PULPROG zgpg30  
TD 65536  
MeOD MeOD  
SOLVENT NS  
DS 2  
SWH 23980.814 Hz  
FIDRES 0.365918 Hz  
AQ 1.3664756 sec  
RG 26008  
DW 20.850 usec  
DE 20.00 usec  
TE 298.1 K  
D1 2.00000000 sec  
d11 0.03000000 sec  
DELTA 1.89999998 sec  
TDO 1

CHANNEL F1

NUC1 13C  
P1 9.50 usec  
PL1 -2.00 dB  
SFO1 100.6228298 MHz

CHANNEL F2

waitz15  
NUC2 1H  
RGPD 80.00 usec  
P1I2 15.00 dB  
P1I3 15.00 dB  
P1I4 0.00 dB  
SFO2 400.1316005 MHz

F2 - Processing parameters

SI 32768  
SF 100.6126280 MHz  
WDW EM  
SSB 0  
LB 1.00 Hz  
GB 0  
PC 1.40

