

Analytical and Bioanalytical Chemistry

Electronic Supplementary Material

Validation of an LC-MS/MS based dilute-and-shoot approach for the quantification of >500 mycotoxins and other secondary metabolites in food crops: challenges and solutions

Michael Sulyok, David Stadler, David Steiner, Rudolf Krska

Additional files available under [10.1007/s00216-020-02489-9](https://doi.org/10.1007/s00216-020-02489-9)

Fig. S1 Correlation of recoveries of extraction with retention time

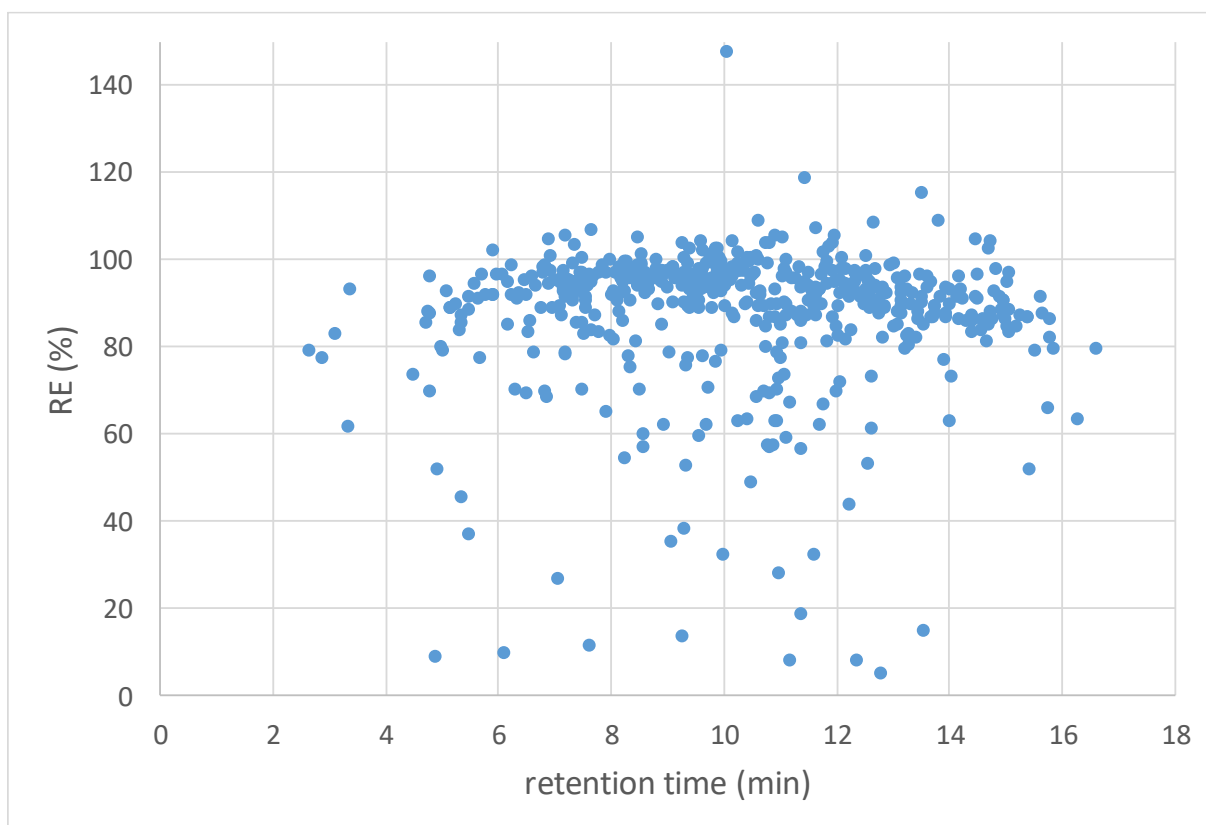


Fig. S1a Correlation of recoveries of extraction obtained in maize with retention time

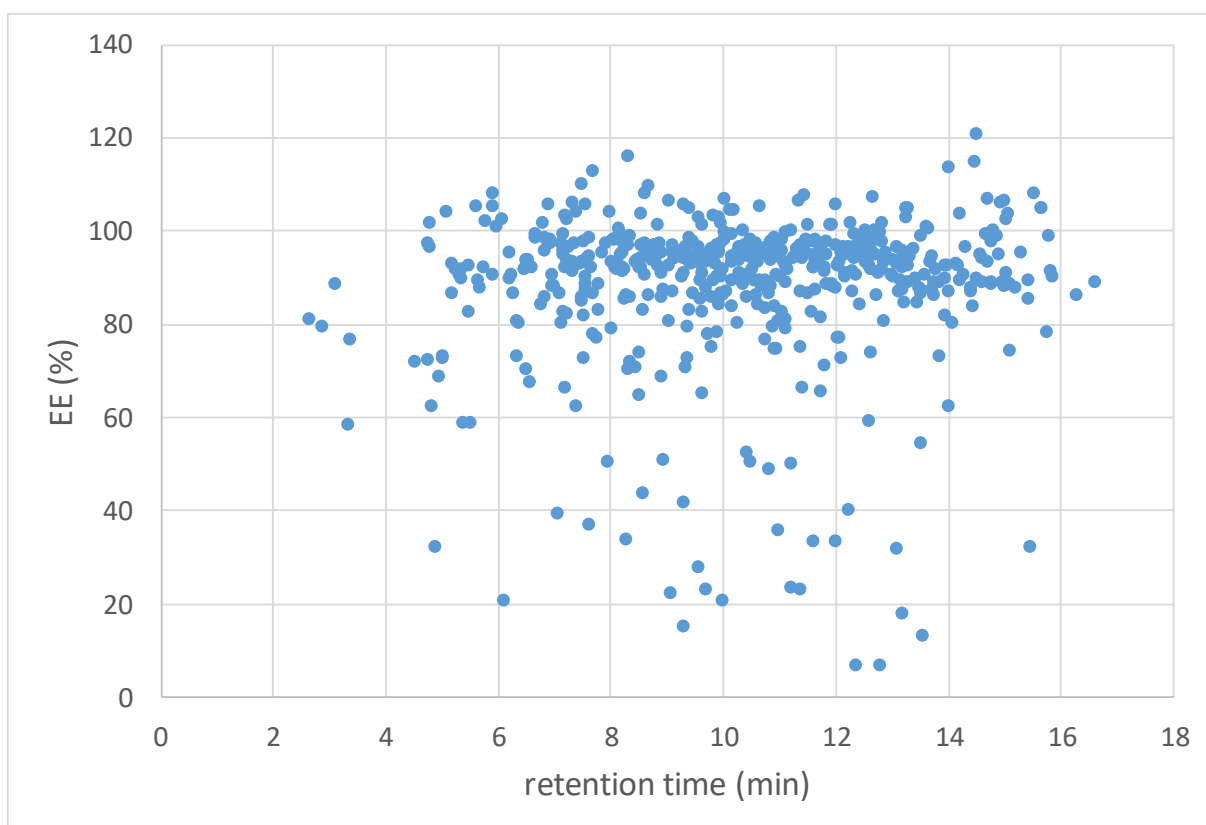


Fig. S1b Correlation of recoveries of extraction obtained in wheat with retention time

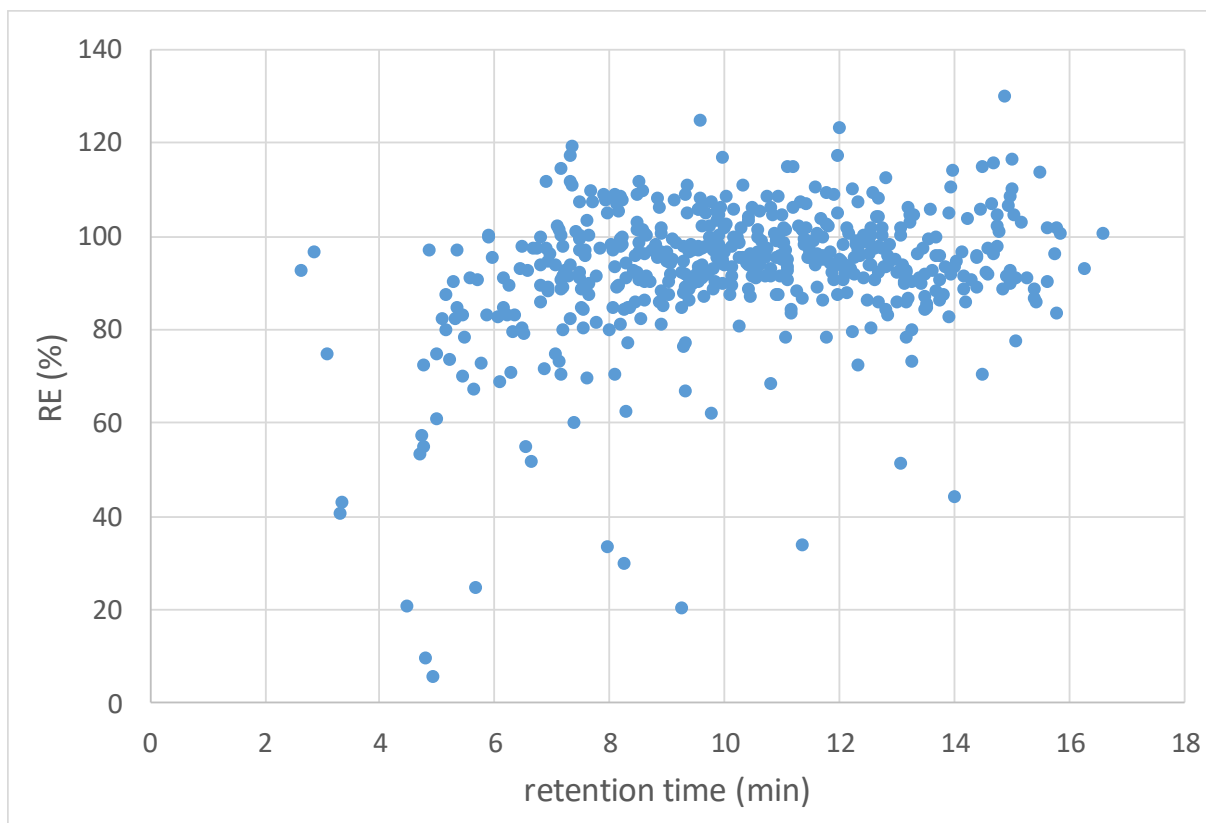


Fig. S1c Correlation of recoveries of extraction obtained in grapes with retention time

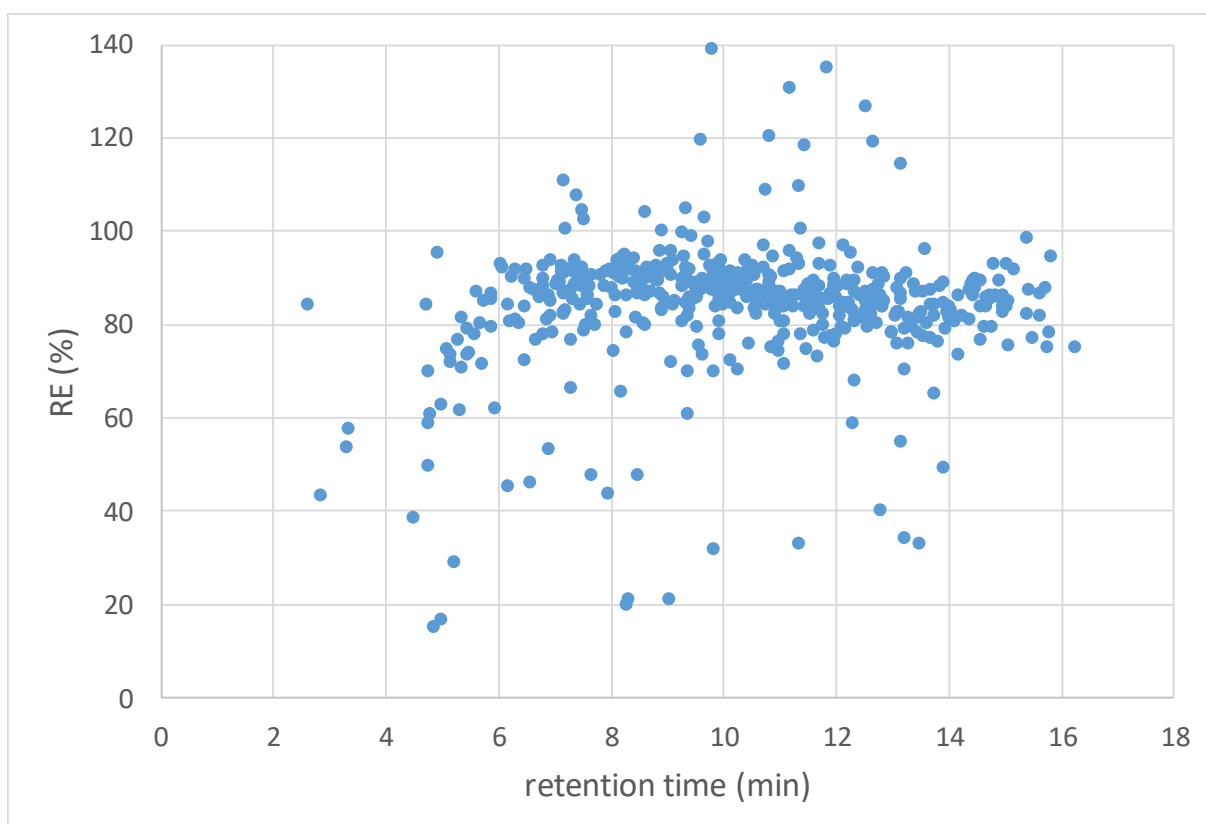


Fig. S1d Correlation of recoveries of extraction obtained in figs with retention time

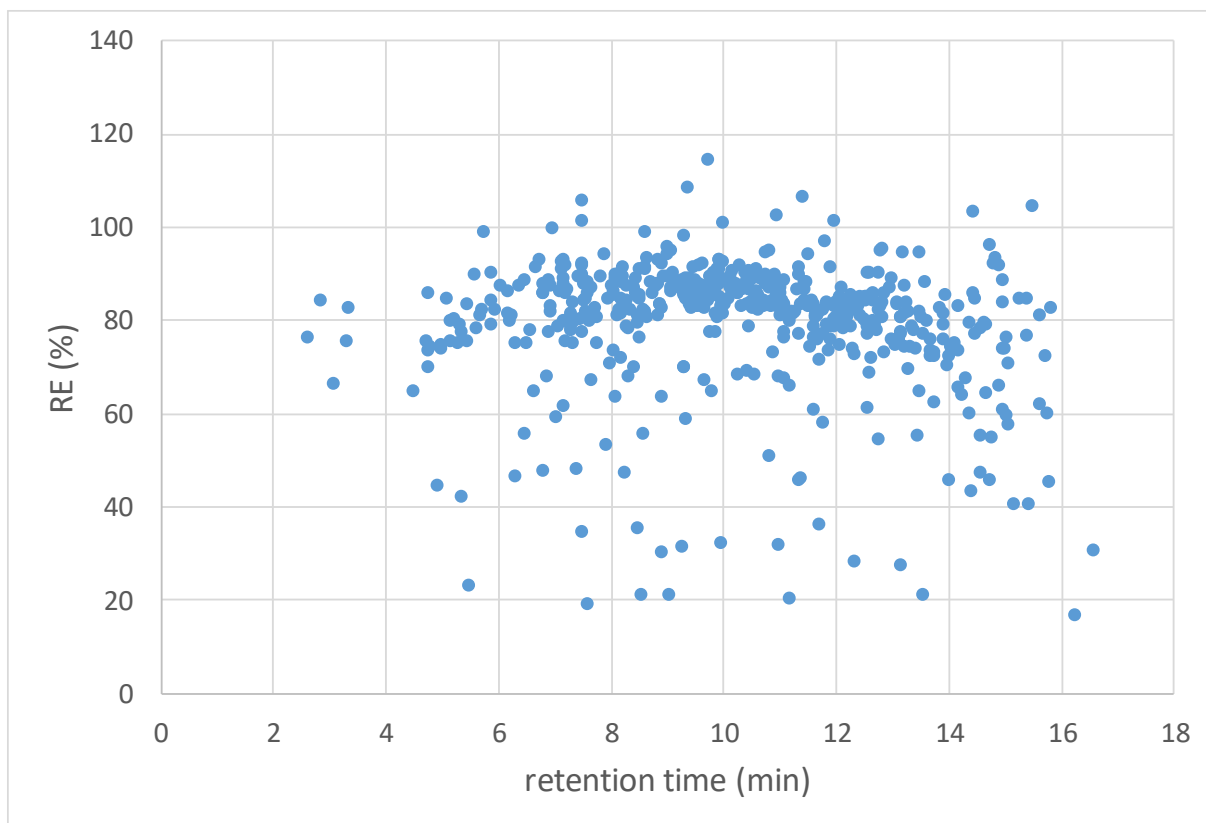


Fig. S1e Correlation of recoveries of extraction obtained in walnuts with retention time

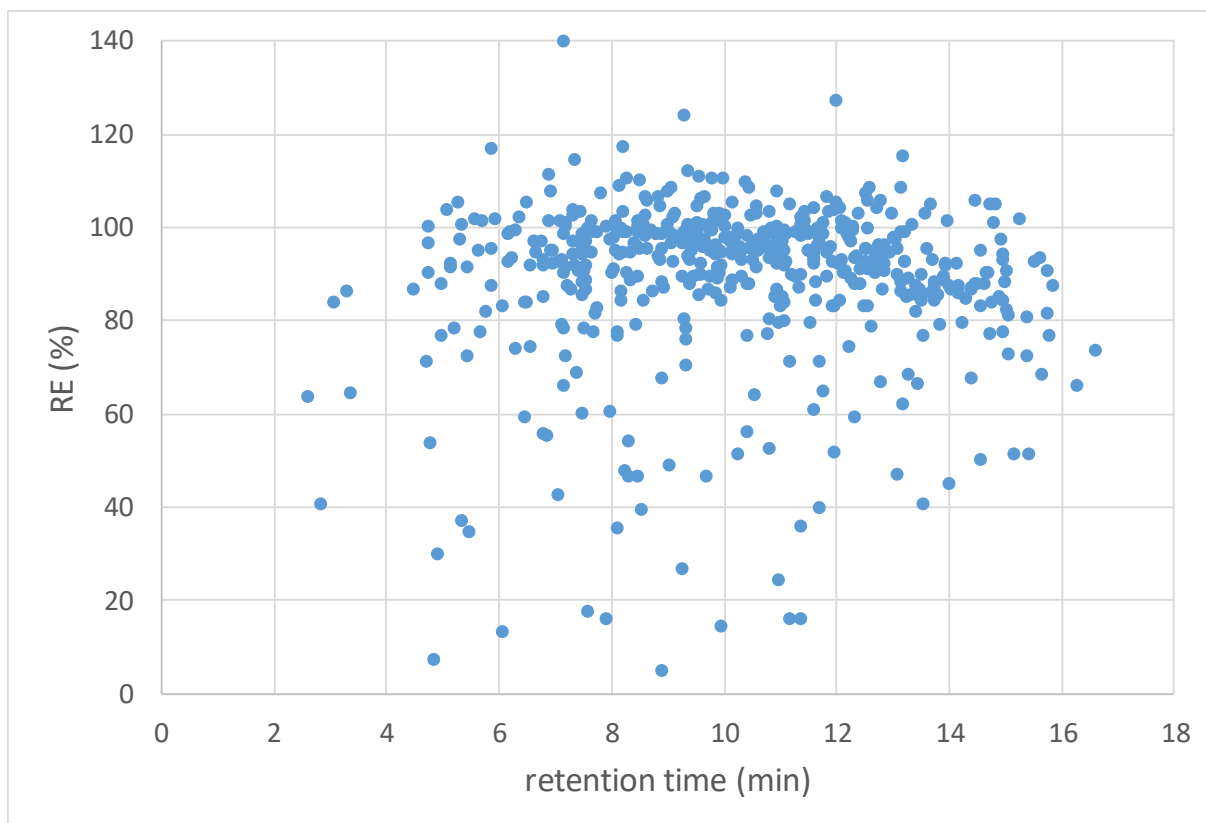


Fig. S1f Correlation of recoveries of extraction obtained in almonds with retention time