

Fig. 1B; TREM2; 12 % Tris Glycine

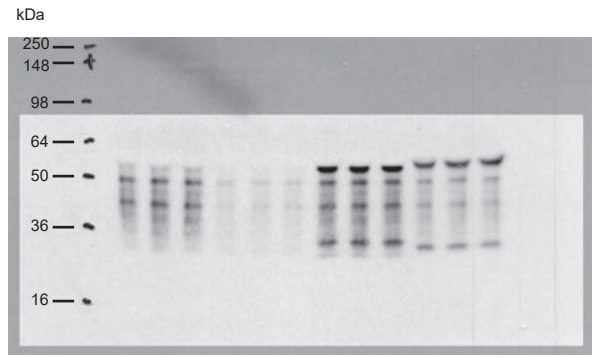


Fig. 1C; TREM2; 10 % Tris Glycine

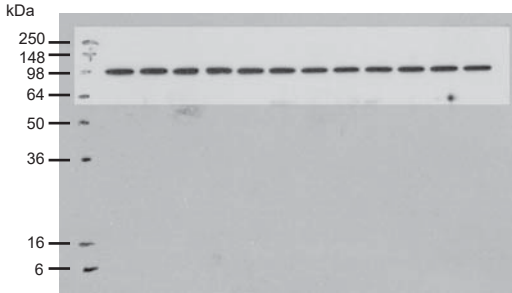
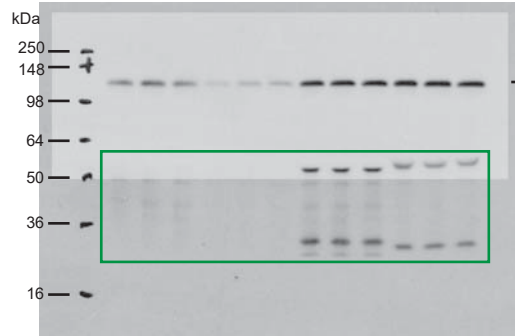


Fig. 1B; calnexin; 12 % Tris Glycine



Upon probing for TREM2 the same membrane was re-probed using the anti-sAPP α antibody. Because of re-probing some residual TREM2 signal is detectable (green box).

Fig. 1C; sAPP α ; 10 % Tris Glycine

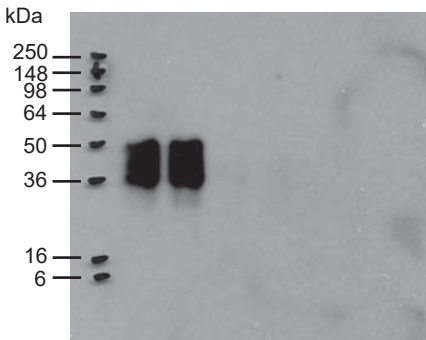


Fig. 1F
TREM2 (human)
12 % Tris Glycine

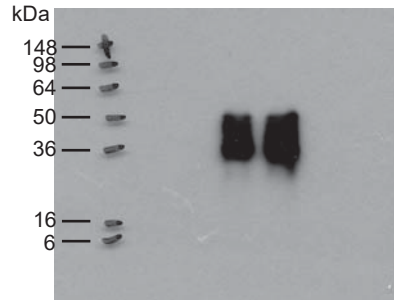


Fig. 1F
TREM2 (mouse)
12 % Tris Glycine

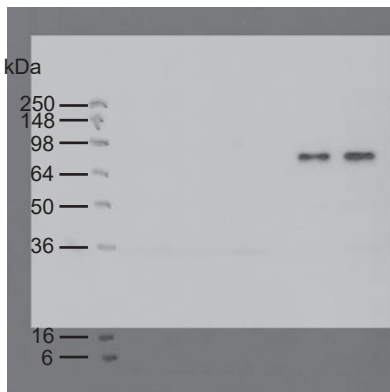


Fig. 1F
TREM1 (mouse)
12 % Tris Glycine