

Fig. 3B; TREM2; 12 % Tris Glycine

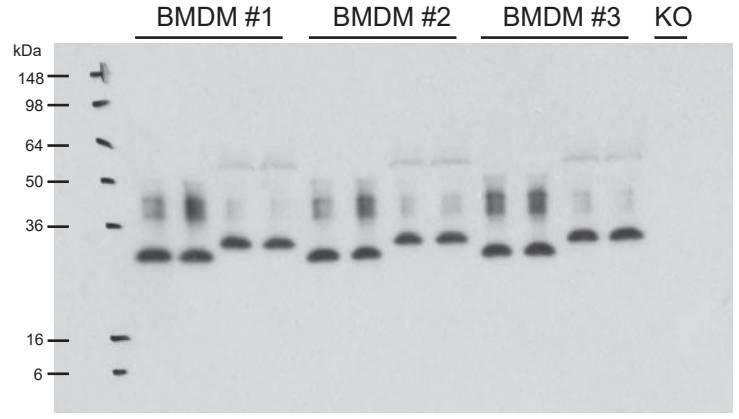


Fig. 3C; TREM2; 12 % Tris Glycine

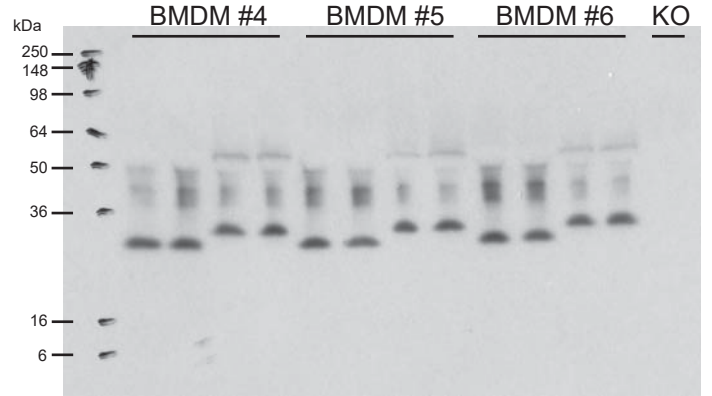


Fig. 3C; TREM2; 12 % Tris Glycine

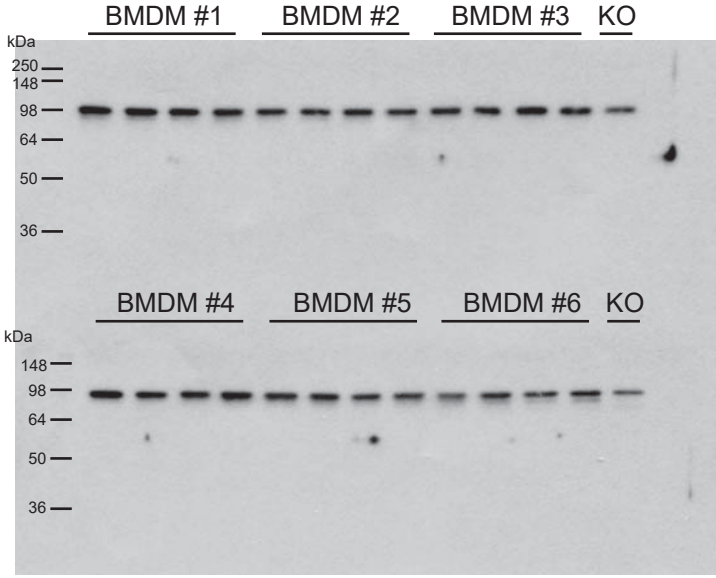


Fig. 3B; calnexin; 12 % Tris Glycine

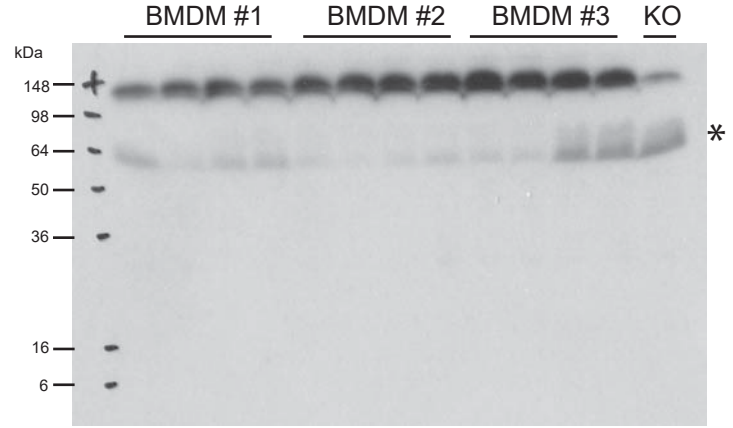


Fig. 3C; APPs; 12 % Tris Glycine

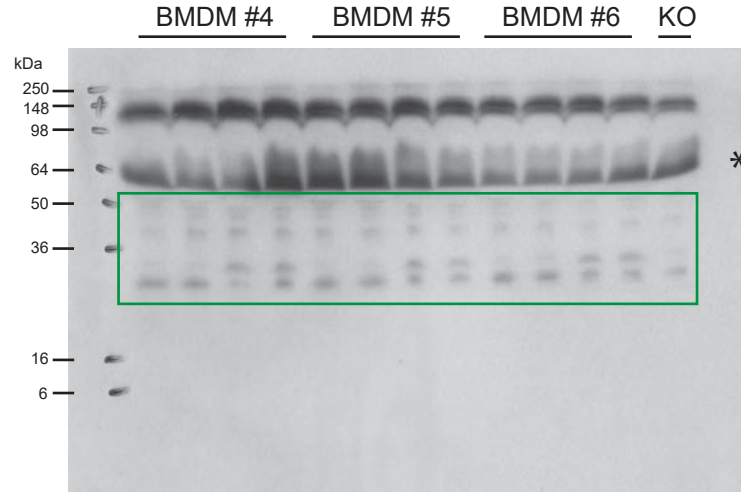


Fig. 3C; APPs; 12 % Tris Glycine

When re-probing for APPs serum components within the cell culture media were detected unspecifically (*). Moreover, in one of the two blots there was some residual TREM2 signal detectable (green box).