

Exosome promotes liver cancer metastasis

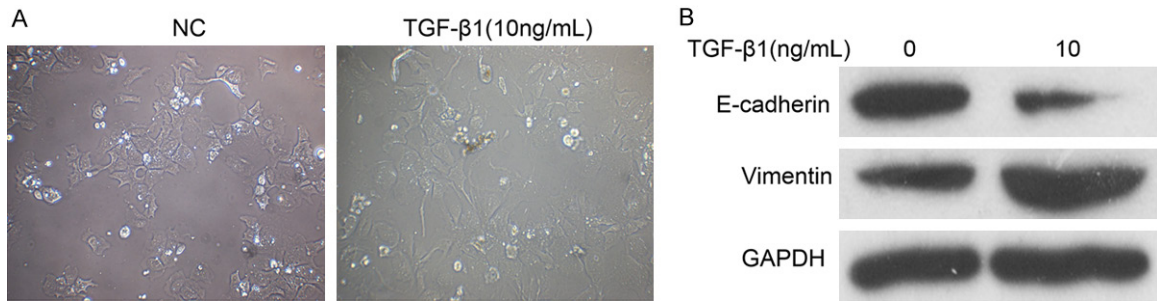


Figure S1. TGF- β treatment of Hep3B cells induces EMT. A. Changes in Hep3B cells morphology after TGF- β 1 stimulation. The cells appeared square shaped before treatment and progressively changed to distinct fusiform shape. B. EMT markers (vimentin and E-cadherin) were detected by western blot.