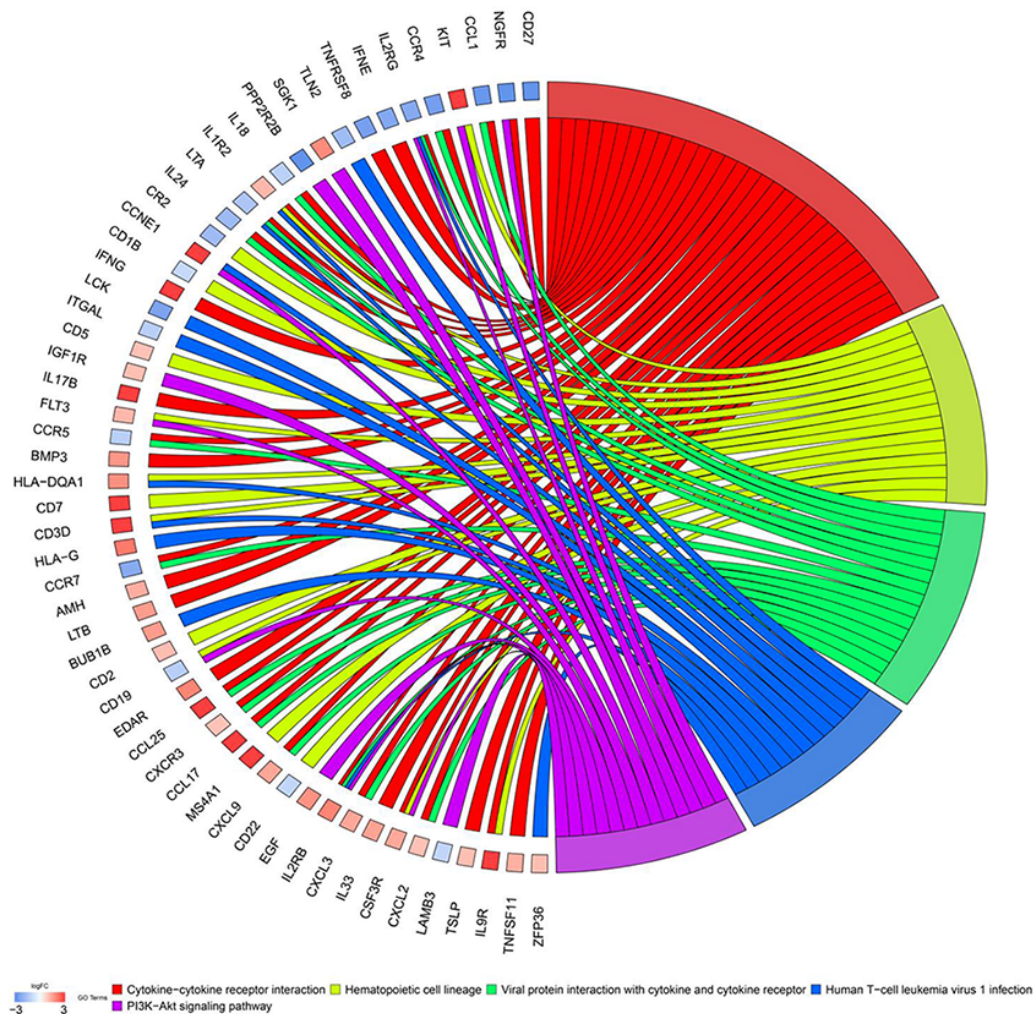
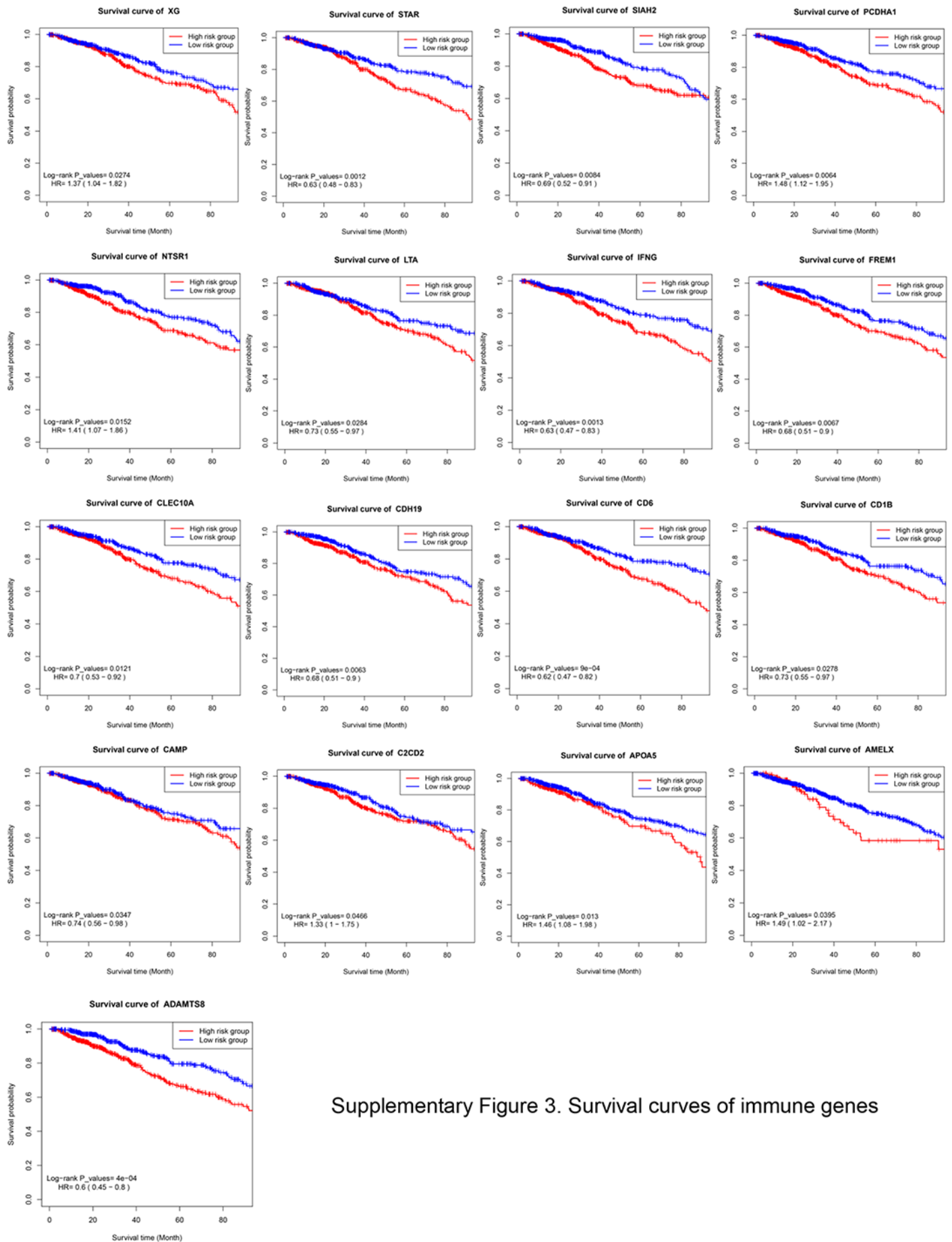


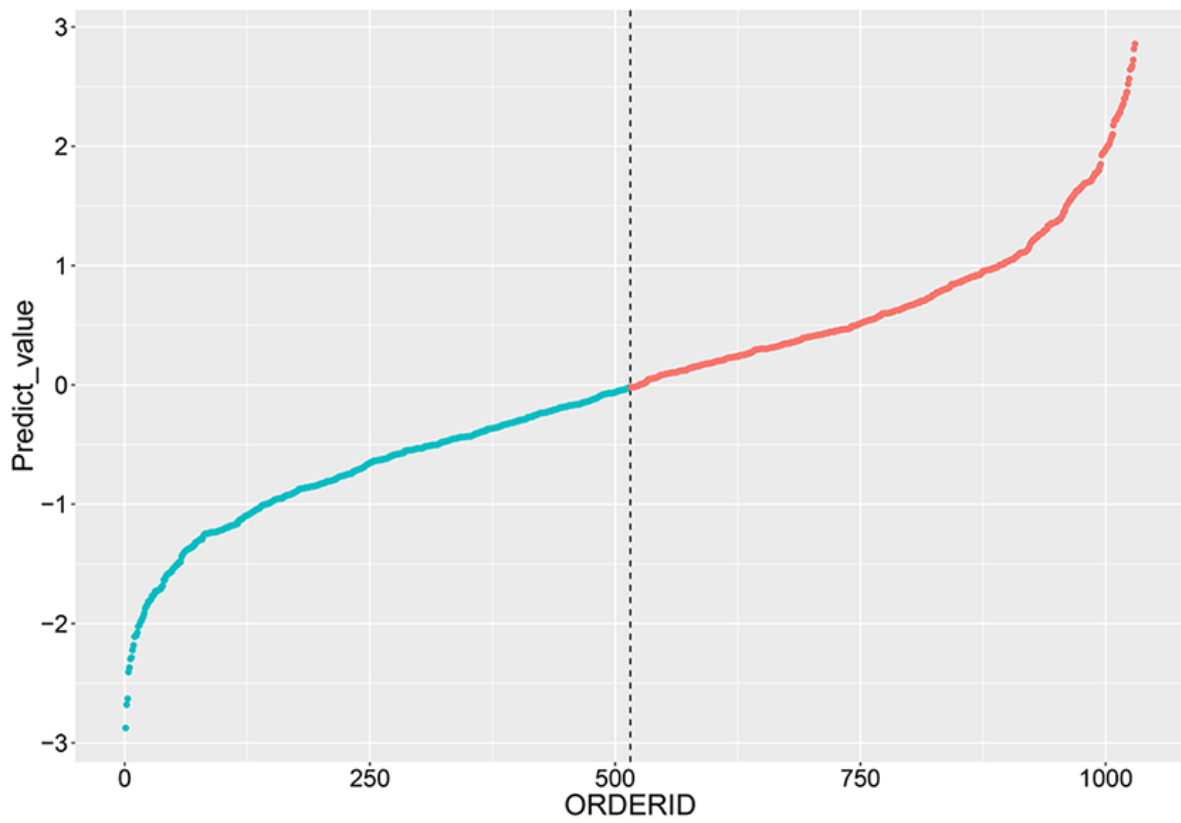
Supplementary Figure 1. Flow chart in current study



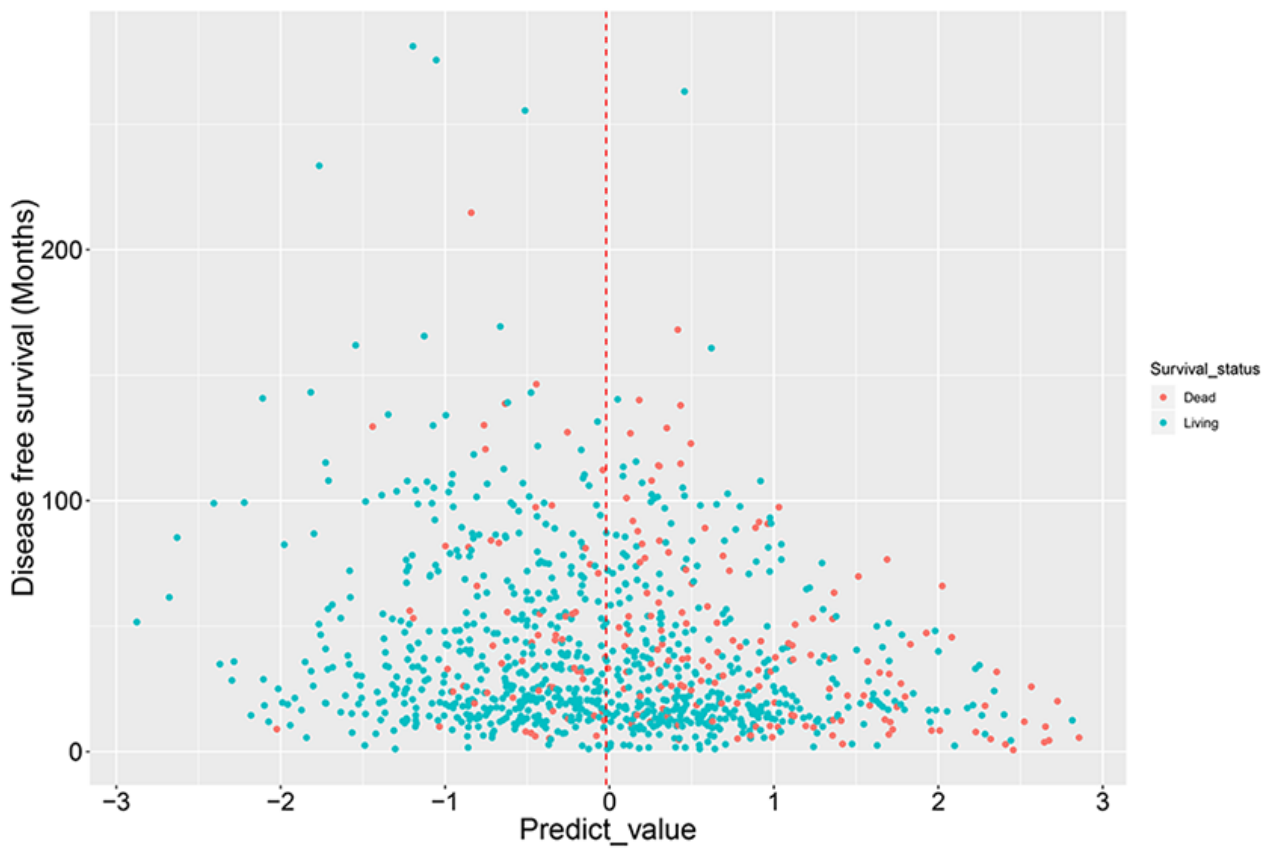
Supplementary Figure 2. KEGG function enrichment chord chart



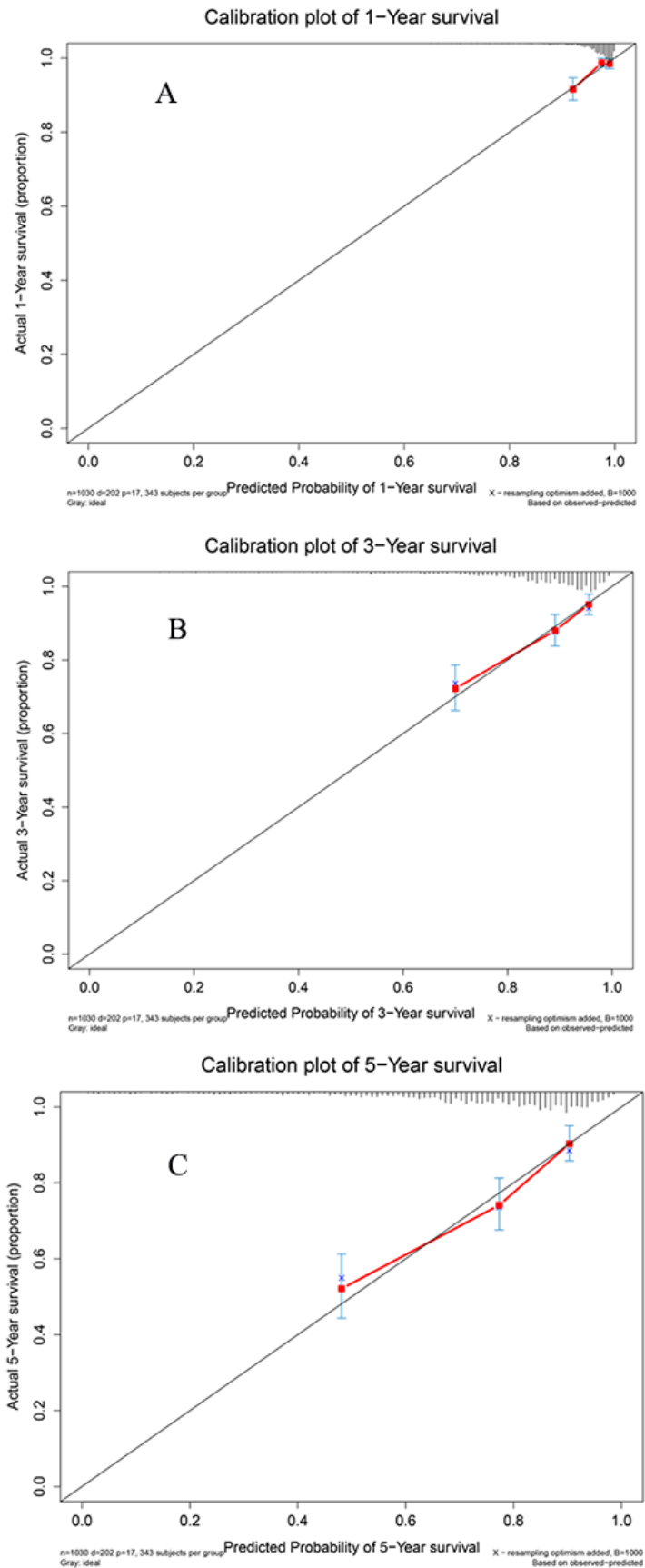
Supplementary Figure 3. Survival curves of immune genes



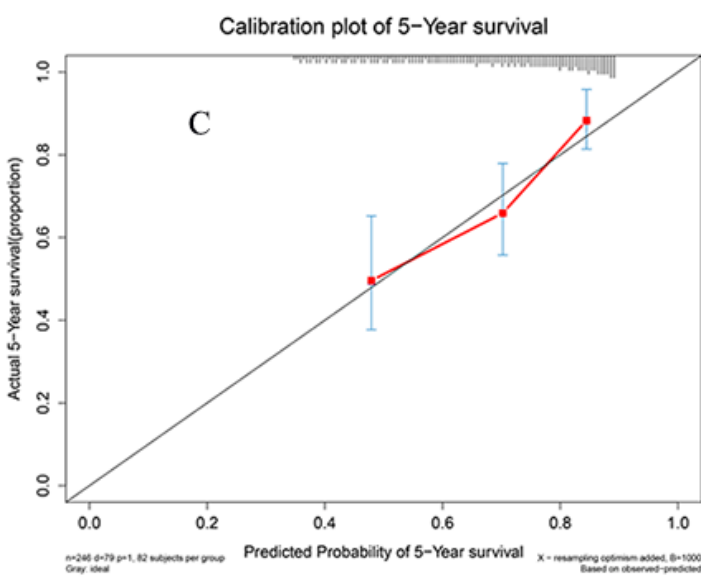
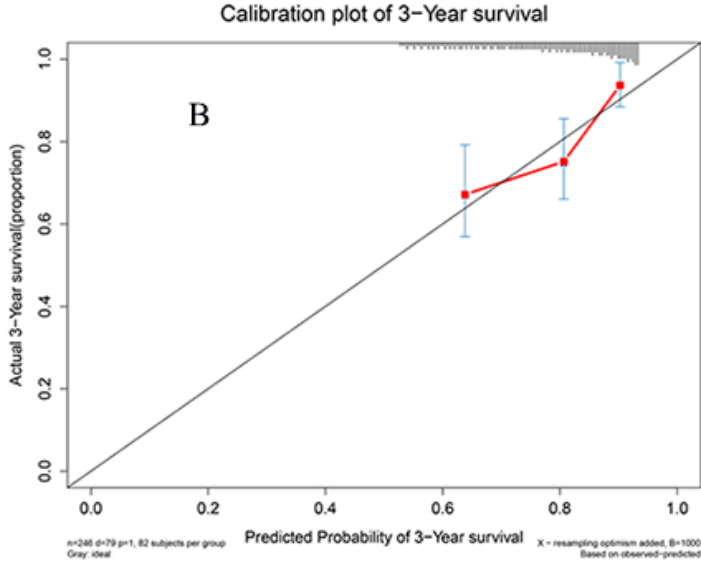
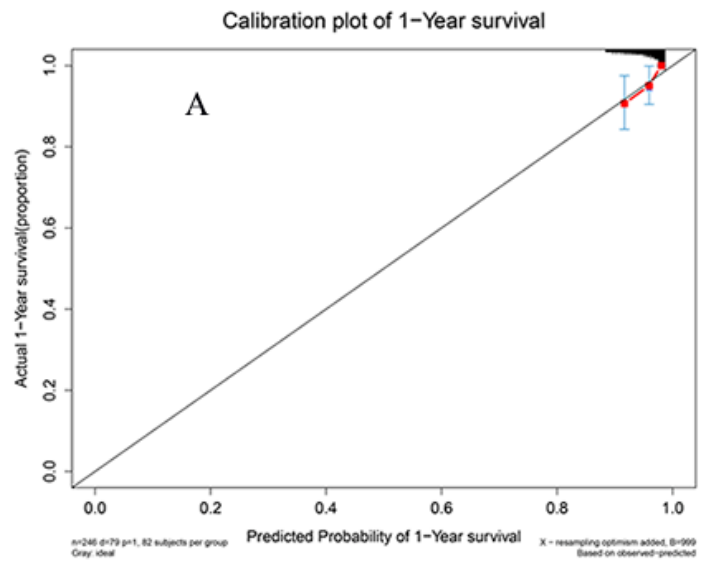
Supplementary Figure 4. Predictive value distribution chart



Supplementary Figure 5. Survival status scatter plot



Supplementary Figure 6. Calibration curves for model cohort: (A) Calibration curve for 1-year survival; (B) Calibration curve for 3-year survival; (C) Calibration curve for 5-year survival



Supplementary Figure 7. Calibration curves for validation cohort: (A) Calibration curve for 1-year survival; (B) Calibration curve for 3-year survival; (C) Calibration curve for 5-year survival

Step 1 : Select dataset

Using testing dataset (.xlsx) or upload a new dataset (.xlsx)?

Testing dataset (.xlsx)

Step 2 : Select subgroup

Subgroup

0

Patient gender

0

Tumor stage

0

Download testing dataset (.csv)

Kaplan-Meier survival curve

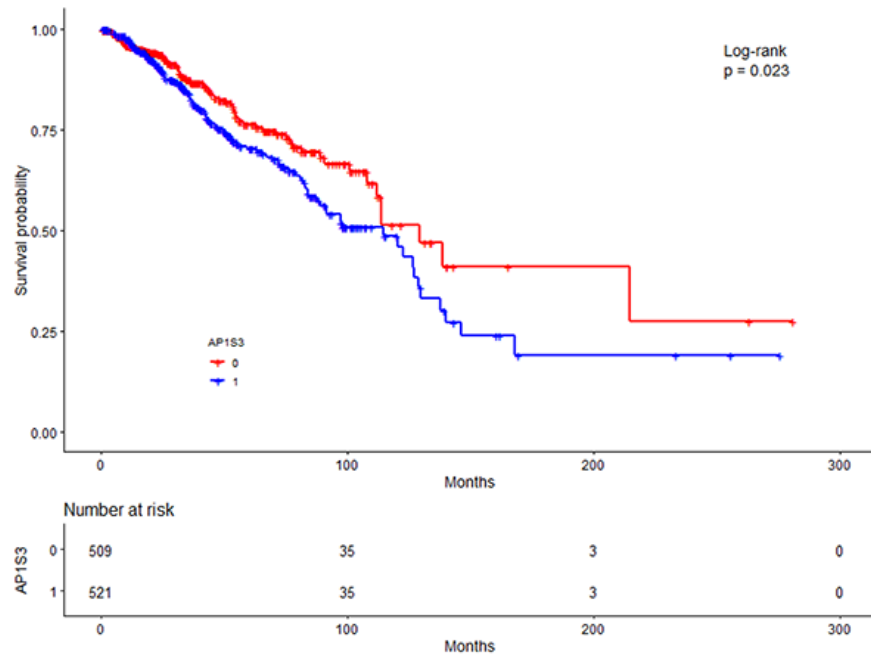
Survival status variable

DFS

Survival time variable

DFS_MONTH

Define time unit

 Years[Original data display](#)[Survival curve analysis](#)[Univariate Cox survival analysis table](#)[Guidelines and Statements](#)**Kaplan-Meier survival curve****Step 1 : Select dataset**

Using testing dataset (.xlsx) or upload a new dataset (.xlsx)?

Testing dataset (.xlsx)

Step 2 : Select subgroup

Subgroup

0

Patient gender

0

Tumor stage

0

Download testing dataset (.csv)

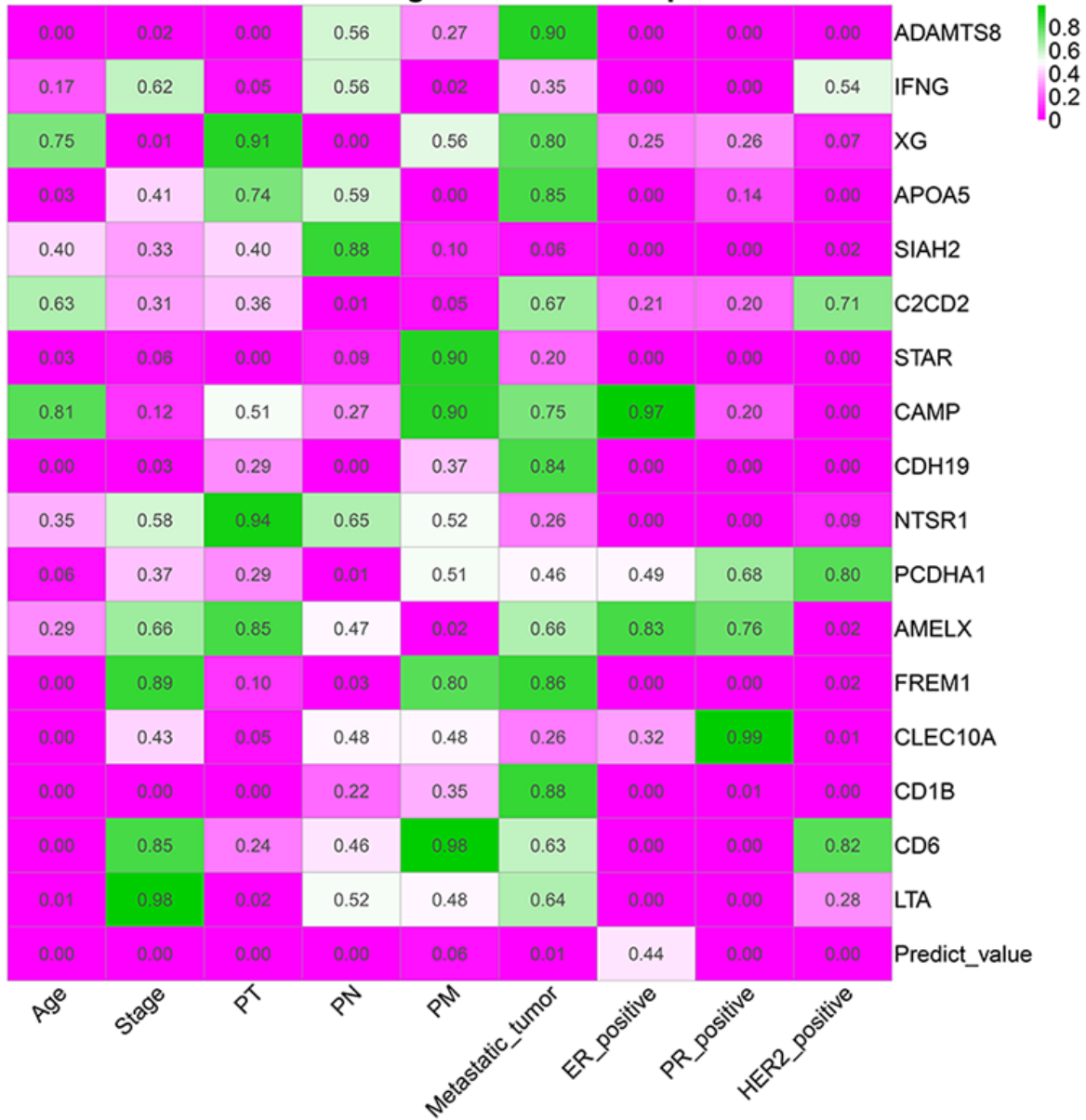
[Original data display](#)[Survival curve analysis](#)[Univariate Cox survival analysis table](#)[Guidelines and Statements](#)**Univariate survival analysis table**

Show 10 entries

Variable	Category	Number	Hazard Ratio (95% confidence interval)
PT	1	754	1.685 (1.202-2.362)
	0	276	
Age	1	538	1.573 (1.189-2.08)
	0	492	
BUB1	1	515	1.34 (1.015-1.77)
	0	515	

Supplementary Figure 8. Home page of Gene Survival Analysis Screen System: (A). Survival curves display page depicted and compared the survival curve between two defined subgroups; (B). Univariate survival analysis display page displayed results of univariate survival analysis for selected variables. Gene Survival Analysis Screen System allows users define different subgroups by themselves. Users are free to download, upload, and select the dataset for gene survival analysis.

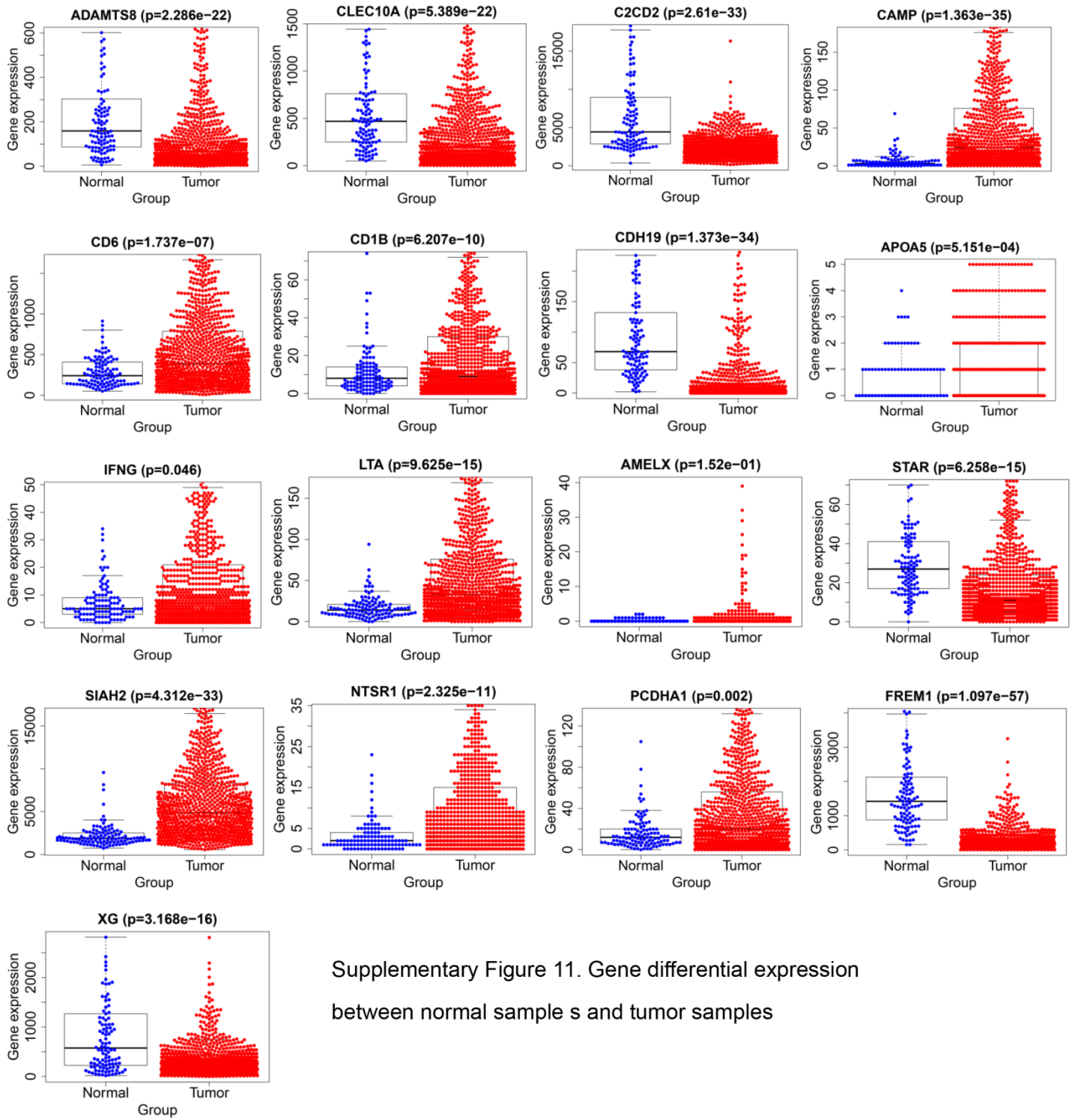
Correlation significance heatmap



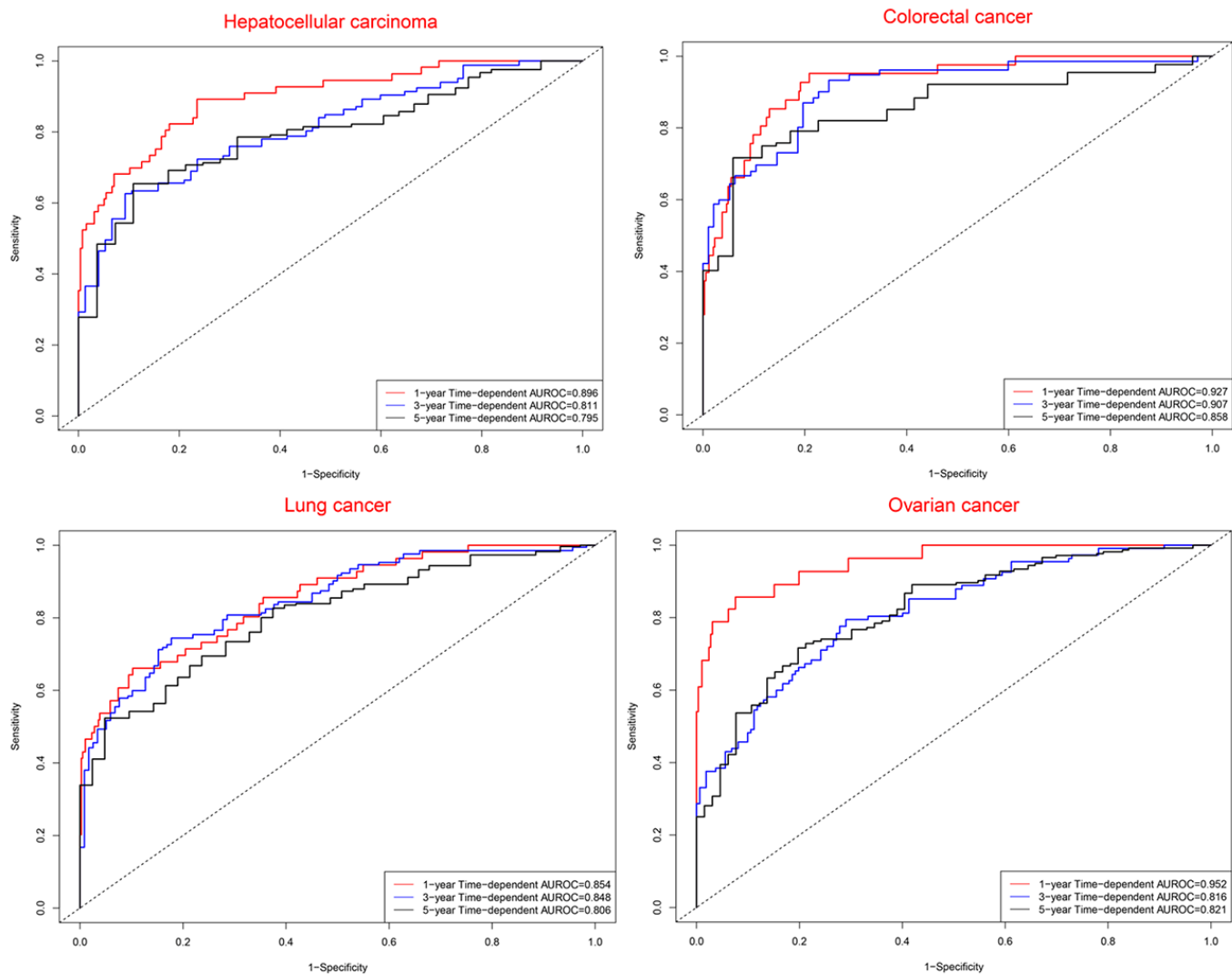
Supplementary Figure 9. Clinical variable correlation significance heatmap



Supplementary Figure 10. Immune gene correlation significance heatmap

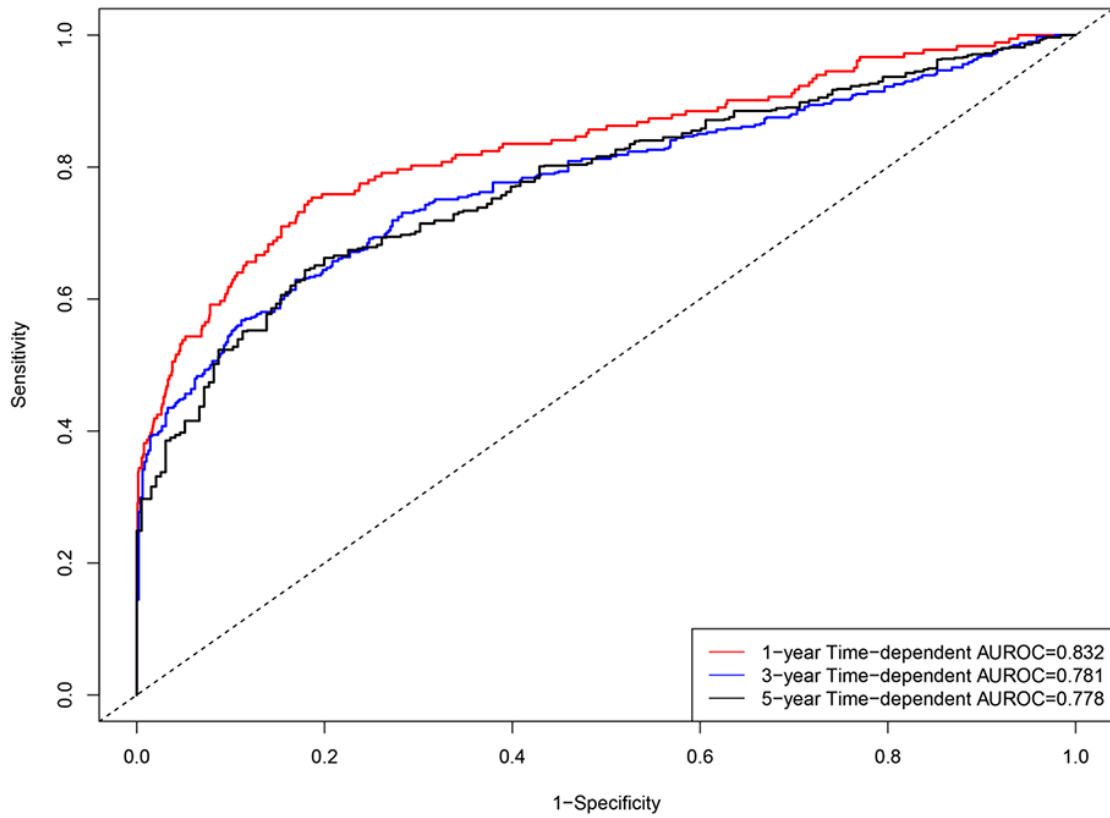


Supplementary Figure 11. Gene differential expression between normal samples and tumor samples

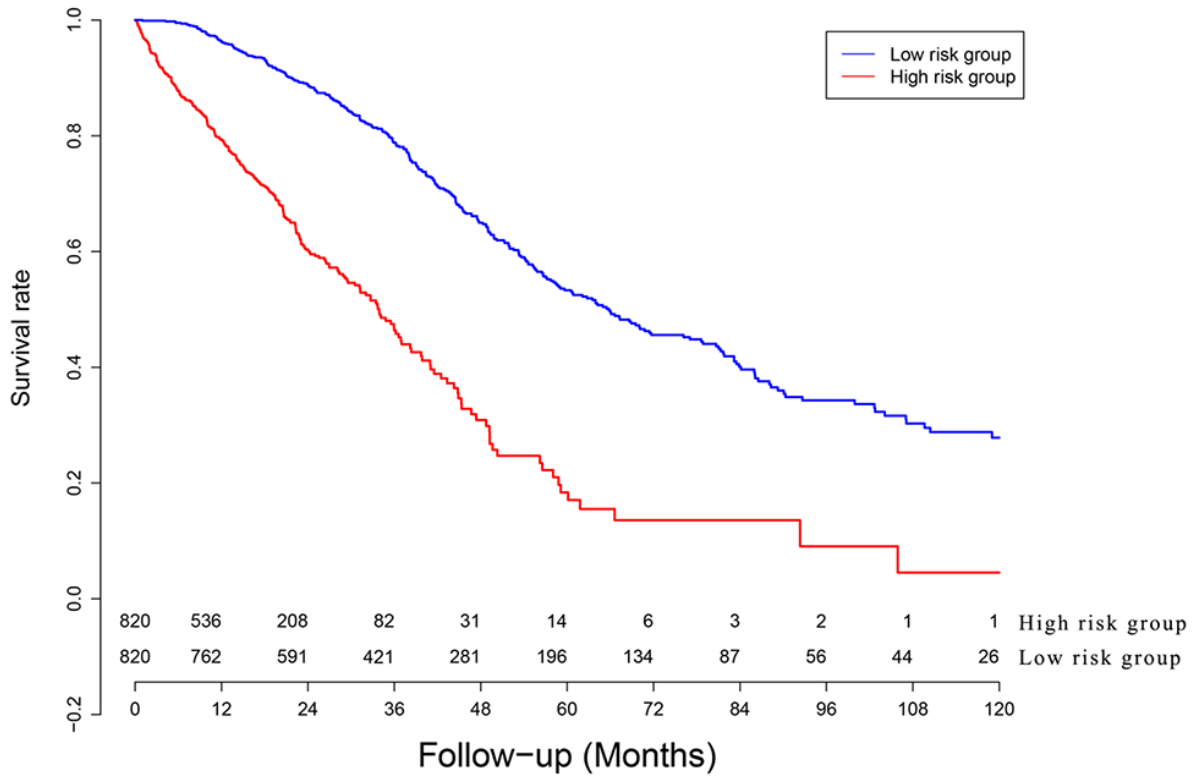


Supplementary Figure 12. Survival curves of four malignant solid tumors: (A). Hepatocellular carcinoma; (B). Colorectal cancer; (C). Lung cancer; (D). Ovarian cancer.

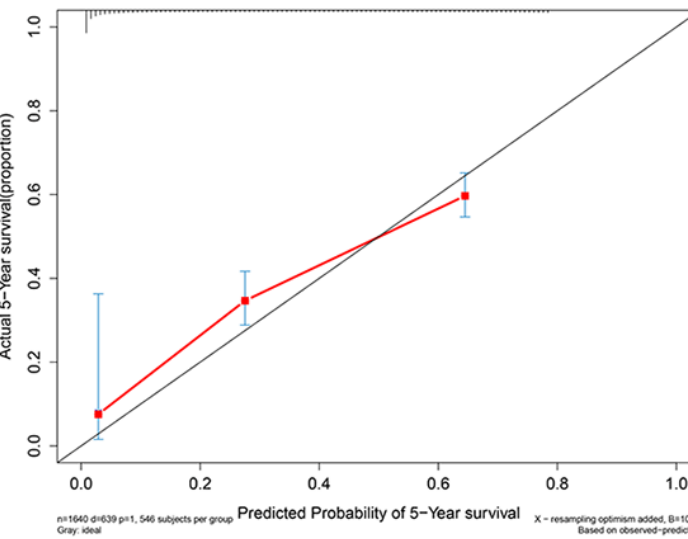
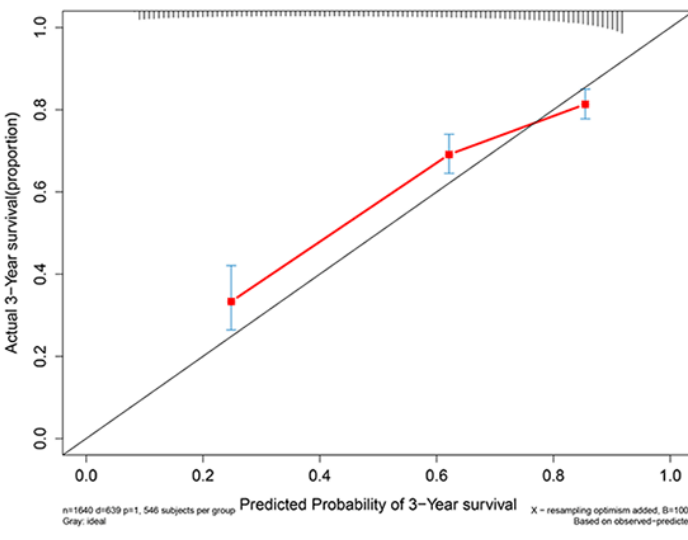
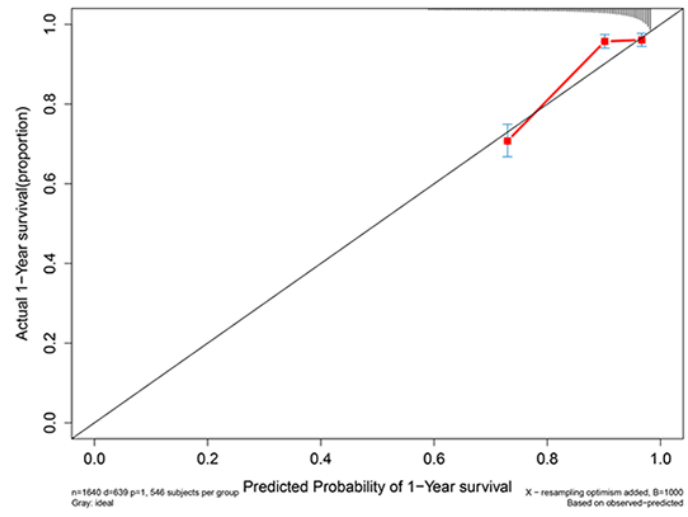
Four solid tumors



Survival curve chart



Supplementary Figure 13. Clinical performance in five malignant solid tumor datasets:
 (A). Time-dependent receiver operating characteristic curves;
 (B). Survival curves for high risk group and low risk group.



Supplementary Figure 14. Calibration curves in four malignant solid tumor datasets: (A). Calibration curve for 1-year survival; (B). Calibration curve for 3-year survival; (C). Calibration curve for 5-year survival