



Supplementary Materials

Alpha-Smooth Muscle Actin-Positive Perivascular Cells in Diabetic Retina and Choroid

Soo Jin Kim ¹, Sang A. Kim ¹, Yeong A. Choi ¹, Do Young Park ¹, and Junyeop Lee ^{2,*}

¹ Department of Ophthalmology, Yeungnam University College of Medicine, Daegu, Republic of Korea; freicas@naver.com (S.J.K.); zzanga5897@naver.com (S.A.K.); kei97437@gmail.com (Y.A.C.); doyoung83.park@gmail.com (D.Y.P.)

² Department of Ophthalmology, Asan Medical Center, University of Ulsan, College of Medicine, Seoul, Republic of Korea

* Correspondence: jleeamc@gmail.com (J.L.); Tel.: +82-2-3010-3680



Figure S1. Induction of transparent choroid by bleaching of choroidal melanocytes and RPE pigments in C57Bl/6 mouse. Left shows a previously-used method; RPE-choroidal layer was stripped from sclera. Right shows a bleaching method; choroid exposed to 3% hydrogen peroxide at 4 °C for 5 days. The bleaching method does not require any stripping but have some limitations that they may lose affinity or activity of certain types of surface markers and autofluorescence.

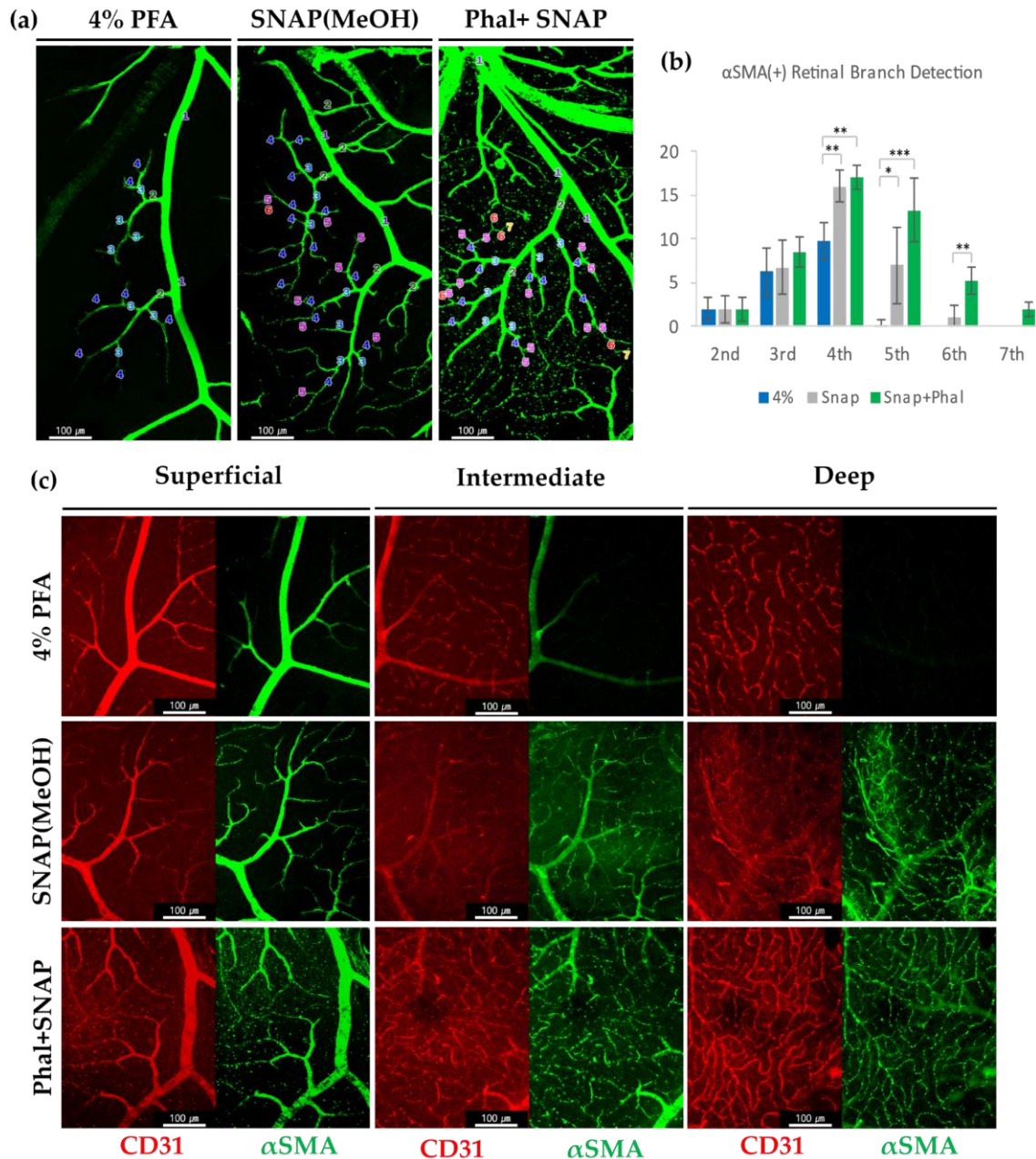


Figure S2. α SMA expression in capillaries of the retina and choroid. (a) α SMA-positive branch order in the retina were compared among PFA fixation, snap fixation, and snap fixation after intravitreal injection of phalloidin (Phal+SNAP) (b) Quantifications of α SMA-positive retinal branch detection. To properly compare the order of the detected branch, the number of branches were computed as counts per two 2nd-order branches. Error bars indicate SD. (2-way Anova; N=10 per group, * $p < 0.05$, ** $p < 0.01$, *** $p < 0.001$) (c) α SMA detection in the three different capillary plexuses of the retina.