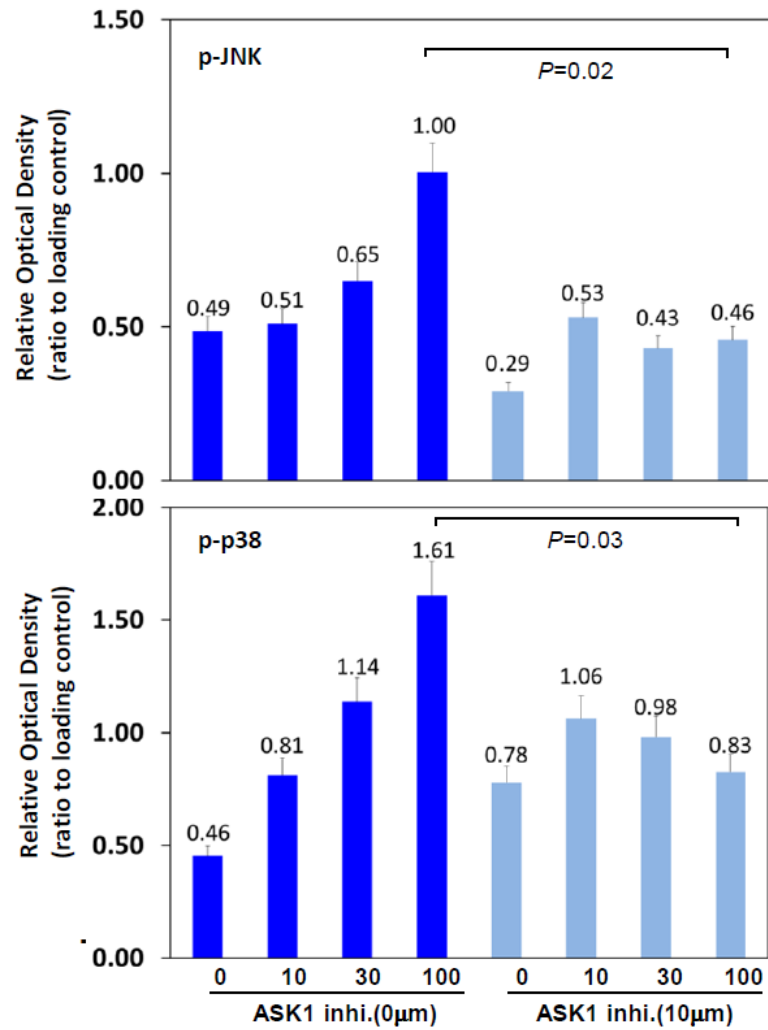
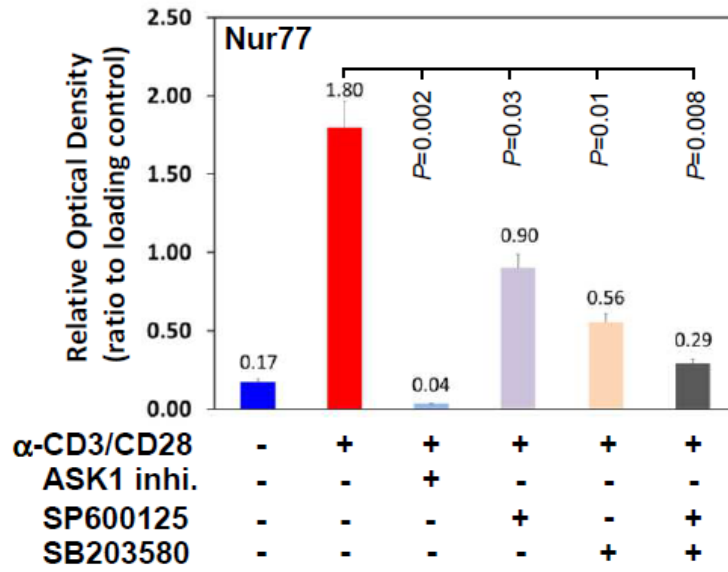


Supplementary Figure S1. Relative optical density (OD) from immunoblots of Figure 1b and 1c. The blots of ASK1 and cleaved caspase-3 (C.Casp3) were semi-quantitatively analyzed by Image J software and the sum optical density was obtained. Values are ratios to signals that were obtained for loading control ERK2. Data are means \pm SEM of 3 experiments.



Supplementary Figure S2. Relative optical density (OD) from immunoblots of Figure 2c. The blots of JNK and p38 phosphorylation were semi-quantitatively analyzed by Image J software and the sum optical density was shown as bar graph. Values are ratios to signals that were obtained for loading control JNK and p38. Data are means \pm SEM of 3 experiments.



Supplementary Figure S3. Relative optical density (OD) from immunoblots of Figure 3c. The blots of Nur77 were semi-quantitatively analyzed by Image J software and the sum optical density was shown as bar graph. Values are ratios to signals that were obtained for loading control ERK2. Data are means \pm SEM of 3 experiments.