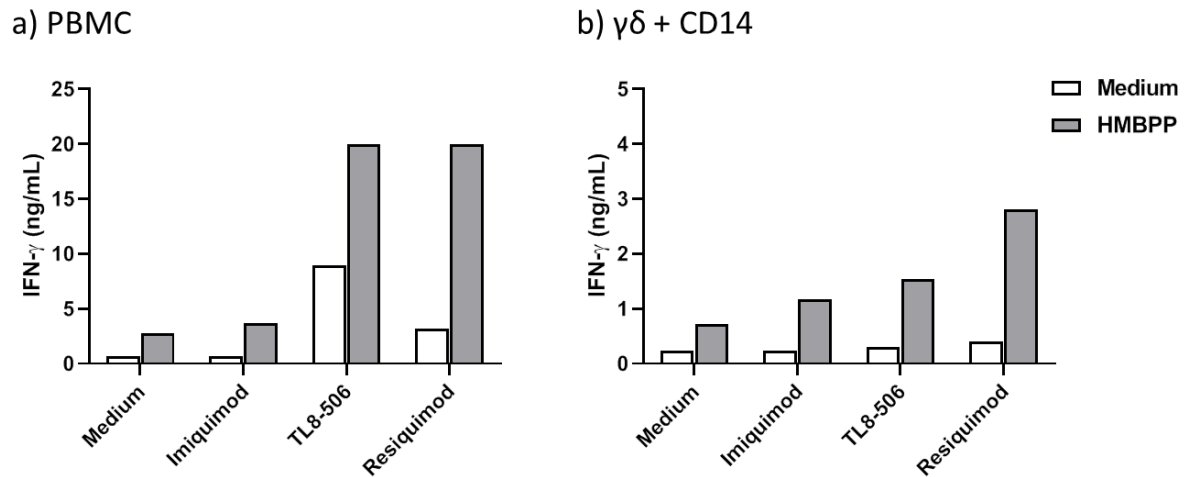
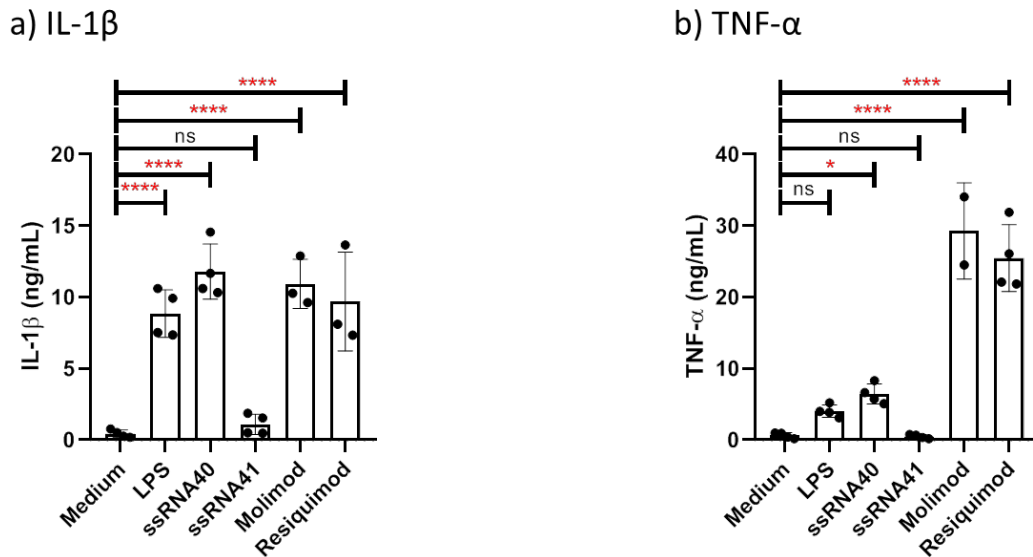


## Supplemental Figure S1



**Supplemental Figure S1:** Secretion of IFN $\gamma$  in cell culture supernatants of PBMC and  $\gamma\delta$  T-cell/monocyte co-cultures.  $1.5 \times 10^5$  PBMC (a), or  $2 \times 10^4$  purified  $\gamma\delta$  T cells plus  $5 \times 10^4$  purified monocytes (b) from a healthy donor were activated with TLR ligands Imiquimod ( $1 \mu\text{g}/\text{mL}$ ), TL8-506 ( $0.1 \mu\text{g}/\text{mL}$ ) or Resiquimod ( $1 \mu\text{g}/\text{mL}$ ) as indicated. HMBPP was added at 10nM to PBMC (a) and to  $\gamma\delta$  T cell/monocyte co-cultures (b) where indicated. After 24hr, cell culture supernatants were collected and stored at  $-20^\circ\text{C}$  until quantification of IFN- $\gamma$  by ELISA. Mean of duplicate determinations, results of one representative experiment.

## Supplemental Figure S2



**Supplemental Figure S2: Secretion of IL-1 $\beta$  and TNF- $\alpha$  in cell culture supernatants of purified monocytes.** Monocytes were purified from PBMC obtained from healthy blood donors by negative magnetic isolation.  $10^5$  monocytes/well were cultured in 96-well round-bottom microtiter plates in RPMI with 10% heat-inactivated low endotoxin FBS and in the presence or absence of 0.1  $\mu$ g/mL LPS, 1  $\mu$ g/mL ssRNA40/41, 0.5  $\mu$ g/mL Molimod, or 1  $\mu$ g/mL Resiquimod. After 24hr, supernatants were collected and stored at  $-20^{\circ}\text{C}$  until quantification of IL-1 $\beta$  (a) and TNF- $\alpha$  (b) by ELISA. Mean  $\pm$  SE of two to four individual experiments. n.s., not significant, \*  $p < 0.05$ , \*\*\*\*  $p < 0.0001$