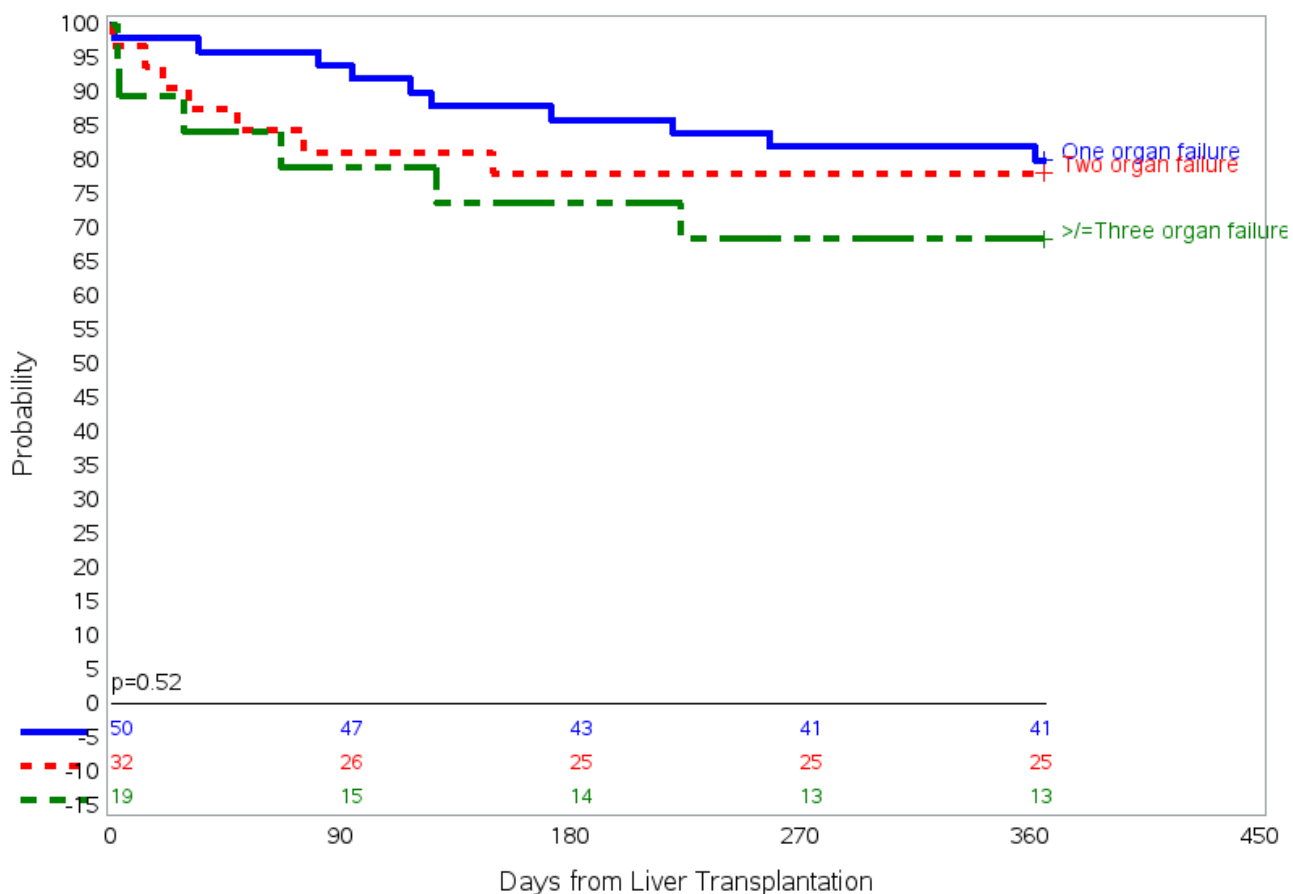


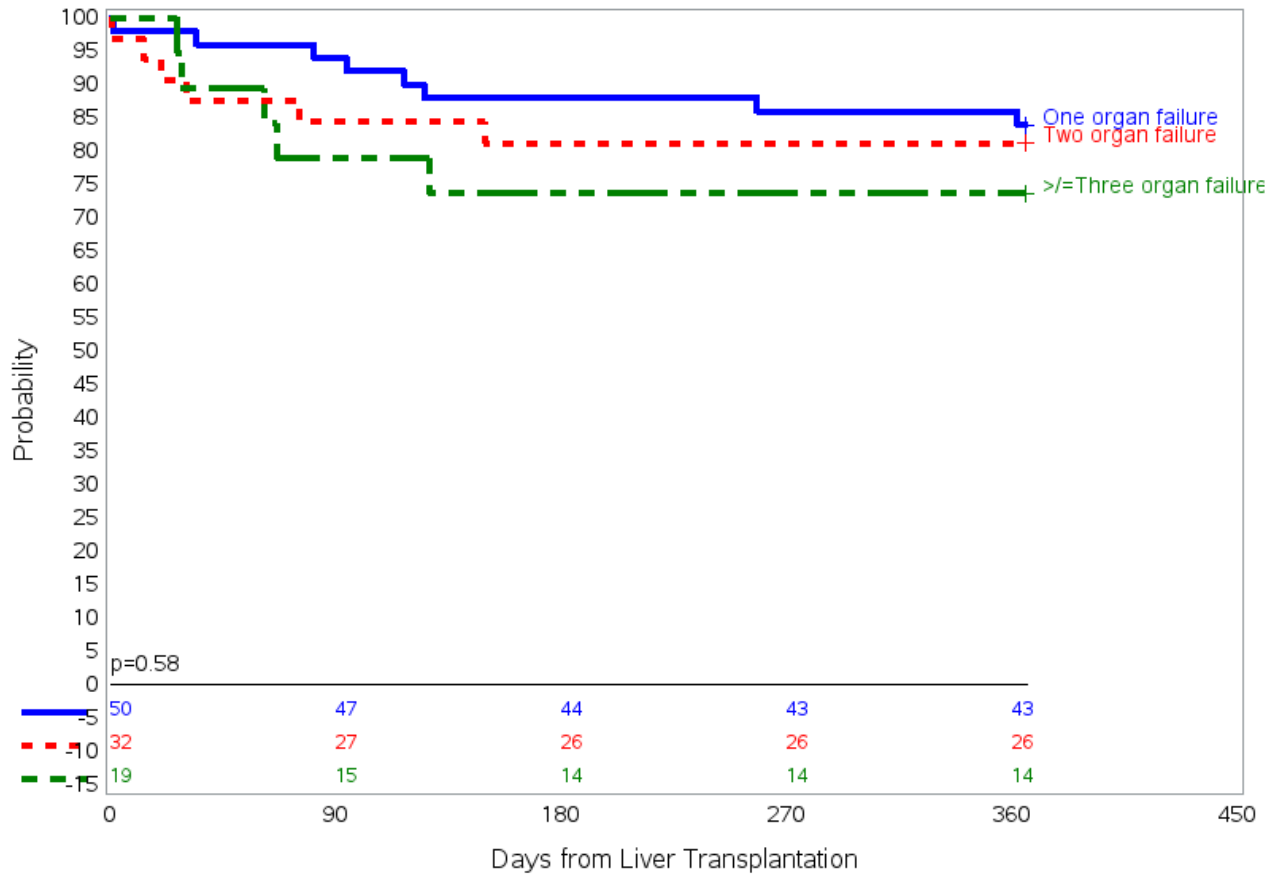
Graft Survival after Liver Transplantation by Number Of Organ Failures



	90 days	180 days	270 days	360 days
One Organ Failure	94%	87%	82%	82%
Two Organ Failure	81%	78%	78%	78%
>/= Three Organ Failure	79%	74%	69%	69%

Figure S1A

Patient Survival after Liver Transplantation by Number Of Organ Failures

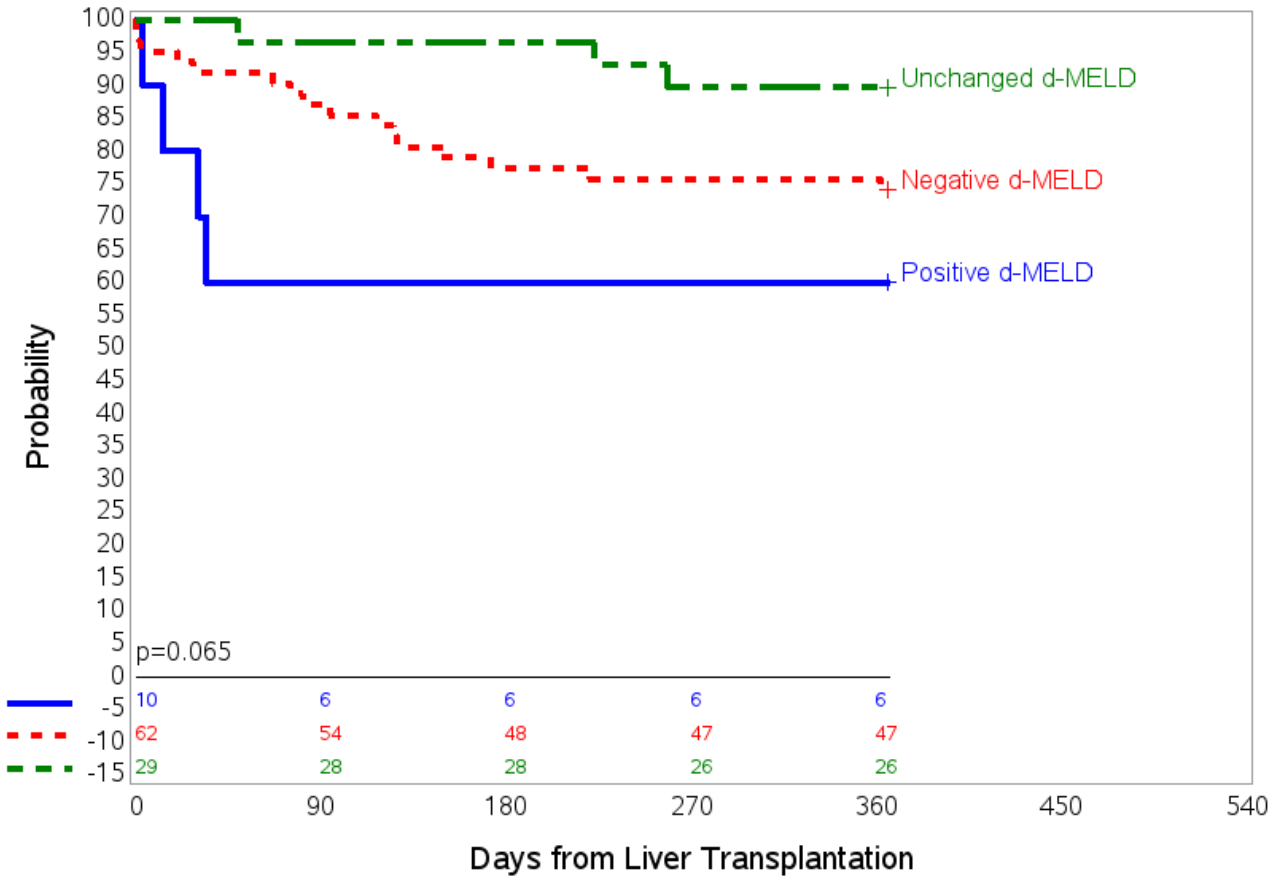


	90 days	180 days	270 days	360 days
One Organ Failure	94%	88%	87%	87%
Two Organ Failure	84%	81%	81%	81%
>= Three Organ Failure	79%	74%	74%	74%

Figure S1B

Figure S1 Cumulative graft survival (death/retransplant) and patient survival (death) by number of organ failures. (A) One-year graft survival by number of organ failures using Kaplan-Meier survival analysis. (B) One-year patient survival by number of organ failures using Kaplan-Meier survival analysis.

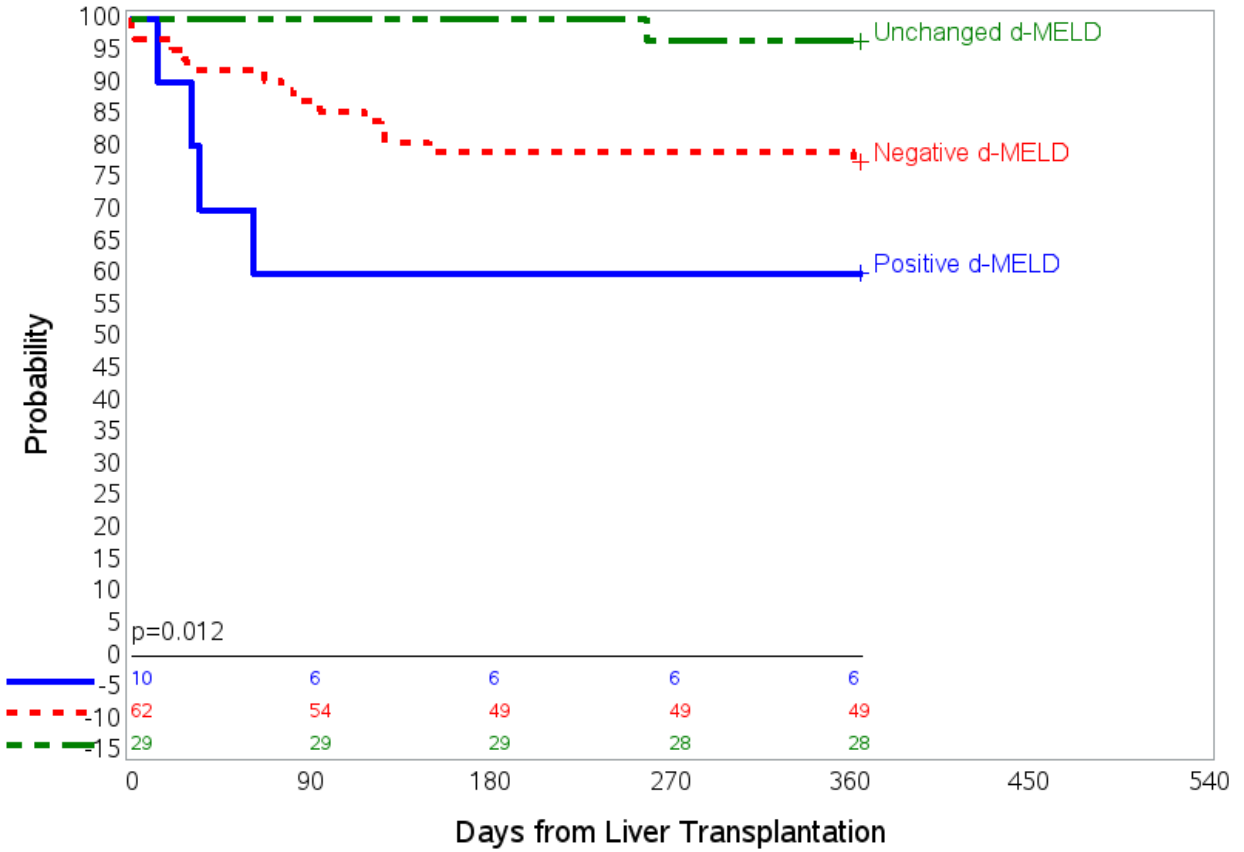
Graft Survival after Liver Transplantation by MELD change



	90 days	180 days	270 days	360 days
Negative d-MELD	60%	60%	60%	60%
Positive d-MELD	87%	79%	79%	79%
Unchanged d-MELD	97%	97%	90%	90%

Figure S2A

Patient Survival after Liver Transplantation by MELD Change



	90 days	180 days	270 days	360 days
Negative d-MELD	60%	60%	60%	60%
Positive d-MELD	87%	79%	79%	79%
Unchanged d-MELD	100%	100%	97%	97%

Figure S2B

Figure S2 Cumulative graft (death/retransplant) and patient survival (death) in all recipients by MELD change. (A) One-year graft survival by MELD change using Kaplan-Meier survival analysis. (B) One year patient survival by MELD using Kaplan-Meier survival analysis.

Table S1. Early (< 90 days) surgical complications/interventions.

	All patients (N= 690), n(%)	No ACLF (N=101), n(%)	ACLF (N=589), n(%)	P-value
Intra-abdominal bleeding	41(5.9)	33(5.6)	8(7.9)	0.36
HAT/HAS	4(0.6)	3(0.5)	1(1)	0.47
Bile duct leak/revision	33(4.8)	30(5.1)	3(3)	0.46
Primary nonfunction	1(0.1)	0(0)	1(1)	0.15
Re-LT (<90 days)	5(0.7)	4(0.7)	1(1.0)	0.55
Portal vein thrombosis	1(0.1)	1(0.2)	0(0)	1.00
Infectious complications	12(1.7)	7(1.2)	5(5.0)	0.02
Bowel perforation	9(1.3)	6(1)	3(3)	0.13
Bowel obstruction	3(0.4)	1(0.2)	2(2)	0.06
Abdominal compartment syndrome	1(0.1)	1(0.2)	0(0)	1.00
Surgical re- exploration within 90 days	113(16.4)	86(14.6)	27(26.7)	0.002

Abbreviations:

ACLF: acute-on-chronic liver failure; HAT: hepatic artery thrombosis; HAS: hepatic artery stenosis; LT: liver transplant

Table S2. Etiology of graft loss at 1 year in the ACLF groups and the non-ACLF groups

Etiology of graft loss	No ACLF N=589	ACLF N=101
Graft failure	3 (0.5)	0 (0)
CHF	0 (0)	3 (2.97)
AMI	11 (1.87)	4 (3.96)
Cardiac arrest	0 (0)	1 (0.99)
Sepsis	16 (2.72)	6 (5.94)
Malignancy	4 (0.68)	1 (0.99)
Unknown	5 (0.85)	2 (1.98)
Chronic Rejection	1 (0.17)	0 (0)
GI bleeding	1 (0.17)	1 (0.99)
PE	1 (0.17)	0 (0)
Recurrent HCV	1 (0.17)	0 (0)
Respiratory failure	5 (0.85)	1 (0.99)
CVA	1 (0.17)	0 (0)
Suicide	1 (0.17)	0 (0)
Retransplant	32 (5.43)	7 (6.93)

Abbreviations:

ACLF: acute-on-chronic liver failure; AMI: acute myocardial infarction; CHF: congestive heart failure; CVA: cerebrovascular accident; GI: gastrointestinal; HCV: hepatitis C virus