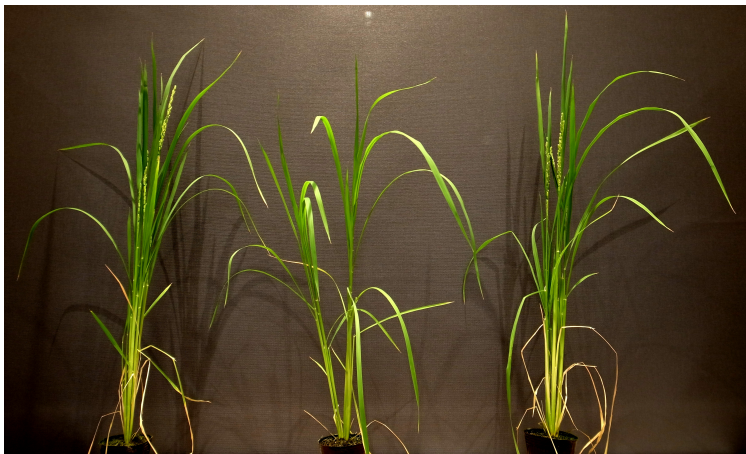
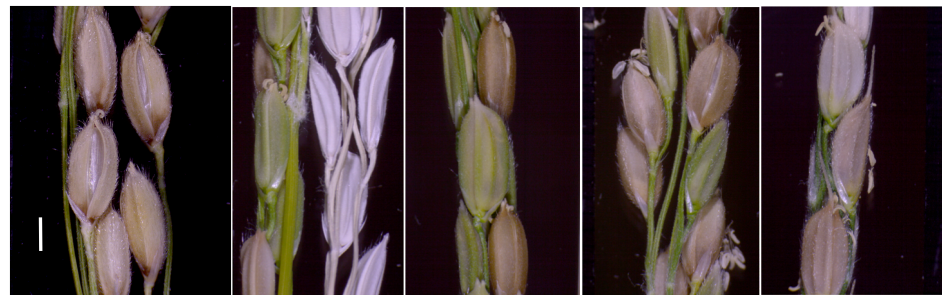


A



WT (Nipponbare) *RNAi-OsIBM2* #2 (T1) *RNAi-GFP*

B



WT
(Nipponbare)

#1

#12

#2

#16

RNAi-OsIBM2 (T1)

C



WT *osibm2_g2* #24 (T4)

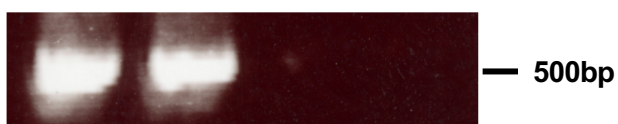
D

Endosperm + Embryo

Nipponbare

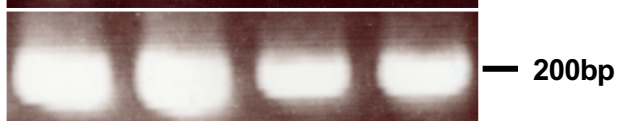
osibm2_g2 #24

Os02g0214500
(*THERMOSENSITIVE MALE STERILITY 5*)



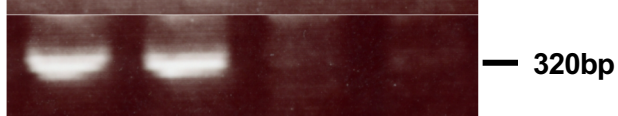
— 500bp

Os02g0274000
(*RESTORATION OF FERTILITY 2*)



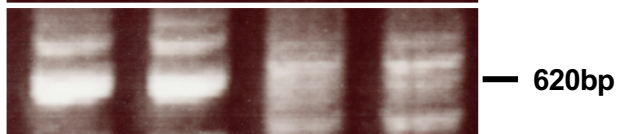
— 200bp

Os03g0407400
(*LONG KERNEL 3*)



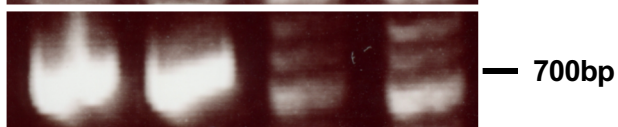
— 320bp

Os05g0405000
(*FLOURY ENDOSPERM 4*)



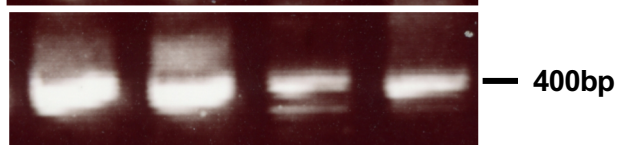
— 620bp

Os06g0133000
(*WAXY*)



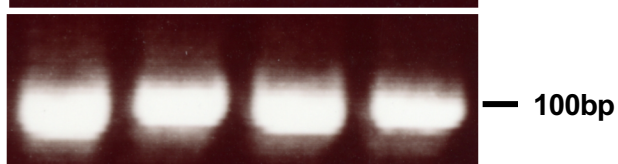
— 700bp

Os07g0182000
(*RISBZ1/Grain filling*)



— 400bp

UBQ



— 100bp