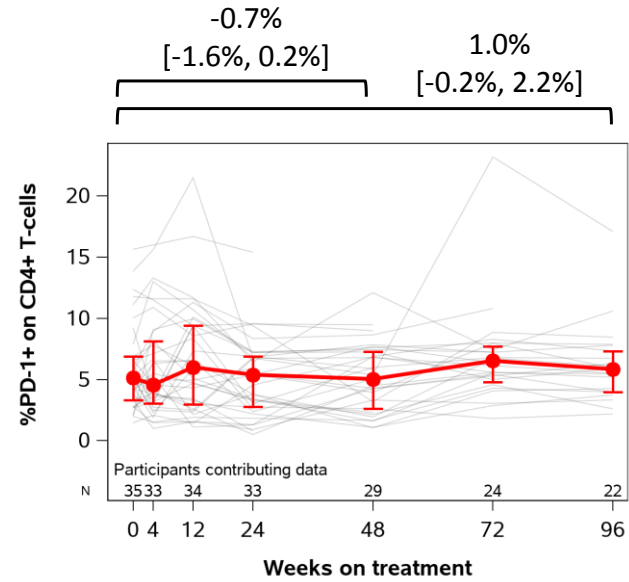
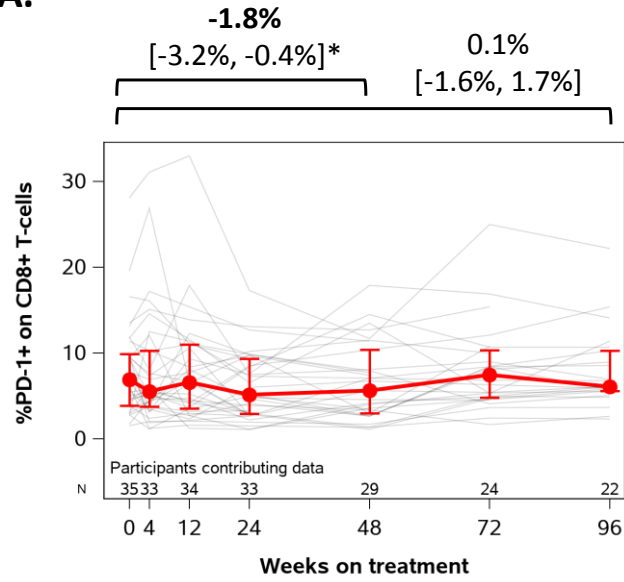
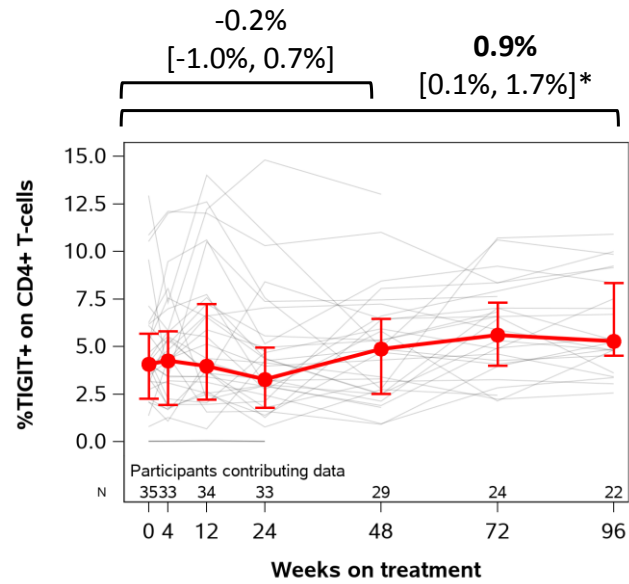
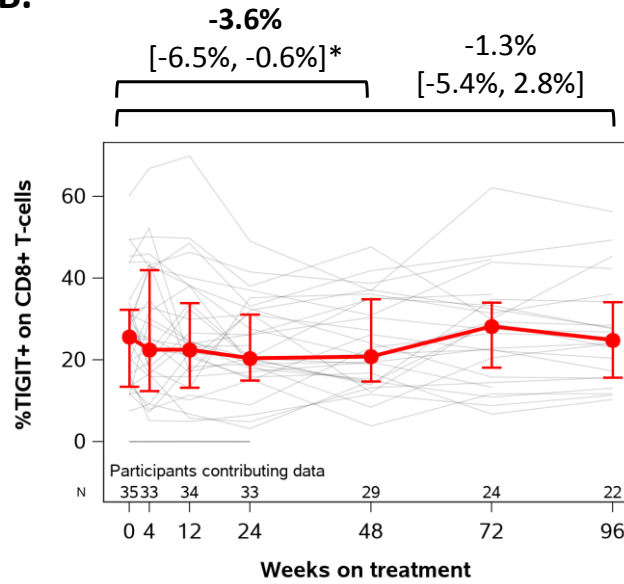


Supplemental Figure 1. No significant changes in HIV DNA levels in CD4+ cells in HIV controllers after initiation of antiretroviral therapy. Median and interquartile ranges are shown in red. Values for each individual in gray.

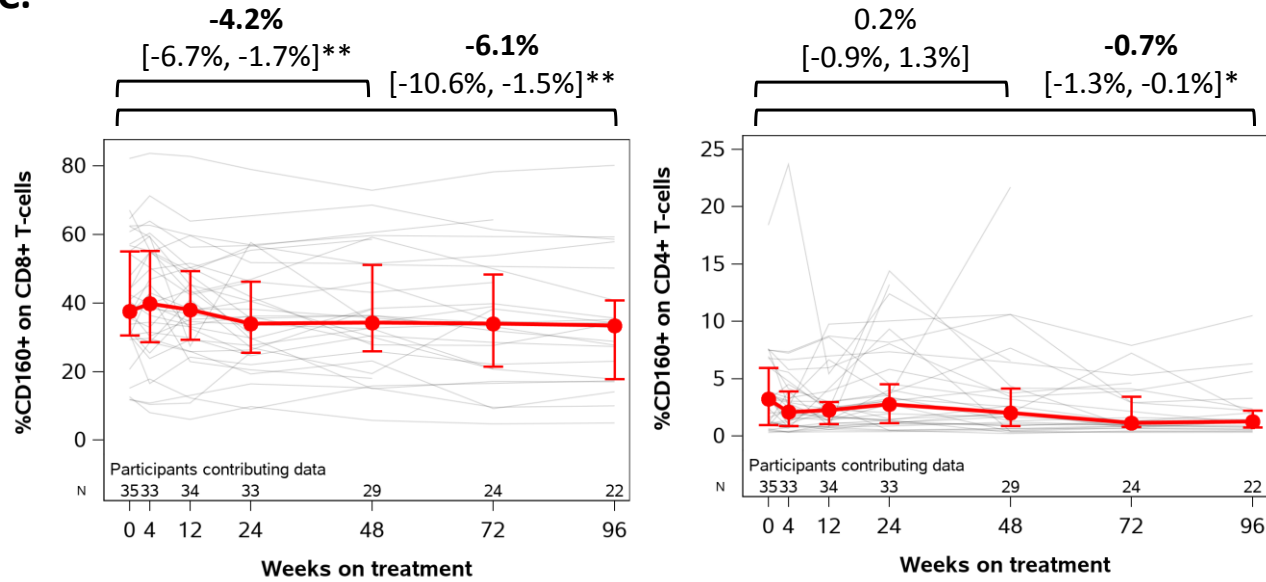
A.



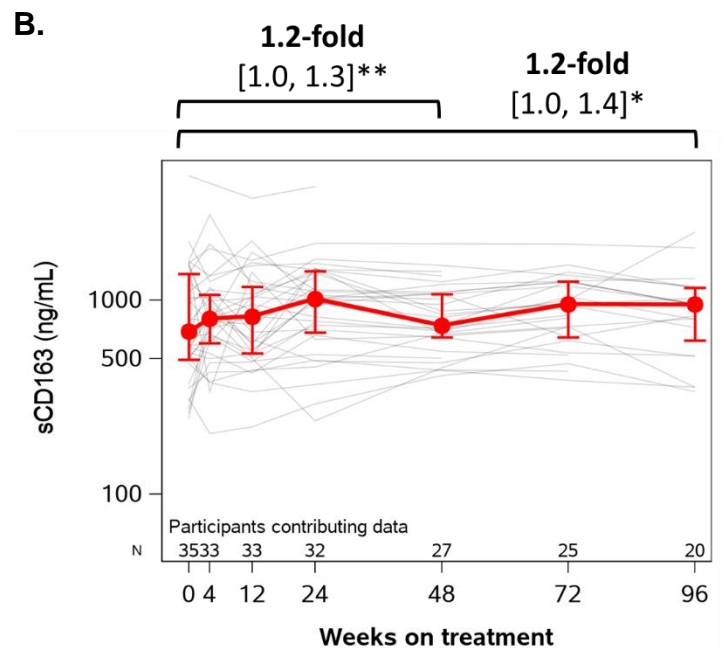
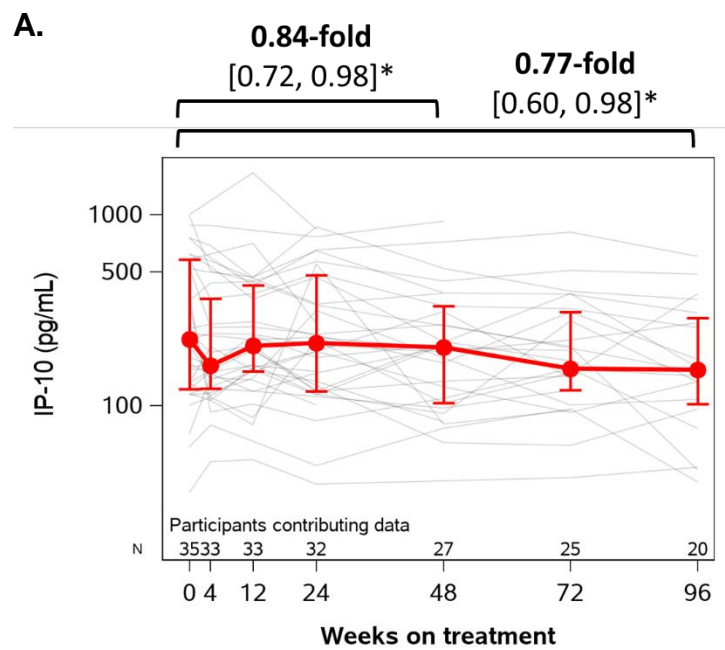
B.



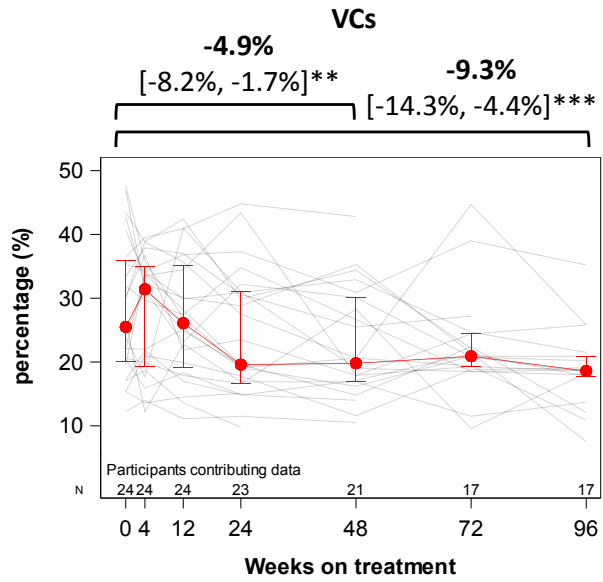
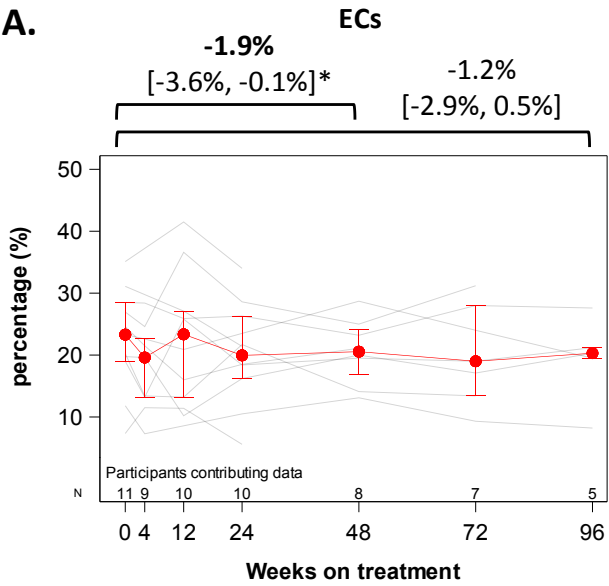
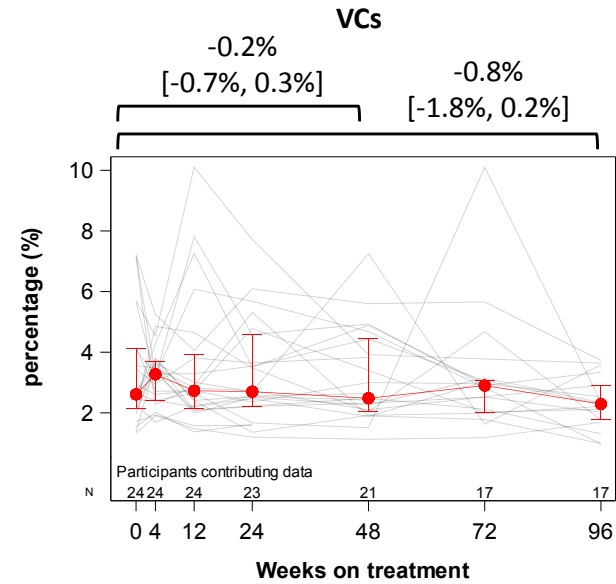
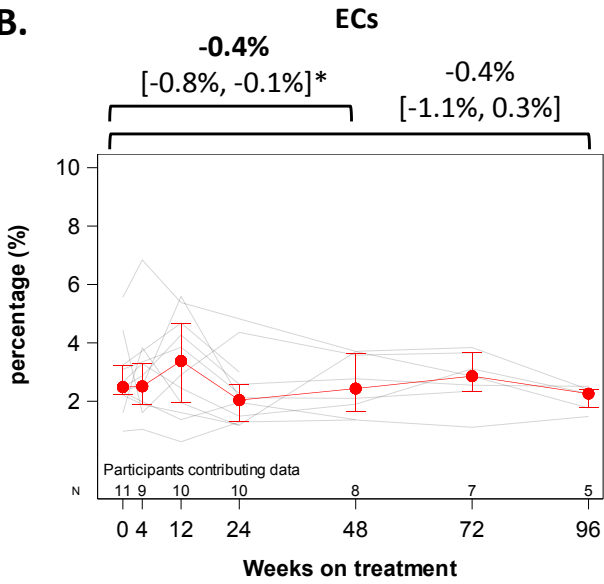
C.



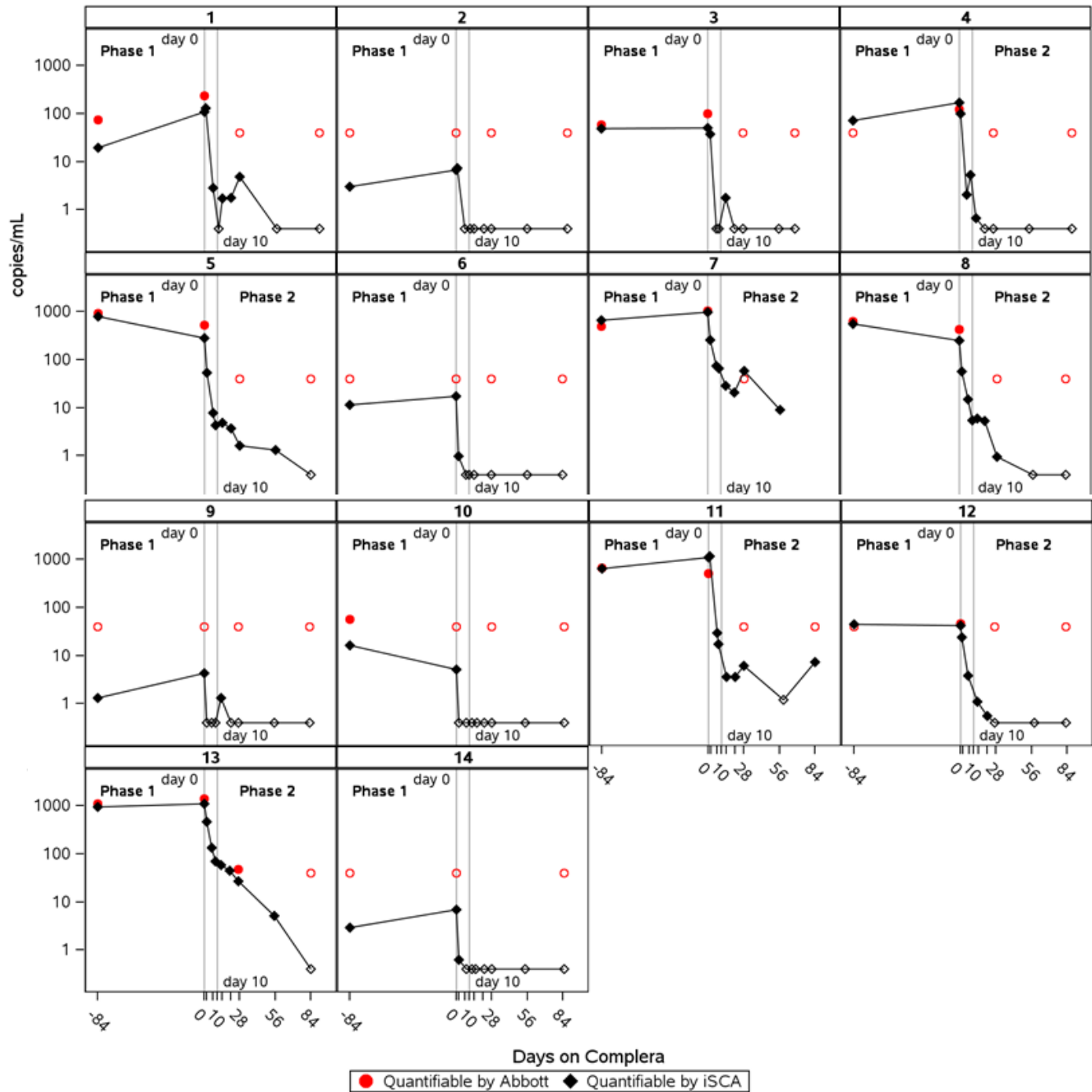
Supplemental Figure 2. Changes in T cell markers of immune exhaustion with antiretroviral therapy as measured by the percentage of CD8 and CD4 cells expressing (A) PD1, (B) TIGIT, and (C) CD160. Mean absolute change in percent T cells with 95% confidence values are shown above each graph. Within each graph, values for each individual are graphed in gray; mean and interquartile ranges are shown in red. *, P<0.05; **, P<0.01.



Supplemental Figure 3. Fold-changes in plasma (A) IP-10 and (B) sCD163 with antiretroviral therapy. Fold-change for each soluble inflammatory marker with 95% confidence values are shown above each graph. Within each graph, values for each individual are graphed in gray; mean and interquartile ranges are shown in red. *, P<0.05; **, P<0.01.

A.**B.**

Supplemental Figure 4. Decline in T cell activation with antiretroviral therapy as measured by the percentage of (A) CD8+ cells and (B) CD4+ cells co-expressing CD38 and HLA-DR in HIV elite controllers (ECs) and viremic controllers (VCs). Mean absolute change in percent activated T cells with 95% confidence values are shown above each graph. Within each graph, values for each individual are graphed in gray; mean and interquartile ranges are shown in red. *, $P < 0.05$; **, $P < 0.01$; ***, $P < 0.001$.



Supplemental Figure 5. Viral decay dynamics for HIV controllers. Red circles represent viral loads measured by the Abbott assay and black diamonds by the integrase single-copy assay. Closed symbols represent values above the limit of quantification and open symbols are values below the limit of quantification.