

Supplementary

# Polyphenols from *Salix tetrasperma* impair virulence and inhibit quorum sensing of *Pseudomonas aeruginosa*

Islam Mostafa <sup>1</sup>, Hisham A. Abbas <sup>2</sup>, Mohamed L. Ashour <sup>3</sup>, Aziz Yasri <sup>4</sup>, Assem M. El-Shazly <sup>1</sup>, Michael Wink <sup>5,\*</sup> and Mansour Sobeh <sup>4,5,\*</sup>

<sup>1</sup> Department of Pharmacognosy, Faculty of Pharmacy, Zagazig University, Zagazig, 44519, Egypt

<sup>2</sup> Department of Microbiology and Immunology, Faculty of Pharmacy, Zagazig University, Zagazig, 44519, Egypt

<sup>3</sup> Department of Pharmacognosy, Faculty of Pharmacy, Ain Shams University, Cairo, 11566, Egypt

<sup>4</sup> AgroBioSciences Research Division, Mohammed VI Polytechnic University, Lot 660–Hay MoulayRachid, Ben-Guerir, 43150, Morocco

<sup>5</sup> Institute of Pharmacy and Molecular Biotechnology, Heidelberg University, Heidelberg, 69120, Germany

\* Correspondence: [wink@uni-heidelberg.de](mailto:wink@uni-heidelberg.de), [mansour.sobeh@um6p.ma](mailto:mansour.sobeh@um6p.ma)

LC-MS/MS spectra of some selected compounds from the bark extract.

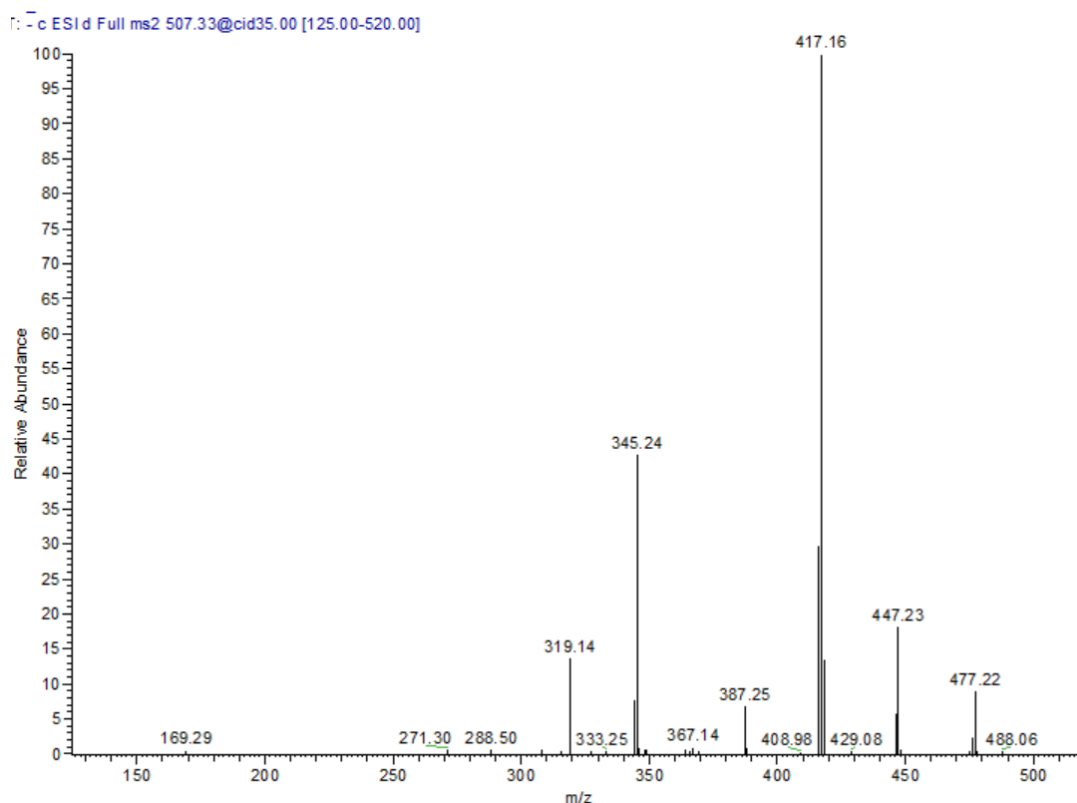
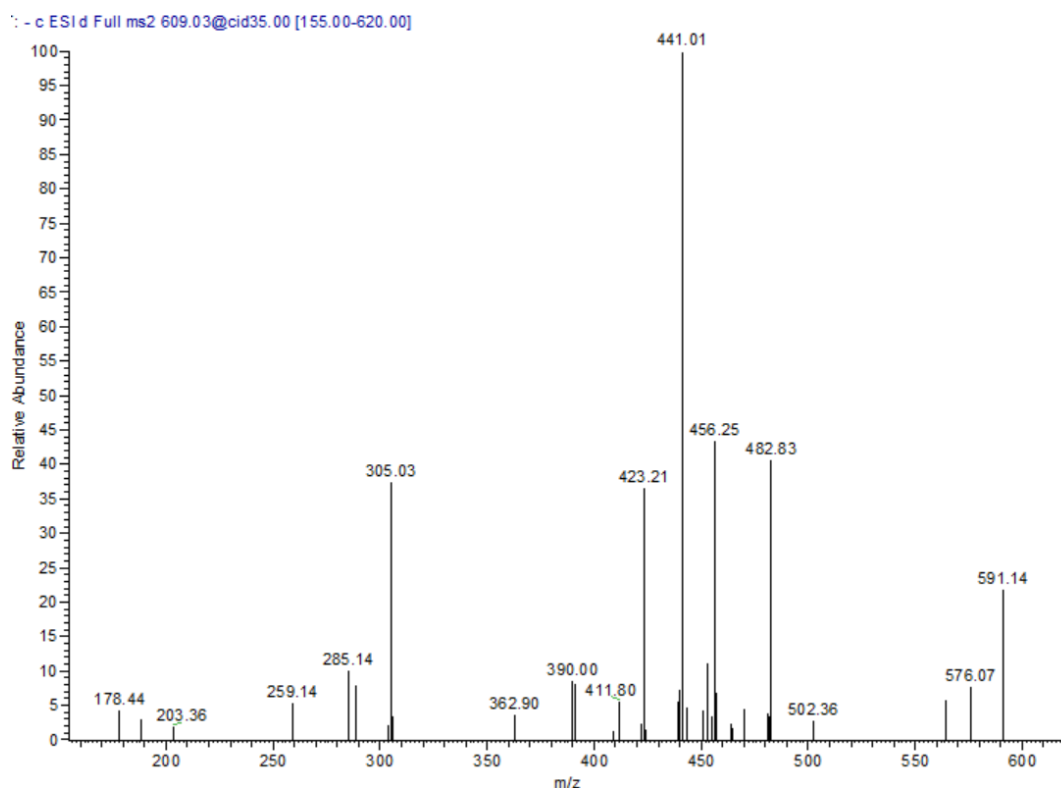
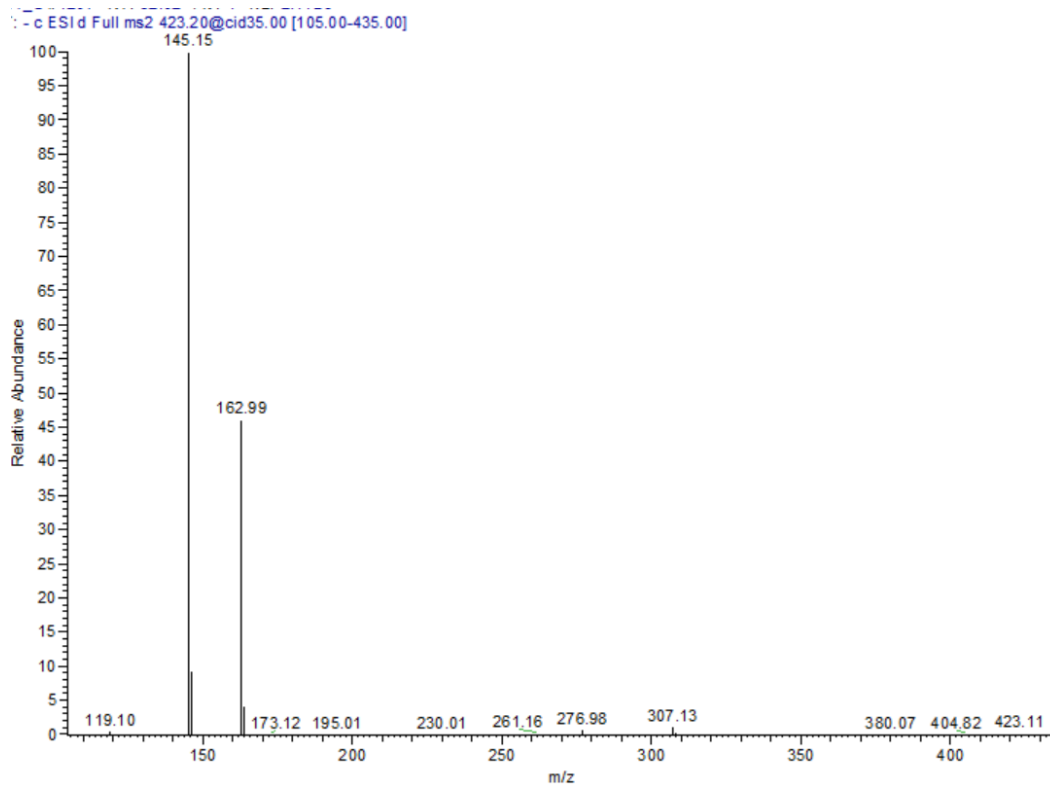


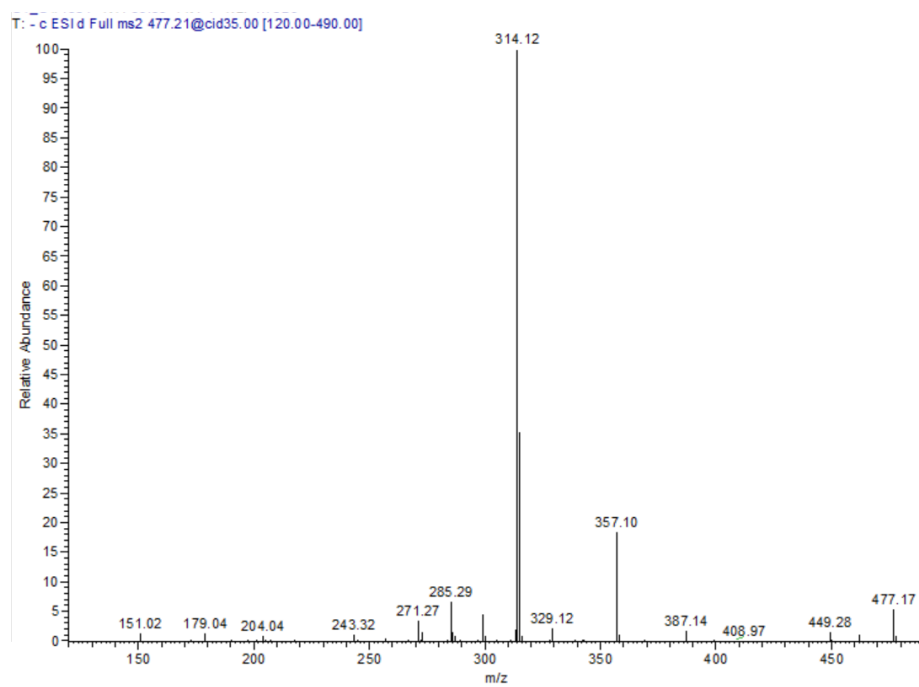
Figure S1. ESI-MS/MS of compound gallic acid glucuronide-glucoside (1) at [M - H]- 507



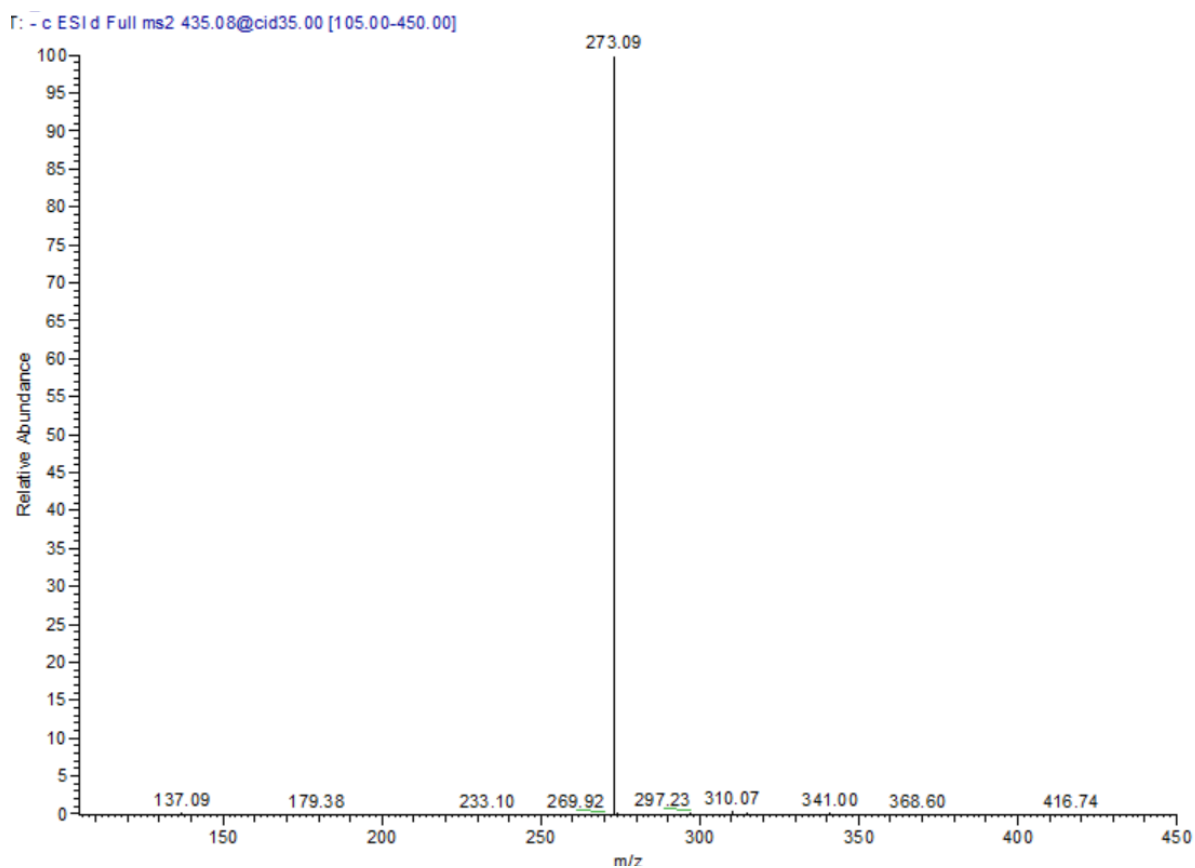
**Figure S2.** ESI-MS/MS of compound (epi)gallocatechin digallate (**7**) at  $[M - H]^-$  609



**Figure S3.** ESI-MS/MS of compound grandidentatin (**20**) at  $[M - H]^-$  423



**Figure S4.** ESI-MS/MS of compound isorhamnetin-3-*O*-glucoside (**22**) at  $[M - H]^-$  477



**Figure S5.** ESI-MS/MS of compound phlorizin (**26**) at  $[M - H]^-$  435