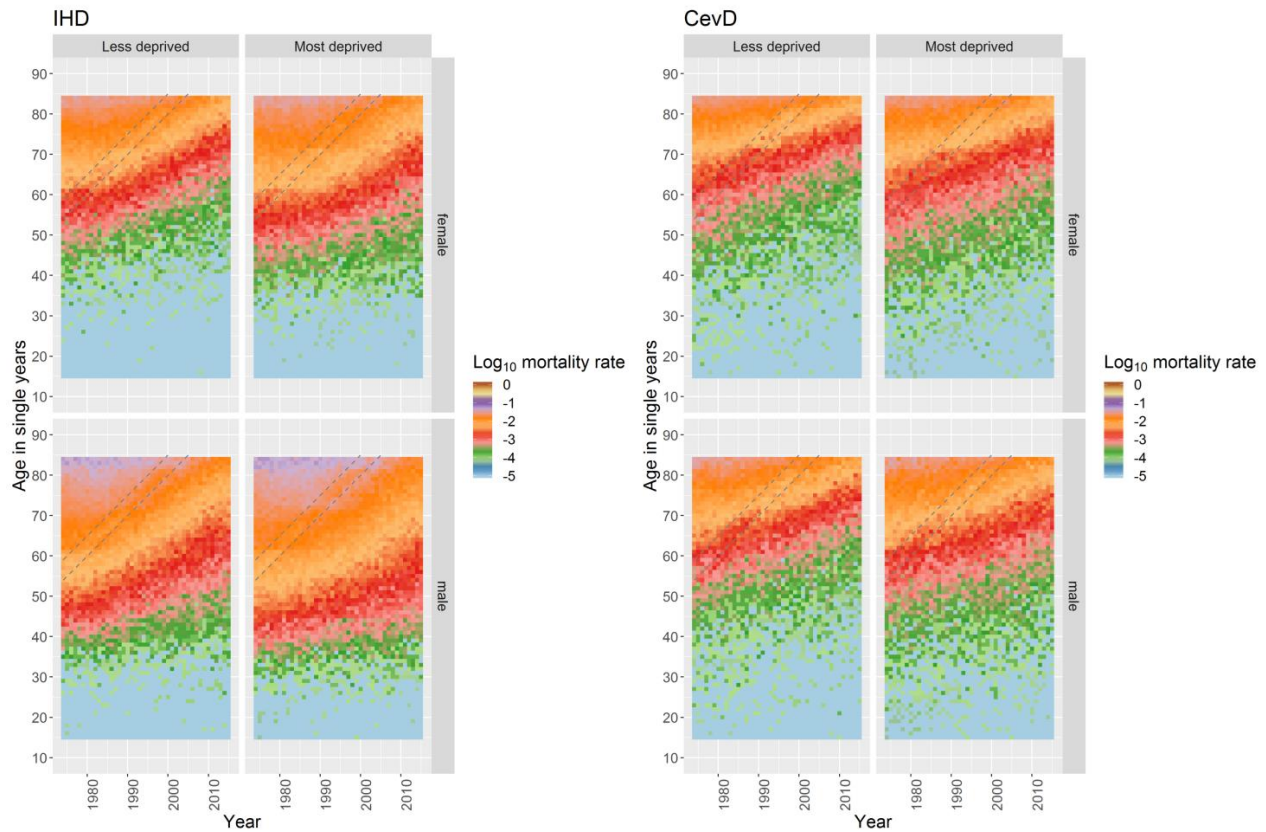


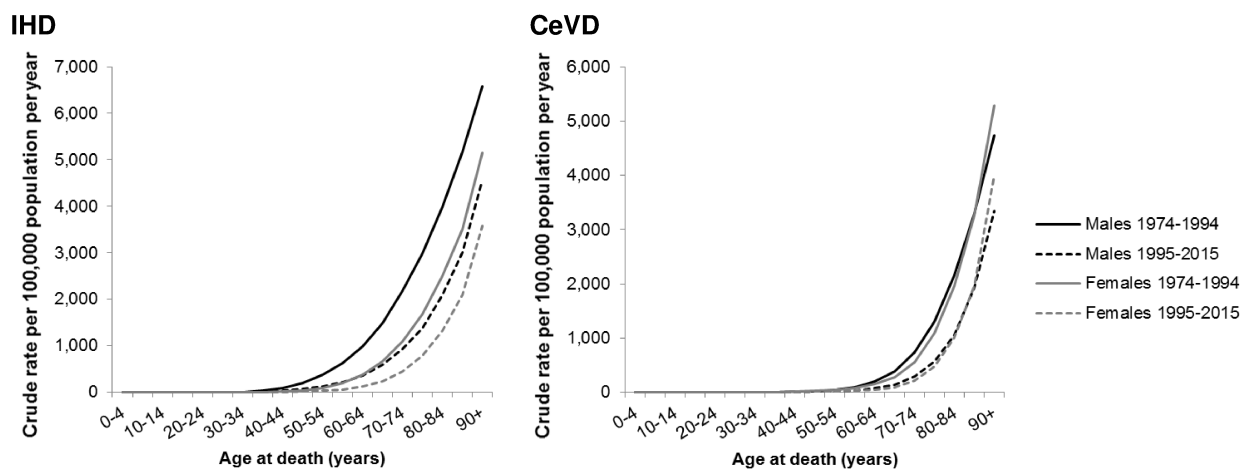
## SUPPLEMENTARY FIGURES

**Figure S1** Annotated version of Figure 5 showing apparent cohort effect for post-1918 birth cohort, differentially patterned by sex and deprivation\*



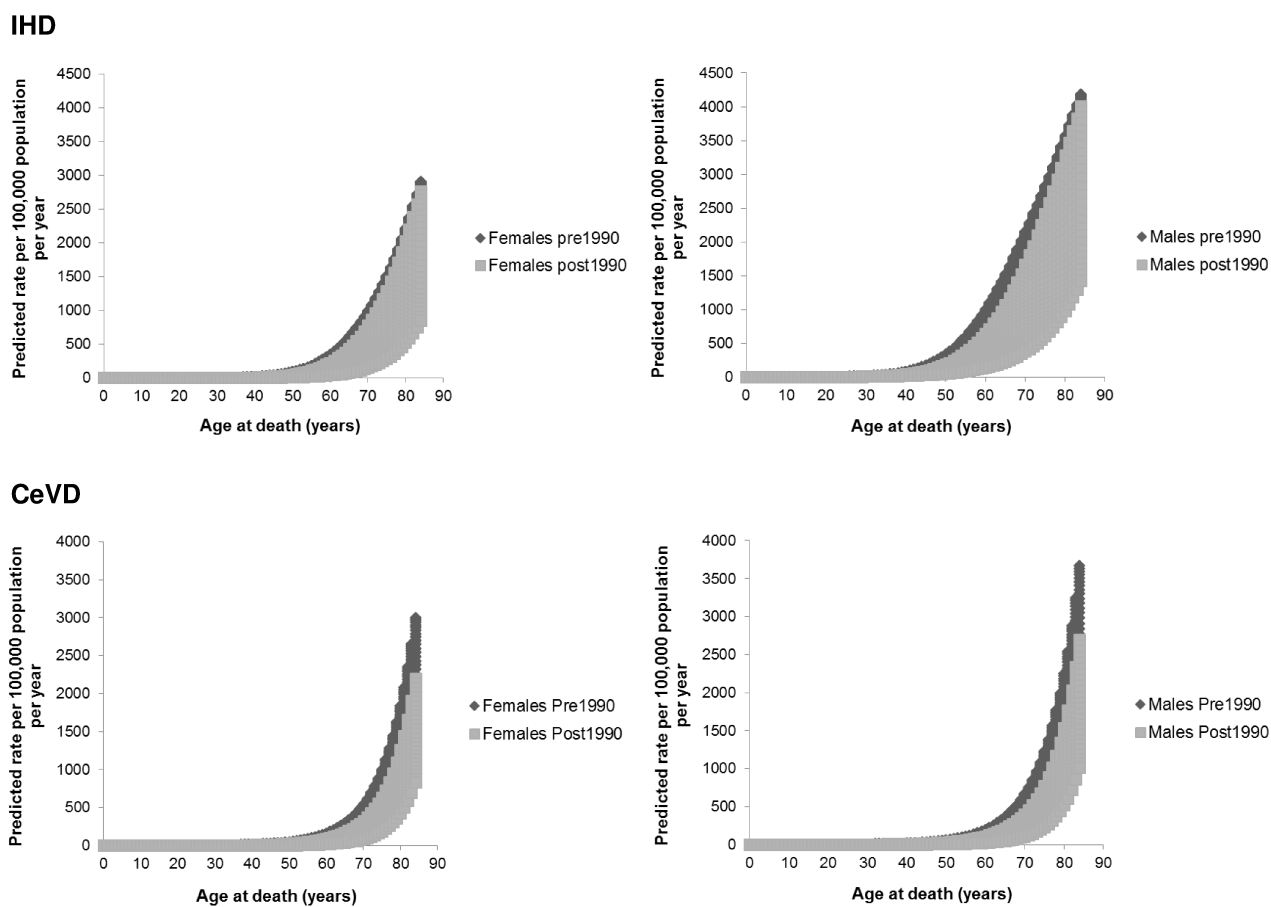
\* Diagonal lines follow a broad cohort over time. For ease of interpretation these begin at age 55 at the start of the series, 1955, and so are centred on tracking the 1920 cohort. However, the birth cohorts most affected are likely to be those born during and soon after 1918, with males more affected.

**Figure S2** Age distribution of crude IHD and CeVD rates per 100,000 population per year in Scotland over periods 1974-1994 and 1995-2015 combined data, by sex.\*



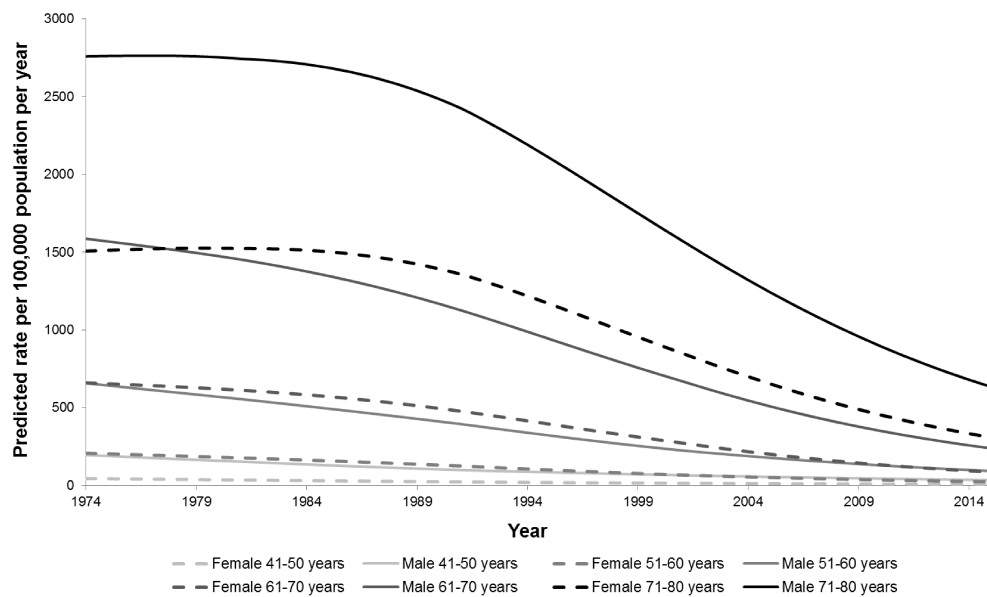
\* These age profiles show general trends with age across two time periods 1974-1994 and 1995-2015 and will have been affected by any age-period-cohort effects occurring during those periods.

**Figure S3** Predicted age distribution of crude IHD and CeVD rates per 100,000 population per year in Scotland over periods pre-1990 and post-1990 combined data, by sex.

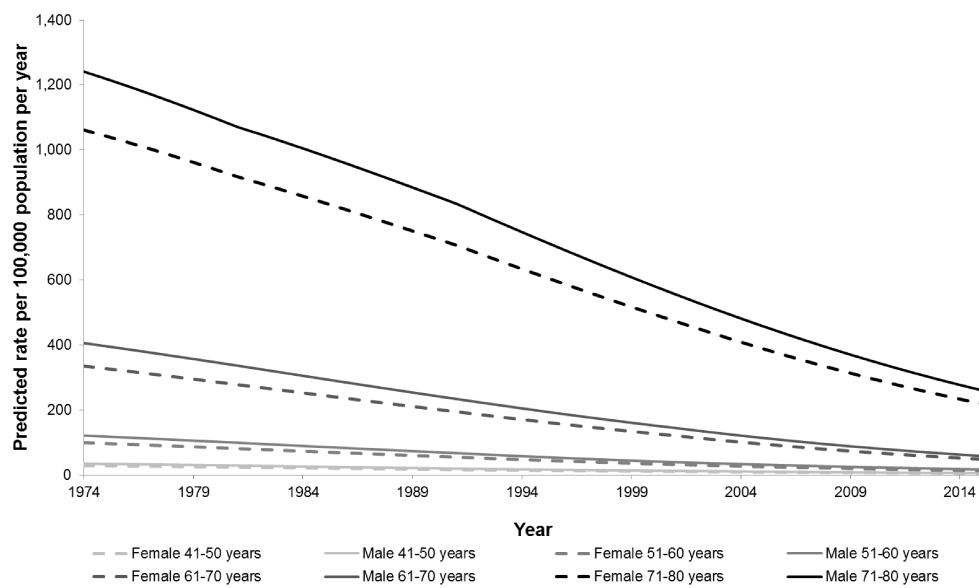


**Figure S4** Predicted IHD and CeVD rates per 100,000 population per year in Scotland 1974-2015, by sex and age

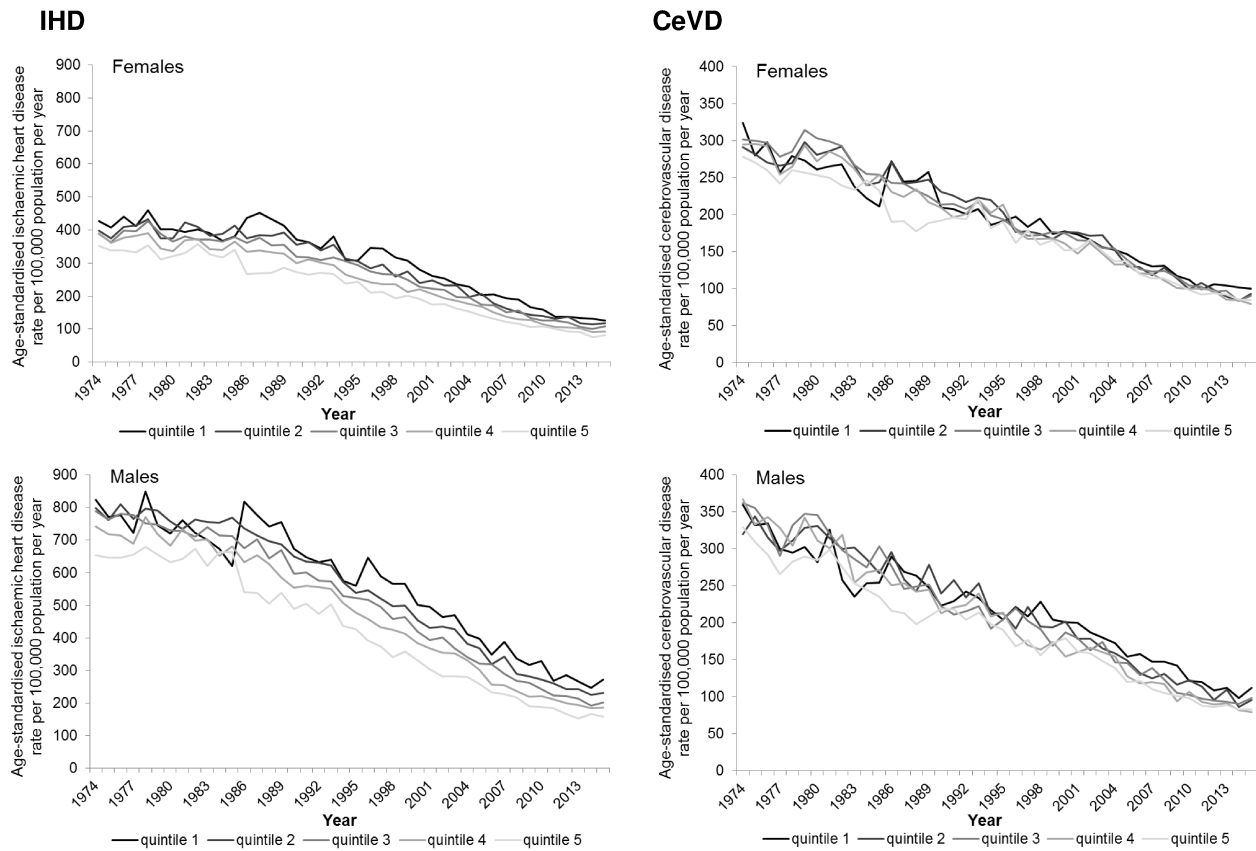
### IHD



### CeVD



**Figure S5** European age-standardised IHD and CeVD rate per 100,000 population per year in Scotland, 1974-2015, by sex and deprivation



**Figure S6** Age distribution of crude IHD and CeVD rates per 100,000 population per year in Scotland over periods 1974-1994 and 1995-2015 combined data, by sex and Carstairs.\*

### IHD



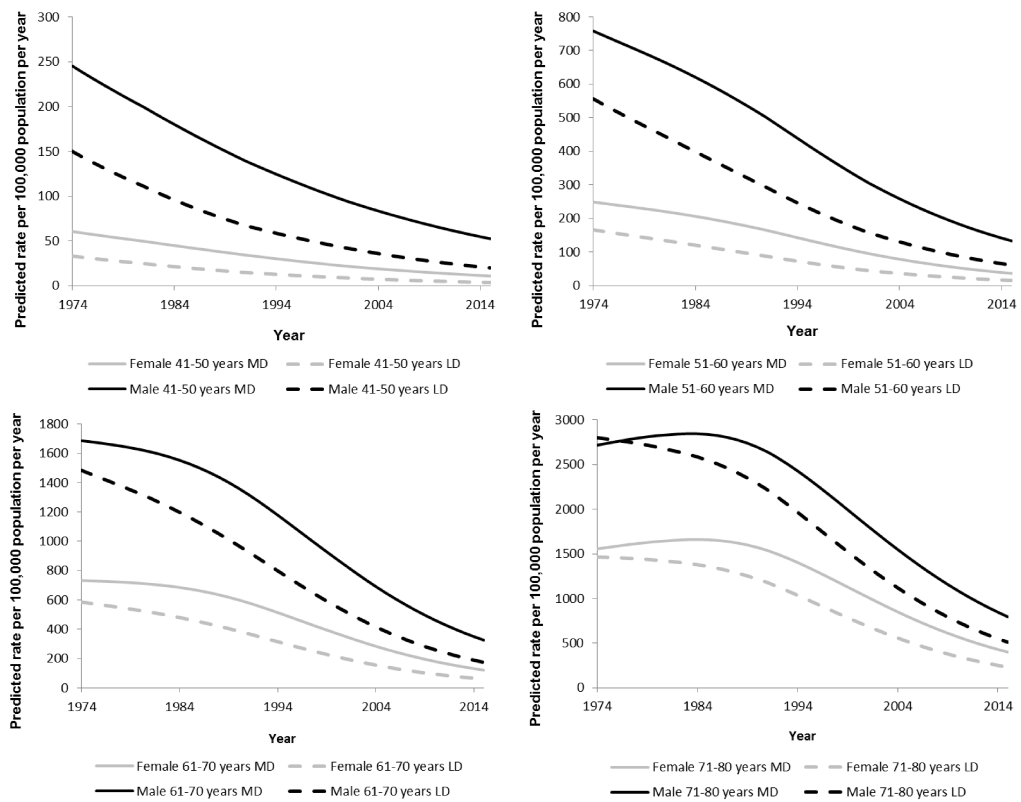
### CeVD



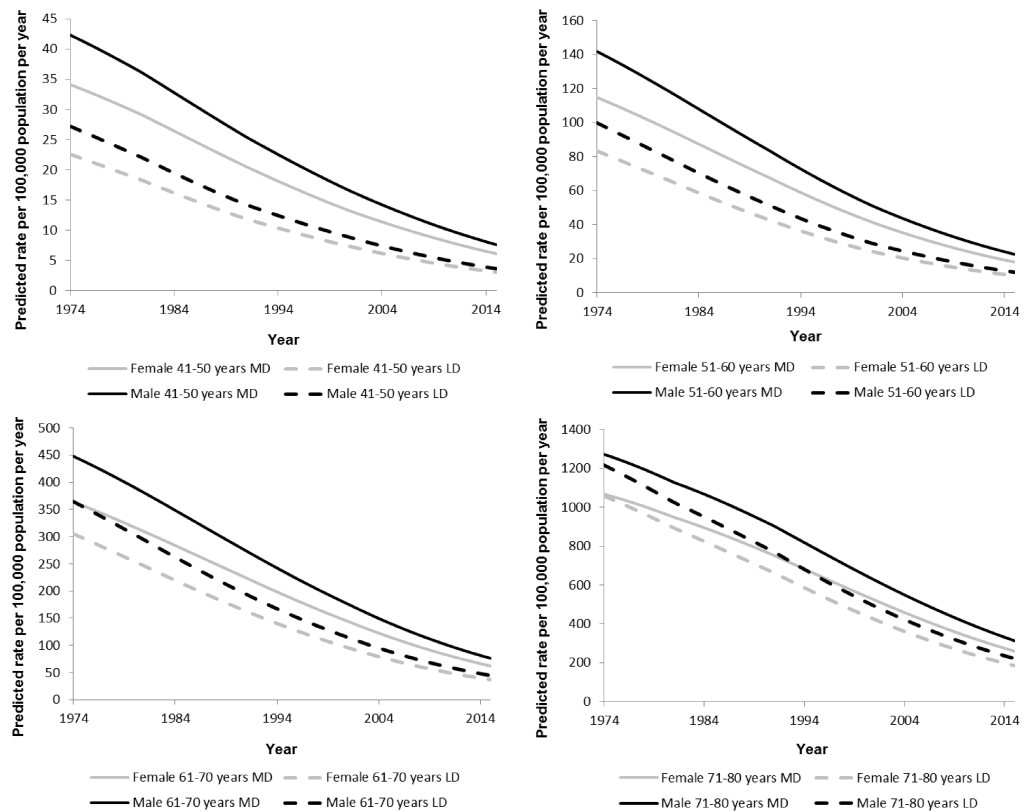
\* These age profiles show general trends with age across two time periods 1974-1994 and 1995-2015 and will have been affected by any age-period-cohort effects occurring during those periods. This compares the most deprived 40% of areas to the least deprived 40%.

**Figure S7** Predicted age distribution of crude IHD and CeVD rates per 100,000 population per year in Scotland, by sex and deprivation

**IHD**



**CeVD**



MD = most deprived 40% of Carstairs areas  
 LD = least deprived 40% of Carstairs areas