

## Appendix 3: Slope and relative index of inequality analysis

To present changes in the absolute and relative inequalities over the time period by sex, the slope and relative index of inequality (RII and SII) were estimated for the age-standardised death rates using the linear regression approach described by Pamuk 1985\*

Figure 1 Ischaemic heart disease age-standardised death rate A) slope index of inequality (SII) and B) relative index of inequality (RII) 3 year rolling averages per year in Scotland, 1974-2015 by sex

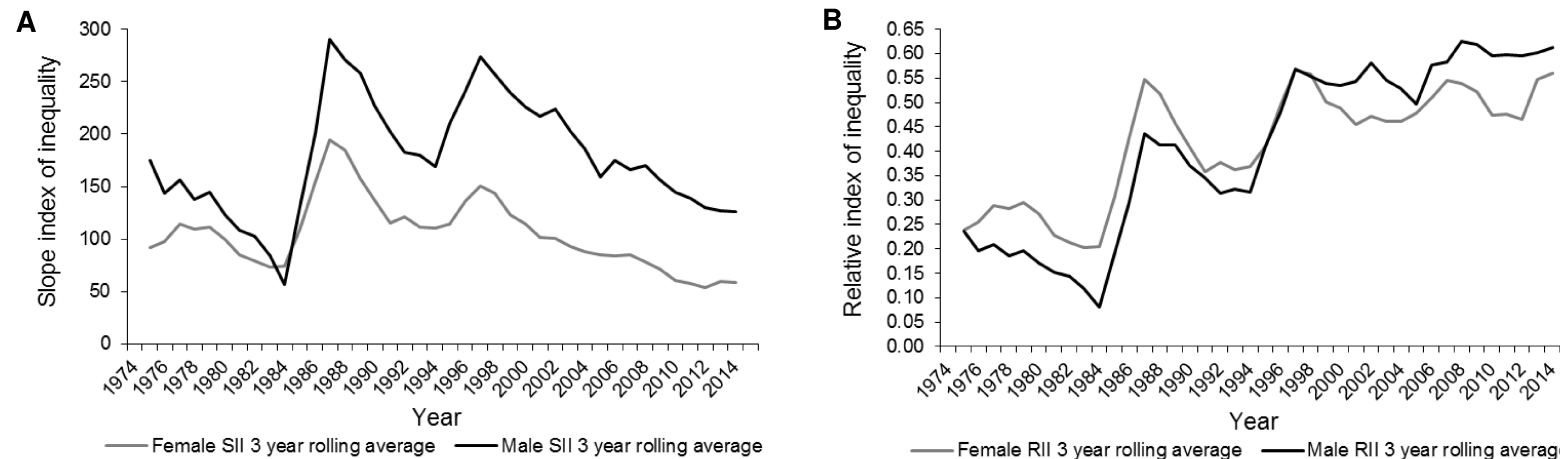
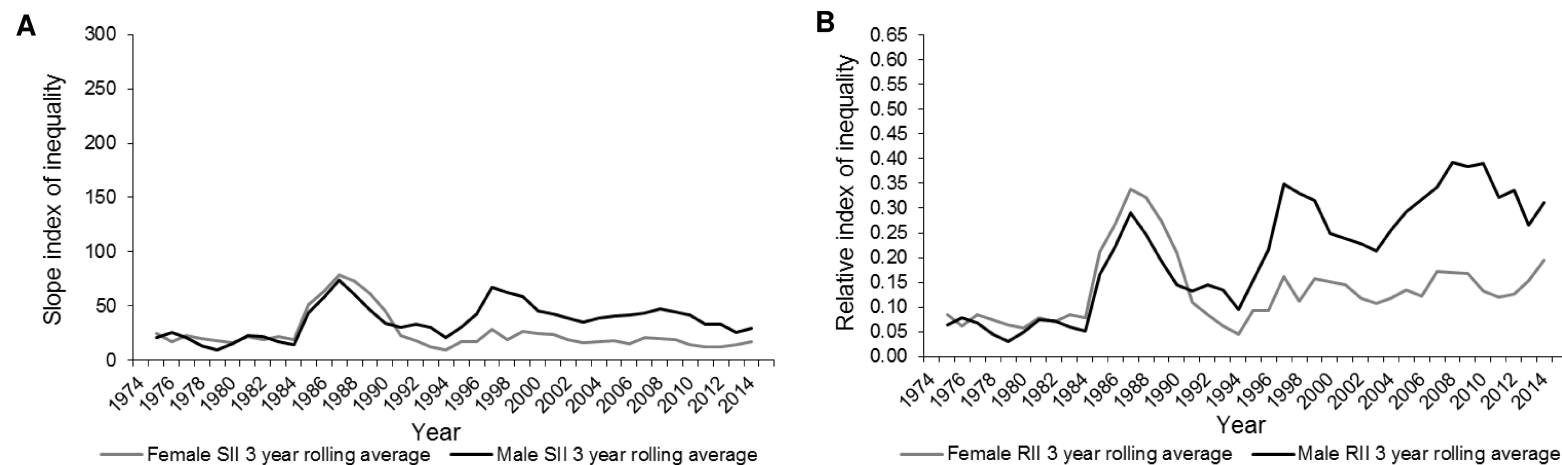


Figure 2 Cerebrovascular disease age-standardised death rate A) slope index of inequality (SII) and B) relative index of inequality (RII) 3 year rolling averages per year in Scotland, 1974-2015 by sex



\* Pamuk ER. Social class and inequality in mortality from 1921 to 1972 in England and Wales. *Population Studies* 1985;39:17-31

Table 1 Ischaemic heart disease age-standardised death rate A) slope index of inequality (SII) and relative index of inequality (RII) 3 year rolling averages per year in Scotland, 1974-2015 by sex

SII 3 year rolling average			RII 3 year rolling average		
Year	Female	Male	Year	Female	Male
1974			1974		
1975	91.98	175.13	1975	0.239	0.235
1976	97.43	143.82	1976	0.254	0.196
1977	114.14	156.09	1977	0.288	0.209
1978	109.68	138.12	1978	0.284	0.185
1979	111.85	144.43	1979	0.296	0.196
1980	99.60	123.25	1980	0.272	0.172
1981	84.97	108.83	1981	0.229	0.153
1982	79.53	102.89	1982	0.213	0.144
1983	73.70	83.60	1983	0.202	0.119
1984	74.28	56.29	1984	0.204	0.080
1985	109.66	130.81	1985	0.307	0.193
1986	154.04	200.07	1986	0.428	0.296
1987	194.91	290.80	1987	0.548	0.437
1988	184.38	270.58	1988	0.517	0.414
1989	157.68	258.25	1989	0.457	0.412
1990	137.10	227.04	1990	0.409	0.371
1991	114.82	202.50	1991	0.358	0.346
1992	121.09	182.73	1992	0.377	0.315
1993	111.85	179.75	1993	0.362	0.322
1994	110.52	168.73	1994	0.369	0.315
1995	114.32	210.49	1995	0.411	0.411
1996	135.49	240.25	1996	0.496	0.483
1997	150.31	273.56	1997	0.566	0.568
1998	143.98	257.42	1998	0.558	0.555
1999	123.17	239.37	1999	0.501	0.539
2000	114.74	226.14	2000	0.488	0.534
2001	101.25	216.66	2001	0.455	0.544
2002	100.45	223.77	2002	0.471	0.580
2003	93.10	202.04	2003	0.460	0.545
2004	87.85	185.99	2004	0.462	0.529
2005	84.96	159.69	2005	0.479	0.497
2006	83.91	175.24	2006	0.509	0.576
2007	84.56	166.30	2007	0.546	0.583
2008	77.96	169.79	2008	0.539	0.625
2009	71.37	156.80	2009	0.521	0.618
2010	60.45	144.39	2010	0.474	0.595
2011	57.89	138.33	2011	0.477	0.598
2012	53.49	129.55	2012	0.465	0.595
2013	59.20	126.63	2013	0.547	0.602
2014	58.20	125.82	2014	0.559	0.613
2015			2015		

Table 2 Cerebrovascular disease age-standardised death rate A) slope index of inequality (SII) and relative index of inequality (RII) 3 year rolling averages per year in Scotland, 1974-2015 by sex

SII 3 year rolling average			RII 3 year rolling average		
Year	Female	Male	Year	Female	Male
1974			1974		
1975	24.61	20.97	1975	0.084	0.063
1976	16.65	25.40	1976	0.061	0.079
1977	22.94	21.28	1977	0.084	0.068
1978	20.20	13.59	1978	0.074	0.045
1979	17.56	9.68	1979	0.063	0.031
1980	15.80	15.55	1980	0.056	0.050
1981	21.42	22.55	1981	0.078	0.074
1982	19.30	21.67	1982	0.071	0.072
1983	22.02	16.78	1983	0.085	0.060
1984	19.05	13.79	1984	0.079	0.052
1985	50.66	43.92	1985	0.211	0.165
1986	63.20	57.50	1986	0.268	0.222
1987	78.65	73.39	1987	0.339	0.291
1988	72.78	60.12	1988	0.321	0.246
1989	61.20	46.19	1989	0.274	0.193
1990	45.75	34.16	1990	0.208	0.144
1991	22.84	29.93	1991	0.109	0.133
1992	17.55	32.96	1992	0.084	0.145
1993	12.77	30.12	1993	0.062	0.135
1994	9.30	20.57	1994	0.045	0.095
1995	17.11	30.65	1995	0.093	0.152
1996	16.81	42.81	1996	0.093	0.216
1997	28.29	67.18	1997	0.161	0.350
1998	19.36	62.22	1998	0.112	0.331
1999	26.77	58.25	1999	0.157	0.315
2000	24.95	44.97	2000	0.150	0.249
2001	23.88	42.41	2001	0.144	0.239
2002	18.91	38.89	2002	0.118	0.227
2003	16.17	34.92	2003	0.107	0.214
2004	17.46	38.40	2004	0.119	0.255
2005	18.25	40.87	2005	0.134	0.292
2006	15.29	42.07	2006	0.121	0.317
2007	20.94	43.66	2007	0.171	0.343
2008	19.97	47.00	2008	0.170	0.393
2009	18.94	44.24	2009	0.168	0.384
2010	13.82	41.90	2010	0.132	0.391
2011	12.01	32.92	2011	0.120	0.323
2012	12.19	33.20	2012	0.126	0.337
2013	14.09	25.10	2013	0.153	0.266
2014	17.30	29.13	2014	0.194	0.312
2015			2015		