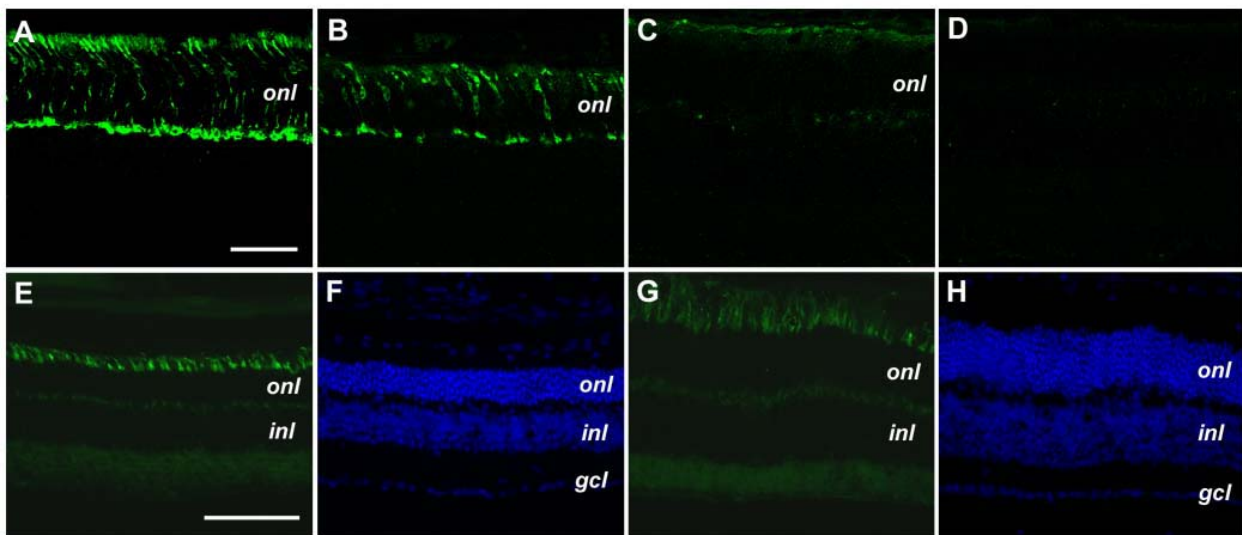


Molecular and cellular alterations induced by sustained expression of ciliary neurotrophic factor in a mouse model of retinitis pigmentosa

Kun Do Rhee^a, Alberto Ruiz^a, Jacque L. Duncan^e, William W. Hauswirth^f,
Matthew M. LaVail^e, Dean Bok^{abc*}, and Xian-Jie Yang^{abd*}

Suppl. Figure 1



Supplemental Figure 1. Effects of rAAV-CNTF on cone specific genes in the rds retina.

Immunofluorescent images of adult wild-type (WT) retina (A), untreated P90 *rds* retina (B, D, E, F), and P90 *rds* retinas treated with rAAV-CNTF at P23 (C, G, H) labeled for mCAR (A-C), PNA (E, G) and DAPI (F, H) are shown. Panels F and H are corresponding sections of E and G, respectively. Panel D shows the signal level for secondary antibody alone. Scales bars in A and E represent 50 μm and 100 μm for A-D and E-H, respectively. *onl*, outer nuclear layer; *inl*, inner nuclear layer; *gcl*, ganglion cell layer.