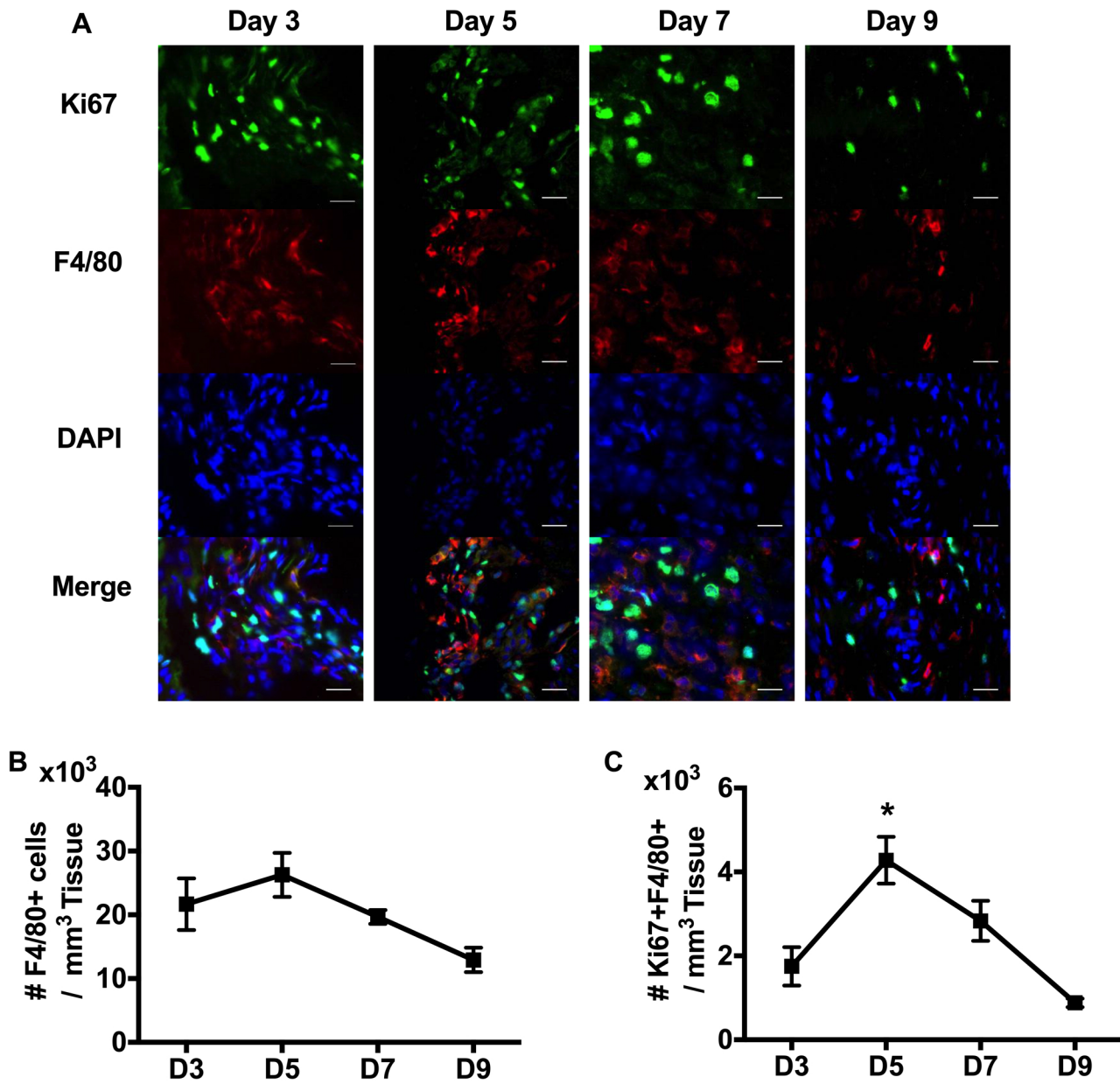


# Supplementary Figure 1



**Supplementary Figure 1.** (A) Wound cryosections were stained for Ki67 (Green), F4/80 (Red), DAPI (Blue) on day 3, 5, 7, and 9 post-injury, scale bar = 50  $\mu$ m. (B) and (C) Numbers of F4/80+ M $\Phi$  and Ki67+F4/80+ M $\Phi$  per mm<sup>3</sup> wound tissues were evaluated from immunofluorescent stained wound cryosections. For each graph, data were from a single experiment with data for two wounds pooled for each of N=4 mice; data expressed as mean  $\pm$  SEM; \*P < 0.05 vs cell number on day 3 post-wounding by ANOVA.