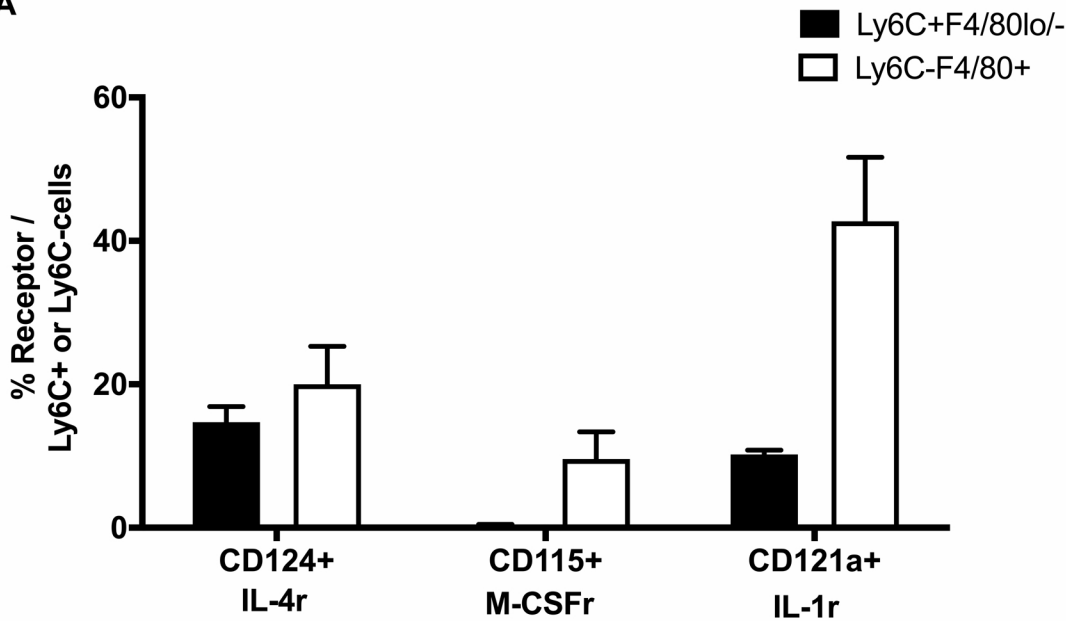
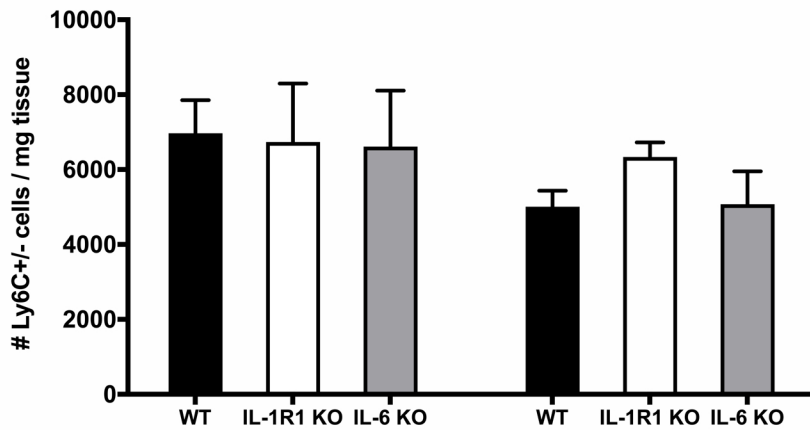


Supplementary Figure 3

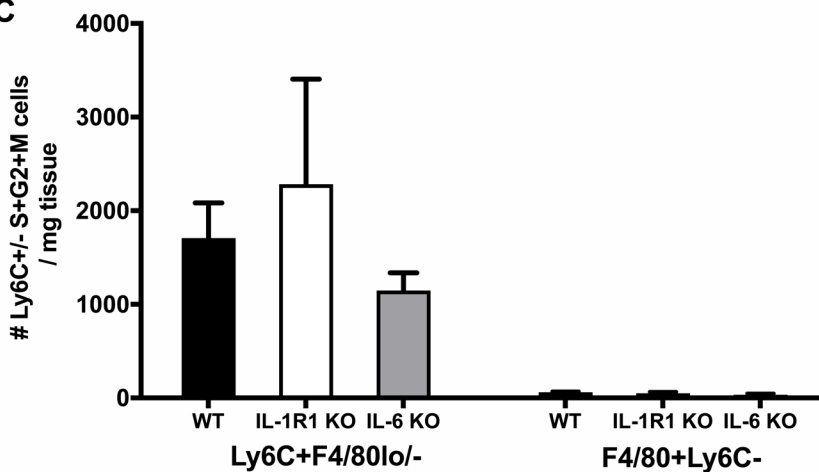
A



B



C



Supplementary Figure 3. (A) Surface expression of CD124 (IL-4 receptor), CD115 (M-CSF receptor), and CD121a (IL-1 receptor) evaluated by flow cytometry in Ly6C+F4/80lo/- Mo/MΦ (black bar) and Ly6C-F4/80+ MΦ (open bar) in skin wounds on day 1 post-injury (n=4). (B) Numbers of either Ly6C+F4/80lo/- Mo/MΦ or Ly6C-F4/80+ MΦ in WT (n=11, black bar), IL-1R1 KO (n=4, open bar), and IL-6 KO (n=8, grey bar) in skin wounds on day 6 post-wounding. (C) Numbers of Ki67+FxCycle+ cells (S/G2/M phases) in either Ly6C+F4/80lo/- Mo/MΦ or Ly6C-F4/80+ MΦ in WT (n=11, black bar), IL-1R1 KO (n=4, open bar), and IL-6 KO (n=8, grey bar) in skin wounds on day 6 post-wounding. For each graph, data were pooled over two separate experiments; sample sizes given are pooled over experiments. Data expressed as mean ± SEM.