

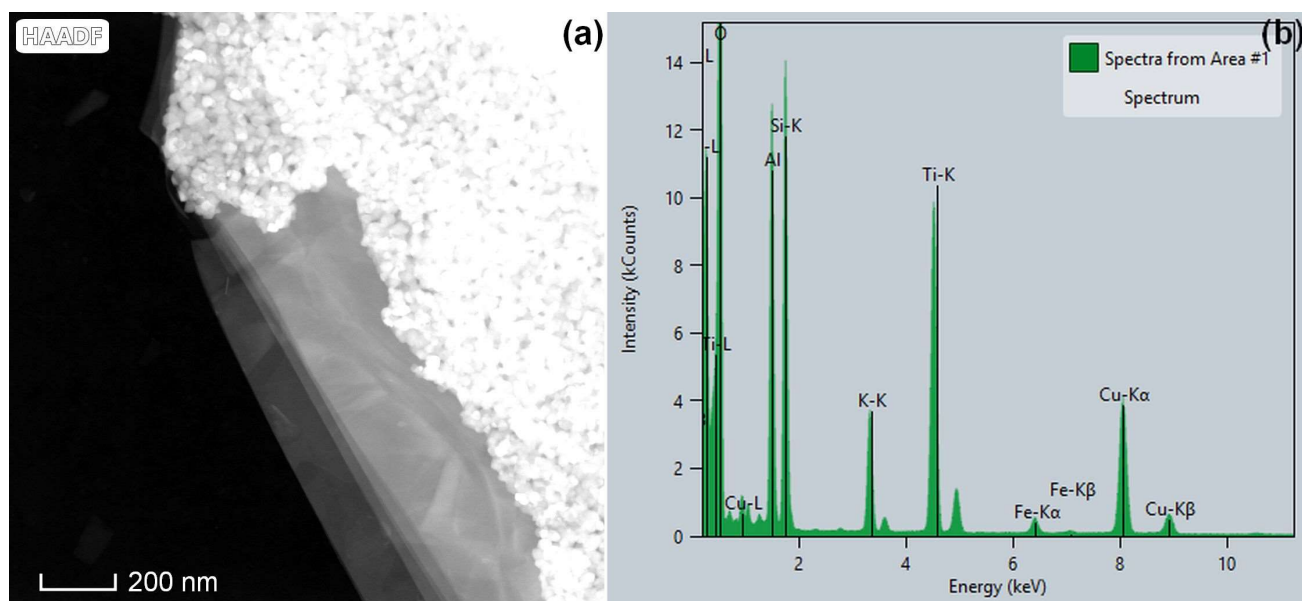
Supplementary Materials

Physicochemical Characterization of the Pristine E171 Food Additive by Standardized and Validated Methods

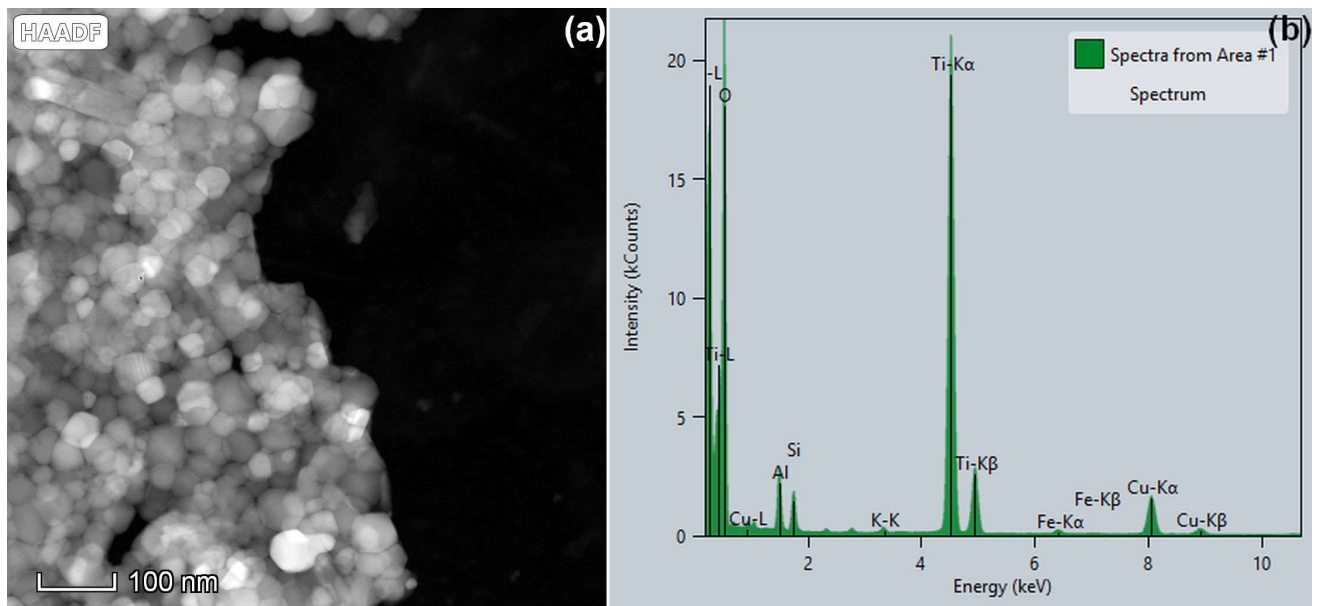
Eveline Verleysen ^{1,*}, Nadia Waegeneers ², Frédéric Brassinne ¹, Sandra De Vos ¹, Isaac Ojea Jimenez ¹, Stella Mathioudaki ¹ and Jan Mast ¹

- 1 Trace elements and nanomaterials, Sciensano, Groeselenbergstraat 99, 1180 Uccle, Belgium; Frederic.Brassinne@sciensano.be (F.B.); Sandra.DeVos@sciensano.be (S.D.V.); isaac.ojea.jimenez@gmail.com (I.O.J.); stella.mathioudaki@sciensano.be (S.M.); jan.mast@sciensano.be (J.M.)
 - 2 Trace elements and nanomaterials, Sciensano, Leuvensesteenweg 17, 3080 Tervuren, Belgium; nadia.waegeneers@sciensano.be
- * Correspondence: eveline.verleysen@sciensano.be; Tel.: +32-2-379-0546

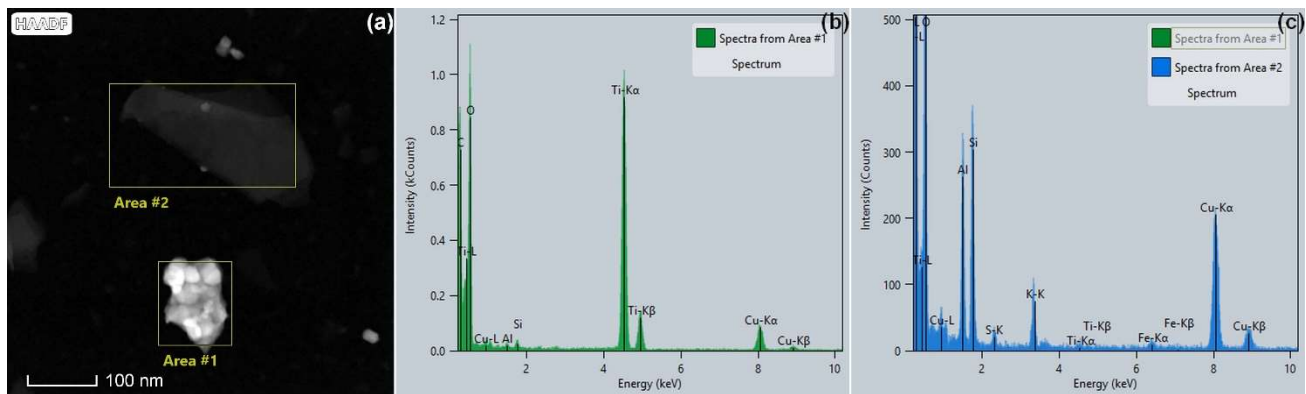
Figure S1. EDX analyses of pearlescent pigments



S1A. (a) HAADF-STEM image, and (b) corresponding EDX spectrum of the whole region shown in (a), illustrating the presence of TiO₂ aggregates consisting of many particles on top of mica.

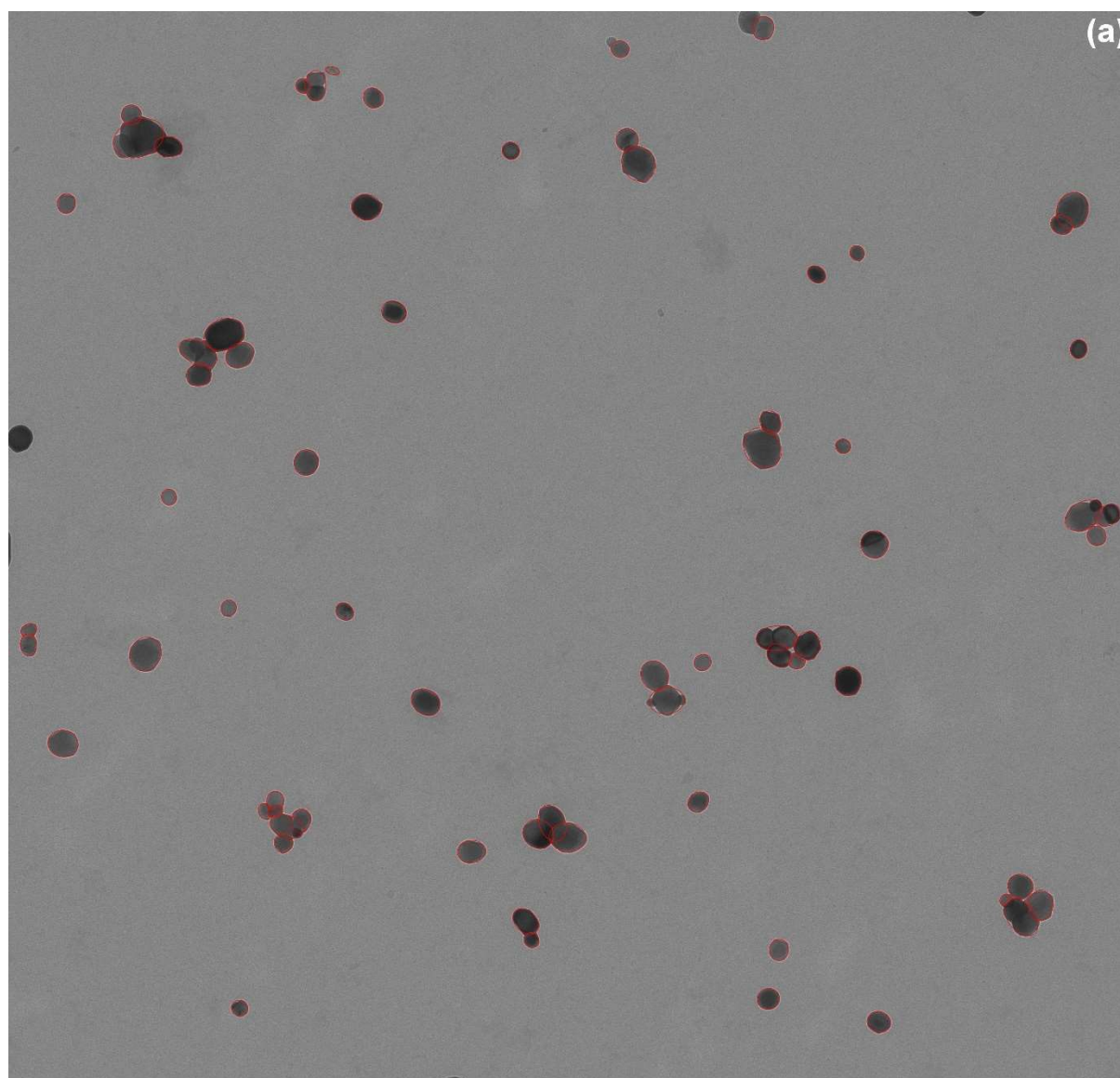


S1B. (a) HAADF-STEM image, and corresponding EDX spectrum of the whole region shown in (a), illustrating the presence of TiO₂ aggregates which contain localized mica parts.



S1C. (a) HAADF-STEM image, and corresponding EDX spectra of area 1 and area 2 indicated on the STEM image shown in (a), illustrating the presence of separated TiO₂ aggregates and mica flakes.

Figure S2. Annotated TEM images of (a) an anatase E171 material analysed by ellipse fitting and (b) a pearlescent pigment analysed by irregular watershed segmentation. Particle measurement is indicated in red.



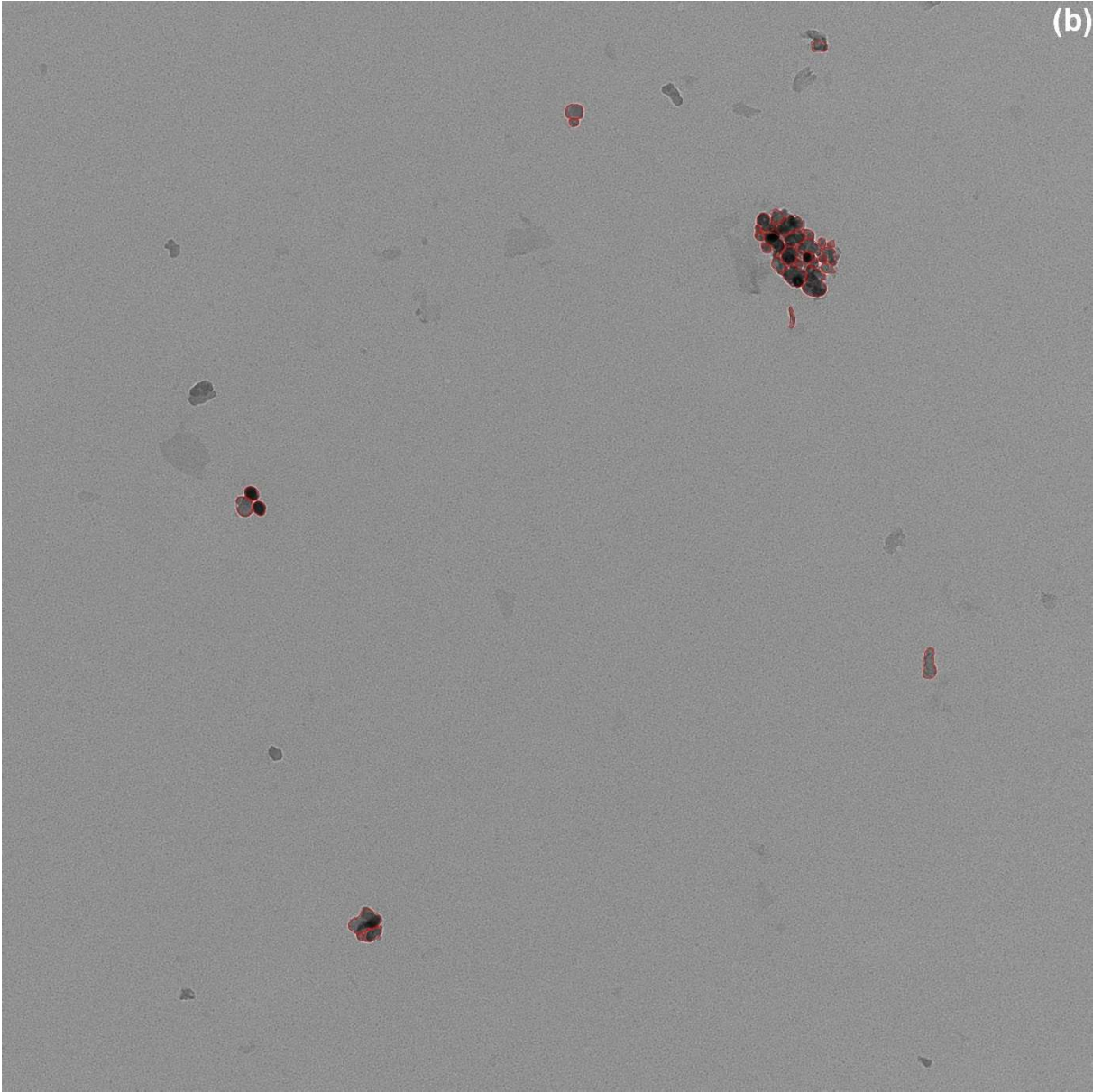
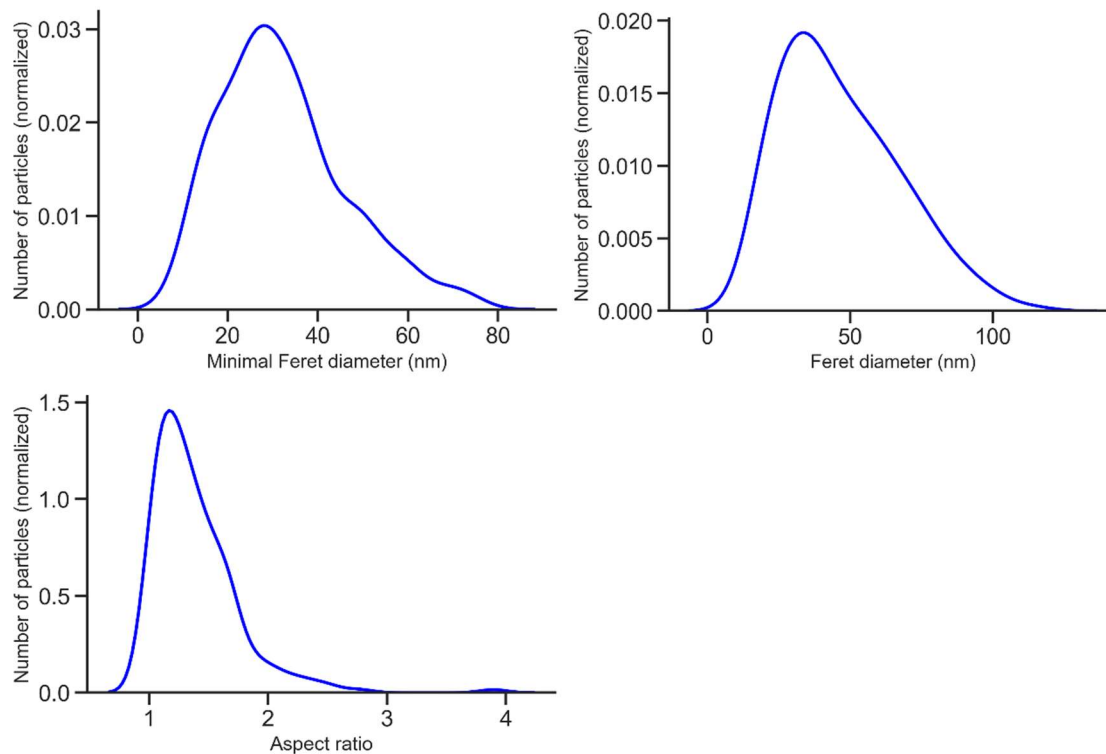
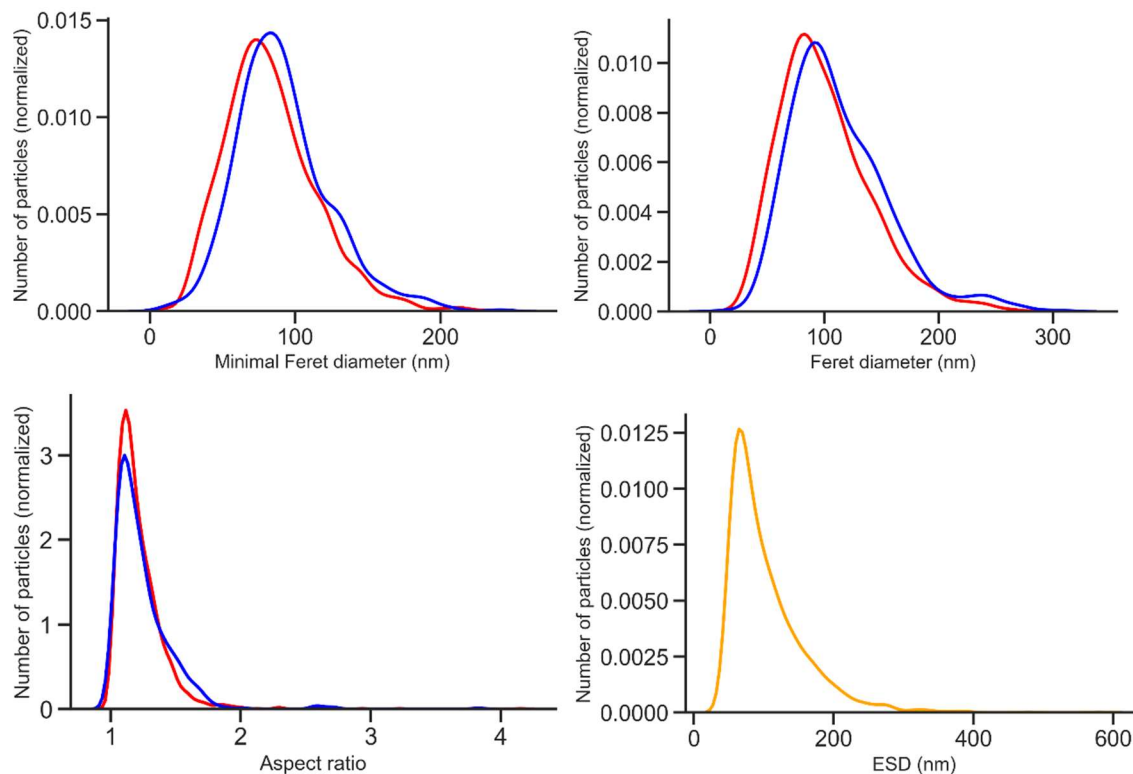


Figure S3. Number based distributions (normalized representation based on kernel density estimation) of the 15 E171 materials obtained by TEM and spICP-MS analysis. The distributions of the Fmin, Fmax and AR obtained by TEM, prepared by sample preparation protocols P1 and P6 are shown in blue and red, respectively. The ESD distributions obtained by spICP-MS are shown in orange.

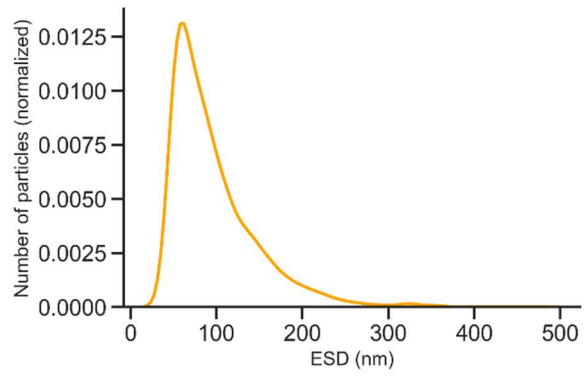
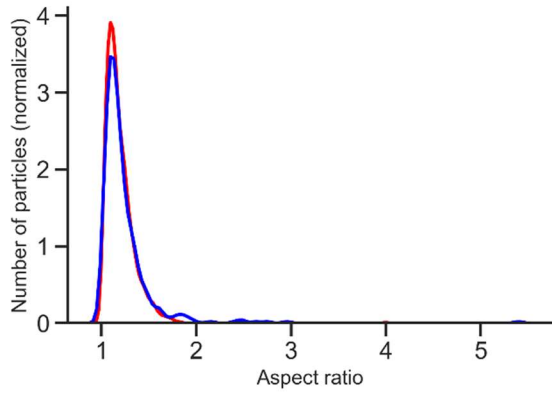
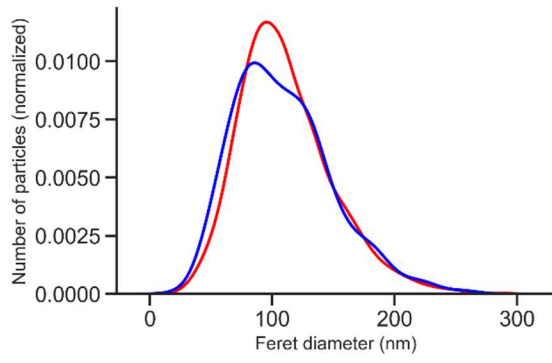
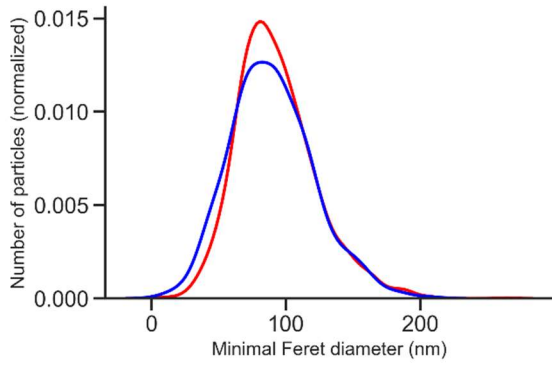
E171-01



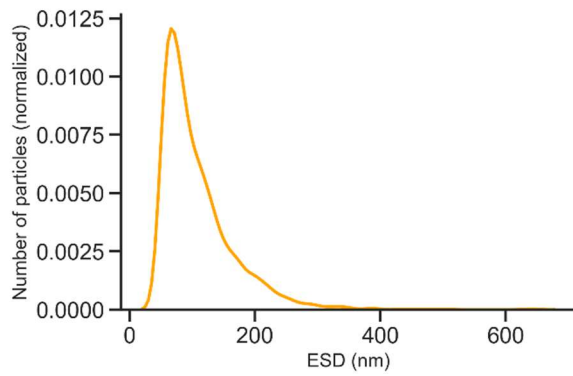
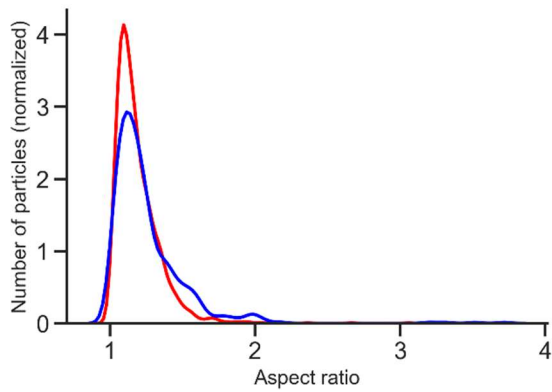
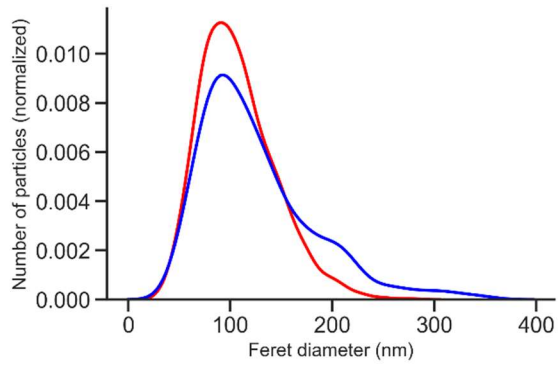
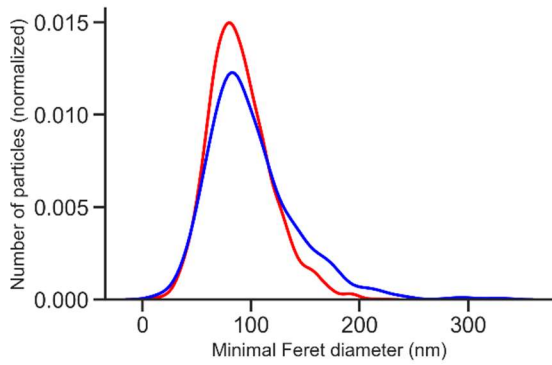
E171-02



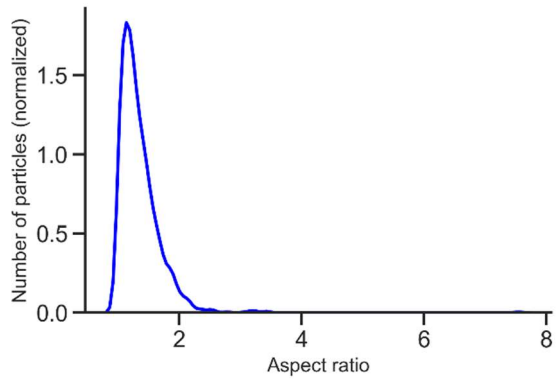
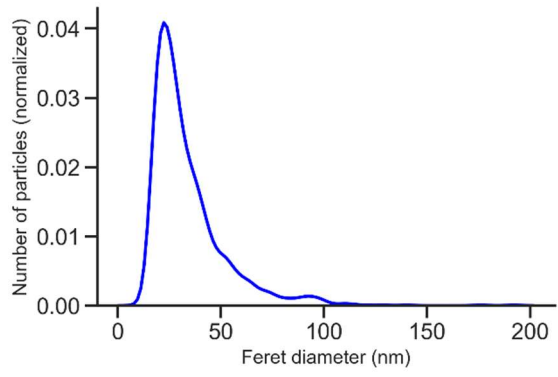
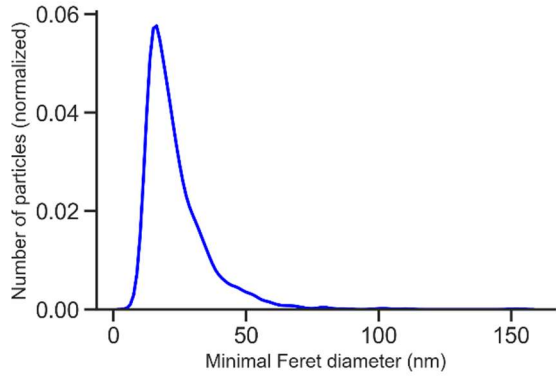
E171-03



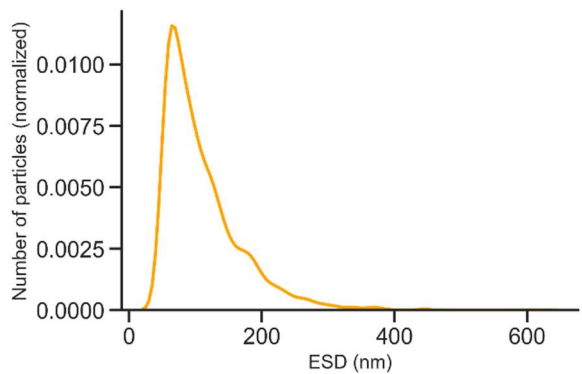
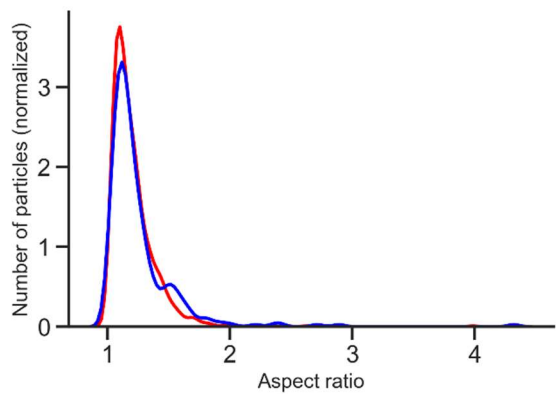
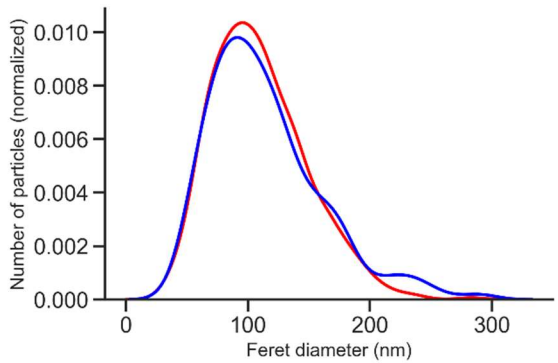
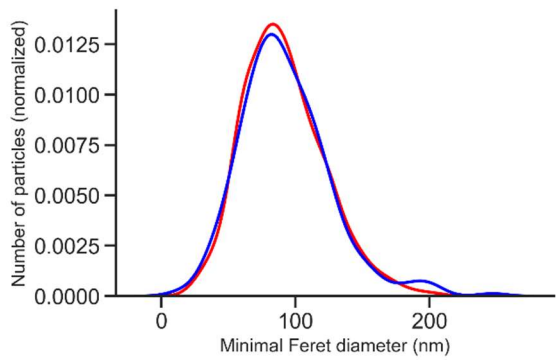
E171-04



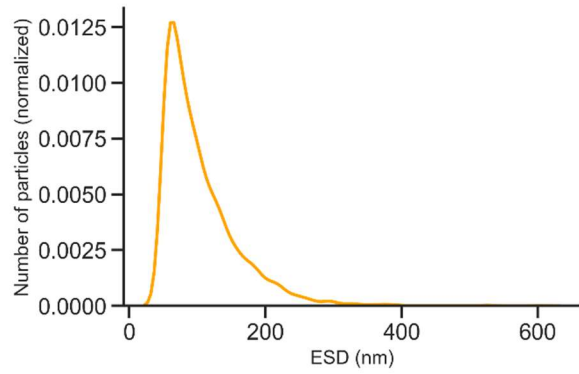
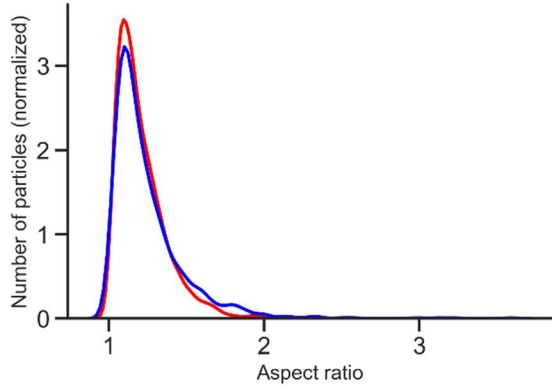
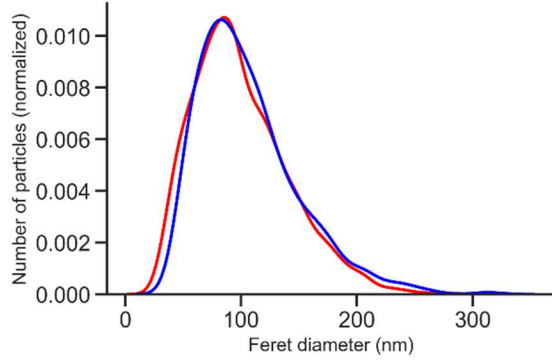
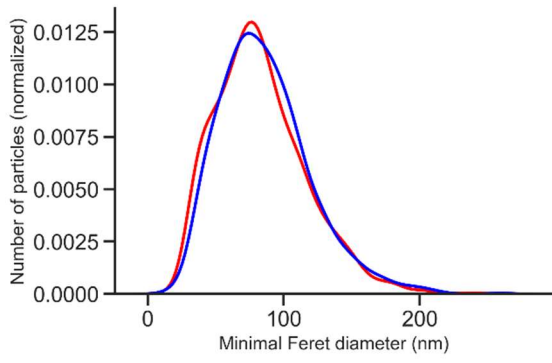
E171-05



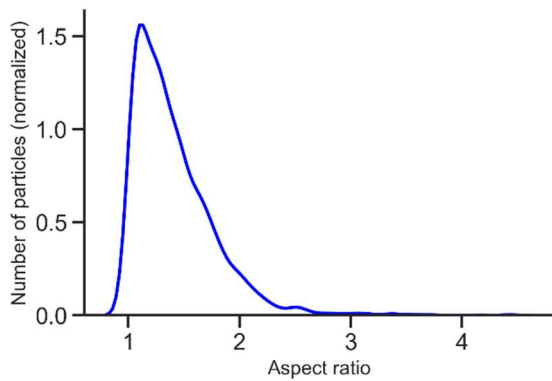
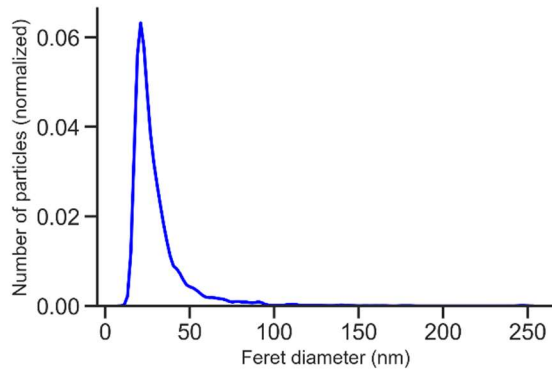
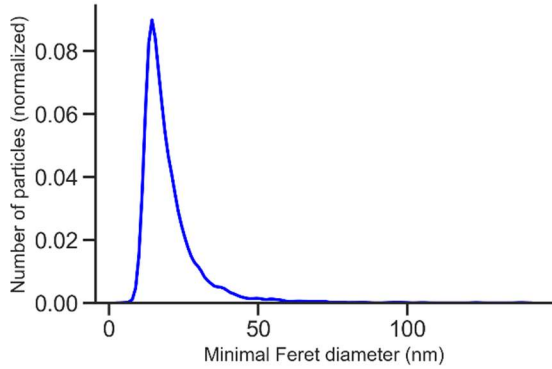
E171-06



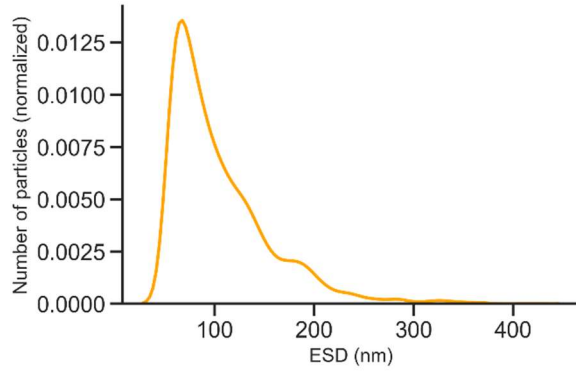
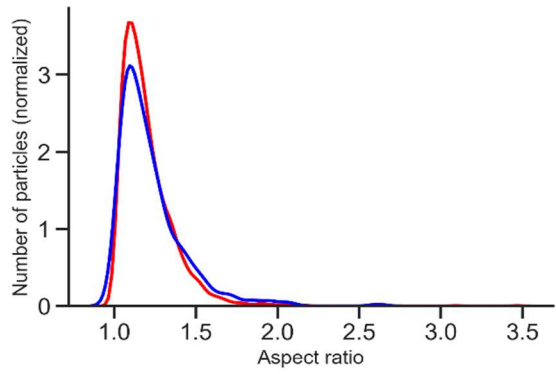
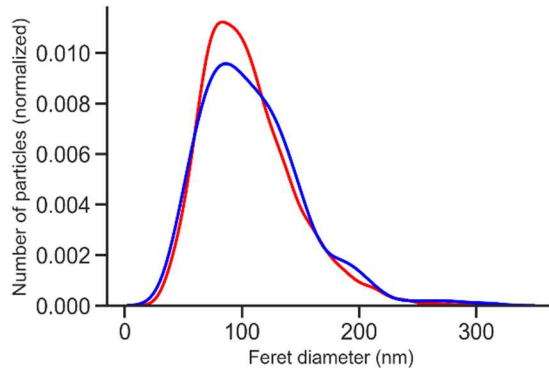
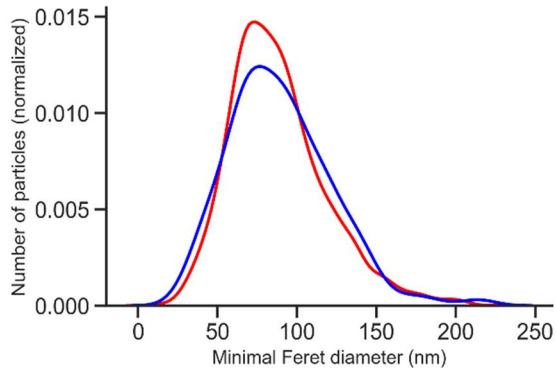
E171-07



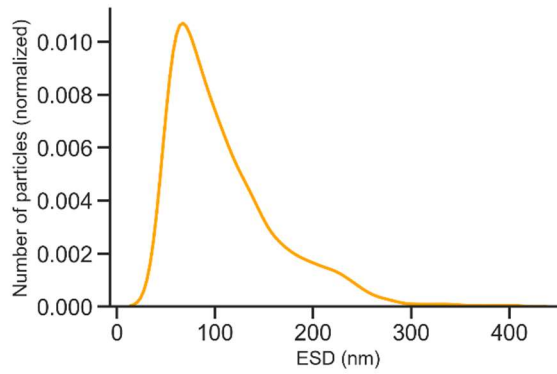
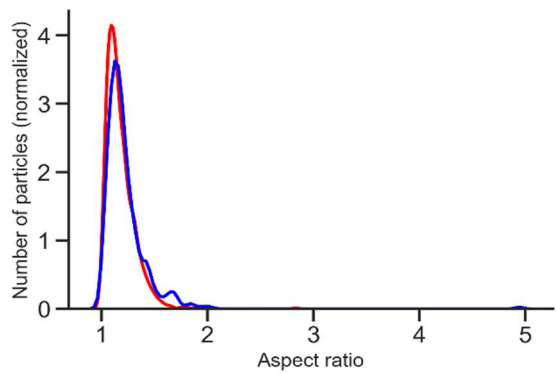
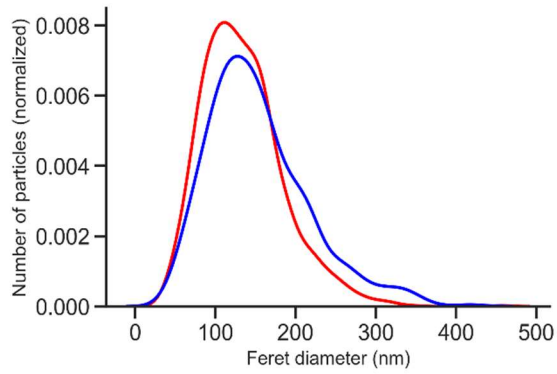
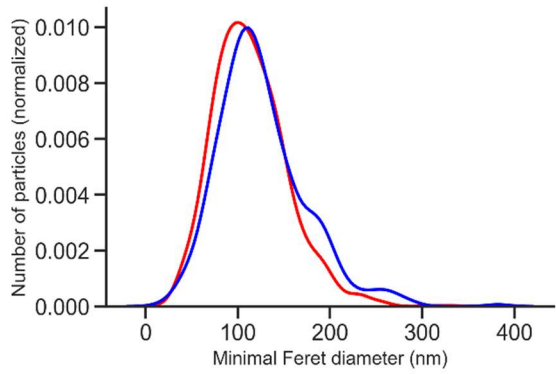
E171-08



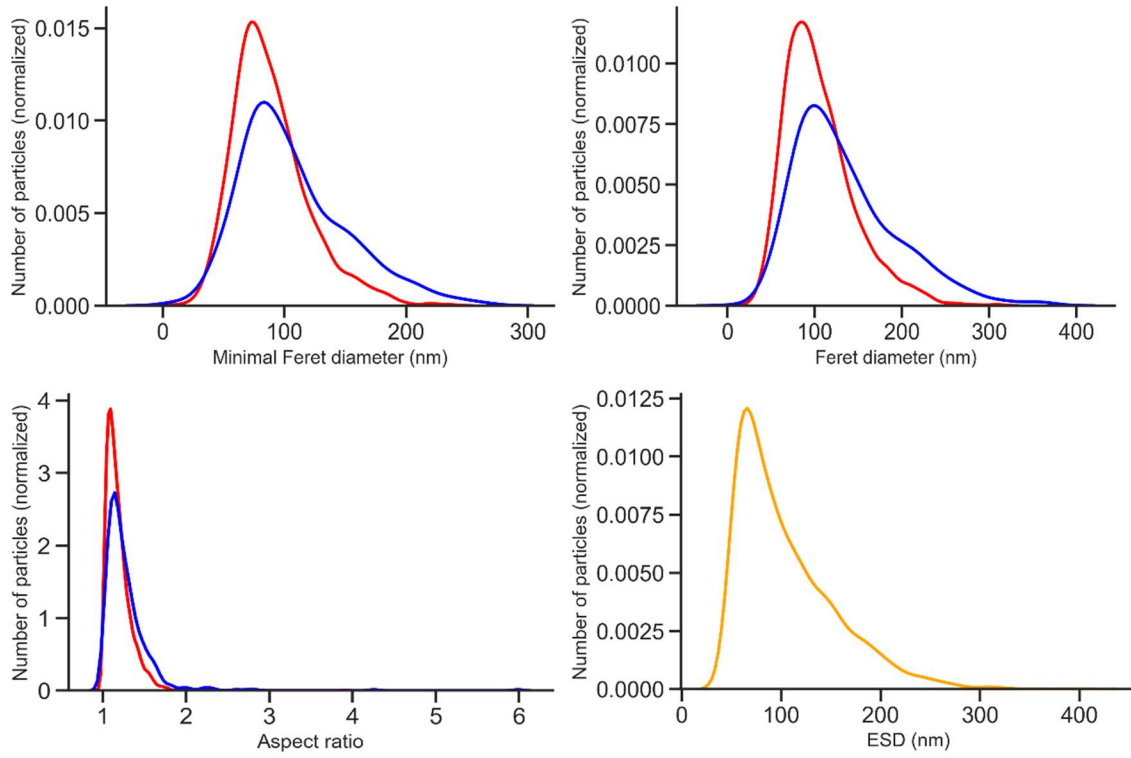
E171-09



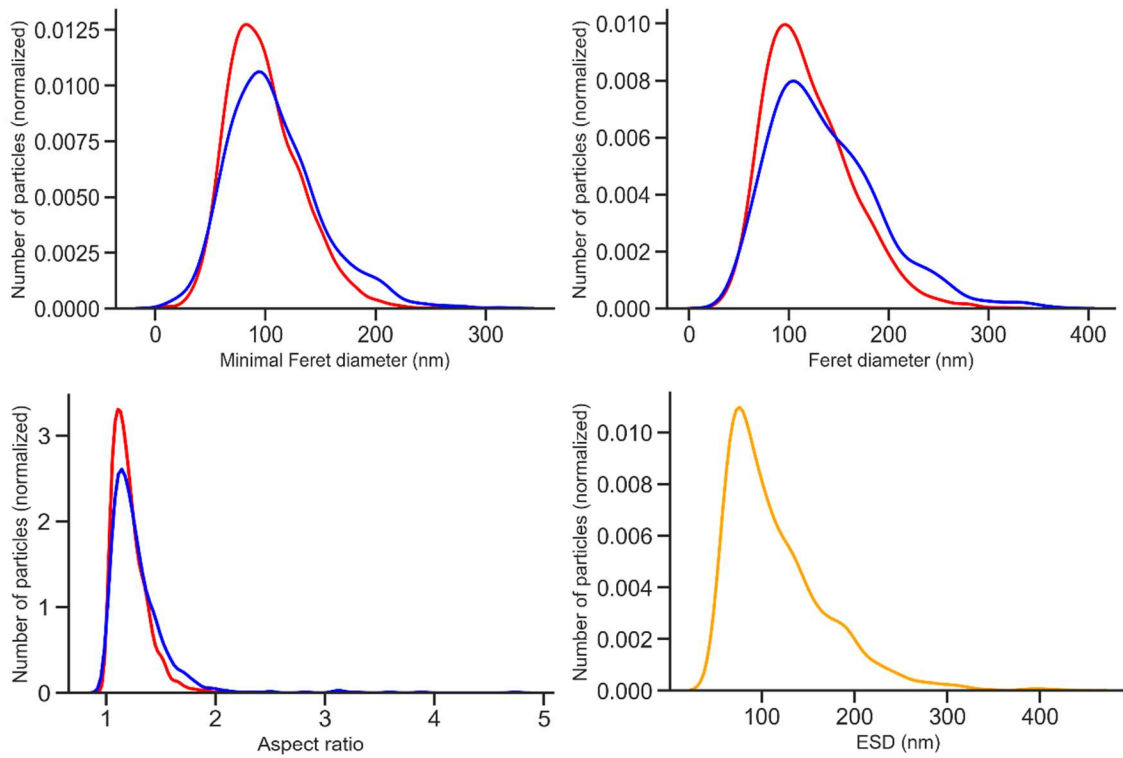
E171-A



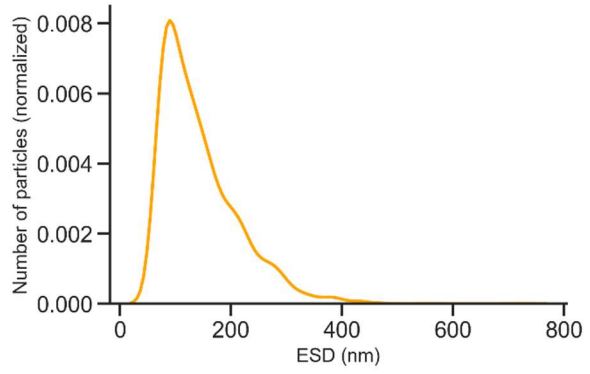
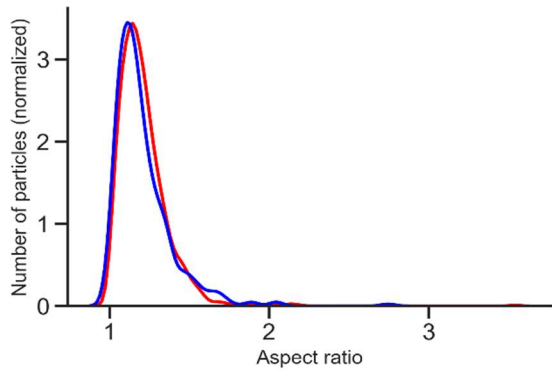
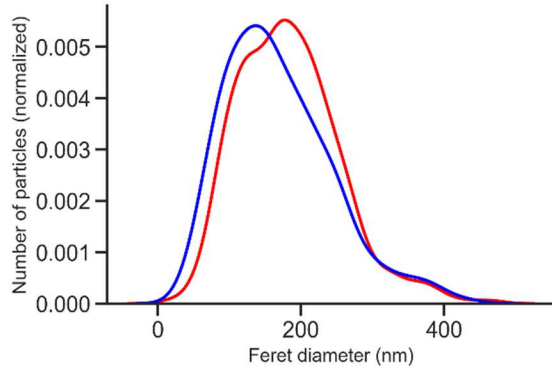
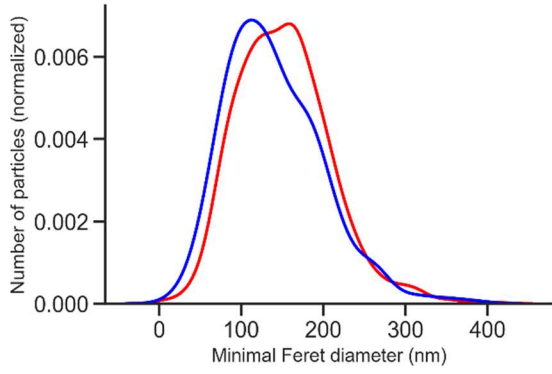
E171-B



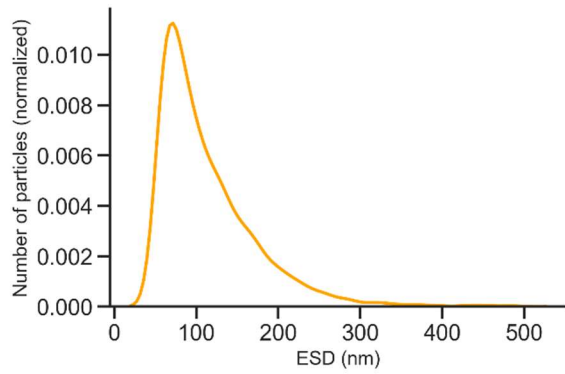
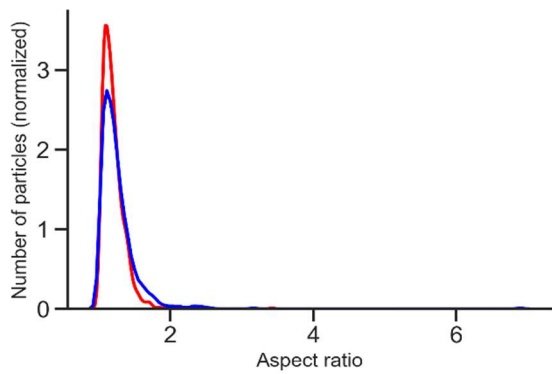
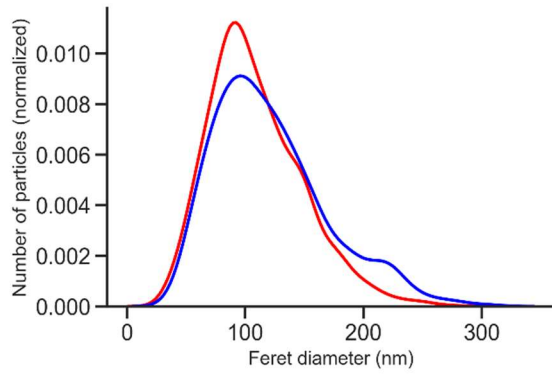
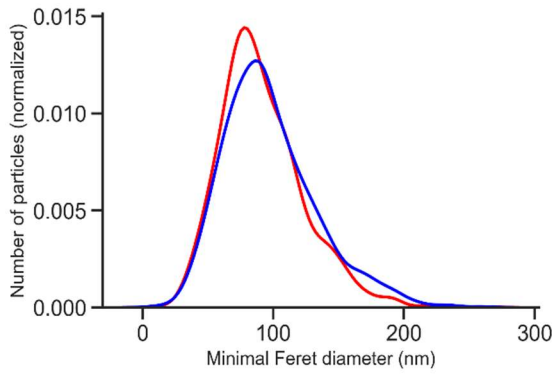
E171-C



E171-D



E171-E



E171-F

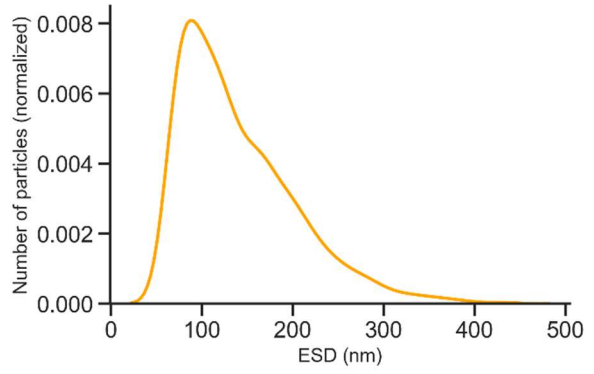
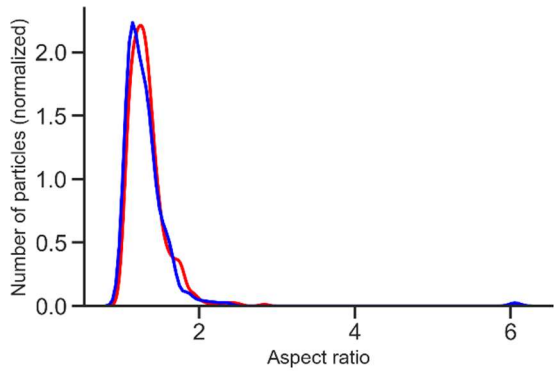
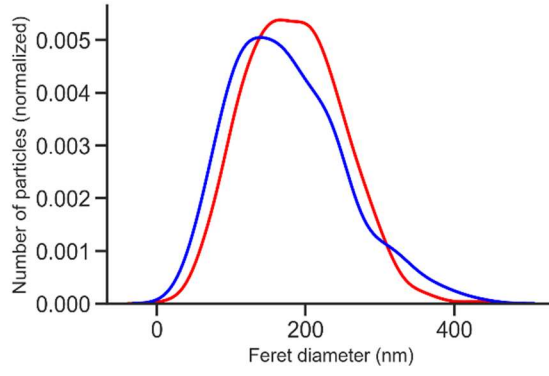
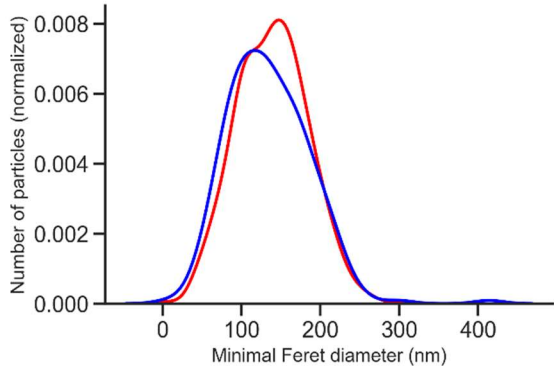


Table S1. Modes, 25 percentiles and 75 percentiles of the Fmin, Fmax and AR distributions for (a) constituent particles and (b) agglomerates of material E171-06.

| (a) Constituent particles | | | | | | | | |
|----------------------------------|------------------|-----------|-----------|-----------|-----------|-----------|------------------|------------------|
| Protocol | | P1 | P2 | P3 | P4 | P5 | P6, rep 1 | P6, rep 2 |
| Mode | Fmin (nm) | 82 | 85 | 89 | 86 | 82 | 83 | 81 |
| | Fmax (nm) | 92 | 108 | 106 | 96 | 97 | 95 | 89 |
| | AR | 1.135 | 1.165 | 1.163 | 1.098 | 1.123 | 1.102 | 1.090 |
| 25% | Fmin (nm) | 70 | 74 | 75 | 70 | 72 | 70 | 68 |
| | Fmax (nm) | 81 | 93 | 92 | 80 | 85 | 81 | 78 |
| | AR | 1.090 | 1.131 | 1.122 | 1.085 | 1.100 | 1.086 | 1.081 |
| 75% | Fmin (nm) | 111 | 127 | 128 | 113 | 114 | 110 | 106 |
| | Fmax (nm) | 137 | 157 | 159 | 136 | 141 | 134 | 128 |
| | AR | 1.286 | 1.362 | 1.335 | 1.273 | 1.309 | 1.265 | 1.236 |

| (b) Agglomerates | | | | | | | | |
|-------------------------|------------------|-----------|-----------|-----------|-----------|-----------|------------------|------------------|
| Protocol | | P1 | P2 | P3 | P4 | P5 | P6, rep 1 | P6, rep 2 |
| Mode | Fmin (nm) | 86 | 207 | 208 | 92 | 126 | 89 | 81 |
| | Fmax (nm) | 102 | 291 | 302 | 93 | 193 | 95 | 89 |
| | AR | 1.073 | 1.310 | 1.259 | 1.069 | 1.156 | 1.071 | 1.070 |
| 25% | Fmin (nm) | 72 | 162 | 175 | 73 | 101 | 81 | 73 |
| | Fmax (nm) | 87 | 219 | 244 | 87 | 138 | 98 | 85 |
| | AR | 1.040 | 1.189 | 1.171 | 1.053 | 1.098 | 1.066 | 1.051 |
| 75% | Fmin (nm) | 147 | 424 | 300 | 159 | 223 | 160 | 134 |
| | Fmax (nm) | 228 | 675 | 454 | 245 | 329 | 235 | 194 |
| | AR | 1.464 | 1.675 | 1.641 | 1.558 | 1.619 | 1.533 | 1.453 |