

Supporting information

mGluR5 Contribution to Neuropathology in Alzheimer Mice Is Disease Stage-Dependent

Khaled S. Abd-Elrahman^{1,2,3#}, Alison Hamilton^{1,2,#}, Awatif Albaker^{1,2,4} and Stephen S. G. Ferguson^{1,2,*}

University of Ottawa Brain and Mind Institute¹, Department of Cellular and Molecular Medicine², University of Ottawa, 451 Smyth Road, Ottawa, Ontario, K1H 8M5, Canada.

Department of Pharmacology and Toxicology³, Faculty of Pharmacy, Alexandria University, Alexandria, 21521, Egypt.

Department of Pharmacology and Toxicology⁴, College of Pharmacy, King Saud University, Riyadh, 12371, Saudi Arabia.

#Co-first authors

*Corresponding author

Table of content

Figure S-1 (A-H): Uncropped blots corresponding to Fig. 3D, 4A-D and 5A-C.

Figure S-1 (I): mGluR5 expression in wild-type and APP^{swe}/PS1 Δ E9 mice

Figure S-1

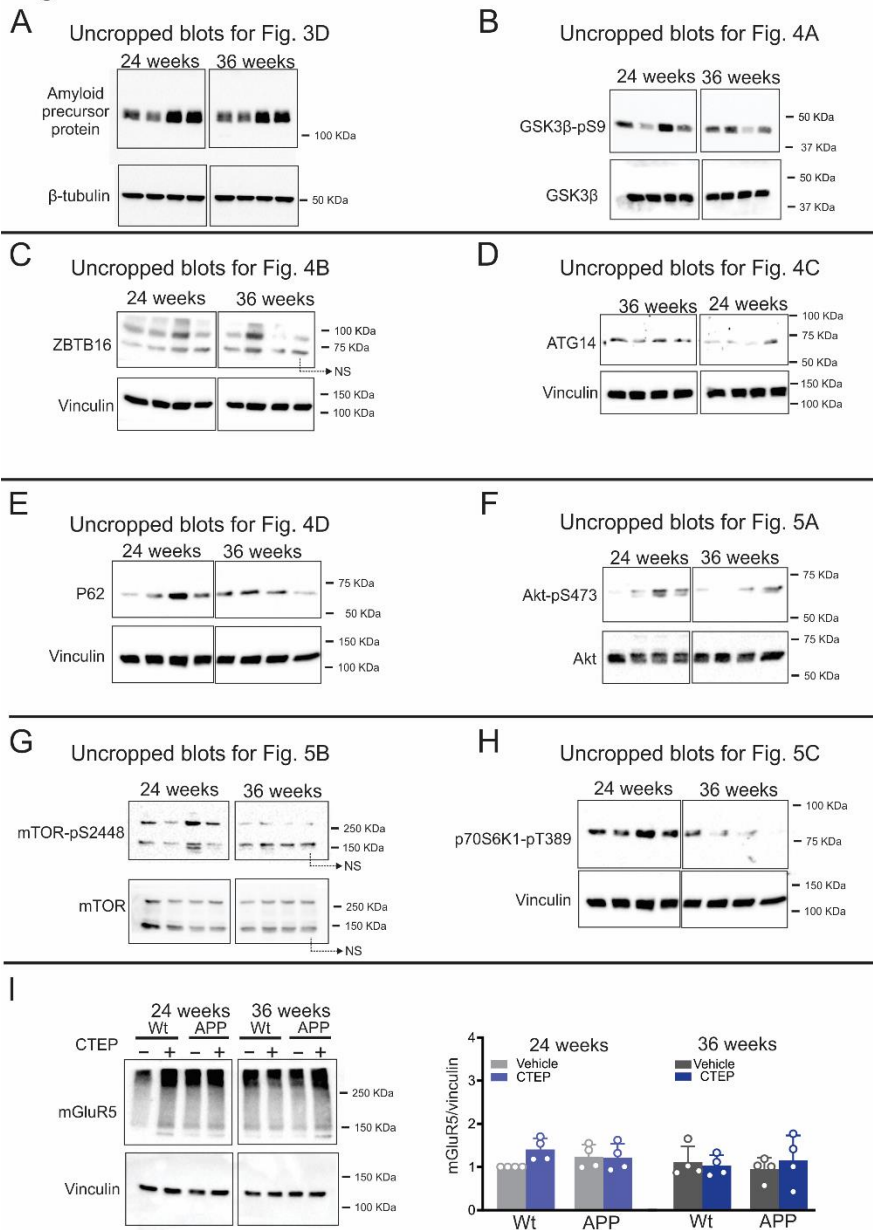


Figure S-1: Uncropped blots corresponding to **(A)** Fig. 3D **(B)** Fig. 4A, **(C)** Fig. 4B, **(D)** Fig. 4C, **(E)** Fig. 4D, **(F)** Fig. 5A, **(G)** Fig. 5B and **(H)** Fig 5C with the corresponding molecular weight markers. NS denotes non-specific bands. **(I)** Uncropped representative western blots and mean \pm SD of mGluR5 total expression in brain lysates from age-matched wildtype (Wt) and APP^{swe}/PS1 Δ E9 (APP) mice after either a 24 week or 36 week treatment with either vehicle or CTEP (2mg/Kg). Values were expressed as a fraction of 24 week, vehicle-treated Wt values. Total mGluR5 expression was normalized to vinculin (n=4 for each group).