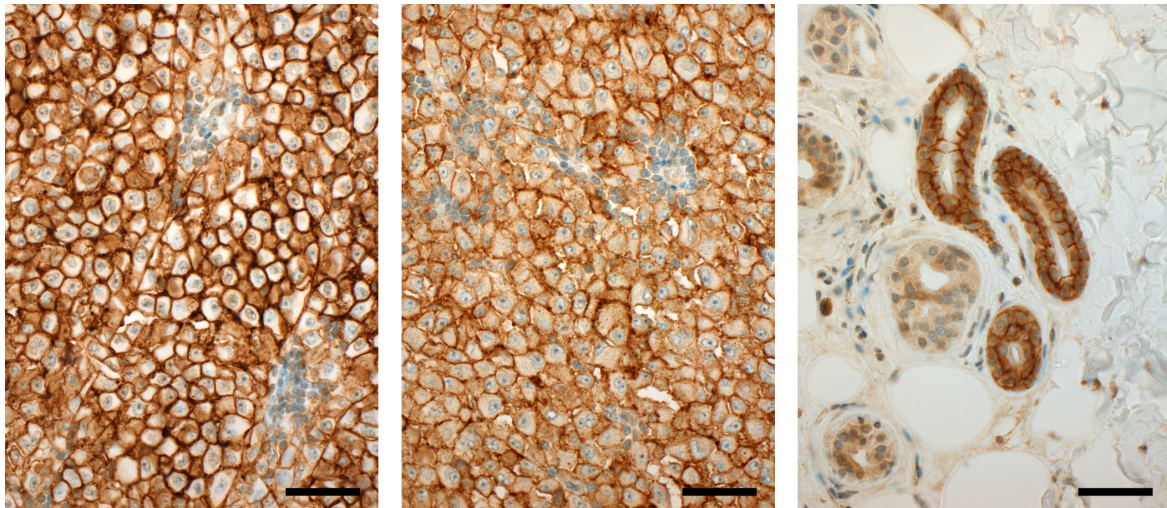


**Supplementary Figure 1.**



A: MCT1 (tumour)

B: MCT4 (tumour)

C: MCT4 (normal tissue)

Immunohistochemical staining of the patient's pre-treatment melanoma (A, B) and normal tissue (C) for MCT1 (A) and MCT4 (B, C), showing strong expression of MCT1 and MCT4 by the tumour and strong expression of MCT4 by an eccrine gland. Immunohistochemical staining was performed on the Ventana Benchmark automated staining platform using rabbit monoclonal antibodies specific for MCT1 and MCT4 raised against peptides CPDQKDTEGGPKEEESPV and CEPEKNGEVVHTPETSU respectively (supplied by AstraZeneca, Cambridge UK)<sup>1</sup>. Scale bar = 50µm.

1. Polanski R, Hodgkinson CL, Fusi A, Nonaka D, Priest L, Kelly P *et al*. Activity of the monocarboxylate transporter 1 inhibitor AZD3965 in small cell lung cancer. *Clin Cancer Res.* 2014;20(4):926-937.