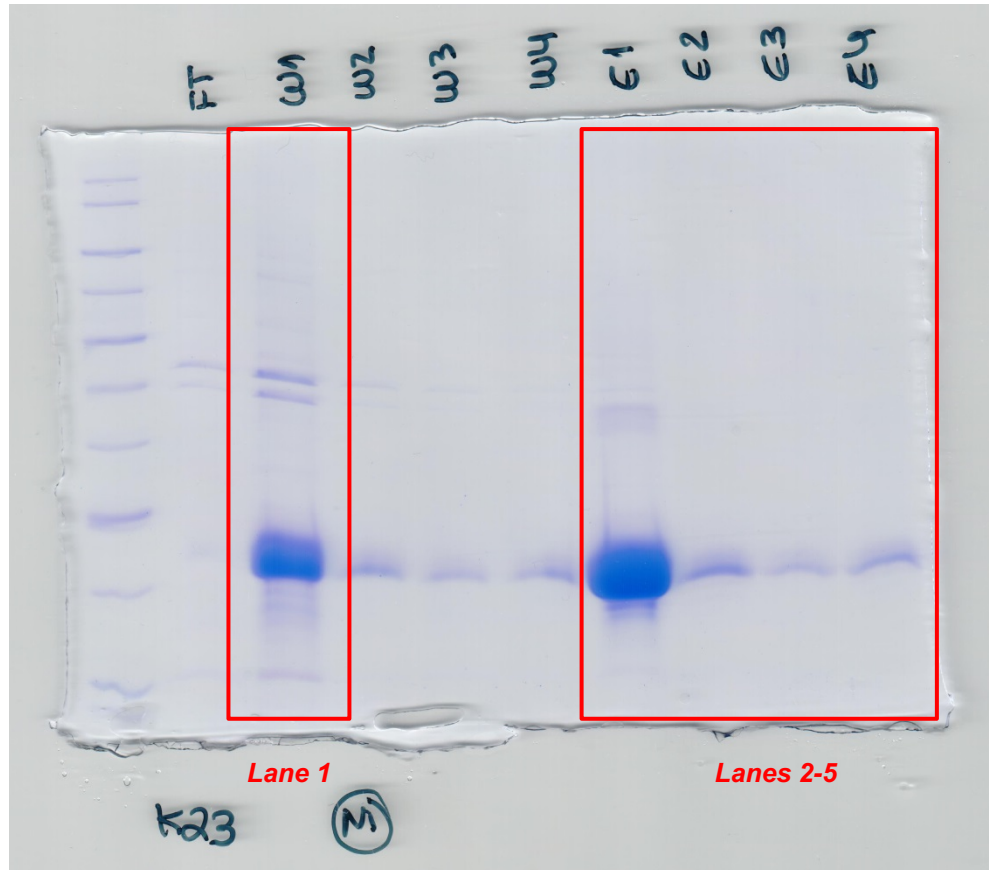


# Analysis of the inhibiting activity of reversion-inducing cysteine-rich protein with Kazal motifs (RECK) on matrix metalloproteinases

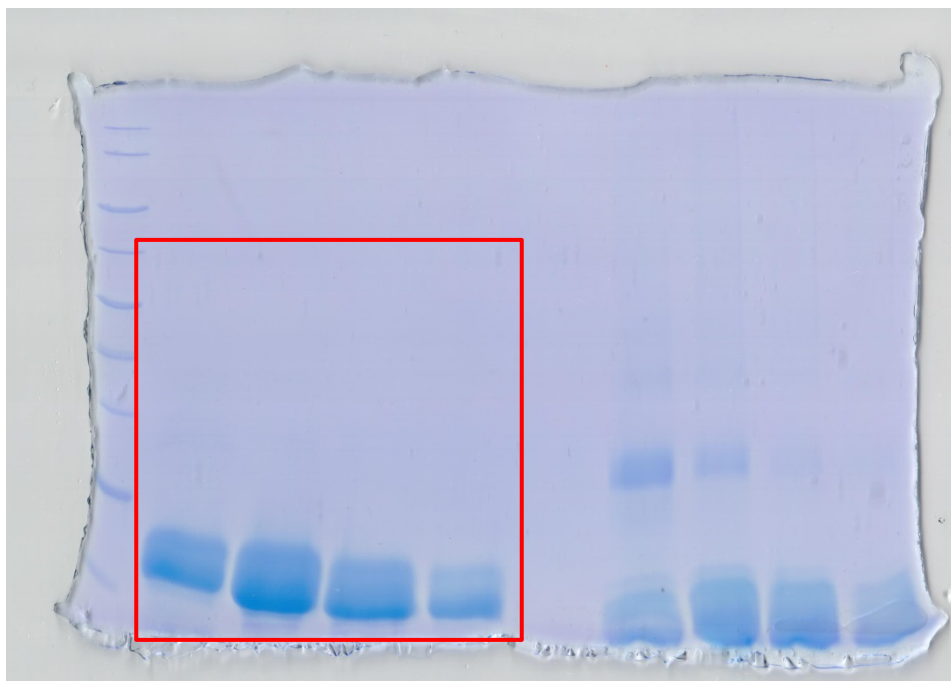
Soraia R. Mendes, Laura del Amo-Maestro, Laura Marino-Puertas, Iñaki de Diego, Theodoros Goulas & F. Xavier Gomis-Rüth

Original Gels for Figures

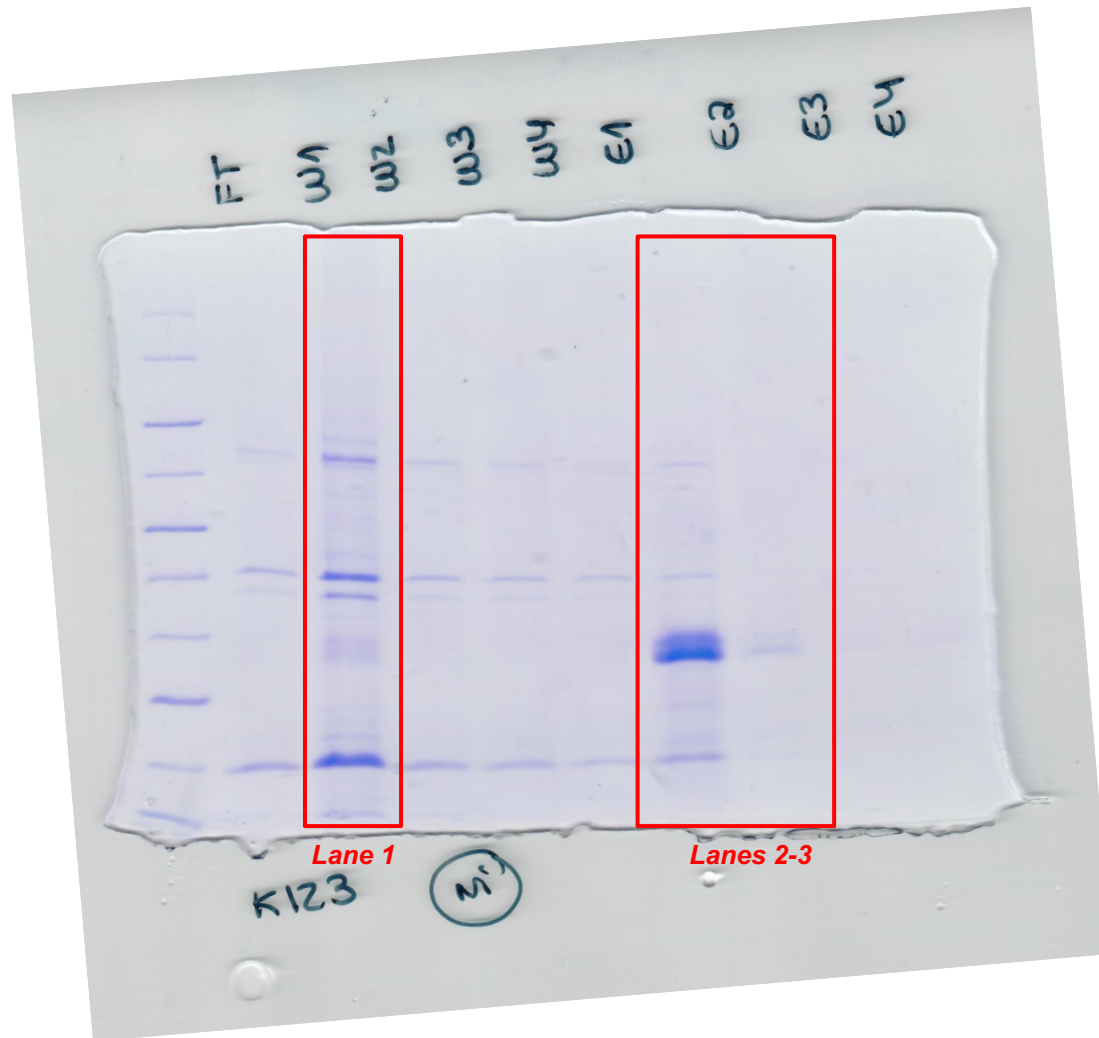
# Figure 2A



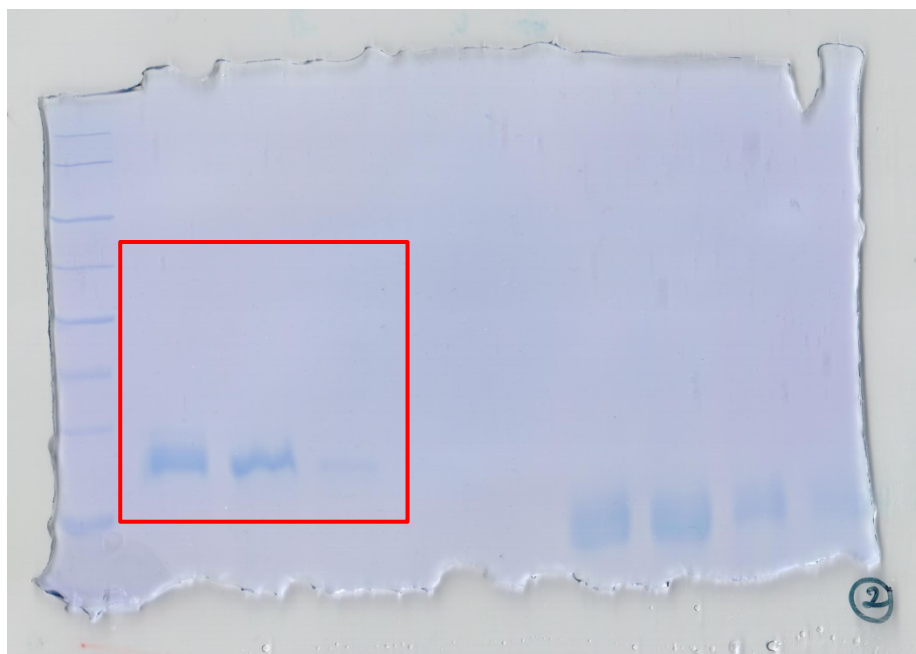
# Figure 2B



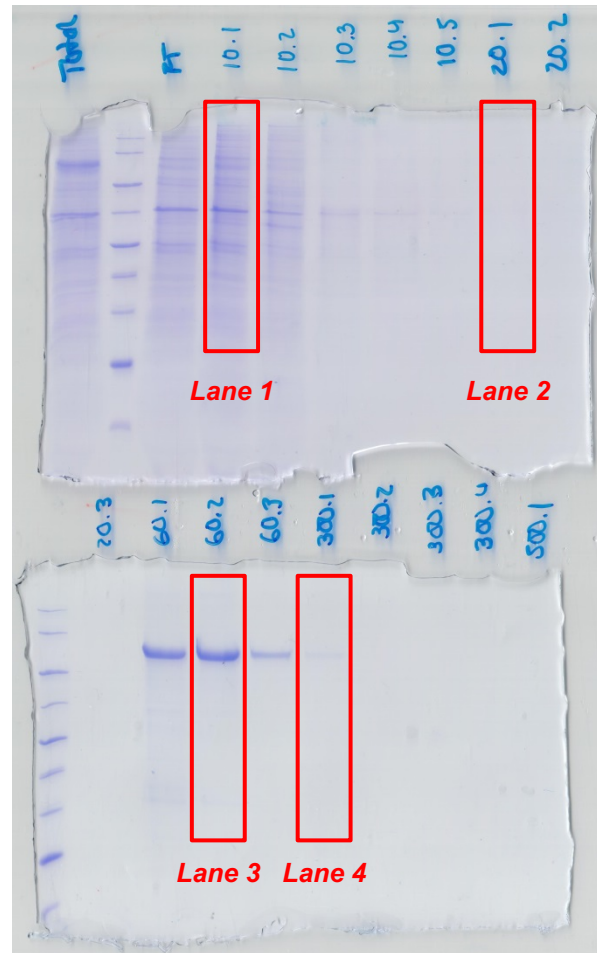
# Figure 2C



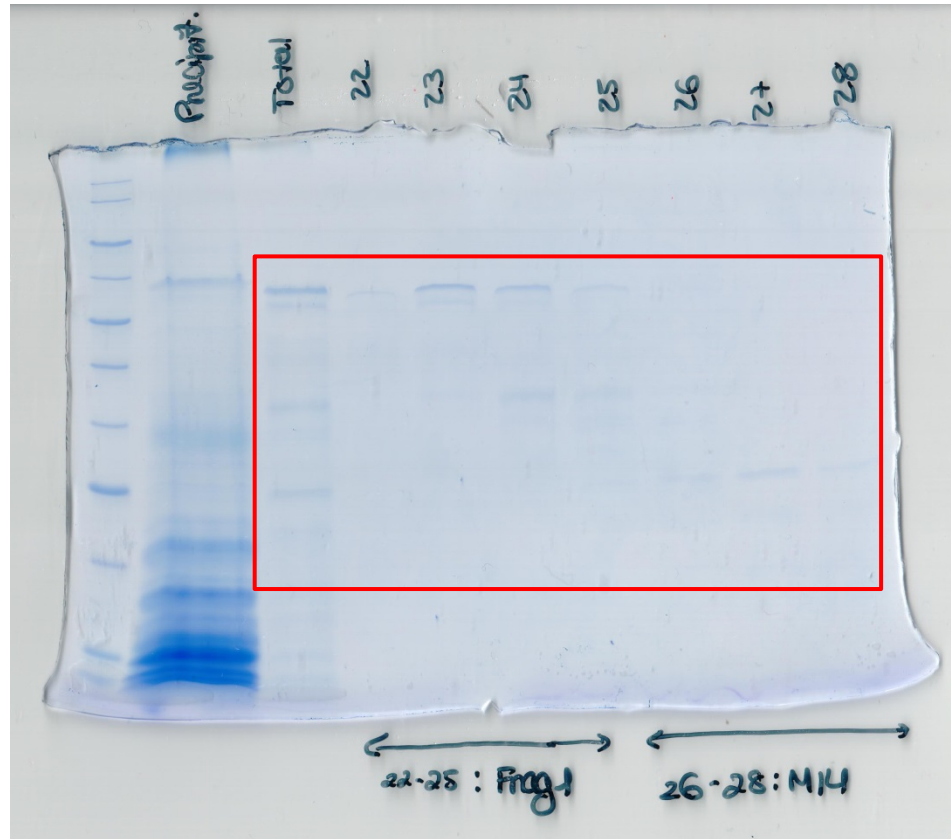
# Figure 2D



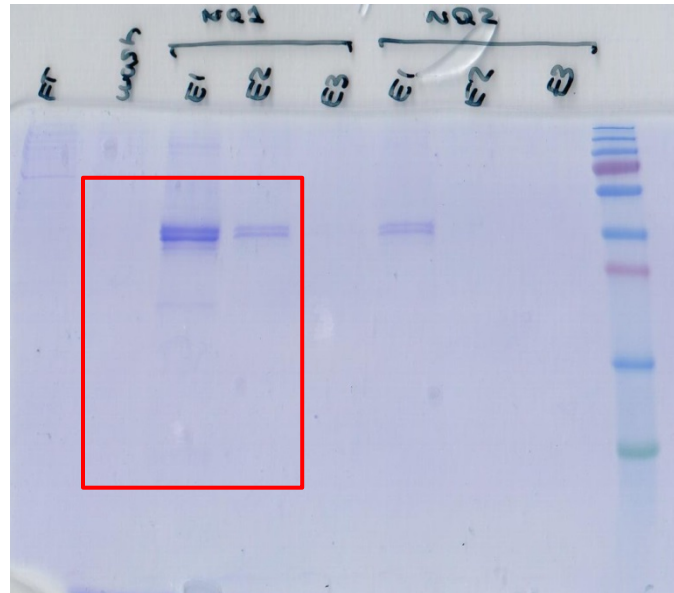
# Figure 2E



# Figure 2G

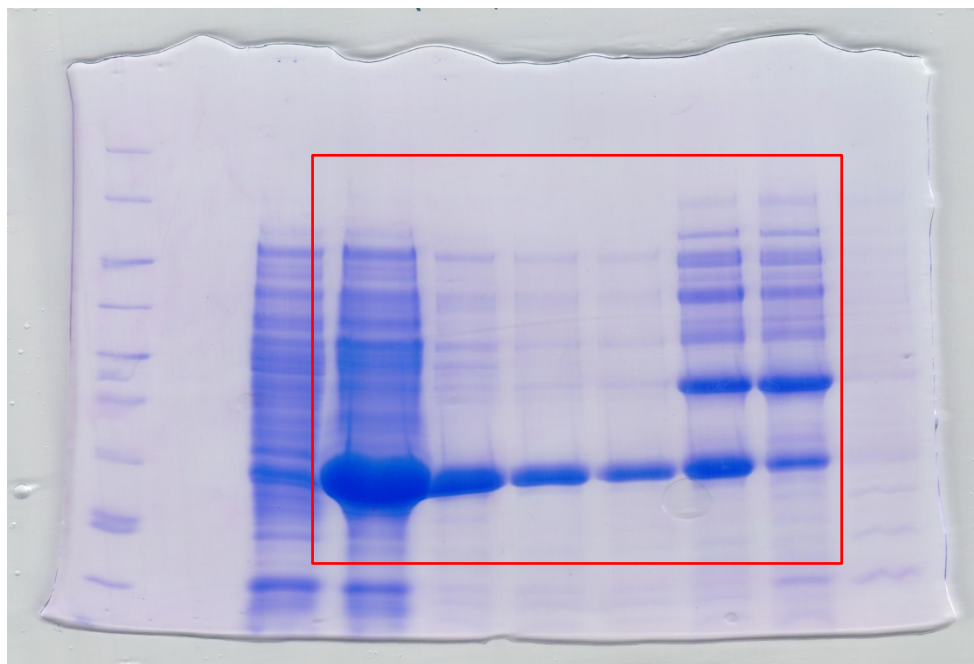


# Figure 2H

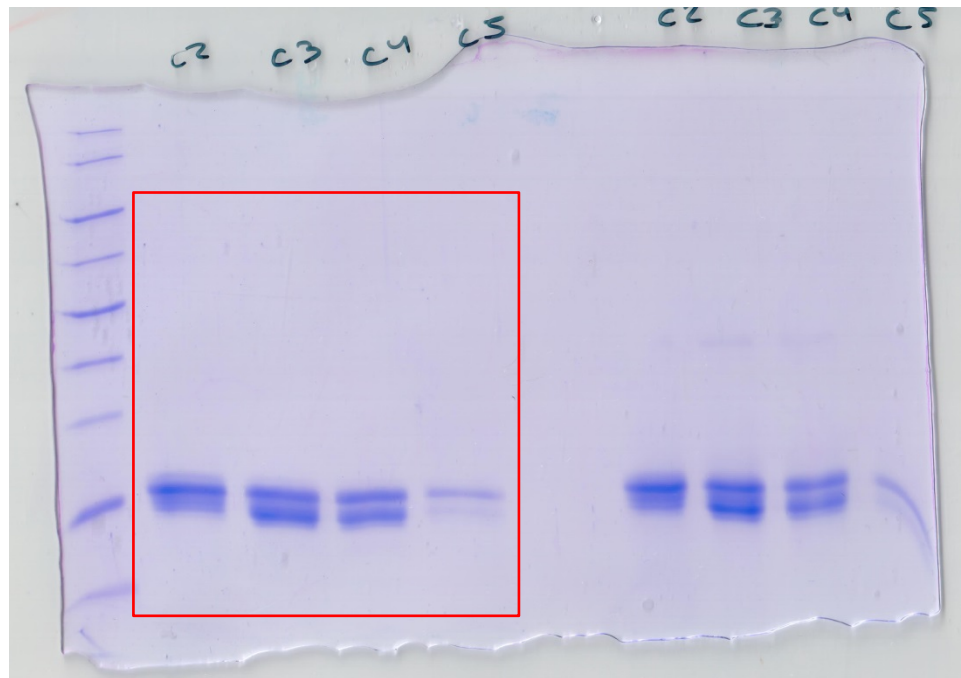




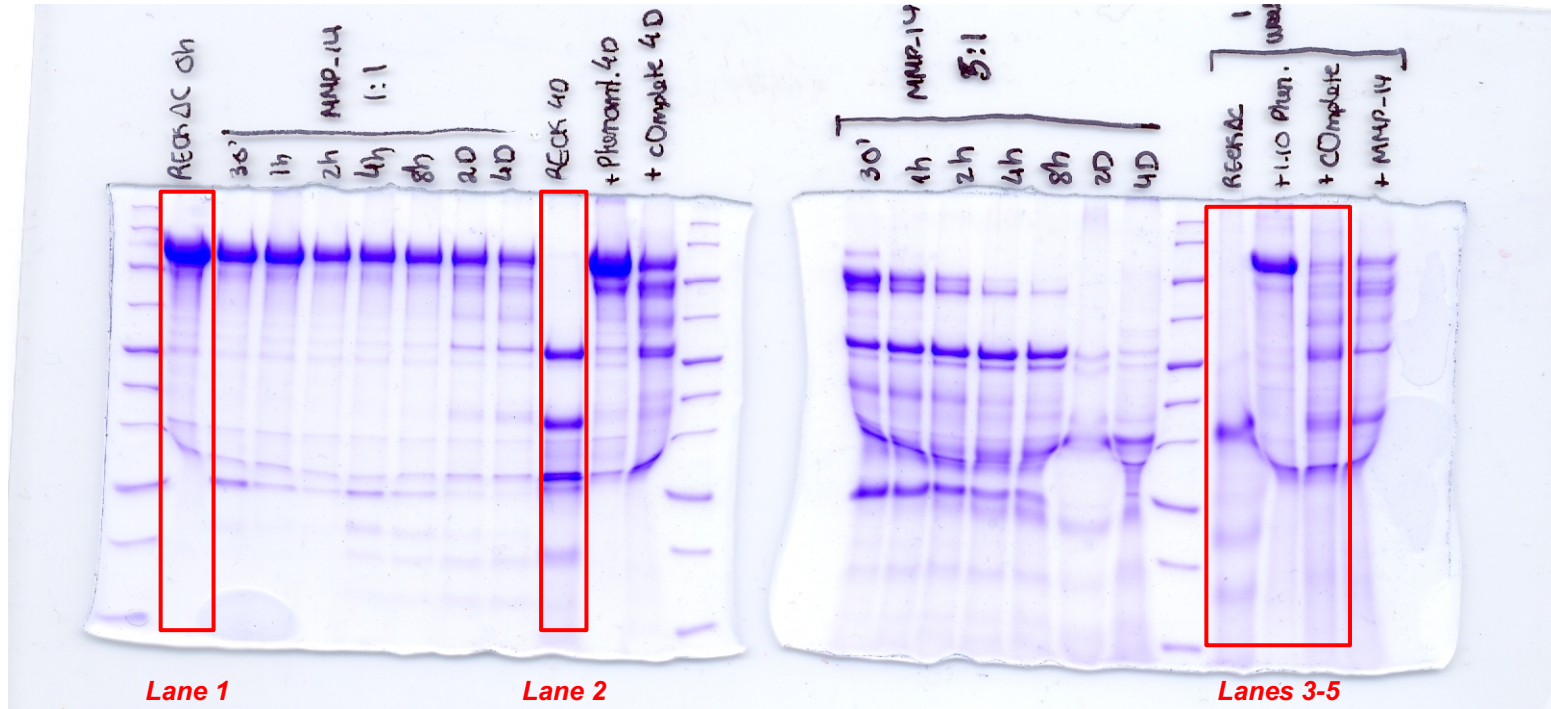
# Figure 2I



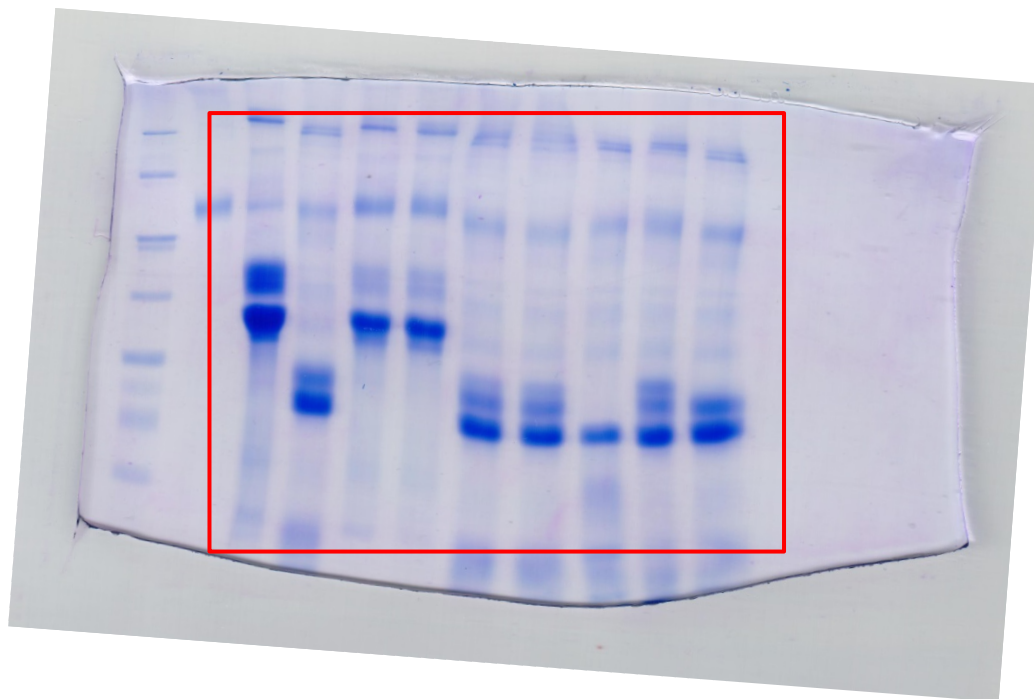
# Figure 2J



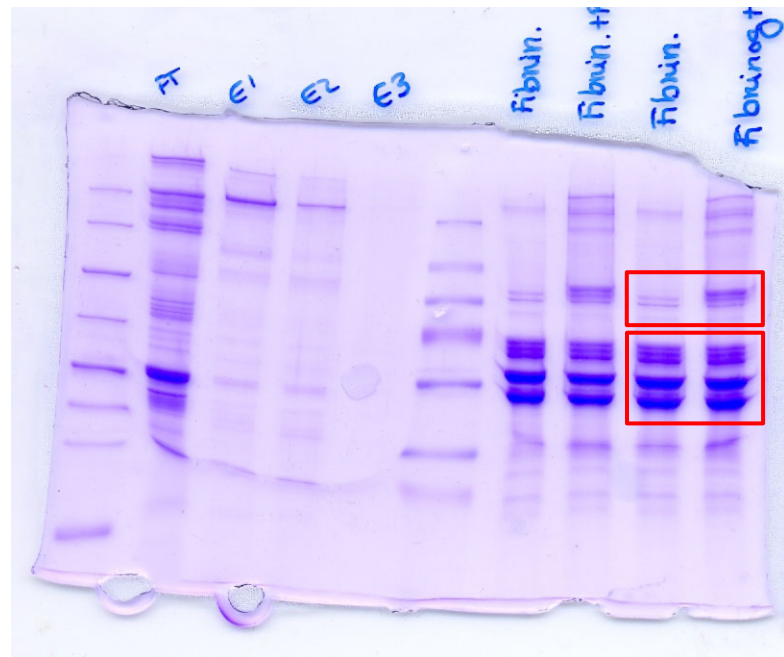
# Figure 3A



# Figure 3B



# Figure 3C

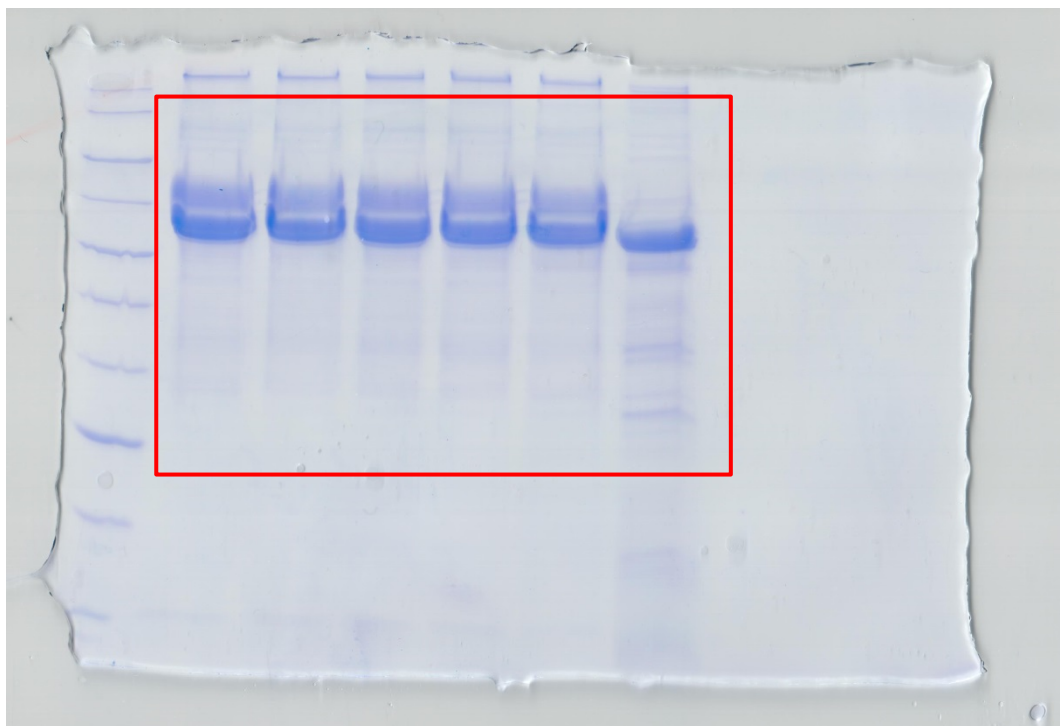


*Top part*

*Bottom part*

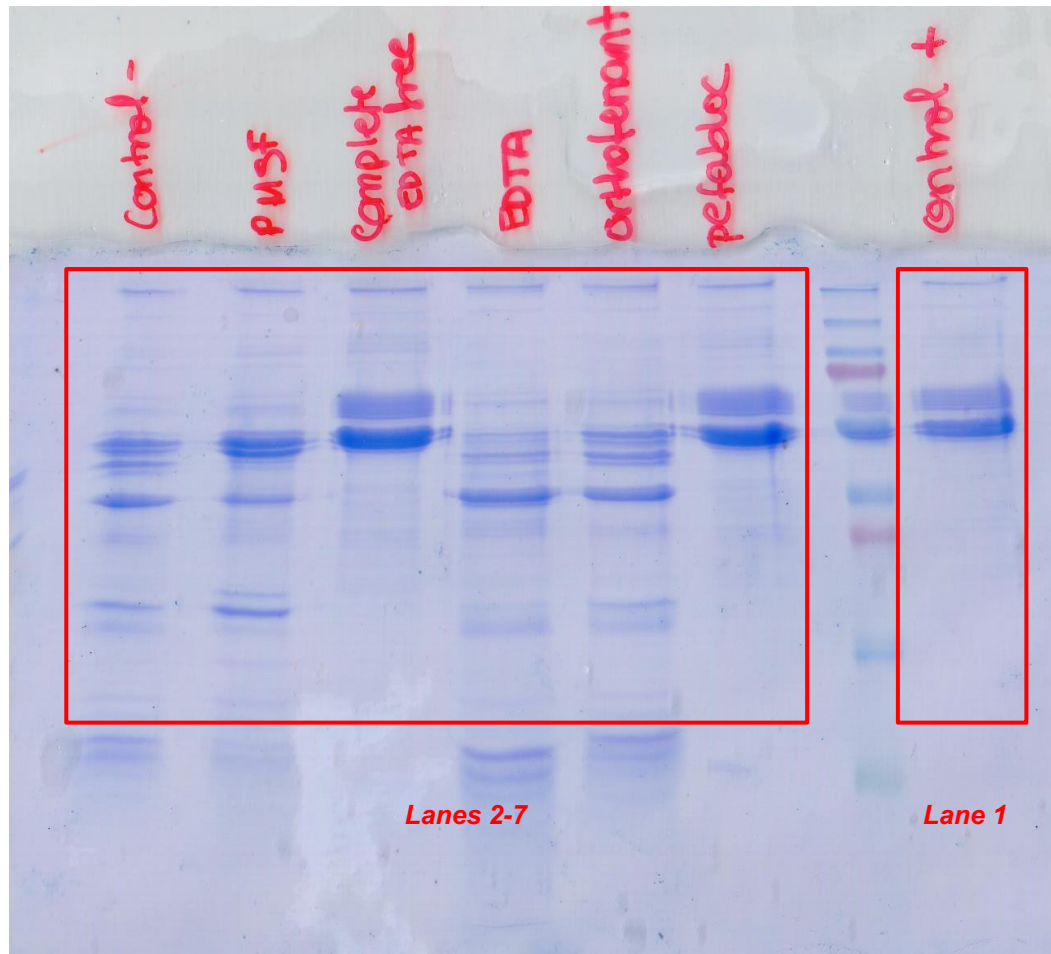


# Figure 3E



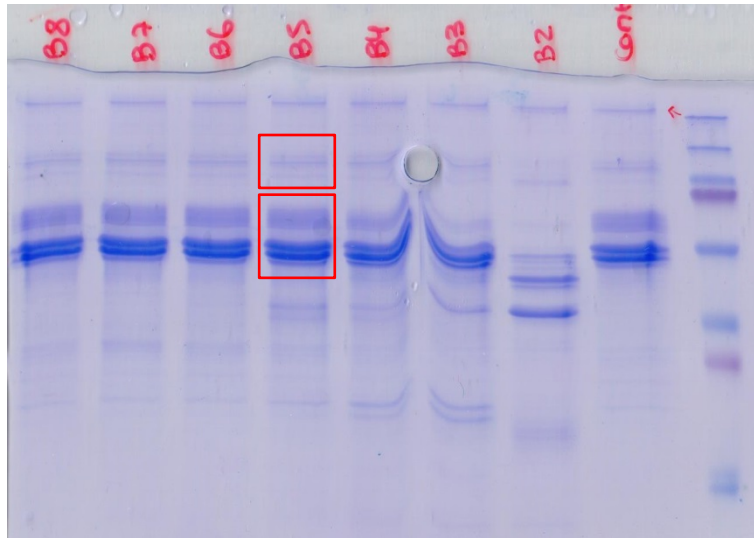


# Figure 3F

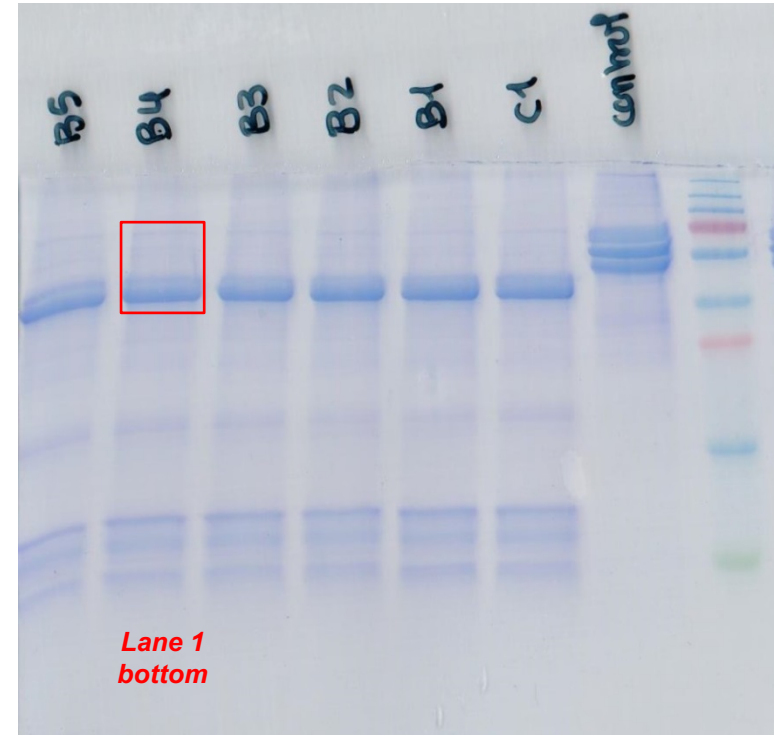




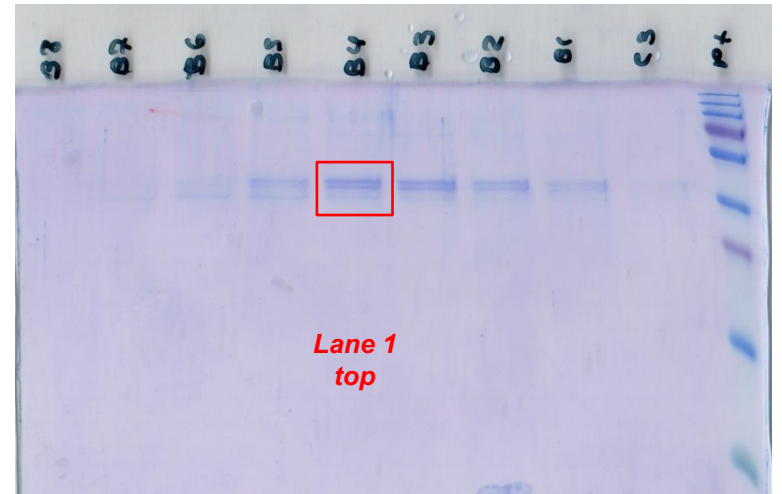
# Figure 3G



Lane 2

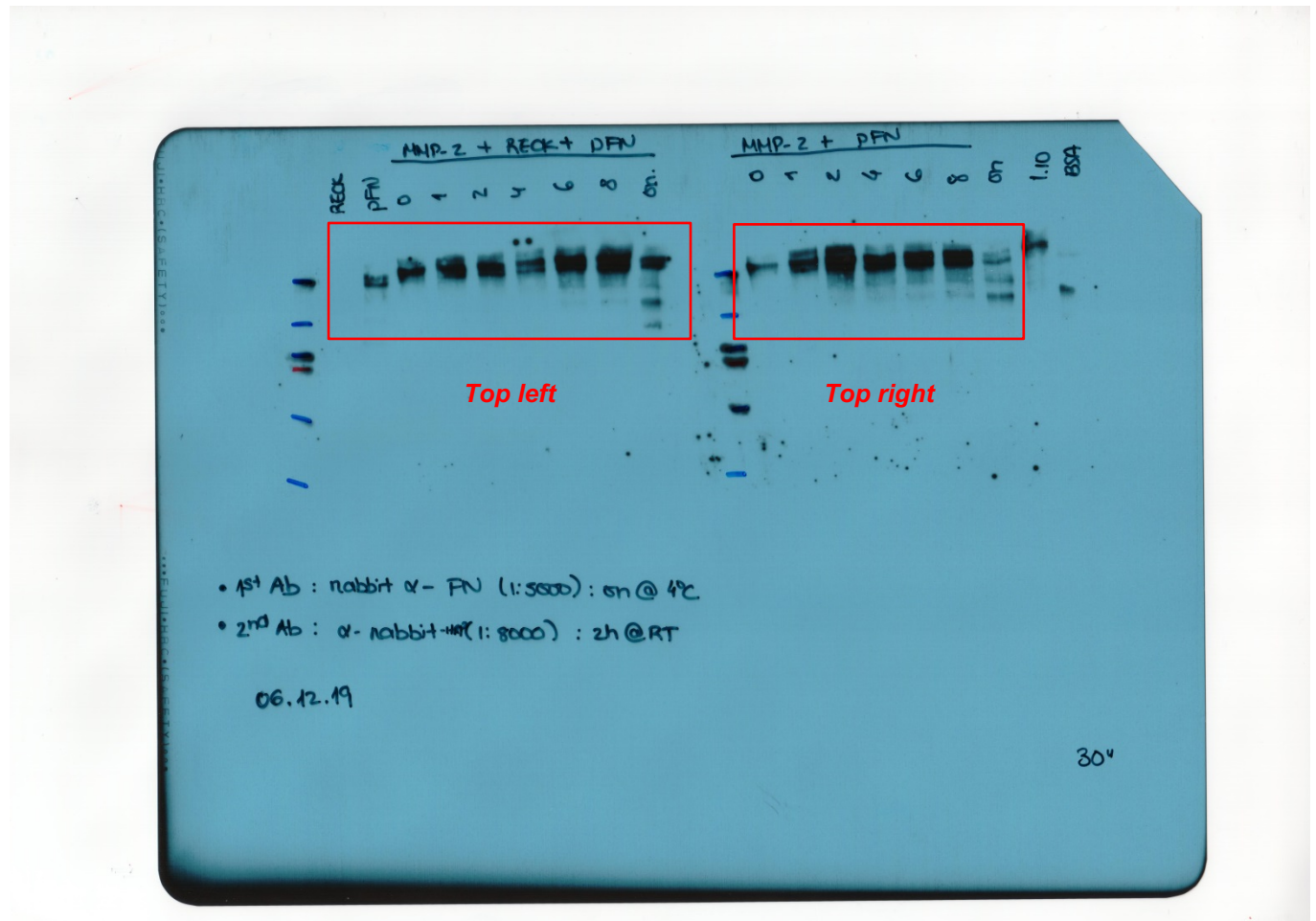


Lane 1  
bottom

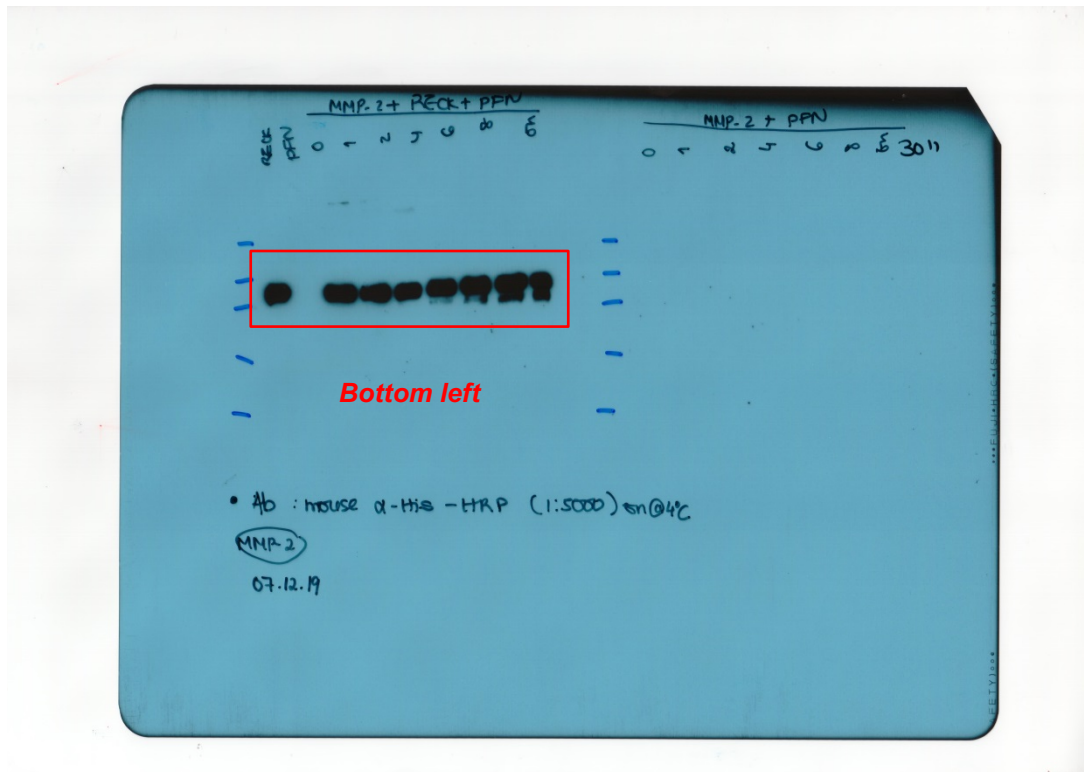


Lane 1  
top

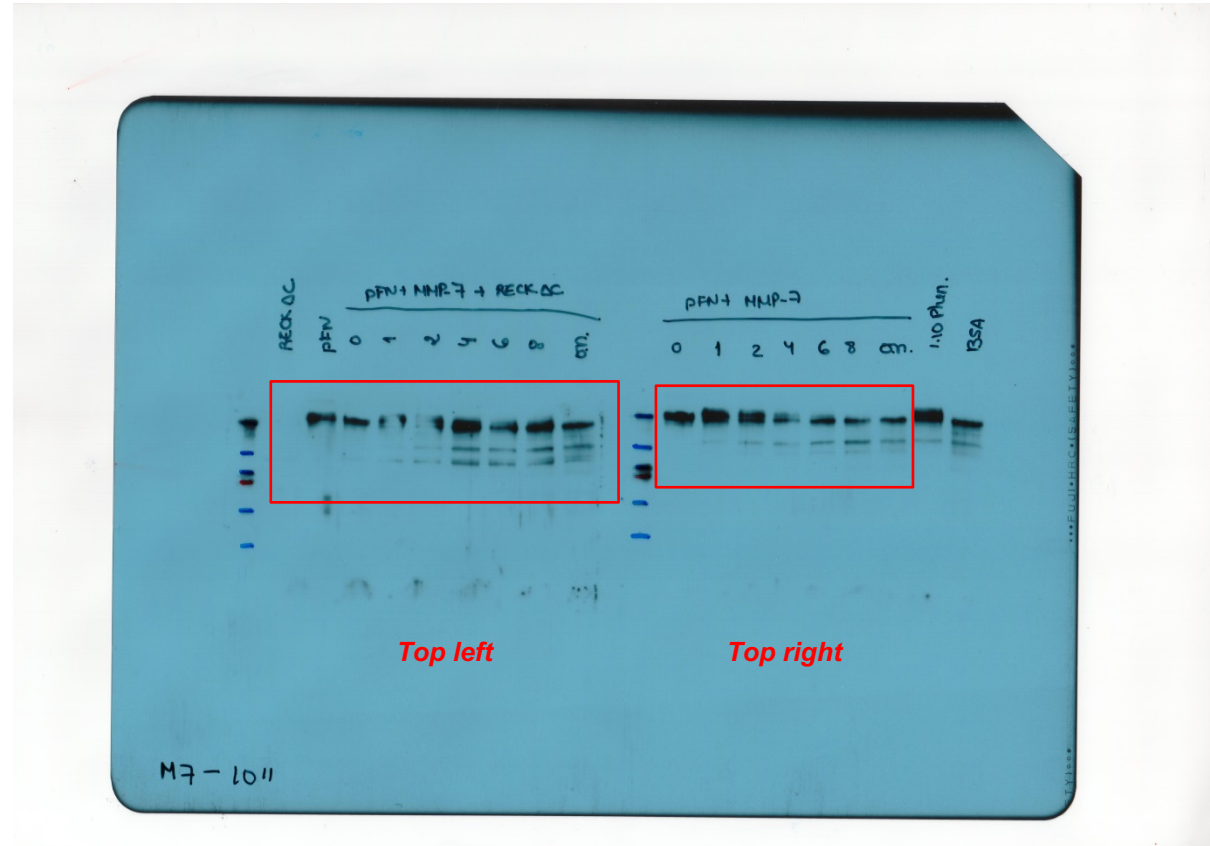
# Figure 5A



# Figure 5A



# Figure 5B



# Figure 5B

