

Supplementary material

Title

Survival of diffuse astrocytic glioma, *IDH1/2*-wildtype, with molecular features of glioblastoma, WHO grade IV: a confirmation of the cIMPACT-NOW.

Authors

C. Mircea S. Tesileanu, Linda Dirven, Maarten M.J. Wijnenga, Johan A.F. Koekkoek, Arnaud J.P.E. Vincent, Hendrikus J. Dubbink, Peggy N. Atmodimedjo, Johan M. Kros, Sjoerd G. van Duinen, Marion Smits, Martin J.B. Taphoorn, Pim J. French, Martin J. van den Bent

Journal

Neuro-Oncology

Corresponding author

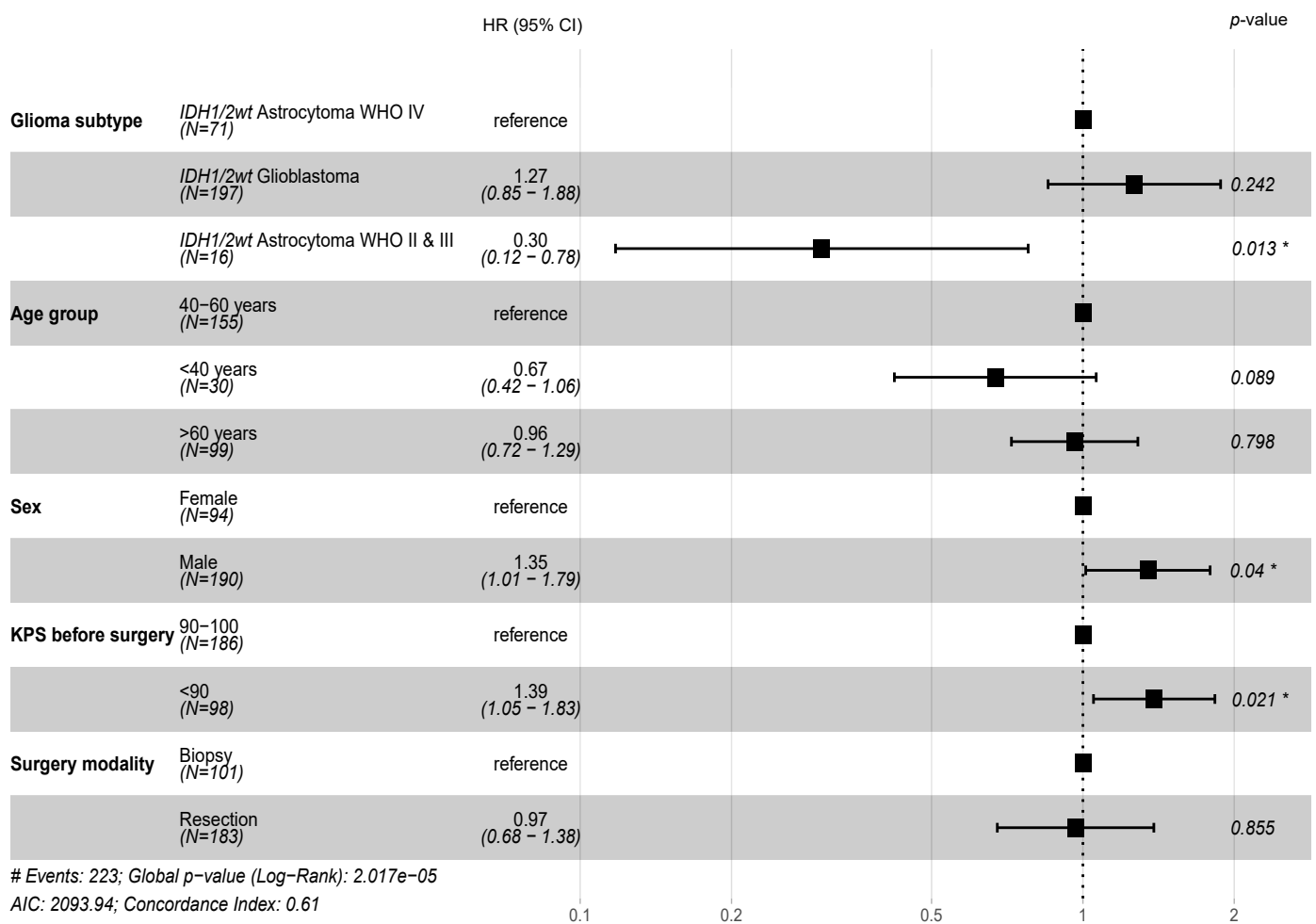
Name: Mircea Tesileanu

Email address: c.tesileanu@erasmusmc.nl

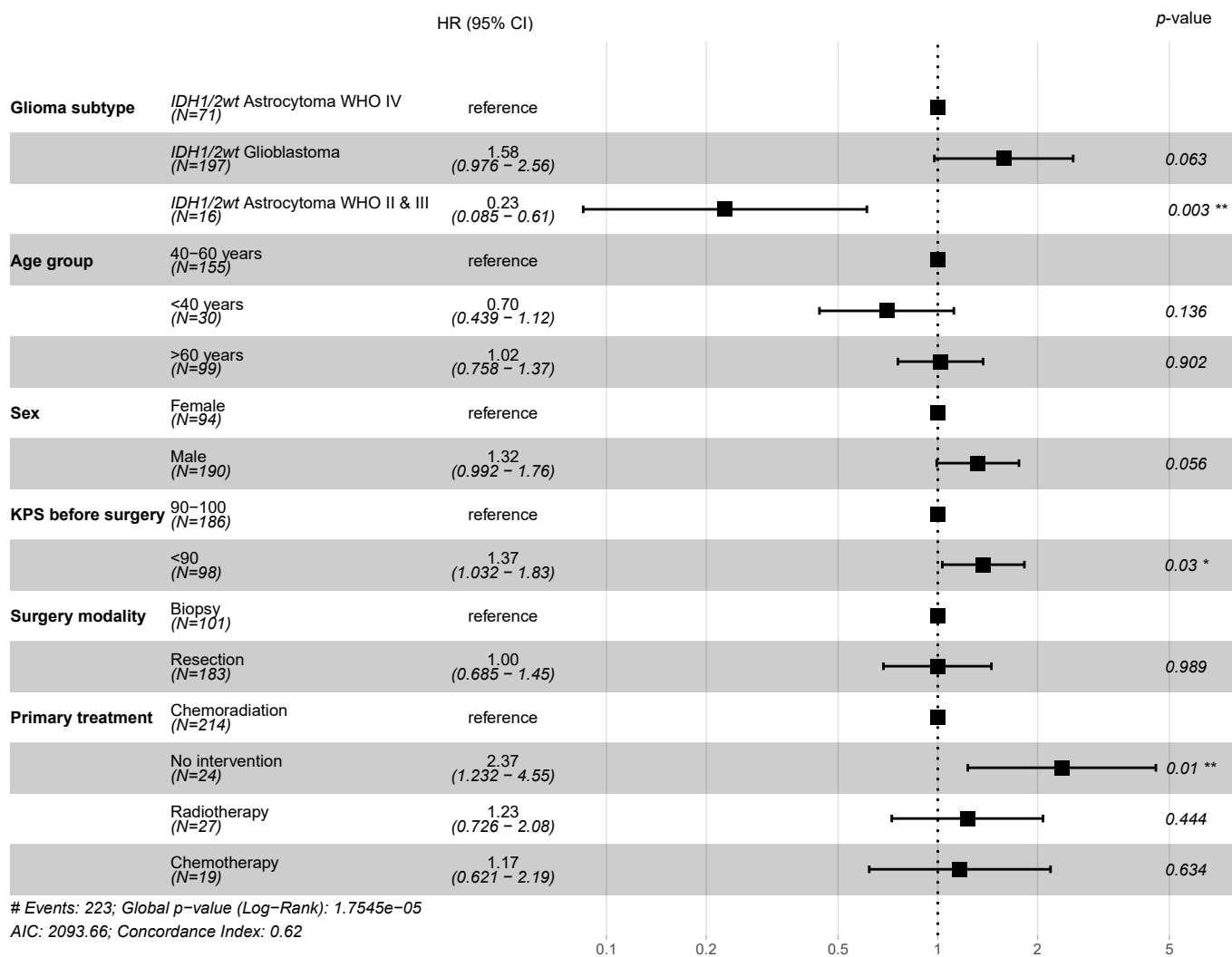
Affiliation: Department of Neurology, the Brain Tumor Center, Erasmus MC, University Medical Center, Rotterdam, the Netherlands

<i>Characteristics</i>	<i>HR</i>	<i>95% CI</i>	<i>p</i>
<i>Glioma subtype</i>			<0.001
<i>IDH1/2wt Astrocytoma WHO IV</i>	reference		
<i>IDH1/2wt Astrocytoma WHO II & III</i>	0.23	0.09-0.58	
<i>IDH1/2wt Glioblastoma</i>	1.19	0.87-1.63	
<i>Age</i>			0.070
<i>40-60 years</i>	reference		
<i><40 years</i>	0.62	0.39-0.97	
<i>>60 years</i>	1.02	0.77-1.36	
<i>Sex</i>			0.050
<i>Female</i>	reference		
<i>Male</i>	1.33	1.00-1.76	
<i>KPS before surgery</i>			0.002
<i>90-100</i>	reference		
<i>≤ 80</i>	1.54	1.17-2.02	
<i>Surgery modality</i>			0.500
<i>Biopsy</i>	reference		
<i>Resection</i>	1.10	0.83-1.46	

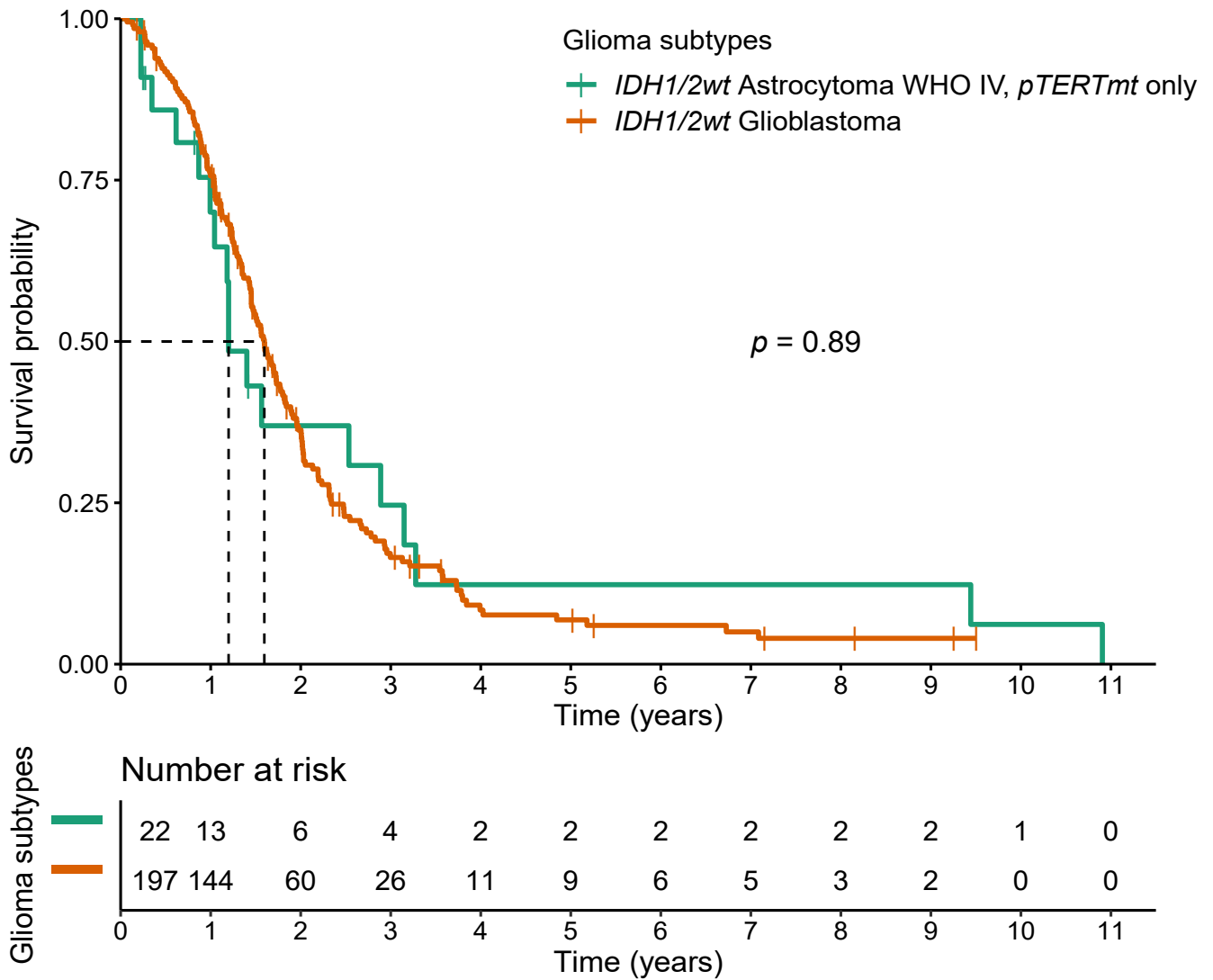
Supplementary Table 1 The univariate analysis of OS for all *IDH1/2wt* gliomas taking into account the known prognostic factors for gliomas. The *p*-values of the likelihood ratio test are listed comparing the HR to the reference.



Supplementary Figure 1 Forest plot with hazard ratios of the multivariable analysis of OS for all *IDH1/2wt* gliomas taking into account age, sex, KPS before surgery and surgery modality.



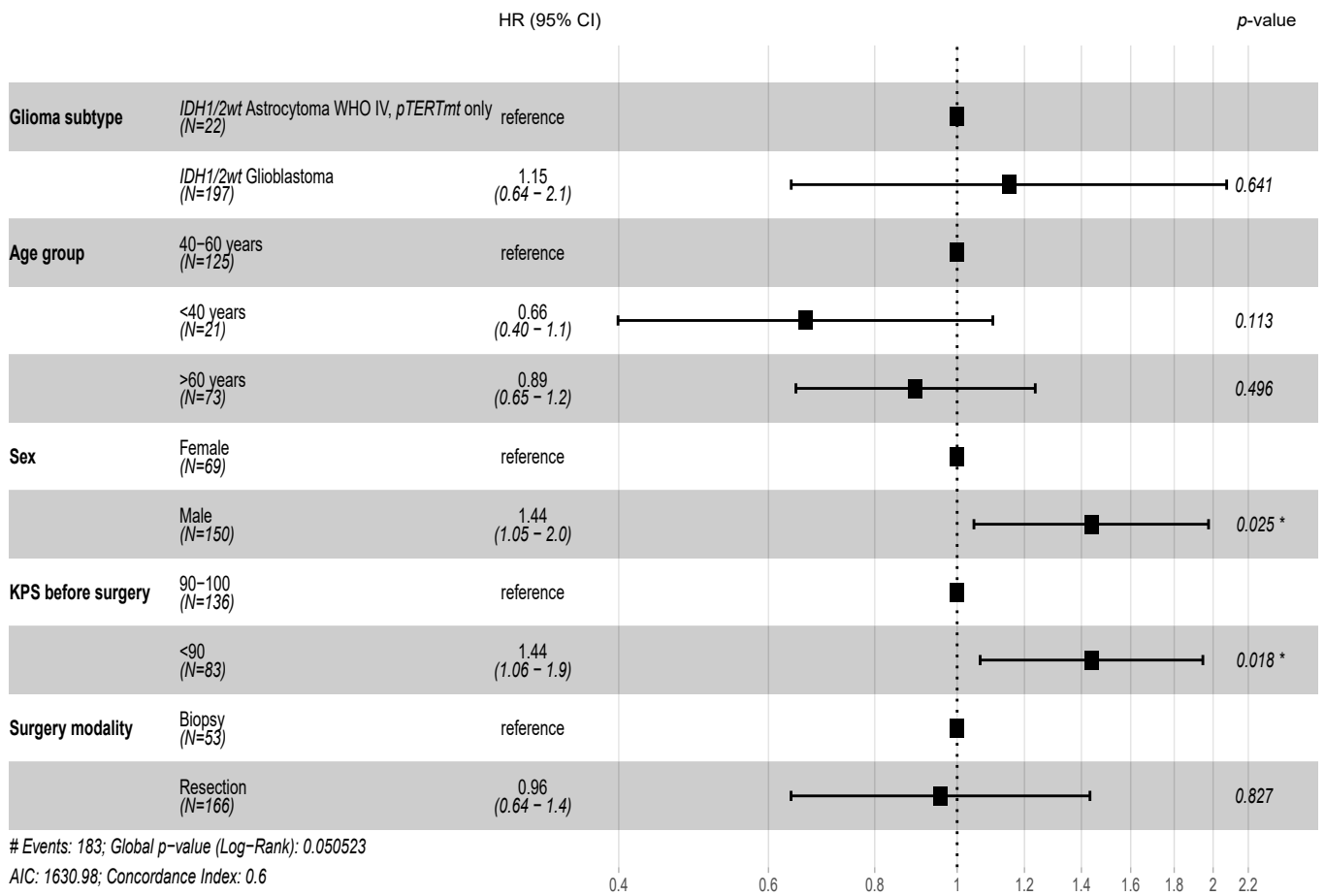
Supplementary Figure 2 Forest plot with hazard ratios of the multivariable analysis of OS for all *IDH1/2wt* gliomas taking into account age, sex, KPS before surgery, surgery modality and primary treatment after surgery.



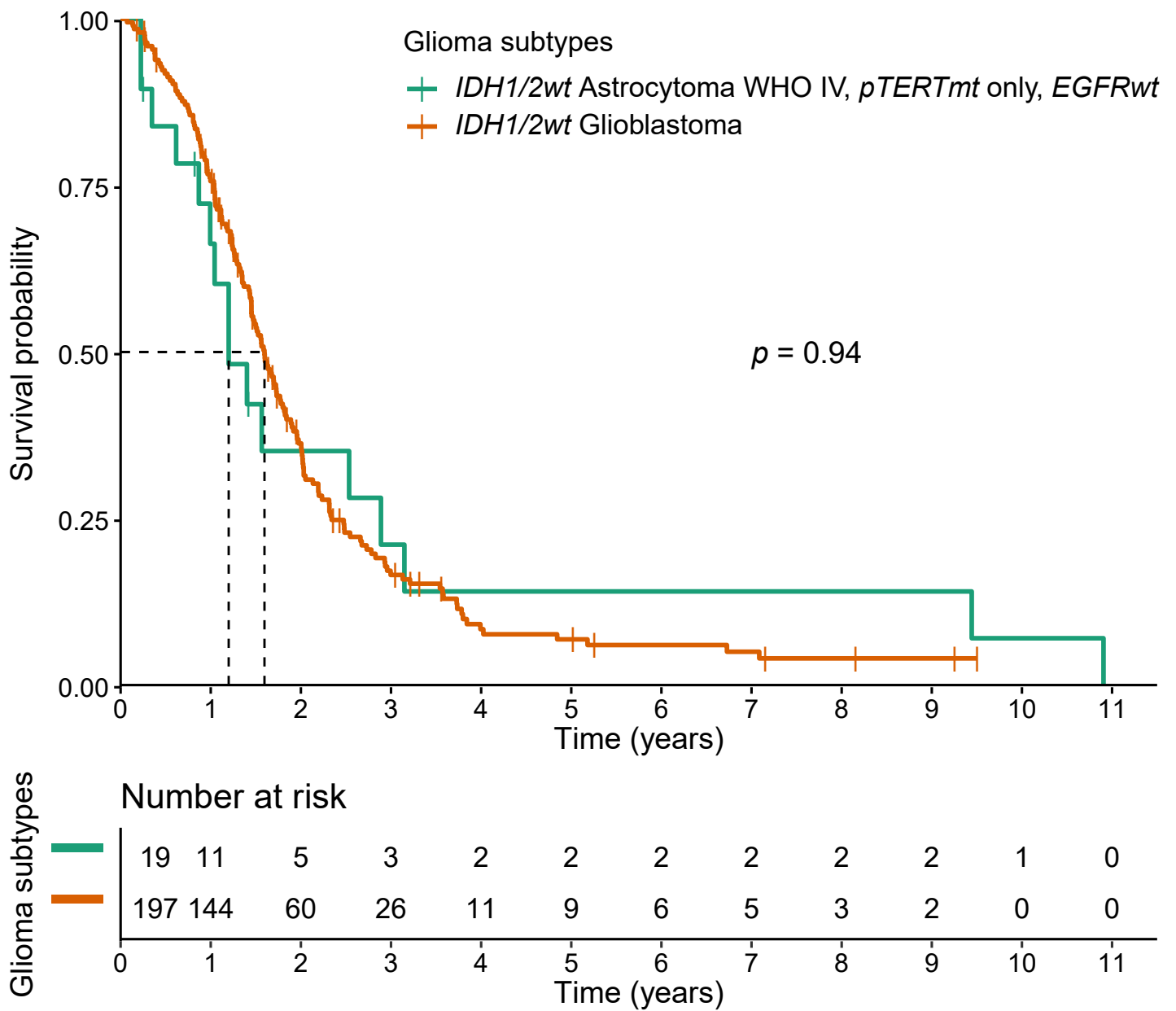
Supplementary Figure 3 Kaplan-Meier curves of the OS of the *IDH1/2wt* astrocytomas WHO IV, *pTERTmt* only and the *IDH1/2wt* glioblastomas. The dashed line represents the median OS.

	Characteristics	HR	95% CI	p
Glioma subtype	<i>IDH1/2wt Astrocytoma WHO IV, pTERTmt only</i>	reference		0.900
	<i>IDH1/2wt Glioblastoma</i>	1.04	0.63-1.72	
Age	40-60 years	reference		0.400
	<40 years	0.70	0.43-1.16	
	>60 years	0.93	0.68-1.28	
Sex	Female	reference		0.040
	Male	1.40	1.02-1.92	
KPS before surgery	90-100	reference		0.030
	≤80	1.40	1.04-1.89	
Surgery modality	Biopsy	reference		0.800
	Resection	0.96	0.67-1.36	

Supplementary Table 2 The univariate analysis of OS for the *IDH1/2wt* astrocytomas WHO IV, *pTERTmt* only and the *IDH1/2wt* glioblastomas taking into account the known prognostic factors for gliomas. The *p*-values of the likelihood ratio test are listed comparing the HR to the reference.



Supplementary Figure 4 Forest plot with hazard ratios of the multivariable analysis of OS for the *IDH1/2wt* astrocytomas WHO IV, *pTERTmt* only and the *IDH1/2wt* glioblastomas taking into account age, sex, KPS before surgery and surgery modality.



Supplementary Figure 5 Kaplan-Meier curves of the OS of the *IDH1/2wt* glioblastomas and the *IDH1/2wt* astrocytomas WHO IV, *pTERTmt* only excluding the *EGFRmt*. The dashed line represents the median OS.