

THE LANCET

Supplementary appendix

This appendix formed part of the original submission and has been peer reviewed.
We post it as supplied by the authors.

Supplement to: Yang J, Siri JG, Remais JV, et al. The Tsinghua–*Lancet* Commission on Healthy Cities in China: unlocking the power of cities for a healthy China. *Lancet* 2018; published online April 17. [http://dx.doi.org/10.1016/S0140-6736\(18\)30486-0](http://dx.doi.org/10.1016/S0140-6736(18)30486-0).

The Tsinghua-*Lancet* Commission on Healthy Cities in China: unlocking the power of cities for a healthy china

Appendix 1 Targets included in the Healthy China 2030 plan

Appendix 2 Urban population growth rates in prefecture-level cities and above in China between 1978 and 2015

Appendix 3 Names of cities in China and their populations by 2015

Appendix 4 The development of Hygienic Cities in China between 1990 and 2015

Appendix 5 Comparison of health city indicators used in China and in Europe

Appendix 6 Methodological notes for the survey of actions adopted by cities in China in building healthy cities

Appendix 7 Methodological notes on the calculation of the Baidu indices for hand-foot-mouth diseases

Appendix 1 Targets included in the Healthy China 2030 plan

	Indicator	2015	2030
Health status	Life expectancy (years)	76.3	79.0
	Infant mortality (% per 1000 people)	8.1	5.0
	Under-5 mortality (% per 1000 people)	10.7	6.0
	Maternal mortality (per 100 000 people)	20.1	12.0
	People meeting the fitness standards defined in the National Physical Fitness standards (% of total population)	89.6	92.2
Healthy living	Health literacy (% of total population)	10	30
	Frequent physical exercises (100 million)	3.6	5.3
Health service and protection	Premature death rate from major chronic diseases (% of total population)	19.1	30% lower than in 2015
	Practicing or assistant physicians per 1000 people	2.2	3.0
	Out-of-pocket payment as a share of total health expenditure (% of total expenditure)	29.3	about 25
Healthy environment	Percentage of days with good air quality* in cities at prefecture level or above (%)	76.7	>80 by 2020, then continuous improvement
	Percentage of surface water scoring at least level 3† (%)	66	>70 by 2020, then continuous improvement
Health industry	Total size of industry	..	¥16 trillion (US\$2.3 trillion in 2017)

*Good air quality means that the air quality index is less than 100. †Level 3 water quality refers to water that can be used for drinking, fishing, and swimming.

Source: Central Committee of Chinese Communist Party. State Council. The Plan for Healthy China 2030. Beijing: Government of the People's Republic of China, 2016.

Appendix 2 Urban population growth rates in prefecture-level cities and above in China between 1978 and 2015

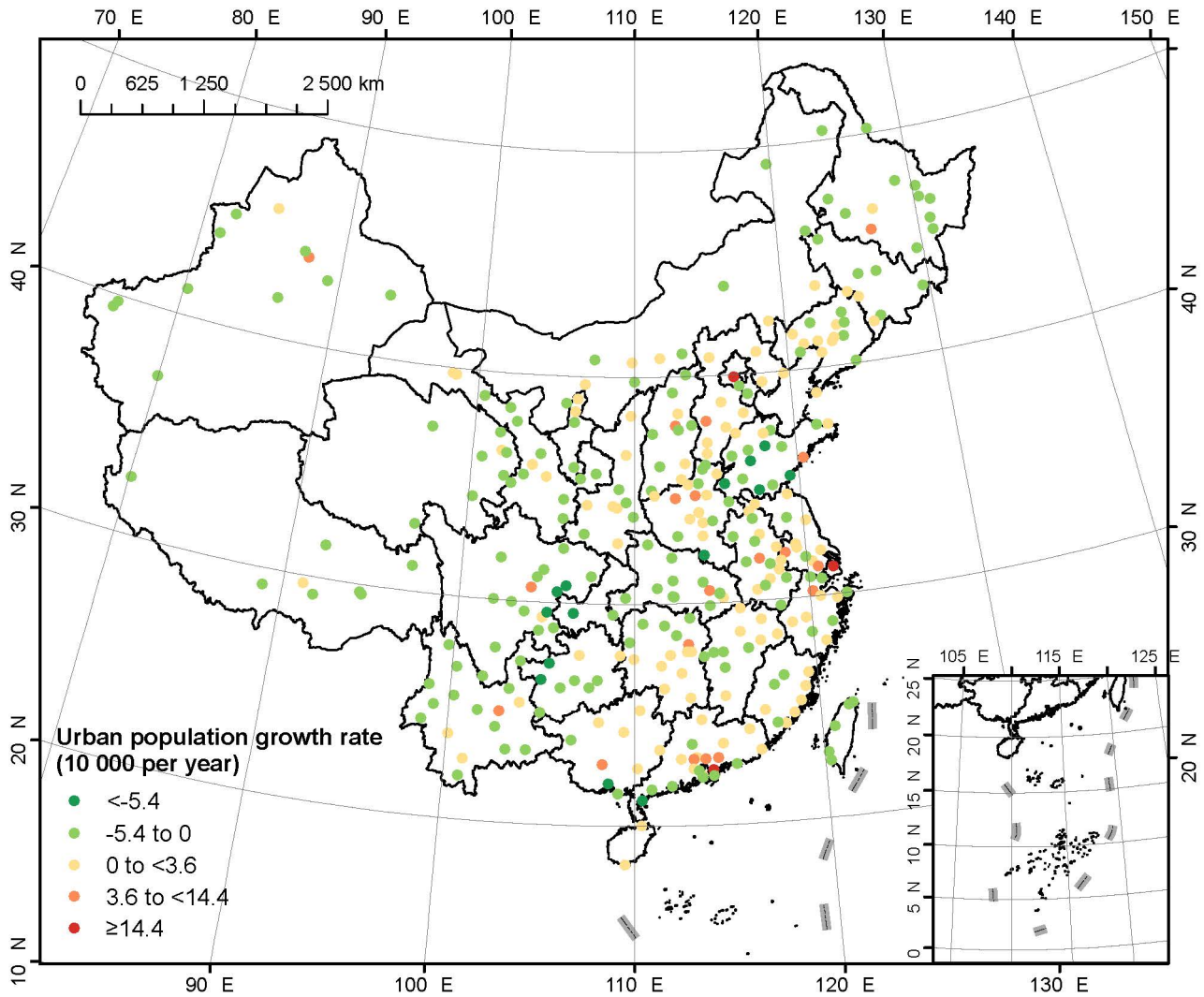


Figure A1 Urban population growth rates in prefecture-level cities and above in China between 1978 and 2015 (Data source: National Bureau of Statistics of China)

Appendix 3 Names of cities in China and their populations by 2015

The list of cities was taken from *China City Statistical Yearbook 2016*¹. Household registered population, i.e., people with *Hukou*, for each city was taken from the same book. Permanent resident population for province and the proportion of urban population was taken from *China Statistical Abstract 2016*². Permanent resident population refers to people who stay in a city for more than half of the year, which include both people who registered with the city and people who registered in other cities. Beijing, Tianjin, Shanghai, and Chongqing are four municipalities directly under the central government. They are considered as province-level cities. We explained in panel 2 that cities in China include both urban and rural parts. Here populations for the entire city and for urban districts under the city were reported for each prefecture-level city. For county-level city, the total population was reported. The proportion of urban population in permanent resident population was only reported at the province level.

Reference

1. National Bureau of Statistics. *China City Statistical Yearbook 2016*. Beijing: China Statistics Press; 2016.
2. National Bureau of Statistics. *China Statistical Abstract 2016*. Beijing: China Statistics Press; 2016.

Table 1. Names of provinces and cities in China and their populations by 2015

Province	City at prefecture level and above	County-level city	Household registered population (10 000)		Permanent resident population (10 000)	% of urban population in permanent resident population
			All city	Districts under city		
Beijing			1345	1345	2171	86.50
Tianjin			1027	1027	1547	82.64
Shanghai			1443	1376	2415	87.60
Chongqing			3372	2129	3017	60.94
Hebei			7651	1778	7425	51.33
	<i>Shijiazhuang</i>		<i>1029</i>	<i>410</i>		
		Xinji	64			
		Jinzhou	57			
		Xinle	51			
	<i>Tangshan</i>		<i>755</i>	<i>334</i>		
		Zunhua	76			
		Qian'an	76			
	<i>Qinhuangdao</i>		<i>296</i>	<i>141</i>		
	<i>Handan</i>		<i>1050</i>	<i>176</i>		
		Wuan	84			
	<i>Xingtai</i>		<i>780</i>	<i>88</i>		
		Nangong	50			
		Shahe	45			
	<i>Baoding</i>		<i>1202</i>	<i>282</i>		
		Dingzhou	124			
		Zhuozhou	68			
		Anguo	42			
		Gaobeidian	58			
	<i>Zhangjiakou</i>		<i>469</i>	<i>91</i>		
	<i>Chengde</i>		<i>382</i>	<i>60</i>		
	<i>Cangzhou</i>		<i>774</i>	<i>55</i>		
		Renqiu	89			
		Botou	63			
		Huanghua	48			
		Hejian	88			

	<i>Langfang</i>		461	85		
		Bazhou	65			
		Sanhe	65			
	<i>Hengshui</i>		452	56		
		Jizhou	35			
		Shenzhou	58			
Shanxi			3498	983	3664	55.03
	<i>Taiyuan</i>		367	285		
		Gujiao	22			
	<i>Datong</i>		316	157		
	<i>Yangquan</i>		132	70		
	<i>Changzhi</i>		337	73		
		Lucheng	23			
	<i>Jincheng</i>		219	38		
		Gaoping	48			
	<i>Shuozhou</i>		162	67		
	<i>Jinzhong</i>		330	61		
		Jiexiu	43			
	<i>Xinzhou</i>		307	54		
		Yuanping	49			
	<i>Linfen</i>		431	81		
		Houma	24			
		Huozhou	31			
	<i>Yuncheng</i>		510	68		
		Yongji	44			
		Hejin	40			
	<i>Lvliang</i>		387	28		
		Xiaoyi	50			
		Fenyang	43			
Inner Mongolia			2154	690	2511	60.30
	<i>Hohhot</i>		239	130		
	<i>Baotou</i>		224	156		
	<i>Wuhai</i>		44	44		
	<i>Chifeng</i>		463	126		
	<i>Tongliao</i>		319	85		
	<i>Hulunbuir</i>		259	37		

		Horgos	8			
		Manzhouli	17			
		Zhalantun	41			
		Yakeshi	34			
		Genhe	14			
		Erguna	8			
	<i>ErDOS</i>		157	28		
	<i>Ulanqab</i>		274	32		
		Fengzhen	32			
	<i>Bayannur</i>		175	52		
		Erlanhaote	3			
		Wulanhaote	32			
		Xilinhaote	18			
		Aershan	5			
Liaoning			4230	1913	4382	67.35
	<i>Shenyang</i>		730	530		
		Xinmin	68			
	<i>Dalian</i>		594	305		
		Wafangdian	100			
		Zhuanghe	90			
	<i>Anshan</i>		346	150		
		Haicheng	108			
	<i>Fushun</i>		216	141		
	<i>Benxi</i>		151	93		
	<i>Dandong</i>		238	78		
		Donggang	61			
		Fengcheng	57			
	<i>Jinzhou</i>		303	97		
		Linhai	52			
		Beizhen	52			
	<i>Yingkou</i>		233	93		
		Dashiqiao	70			
		Gaizhou	70			
	<i>Fuxin</i>		189	76		
	<i>Liaoyang</i>		179	87		
		Dengta	45			

	<i>Panjin</i>		130	65		
	<i>Tieling</i>		300	44		
		Diaobingshan	24			
		Kaiyuan	58			
	<i>Chaoyang</i>		341	61		
		Beipiao	58			
		Lingyuan	69			
	<i>Huludao</i>		280	94		
		Xingcheng	54			
Jilin			2448	930	2753	55.31
	<i>Changchun</i>		754	436		
		Yushu	126			
		Dehui	94			
	<i>Jilin</i>		426	182		
		Huadian	44			
		Jiaohe	44			
		Shulan	64			
	<i>Siping</i>		326	58		
		Gongzhuling	106			
		Shuangliao	37			
	<i>Liaoyuan</i>		121	47		
	<i>Tonghua</i>		221	44		
		Meihekou	61			
		Ji'an	22			
	<i>Baishan</i>		125	57		
		Linjiang				
	<i>Baicheng</i>		197	50		
		Taonan	43			
		Daan	41			
	<i>Songyuan</i>		278	57		
		Fuyu	72			
		Yanji	54			
		Tumen	12			
		Dunhua	47			
		Hunchun	27			
		Longjing	17			
		Helong	18			

Heilongjiang			3641	1385	3812	58.80
	<i>Harbin</i>		961	549		
		Shangzhi	58			
		Wuchang	92			
	<i>Qiqihar</i>		549	137		
		Nehe	71			
	<i>Jixi</i>		182	83		
		Mishan	35			
		Hulin	16			
	<i>Hegang</i>		106	65		
	<i>Shuangyashan</i>		147	19		
	<i>Daqing</i>		275	136		
	<i>Yichun</i>		121	77		
		Tieli	37			
	<i>Jiamusi</i>		238	78		
		Tongjiang	11			
		Fujin	38			
	<i>Qitaihe</i>		83	50		
	<i>Mudanjiang</i>		262	88		
		Suifenhe	7			
		Hailin	39			
		Ning'an	43			
		Muling	29			
		Dongning	21			
	<i>Heihe</i>		168	20		
		Beian	38			
		Wudalianchi	36			
	<i>Suihua</i>		549	84		
		Anda	47			
		Zhaodong	91			
		Hailun	78			
Jiangsu			7718	3509	7976	66.52
	<i>Nanjing</i>		653	653		
	<i>Wuxi</i>		481	249		
		Jiangyin	124			
		Yixing	108			
	<i>Xuzhou</i>		1029	333		

		Xinyi	113			
		Pizhou	188			
	<i>Changzhou</i>		371	291		
		Liyang	80			
	<i>Suzhou</i>		667	341		
		Changshu	107			
		Zhangjiagang	92			
		Kunshan	79			
		Taicang	48			
	<i>Nantong</i>		767	213		
		Qidong	112			
		Rugao	144			
		Haimen	100			
	<i>Lianyungang</i>		531	221		
	<i>Huaian</i>		564	294		
	<i>Yancheng</i>		828	242		
		Dongtai	113			
	<i>Yangzhou</i>		461	232		
		Yizheng	57			
		Gaoyou	82			
	<i>Zhenjiang</i>		272	103		
		Danyang	81			
		Yangzhong	28			
		Jurong	59			
	<i>Taizhou</i>		508	164		
		Xinghua	158			
		Taixing	120			
		Jingjiang	67			
	<i>Suqian</i>		586	174		
Zhejiang			4873	1798	5508	65.80
	<i>Hangzhou</i>		724	533		
		Jiande	51			
		Lin'an	53			
	<i>Ningbo</i>		587	232		
		Yuyao	84			
		Cixi	105			
		Fenghua	48			

	<i>Wenzhou</i>		811	166		
		Ruian	123			
		Leqing	128			
	<i>Jiaying</i>		349	87		
		Haining	68			
		Pinghu	49			
		Tongxiang	69			
	<i>Huzhou</i>		264	111		
	<i>Shaoxing</i>		443	218		
		Zhuji	108			
		Shengzhou	73			
	<i>Jinhua</i>		478	96		
		Lanxi	66			
		Yiwu	77			
		Dongyang	84			
		Yongkang	60			
	<i>Quzhou</i>		256	85		
		Jiangshan	61			
	<i>Zhoushan</i>		97	71		
	<i>Taizhou</i>		597	159		
		Linhai	120			
		Wenling	122			
	<i>Lishui</i>		266	40		
		Longquan	29			
Anhui			6949	2017	6144	50.50
	<i>Hefei</i>		718	251		
		Caohu	86			
	<i>Wuhu</i>		385	146		
	<i>Bengbu</i>		376	114		
	<i>Huainan</i>		246	184		
	<i>Maanshan</i>		229	82		
	<i>Huaibei</i>		217	105		
	<i>Tongling</i>		74	45		
	<i>Anqing</i>		622	74		
		Tongcheng	75			
	<i>Huangshan</i>		148	45		
	<i>Fuyang</i>		1043	223		

		Jieshou	80			
	<i>Bozhou</i>		635	163		
	<i>Chuzhou</i>		449	54		
		Tianchang	63			
		Mingguang	64			
	<i>Lu'an</i>		718	190		
	<i>Chizhou</i>		162	67		
	<i>Xuancheng</i>		280	87		
		Ningguo	39			
Fujian			3721	1072	3839	62.60
	<i>Fuzhou</i>		678	200		
		Fuqing	134			
		Changle	71			
	<i>Xiamen</i>		211	211		
	<i>Putian</i>		344	231		
	<i>Sanming</i>		284	28		
		Yong'an	33			
	<i>Quanzhou</i>		722	108		
		Shishi	33			
		Jinjiang	119			
		Nan'an	159			
	<i>Zhangzhou</i>		502	59		
		Longhai	86			
	<i>Nanping</i>		320	86		
		Shaowu	31			
		Wuyishan	24			
		Jian'ou	55			
	<i>Longyan</i>		309	102		
		Zhangping	30			
	<i>Ningde</i>		349	48		
		Fu'an	67			
		Fuding	59			
Jiangxi			4914	1198	4566	51.62
	<i>Nanchang</i>		520	301		
	<i>Jingdezhen</i>		167	46		
		Leping	93			
	<i>Pingxiang</i>		198	88		

	<i>Jiujiang</i>		517	67		
		Ruichang	46			
		Gongqingcheng	7			
	<i>Xinyu</i>		124	89		
	<i>Yintan</i>		127	24		
		Guixi	64			
	<i>Ganzhou</i>		961	154		
		Ruijin	70			
	<i>Shangrao</i>		774	139		
		Dexing	34			
	<i>Fuzhou</i>		399	118		
	<i>Ji'an</i>		530	58		
		Jinggangshan	17			
	<i>Yichun</i>		597	113		
		Zhangshu	61			
		Fengcheng	149			
		Gaoan	87			
Shandong			9822	3231	9847	57.01
	<i>Jinan</i>		626	366		
		Zhangqiu	103			
	<i>Qingdao</i>		783	373		
		Jiaozhou	83			
		Jimo	115			
		Pingdu	139			
		Laixi	74			
	<i>Zibo</i>		430	286		
	<i>Zaozhuang</i>		408	238		
		Tengzhou	170			
	<i>Dongying</i>		191	86		
	<i>Yantai</i>		653	185		
		Longkou	64			
		Laiyang	86			
		Laizhou	85			
		Penglai	45			
		Zhaoyuan	57			
		Qixia	61			
		Haiyang	66			

	<i>Weifang</i>		894	187		
		Qingzhou	94			
		Zhucheng	110			
		Shouguang	107			
		Gaomi	96			
		Changyi	59			
		Anqiu	96			
	<i>Jining</i>		867	183		
		Qufu	64			
		Zoucheng	119			
	<i>Tai'an</i>		566	162		
		Xintai	141			
		Feicheng	99			
	<i>Dezhou</i>		587	122		
		Laoling	71			
		Yucheng	53			
	<i>Weihai</i>		255	132		
		Rongcheng	67			
		Rushan	56			
	<i>Liaocheng</i>		622	123		
		Linqing	80			
	<i>Linyi</i>		1124	262		
	<i>Laiwu</i>		128	128		
	<i>Rizhao</i>		296	134		
	<i>Heze</i>		1003	158		
	<i>Binzhou</i>		389	108		
Henan			11103	2070	9480	46.85
	<i>Zhengzhou</i>		810	344		
		Gongyi	84			
		Xinmi	89			
		Xingyang	68			
		Xinzheng	61			
		Dengfeng	72			
	<i>Kaifeng</i>		554	87		
	<i>Luoyang</i>		728	201		
		Yanshi	63			
	<i>Pingdingshan</i>		562	110		

		Ruzhou	115			
		Wugang	45			
	<i>Anyang</i>		617	116		
		Linzhou	113			
	<i>Hebi</i>		169	64		
	<i>Xinxiang</i>		637	105		
		Huixian	87			
		Weihui	54			
	<i>Jiaozuo</i>		372	98		
		Qinyang	49			
		Mengzhou	38			
	<i>Puyang</i>		429	71		
	<i>Xuchang</i>		505	42		
		Yuzhou	132			
		Changge	79			
	<i>Luohe</i>		268	135		
	<i>Sanmenxia</i>		228	29		
		Yima	16			
		Lingbao	75			
	<i>Shangqiu</i>		961	182		
		Yongcheng	158			
	<i>Nanyang</i>		1189	188		
		Dengzhou	177			
	<i>Xinyang</i>		898	153		
	<i>Zhoukou</i>		1244	60		
		Xiangcheng	124			
	<i>Zhumadian</i>		931	84		
		<i>Jiyuan</i>	71			
Hubei			5308	1586	5852	56.85
	<i>Wuhan</i>		829	516		
	<i>Huangshi</i>		268	85		
		Daye	97			
	<i>Shiyan</i>		346	118		
		Danjiangkou	46			
	<i>Jingzhou</i>		643	98		
		Shishou	63			
		Honghu	93			

		Songzi	84			
	<i>Yichang</i>		398	128		
		Yidu	40			
		Dangyang	47			
		Zhijiang	49			
	<i>Xiangyang</i>		592	225		
		Laohekou	52			
		Zaoyang	114			
		Yicheng	56			
	<i>Ezhou</i>		110	110		
	<i>Jingmen</i>		299	60		
		Zhongxiang	106			
	<i>Xiaogan</i>		526	97		
		Yingcheng	67			
		Anlu	62			
		Hanchuan	112			
	<i>Huanggang</i>		744	35		
		Macheng	117			
		Wuxue	82			
	<i>Xianning</i>		300	61		
		Chibi	53			
	<i>Suizhou</i>		251	53		
		Guangshui	93			
		Lichuan	92			
		Enshi	81			
		Xiantao	156			
		Tianmen	163			
		Qianjiang	102			
Hunan			6947	1391	6783	50.89
	<i>Changsha</i>		680	319		
		Liuyang	147			
	<i>Zhuzhou</i>		403	96		
		Liling	106			
	<i>Xiangtan</i>		289	87		
		Xiangxiang	92			
		Shaoshan	12			

	<i>Hengyang</i>		799	100		
		Leiyang	142			
		Changning	96			
	<i>Shaoyang</i>		821	70		
		Wugang	84			
	<i>Yueyang</i>		564	109		
		Miluo	75			
		Lingxiang	54			
	<i>Yiyang</i>		481	136		
		Yuanjiang	75			
	<i>Changde</i>		609	141		
		Jinshi	25			
	<i>Chenzhou</i>		528	77		
		Zixing	38			
	<i>Yongzhou</i>		635	116		
	<i>Huaihua</i>		518	38		
		Hongjiang	50			
	<i>Zhangjiajie</i>		170	52		
	<i>Loudi</i>		448	49		
		Lengshuijiang	37			
		Lianyuan	118			
		Jishou	31			
Guangdong			8994	4419	10849	68.71
	<i>Guangzhou</i>		854	854		
	<i>Shaoguan</i>		330	93		
		Lechang	53			
		Nanxiong	48			
	<i>Shenzhen</i>		355	355		
	<i>Zhuhai</i>		112	112		
	<i>Shantou</i>		550	543		
	<i>Foshan</i>		389	389		
	<i>Jiangmen</i>		391	140		
		Taishan	97			
		Heshan	37			
		Kaiping	68			
	<i>Zhanjiang</i>		823	163		

		Lianjiang	180			
		Leizhou	177			
		Wuchuan	119			
	<i>Huizhou</i>		357	145		
	<i>Maoming</i>		786	290		
		Gaozhou	178			
		Huazhou	173			
		Xinyi	145			
	<i>Zhaoqing</i>		438	134		
		Sihui	46			
	<i>Chaozhou</i>		273	166		
	<i>Meizhou</i>		544	97		
		Xinning	118			
	<i>Zhongshan</i>		159	159		
	<i>Dongguan</i>		195	195		
	<i>Shanwei</i>		359	52		
		Lufeng	187			
	<i>Heyuan</i>		366	31		
	<i>Yangjiang</i>		292	120		
		Yangchun	122			
	<i>Qingyuan</i>		419	137		
		Lianzhou	53			
		Yingde	110			
	<i>Jieyang</i>		702	209		
		Puning	246			
	<i>Yunfu</i>		299	33		
		Luoding	129			
Guangxi			5518	1530	4796	47.06
	<i>Nanning</i>		740	290		
	<i>Liuzhou</i>		382	120		
	<i>Guilin</i>		529	128		
	<i>Wuzhou</i>		344	79		
		Cenxi	95			
	<i>Beihai</i>		172	65		
	<i>Fangchenggang</i>		96	57		
		Dongxing	15			

	<i>Qinzhou</i>		404	148		
	<i>Yulin</i>		711	109		
		Beiliu	148			
	<i>Guigang</i>		549	198		
		Guiping	200			
	<i>Baise</i>		413	36		
		Jingxi	66			
	<i>Laibin</i>		266	111		
		Heshan	14			
	<i>Chongzuo</i>		249	37		
		Pingxiang	11			
	<i>Hezhou</i>		240	118		
	<i>Hechi</i>		425	34		
		Yizhou	66			
Hainan			319	223	911	55.12
	<i>Haikou</i>		165	165		
	<i>Sanya</i>		58	58		
	<i>Sansha</i>		0.04	0.04		
		Wuzhishan	11			
		Qionghai	51			
		Wenchang	57			
		Wanning	64			
		Dongfang	44			
Sichuan			8397	2791	8204	47.69
	<i>Chengdu</i>		1228	698		
		Dujiangyan	62			
		Pengzhou	81			
		Qionglai	66			
		Chongzhou	67			
	<i>Zigong</i>		327	151		
	<i>Panzhihua</i>		111	68		
	<i>Luzhou</i>		506	150		
	<i>Deyang</i>		390	69		
		Guanghan	61			
		Shifang	44			
		Mianzhu	51			

	<i>Miayang</i>		545	128		
		Jiangyou	89			
	<i>Guangyuan</i>		305	93		
	<i>Suining</i>		379	152		
	<i>Neijiang</i>		420	141		
	<i>Ziyang</i>		504	110		
		Jianyang	149			
	<i>Leshan</i>		354	116		
		Emeishan	43			
	<i>Yibin</i>		552	127		
	<i>Nanchong</i>		742	194		
		Langzhong	86			
	<i>Dazhou</i>		683	180		
		Wanyuan	59			
	<i>Guang'an</i>		467	127		
		Huaying	36			
	<i>Yaan</i>		155	62		
	<i>Meishan</i>		349	88		
	<i>Bazhong</i>		380	136		
		Kangding	11			
		Maerkang	6			
		Xichang	65			
Guizhou			3156	715	3530	42.01
	<i>Guiyang</i>		392	236		
		Qingzhen	52			
	<i>Liupanshui</i>		333	47		
	<i>Zunyi</i>		793	91		
		Chishui	31			
		Renhuai	70			
	<i>Anshun</i>		296	131		
	<i>Tongren</i>		437	47		
	<i>Bijie</i>		904	162		
		Kaili	57			
		Xingyi	85			
		Fuquan	33			

		Duyun	49			
Yunnan			2884	648	4742	43.33
	<i>Kunming</i>		556	279		
		Anning	27			
	<i>Yuxi</i>		216	44		
	<i>Qujing</i>		648	73		
		Xuanwei	153			
	<i>Zhaotong</i>		599	89		
	<i>Lijiang</i>		121	15		
	<i>Baoshan</i>		259	92		
		Tengchong	67			
	<i>Puer</i>		250	23		
	<i>Lincang</i>		235	32		
		Dali	62			
		Chuxiong	52			
		Mangshi	39			
		Ruli	13			
		Kaiyuan	28			
		Geju	39			
		Jinghong	42			
		Wenshan	49			
		Mengzi	40			
		Mile	54			
		Shangri-La	15			
Xizang			324	90	324	27.74
	<i>Lhasa</i>		53	21		
	<i>Xigaze</i>		75	16		
	<i>Qamdo</i>		73	11		
Shaanxi			3922	1346	3793	53.92
	<i>Xi'an</i>		816	621		
	<i>Tongchuan</i>		84	74		
	<i>Baoji</i>		385	142		
	<i>Xiayang</i>		528	92		
		Xingping	62			
	<i>Yan'an</i>		236	47		

	<i>Hanzhong</i>		385	58		
	<i>Weinan</i>		557	97		
		Hancheng	40			
		Huayin	26			
	<i>Yulin</i>		377	57		
	<i>Shangluo</i>		251	56		
	<i>Ankang</i>		305	101		
Gansu			2454	813	2600	43.19
	<i>Lanzhou</i>		322	205		
	<i>Jiayuguan</i>		20	20		
	<i>Jinchang</i>		46	21		
	<i>Baiyin</i>		181	49		
	<i>Tianshui</i>		367	131		
	<i>Wuwei</i>		190	103		
	<i>Zhangye</i>		130	51		
	<i>Pingliang</i>		233	51		
	<i>Jiuquan</i>		112	42		
		Yumen	16			
		Dunhuang	14			
	<i>Qingyang</i>		267	38		
	<i>Dingxi</i>		301	46		
	<i>Longnan</i>		286	56		
		Linxia	25			
		Hezuo	9			
Qinghai			371	136	588	50.30
	<i>Xining</i>		201	94		
	<i>Haidong</i>		170	41		
		Golmud	14			
		Delingha	8			
		Yushu	11			
Ningxia			664	279	668	55.23
	<i>Yinchuan</i>		179	109		
	<i>Shizuishan</i>		75	43		
	<i>Wuzhong</i>		140	40		
		Qingtongxia	28			

	<i>Guyuan</i>		150	46		
	<i>Zhongwei</i>		120	41		
Xinjiang			297	291	2360	47.23
	<i>Urumqi</i>		267	261		
	<i>Karamay</i>		30	30		
		Sihezi	39			
		Cocodala	8			
		Hami	43			
		Changji	37			
		Kuitun	16			
		Yining	55			
		Tacheng	15			
		Aletai	20			
		Bole	26			
		Korla	49			
		Akesu	51			
		Atus	27			
		Kashi	63			
		Hetian	35			
		Fukang	17			
		Wusu	23			
		Alar	22			
		Tumushuke	17			
		Beitun	5			
		Alashankou	1			
		Tiemenguan	5			
		Horgos	7			
		Wujiaqu	9			
		Shuanghe	5			
Total			137462	77116	137462	56.10

Appendix 4 The development of Hygienic Cities in China between 1990 and 2015

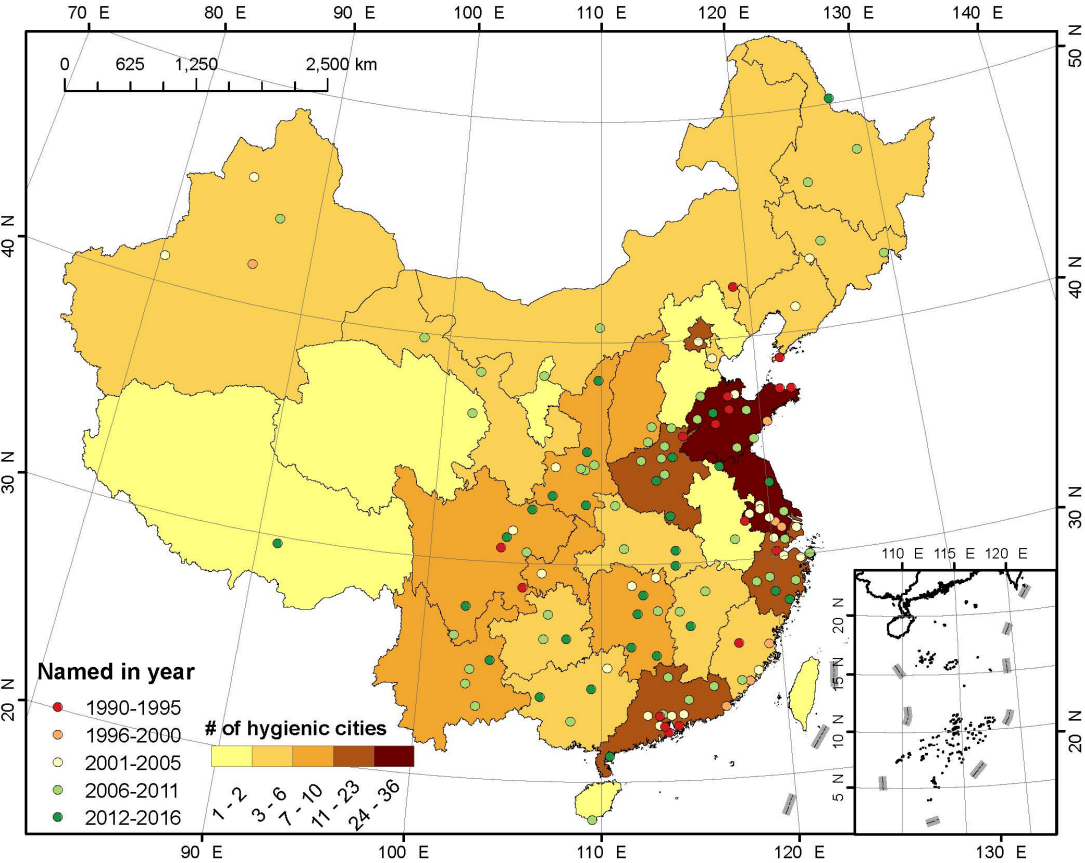


Figure A2 The development of Hygienic Cities in China between 1990 and 2015

Appendix 5 Comparison of health city indicators used in China and in Europe

Here we compared the indicator system of healthy cities (total 39 indicators) used by NPHCC to the Healthy Cities project indicators (total 32 indicators) used by WHO European Office¹ to give an example on the similarity and dissimilarity between China's indicator system and others (Table 1). There are other indicator systems such as WHO's Urban HEART and European Urban Health Indicators System, more can be found from Rothenberg et al. (2015)².

Reference

1. Webster P, Sanderson D. Healthy cities indicators-a suitable instrument to measure health? *J Urban Health* 2013; **90**(SUPPL 1): 52-61.
2. Rothenberg R, Stauber C, Weaver S, Dai D, Prasad A, Kano M. Urban health indicators and indices--current status. *BMC Public Health* 2015; **15**: 494.

Table 1 Comparison of indicator systems for healthy cities used in China and Europe (Words in bold fonts are categories used in the European system).

Category	China	Europe
Healthy Population / Health	(1) Life expectancy (2) Infant mortality rate (3) Maternal mortality rate (4) Prevalence of hypertension in adults (5) Total incidence rate of infectious diseases (6) Incidence rate of HIV/AIDS and the percentage of patients under management (7) Incidence rate of tuberculosis (8) Smoking rate of persons > 15 years (9) Percentage of frequent exercisers (10) Residents' health literacy	(1) Mortality (2) Main causes of death (3) Low birth weight
Health services	(1) Percentage of patients with diabetes whose blood sugar levels are under control (2) Percentage of patients with severe mental disorder who are under management (3) Percentage of Children who are under management (4) Percentage of women who have received care before giving birth (5) Number of doctor/assistant doctor per 1 000 (6) Number of public health worker per 10 000 (7) Percentage of health expenditure to total government expenditure	(1) City health education programs (2) Immunization rates (3) Inhabitants per primary health care practitioner (4) Inhabitants per nurse (5) Percentage of population covered by health insurance (6) Availability of services in foreign languages (7) Health debates in civil council

	(8) Number of beds per 1 000 elderlies	
Healthy environment /Environmental indicators	<ul style="list-style-type: none"> (1) Percentage of days with good air quality (2) Percentage of waste water subject to centralized processing (3) Percentage of tap water that meet quality standards (urban and rural) (4) Percentage of safety disposal of garbage (5) Prevalence rate of harmless toilets (rural) (6) Public green space per capita (7) Percentage of toilets meet and over the grade three 	<ul style="list-style-type: none"> (1) Air pollution (2) Water quality (3) Sewage collection (4) Household waste treatment (5) Green space (6) Derelict industrial sites (7) Sport and leisure facilities (8) Pedestrianization (9) Cycle routes (10) Public transport access (11) Public transport range (12) Living space
Healthy society /Socioeconomic indicators	<ul style="list-style-type: none"> (1) Percentage of out-of-pocket expense to total health expenditure (2) Prevalence rate of basic endowment insurance (3) Unemployment rate in urban areas (4) Substitution rate of basic living allowance to consumption (5) Share of public transport in all journeys (6) Average gross floor area of living space for urban dwellers (7) Area of urban sportsgrounds per capita (8) Kilometers of healthy walking trails per 10 000 (9) Mortality rate due to accidents per 100 million GDP (10) Percentage of food that meet the quality standards in investigation (11) Gross enrollment rate in high schools 	<ul style="list-style-type: none"> (1) Percentage of population in inadequate housing (2) Homelessness (3) Unemployment (4) Poverty (5) Availability of child care (6) Age of mothers at time of birth (7) Abortion rate (8) Employment of disable people
Governance	<ul style="list-style-type: none"> (1) Health in all policies (2) Healthy City planning (3) Annual assessment report 	

Appendix 6 Methodological notes for the survey of actions adopted by cities in China in building healthy cities

In order to learn what have been done by cities in China in building healthy cities, we worked with the National Patriotic Health Campaign Committee (NPHCC) Office in National Health and Family Planning Commission to conduct a mail-in survey between February and March in 2017. NPHCC Office helped us to invite any cities that are working to become healthy cities to participate in the survey voluntarily. We developed a questionnaire with open questions to ask cities to report their actions in five aspects and any innovations in building healthy cities.

- Environmental management
- Health services
- Prevention and control of diseases
- Social services
- Actions to increase public participation

In total, we received responses from 36 cities, including 14 cities that have been included in the first batch of 38 cities in the national pilot program (Table 1).

Table 1 Names of cities that participated in the survey

Types	Names
Cites included in the national pilot-program	Baoji, Changchun, Chengdu, Hangzhou, Karamay, Luzhou, Nanning, Ningbo, Suzhou, Weihai, Wuxi, Xicheng District (Beijing), Yichang, Zhengzhou
Other cities	Changzhou, Dongtai, Gaoyou, Gongyi, Guilin, Jiangyin, Jiyuan, Linzhou, Luoyang, Pingdingshan, Taicang, Tongling, Zhenjiang, Zhangjiagang, Xinxiang, Xinzheng, Xinyang, Xucang, Wugang, Yangzhong, Yizheng, Yongcheng

Appendix 7 Methodological notes on the calculation of the Baidu indices for hand-foot-mouth diseases

Here we show an example of using search inquiries to track the occurrence of HFMD disease because data from search engines respond quicker than passive disease surveillance systems and can reflect the current trend of the epidemic.

Baidu Index (<https://index.baidu.com/>) is an open-access platform which reflects trends of Baidu users' daily searching behaviors on both PCs and mobile terminals. We collected daily index data on HFMD related keywords (in Chinese) in Chengdu from May 1, 2013 to December 31, 2016. Thirty-eight keywords involving symptoms, transmission and treatments were collected. Daily aggregated counts of HFMD cases from 2013 to 2016 in Chengdu, China were obtained from CDC-Sichuan. No personal information was revealed. Both health data and index data were aggregated by week in this study.

In this study, we built a composite index.

$$index_j = \sum_{i=1}^j w_i x_i \quad (1)$$

where $index_j$ represents the composite index of the first j keywords, x_i is a single keyword, w_i is the weight of x_i , that is determined by its cross-correlation with counts of HFMD cases,

$$HFMD = \alpha + \beta index_j + \varepsilon \quad (2)$$

where HFMD is weekly counts of HFMD cases, ε denotes residual term.

HFMD related keywords were sorted according to their cross-correlation with the counts of HFMD cases. Then the keywords were entered into equation 1 to form different composite indices. The process continued until R^2 of the regression model (equation 2) did not increase.