

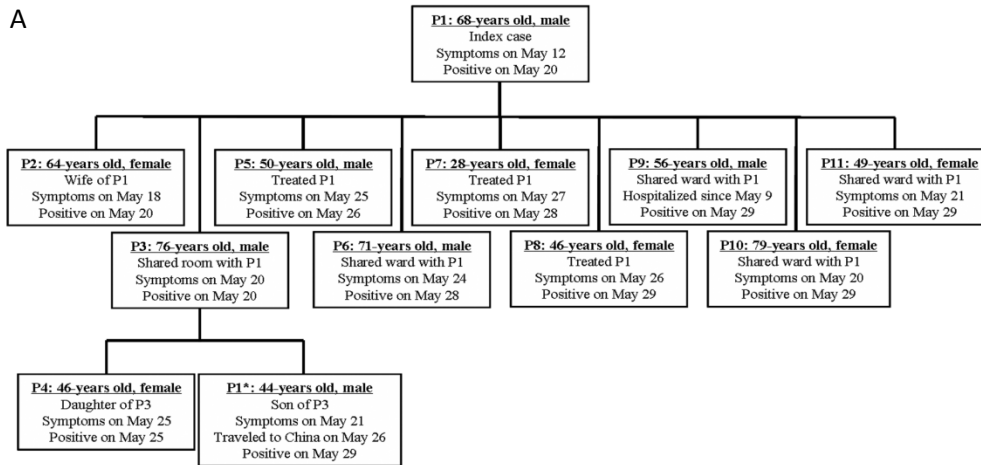
# THE LANCET

## Supplementary appendix

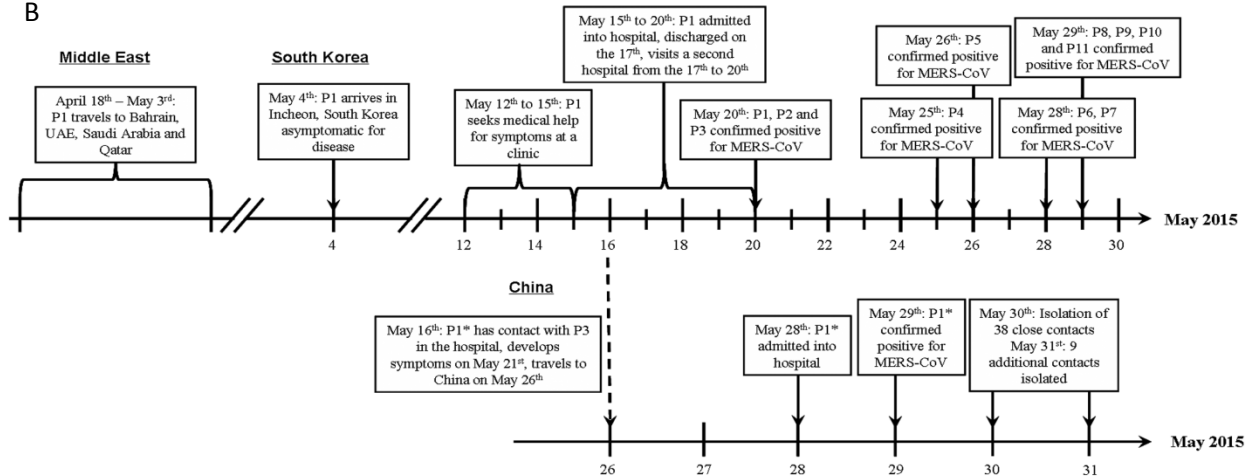
This appendix formed part of the original submission. We post it as supplied by the authors.

Supplement to: Su S, Wong G, Liu Y, Gao GF, Li S, Bi Y. MERS in South Korea and China: a potential outbreak threat? *Lancet* 2015; **385**: 2349–50.

A



B



- A. MERS-CoV transmission chain between the first 11 human cases in South Korea, and imported case to China.
- B. Timeline of events April - May 2015 leading up to and including the cluster of infections in South Korea and imported case to China.