

SUPPLEMENTARY INFORMATION

Lack of interleukin-33 and its receptor does not prevent calcipotriol-induced atopic dermatitis-like inflammation in mice.

Wojciech Pietka^{1,2}, Olav Sundnes^{1,2,3}, Clara Hammarström², Manuela Zucknick⁴, Denis Khnykin^{1,2} & Guttorm Haraldsen^{1,2,*}

¹K.G.Jebsen Inflammation Research Centre, ²Department of Pathology, ³Department of Rheumatology, Dermatology and Infectious Diseases, ⁴Oslo Center for Biostatistics and Epidemiology, Department of Biostatistics, Institute of Basic Medical Sciences, University of Oslo and Oslo University Hospital, Norway

*Correspondence: Guttorm Haraldsen, Department of Pathology, Oslo University Hospital Rikshospitalet, PO Box 4950 Nydalen, NO-0424 Oslo, Norway. Phone: (+47) 23 07 14 92 Fax: (+47) 23 07 15 11. E mail: guttorm.haraldsen@medisin.uio.no

Supplementary Figure Legends

Figure S1: Genotyping of IL-33KO, ST2KO and dKO

Panel **a** represents uncropped gel image, with a dotted line marking separate genotyping results – upper panel for IL33 and lower panel for ST2. The positions of molecular weight markers are indicated on the left in base pairs.

Figure S2: Ear thickness is comparable in vehicle-treated mice

Panel **a** shows ear thickness of vehicle-treated mice, measured on day 0 and day 8 (GraphPad Prism v7.0).

Figure S3: MC903 treatment leads to similar CD3+ T cell density across groups

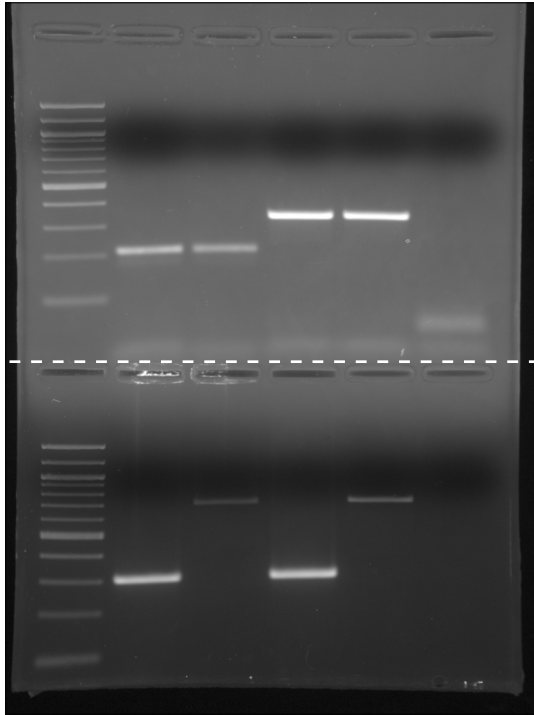
Panel **a** shows representative pictures of mouse ears immunostained with CD3 antibody. Arrows indicate CD3 positive cells. Original magnification x200. Scale bar 100 μm . Panel **b** represents quantification of CD3+ cells in epidermal compartments. Data are represented as median value (GraphPad Prism v7.0).

Figure S4: Th2 cytokine expression is comparable between vehicle-treated mice

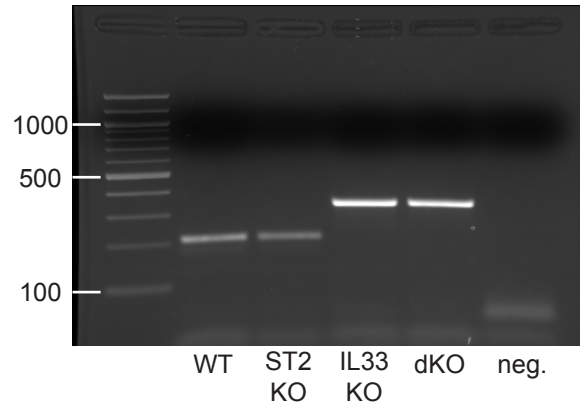
Panel **a** represents mRNA expression of *Il4* and *Il13* in vehicle-treated mice. Data are represented as ΔCt (GraphPad Prism v7.0).

Fig S1

a



IL33 genotyping



ST2 genotyping

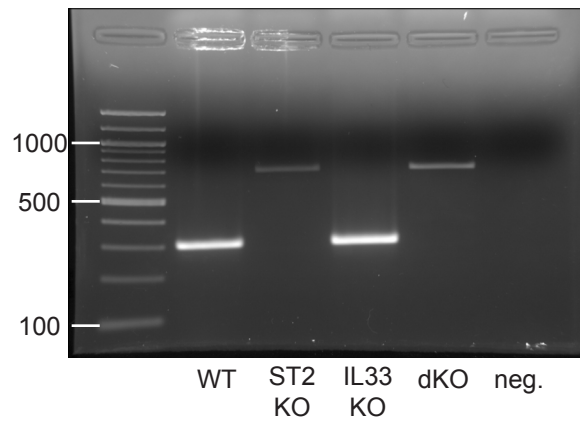


Fig S2

a

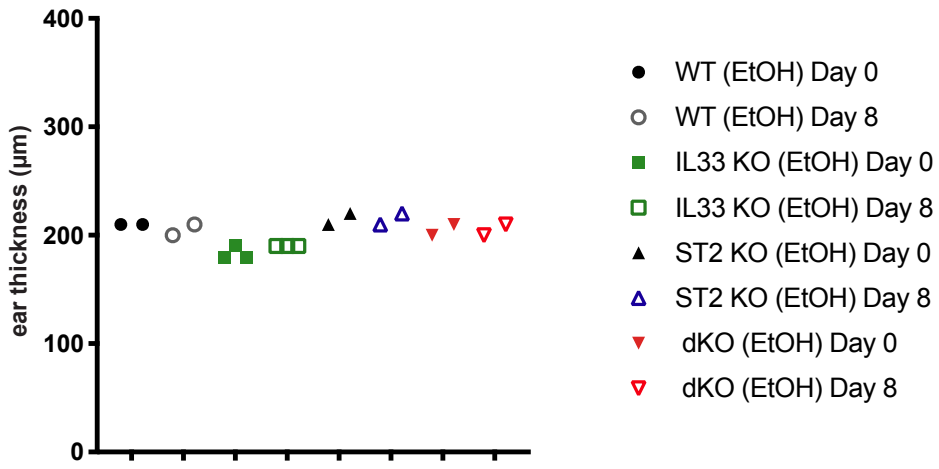


Fig S4

a

