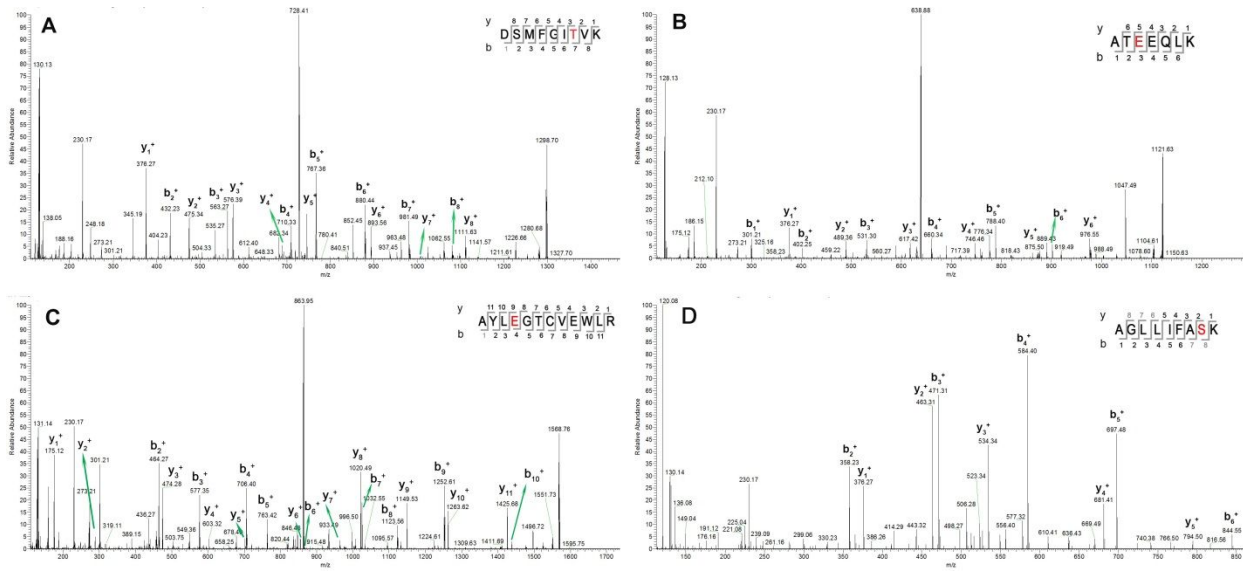


Supplementary Figure 1



Supplementary Figure 1. Representative four peptides with SAAVs were manually confirmed by checking spectra where they are detected in different strategies. A, Variant peptide DSMFGITVK from protein integrin alpha-6 (ITGA 6, A419T) is detected in all three different strategies and the variant is assayed as deleterious SAAVs; B, Variant peptide ATEEQLK from protein Serum albumin (ALB, K565E) is only detected in SEQUEST strategy; C, Variant peptide AYLEGTCVEWLR from protein HLA class I histocompatibility antigen, A alpha chain (HLA-A, D185E) is only detected in MetaMorpheus strategy; D, Variant peptide AGLLIFASK from protein ADP-ribosylation factor-like protein 5A (ARL5A, N125S) is only detected in the SAVControl strategy.