

**Basilar artery dolichosis is associated with a poor 90-day outcome in acute
isolated pontine infarction**

Shu-gang Cao^{1,+}, Xiaoxing Ni^{1,+}, Qian Wu¹, Jun He¹, Ping Cui², Tingting Ge¹,
Yuancheng Li³, Jian Wang¹, Wen'an XU¹, Mingwu Xia^{1,*}

¹ the Hefei Affiliated Hospital of Anhui Medical University, the Second People's
Hospital of Hefei, Department of Neurology, Hefei, Anhui 230011, P.R. China

² the Hefei Affiliated Hospital of Anhui Medical University, the Second People's
Hospital of Hefei, Department of Radiology, Hefei, Anhui 230011, P.R. China

³ Department of Epidemiology, School of Public Health, Nanjing Medical University,
Nanjing, Jiangsu 210000, P.R. China

*Corresponding author: Mingwu Xia, Email: xiamingwu1965@163.com

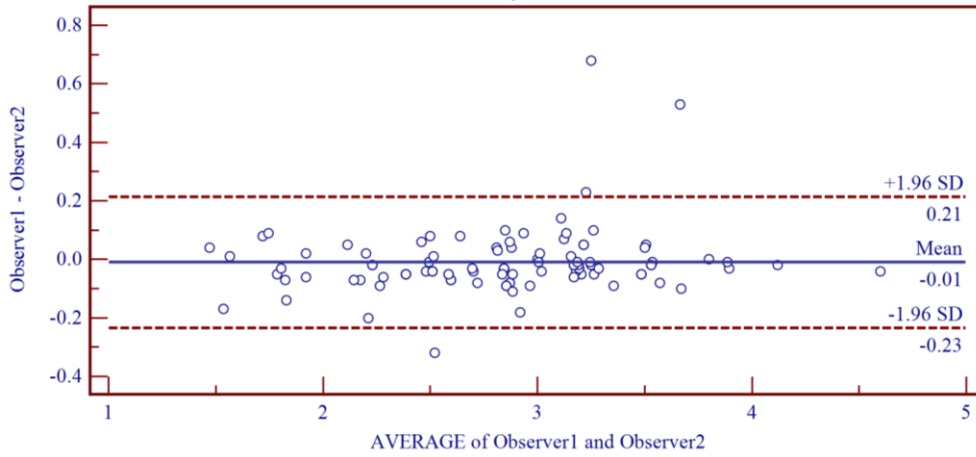
⁺these authors contributed equally to this work

Supplementary table 1 Comparison of associated factors in patients with different 90-day outcomes.

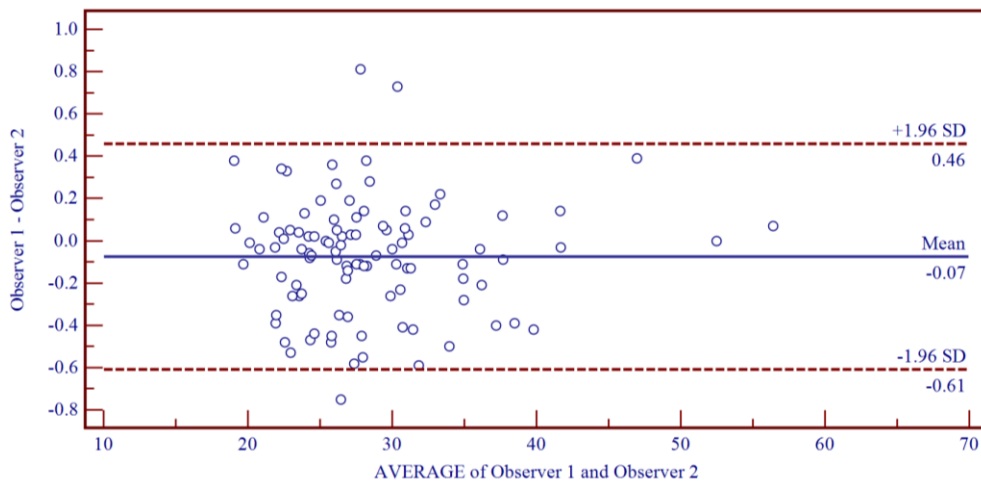
Variables	90-day outcome		<i>p</i> <i>value</i>
	poor (n = 20)	good (n = 81)	
Demographic data			
Age (years)	70.5 (60.3, 78.8)	63.0 (56.5, 76.0)	0.218
Male, n (%)	11 (55.0)	48 (59.3)	0.729
Risk factors			
Hypertension, n (%)	18 (90.0)	65 (80.2)	0.487
Diabetes, n (%)	9 (45.0)	37 (45.7)	0.956
Dyslipidemia, n (%)	8 (40.0)	29 (35.8)	0.727
Smoking, n (%)	5 (25.0)	19 (23.5)	1.000
Drinking, n (%)	3 (15.0)	11 (13.6)	1.000
Prior stroke / TIA history, n (%)	6 (30.0)	17 (21.0)	0.573
Time from onset to admission (hours)	14.5 (7.0, 50.0)	45.0 (18.0, 69.5)	0.218
Baseline NIHSS score (scores)	7 (6, 8)	5 (3, 6)	<0.001
BA diameter (mm)	2.91 ±0.44	2.82 ±0.65	0.531
Length of BA			
Curve length (mm)	30.61 (26.81, 34.54)	26.44 (23.57, 30.10)	0.012
BAL (mm)	28.39 (25.61, 31.44)	26.04 (22.95, 28.64)	0.039
BL (mm)	4.12 (2.97, 6.97)	0 (0, 4.74)	0.011
BA dolichosis , n (%)	12 (60.0)	22 (27.2)	0.005
BA bending , n (%)	16 (80.0)	37 (46.7)	0.006
BADE , n (%)	0 (0)	1 (1.2)	1.000*
BAH , n (%)	1 (5.0)	10 (12.3)	0.587
BA stenosis , n (%)	4 (20)	12 (14.8)	0.821
Infarct size (mm)	15.80 ±4.61	14.55 ±4.98	0.312
Initial treatment after admission			
Dual antiplatelet therapy, n (%)	6 (30.0)	30 (37.0)	0.558
Single-antiplatelet therapy, n (%)	13 (65.0)	50 (61.8)	
Single-antiplatelet plus anticoagulation, n (%)	1 (5.0)	1 (1.2)	

TIA transient ischemic attack, BA basilar artery, BAL basilar artery length, BL bending length,

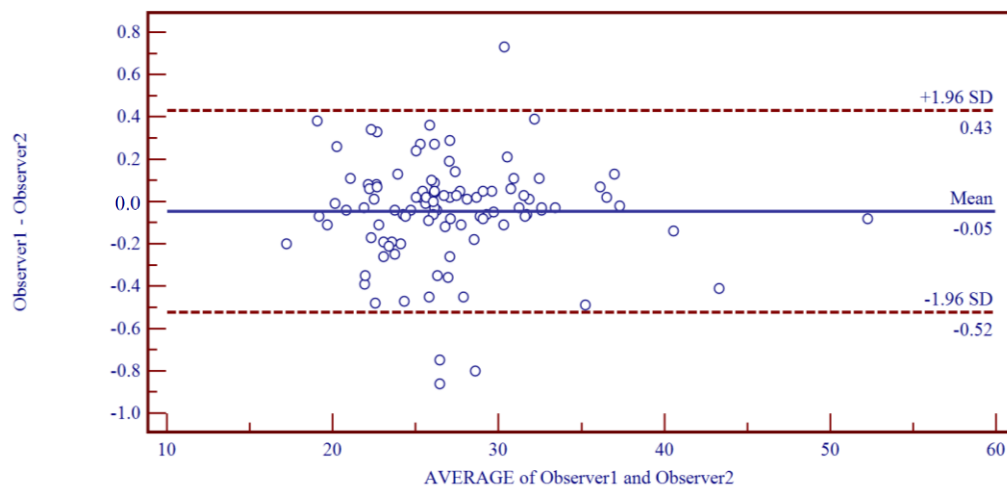
BADE basilar artery dolichoectasia, BAH basilar artery hypoplasia. * Fisher's Exact Test



Supplementary Figure 1. Bland-Altman plot of BA diameter of the senior and junior readers.



Supplementary Figure 2. Bland-Altman plot of BA curve length of the senior and junior readers.



Supplementary Figure 3. Bland-Altman plot of basilar artery length (BAL) of the senior and junior readers.