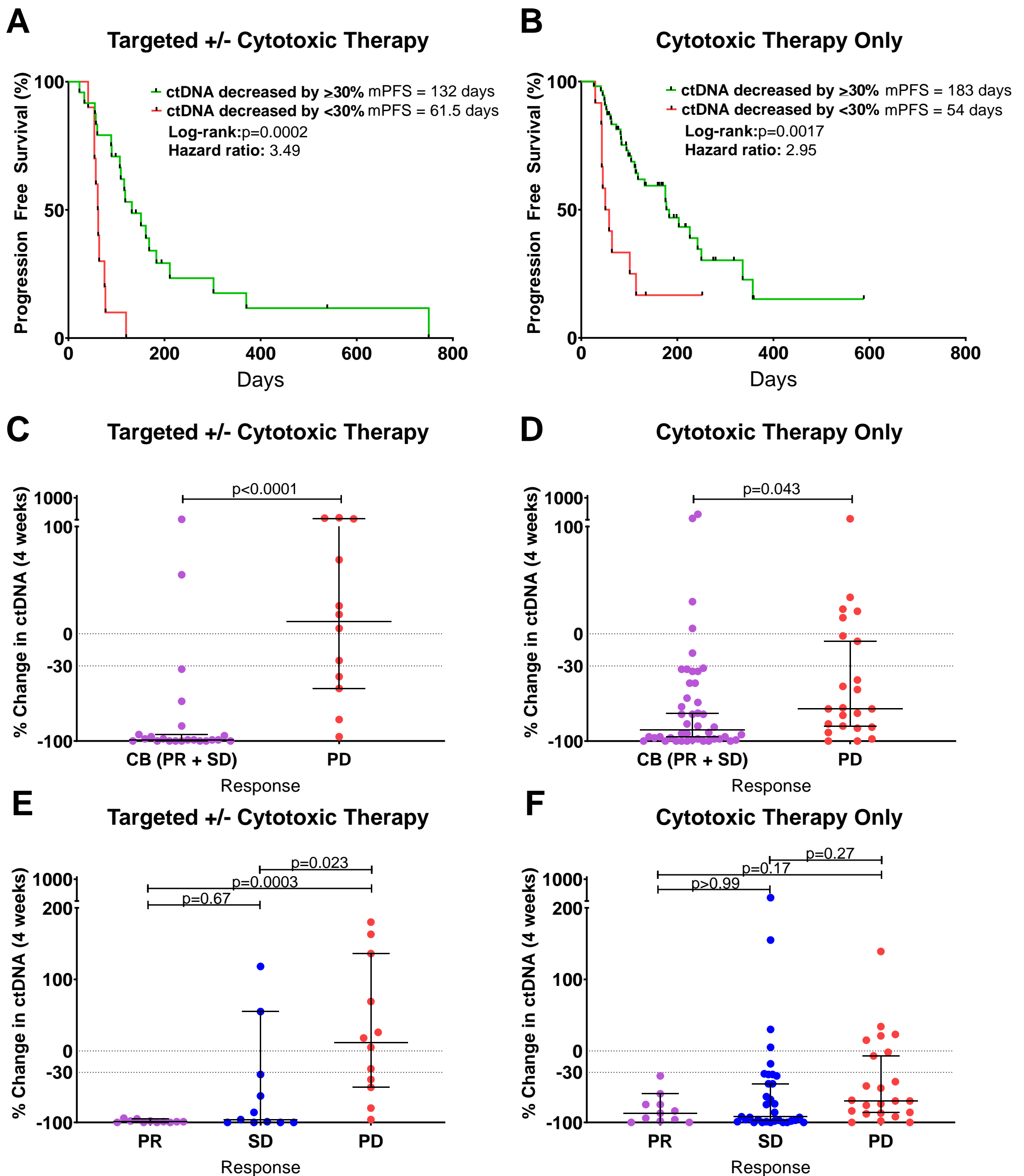


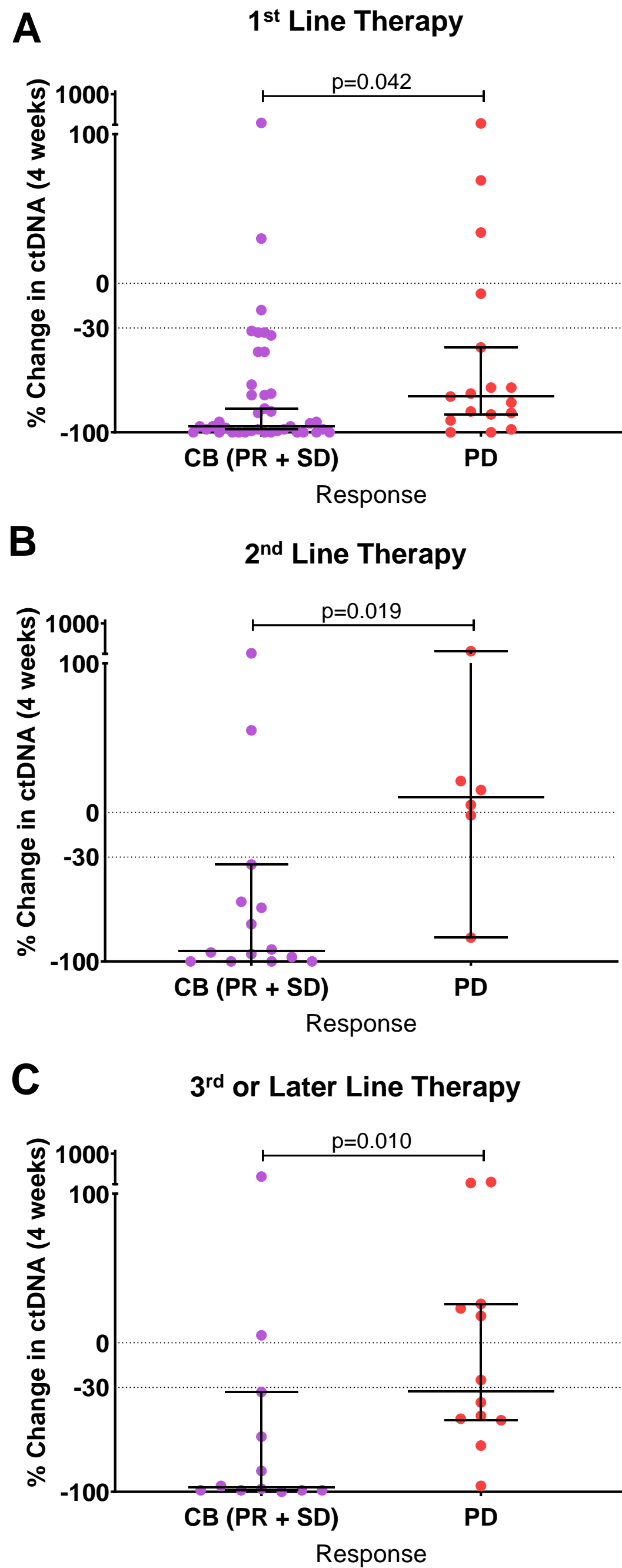
Supplementary Figure 1.

Dot plot showing changes in ctDNA at 4 weeks of treatment by RECIST1.1 criteria in patients achieving partial response (PR), stable disease (SD) and progressive disease (PD) with CRC (panel a) and non-CRC (panel b). Dot plot showing changes in ctDNA at 4 weeks by RECIST1.1 criteria in patients achieving clinical benefit (CB) and progressive disease (PD) with CRC (panel c) and non-CRC (panel d). Dot plots showing baseline ctDNA levels (mutant allele frequency-MAF) by tumor type including patients with undetectable ctDNA at baseline (panel e) and excluding patients with undetectable ctDNA at baseline (panel f). Horizontal bars represent the median and error bars indicate 95% Confidence Interval.



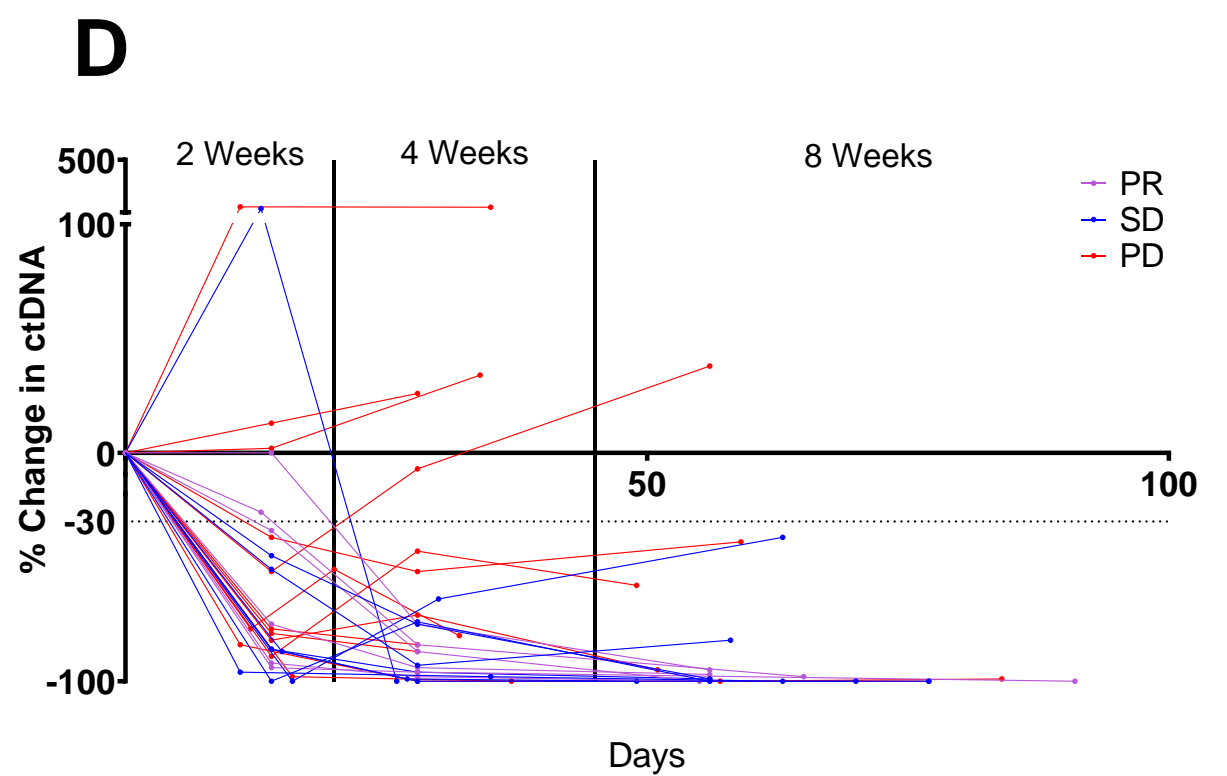
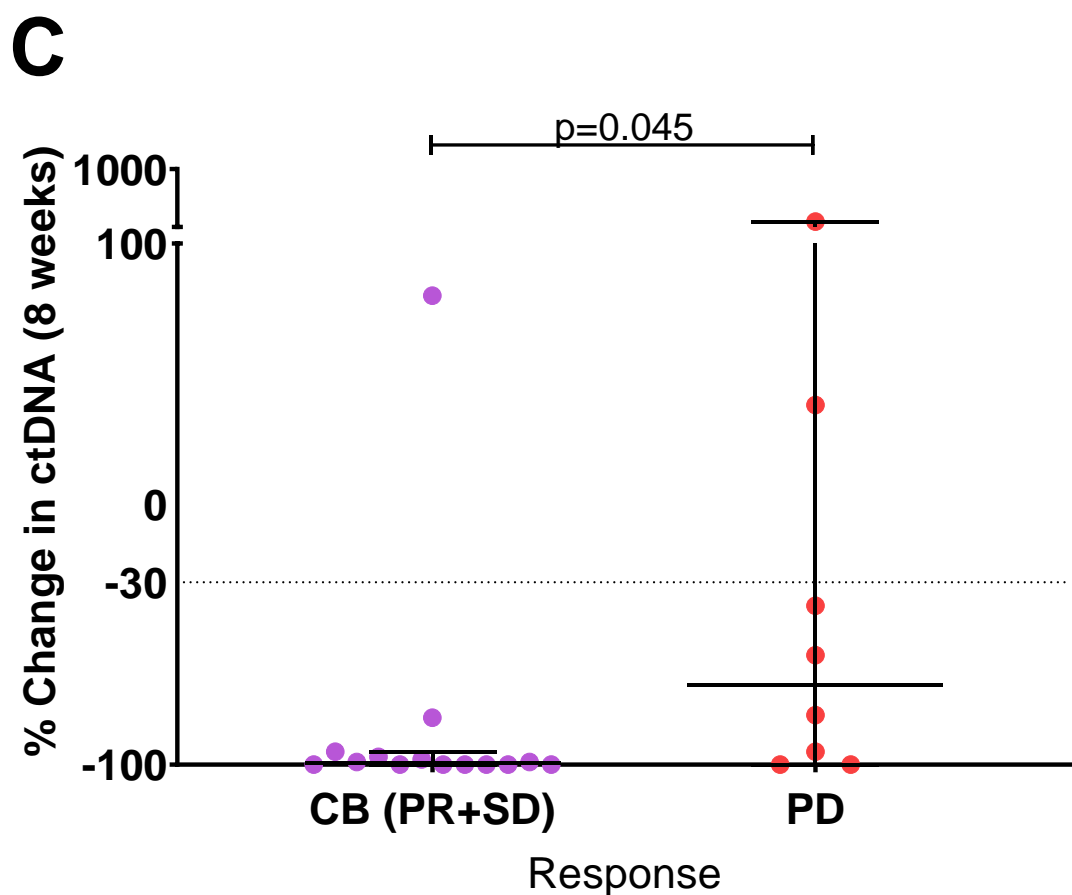
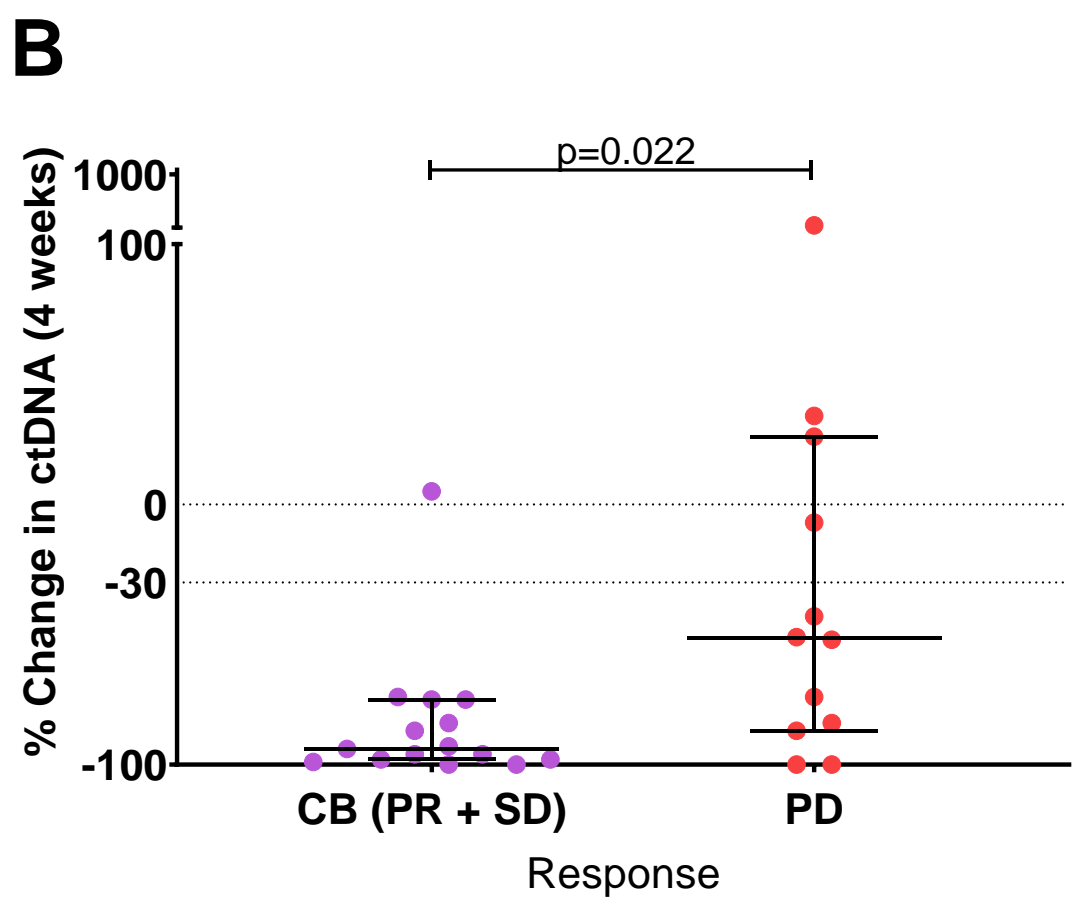
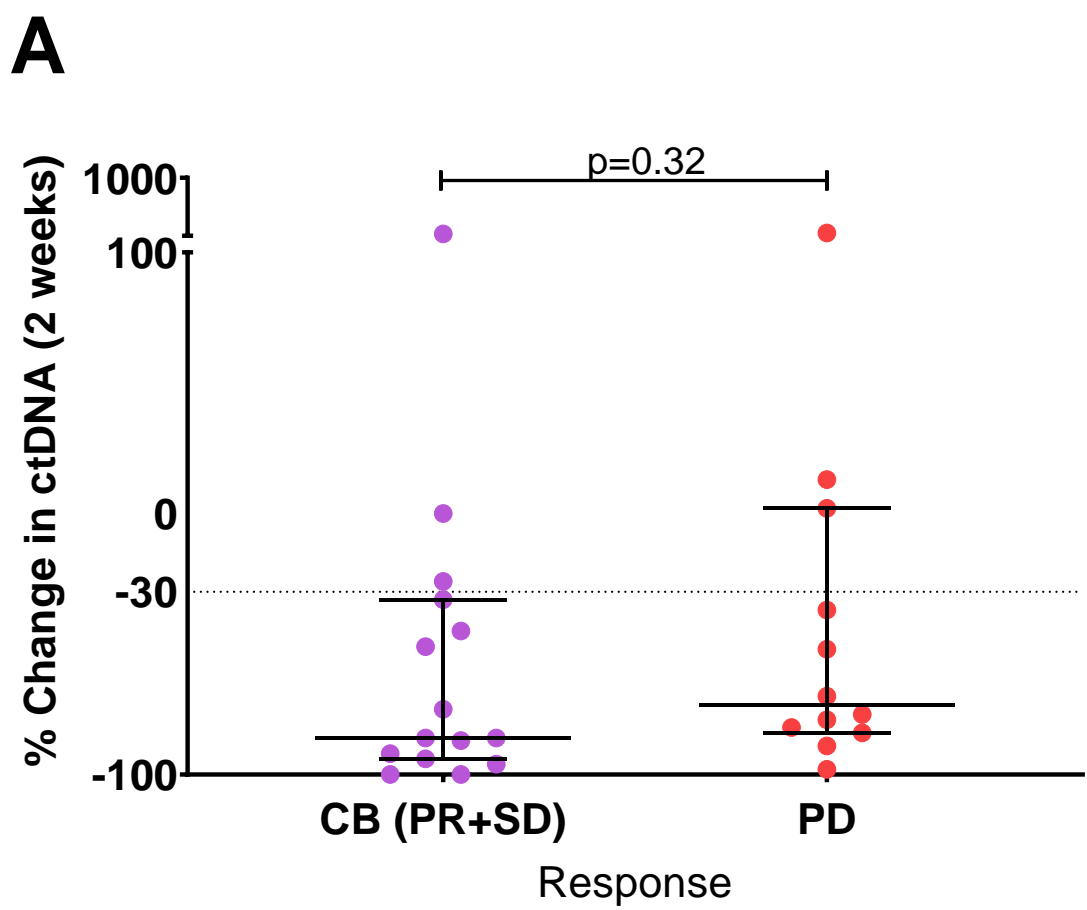
Supplementary Figure 2.

Kaplan Meier curves showing progression-free survival by percent change in ctDNA at 4 weeks from treatment initiation in patients treated with targeted +/- cytotoxic therapy (panel a) and with cytotoxic therapy only (panel b). Dot plot showing changes in ctDNA at 4 weeks by RECIST1.1 criteria in patients achieving clinical benefit (CB) and progressive disease (PD) treated with targeted +/- cytotoxic therapy (panel c) and with cytotoxic therapy only (panel d). Dot plot showing changes in ctDNA at 4 weeks of treatment by RECIST1.1 criteria in patients achieving partial response (PR), stable disease (SD) and progressive disease (PD) treated with targeted +/- cytotoxic therapy (panel e) and with cytotoxic therapy only (panel f). Horizontal bars represent the median and error bars indicate 95% Confidence Interval.



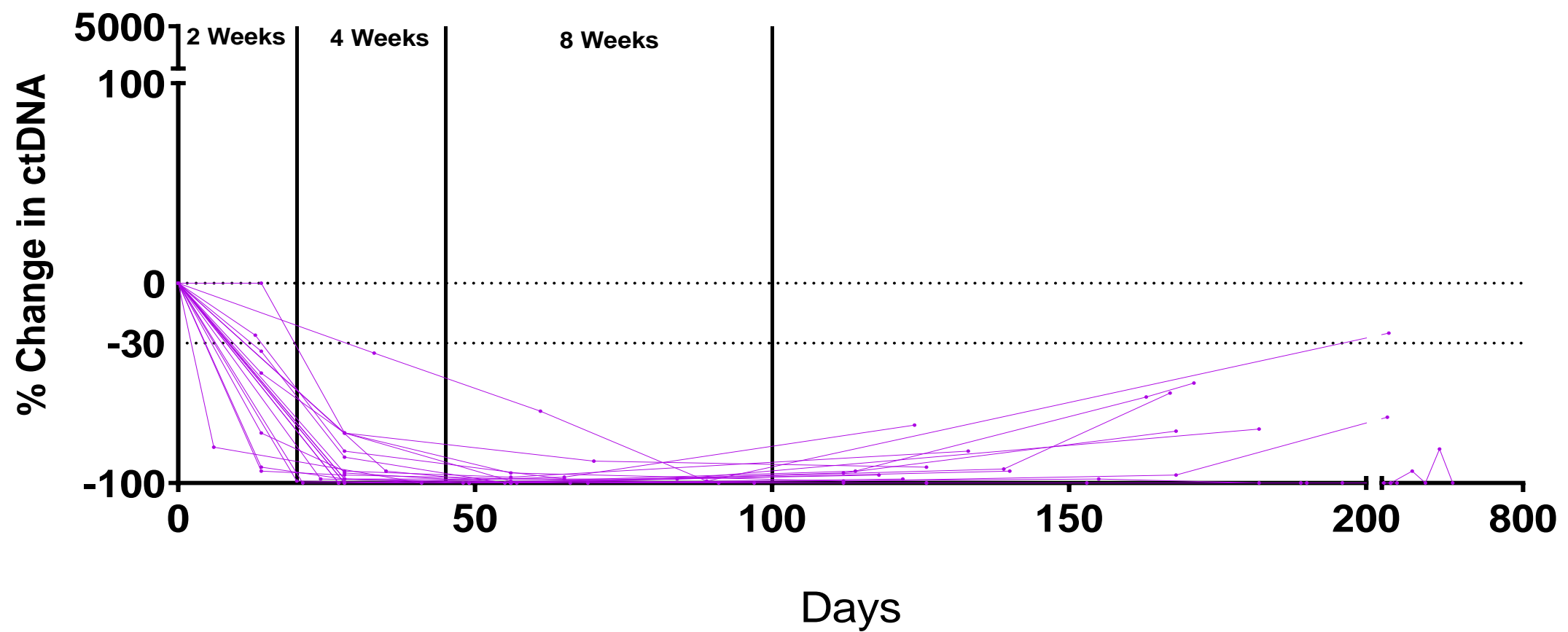
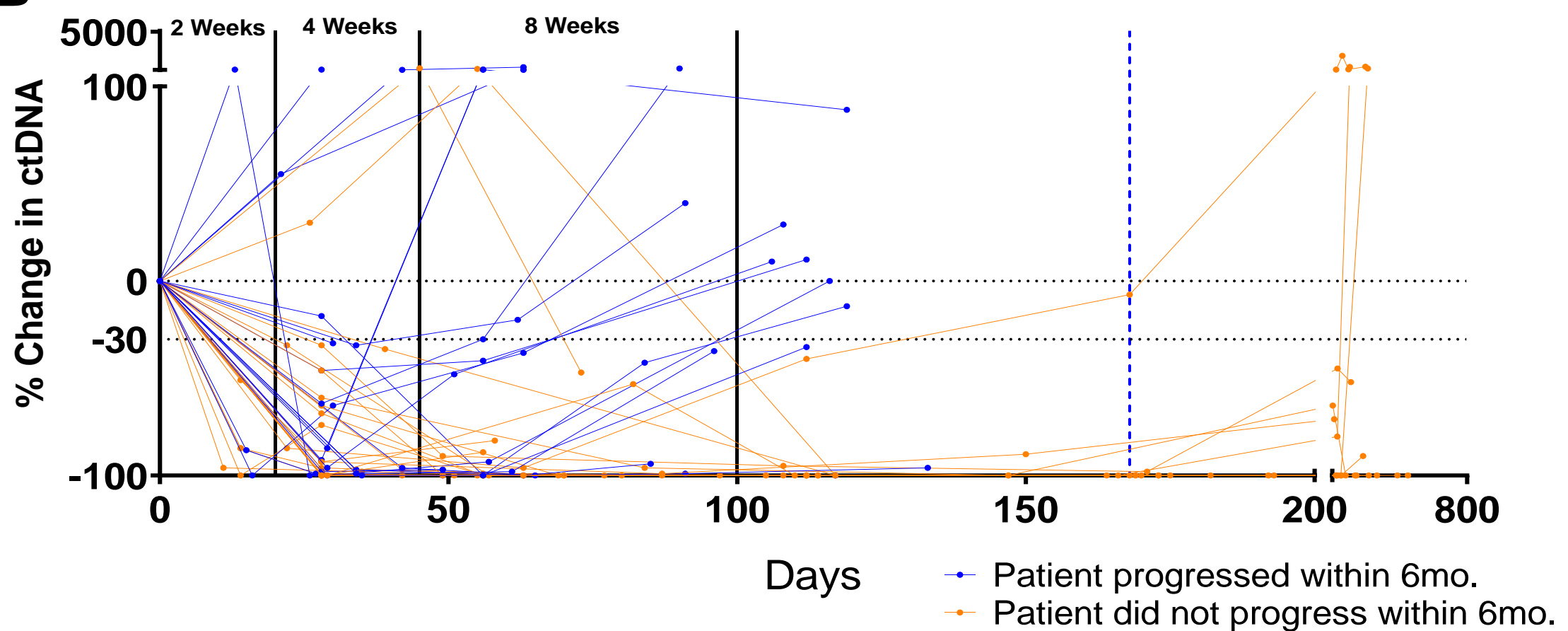
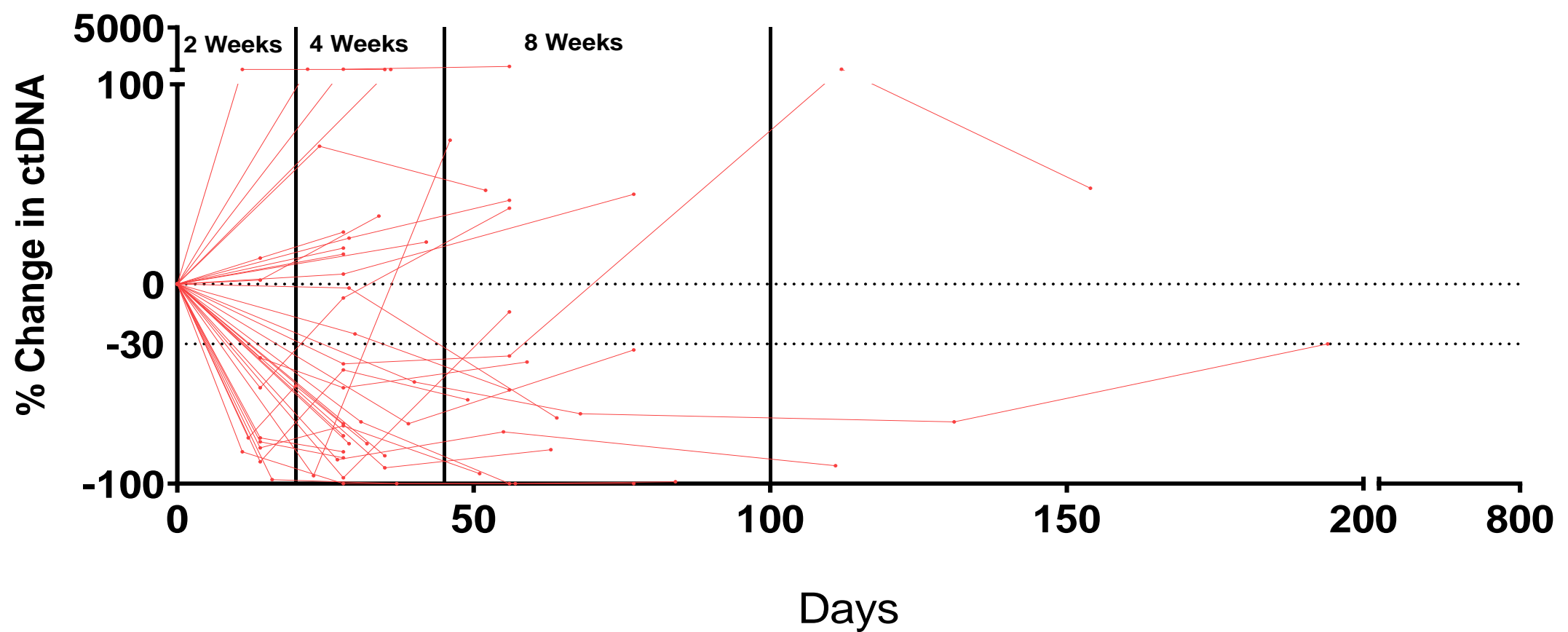
Supplementary Figure 3.

Dot plot showing changes in ctDNA at 4 weeks of treatment by RECIST1.1 criteria in patients achieving clinical benefit (CB) and progressive disease (PD) in patients treated with no prior lines of therapy (panel a), 1 prior line of therapy (panel b) and 2 or more prior lines of therapy (panel c). Horizontal bars represent the median and error bars indicate 95% Confidence Interval.



Supplementary Figure 4.

Dot plot showing changes in ctDNA of patients with 2 (panel a), 4 (panel b), and 8 week (panel c) draws during treatment by RECIST1.1 criteria in patients achieving clinical benefit (CB) and progressive disease (PD). 27 patients had 2 and 4 week draws. 22 patients had 8 week draws due to early disease progression. Spiderplots showing percent change of longitudinal ctDNA during treatment in patients with 2, 4, and 8 week draws (panel d) with partial response (PR) (purple lines), stable disease (SD) (blue lines) and progressive disease (PD) (red lines). Horizontal bars represent the median and error bars indicate 95% Confidence Interval.

A**B****C****Supplementary Figure 5.**

Spider plots showing percent change of longitudinal ctDNA during treatment in all partial response (PR) patients (purple lines, panel a), stable disease (SD) patients (panel b, blue and orange lines) and progressive disease (PD) patients (panel c, red lines)