

Image Quality Assessment

The quality of the image was assessed by the ability to perform **Detection** (presence or absence of pathology) and **Estimation** (including judgments about absolute or relative intensities within, or between anatomical structures in the image)

Overall visual quality of the image is assessed on the scale of 1 to 5 (1-unacceptable, 2-poor, 3-satisfactory, 4-good and 5-excellent).

Image Sample	Image Quality Assessment		
	Detection	Estimation	Overall Performance
MRI_16Bit			
MR_16_01	✓	✓	5
MR_16_02	✓	✓	5
MR_16_03	✓	✓	5
MR_16_04	✓	✓	5
MR_16_05	✓	✓	5
MR_16_06	✓	✓	5
MR_16_08	✓	✓	5
MR_16_10	✓	✗	4
MR_16_12	✓	✗	4
MR_16_14	✓	✗	3
MR_16_16	✓	✗	3
MR_16_18	✓	✗	2

Image Sample	Image Quality Assessment		
	Detection	Estimation	Overall Performance
MRI_8Bit			
MR_8_01	✓	✓	5
MR_8_02	✓	✓	5
MR_8_03	✓	✓	5
MR_8_04	✓	✓	5
MR_8_05	✓	✓	5
MR_8_06	✓	✓	5
MR_8_08	✓	✓	5
MR_8_10	✓	✗	4
MR_8_12	✓	✗	4
MR_8_14	✓	✗	3
MR_8_16	✓	✗	3
MR_8_18	✓	✗	2

Image Sample	Image Quality Assessment		
	Detection	Estimation	Overall Performance
CT_16Bit			
CT_16_01	✓	✓	5
CT_16_02	✓	✓	5
CT_16_03	✓	✓	5
CT_16_04	✓	✓	5
CT_16_05	✓	✓	5
CT_16_06	✓	✓	5
CT_16_08	✓	✓	5
CT_16_10	✓	✓	5
CT_16_12	✓	✗	4
CT_16_14	✓	✗	3
CT_16_16	✓	✗	2
CT_16_18	✓	✗	2

Image Sample	Image Quality Assessment		
	Detection	Estimation	Overall Performance
CT_8Bit			
CT_8_01	✓	✓	5
CT_8_02	✓	✓	5
CT_8_03	✓	✓	5
CT_8_04	✓	✓	5
CT_8_05	✓	✓	5
CT_8_06	✓	✓	5
CT_8_08	✓	✓	5
CT_8_10	✓	✓	5
CT_8_12	✓	✗	3
CT_8_14	✓	✗	3
CT_8_16	✓	✗	2
CT_8_18	✓	✗	2

Urvashi
Ph.D (176008)
ECE department
JUIT, Wagnaghat, Distt. Solan (H.P)



 Radiologist
 Ripon Hospital, Distt. Shimla, (H.P)
Radiologist
DBUZH, Shimla


Image Sample	Image Quality Assessment		
	Detection	Estimation	Overall Performance
CT_512_8			
01	✓	✓	5
02	✓	✓	5
03	✓	✓	5
04	✓	✓	5
05	✓	✓	5
06	✓	✓	5
08	✓	✓	5
10	✓	✓	5
12	✓	✗	4
14	✓	✗	4
16	✓	✗	3
18	✓	✗	2

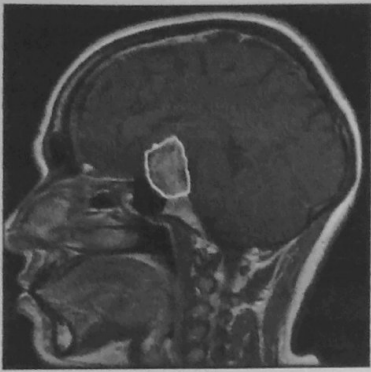
Image Sample	Image Quality Assessment		
	Detection	Estimation	Overall Performance
MR_256_8			
01	✓	✓	5
02	✓	✓	5
03	✓	✓	5
04	✓	✓	5
05	✓	✓	5
06	✓	✓	5
08	✓	✓	5
10	✓	✓	5
12	✓	✗	4
14	✓	✗	3
16	✓	✗	2
18	✓	✗	2

Image Sample	Image Quality Assessment		
	Detection	Estimation	Overall Performance
MR_512_8			
01	✓	✓	5
02	✓	✓	5
03	✓	✓	5
04	✓	✓	5
05	✓	✓	5
06	✓	✓	5
08	✓	✓	5
10	✓	✓	5
12	✓	✗	4
14	✓	✗	3
16	✓	✗	3
18	✓	✗	2

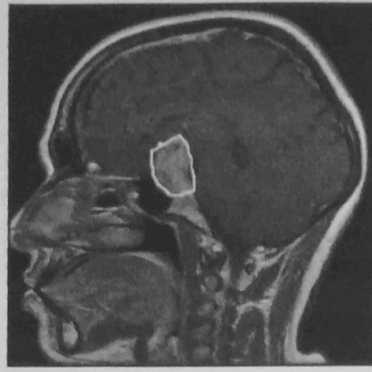
Image Sample	Image Quality Assessment		
	Detection	Estimation	Overall Performance
MR_R			
01	✓	✓	5
02	✓	✓	5
03	✓	✓	5
04	✓	✓	5
05	✓	✓	5
06	✓	✓	5
08	✓	✓	5
10	✓	✗	4
12	✓	✗	4
14	✓	✗	3
16	✓	✗	2
18	✓	✗	2

Urvashi
 Ph.D (176008)
 ECE department
 JUIT, Wagnaghat, Distt. Solan (H.P)


 Radiologist
 Ripon Hospital, Distt. Shimla, (H.P)
 SDOZE, Solan



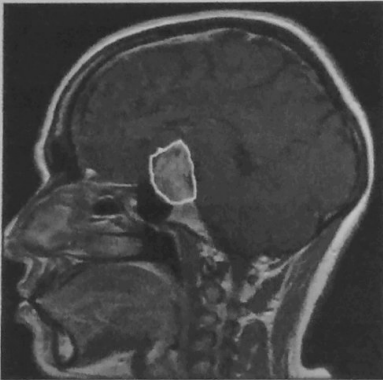
MR_8_01



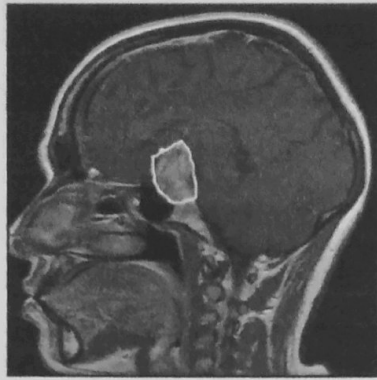
MR_8_02



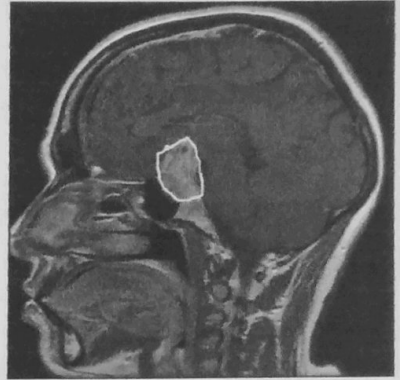
MR_8_03



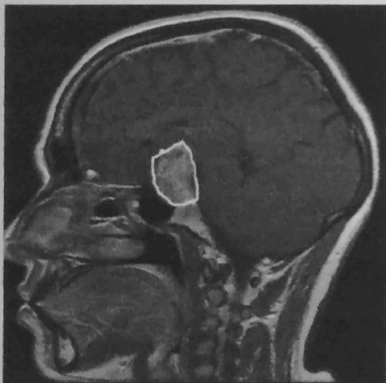
MR_8_04



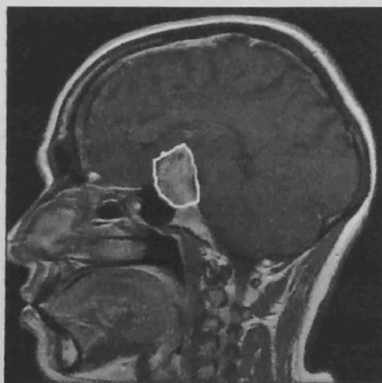
MR_8_05



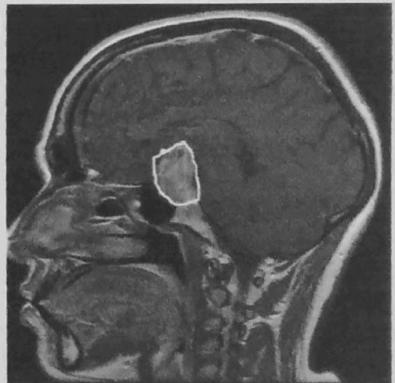
MR_8_06



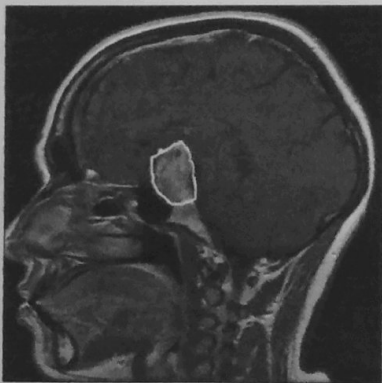
MR_8_08



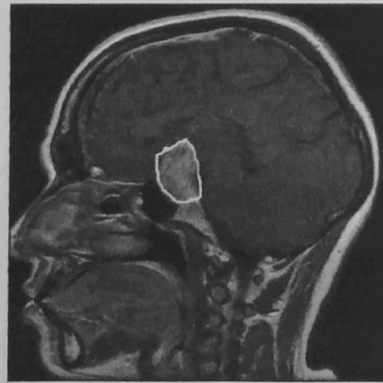
MR_8_10



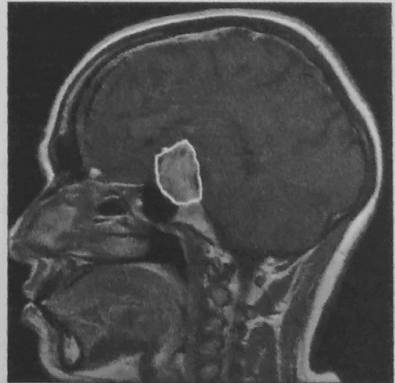
MR_8_12



MR_8_14

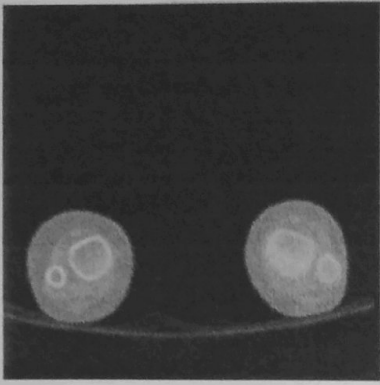


MR_8_16

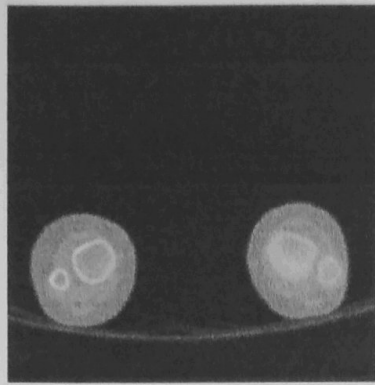


MR_8_18

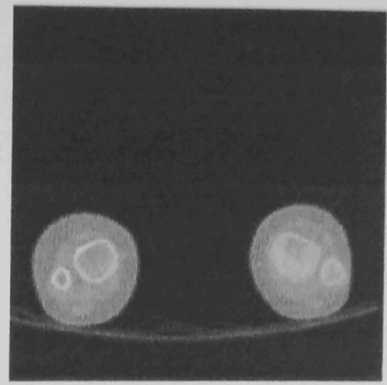
CSH
Radiologist
RDUZH, Shinya



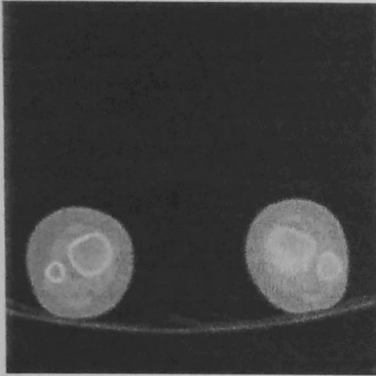
CT_8_01



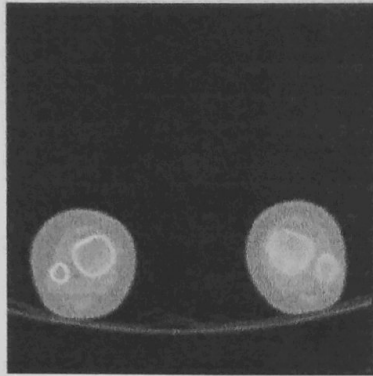
CT_8_02



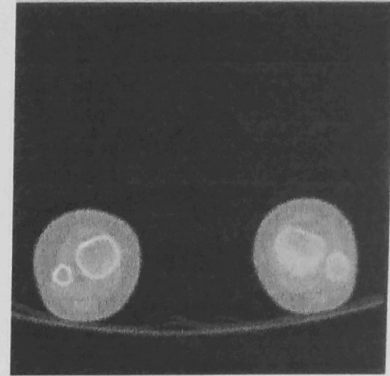
CT_8_03



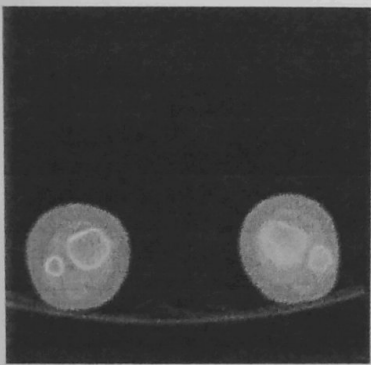
CT_8_04



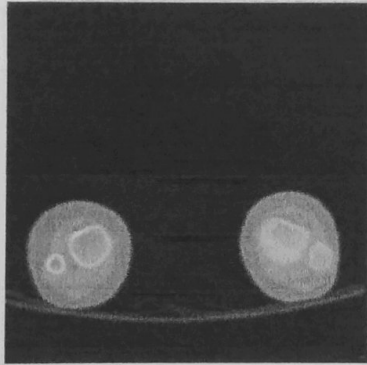
CT_8_05



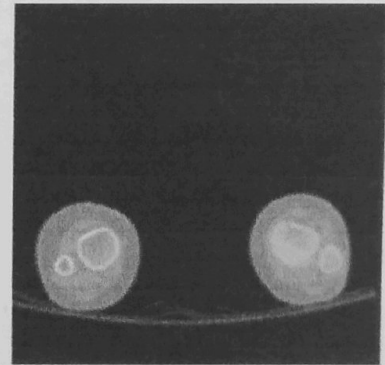
CT_8_06



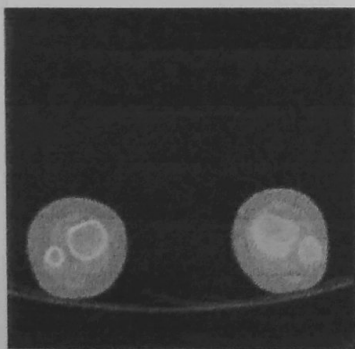
CT_8_08



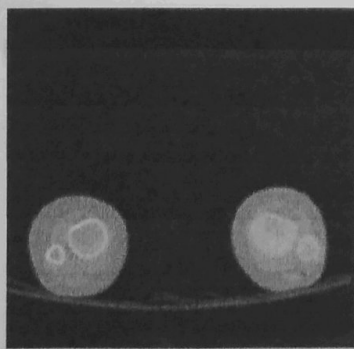
CT_8_10



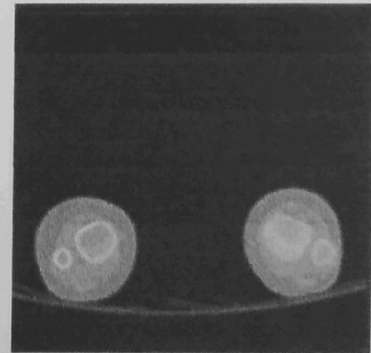
CT_8_12



CT_8_14

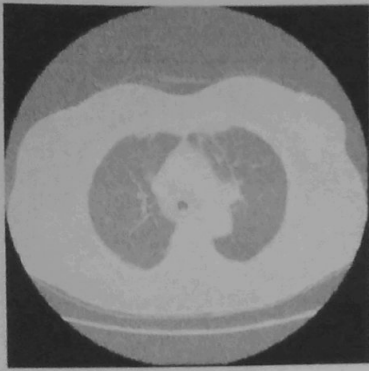


CT_8_16



CT_8_18

Ali
Radiologist
DDUZH, Shimla



CT_16_01



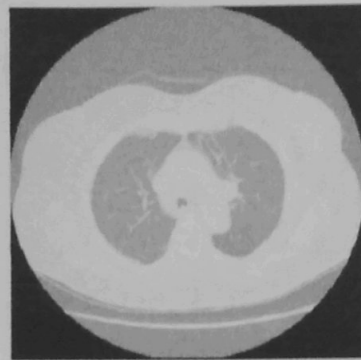
CT_16_02



CT_16_03



CT_16_04



CT_16_05



CT_16_06



CT_16_08



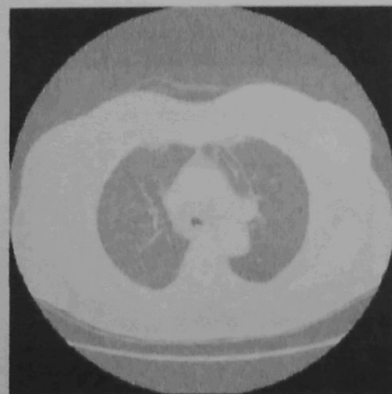
CT_16_10



CT_16_12



CT_16_14

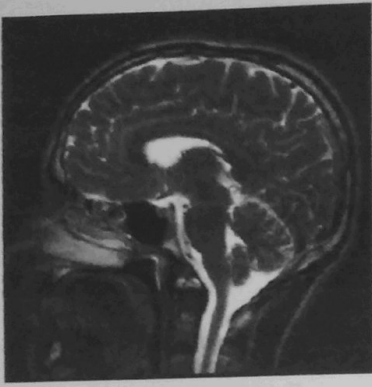


CT_16_16

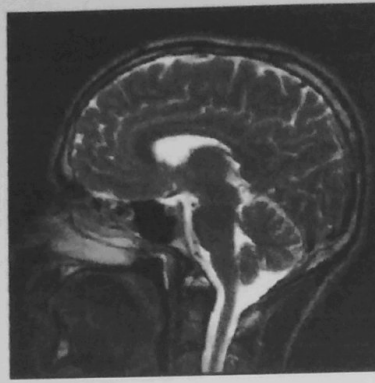


CT_16_18

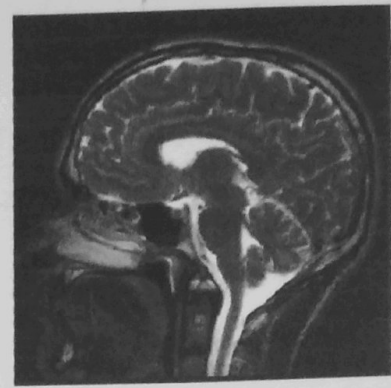
Ali
Radiologist
DPUZH, Shimla



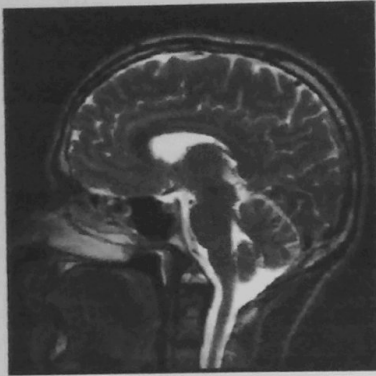
MR_16_01



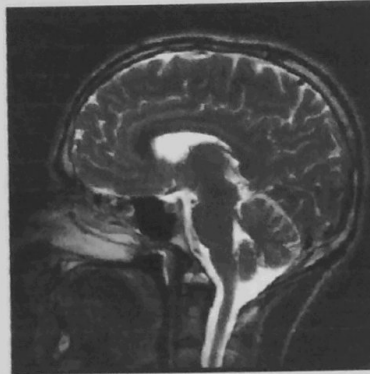
MR_16_02



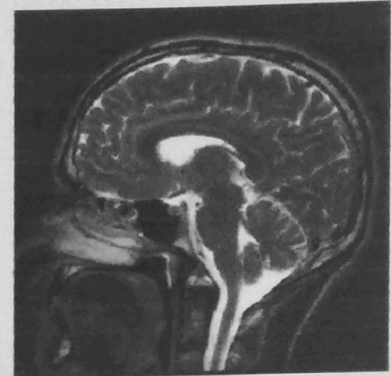
MR_16_03



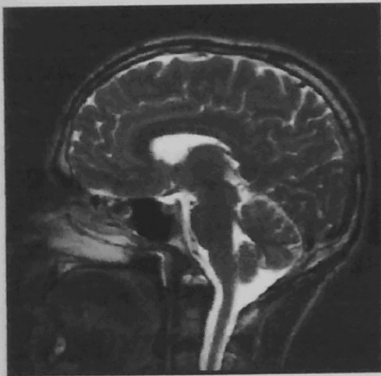
MR_16_04



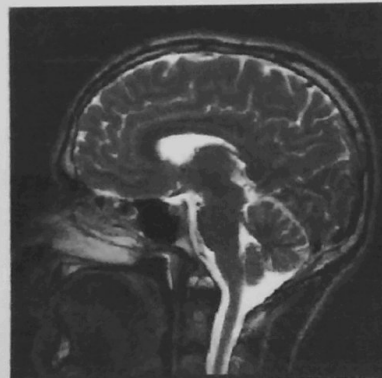
MR_16_05



MR_16_06



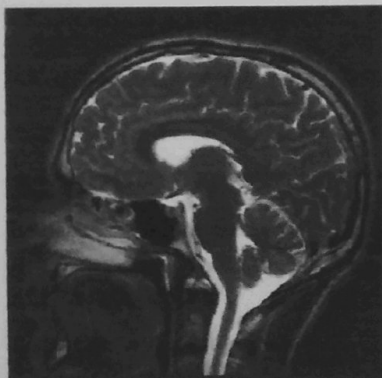
MR_16_08



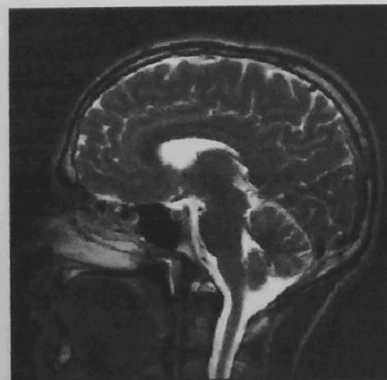
MR_16_10



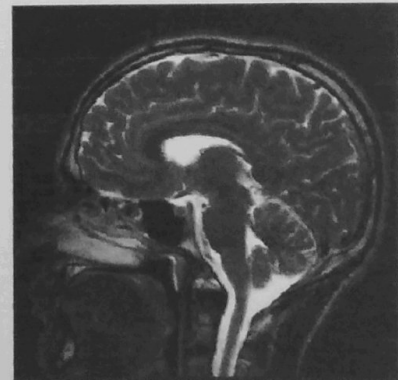
MR_16_12



MR_16_14

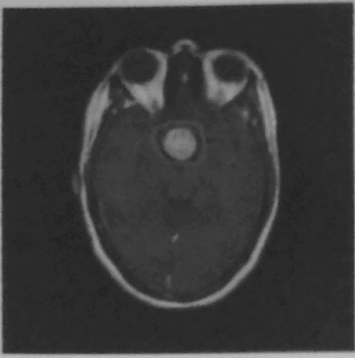


MR_16_16

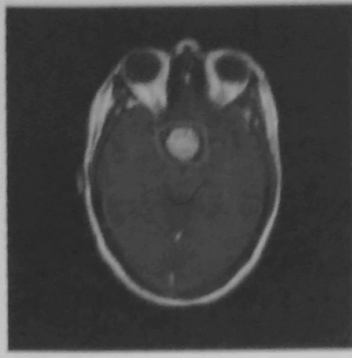


MR_16_18

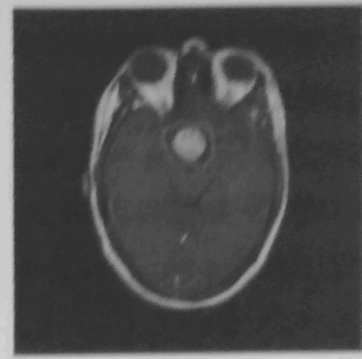
Asr
 Radiologist
 PDUZH, Shimla



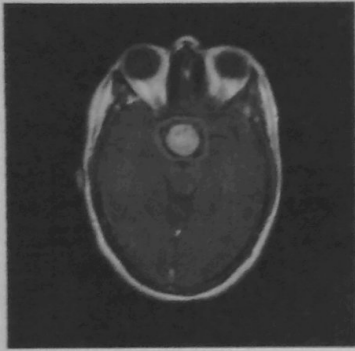
MR_R_01



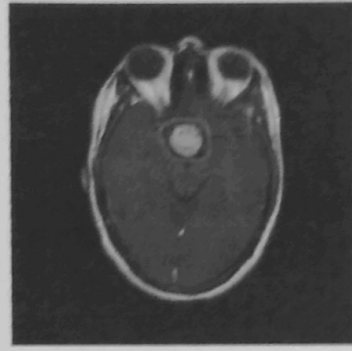
MR_R_02



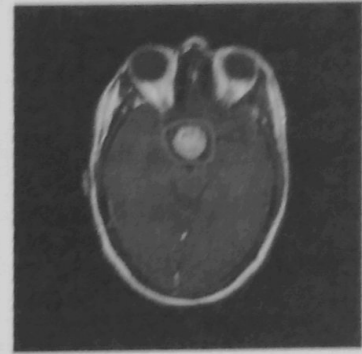
MR_R_03



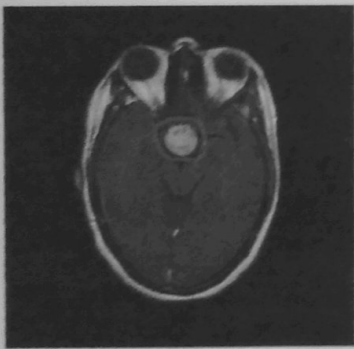
MR_R_04



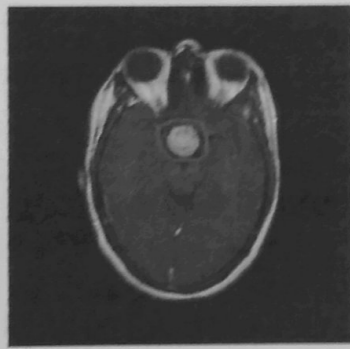
MR_R_05



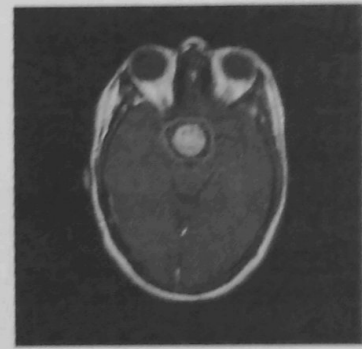
MR_R_06



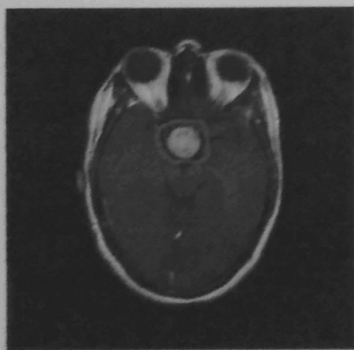
MR_R_08



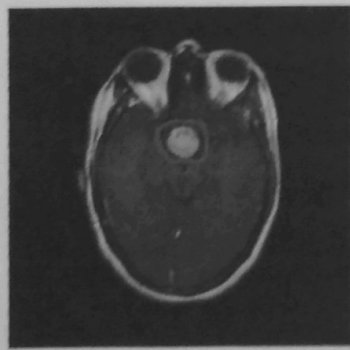
MR_R_10



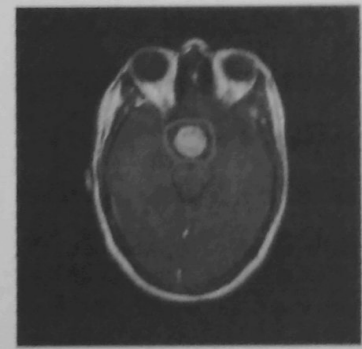
MR_R_12



MR_R_14



MR_R_16



MR_R_18

Radiologist
DDUZH, Shimla

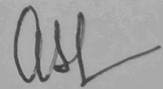
TO WHOMSOEVER IT MAY CONCERN

Date: 21 Jun 2019

It is certified that volumetric medical image data of MRI and CT of various modalities are checked for quantization levels for good recovery and reconstruction of compressed medical images. The quality of the image was assessed by the ability to perform Detection (presence or absence of pathology) and Estimation (including judgments about absolute or relative intensities within, or between anatomical structures in the image) of the images worked upon by research scholar Ms. Urvashi Sharma of ECE Department, Jaypee University of Information Technology, Distt. Solan under the supervision of Dr. Meenakshi Sood and Dr. Emjee Puthooran.

Signature of the Radiologist

(Name and stamp)



Radiologist
DDUZH, Shimla